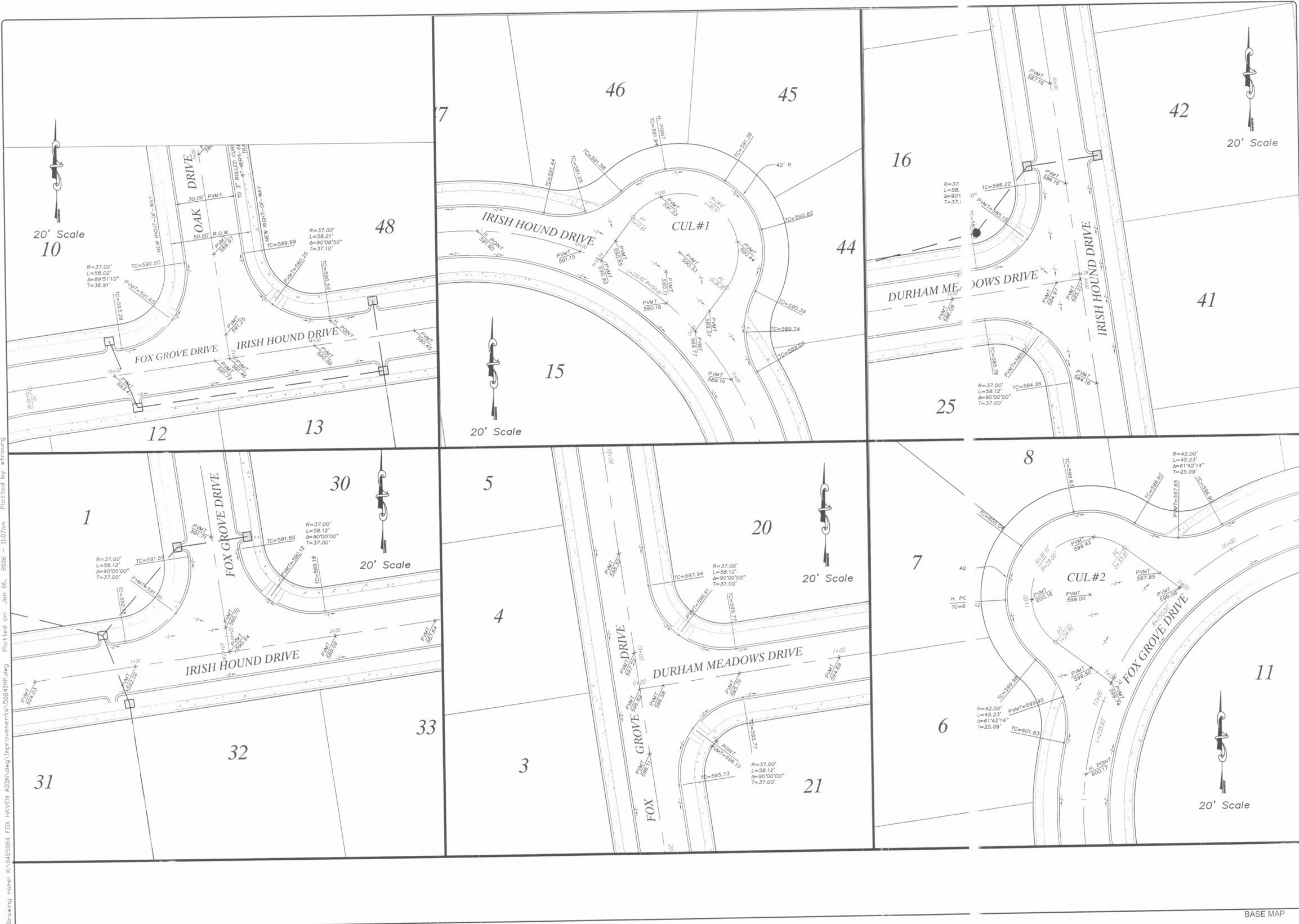


Drawing name: K:\0405084 FOX HAVEN ADDN.dwg Improvements\5084IMP.dwg Plotted on: Jan 06, 2006 - 11:07am Plotted by: straug



ISSUE/REMARKS/DATE

- 1 REV PER DUCKETT CREEK SANI. DISTRICT 9-20-05
- 2 REV PER CITY AND WATER DISTRICT COMMENTS 9-28-05
- 3 REV PER DUCKETT CREEK SANI. DISTRICT 10-17-05
- 4 REV PER DUCKETT CREEK SANI. DISTRICT 10-24-05
- 5 REV PER PUBLIC WATER DISTRICT NO. 2 11-14-05
- 6 REV PER CITY OF OTTAWA, 12-02-05
- 7 REV PER CITY OF OTTAWA, 1-9-2006

PREPARED FOR:  
**McBride & Son Homes  
 Land Development, Inc.**  
 #1 McBride & Son Center Drive  
 Chesterfield, MO. 63005  
 636 537-2000

PREPARED BY:  
**THE STERLING CO.**  
 ENGINEERS & SURVEYORS  
 5055 NEW BAUMGARTNER ROAD  
 ST. LOUIS, MISSOURI 63129  
 (314) 487-0440 FAX 487-8844  
 E-Mail: Sterling@sterlingeng.com

PROJECT:	FOX HAVEN ADDITION		
DRAWN:	DESIGNED:	CHECKED:	
SHEET TITLE:	WARPING DETAILS		
NO.	04	05	084
M.S.D.	SHEET		
P#	13		
DIGITAL FILE LOCATION:	SERVER=STERLING		
DATE	12/20/05		
OF	15		

BASE MAP