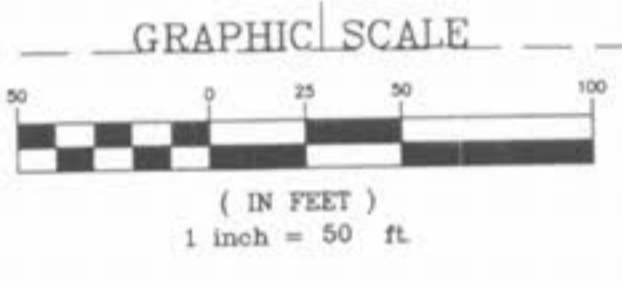
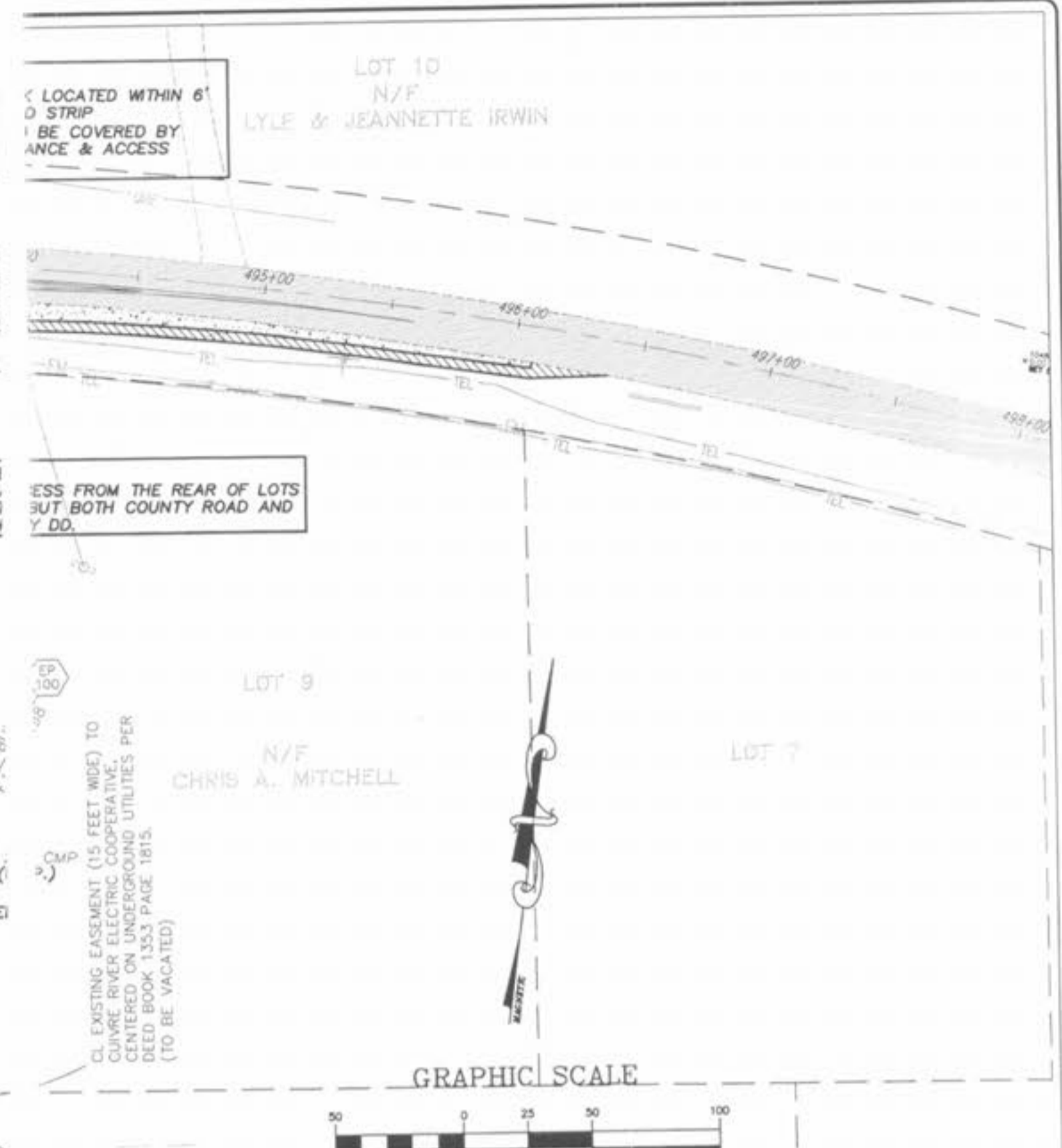
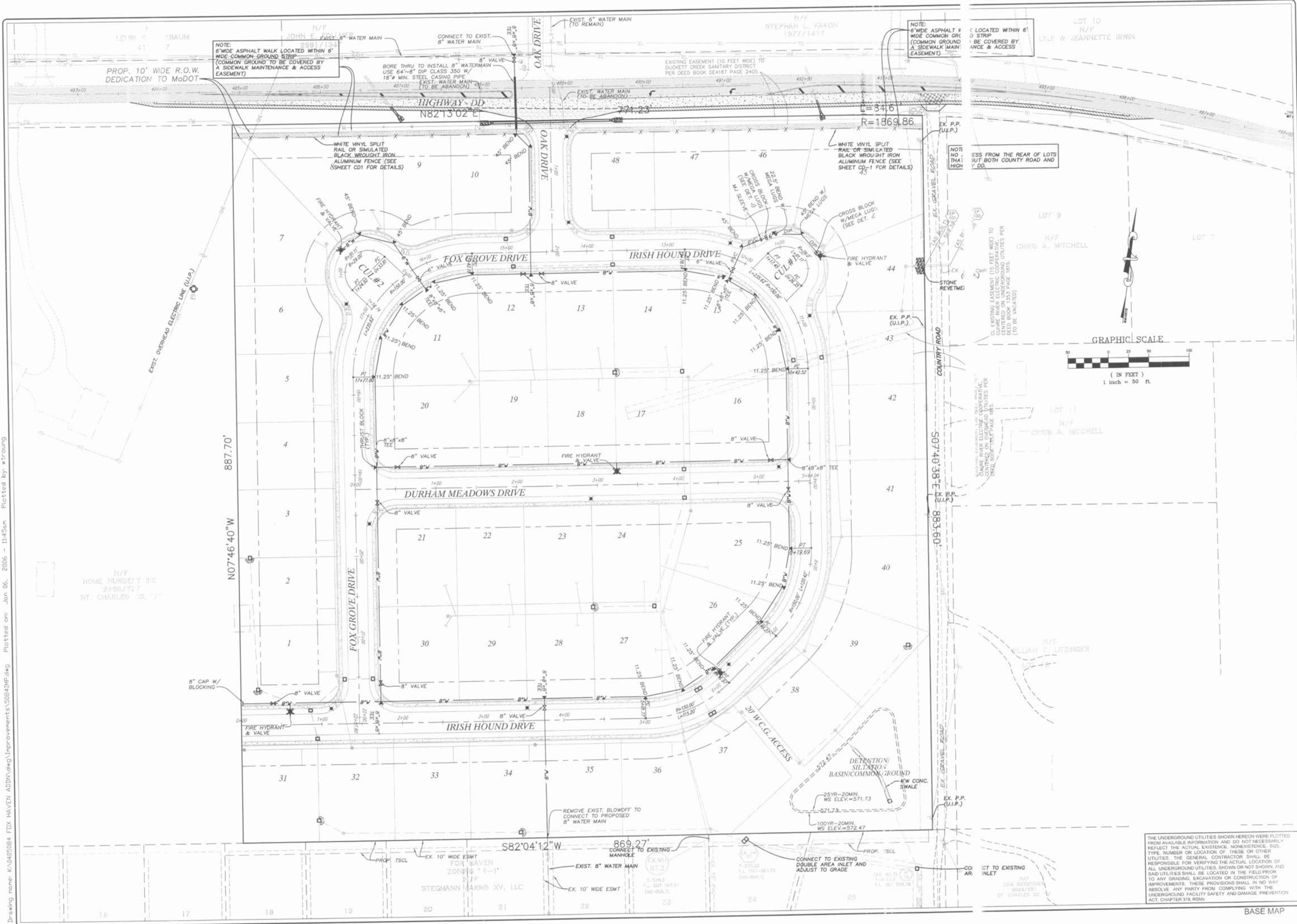


Drawing name: K:\0405084 FOX HAVEN ADD\DWG\Improvements\50841MP.dwg Plotted on: Jan 06, 2006 - 11:45am Plotted by: stroung



THE UNDERGROUND UTILITIES SHOWN HEREON WERE PLOTTED FROM AVAILABLE INFORMATION AND DO NOT NECESSARILY REFLECT THE ACTUAL EXISTENCE, NONEXISTENCE, SIZE, TYPE, NUMBER OR LOCATION OF THESE OR OTHER UTILITIES. THE GENERAL CONTRACTOR SHALL BE RESPONSIBLE FOR VERIFYING THE ACTUAL LOCATION OF ALL UNDERGROUND UTILITIES, SHOWN OR NOT SHOWN, AND SAID UTILITIES SHALL BE LOCATED IN THE FIELD PRIOR TO ANY GRADING, EXCAVATION OR CONSTRUCTION OF IMPROVEMENTS. THESE PROVISIONS SHALL IN NO WAY ABSOLVE ANY PARTY FROM COMPLYING WITH THE UNDERGROUND FACILITY SAFETY AND DAMAGE PREVENTION ACT, CHAPTER 319, RSMo.

ISSUE	REMARKS/DATE
1	REV PER DUCKETT CREEK SANI. DISTRICT 9-26-05
2	REV PER CITY AND WATER DISTRICT COMMENTS 9-28-05
3	REV PER DUCKETT CREEK SANI. DISTRICT 10-17-05
4	REV PER DUCKETT CREEK SANI. DISTRICT 10-24-05
5	REV PER PUBLIC WATER DISTRICT NO. 2 11-14-05
6	REV PER CITY OF OTTAWA, 12-02-05
7	REV PER CITY OF OTTAWA, 1-9-2006

PREPARED FOR:
McBride & Son Homes
 Land Development, Inc.
 #1 McBride & Son Center Drive
 Chesterfield, MO. 63005
 636 537-2000



PREPARED BY:
THE STERLING CO.
 ENGINEERS & SURVEYORS
 5055 NEW BAUMGARTNER ROAD
 ST. LOUIS, MISSOURI 63129
 (314) 487-0440 FAX 487-8944
 E-Mail: Sterling@sterling-eng-survey.com

DRAWN:	DESIGNED:	CHECKED:
PROJECT:	FOX HAVEN ADDITION	
SHEET TITLE:	WATER DISTRIBUTION PLAN	

NO.	04	05	084
M.S.D.	SHEET		14
DIGITAL FILE LOCATION:	K:\0405084 FOX HAVEN ADD\DWG\Improvements\50841MP.dwg		OF 15

BASE MAP