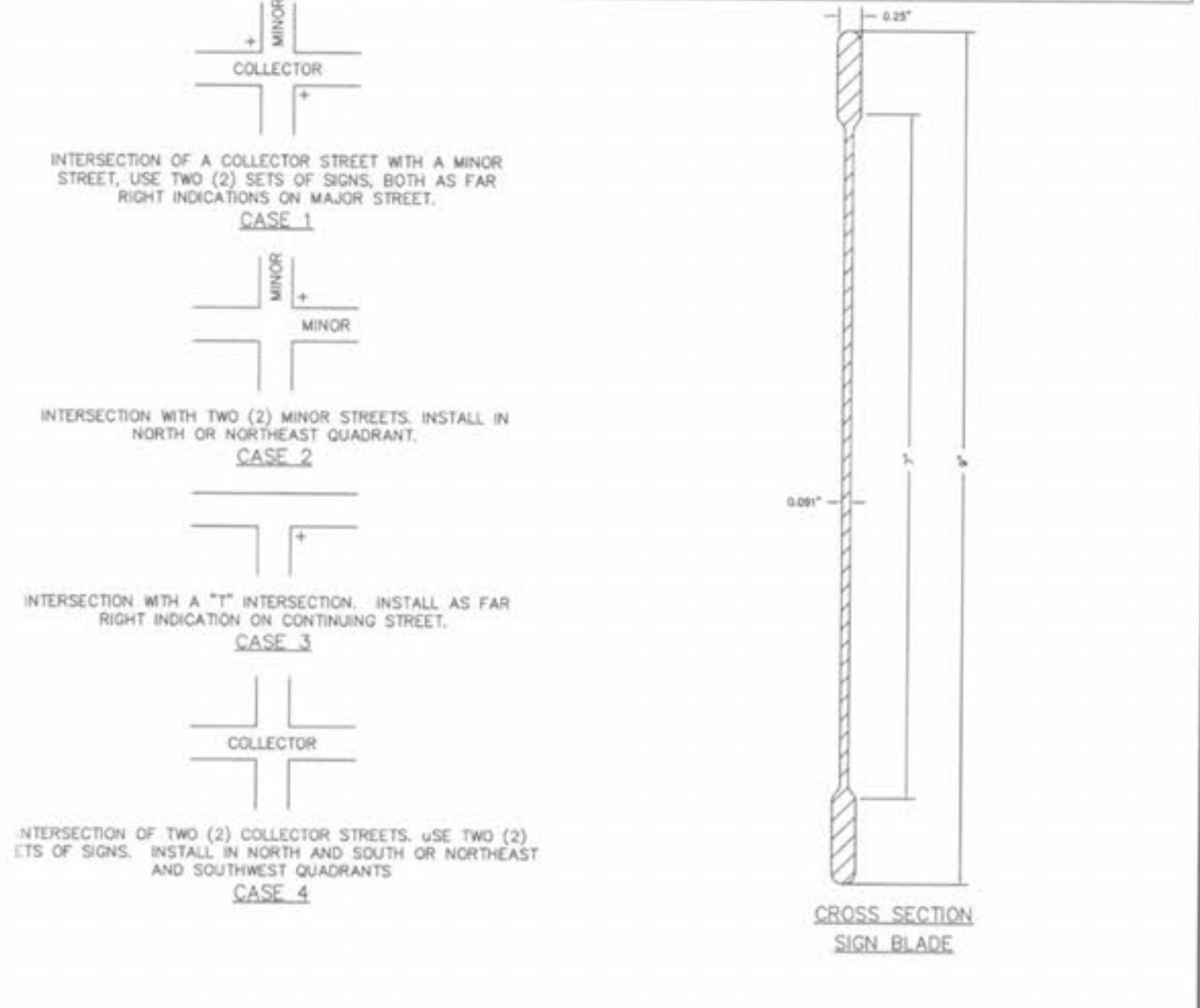
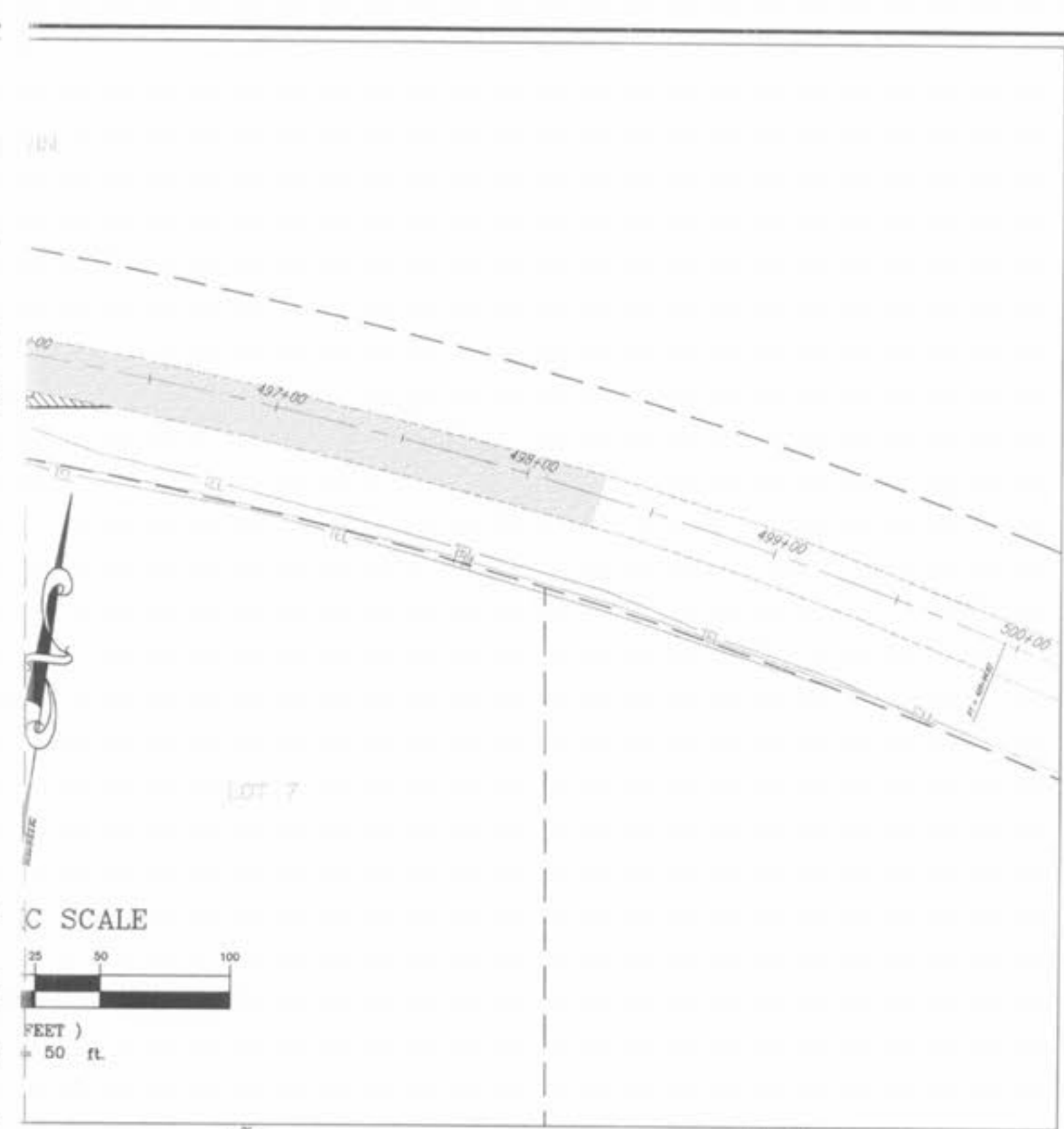
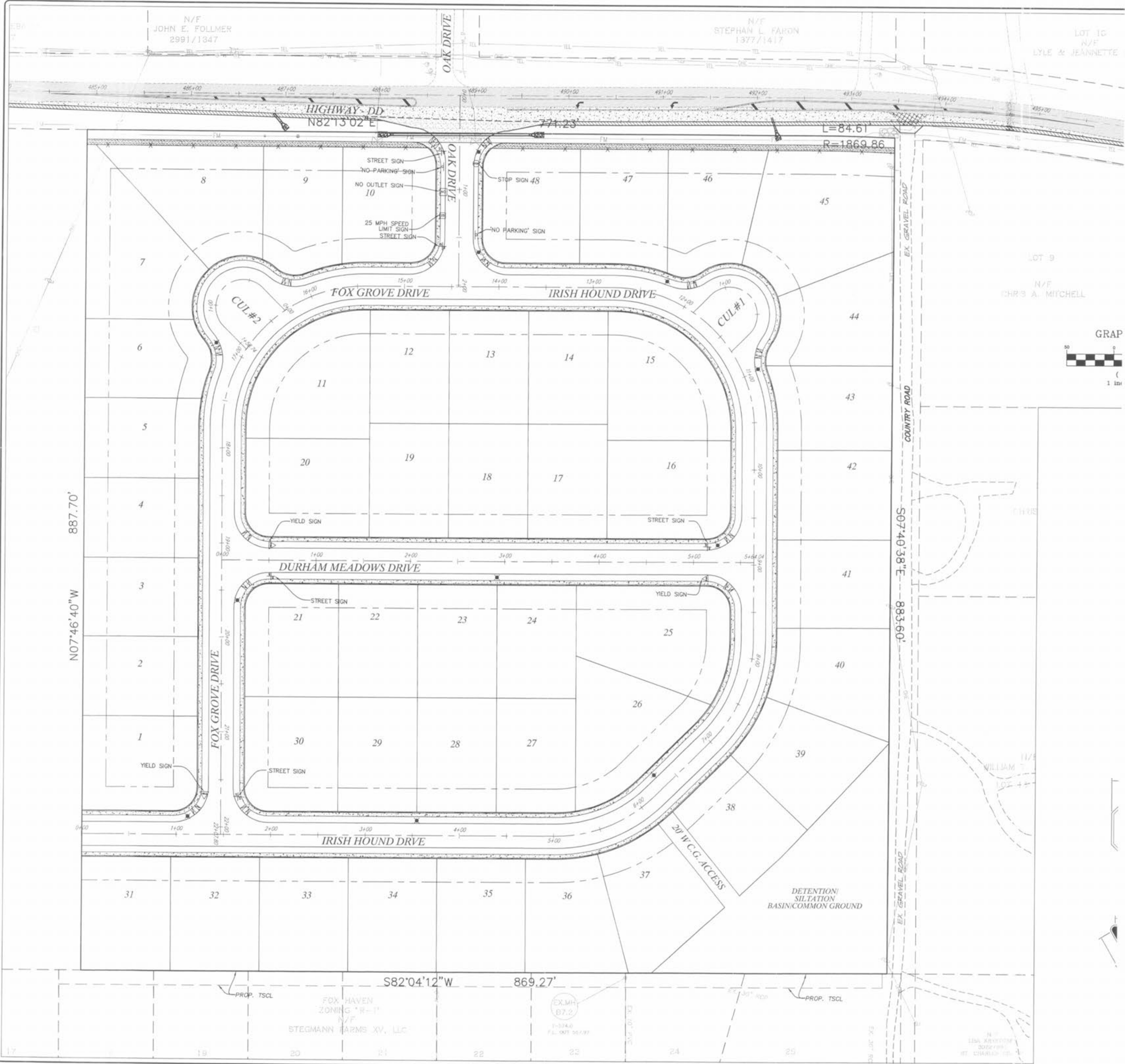


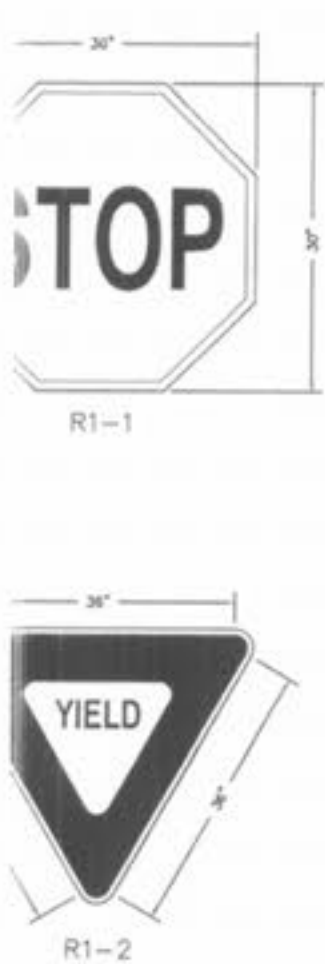
Drawing name: K:\0405084_FDX_HAVEN_ADDITION.dwg, Improvements\5084\IMP.dwg Plotted on: Feb 01, 2006 - 11:14am Plotted by: wtroung



GENERAL NOTES:

- ALL SIGN POSTS, BACKS AND BRACKET ARMS SHALL BE PAINTED BLACK USING "CARBOLINE RUST/BLIND PENETRATING SEALER SG" AND "CARBOLINE 133 HB" PAINT OR EQUIVALENT AS APPROVED BY THE CITY OF OTTAWA.
- ALL SIGN LOCATIONS AND SIZES MUST BE APPROVED BY THE PLANNING DIVISION PRIOR TO INSTALLATION.
- "R.O.W." DENOTES PROPOSED RIGHT-OF-WAY LINE.
- STREET NAME SIGN PLATES SHALL BE 9 INCHES WIDE EXTRUDED ALUMINUM PANELS IN 30, 36, 42, 48, 52 AND 54 INCH LENGTHS PER DRAWING SHOWN ON THIS EXHIBIT.
- SIGN LEGEND SHALL BE 6 INCH SERIES "C" REFLECTIVE WHITE LETTERING FOR STREET NAMES AND 4 INCH REFLECTIVE SERIES "B" LETTERS FOR THE SUFFIX ON GREEN REFLECTIVE BACKGROUND. ALL REFLECTIVE SHEETING SHALL BE TYPE III ENCLOSED LENS AND MEET FEDERAL SPECIFICATION FF-79, 1979 SECTION 633.06 SHEET REFLECTIVE MATERIALS.
- SIGN POSTS SHALL BE HEAVY "U" CHANNEL PAINTED STEEL POSTS.
- SIGNS ARE TO BE MOUNTED A MINIMUM OF 3.5 FEET FROM THE BACK OF CURB WITH A MINIMUM CLEARANCE FROM THE SIDEWALK OF 1.5 FEET.
- SIGN POSTS SHALL BE MOUNTED 18-24 INCHES IN THE GROUND AND SET IN A CONCRETE BASE.
- THE CONTRACTOR SHALL BE RESPONSIBLE FOR VERIFICATION OF UNDERGROUND UTILITIES AND STRUCTURES SHOWN OR NOT SHOWN PRIOR TO THE PLACEMENT OF SIGN POSTS.
- ALL SIGNS TO BE INSTALLED PER M.U.T.C.D.

THE UNDERGROUND UTILITIES SHOWN HEREON WERE PLOTTED FROM AVAILABLE INFORMATION AND DO NOT NECESSARILY REFLECT THE ACTUAL EXISTENCE, NONEXISTENCE, SIZE, TYPE, NUMBER OR LOCATION OF THESE OR OTHER UTILITIES. THE GENERAL CONTRACTOR SHALL BE RESPONSIBLE FOR VERIFYING THE ACTUAL LOCATION OF ALL UNDERGROUND UTILITIES SHOWN OR NOT SHOWN AND SAID UTILITIES SHALL BE LOCATED IN THE FIELD PRIOR TO ANY GRADING, EXCAVATION OR CONSTRUCTION OF IMPROVEMENTS. THESE PROVISIONS SHALL IN NO WAY ABSOLVE ANY PARTY FROM COMPLYING WITH THE UNDERGROUND FACILITY SAFETY AND DAMAGE PREVENTION ACT, CHAPTER 319, RSMo.



ISSUE REMARKS/DATE

1	REV PER DUCHETT CREEK SANI. DISTRICT 9-20-05
2	REV PER CITY AND WATER DISTRICT COMMENTS 9-28-05
3	REV PER DUCHETT CREEK SANI. DISTRICT 10-17-05
4	REV PER DUCHETT CREEK SANI. DISTRICT 10-24-05
5	REV PER PUBLIC WATER DISTRICT NO. 2 11-14-05
6	REV PER CITY OF OTTAWA 12-02-05
7	REV PER CITY OF OTTAWA 1-9-2006
8	REV PER CITY OF OTTAWA 2-1-06

PREPARED FOR:
**McBride & Son Homes
 Land Development, Inc.**
 #1 McBride & Son Center Drive
 Chesterfield, MO. 63005
 636 537-2000



PREPARED BY:
THE STERLING CO.
 ENGINEERS & SURVEYORS
 5055 NEW BAUMGARTNER ROAD
 ST. LOUIS, MISSOURI 63129
 (314) 487-0440 FAX 487-9944
 E-Mail: Sterling@sterling-eng-survey.com

DRAWN:	DESIGNED:	CHECKED:
FOX HAVEN ADDITION		
PROJECT:	SHEET TITLE: TRAFFIC CONTROL PLAN	
NO. 04	05	084
M.S.D.	SHEET	
PI#	15	OF 15
DIGITAL FILE LOCATION: R:\P\5084\04.DWG		