

Drawing name: K:\0405084 FOX HAVEN ADDN\dwg\improvements\6147DE\TAILS.dwg Plotted on: Jun 06, 2006 4:03pm Plotted by: wtroung

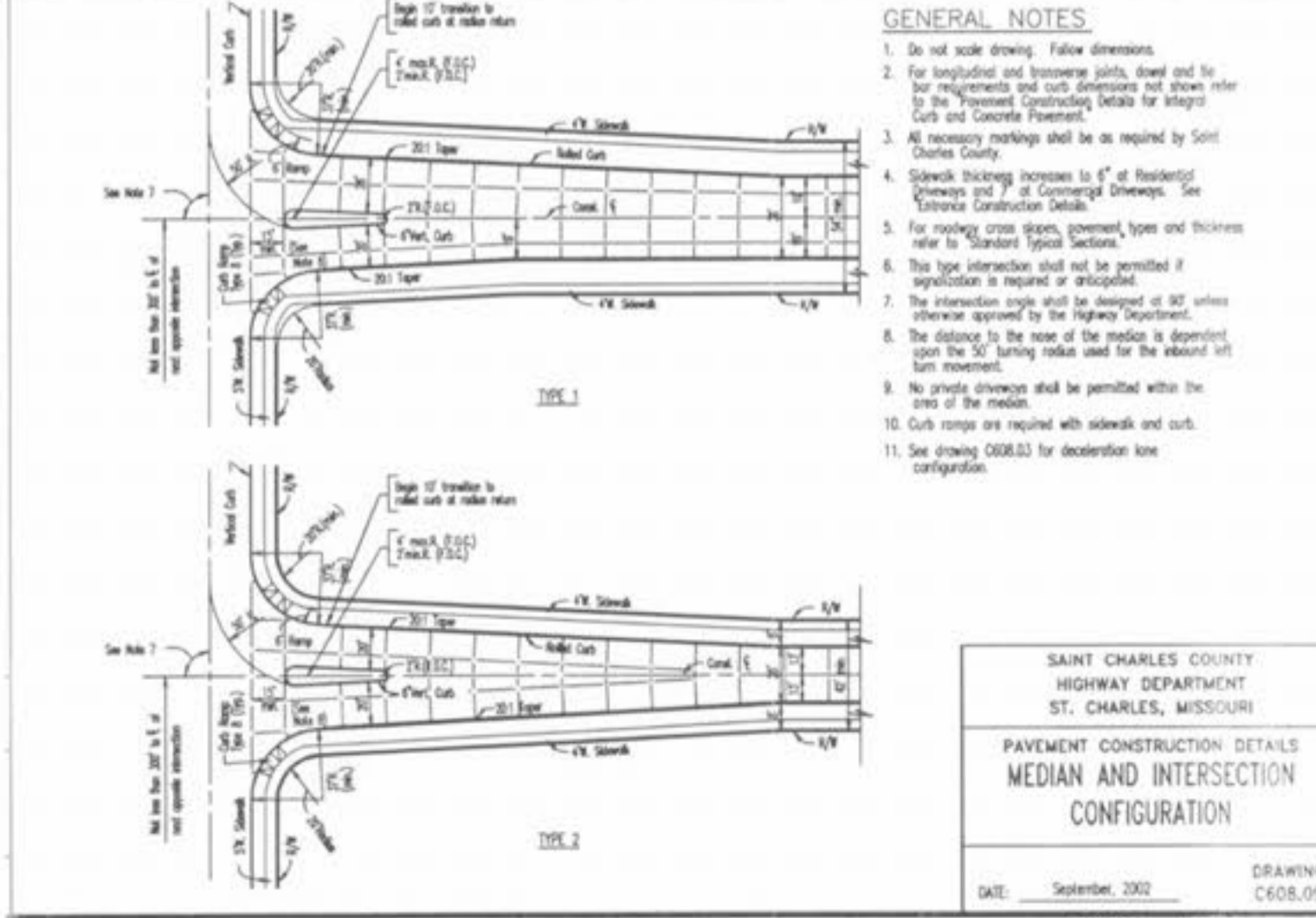
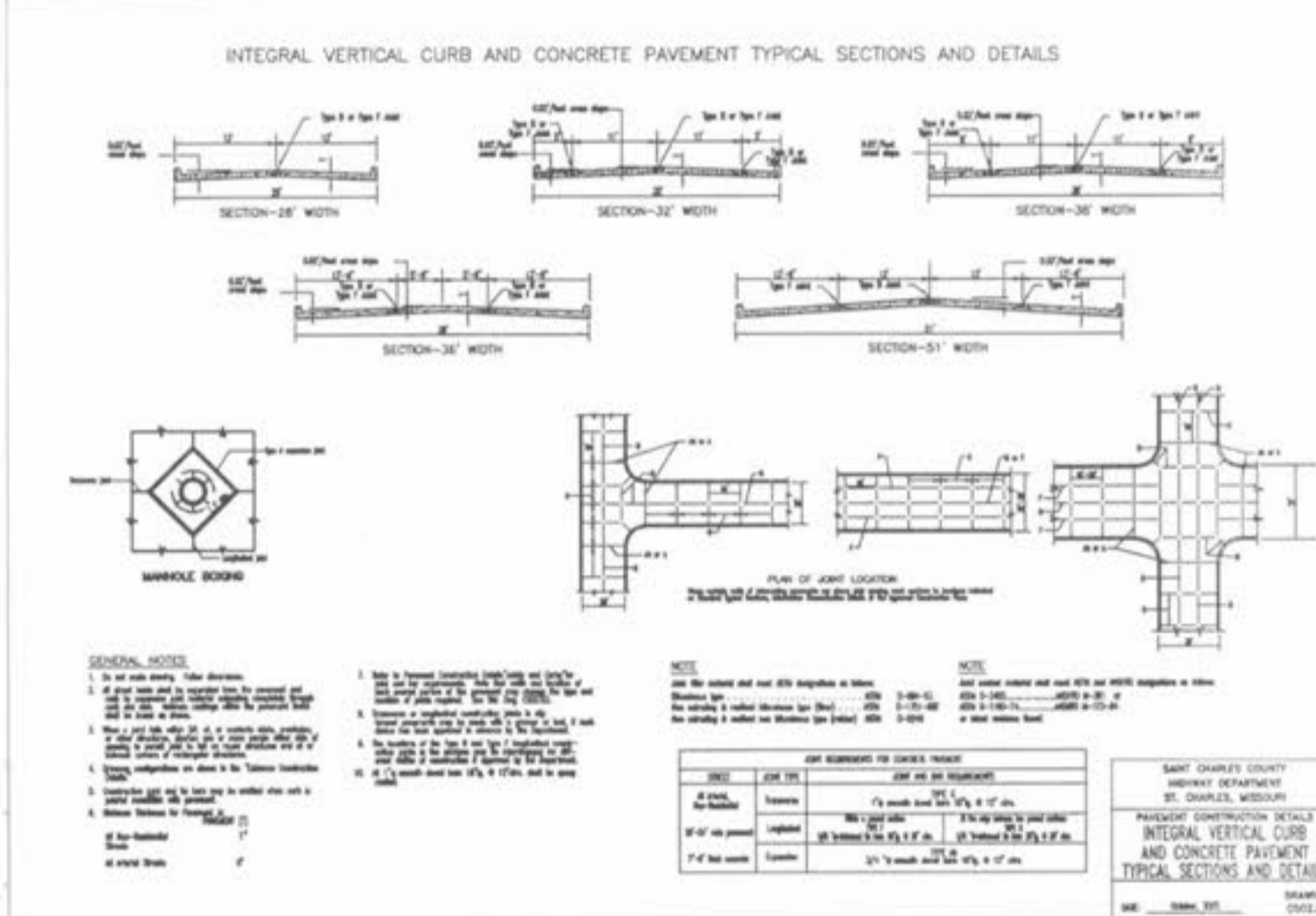
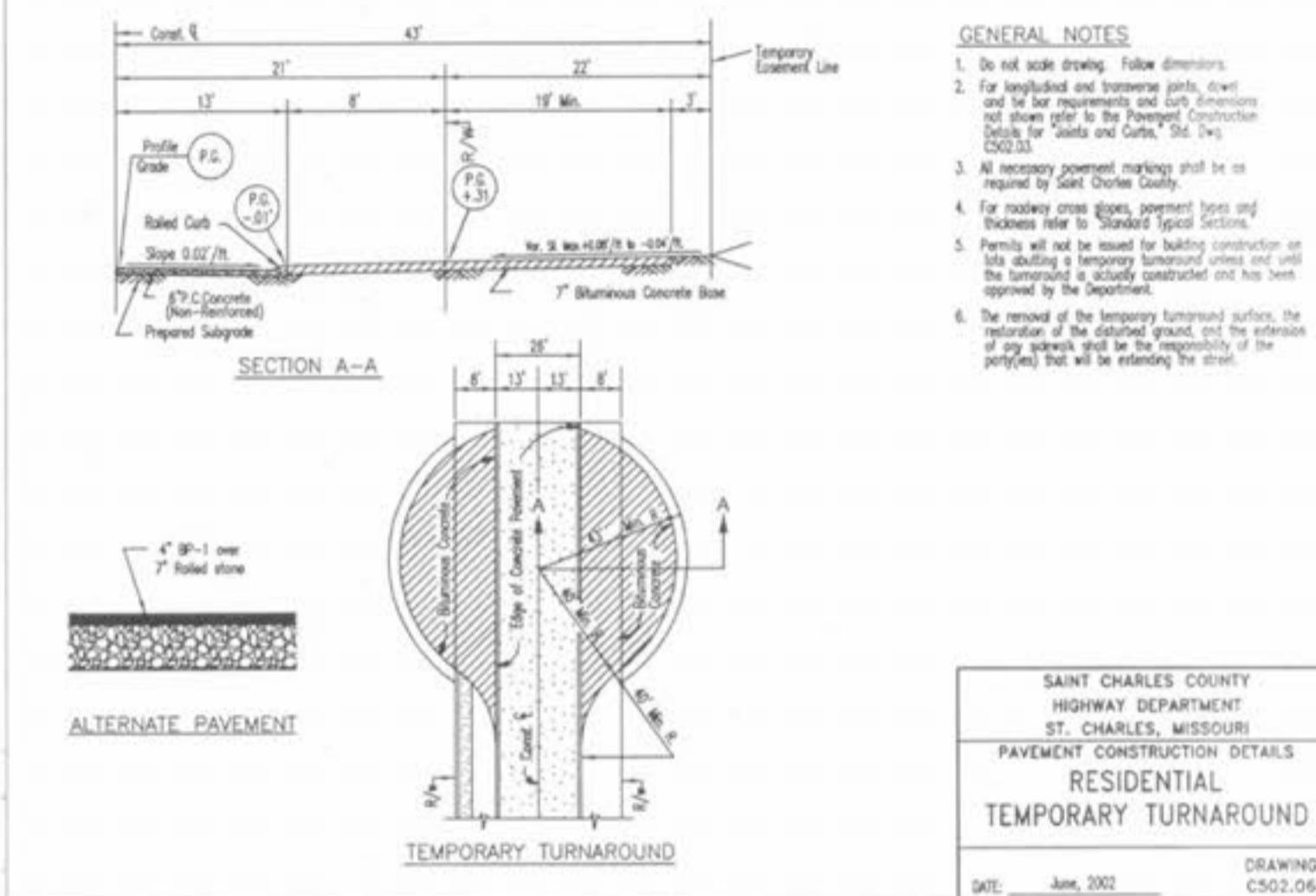
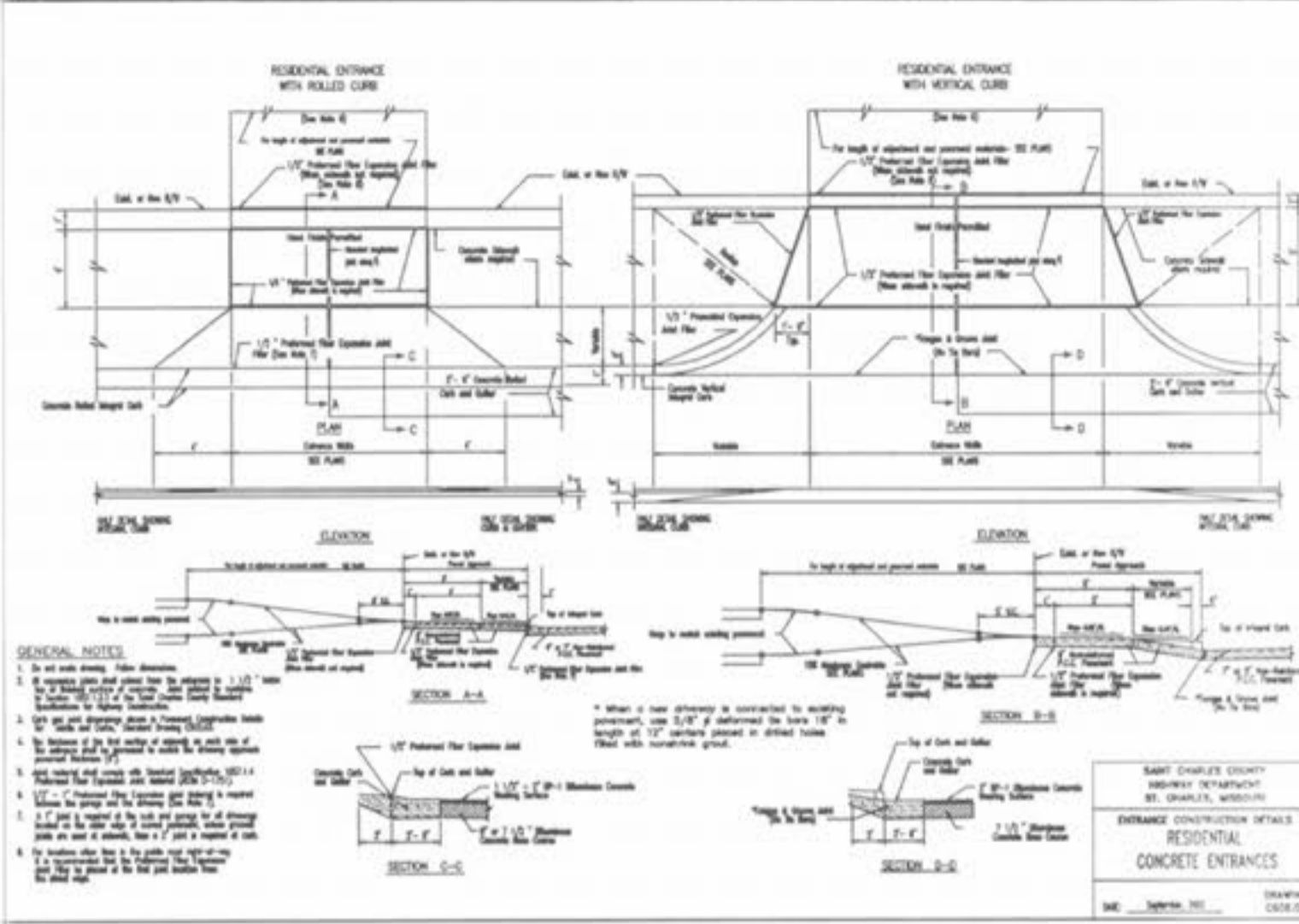
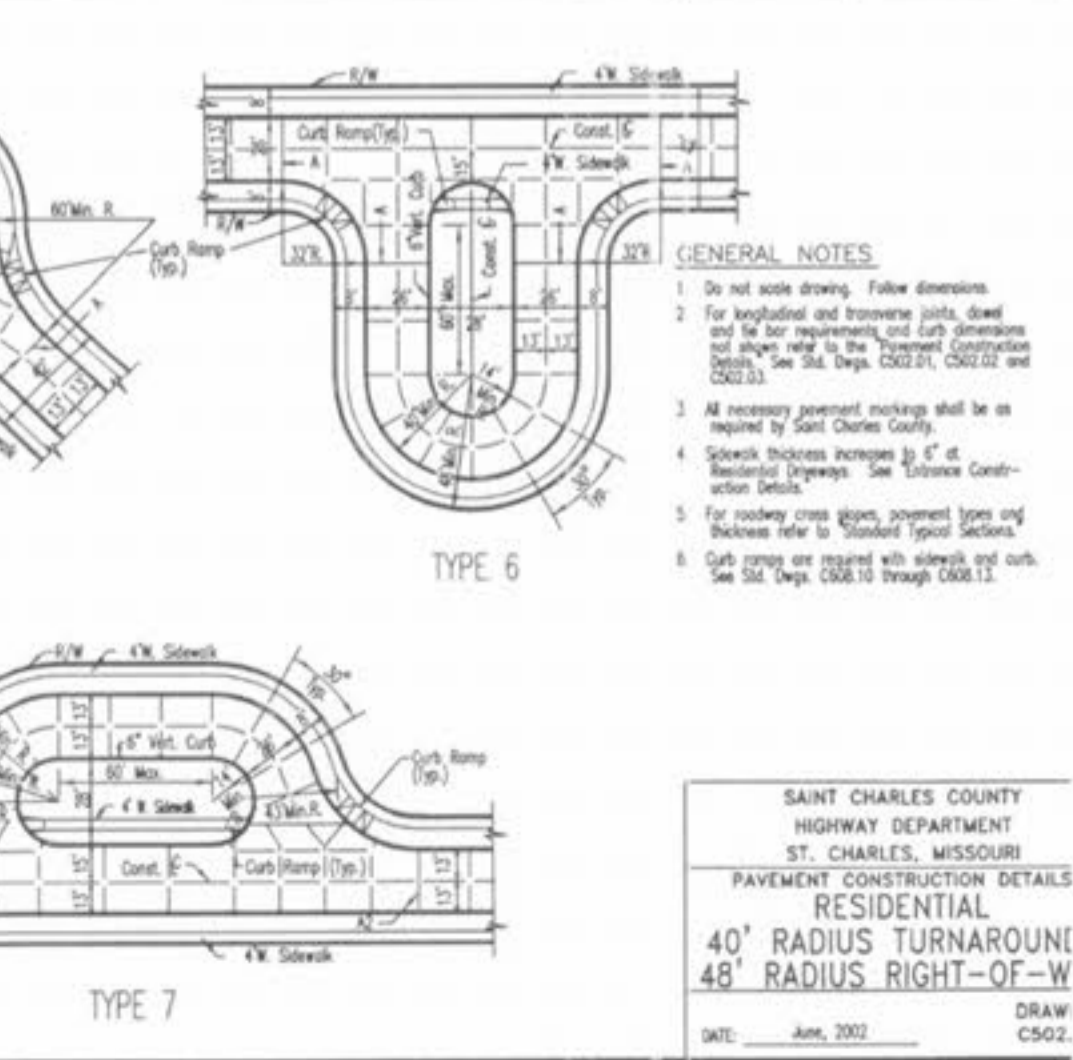
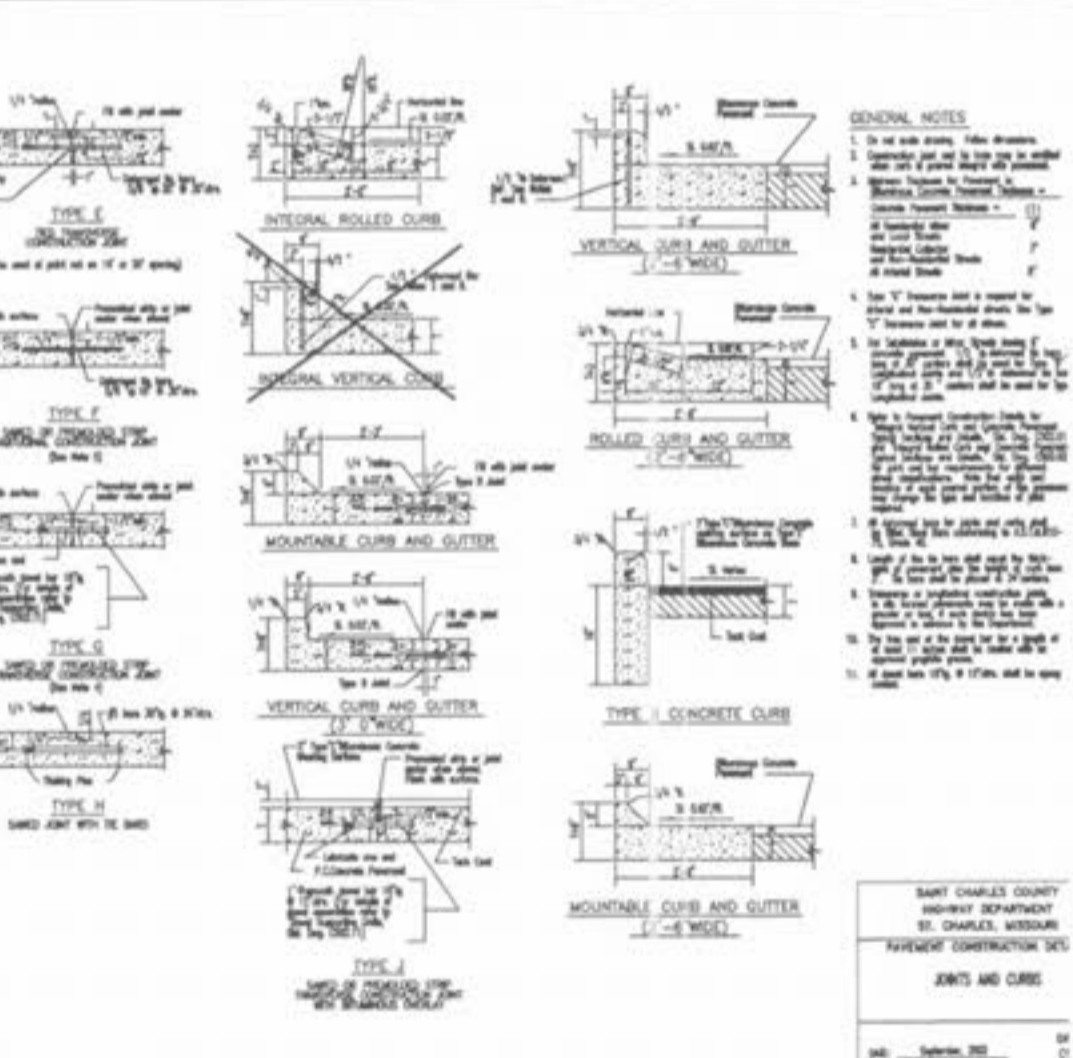
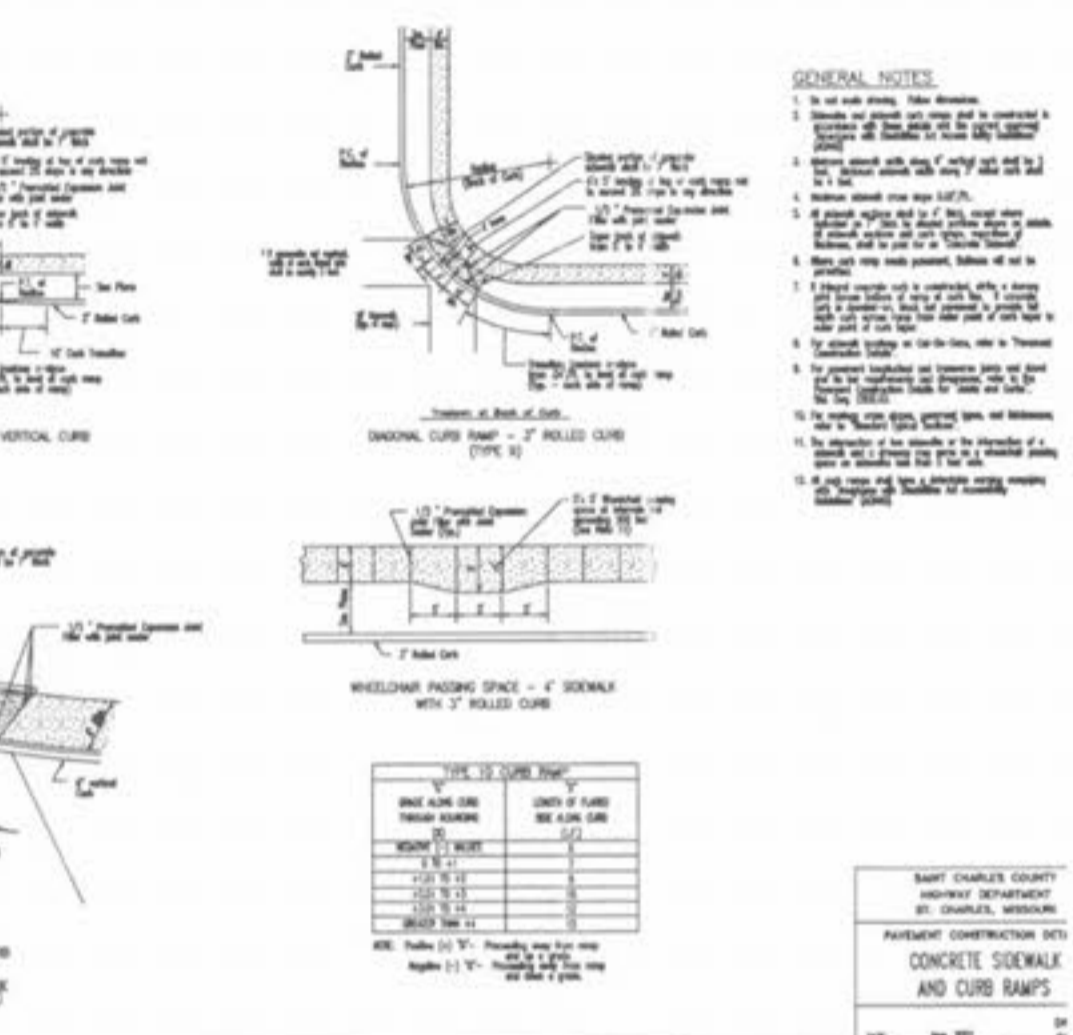
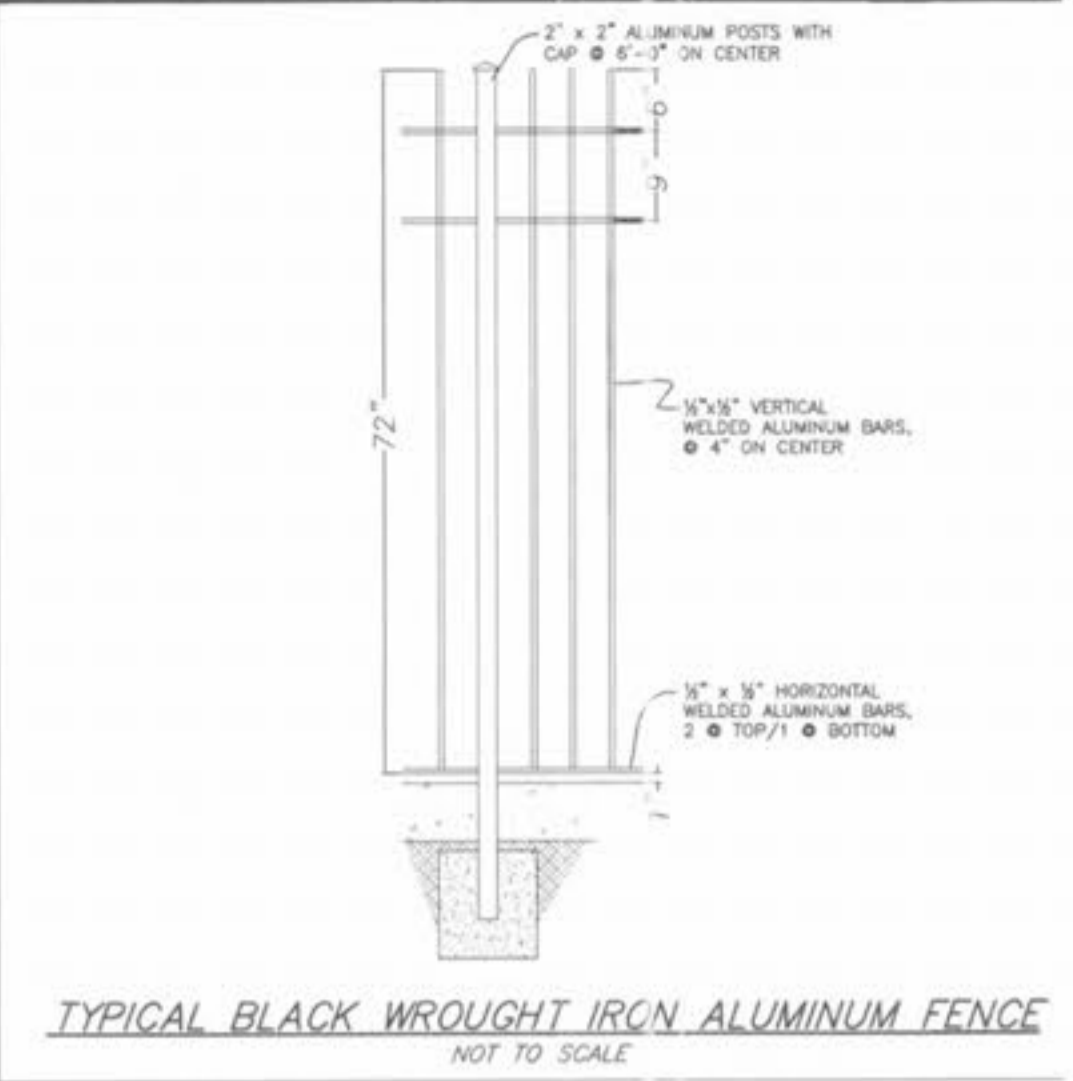
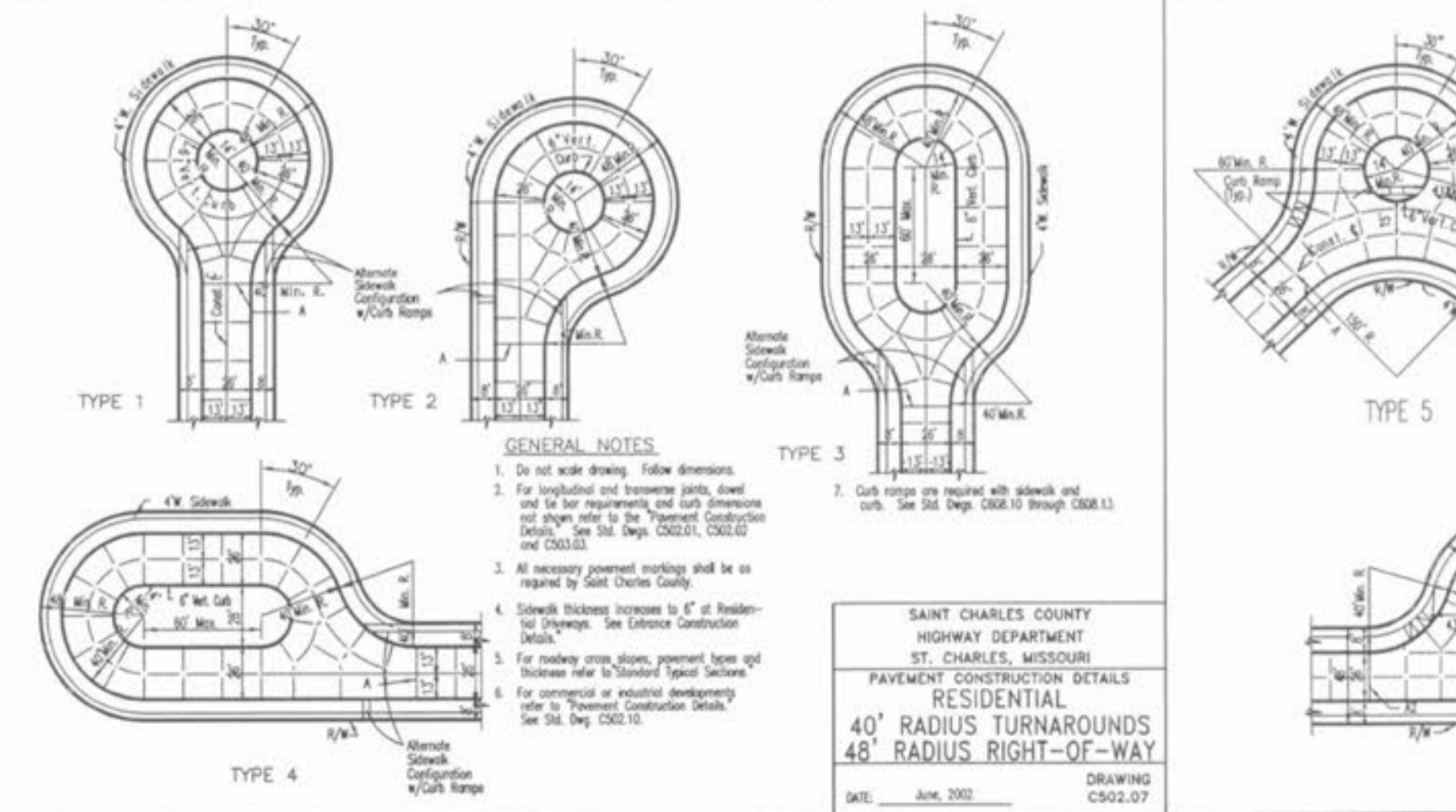
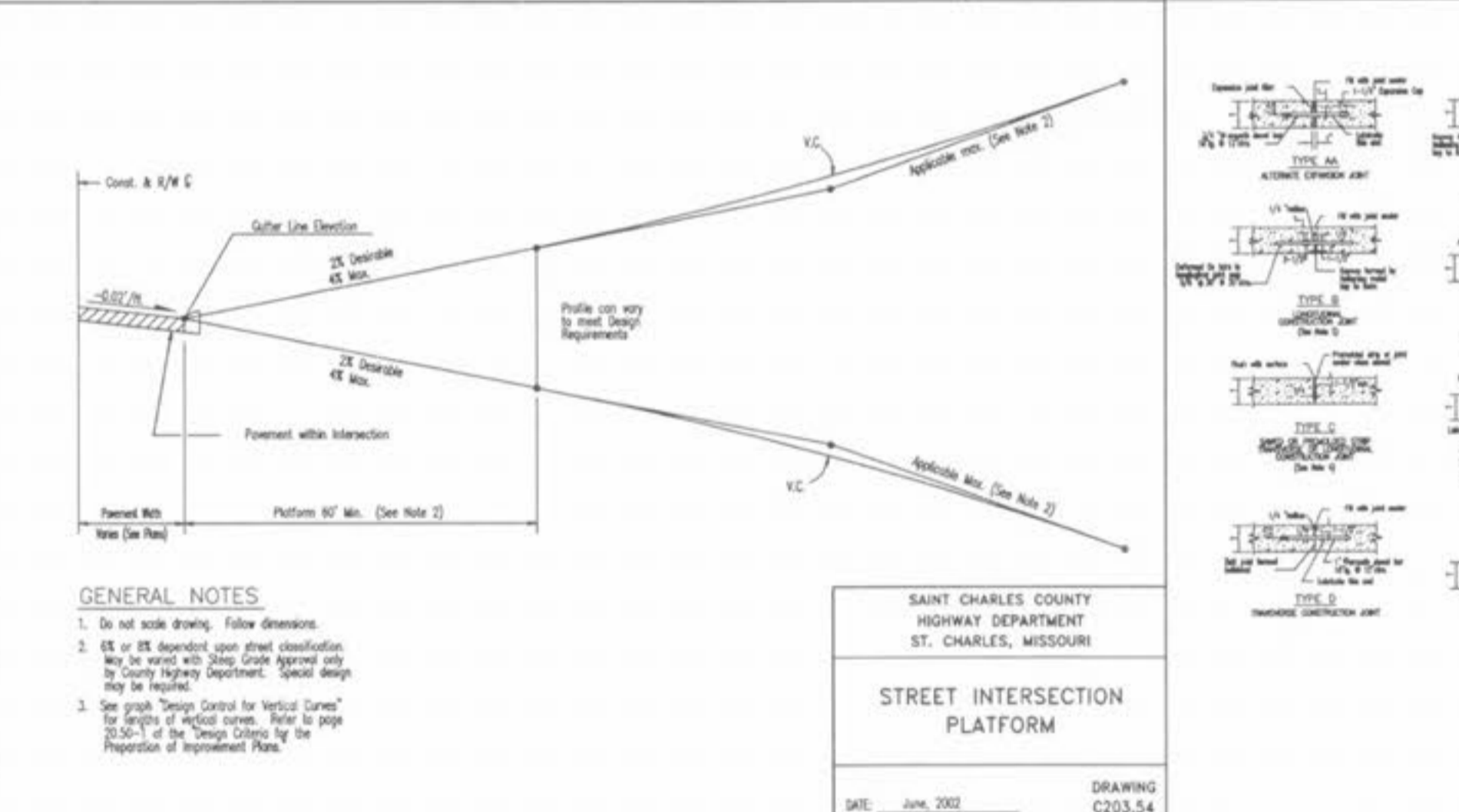
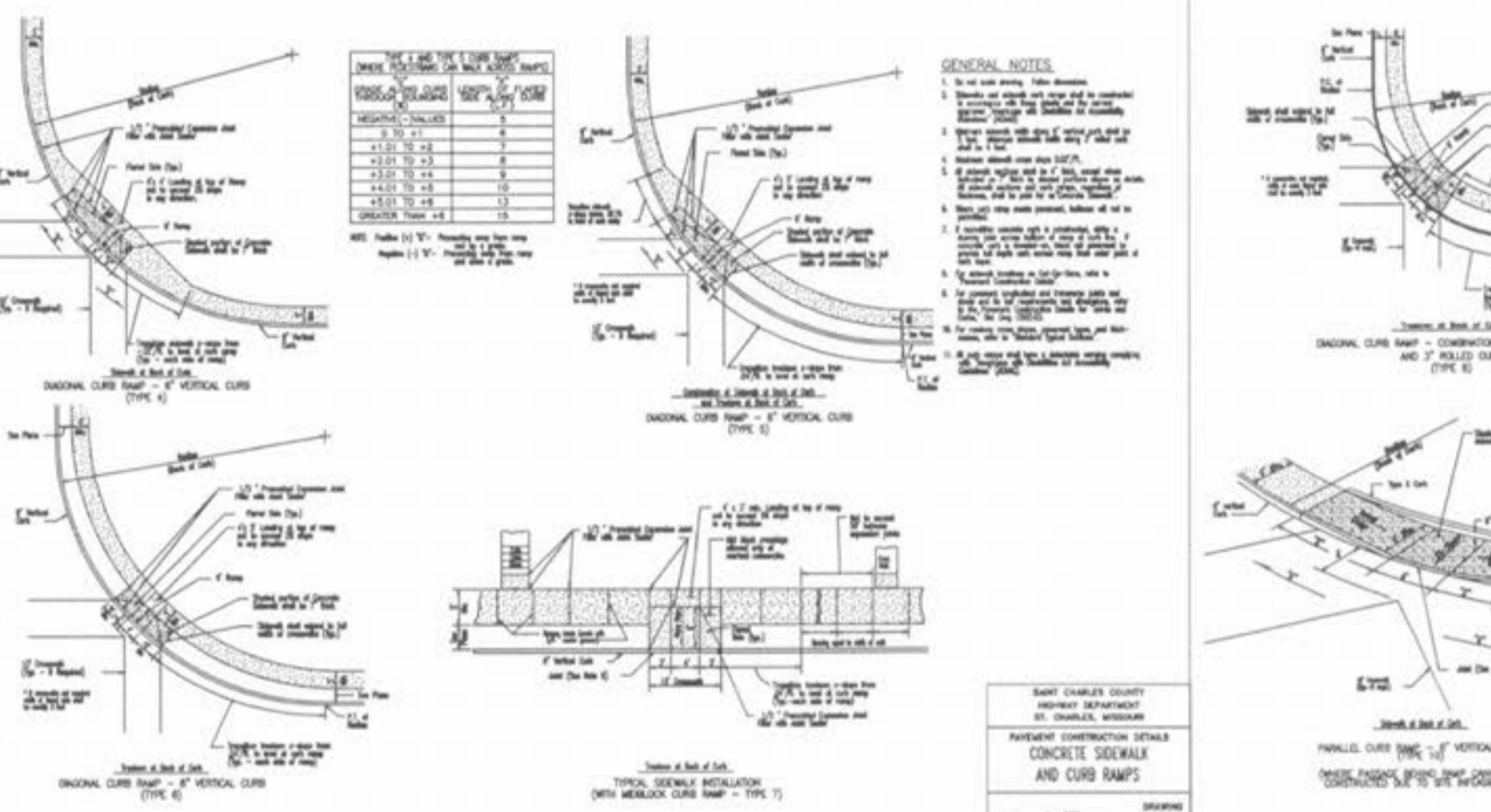
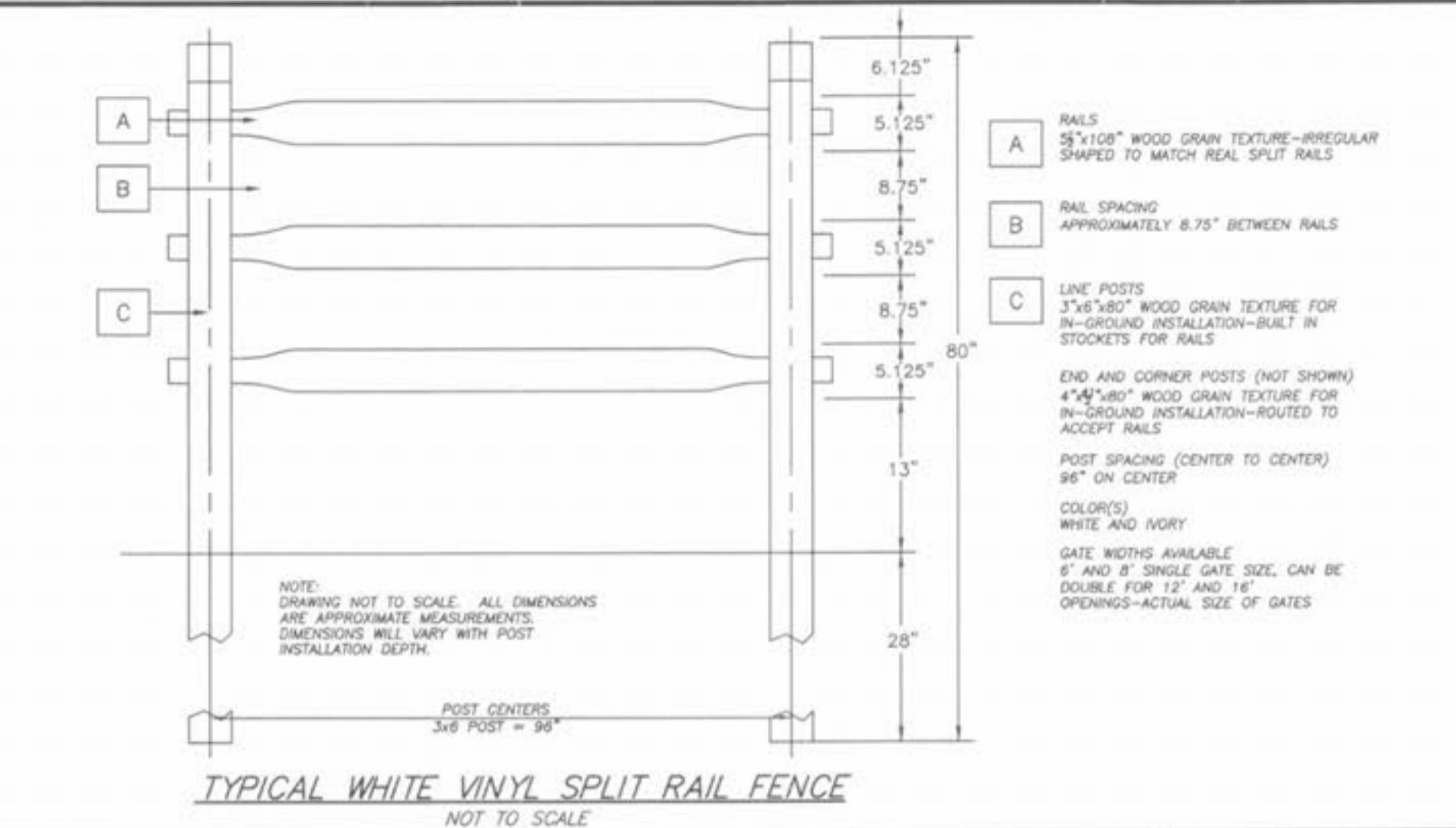
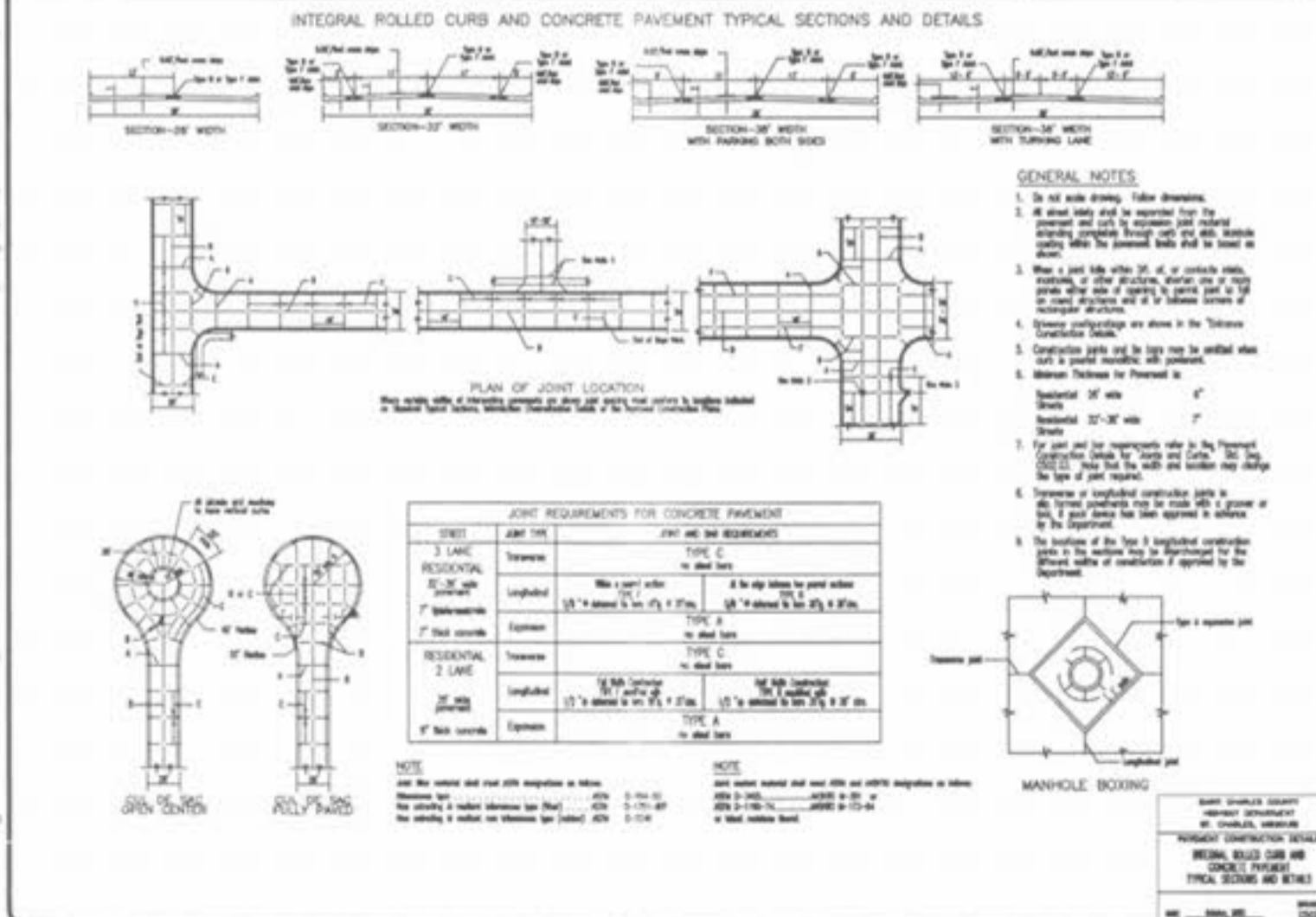
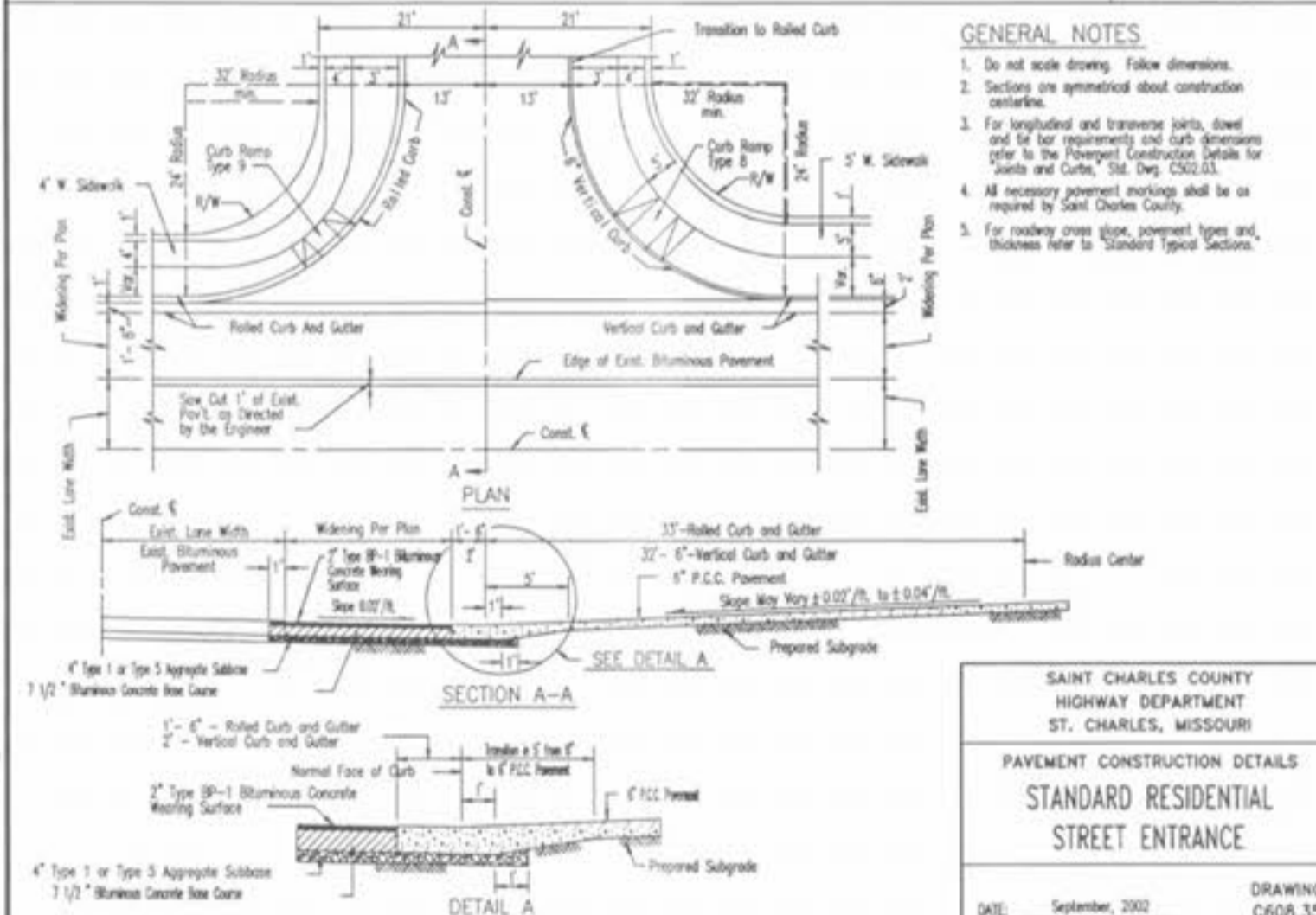
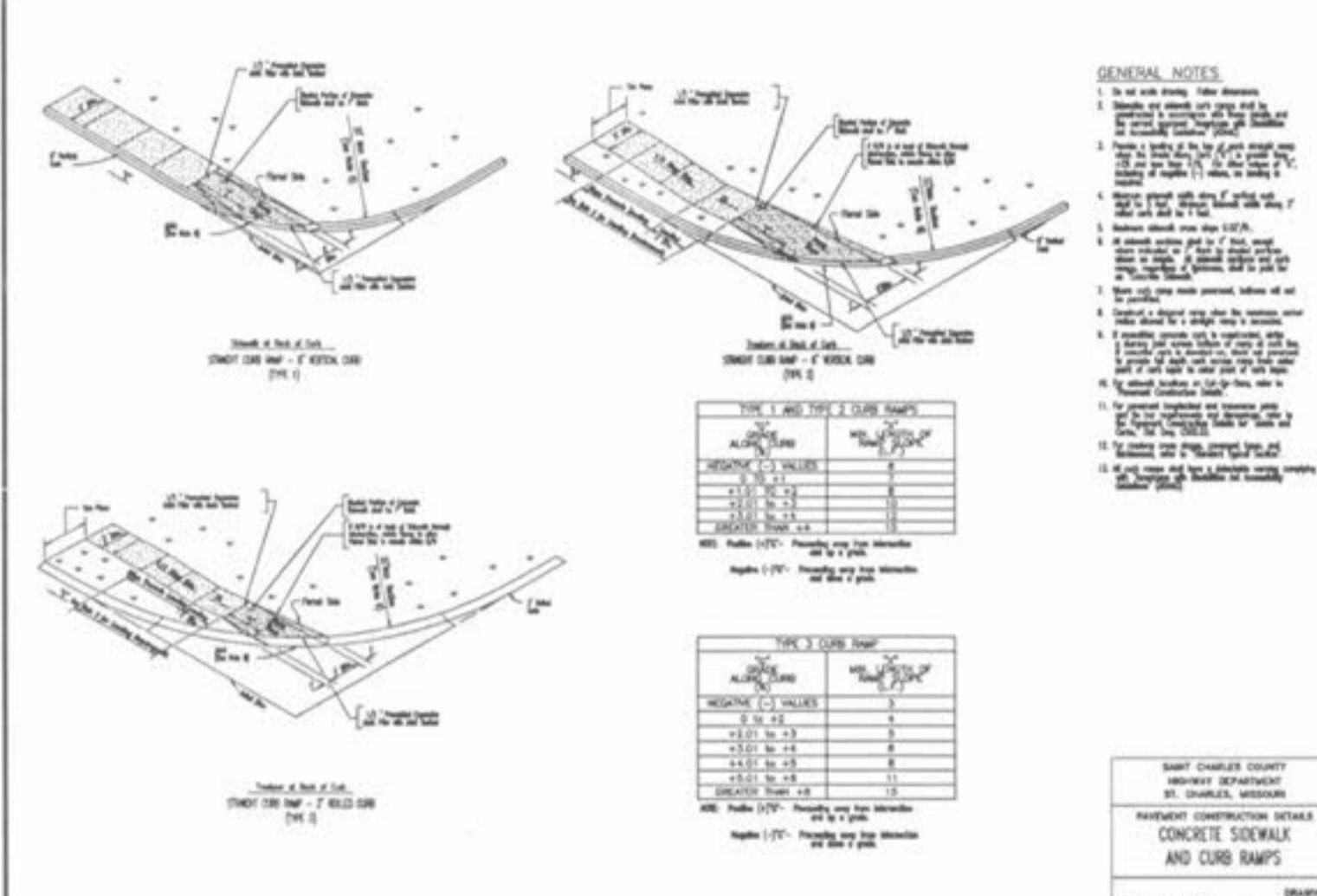
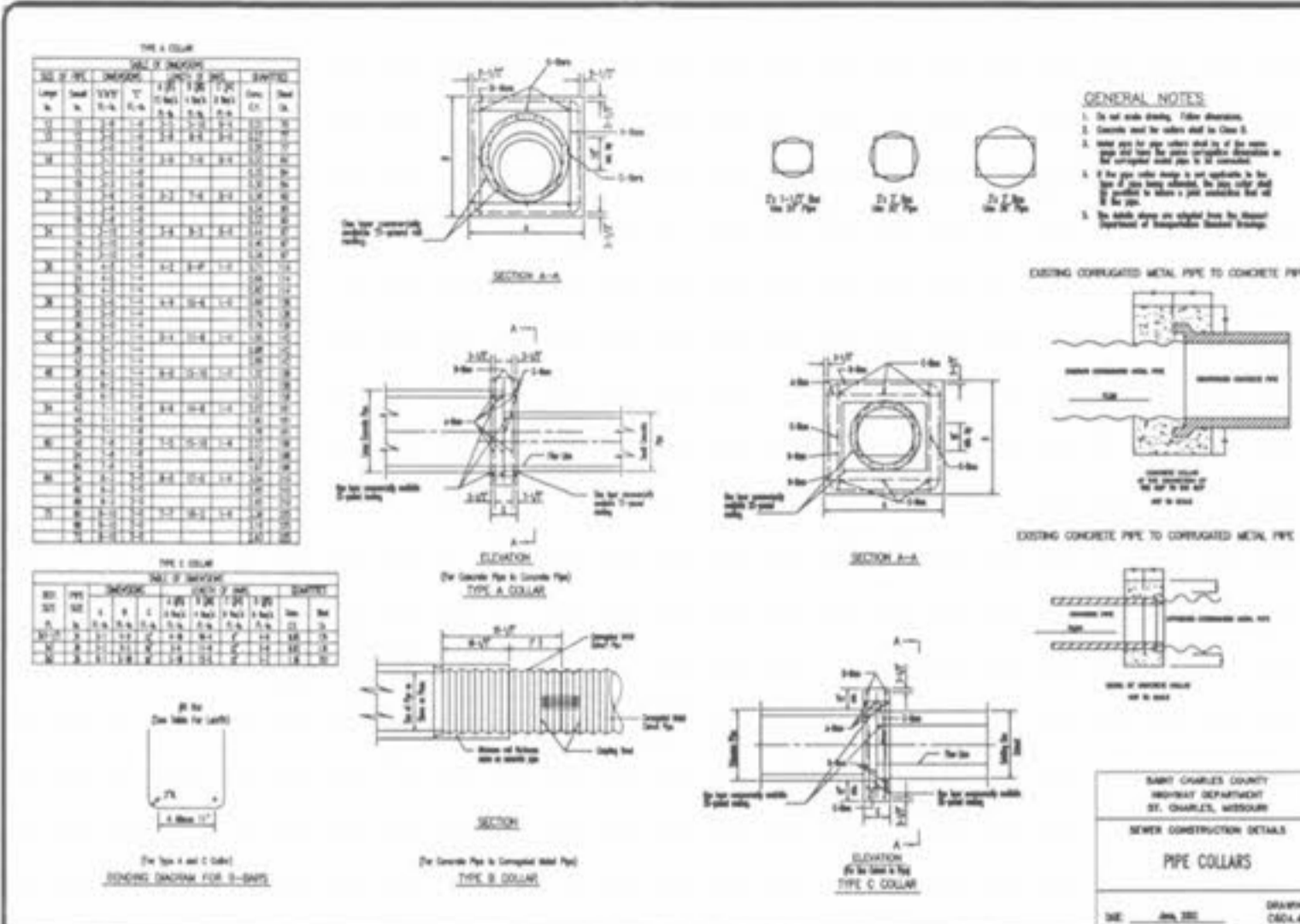


Table with 6 rows and 2 columns: ISSUE, REV PER CITY OF OFFALLOON, 19-2008

McBride & Son Homes Land Development, Inc. #1 McBride & Son Center Drive Chesterfield, Missouri 63005 (636) 537-2000



STERLING CO. ENGINEERS & SURVEYORS, INC. 5055 NEW BAUMGARTNER ROAD ST. LOUIS, MISSOURI 63129 (314)-487-0440 FAX 487-8944

PROJECT: FOX HAVEN ADDITION SHEET TITLE: ST. CHARLES COUNTY DETAILS

Table with 3 columns: NO. (04, 05, 084), P# (M.S.D.), SHEET (CD1)

DRAWING INFORMATION: DATE: September, 2002 DRAWING: C502.09