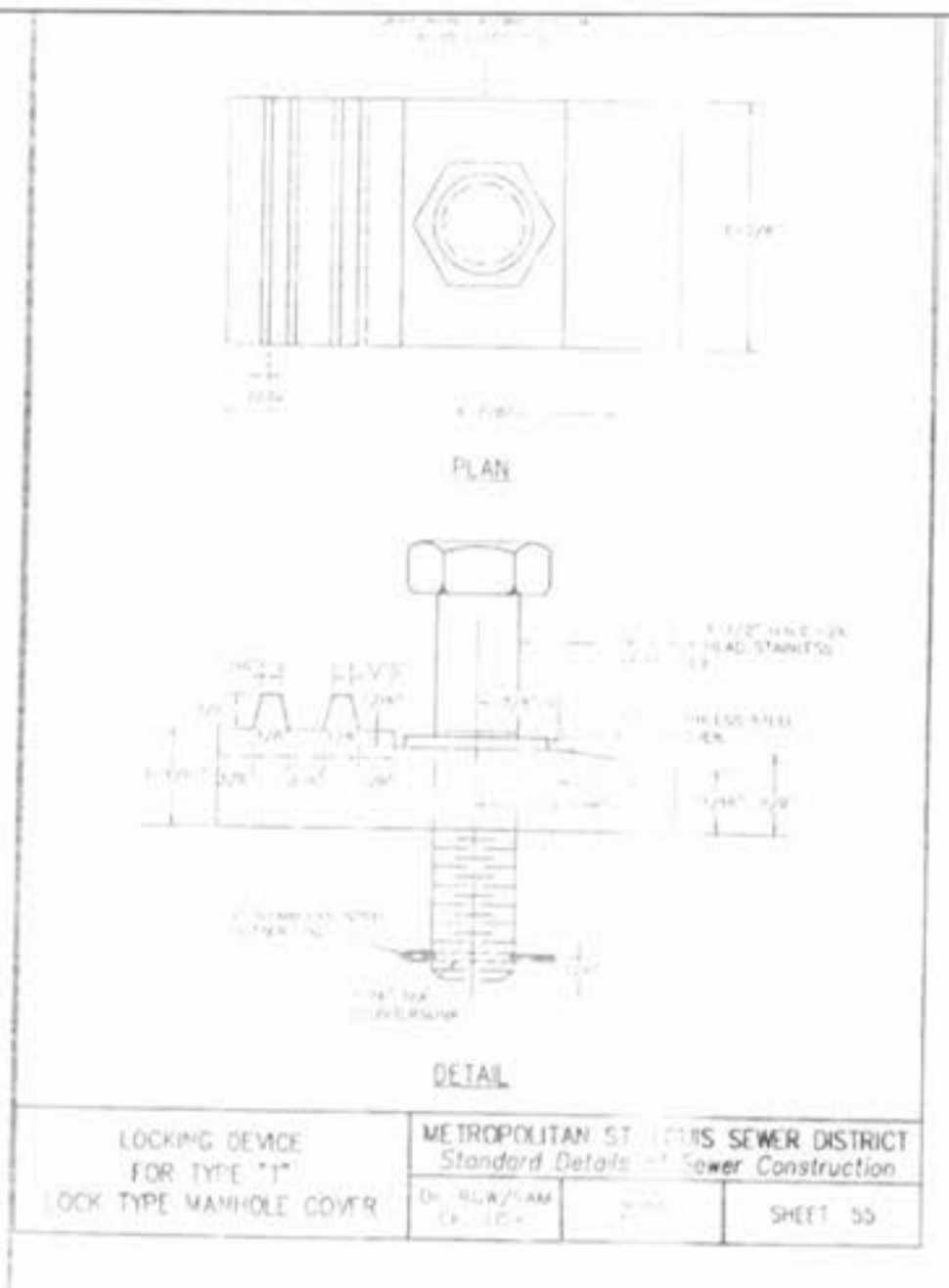
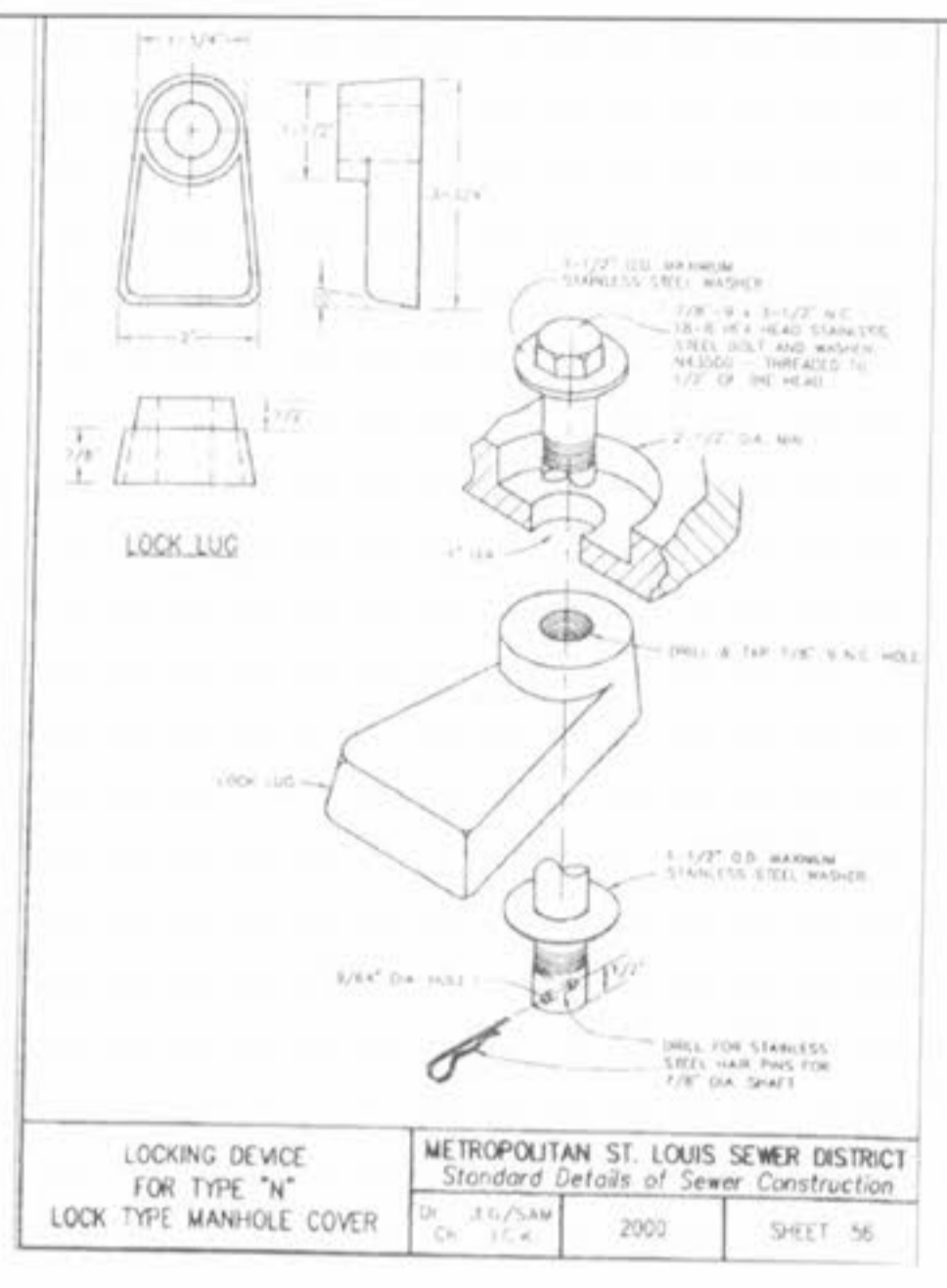


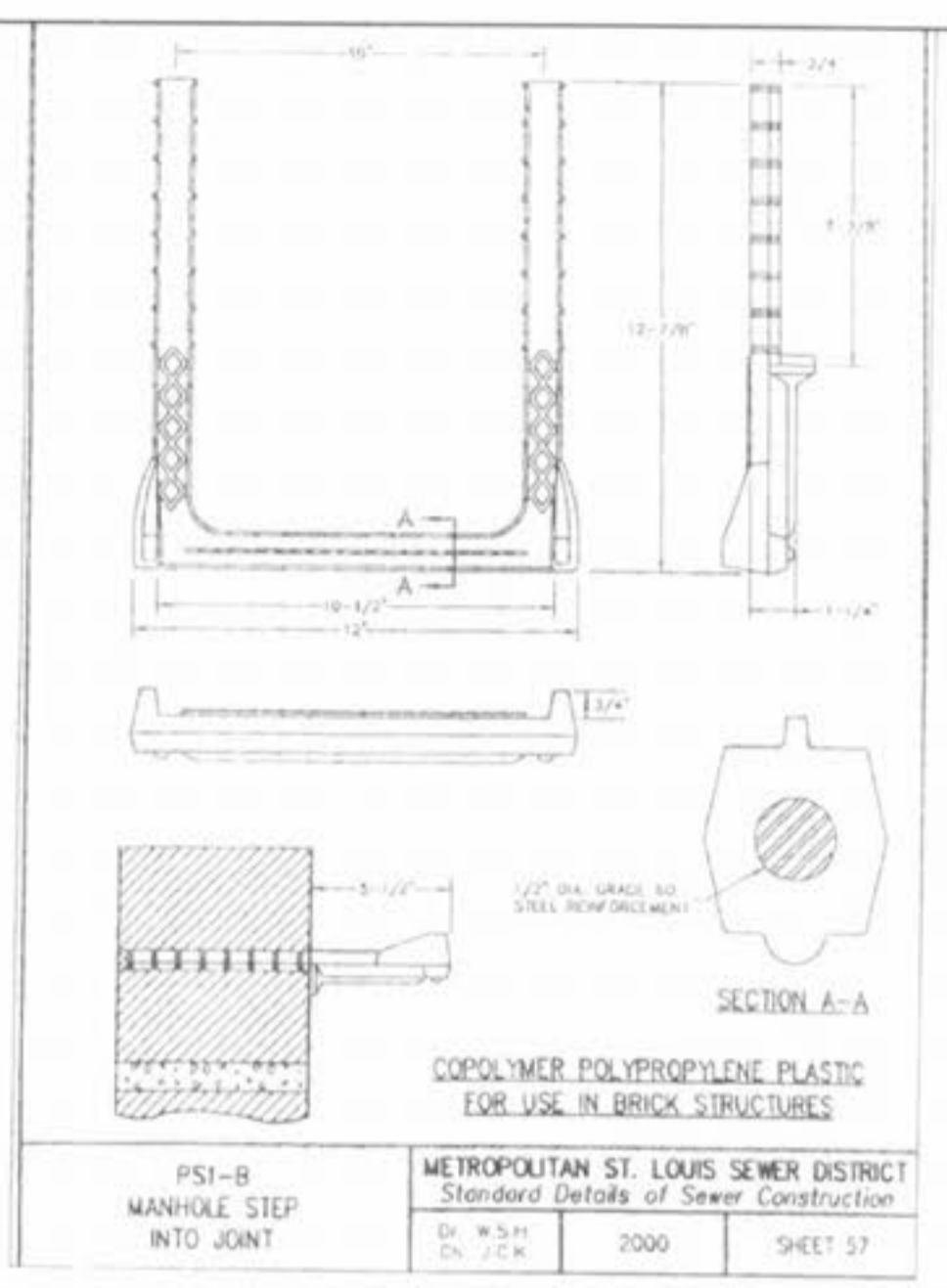
Drawing name: K:\D405084 FOX HAVEN ADDN.dwg\improvements\6147\DETAILS.dwg Plotted on: Jan 06, 2006 - 4:06pm Plotted by: wtraoug



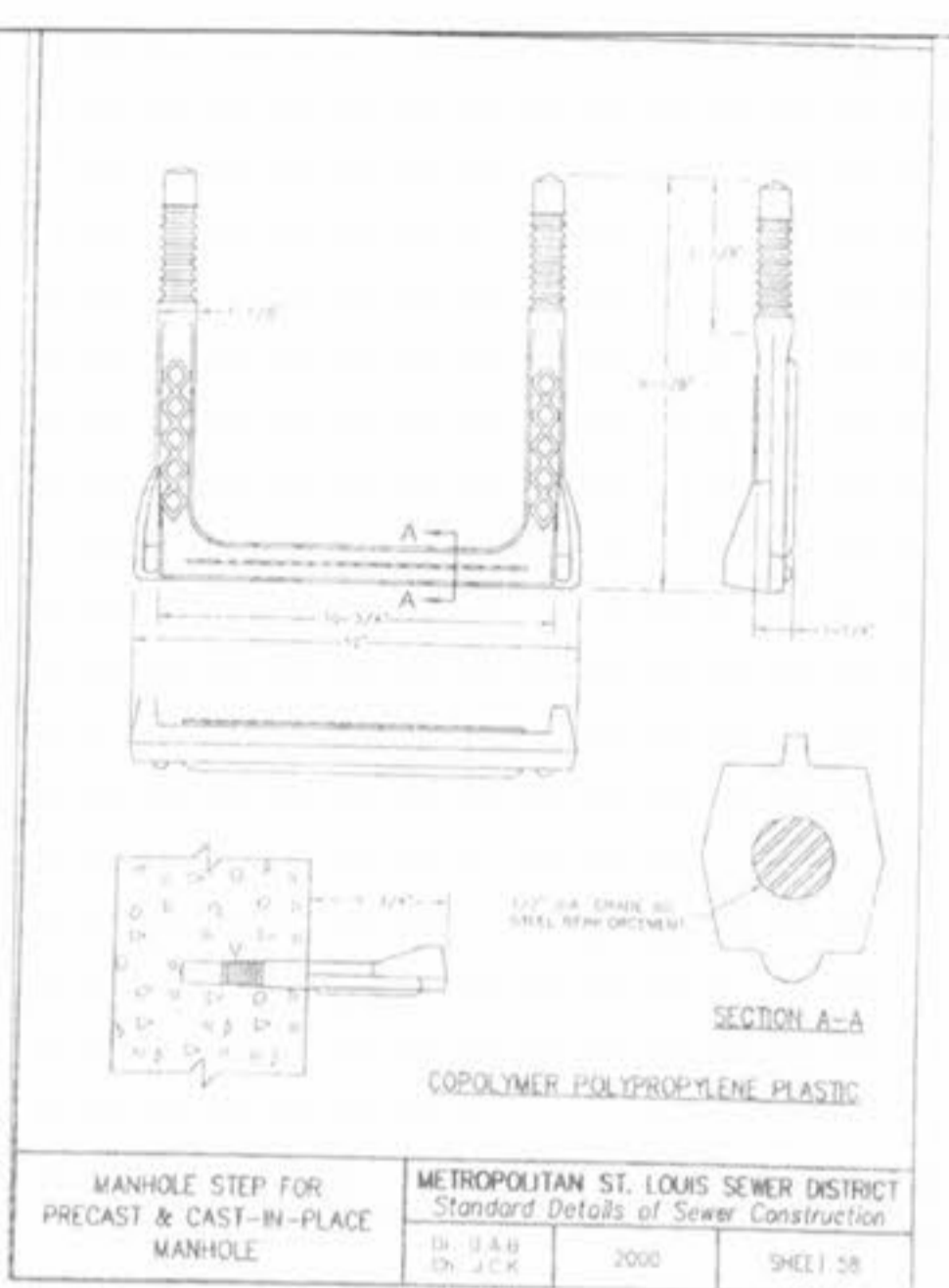
LOCKING DEVICE FOR TYPE "T" LOCK TYPE MANHOLE COVER
 METROPOLITAN ST. LOUIS SEWER DISTRICT
 Standard Details of Sewer Construction
 01 10/15/AM 2000 SHEET 55



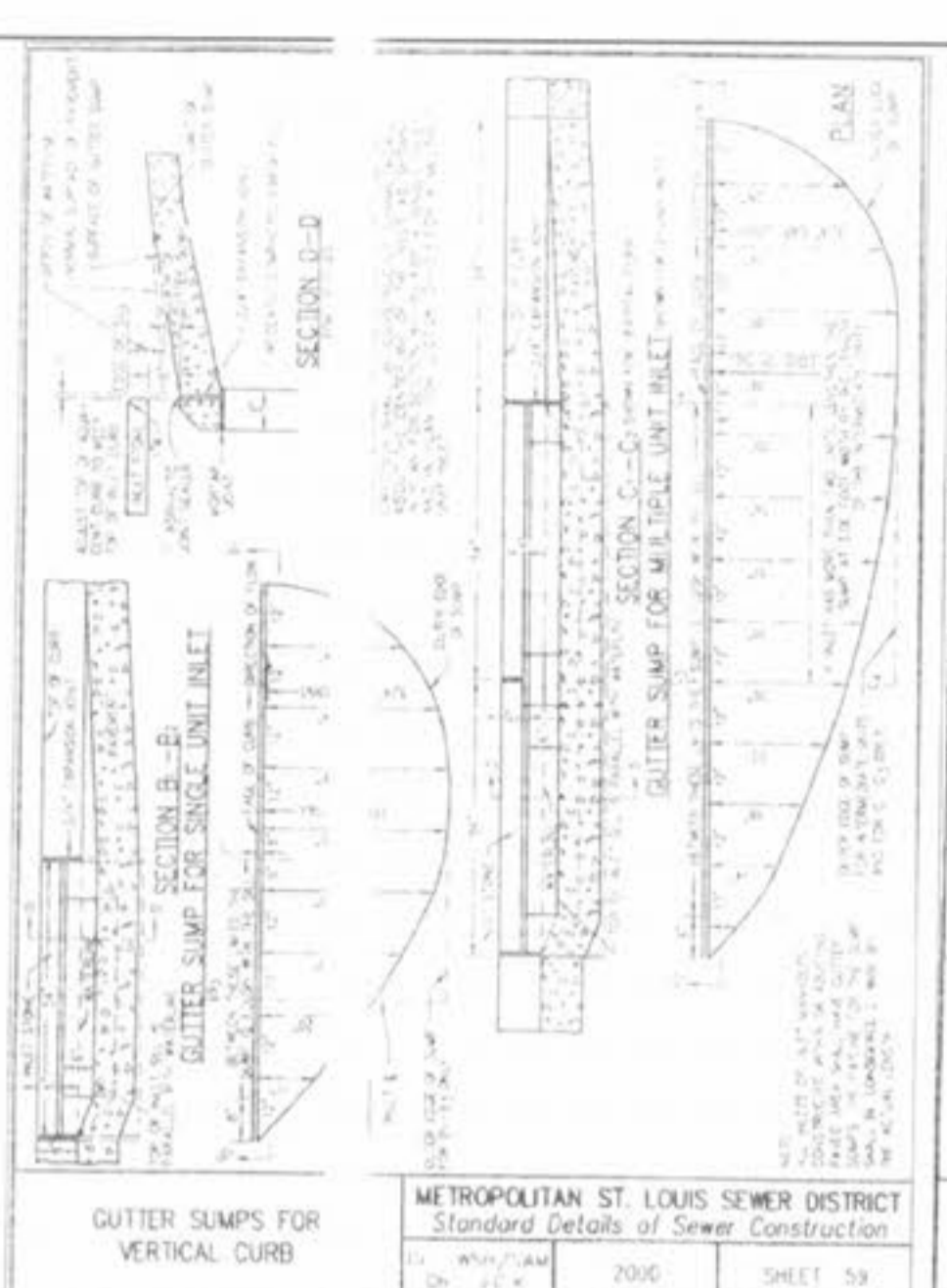
LOCKING DEVICE FOR TYPE "M" LOCK TYPE MANHOLE COVER
 METROPOLITAN ST. LOUIS SEWER DISTRICT
 Standard Details of Sewer Construction
 01 10/15/AM 2000 SHEET 56



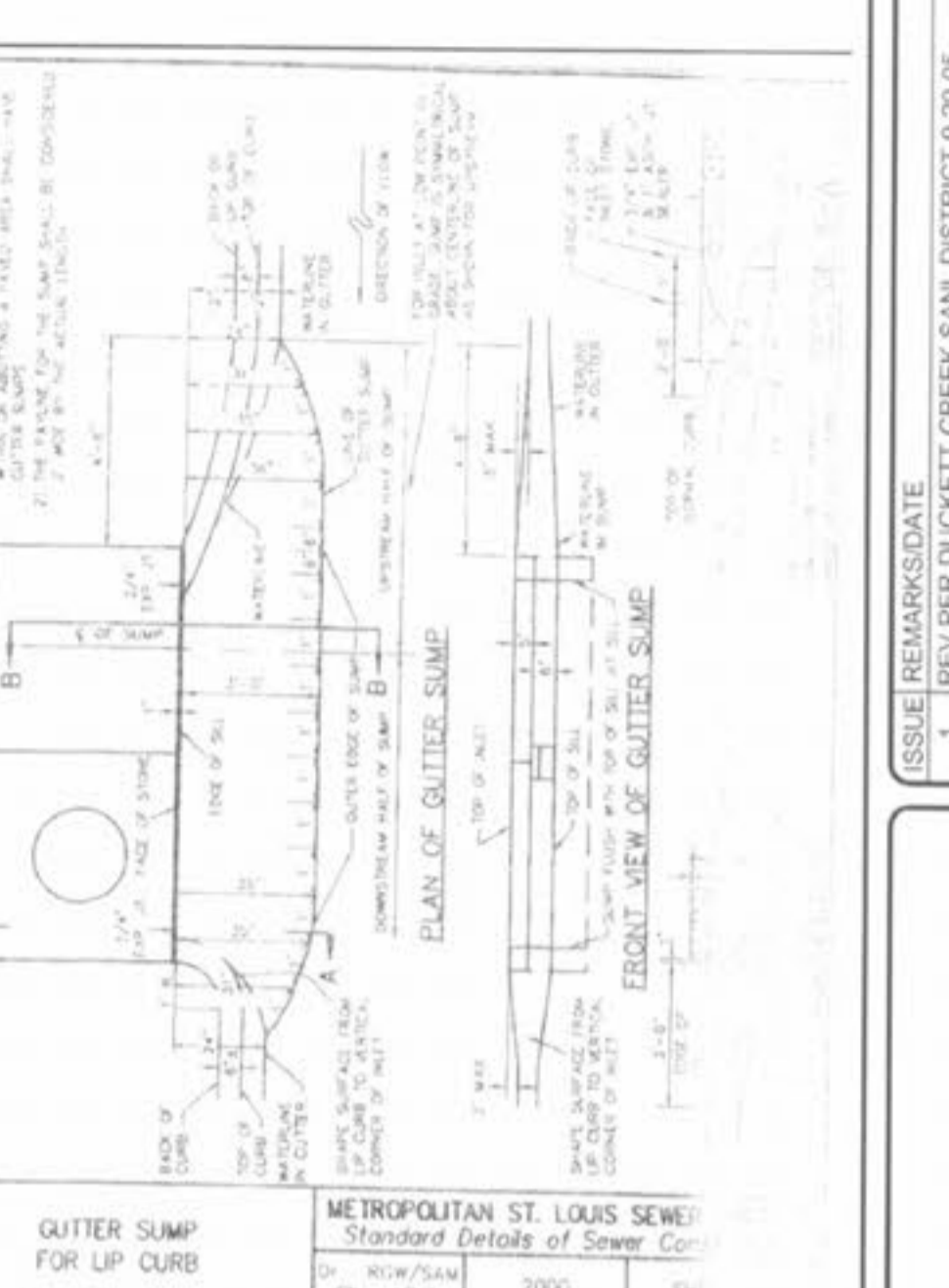
PSI-B MANHOLE STEP INTO JOINT
 METROPOLITAN ST. LOUIS SEWER DISTRICT
 Standard Details of Sewer Construction
 01 10/15/AM 2000 SHEET 57



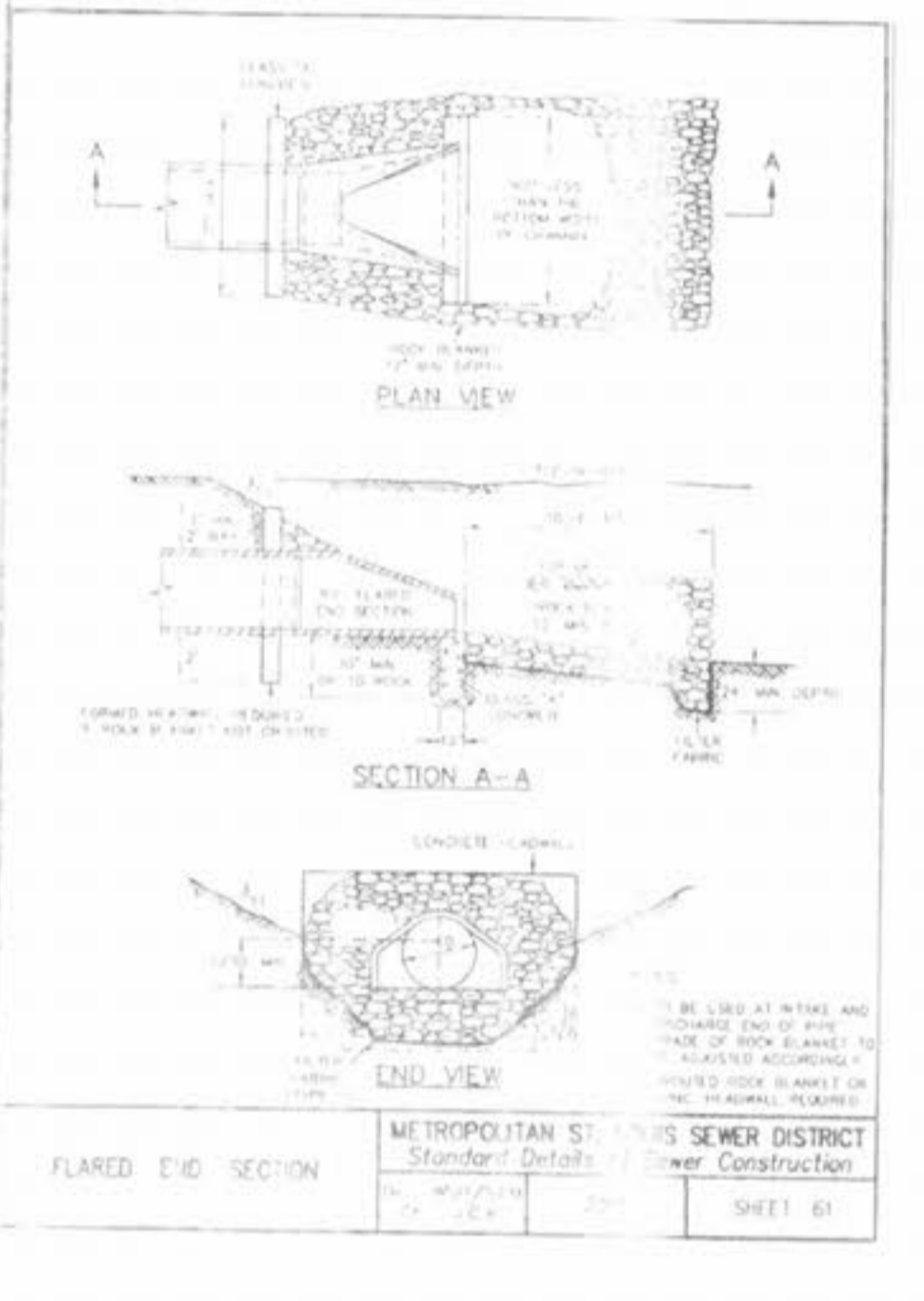
MANHOLE STEP FOR PRECAST & CAST-IN-PLACE MANHOLE
 METROPOLITAN ST. LOUIS SEWER DISTRICT
 Standard Details of Sewer Construction
 01 10/15/AM 2000 SHEET 58



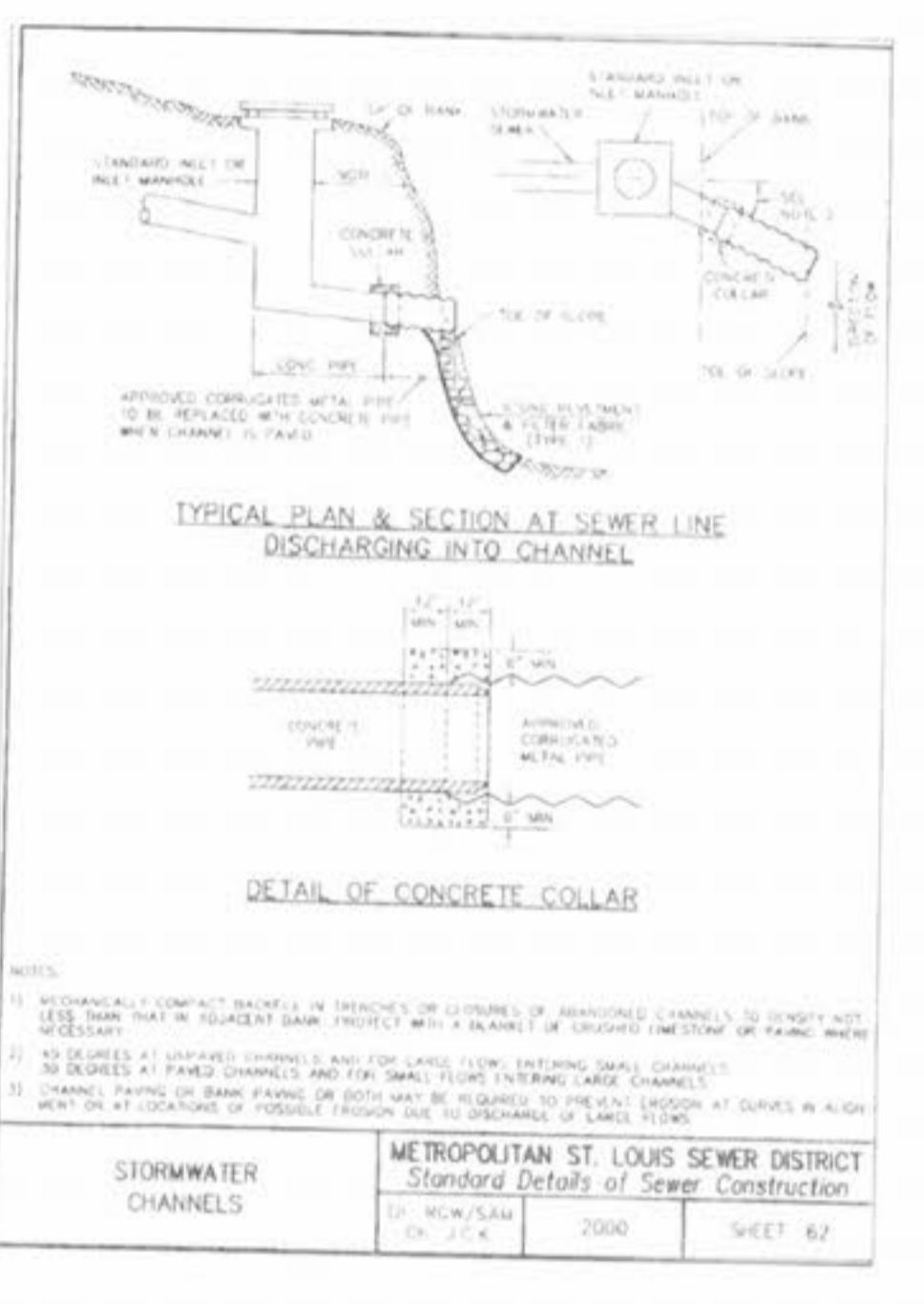
GUTTER SUMPS FOR VERTICAL CURB
 METROPOLITAN ST. LOUIS SEWER DISTRICT
 Standard Details of Sewer Construction
 01 10/15/AM 2000 SHEET 59



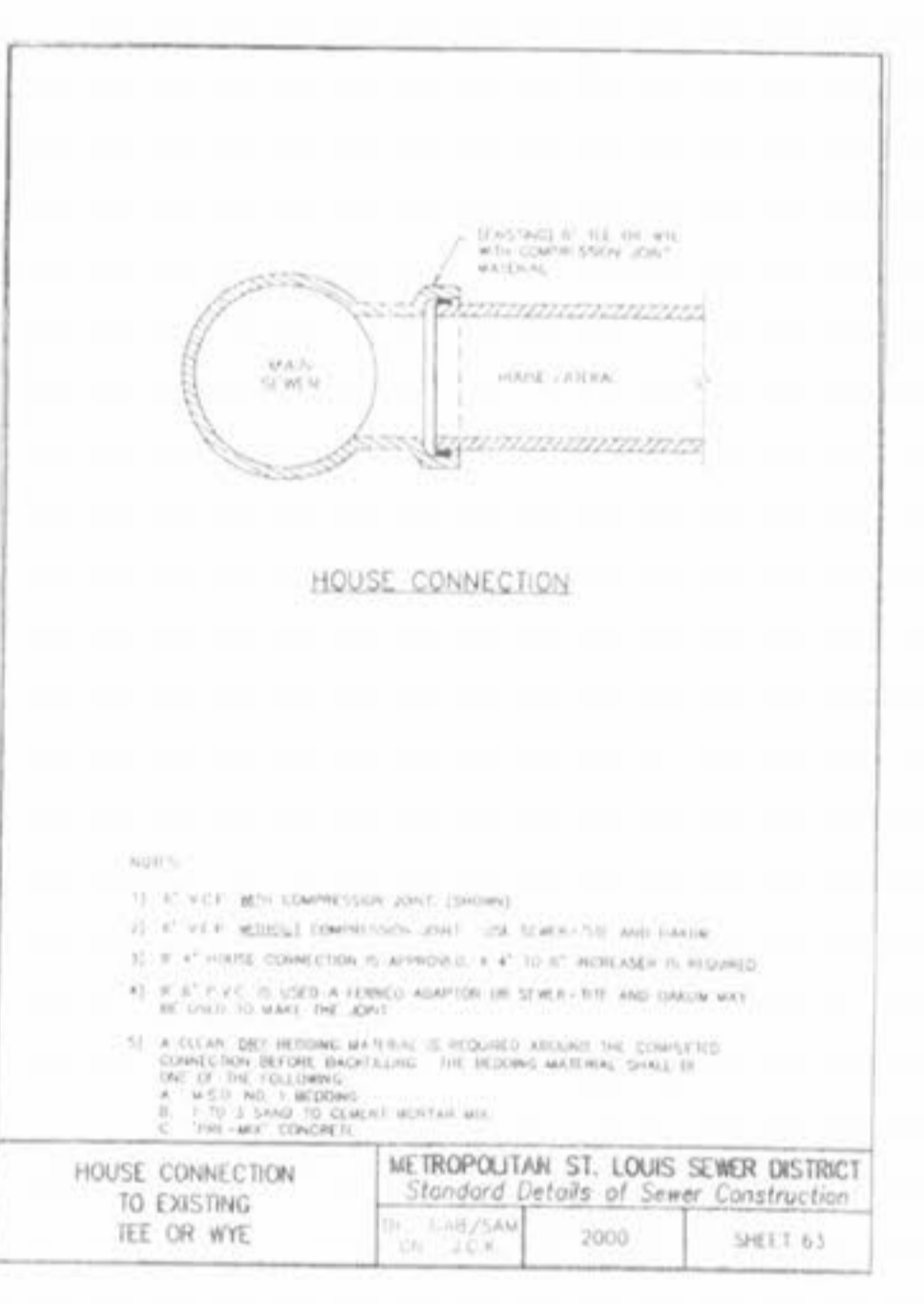
GUTTER SUMP FOR LIP CURB
 METROPOLITAN ST. LOUIS SEWER DISTRICT
 Standard Details of Sewer Construction
 01 10/15/AM 2000 SHEET 60



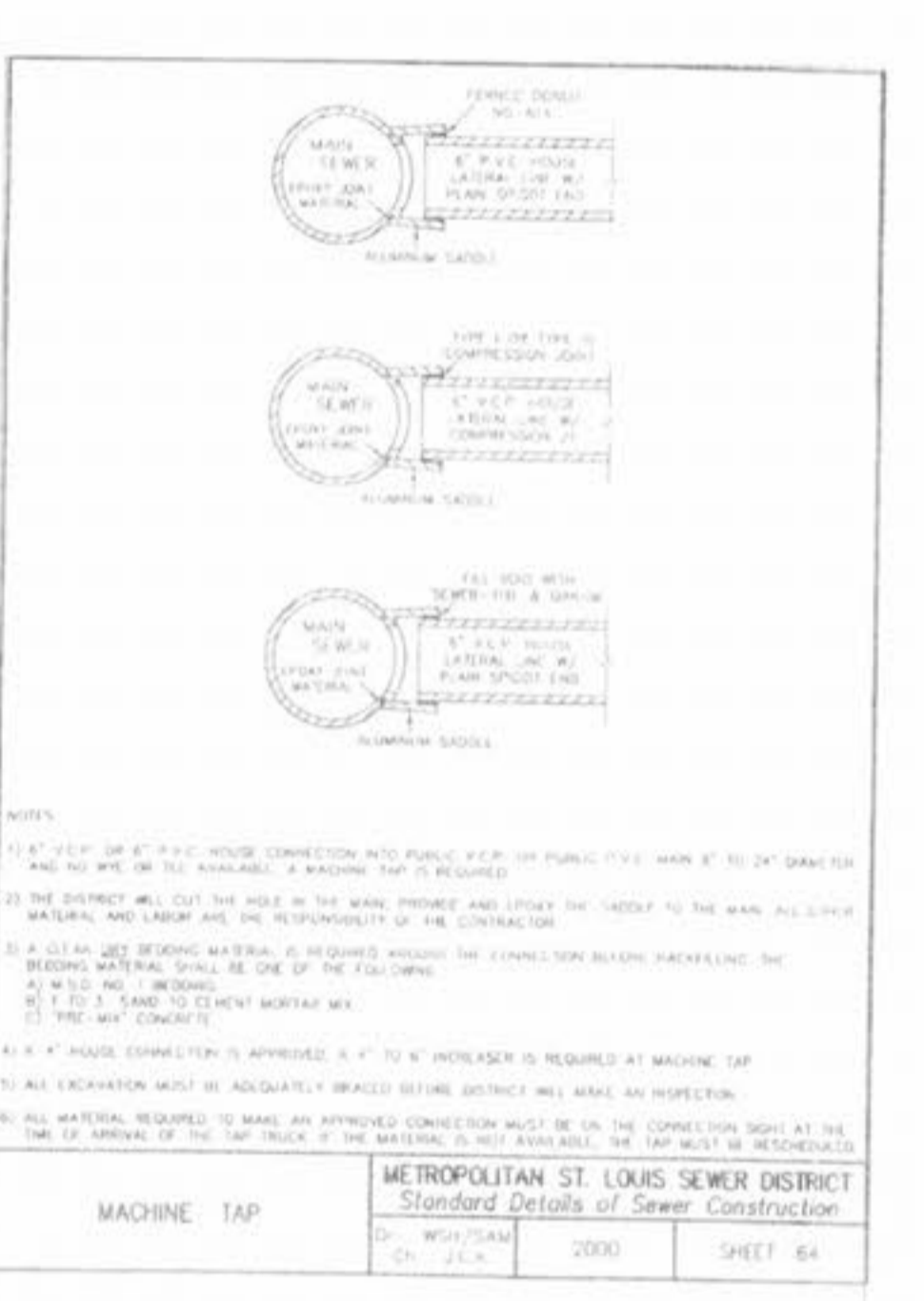
FLARED END SECTION
 METROPOLITAN ST. LOUIS SEWER DISTRICT
 Standard Details of Sewer Construction
 01 10/15/AM 2000 SHEET 61



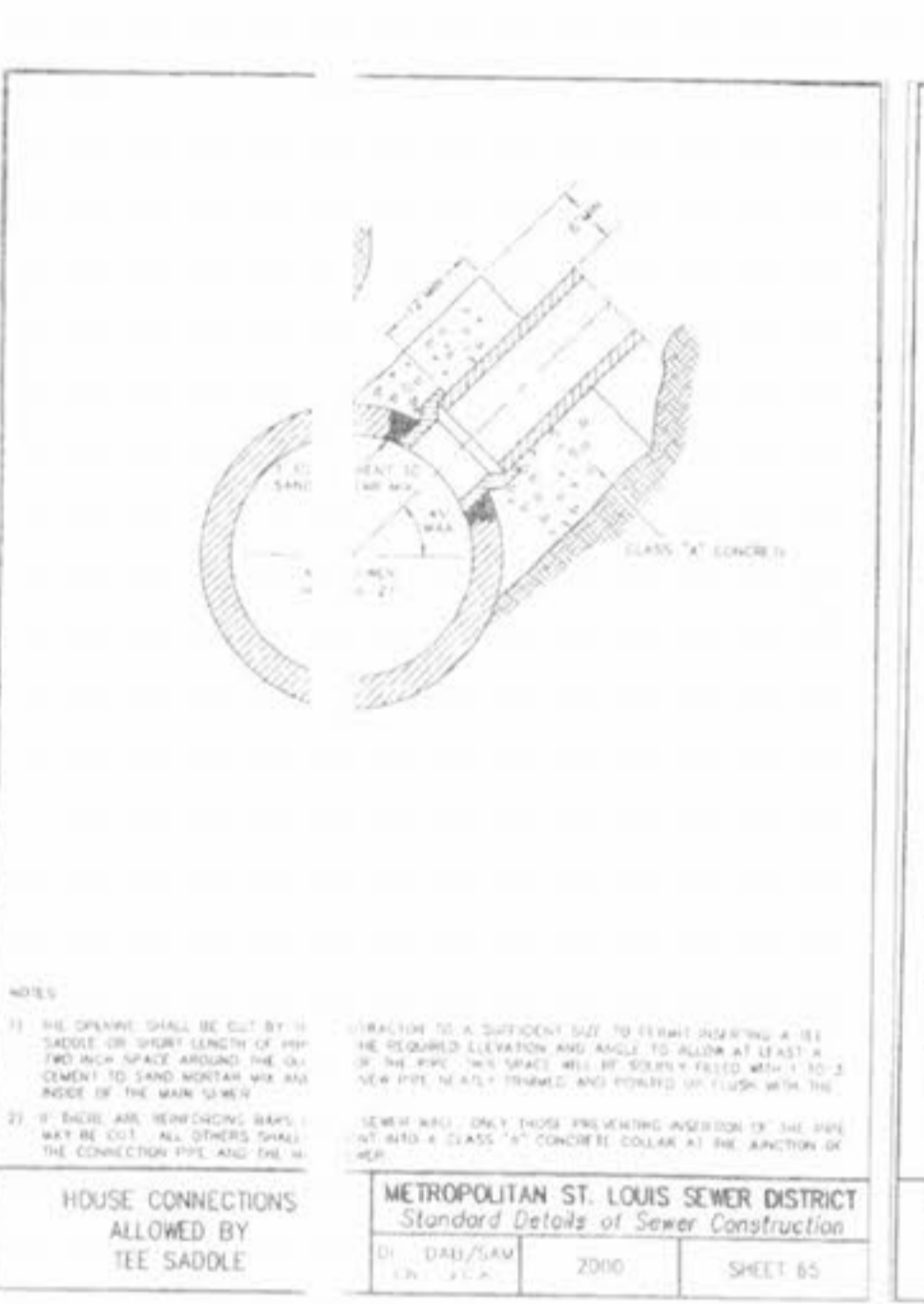
TYPICAL PLAN & SECTION AT SEWER LINE DISCHARGING INTO CHANNEL
 DETAIL OF CONCRETE COLLAR
 STORMWATER CHANNELS
 METROPOLITAN ST. LOUIS SEWER DISTRICT
 Standard Details of Sewer Construction
 01 10/15/AM 2000 SHEET 62



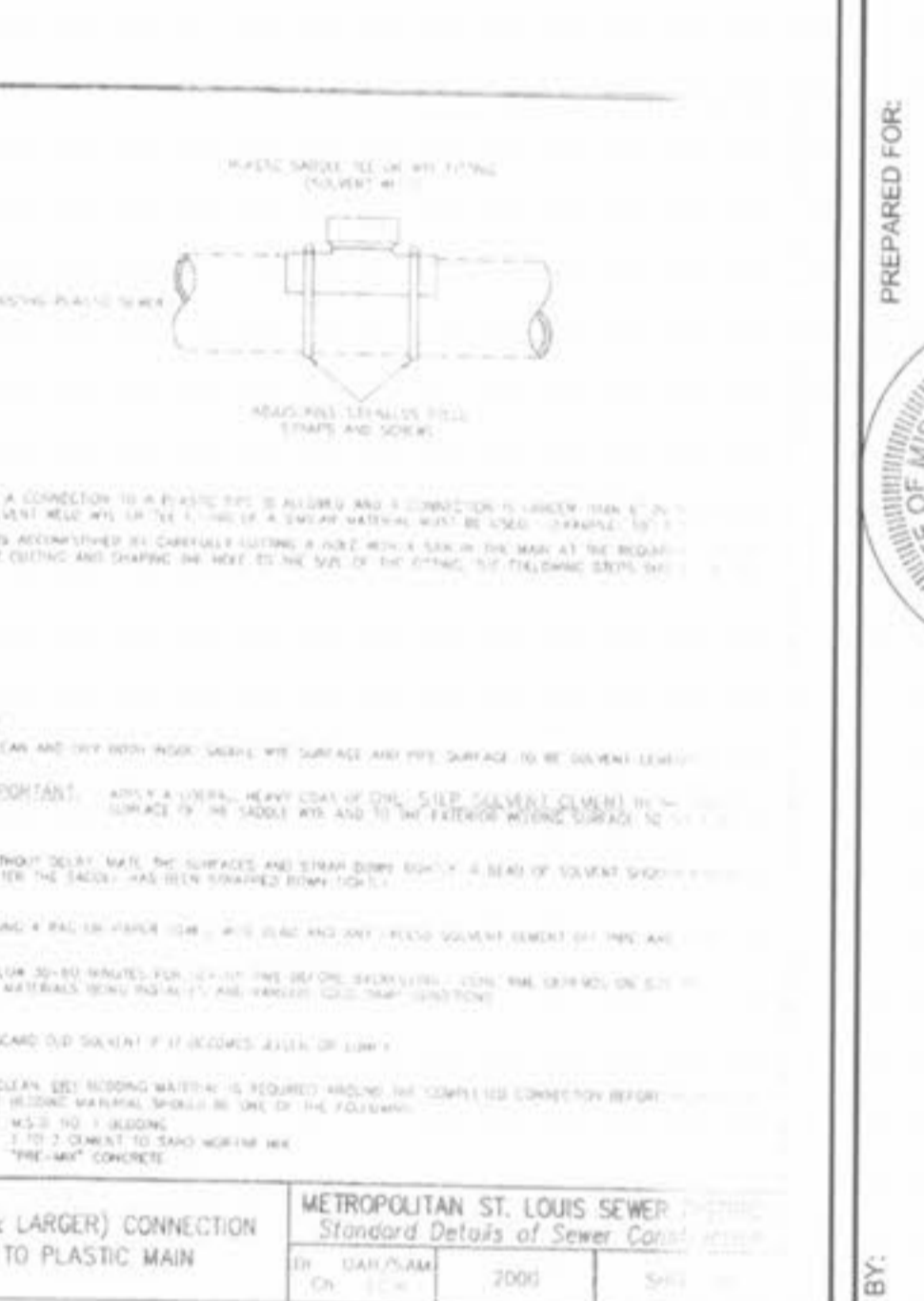
HOUSE CONNECTION TO EXISTING TEE OR WYE
 METROPOLITAN ST. LOUIS SEWER DISTRICT
 Standard Details of Sewer Construction
 01 10/15/AM 2000 SHEET 63



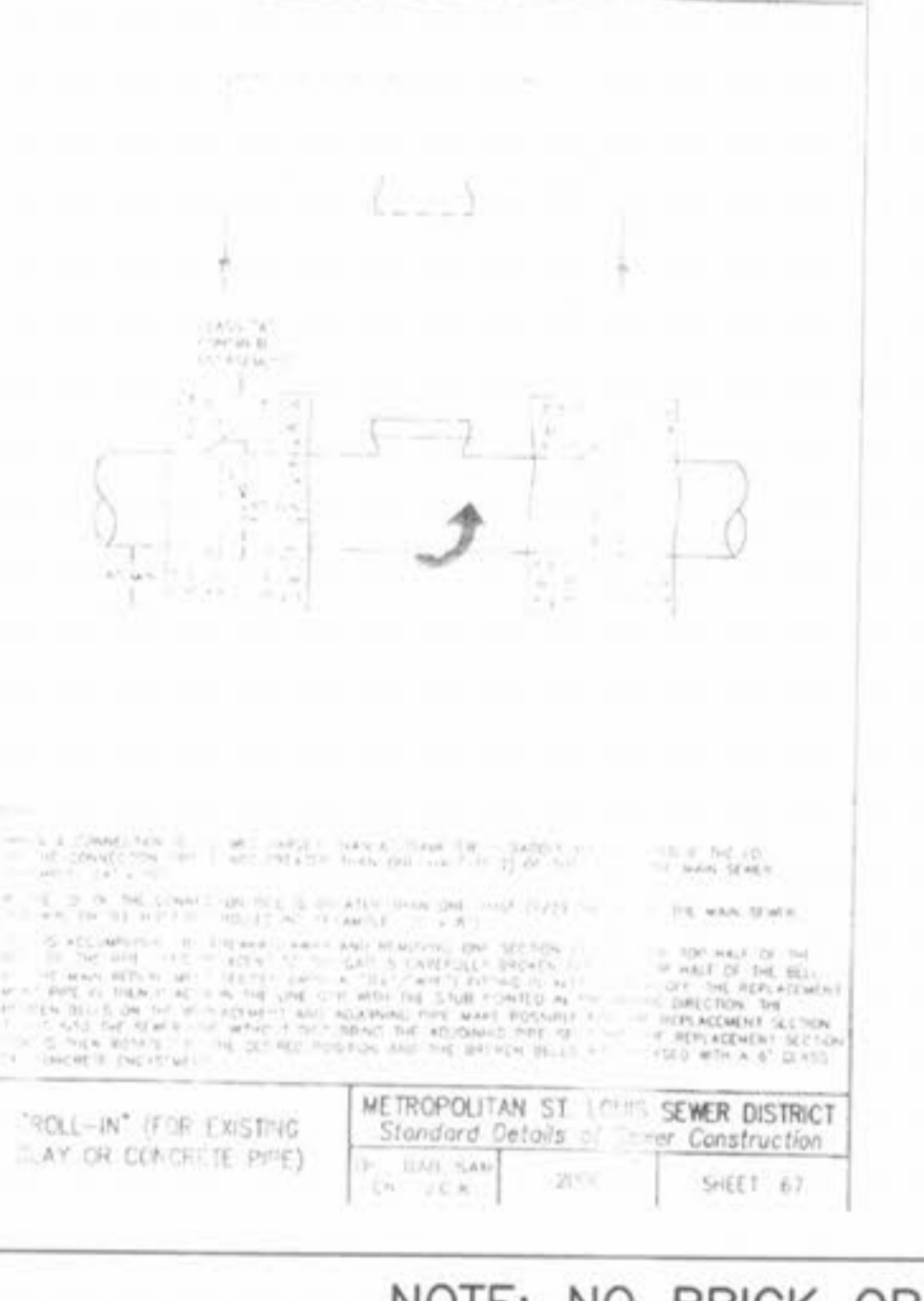
MACHINE TAP
 METROPOLITAN ST. LOUIS SEWER DISTRICT
 Standard Details of Sewer Construction
 01 10/15/AM 2000 SHEET 64



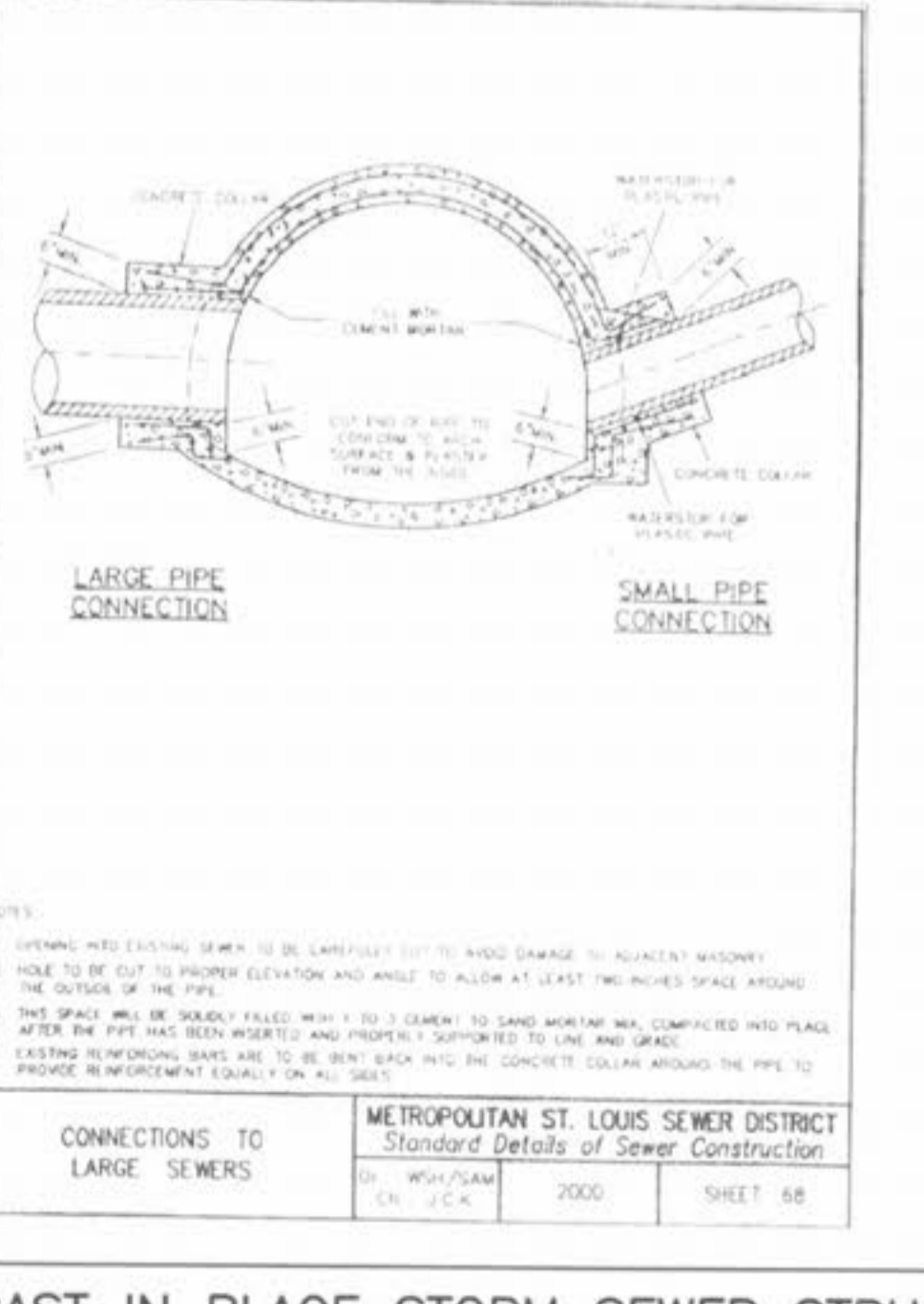
HOUSE CONNECTIONS ALLOWED BY TEE SADDLE
 METROPOLITAN ST. LOUIS SEWER DISTRICT
 Standard Details of Sewer Construction
 01 10/15/AM 2000 SHEET 65



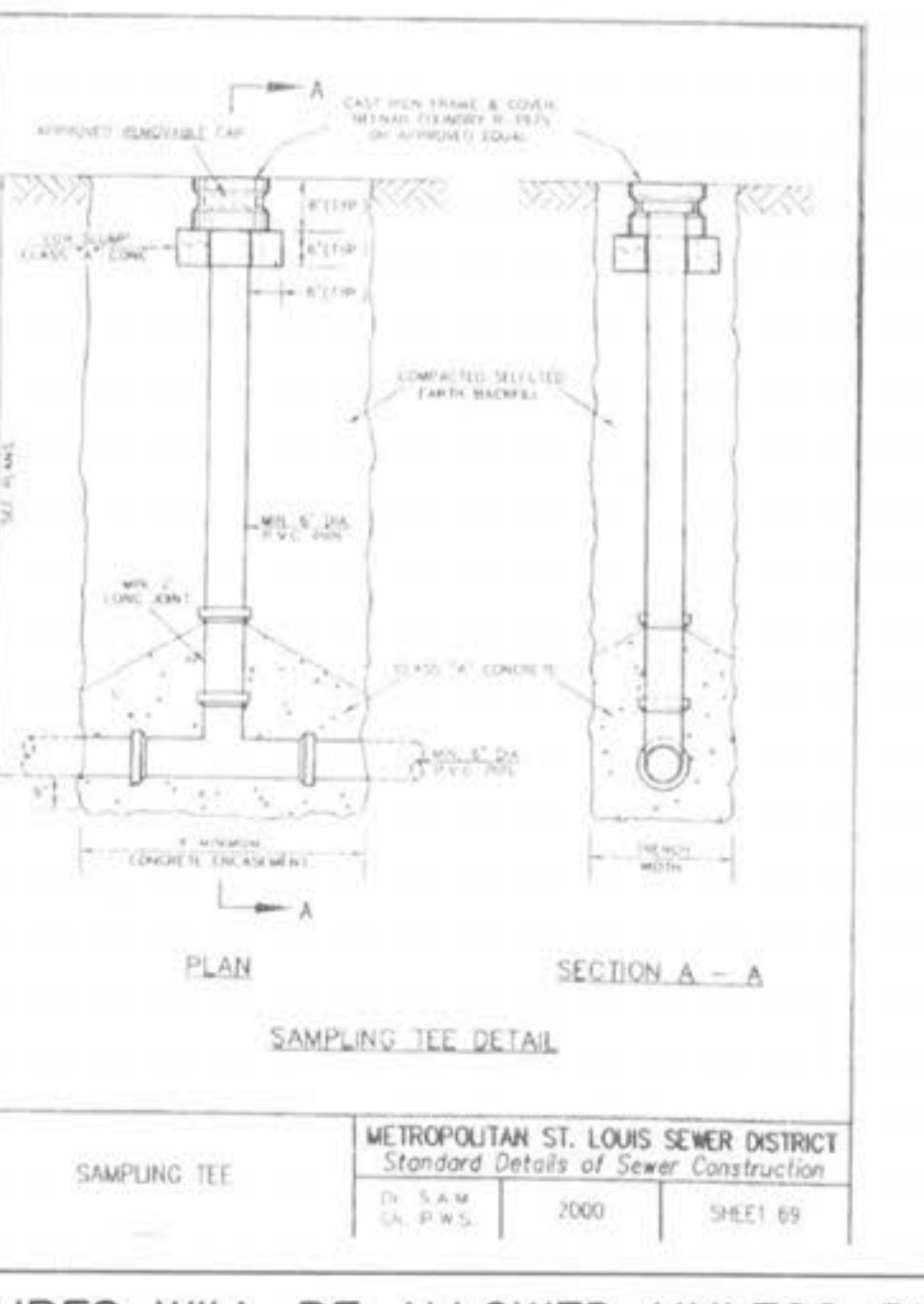
8" (& LARGER) CONNECTION TO PLASTIC MAIN
 METROPOLITAN ST. LOUIS SEWER DISTRICT
 Standard Details of Sewer Construction
 01 10/15/AM 2000 SHEET 66



"ROLL-IN" FOR EXISTING LAY ON CONCRETE PIPE
 METROPOLITAN ST. LOUIS SEWER DISTRICT
 Standard Details of Sewer Construction
 01 10/15/AM 2000 SHEET 67



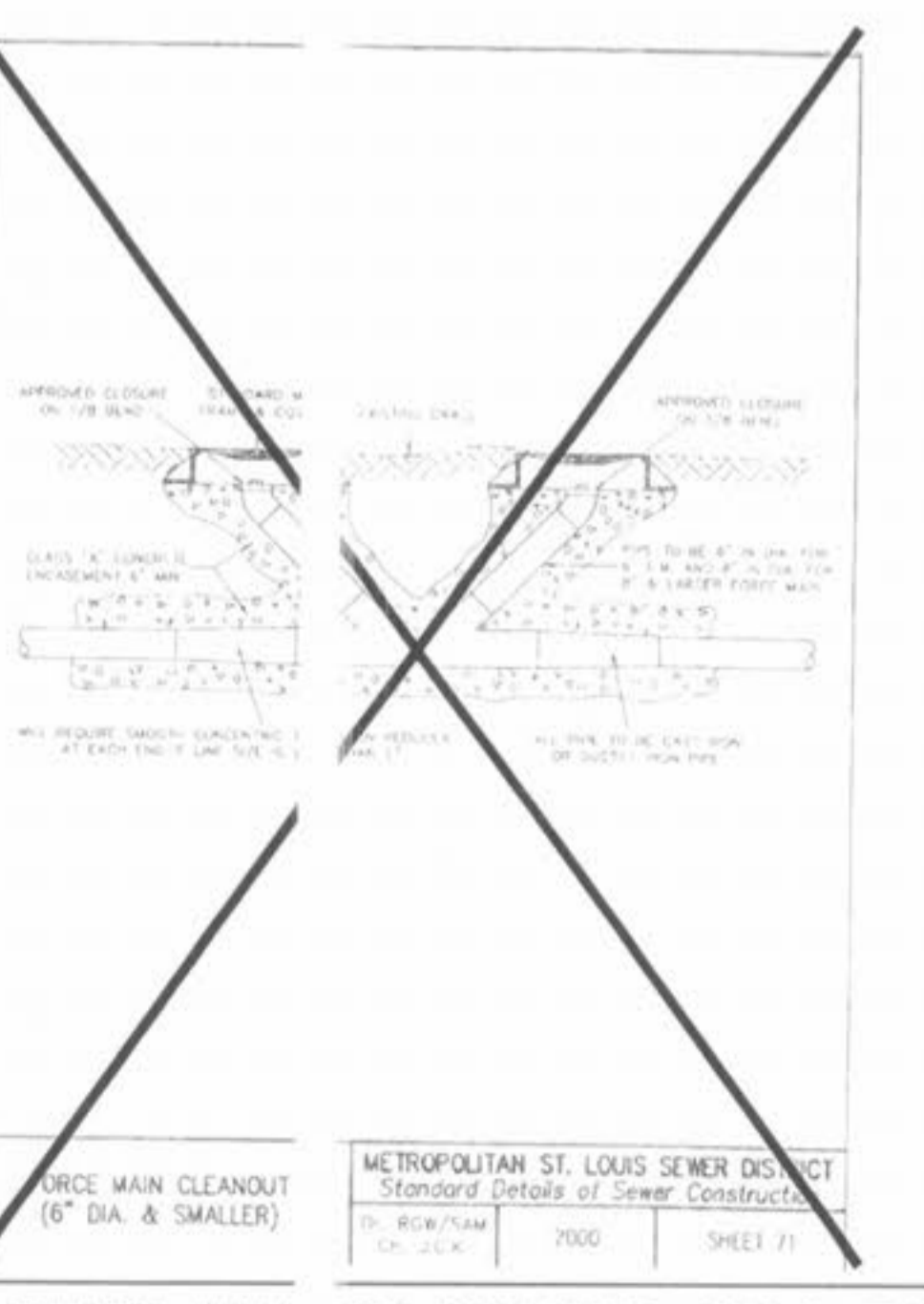
CONNECTIONS TO LARGE SEWERS
 METROPOLITAN ST. LOUIS SEWER DISTRICT
 Standard Details of Sewer Construction
 01 10/15/AM 2000 SHEET 68



SAMPLING TEE
 METROPOLITAN ST. LOUIS SEWER DISTRICT
 Standard Details of Sewer Construction
 01 10/15/AM 2000 SHEET 69



SIGNS
 METROPOLITAN ST. LOUIS SEWER DISTRICT
 Standard Details of Sewer Construction
 01 10/15/AM 2000 SHEET 70



FORCE MAIN CLEANOUT (6" DIA. & SMALLER)
 METROPOLITAN ST. LOUIS SEWER DISTRICT
 Standard Details of Sewer Construction
 01 10/15/AM 2000 SHEET 71

ISSUE REMARKS/DATE

1	REV PER QUICKEIT CREEK SANI. DISTRICT 9/20/05
2	REV PER CITY AND WATER DISTRICT COMMENTS 9/28/05
3	REV PER QUICKEIT CREEK SANI. DISTRICT 10/17/05
4	REV PER WATER DISTRICT NO. 2 11/14/05
5	REV PER CITY OF OFFALON 12/02/05
6	REV PER CITY OF OFFALON 1/9/2006

PREPARED FOR:
McBride & Son Homes
 Land Development, Inc.
 #1 McBride & Son Center Drive
 Chesterfield, Missouri 63005
 (636) 537-2000



PREPARED BY:
THE STERLING CO.
 ENGINEERS & SURVEYORS
 5845 NEW HAVEN ROAD
 ST. LOUIS, MISSOURI 63120
 (314) 487-0440 FAX 487-8944
 E-Mail: Sterling@sterling-eng-sur.com

PROJECT: **FOX HAVEN ADDITION**

DRAWN: _____ DESIGNED: _____ CHECKED: _____

SHEET TITLE: **MSD CONSTRUCTION DETAILS**

NO.	04	05	084
M.S.D.	SHEET		
P#	CD6		
DIGITAL FILE LOCATOR	SEWER-STERLING-2		
DATE	1/10/06		

NOTE: NO BRICK OR CAST IN PLACE STORM SEWER STRUCTURES WILL BE ALLOWED UNLESS PIPE IS 48" OR GREATER, THEN CAST IN PLACE WILL BE ALLOWED ON A CASE BY CASE BASIS.

BASE MAP