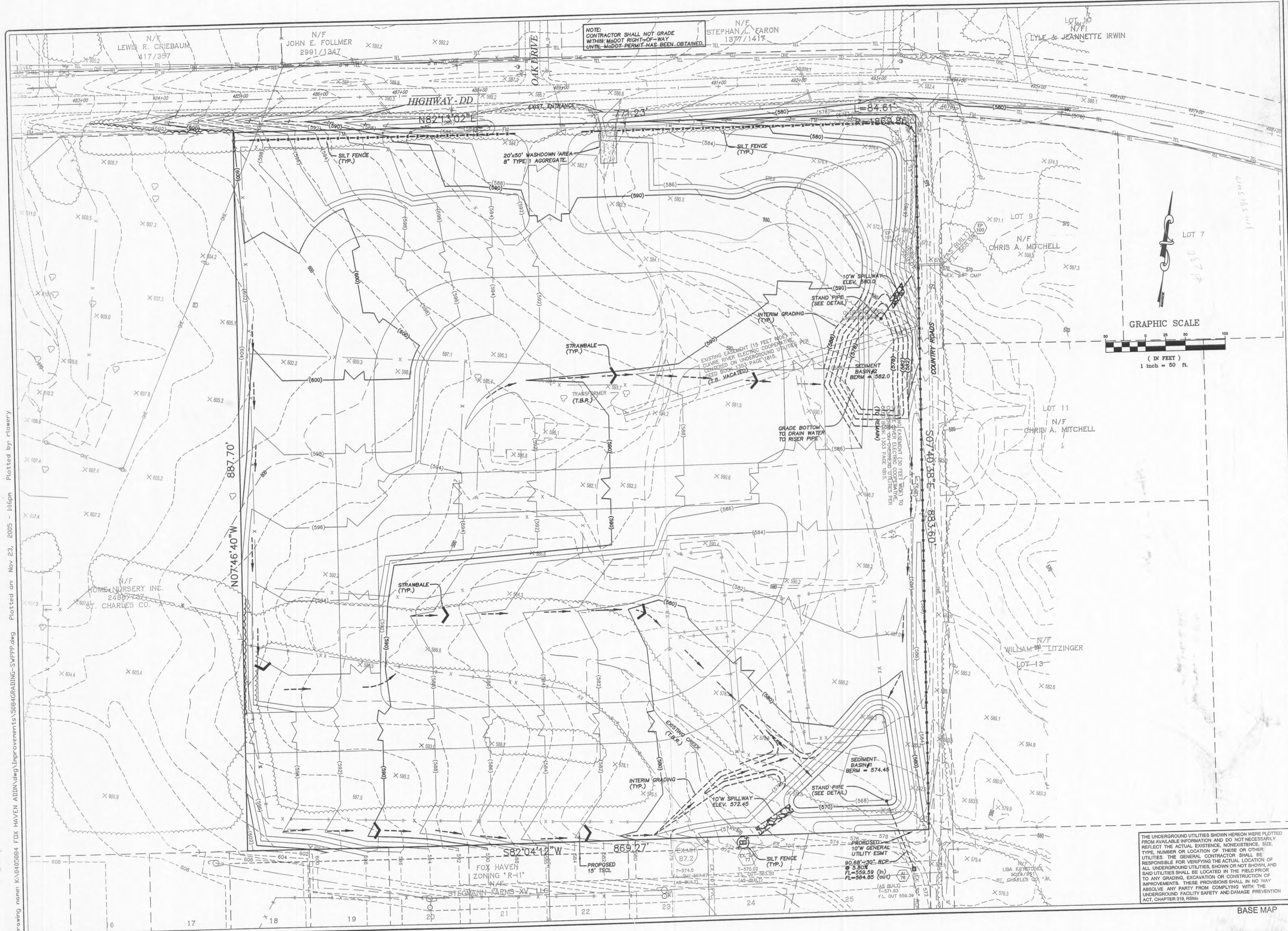
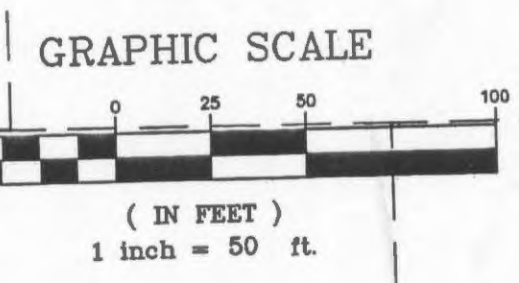


Drawing name: K:\0405084_FDX_HAVEN_ADDN.dwg Improvements\5084\GRADING-SWPPP.dwg Plotted on: Nov 23, 2005 - 10:50pm Plotted by: rlwery



NOTE: CONTRACTOR SHALL NOT GRADE WITHIN MOOT RIGHT-OF-WAY UNTIL MOOT PERMIT HAS BEEN OBTAINED.



THE UNDERGROUND UTILITIES SHOWN HEREON WERE PLOTTED FROM AVAILABLE INFORMATION AND DO NOT NECESSARILY REFLECT THE ACTUAL EXISTENCE, NONEXISTENCE, SIZE, TYPE, NUMBER OR LOCATION OF THESE OR OTHER UTILITIES. THE GENERAL CONTRACTOR SHALL BE RESPONSIBLE FOR VERIFYING THE ACTUAL LOCATION OF ALL UNDERGROUND UTILITIES, SHOWN OR NOT SHOWN, AND SAID UTILITIES SHALL BE LOCATED IN THE FIELD PRIOR TO ANY GRADING, EXCAVATION OR CONSTRUCTION OF IMPROVEMENTS. THESE PROVISIONS SHALL IN NO WAY ABSOLVE ANY PARTY FROM COMPLYING WITH THE UNDERGROUND FACILITY SAFETY AND DAMAGE PREVENTION ACT, CHAPTER 319, RSMo.

ISSUE	REVISION	DATE
2	REVISION PER CITY OF OFALLON, 11-23-05	

PREPARED FOR:
McBride & Son Homes
 Land Development, Inc.
 #1 McBride & Son Center Drive
 Chesterfield, MO. 63005
 636 537-2000



PREPARED BY:
THE STERLING CO.
 ENGINEERS & SURVEYORS
 5955 NEW BAUMGARTNER ROAD
 ST. LOUIS, MISSOURI 63129
 (314) 487-0440 FAX: 487-4684
 E-Mail: Sterling@sterling-eng-survey.com

DRAWN:	DESIGNED:	CHECKED:
FOX HAVEN ADDITION		
PROJECT:	GRADING PLAN	
SHEET TITLE:	GRADING PLAN	

NO.	04	05	084
M.S.D.	SHEET		
P#	2		
DIGITAL FILE LOCATION	OF 4		

BASE MAP