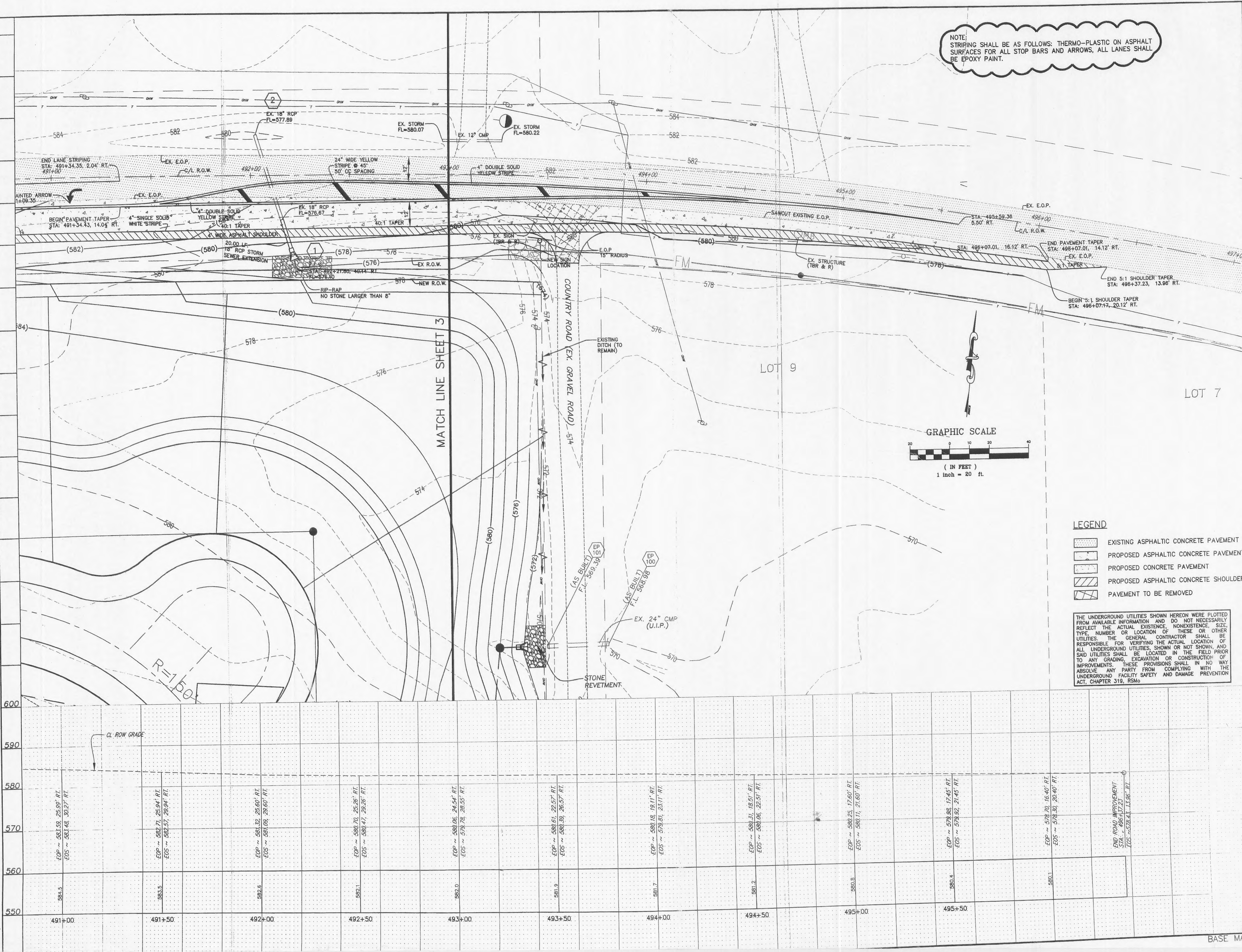
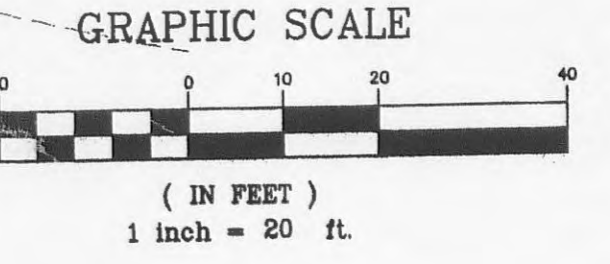


Drawing name: K:\0405084 FOX HAVEN ADDN.dwg \improvements\5084RDADIMP.dwg Plotted on: Dec 29, 2005 - 10:28am Plotted by: wtroung



NOTE:  
STRIPING SHALL BE AS FOLLOWS: THERMO-PLASTIC ON ASPHALT SURFACES FOR ALL STOP BARS AND ARROWS, ALL LANES SHALL BE EPOXY PAINT.

MATCH LINE SHEET 3



- LEGEND**
- EXISTING ASPHALTIC CONCRETE PAVEMENT
  - PROPOSED ASPHALTIC CONCRETE PAVEMENT
  - PROPOSED CONCRETE PAVEMENT
  - PROPOSED ASPHALTIC CONCRETE SHOULDER
  - PAVEMENT TO BE REMOVED

THE UNDERGROUND UTILITIES SHOWN HEREON WERE PLOTTED FROM AVAILABLE INFORMATION AND DO NOT NECESSARILY REFLECT THE ACTUAL EXISTENCE, NONEXISTENCE, SIZE, TYPE, NUMBER OR LOCATION OF THESE OR OTHER UTILITIES. THE GENERAL CONTRACTOR SHALL BE RESPONSIBLE FOR VERIFYING THE ACTUAL LOCATION OF ALL UNDERGROUND UTILITIES, SHOWN OR NOT SHOWN, AND SAID UTILITIES SHALL BE LOCATED IN THE FIELD PRIOR TO ANY GRADING, EXCAVATION OR CONSTRUCTION OF IMPROVEMENTS. THESE PROVISIONS SHALL IN NO WAY ABSOLVE ANY PARTY FROM COMPLYING WITH THE UNDERGROUND FACILITY SAFETY AND DAMAGE PREVENTION ACT, CHAPTER 319, RSMo

550	491+00	581.5	583.5	582.5	582.1	582.0	581.9	581.7	581.2	580.8	580.4	580.1	580.1
		EOP ~ 581.59, 25.09' RT. EOS ~ 581.48, 30.27' RT.	EOP ~ 582.71, 25.94' RT. EOS ~ 582.57, 29.94' RT.	EOP ~ 581.32, 25.60' RT. EOS ~ 581.09, 29.60' RT.	EOP ~ 580.70, 25.26' RT. EOS ~ 580.47, 29.26' RT.	EOP ~ 580.06, 24.54' RT. EOS ~ 579.78, 29.55' RT.	EOP ~ 580.51, 22.57' RT. EOS ~ 580.39, 26.57' RT.	EOP ~ 580.18, 19.11' RT. EOS ~ 579.81, 23.11' RT.	EOP ~ 580.31, 18.51' RT. EOS ~ 580.06, 22.51' RT.	EOP ~ 580.25, 17.60' RT. EOS ~ 580.11, 21.60' RT.	EOP ~ 579.98, 17.45' RT. EOS ~ 579.92, 21.45' RT.	EOP ~ 579.70, 16.40' RT. EOS ~ 579.30, 20.40' RT.	EOP ROAD IMPROVEMENT STA. 496+17.23 EOS ~ 578.43, 13.96' RT.
555	491+50												
560	492+00												
565	492+50												
570	493+00												
575	493+50												
580	494+00												
585	494+50												
590	495+00												
595	495+50												
600													

ISSUE REMARKS/DATE  
 1 MDDOT COMMENTS, 06/23/2005  
 2 MDDOT COMMENTS, 08/16/05  
 3 MDDOT COMMENTS, 11/14/05  
 4 MDDOT COMMENTS, 12/28/05

PREPARED FOR:  
**McBride & Son Homes  
 Land Development, Inc.**  
 #1 McBride & Son Center Drive  
 Chesterfield, Missouri 63005  
 (636) 537-2000

PREPARED BY:  
  
**THE STERLING CO.**  
 ENGINEERS & SURVEYORS  
 5055 NEW BAUMGARTNER ROAD  
 ST. LOUIS, MISSOURI 63129  
 (314)-487-0440 FAX 487-8944  
 E-Mail: Sterling@sterling-eng-sur.com

DRAWN: [ ] DESIGNED: [ ] CHECKED: [ ]

PROJECT: **FOX HAVEN ADDITION**  
 SHEET TITLE: ROAD IMPROVEMENTS

NO. 04 05 084  
 M.S.D. SHEET 4 OF 7  
 DIGITAL FILE LOCATION: SERVICES\5084-2\5084RCP.dwg

BASE MAP