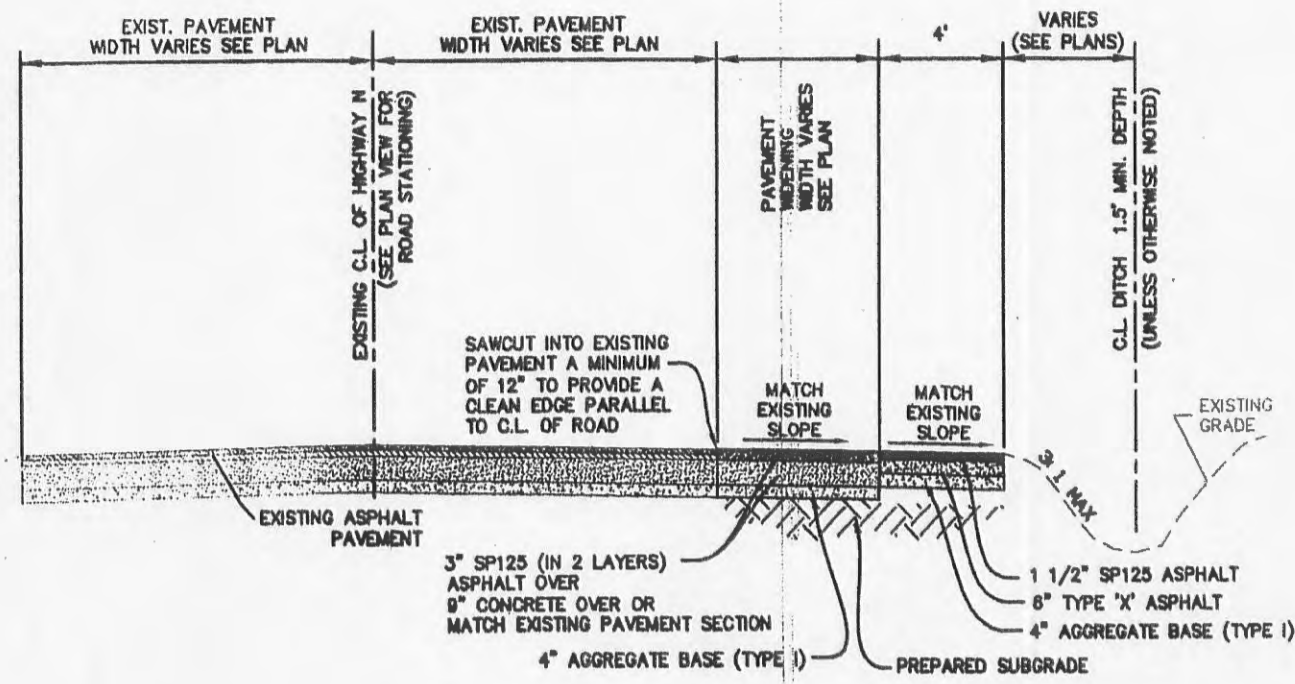
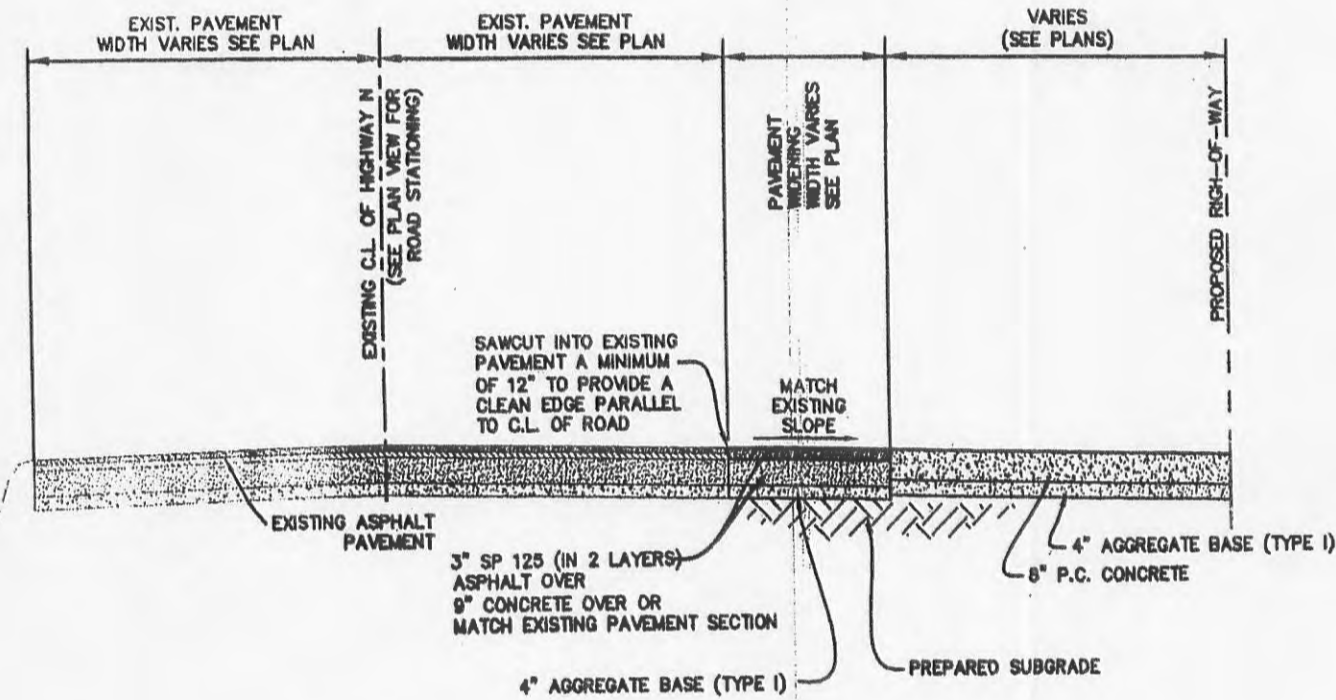


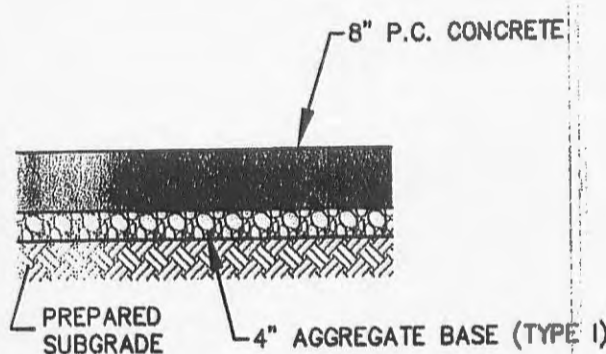
NOTE:
CONTRACTOR SHALL VERIFY EXISTING PAVEMENT SECTION AND
MAKE ADJUSTMENTS AS NECESSARY TO MATCH EXISTING SECTION
WITH THE PROPOSED PAVEMENT WIDENING.



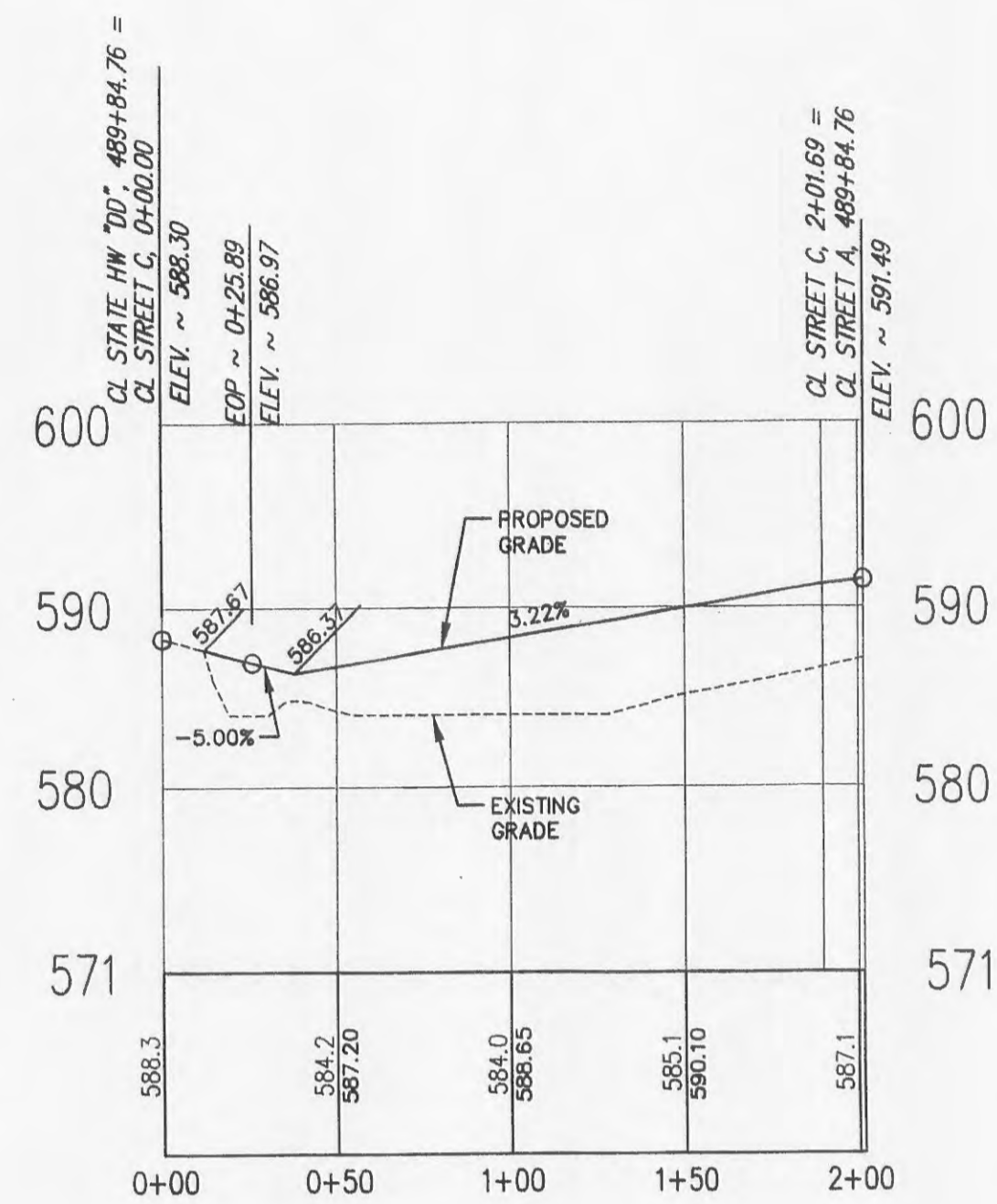
TYPICAL SECTION
STA 483+94.29 THRU STA 487+84.00 &
STA 489+86.46 THRU STA 495+54.17
WIDENING EXISTING ASPHALT PAVEMENT
WITH SHOULDER
NOT TO SCALE



TYPICAL SECTION AT ENTRANCE
STA 487+84.00 THRU STA 489+86.46
NOT TO SCALE

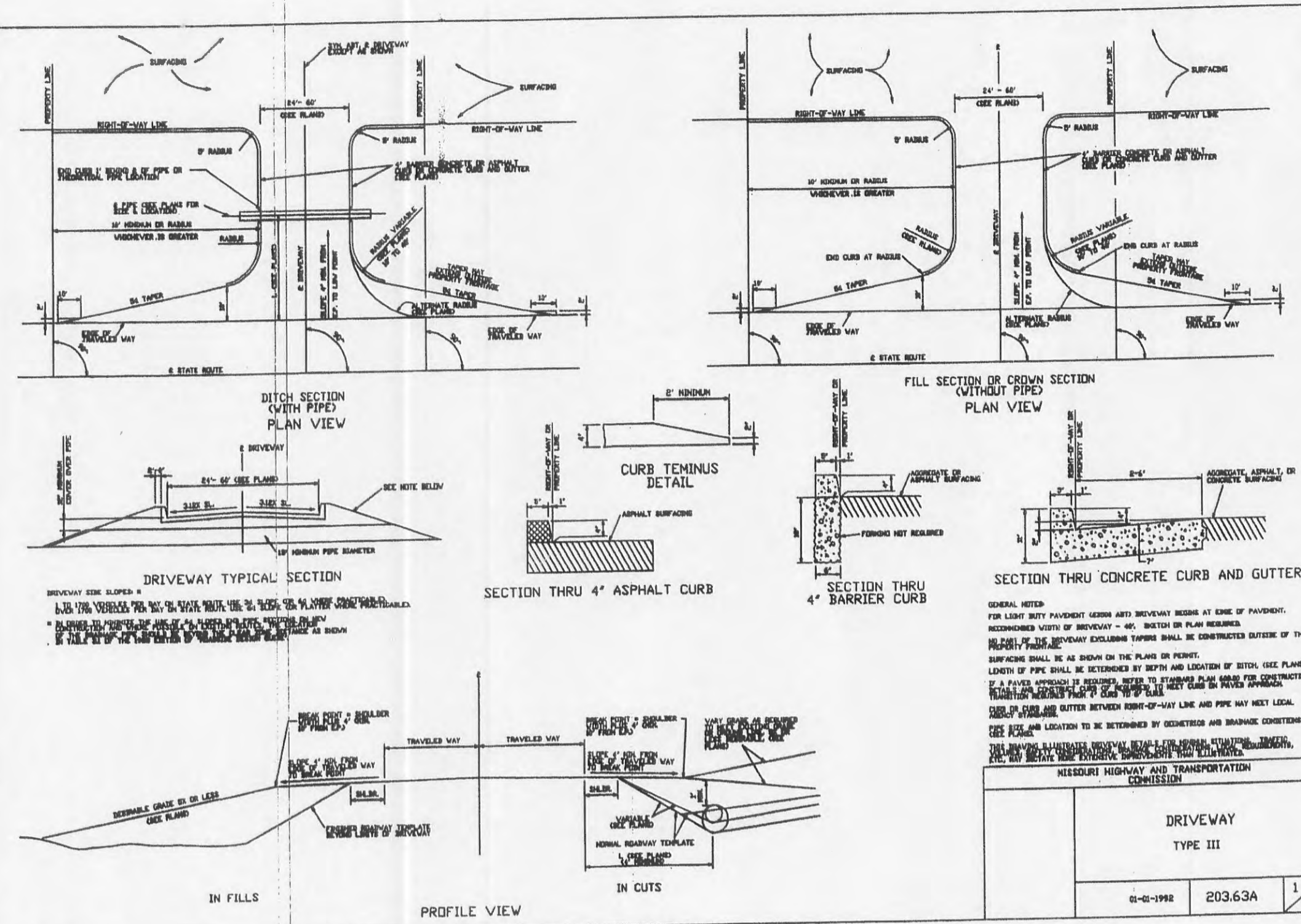


TYPICAL PAVEMENT SECTION - ENTRANCE
(NOT TO SCALE)

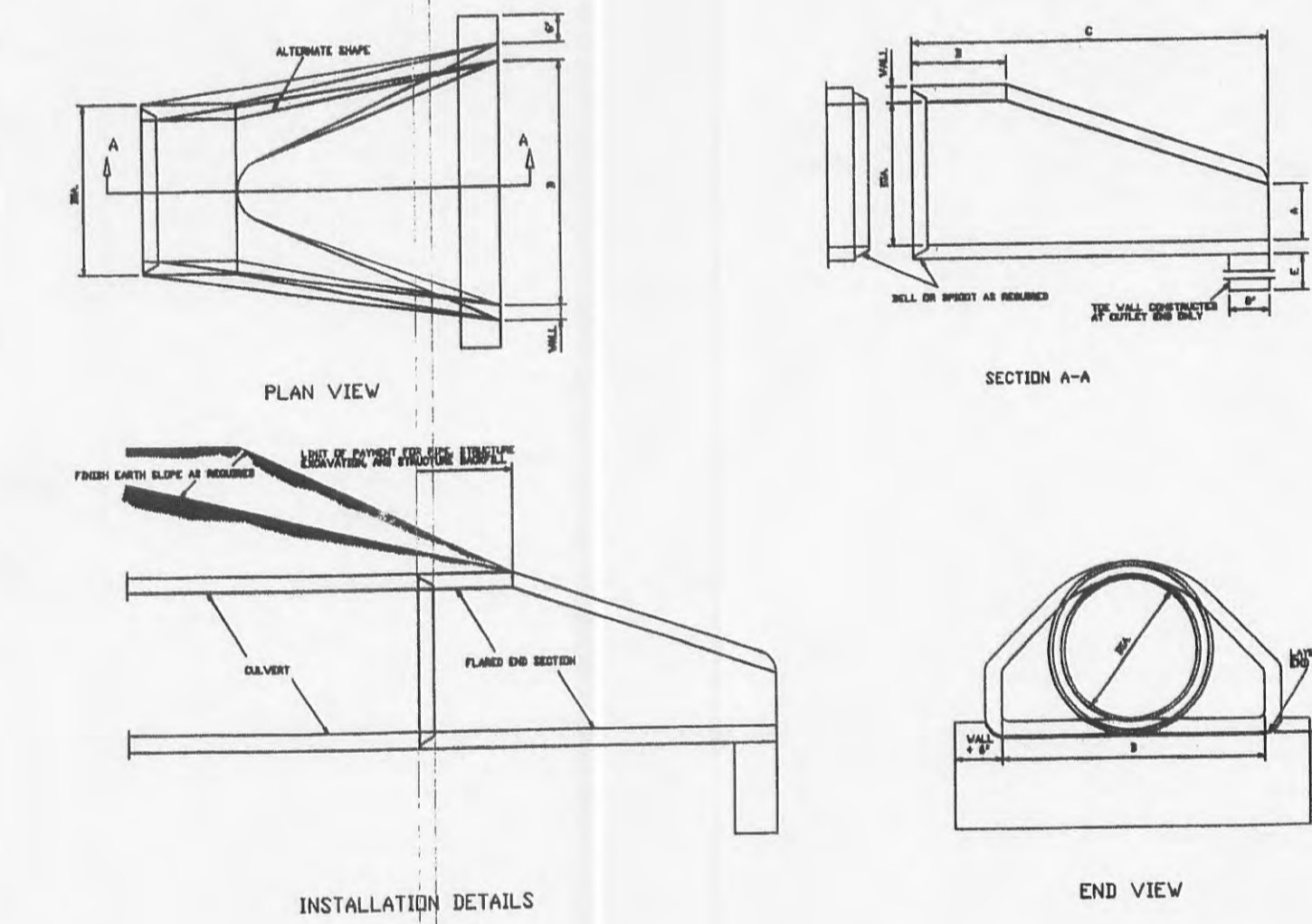


STREET - C

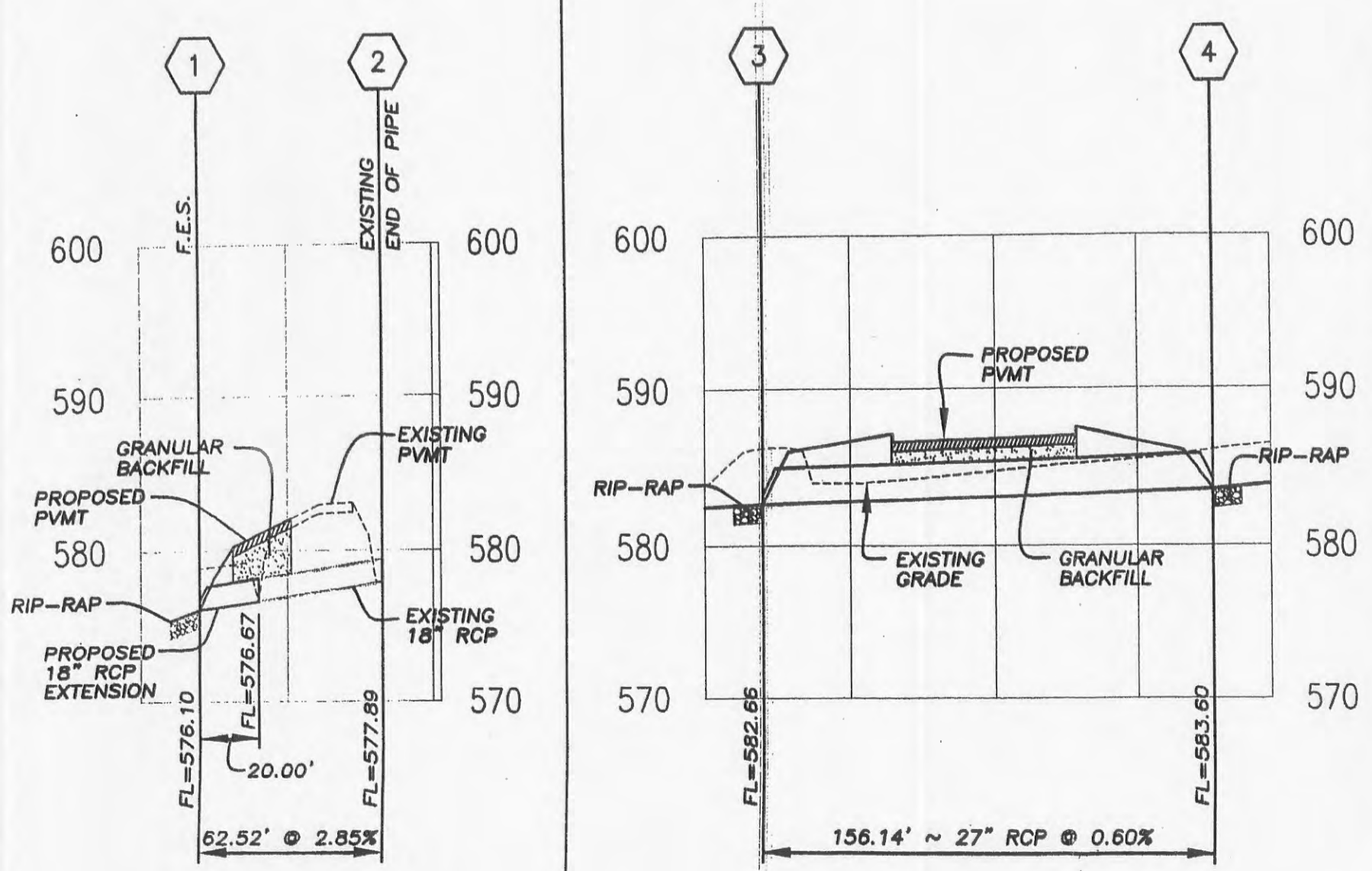
VERTICAL SCALE: 1"=10'
HORIZONTAL SCALE: 1"=50'



REINFORCEMENT		CONCRETE	
NO.	DESCRIPTION	THICKNESS	STRENGTH
1	NO. 4 @ 12\"/>		



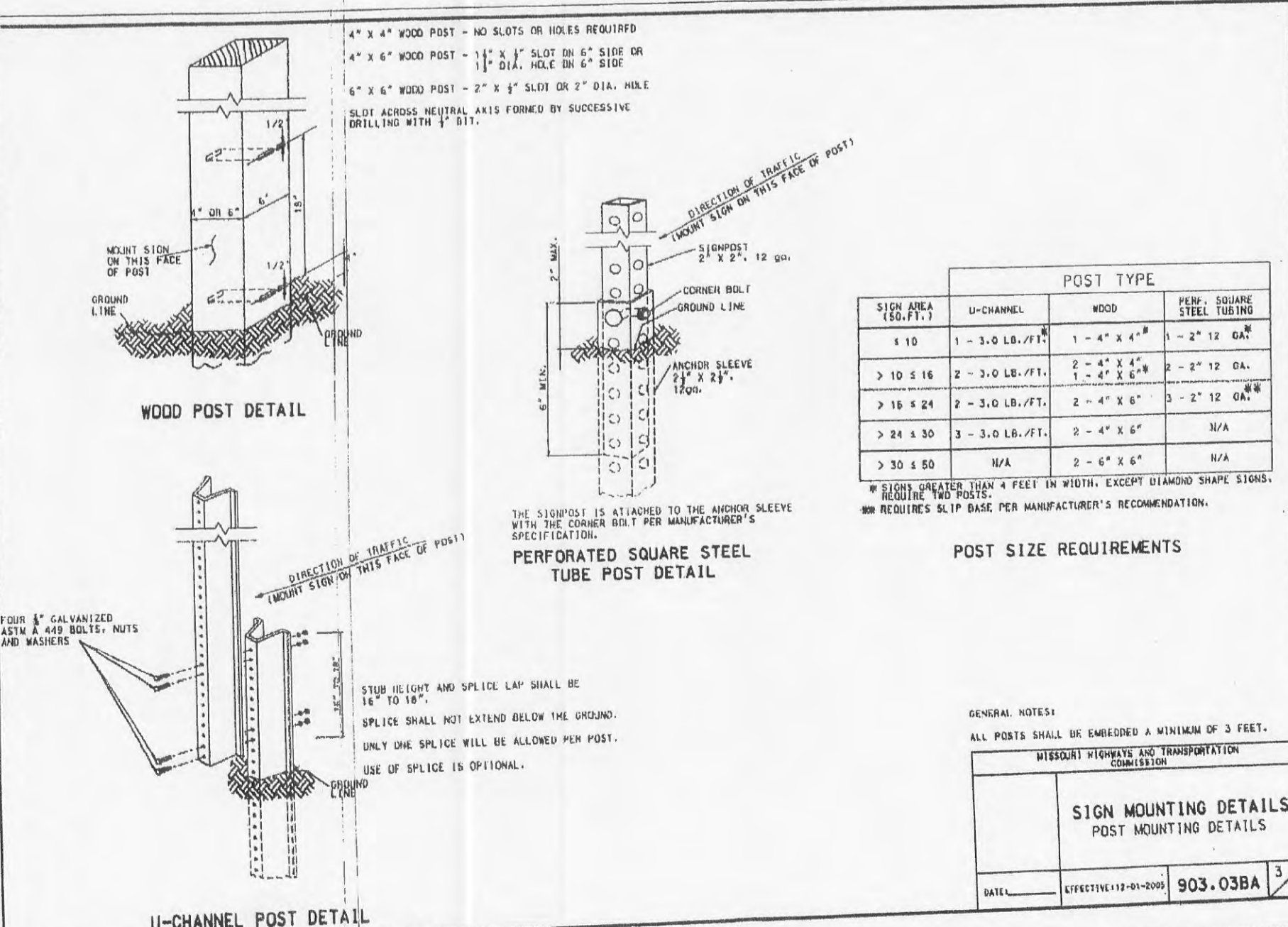
DIMENSIONS	
NO.	DESCRIPTION
1	MANHOLE DIAMETER
2	PIPE DIAMETER
3	PIPE LENGTH
4	PIPE WEIGHT
5	PIPE STRENGTH
6	PIPE MODULUS OF ELASTICITY
7	PIPE COEFFICIENT OF FRICTION
8	PIPE PERMEABILITY
9	PIPE TENSILE STRENGTH
10	PIPE COMPRESSIVE STRENGTH
11	PIPE TORSION STRENGTH
12	PIPE BENDING STRENGTH
13	PIPE CRACKING STRENGTH
14	PIPE SPLITTING STRENGTH
15	PIPE FLAT CRACKING STRENGTH
16	PIPE POINT LOAD STRENGTH
17	PIPE IMPACT STRENGTH
18	PIPE FLEXURE STRENGTH
19	PIPE TENSILE STRENGTH
20	PIPE COMPRESSIVE STRENGTH
21	PIPE TORSION STRENGTH
22	PIPE BENDING STRENGTH
23	PIPE CRACKING STRENGTH
24	PIPE SPLITTING STRENGTH
25	PIPE FLAT CRACKING STRENGTH
26	PIPE POINT LOAD STRENGTH
27	PIPE IMPACT STRENGTH
28	PIPE FLEXURE STRENGTH
29	PIPE TENSILE STRENGTH
30	PIPE COMPRESSIVE STRENGTH
31	PIPE TORSION STRENGTH
32	PIPE BENDING STRENGTH
33	PIPE CRACKING STRENGTH
34	PIPE SPLITTING STRENGTH
35	PIPE FLAT CRACKING STRENGTH
36	PIPE POINT LOAD STRENGTH
37	PIPE IMPACT STRENGTH
38	PIPE FLEXURE STRENGTH
39	PIPE TENSILE STRENGTH
40	PIPE COMPRESSIVE STRENGTH
41	PIPE TORSION STRENGTH
42	PIPE BENDING STRENGTH
43	PIPE CRACKING STRENGTH
44	PIPE SPLITTING STRENGTH
45	PIPE FLAT CRACKING STRENGTH
46	PIPE POINT LOAD STRENGTH
47	PIPE IMPACT STRENGTH
48	PIPE FLEXURE STRENGTH
49	PIPE TENSILE STRENGTH
50	PIPE COMPRESSIVE STRENGTH
51	PIPE TORSION STRENGTH
52	PIPE BENDING STRENGTH
53	PIPE CRACKING STRENGTH
54	PIPE SPLITTING STRENGTH
55	PIPE FLAT CRACKING STRENGTH
56	PIPE POINT LOAD STRENGTH
57	PIPE IMPACT STRENGTH
58	PIPE FLEXURE STRENGTH
59	PIPE TENSILE STRENGTH
60	PIPE COMPRESSIVE STRENGTH
61	PIPE TORSION STRENGTH
62	PIPE BENDING STRENGTH
63	PIPE CRACKING STRENGTH
64	PIPE SPLITTING STRENGTH
65	PIPE FLAT CRACKING STRENGTH
66	PIPE POINT LOAD STRENGTH
67	PIPE IMPACT STRENGTH
68	PIPE FLEXURE STRENGTH
69	PIPE TENSILE STRENGTH
70	PIPE COMPRESSIVE STRENGTH
71	PIPE TORSION STRENGTH
72	PIPE BENDING STRENGTH
73	PIPE CRACKING STRENGTH
74	PIPE SPLITTING STRENGTH
75	PIPE FLAT CRACKING STRENGTH
76	PIPE POINT LOAD STRENGTH
77	PIPE IMPACT STRENGTH
78	PIPE FLEXURE STRENGTH
79	PIPE TENSILE STRENGTH
80	PIPE COMPRESSIVE STRENGTH
81	PIPE TORSION STRENGTH
82	PIPE BENDING STRENGTH
83	PIPE CRACKING STRENGTH
84	PIPE SPLITTING STRENGTH
85	PIPE FLAT CRACKING STRENGTH
86	PIPE POINT LOAD STRENGTH
87	PIPE IMPACT STRENGTH
88	PIPE FLEXURE STRENGTH
89	PIPE TENSILE STRENGTH
90	PIPE COMPRESSIVE STRENGTH
91	PIPE TORSION STRENGTH
92	PIPE BENDING STRENGTH
93	PIPE CRACKING STRENGTH
94	PIPE SPLITTING STRENGTH
95	PIPE FLAT CRACKING STRENGTH
96	PIPE POINT LOAD STRENGTH
97	PIPE IMPACT STRENGTH
98	PIPE FLEXURE STRENGTH
99	PIPE TENSILE STRENGTH
100	PIPE COMPRESSIVE STRENGTH



STORM SEWER 1-2
VERTICAL SCALE: 1"=10'
HORIZONTAL SCALE: 1"=50'

STORM SEWER 3-4
VERTICAL SCALE: 1"=10'
HORIZONTAL SCALE: 1"=50'

STORM SEWER 5-6
VERTICAL SCALE: 1"=10'
HORIZONTAL SCALE: 1"=50'



SIGN AREA (SQ. FT.)	U-CHANNEL	WOOD	POST TYPE	
			PERFORATED SQUARE STEEL TUBE	WOOD
1-10	1-3.0 LB./FT.	1-4\"/>		

GENERAL NOTES:
ALL POSTS SHALL BE EMBEDDED A MINIMUM OF 3 FEET.
DISCOUNT THROUGH AND TRANSPORTATION COMMISSION

DATE: 08/21/04
PROJECT: 903.03BA

Drawing name: K:\0405084 FOX HAVEN ADDN.dwg\Improvements\5084R04DIMP.dwg Plotted on: Dec 28, 2005 - 3:42pm Plotted by: w:troung

ISSUE	REMARKS/DATE
1	MADOT COMMENTS, 06/23/2005
2	MADOT COMMENTS, 08/16/05
3	MADOT COMMENTS, 11/14/05
4	MADOT COMMENTS, 12/28/05

PREPARED FOR:
McBride & Son Homes
Land Development, Inc.
#1 McBride & Son Center Drive
Chesterfield, Missouri 63005
(636) 637-2000



PREPARED BY:
THE STERLING CO.
ENGINEERS & SURVEYORS
5055 NEW BAUMGARTNER ROAD
ST. LOUIS, MISSOURI 63129
(314) 487-0440 FAX 487-8944
E-Mail: Sterling@sterling-eng-sur.com

DRAWN: [] DESIGNED: [] CHECKED: []
PROJECT: FOX HAVEN ADDITION
SHEET TITLE: CONSTRUCTION DETAILS

NO.	04	05	084
M.S.D.			
P#			5
DIGITAL FILE LOCATION	K:\0405084 FOX HAVEN ADDN.dwg\Improvements\5084R04DIMP.dwg		
DATE:	08/21/04	PROJECT:	903.03BA

BASE MAP