

**VEGETATION ESTABLISHMENT
For Urban Development Sites
APPENDIX A**

SEEDING RATES:

PERMANENT:

Tall Fescue - 30 lbs./ac.
Smooth Brome - 20 lbs./ac.
Combined - Fescue @ 15 lbs./ac. AND
Brome @ 10 lbs./ac.

TEMPORARY:

Wheat or Rye - 150 lbs./ac. (3.5 lbs. per sq. ft.)
Oats - 120 lbs./ac. (2.75 lbs. per sq. ft.)

SEEDING PERIODS:

Fescue or Brome - March 1 to June 1
August 1 to October 1
Wheat or Rye - March 15 to November 1
Oats - March 15 to September 15

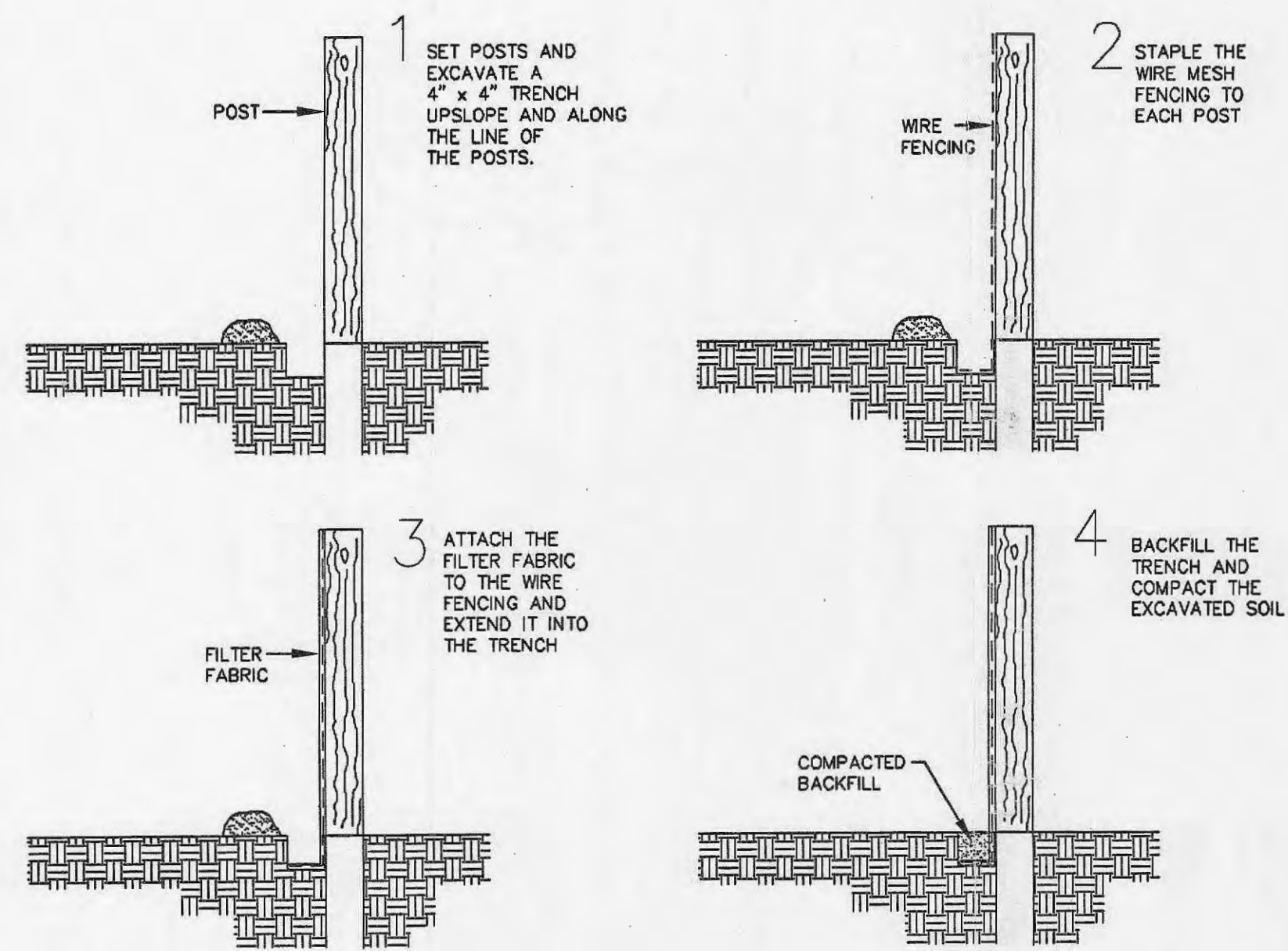
MULCH RATES:

100 lbs. per 1000 sq. ft. (4,356 lbs. per ac.)

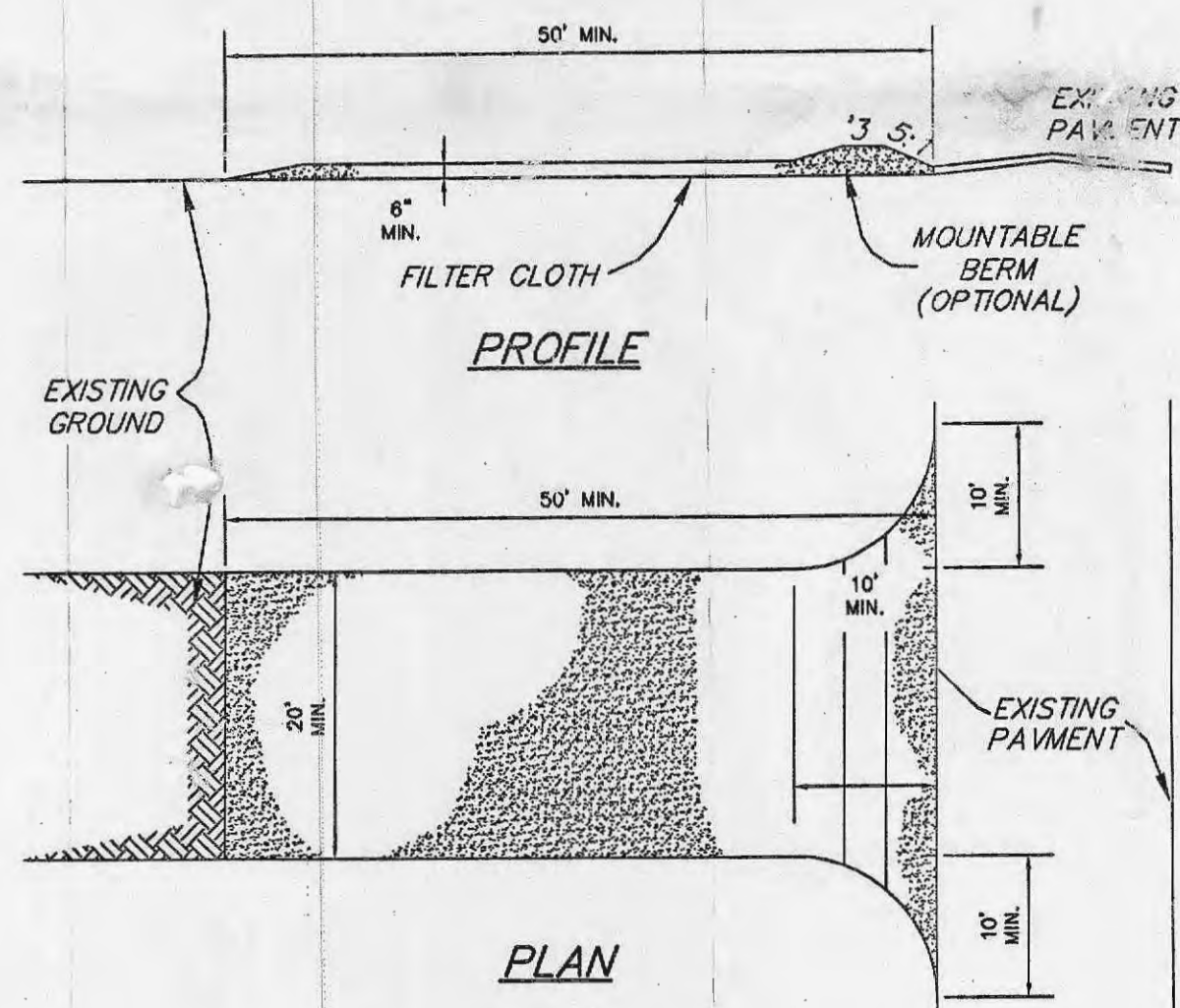
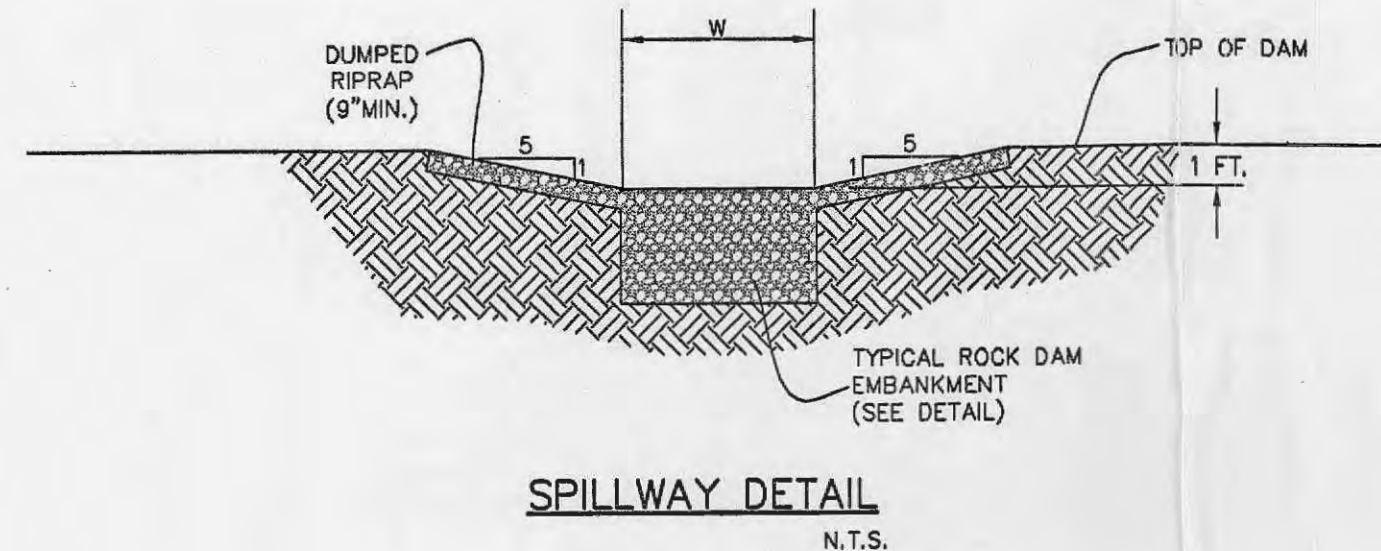
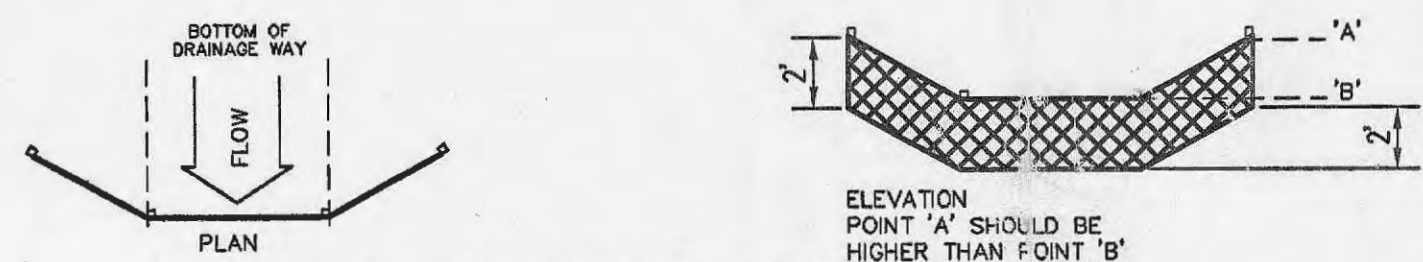
FERTILIZER RATES:

Nitrogen 30 lbs./ac.
Phosphate 30 lbs./ac.
Potassium 30 lbs./ac.
Lime 600 lbs./ac. ENM*

* ENM = effective neutralizing material as per
State evaluation of quarried rock.



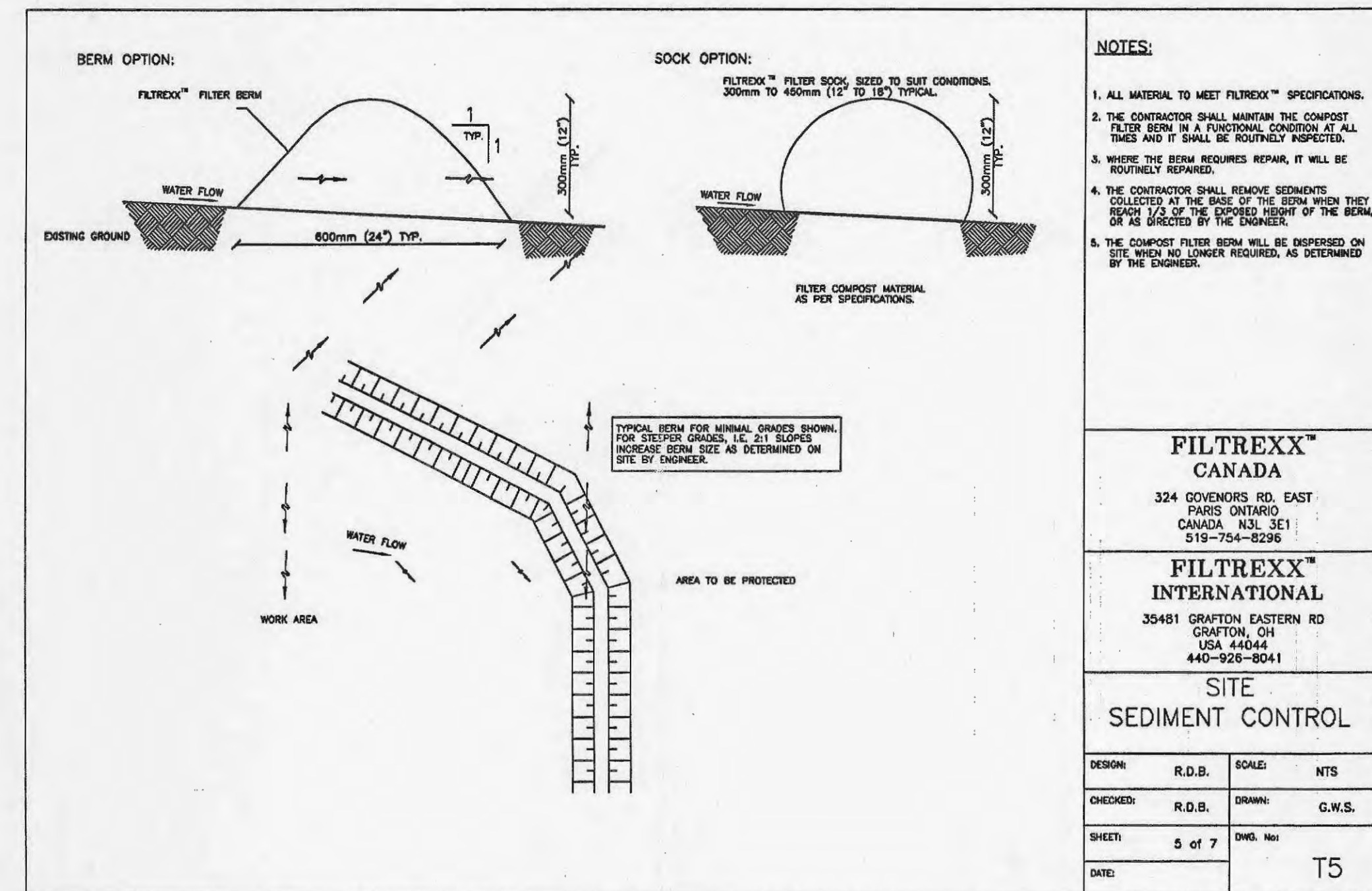
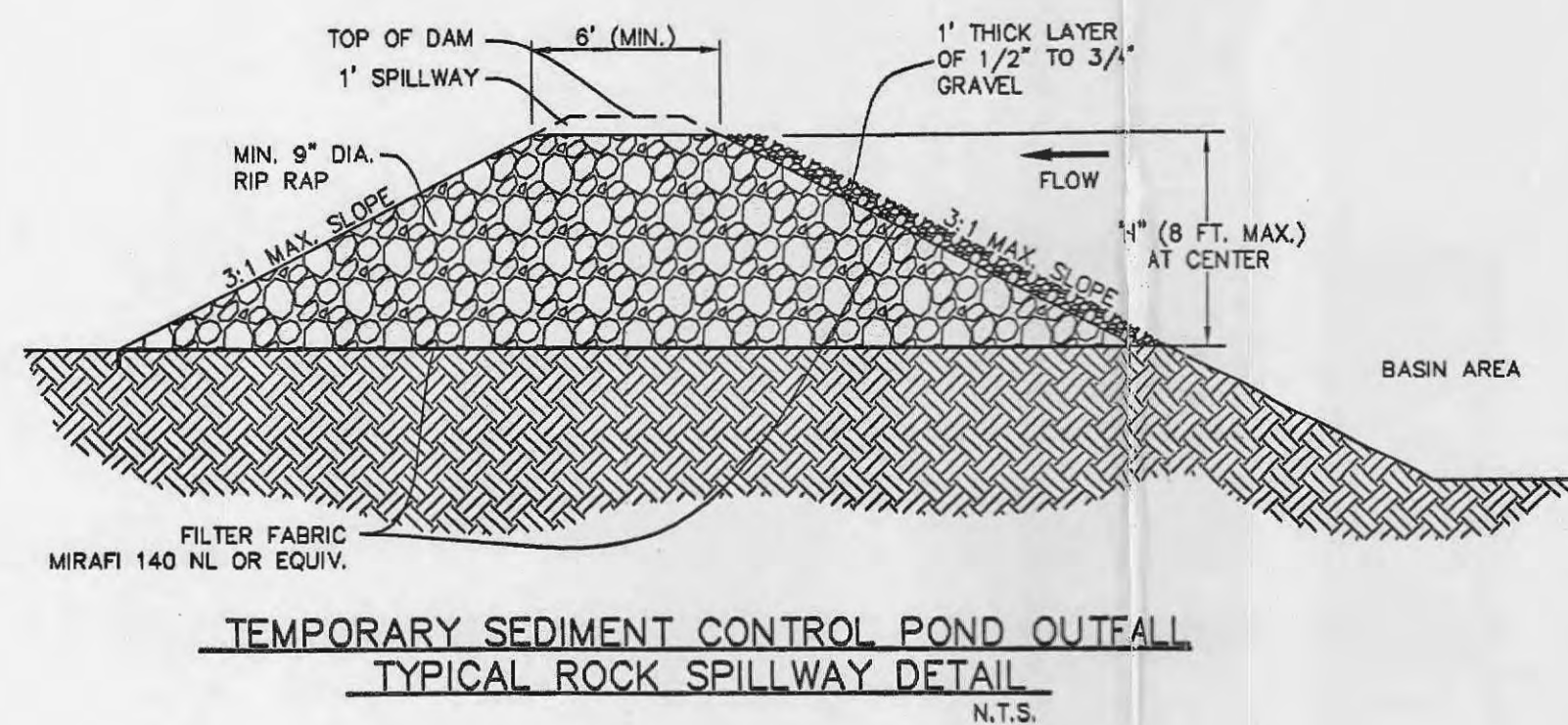
1. FILTER BARRIERS SHALL BE INSPECTED IMMEDIATELY AFTER EACH RAINFALL AND AT LEAST DAILY DURING PROLONGED RAINFALL. ANY REQUIRED REPAIRS SHALL BE MADE IMMEDIATELY.
2. SHOULD THE FABRIC DECOMPOSE OR BECOME INEFFECTIVE PRIOR TO THE END OF THE EXPECTED USABLE LIFE AND THE BARRIER STILL BE NECESSARY, THE FABRIC SHALL BE REPLACED PROMPTLY.
3. SEDIMENT DEPOSITS SHOULD BE REMOVED AFTER EACH STORM EVENT. THEY MUST BE REMOVED WHEN DEPOSITS REACH APPROXIMATELY HALF THE HEIGHT OF THE BARRIER.
4. ANY SEDIMENT DEPOSITS REMAINING IN PLACE AFTER THE SILT FENCE OR FILTER BARRIER IS NO LONGER REQUIRED SHALL BE DRESSED TO CONFORM WITH THE EXISTING GRADE, PREPARED AND SEED.



CONSTRUCTION SPECIFICATIONS

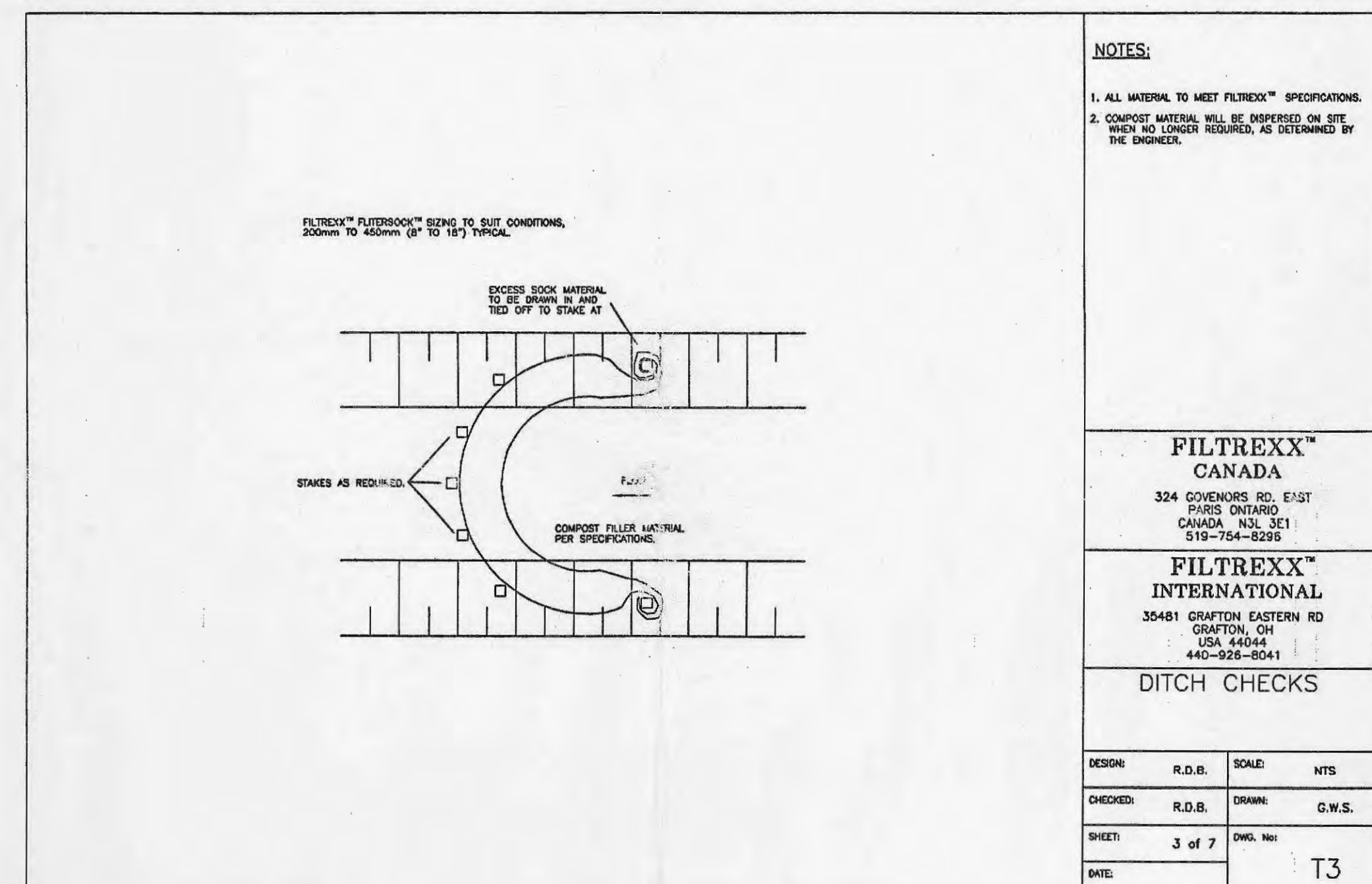
1. Stone Size - Use 2" stone, or reclaimed or recycled concrete equivalent.
2. Length - As required, but not less than 50 feet (except on a single residence lot where a 30 foot minimum length would apply).
3. Thickness - Not less than six (6) inches.
4. Width - Twenty (20) foot minimum, but not less than the full width at points where ingress or egress occurs.
5. Filter Cloth - Will be placed over the entire area prior to placing of stone. Filter will not be required on a single family residence lot.
6. Surface Water - All surface water flowing or diverted toward construction entrances shall be piped across the entrance. If piping is impractical, a mountable berm with 5:1 slopes will be permitted.
7. Maintenance - The entrance shall be maintained in a condition which will prevent tracking or flowing of sediment onto public rights-of-way. This may require periodic top dressing with additional stone as conditions demand and repair and/or cleanout of any measures used to trap sediment. All sediment spilled, dropped, washed or tracked onto public rights-of-way must be removed immediately.
8. Washing - Wheels shall be cleaned to remove sediment prior to entrance onto public rights-of-way. When washing is required, it shall be done on an area stabilized with stone and which drains into an approved sediment trapping device.
9. Periodic inspection and needed maintenance shall be provided after each rain.

**STABILIZED CONSTRUCTION ENTRANCE/WASHDOWN AREA
NOT TO SCALE**



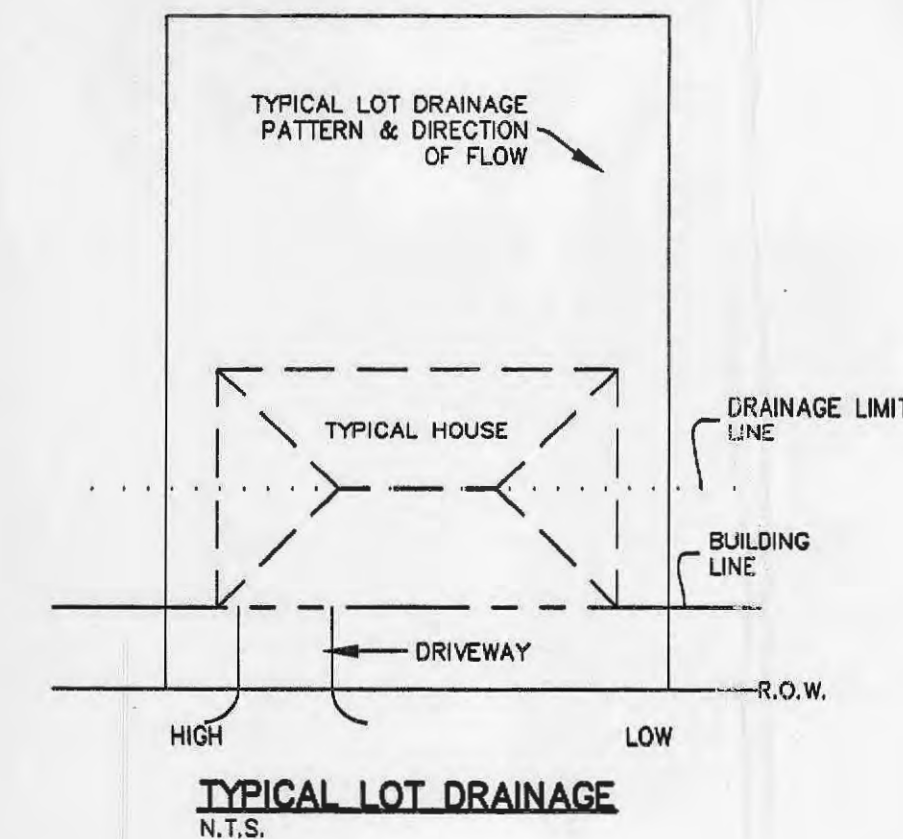
- NOTES:**
1. ALL MATERIAL TO MEET FILTREXX™ SPECIFICATIONS.
 2. THE CONTRACTOR SHALL MAINTAIN THE COMPOST FILTER BERM IN A FUNCTIONAL CONDITION AT ALL TIMES AND IT SHALL BE ROUTINELY REPAIRED.
 3. WHERE THE BERM REQUIRES REPAIR, IT WILL BE ROUTINELY REPAIRED.
 4. THE CONTRACTOR SHALL REMOVE SEDIMENTS COLLECTED AT THE BASE OF THE BERM WHEN THEY ARE NO LONGER REQUIRED, AS DETERMINED BY THE ENGINEER.
 5. THE COMPOST FILTER BERM WILL BE EXPENDED ON SITE WHEN NO LONGER REQUIRED, AS DETERMINED BY THE ENGINEER.

FILTREXX™ CANADA	
324 GOVERNORS RD. EAST PARIS, ONTARIO CANADA, N3L 3E1 519-754-8295	
FILTREXX™ INTERNATIONAL	
35461 CRAFTON EASTERN RD GRAFTON, OH USA 44048 440-928-8041	
SITE SEDIMENT CONTROL	
DESIGN: R.D.B.	SCALE: N.T.S.
CHECKED: R.D.B.	DRAWN: G.W.S.
SHEET: 5 of 7	DWG. NO.:
DATE:	T5



- NOTES:**
1. ALL MATERIAL TO MEET FILTREXX™ SPECIFICATIONS.
 2. COMPOST FILTER BERM WILL BE MAINTAINED IN A FUNCTIONAL CONDITION AT ALL TIMES AND IT SHALL BE ROUTINELY REPAIRED, AS DETERMINED BY THE ENGINEER.

FILTREXX™ CANADA	
324 GOVERNORS RD. EAST PARIS, ONTARIO CANADA, N3L 3E1 519-754-8295	
FILTREXX™ INTERNATIONAL	
35461 CRAFTON EASTERN RD GRAFTON, OH USA 44048 440-928-8041	
DITCH CHECKS	
DESIGN: R.D.B.	SCALE: N.T.S.
CHECKED: R.D.B.	DRAWN: G.W.S.
SHEET: 3 of 7	DWG. NO.:
DATE:	T3



THE UNDERGROUND UTILITIES SHOWN HEREON WERE PLOTTED FROM AVAILABLE INFORMATION AND DO NOT NECESSARILY REFLECT THE ACTUAL EXISTENCE, NONEXISTENCE, SIZE, TYPE, NUMBER OR LOCATION OF THESE OR OTHER UTILITIES. THE GENERAL CONTRACTOR SHALL BE RESPONSIBLE FOR VERIFYING THE ACTUAL LOCATION OF ALL UNDERGROUND UTILITIES, SHOWN OR NOT SHOWN, AND SAID UTILITIES SHALL BE LOCATED IN THE FIELD PRIOR TO ANY GRADING, EXCAVATION OR CONSTRUCTION OF IMPROVEMENTS. THESE PROVISIONS SHALL IN NO WAY ABSOLVE ANY PARTY FROM COMPLYING WITH THE UNDERGROUND FACILITY SAFETY AND DAMAGE PREVENTION ACT, CHAPTER 319, RSMO.

ISSUE	REMARKS/DATE
1	12-12-03 FIRST SUBMITTAL
2	1-20-04 CITY OF FALLON COMMENTS
3	2-09-04 CITY OF FALLON COMMENTS

PREPARED FOR:
**McBride & Son Homes
Land Development, Inc.**
#1 McBride & Son Center Drive
Chestertown, Missouri 63005
(636) 637-2000

PREPARED BY:
THE STERLING CO.
ENGINEERS & SURVEYORS
5055 NEW BAUMGARTNER ROAD
ST. LOUIS, MISSOURI 63129
(314) 487-0440 FAX 487-8944
E-Mail: Sterling@sterling-eng-sur.com

DRAWN:	DESIGNED:	CHECKED:
FOX HAVEN		
PROJECT:	SILTATION CONTROL DETAILS	
NO. 03 06 147	SHEET	
M.S.D. PH 6	SHEET	
DIGITAL FILE LOCATION: SERVER-STERLING-2 01/07/07.dwg	OF 6	