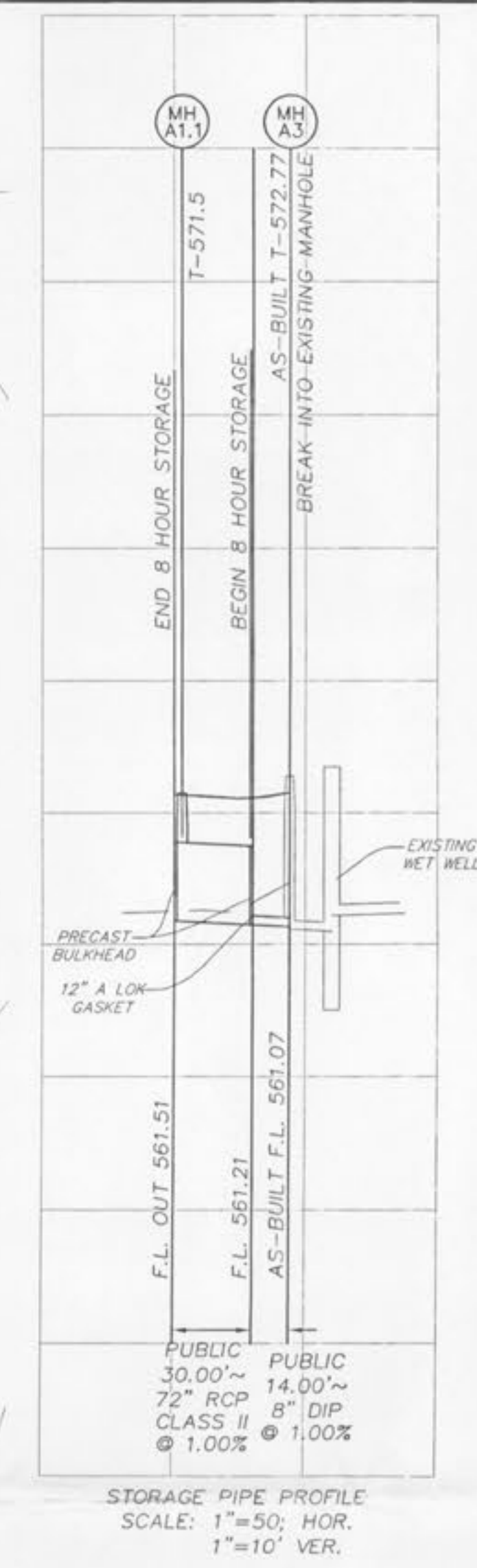
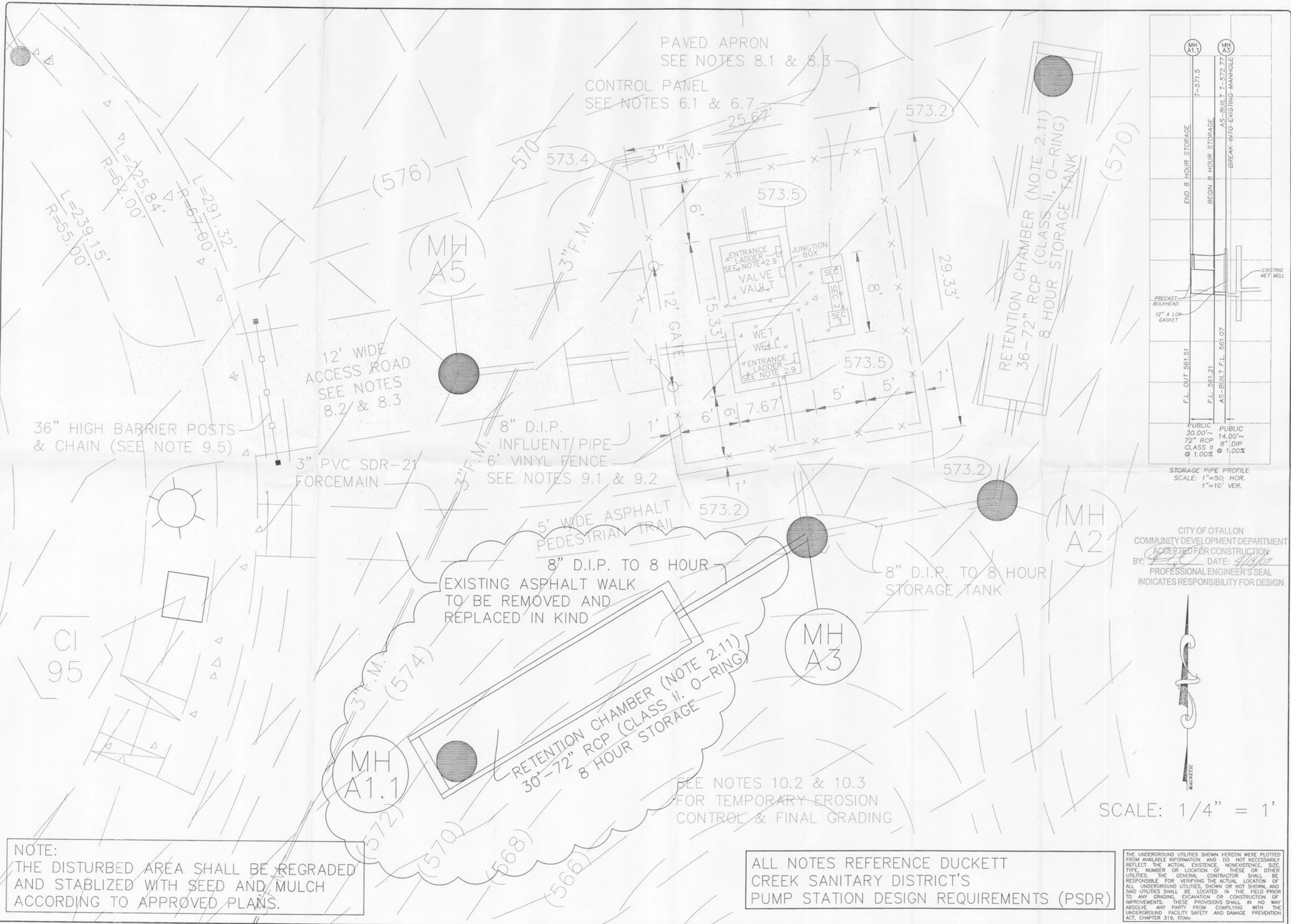


Drawing name: K:\0206147 Jms Tract\dwg\IMPROVEMENTS\6147PUMPSTATION-ofallonexhibit.dwg Plotted on Apr 16, 2007 - 8:41am Plotted by Jluetherhaus



CITY OF O'FALLON
COMMUNITY DEVELOPMENT DEPARTMENT
ACCEPTED FOR CONSTRUCTION
BY: *[Signature]* DATE: 4/18/07
PROFESSIONAL ENGINEER'S SEAL
INDICATES RESPONSIBILITY FOR DESIGN



SCALE: 1/4" = 1'

ISSUE	REMARKS/DATE
1	03-01-04 FIRST SUBMITTAL
2	06-15-04 REVISED PER CITY & DCSD COMMENTS
3	07-20-04 REVISED PER CITY COMMENTS
4	09-04-04 REVISED PER DCSD COMMENTS
5	04-05-07 STORAGE PIPE ADDITION
6	04-16-07 STORAGE PIPE ADDITION COMMENTS

PREPARED FOR:
**McBride & Son Homes
Land Development, Inc.**
#1 McBride & Son Center Drive
Chesterfield, Missouri 63005
(636) 537-2000



PREPARED BY:
THE STERLING CO.
ENGINEERS & SURVEYORS
5055 NEW BAUGARTNER ROAD
ST. LOUIS, MISSOURI 63129
(314) 487-0440 FAX 487-8944
E-Mail: Sterling@sterling-eng-sur.com

PROJECT:	NO. 03 06 147
DRAWN:	SHEET 35
DESIGNED:	REVISIONS
CHECKED:	DATE
SHEET TITLE: PUMP STATION #1 PLAN	

THE UNDERGROUND UTILITIES SHOWN HEREON WERE PLOTTED FROM AVAILABLE INFORMATION AND DO NOT NECESSARILY REFLECT THE ACTUAL EXISTENCE, NONEXISTENCE, SIZE, TYPE, NUMBER OR LOCATION OF THESE OR OTHER UTILITIES. THE GENERAL CONTRACTOR SHALL BE RESPONSIBLE FOR VERIFYING THE ACTUAL LOCATION OF ALL UNDERGROUND UTILITIES, SHOWN OR NOT SHOWN, AND SAID UTILITIES SHALL BE LOCATED IN THE FIELD PRIOR TO ANY GRADING, EXCAVATION OR CONSTRUCTION OF IMPROVEMENTS. THESE PROVISIONS SHALL IN NO WAY ABSOLVE ANY PARTY FROM COMPLYING WITH THE UNDERGROUND FACILITY SAFETY AND DAMAGE PREVENTION ACT, CHAPTER 319, RSMo

BASE MAP

APR 16 2007