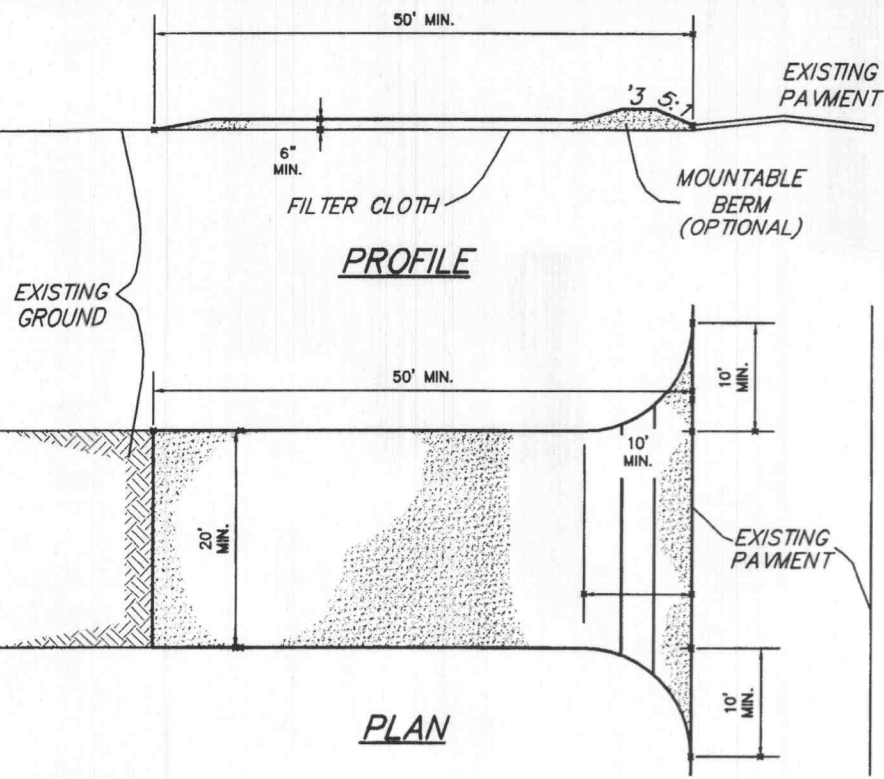
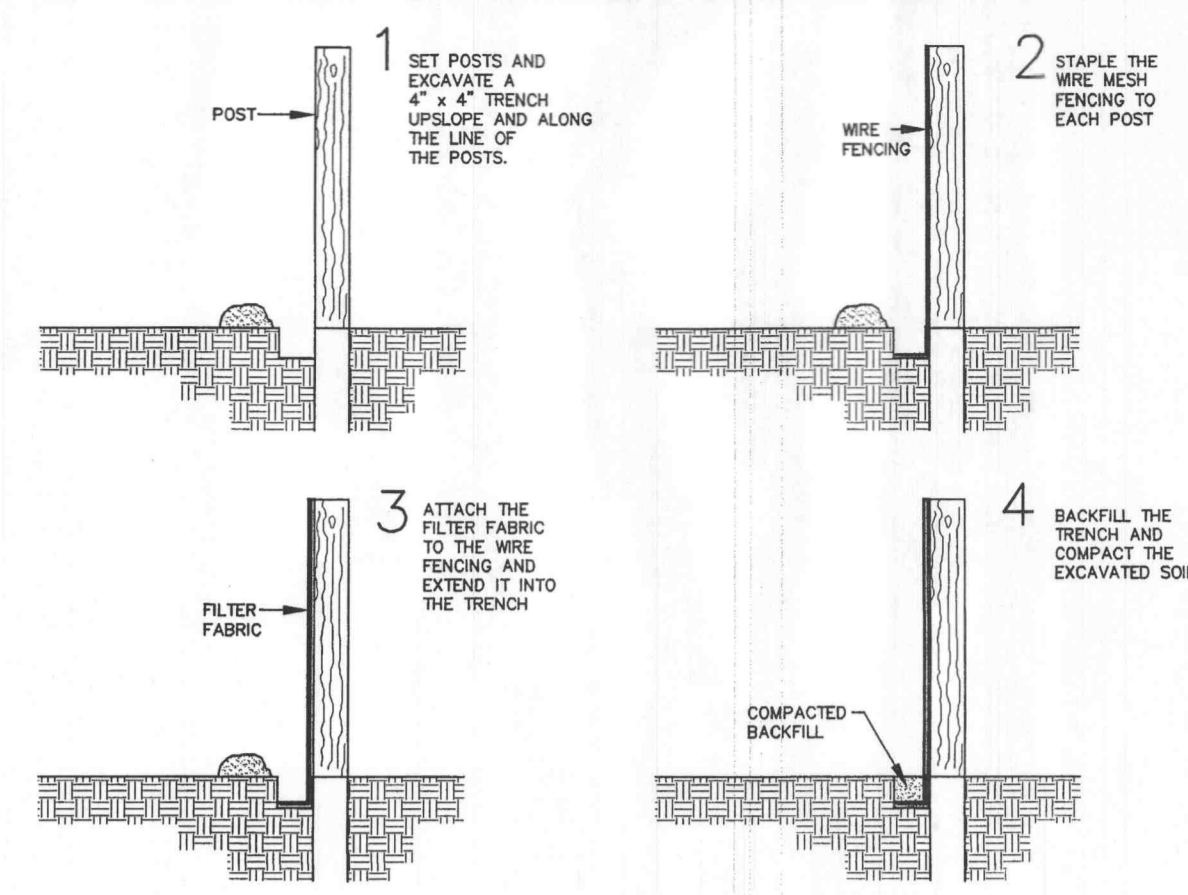


- REVISIONS:
- 08-16-05 Duckett Comments
 - 08-16-05 PWSO #2 Comments
 - 08-16-05 Fire Department
 - 08-30-05 Per City Comments
 - 09-06-05 PWSO #2 Comments
 - 10-12-05 Per City Comments
 - 10-26-05 Meter Per Client
 - 11-22-05 MoDOT Comments
 - 11-28-05 MoDOT Comments
 - 12-06-05 Fire Department
 - 12-07-05 Per City Comments
 - 12-15-05 Per City Comments



ROUND PIPE			
Inside Diameter of Pipe (Inches)	"M" Payline Width of Trench (Inches)	"M" Payline Width of Trench (Feet)	Pay-volumes cu. ft. per ft. Concrete Encasement
4	28	2.33	3.20
6	28	2.33	3.46
8	28	2.33	3.70
10	28	2.33	3.86
12	28	2.33	3.98
15	32	2.67	4.89
18	35	2.92	5.63
21	39	3.25	6.61
24	42	3.50	7.39
27	45	3.75	8.18
30	49	4.08	9.30
33	53	4.42	10.53
36	56	4.67	11.43
39	DISCONTINUED		
42	63	5.25	13.38

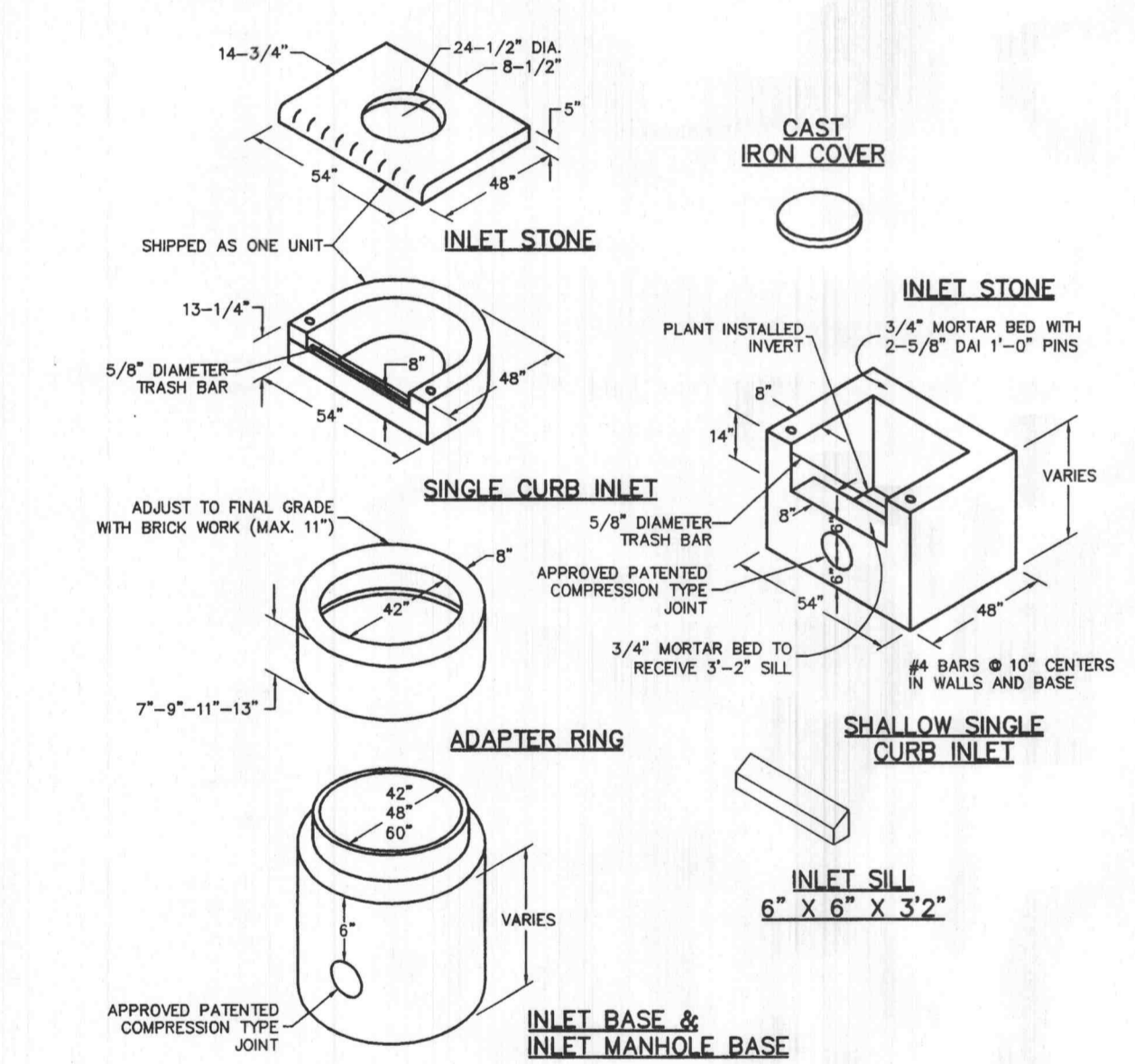


NOTES:

- PROVIDE HANDICAP RAMP WHERE TRAIL INTERSECTS ACCESS DRIVES OR STREETS OR WHERE TRAIL INTERSECTS WITH CURBING (SEE PLAN).
- PROVIDE STRIPING OR A COLORED TEXTURED PAVEMENT THROUGH THE ACCESS DRIVES OR STREETS INTO THE DEVELOPMENT.
- MAXIMUM SLOPE OF THE PATH SHALL NOT EXCEED 8% AND 2% CROSS SLOPE PER CITY OF FALLON SPECIFICATIONS.
- THE TRAIL SHALL BE CONSTRUCTED WITH A CONSISTENT SLOPE WITH VERTICAL CURVES A MINIMUM OF 50' IN LENGTH. AFTER FINAL COMPRESSION, THE SURFACE SHALL BE SMOOTH AND TRUE TO THE ESTABLISHED CROWN AND GRADE. ANY LOW OR DEFECTIVE PLACES SHALL IMMEDIATELY BE REMEDIED BY CUTTING OUT THE COURSE AT SUCH SPOTS AND REPLACING IT WITH FRESH HOT MIXTURE, WHICH SHALL BE IMMEDIATELY COMPACTED TO CONFORM WITH THE SURROUNDING AREA AND SHALL BE THOROUGHLY BONDED TO IT. THE FINISHED PAVEMENT SHALL BE SET FREE FROM DEPRESSIONS EXCEEDING ONE-EIGHTH INCH AS MEASURED WITH A TEN-FOOT STRAIGHT EDGE PARALLELING THE CENTERLINE OF THE TRAIL.

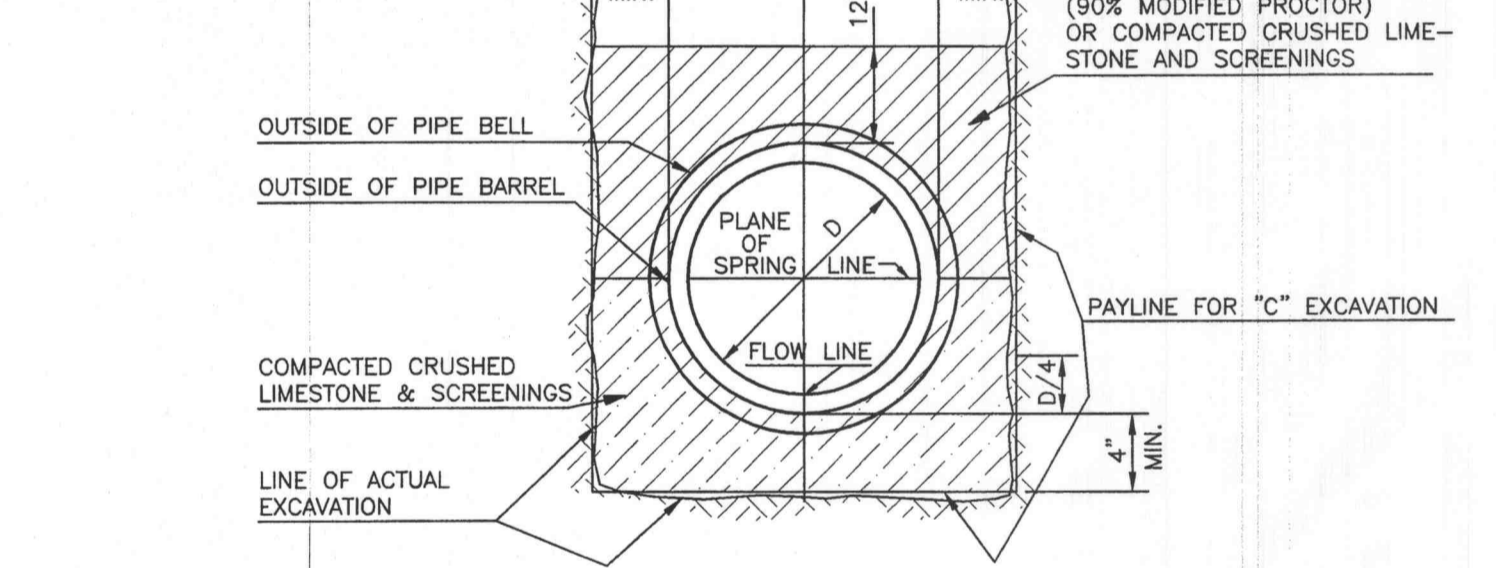
- CONSTRUCTION SPECIFICATIONS
- Stone Size - Use 2" stone, or reclaimed or recycled concrete equivalent.
 - Length - As required, but not less than 50 feet (except on a single residence lot where a 30 foot minimum length would apply).
 - Thickness - Not less than six (6) inches.
 - Width - Twenty (20) foot minimum, but not less than the full width at points where ingress or egress occurs.
 - Filter Cloth - Will be placed over the entire area prior to placing of stone. Filter will not be required on a single family residence lot.
 - Surface Water - All surface water flowing or diverted toward construction entrances shall be piped across the entrance. If piping is impractical, a mountable berm with 5:1 slopes will be permitted.
 - Maintenance - The entrance shall be maintained in a condition which will prevent tracking or flowing of sediment onto public rights-of-way. This may require periodic top dressing with additional stone as conditions demand and repair and/or cleanout of any measures used to trap sediment. All sediment spilled, dropped, washed or tracked onto public rights-of-way must be removed immediately.
 - Washing - Wheels shall be cleaned to remove sediment prior to entrance onto public rights-of-way. When washing is required, it shall be done on an area stabilized with stone and which drains into an approved sediment trapping device.
 - Periodic inspection and needed maintenance shall be provided after each rain.

STABILIZED CONSTRUCTION ENTRANCE/WASHDOWN AREA
NOT TO SCALE

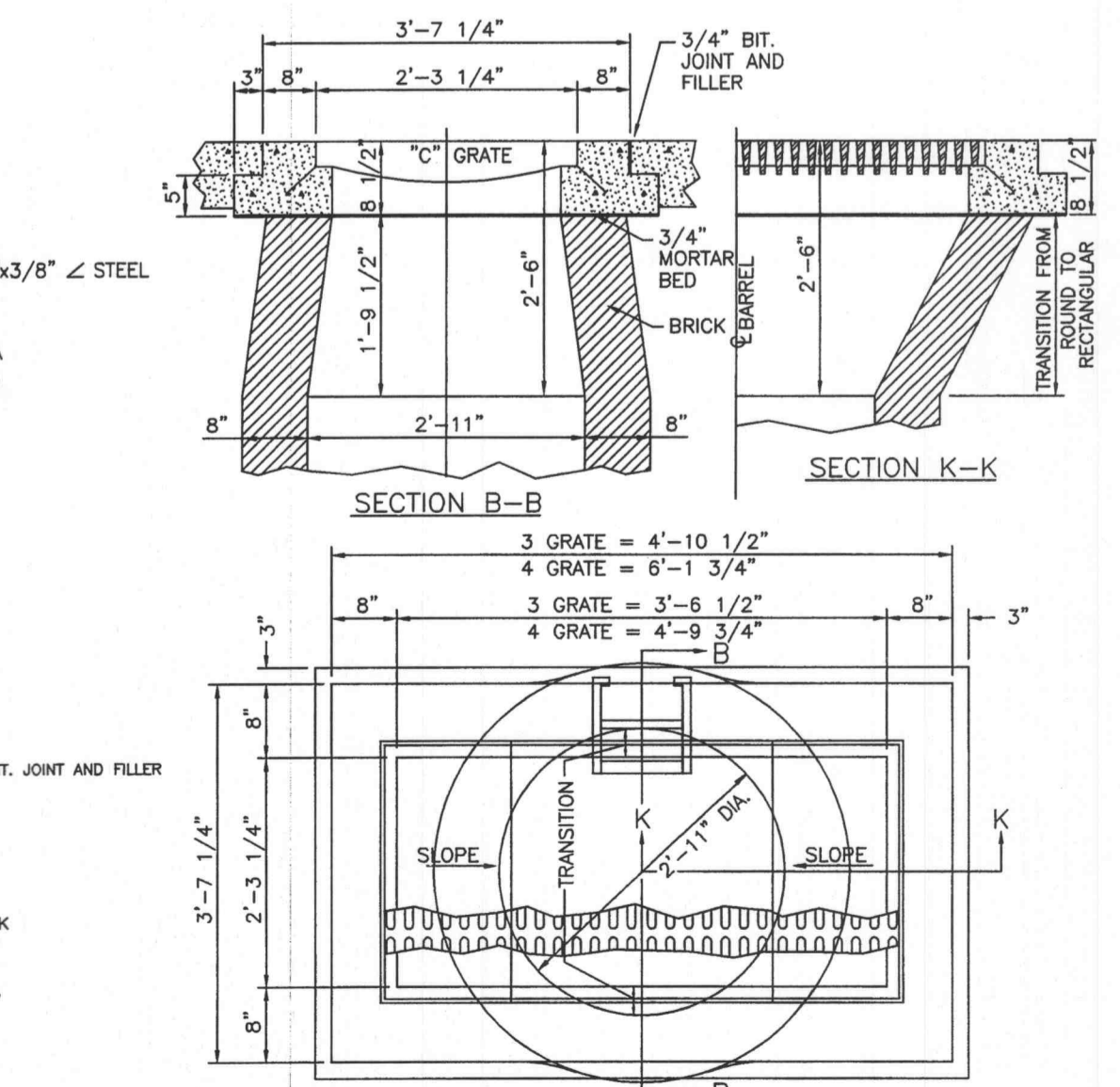


- NOTES:
- STRAW BALES, NOT HAY BALES SHALL BE USED.
 - BUTT ENDS OF BALES TIGHTLY TOGETHER.
 - INSTALL BALES WITH BINDING AROUND SIDES, NOT TOP AND BOTTOM.
 - FILL ANY GAP BETWEEN BALES BY WEDGING LOOSE STRAW BETWEEN THEM.

SEDIMENT BARRIER
NOT TO SCALE

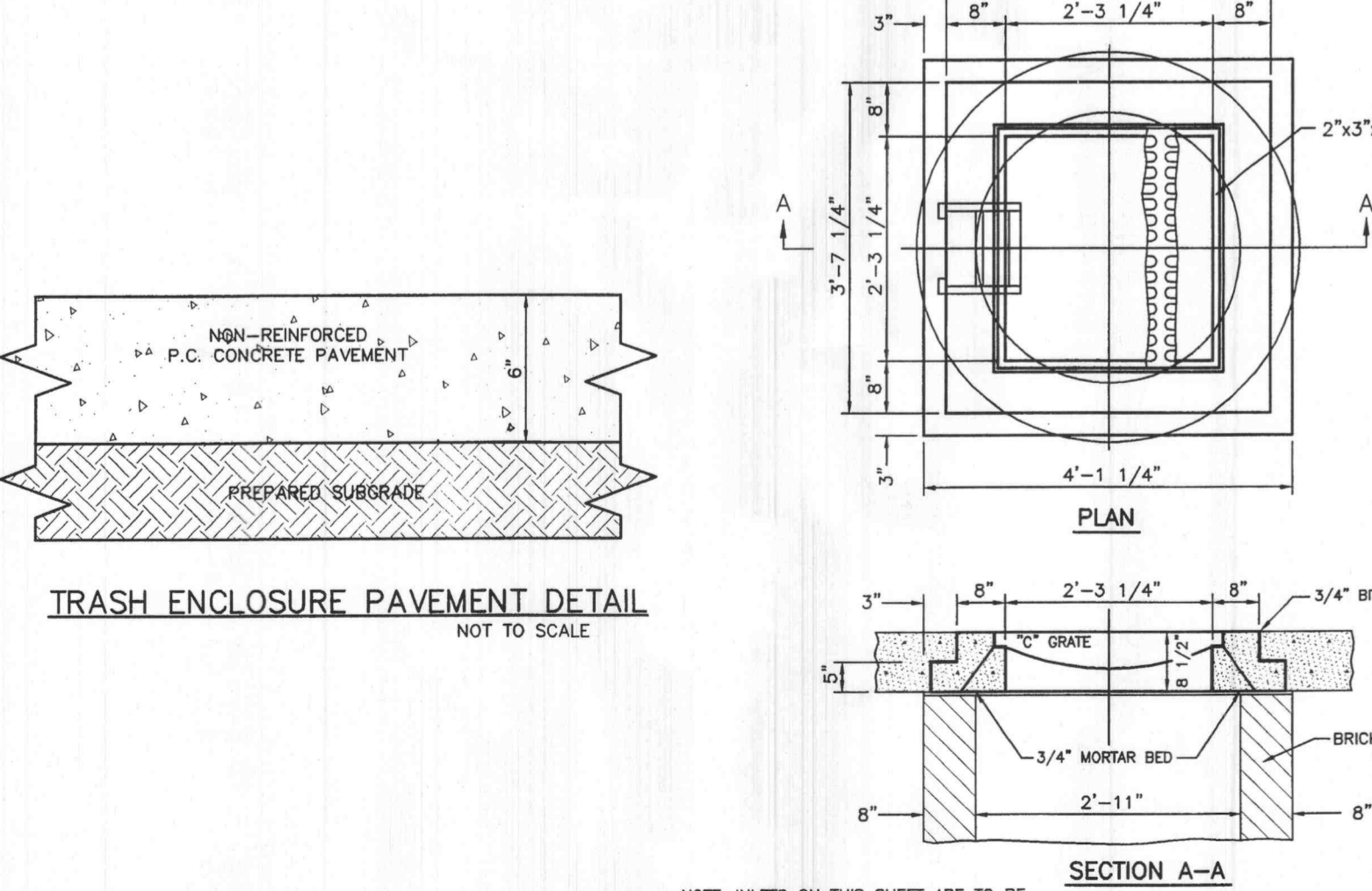


PIPE BEDDING CLASS 'C'
(FOR ALL PIPE EXCEPT REINFORCED CONCRETE PIPE)



PIPE BEDDING CLASS 'C'
(MODIFIED FOR REINFORCED CONCRETE PIPE)

SINGLE STREET INLETS PRECAST CONCRETE
NOT TO SCALE

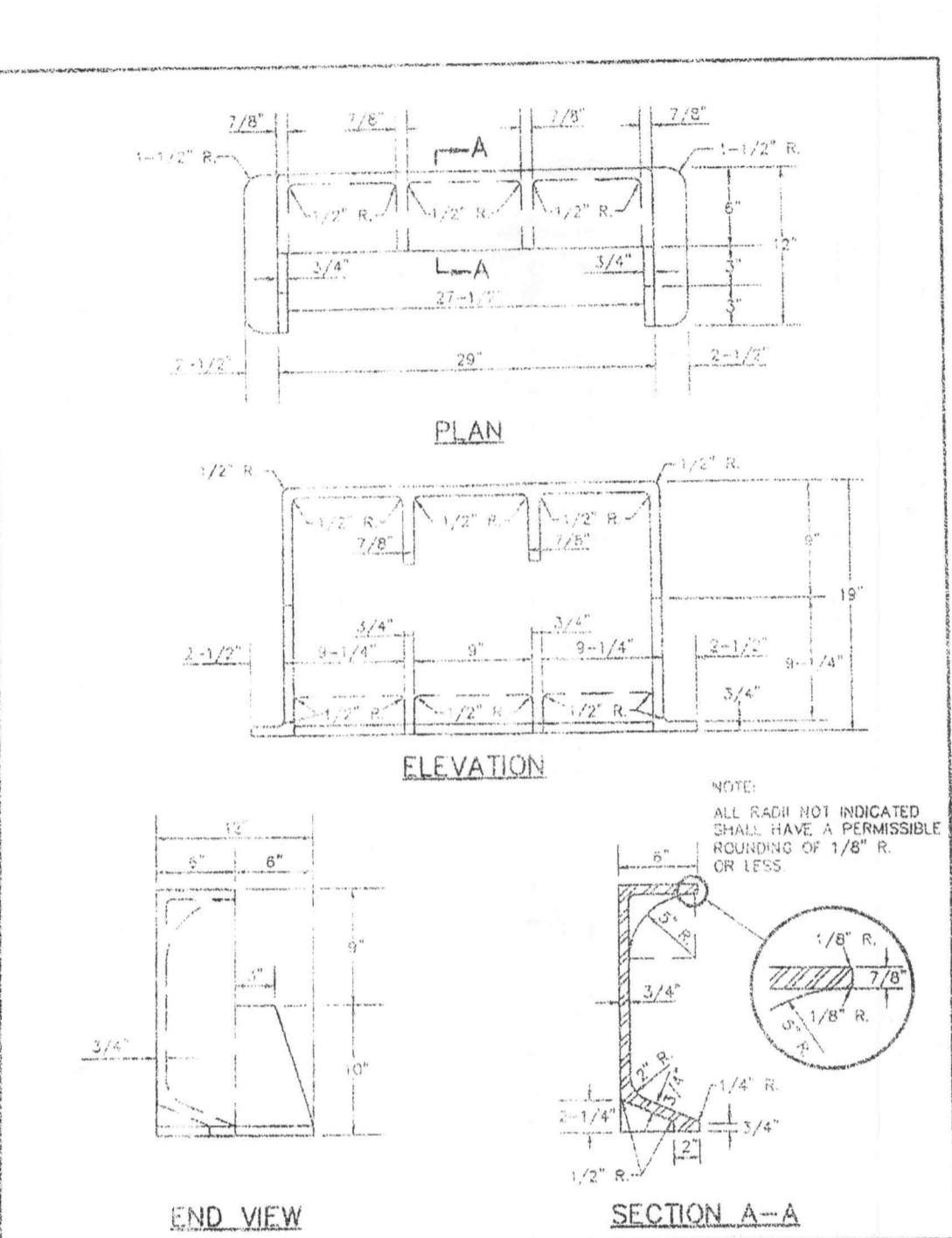


TRASH ENCLOSURE PAVEMENT DETAIL
NOT TO SCALE

2 GRATE INLET

3&4 GRATE INLET

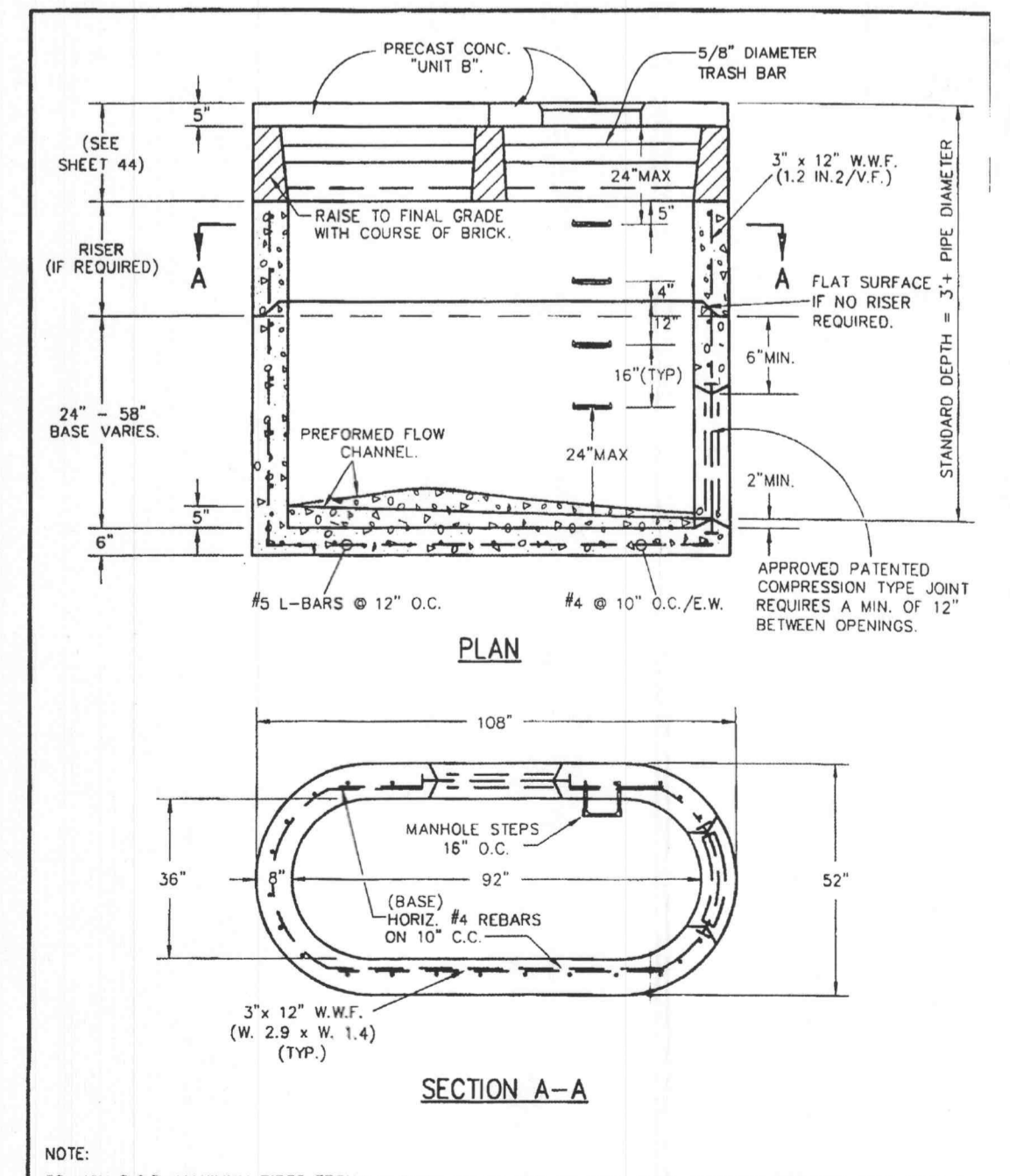
TYPICAL WATER AND SEWER SEPARATION
NOT TO SCALE



CAST IRON SIDE INTAKE UNIT FOR GRATED INLETS
249 LBS.

METROPOLITAN ST. LOUIS SEWER DISTRICT
Standard Details of Sewer Construction

DOUBLE UNTRAPPED STREET INLET PRECAST CONCRETE



DOUBLE UNTRAPPED STREET INLET PRECAST CONCRETE

CAST IRON SIDE INTAKE UNIT FOR GRATED INLETS
249 LBS.

METROPOLITAN ST. LOUIS SEWER DISTRICT
Standard Details of Sewer Construction

GRATE SEAT FOR 2 GRATE WITH SIDE INTAKE

METROPOLITAN ST. LOUIS SEWER DISTRICT
Standard Details of Sewer Construction

GRATE SEAT FOR 2 GRATE WITH SIDE INTAKE

METROPOLITAN ST. LOUIS SEWER DISTRICT
Standard Details of Sewer Construction

GRATE SEAT FOR 2 GRATE WITH SIDE INTAKE