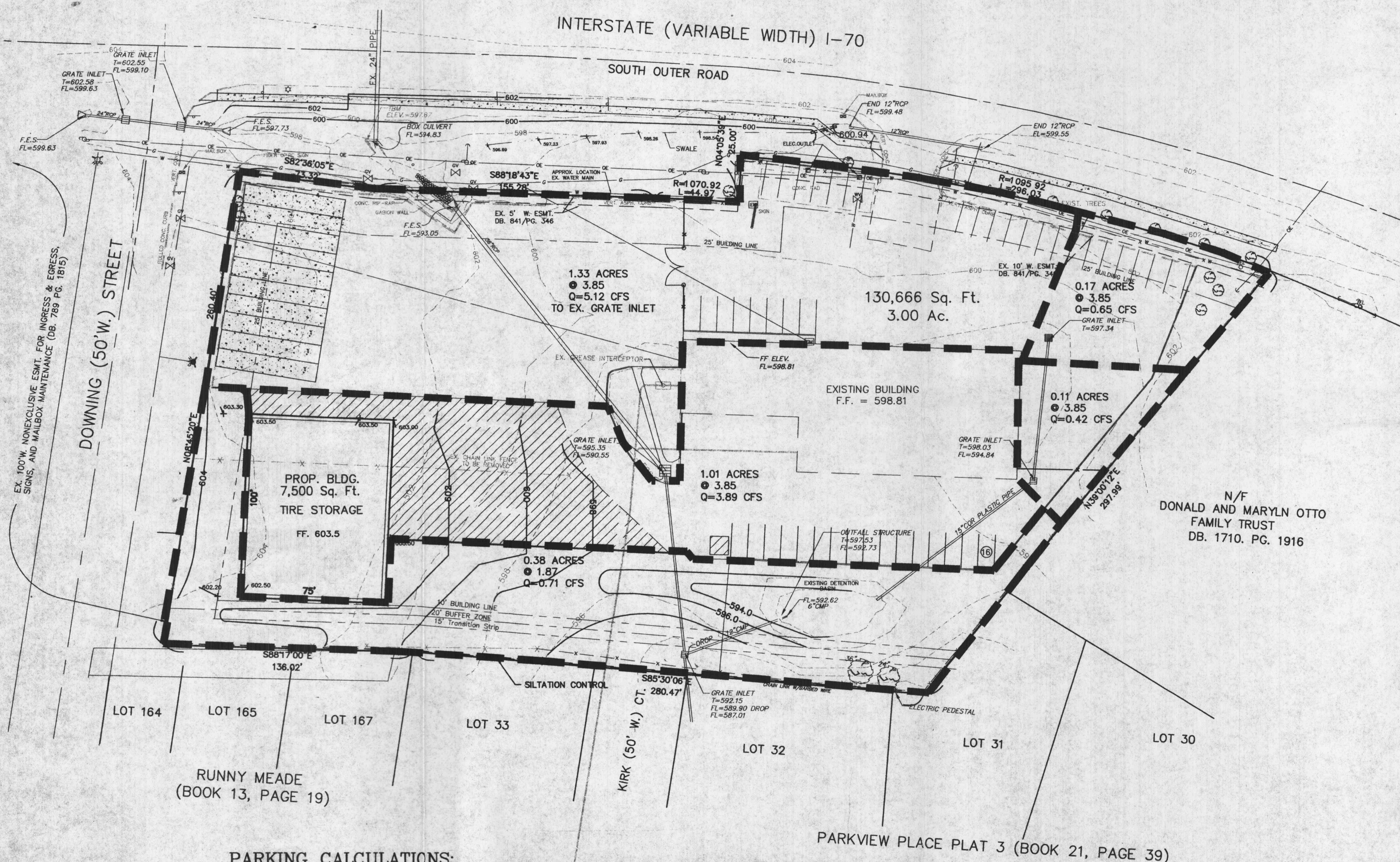


INTERSTATE (VARIABLE WIDTH) I-70

SOUTH OUTER ROAD



GRADING NOTES

1. All straw bales must be countersunk a minimum of 3" and additional straw bales shall be placed at the direction of the city.
2. The contractor shall restore offsite construction areas to an equal or better condition than existed prior to commencement of construction.
3. Earth subgrade for paved areas must be compacted to 90% of maximum dry density as determined by a "Modified Proctor Test," (ASTM D-1557), and must be inspected and approved by a City Representative, before paving may commence.
4. Siltation control shall be straw bales placed end to end and anchored with no less than 2 1/2" x 4" reinforcing rods. Upon completion of storm sewers, straw bales shall be placed on all sides of structures and shall remain until all graded areas are seeded or sodded.
5. All grade shall be within 0.1 feet more or less of those shown on the grading plan.
6. No slope shall be greater than 3:1 and shall be either sodded or seeded or mulched.
7. The contractor shall field investigate the entire site prior to his bid submittal noting the existing vegetation and trees and including the removal and disposal of same in his bid.
8. No area shall be cleared without permission of the developer.
9. Siltation control will be provided as required to prevent run-off.

PARKING CALCULATIONS:

Required Parking: 1 Space for every 500 sq.ft. gross  
Gross sq.ft. = 7200sq.ft.  
14.4 Parking Spaces Required  
16 Parking Spaces Provided

Required Loading: 1 Space for every 5000 sq.ft. gross  
1 Additional Space for every 20,000 sq.ft. gross  
1 Parking Spaces Required  
1 Parking Spaces Provided

NOTE  
Underground utilities and structures have been plotted from available information and therefore, their location must be considered approximate only. It is the responsibility of the individual contractors to notify the utility companies before actual construction.

FOR DRAINAGE PURPOSES ONLY  
NOT TO BE USED FOR  
CONSTRUCTION