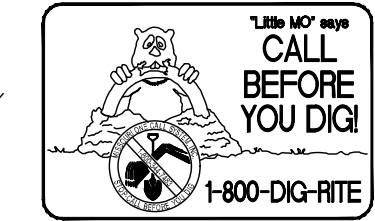


ESTIMATED SANITARY FLOW = 1,473 GALLONS PER DAY

UTILITIES NOTE

UNDERGROUND FACILITIES, UTILITIES AND STRUCTURES HAVE BEEN PLOTTED FROM AVAILABLE INFORMATION AND THEREFORE, THEIR LOCATION MUST BE CONSIDERED APPROXIMATE ONLY. THERE MAY BE OTHERS, THE EXISTENCE OF WHICH IS PRESENTLY NOT KNOWN. IT IS THE RESPONSIBILITY OF THE CONTRACTOR TO HAVE ALL UTILITIES LOCATED IN THE FIELD PRIOR TO EXCAVATION OR CONSTRUCTION.

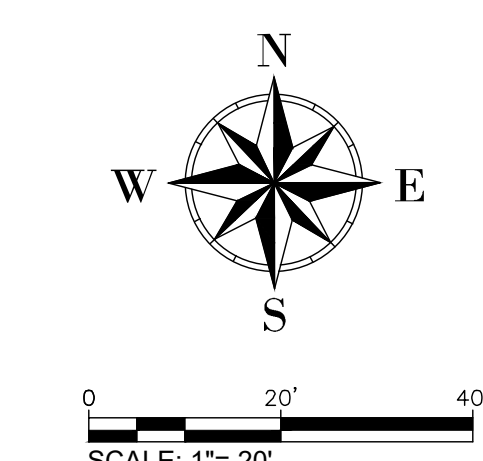
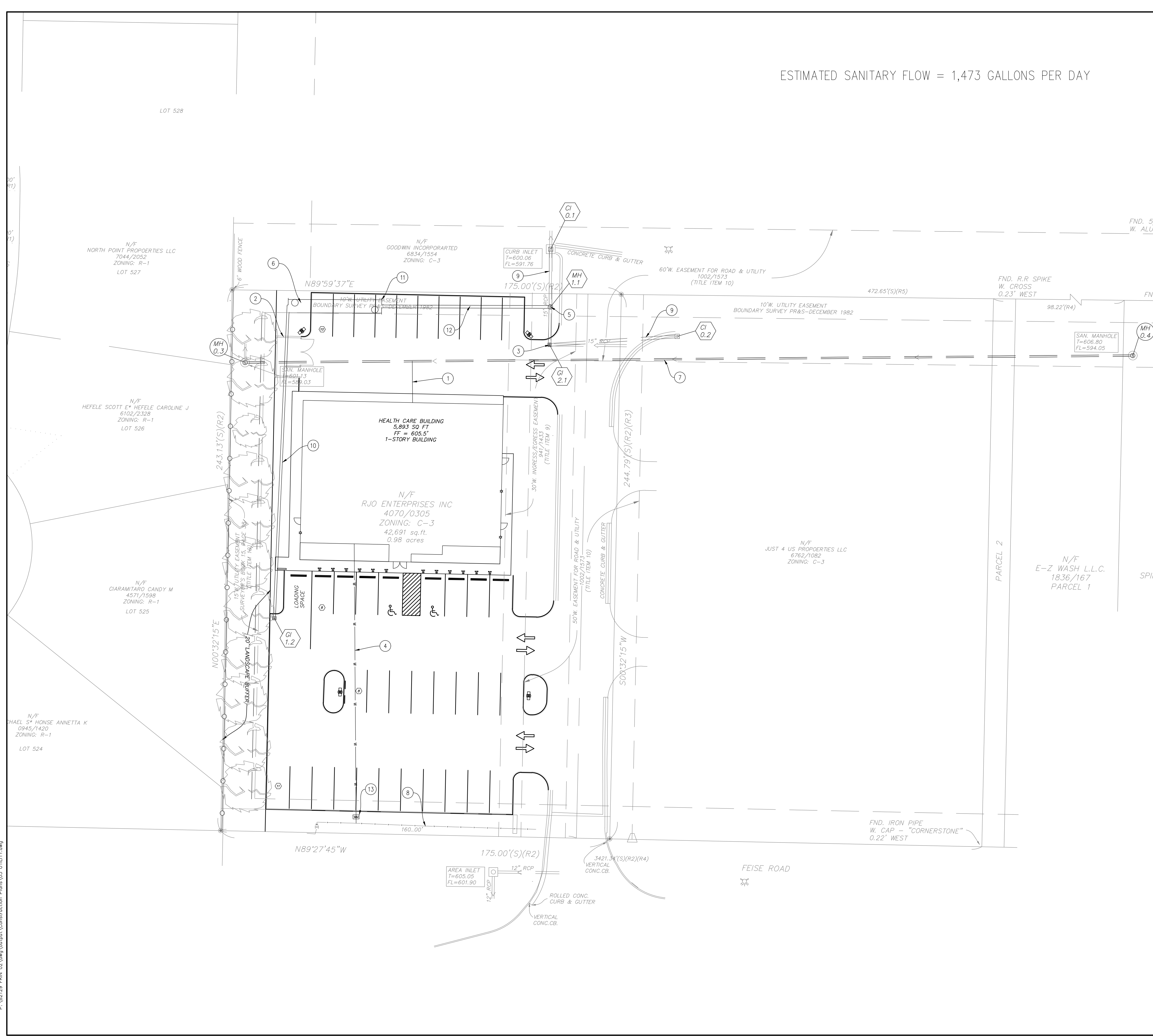


UTILITY PLAN NOTES

- IT IS THE RESPONSIBILITY OF ALL CONTRACTORS CONTACT UTILITY COMPANIES AT LEAST 48 HOURS PRIOR TO ANY EXCAVATION ON OR RELATING TO THIS PROJECT. IT IS THE RESPONSIBILITY OF THE CONTRACTOR TO MAKE OR ARRANGE FOR THE RELOCATION OF ANY UTILITIES AFFECTED BY THE PROJECT CONSTRUCTION.
- ALL CONSTRUCTION SHALL BE IN ACCORDANCE WITH THE CITY OF O'FALLON STANDARD SPECIFICATIONS, UNLESS OTHERWISE NOTED.
- ALL DIMENSIONS SHOWN HEREON ARE AT FACE OF CURB, UNLESS NOTED OTHERWISE.
- WORK NOT SPECIFICALLY DETAILED OR CALLED OUT HEREON REQUIRED TO COMPLETE THE SITE CONSTRUCTION SHALL BE CONSIDERED INCIDENTAL TO THE WORK WHICH IS CALLED OUT HEREON.
- REFER TO ARCHITECTURAL PLANS FOR EXTERIOR SITE LIGHTING, INTERIOR BUILDING UTILITIES AND BUILDING DETAILS.

UTILITY PLAN KEYED NOTES

- PROPOSED 6" SANITARY LATERAL 2% MINIMUM SLOPE
- PROPOSED TRASH ENCLOSURE W/ PASSIVE ENTRY
- CONVERT CURB INLET TOP TO GRATE INLET TOP
- PROPOSED 1.5" WATER SERVICE LINE
- PROPOSED STORM SEWER MANHOLE
- 72" PERFORMED CMP, UNDERGROUND DETENTION / INFILTRATION
- EXISTING 8" SANITARY SEWER MAIN
- EXISTING 8" WATER MAIN
- EXISTING 15" RCP
- PROPOSED 12" ADS SANITITE HP
- PROPOSED 72" BULKHEAD
- PROPOSED 15" ADS SANITITE HP
- PROPOSED WATER METER LOCATION

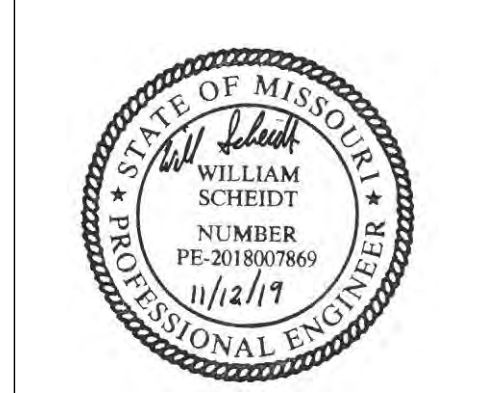


PROJECT TITLE
SITE PLAN
FRONTIER INTEGRATED HEALTH CENTER, INC
 PPS No. 82129.FRIN.02R
 TASK 002

St. Peters
 22 Richmond Center Court
 St. Peters, MO 65376
 Phone (636) 397-1211
 Fax (636) 397-1104
 www.prs.com



ENGINEERS AUTHENTICATION
 THE RESPONSIBILITY FOR PROFESSIONAL ENGINEERING LIABILITY ON THIS PROJECT IS HEREBY LIMITED TO THE SET OF PLANS AUTHENTICATED BY THE SEAL, SIGNATURE, AND DATE HEREBY ATTACHED. RESPONSIBILITY IS ASSIGNED FOR ALL OTHER ENGINEERING PLANS INVOLVED IN THIS PROJECT AND SPECIFICALLY EXCLUDED HEREON AFTER THIS DATE UNLESS RE-IDENTIFIED.
PICKETT, RAY & SILVER, INC. MO LICENSE #00026



WILL SCHEIDT, P.E.
 PROFESSIONAL ENGINEER LICENSE 2018007869

Developer / Owner Information
 RJO Enterprises Inc.
 2011 Highway K
 O'Fallon, Missouri 63366

P+Z No.
 19-000007
City No.
 19-002258

UTILITY PLAN
Page No.
 5 of 14

*** 11/12/2019 IMPROVEMENT PLAN SUBMITTAL - NOT APPROVED ***