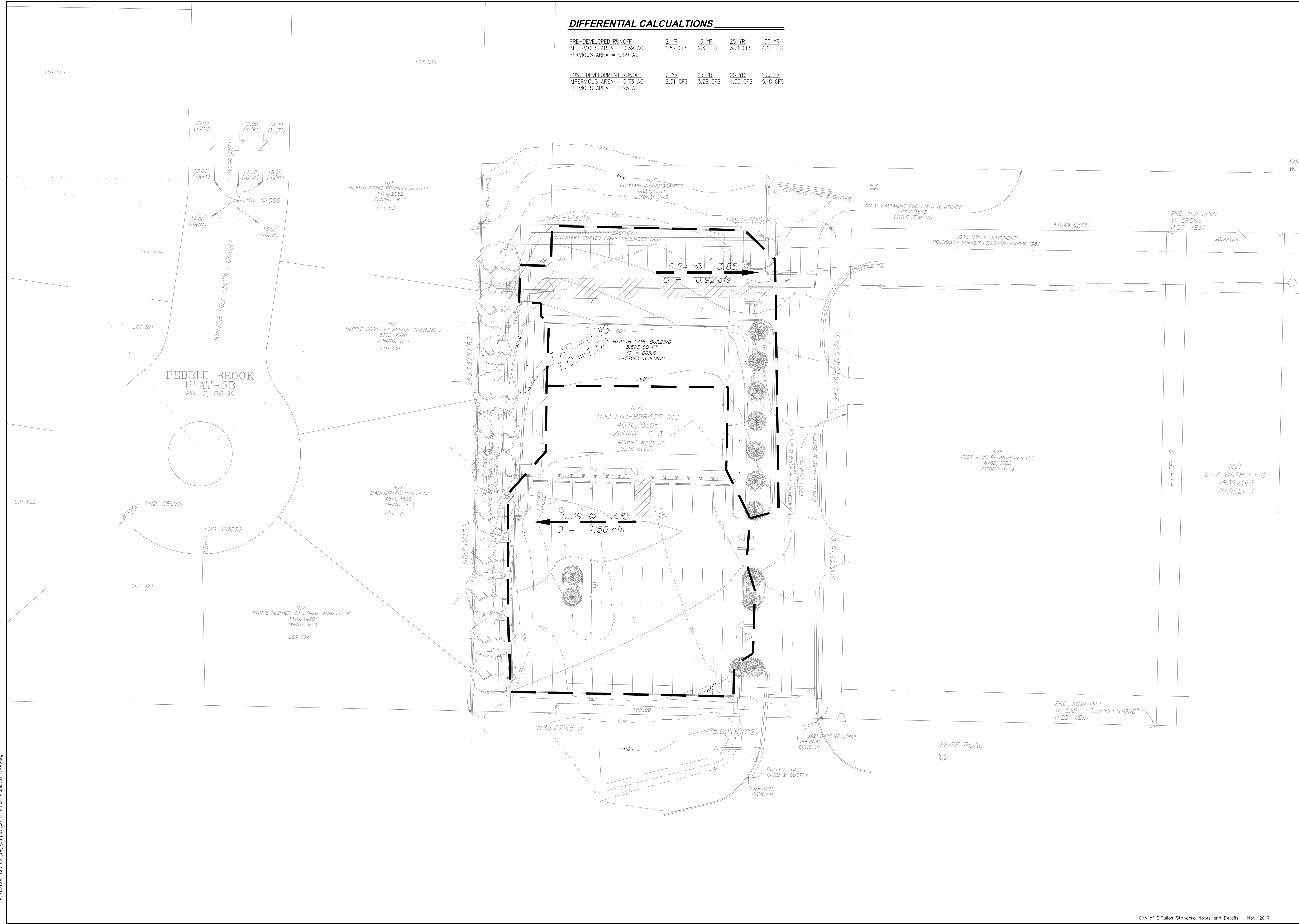


DIFFERENTIAL CALCUALTIONS

PRE-DEVELOPED RUNOFF
 IMPERVIOUS AREA = 0.39 AC
 PERVIOUS AREA = 0.59 AC

POST-DEVELOPMENT RUNOFF
 IMPERVIOUS AREA = 0.73 AC
 PERVIOUS AREA = 0.25 AC



PROJECT TITLE
SITE PLAN
FRONTIER INTEGRATED HEALTH
CENTER, INC

St. Peters
 22 Richmond Center Court
 St. Peters, MO 65276
 Phone (636) 397-1211
 Fax (636) 397-1104
 www.prs.com



ENGINEERS AUTHENTICATION
 THE RESPONSIBILITY FOR PROFESSIONAL ENGINEERING LIABILITY ON THIS PROJECT IS HEREBY LIMITED TO THE SET OF PLANS AUTHENTICATED BY THE SEAL, SIGNATURE, AND DATE HEREON ATTACHED. NO OTHER LIABILITY IS ASSUMED FOR ALL OTHER ENGINEERING PLANS INVOLVED IN THIS PROJECT AND SPECIFICALLY EXCLUDED HEREON AS OF THIS DATE, UNLESS REAUTHENTICATED.
PROCKETT, RAY & SILVER, P.C. MO 16
 LICENSE #0026



WILL SCHEIDT, P.E.
 PROFESSIONAL ENGINEER LICENSE 2018007869

Developer / Owner Information
RJO Enterprises Inc.
 2011 Highway K
 O'Fallon, Missouri 63366

P+Z No.
 19-000007
City No.
 19-002258

DRAINAGE AREA MAP
 Page No.
 9 of 14

*** 11/12/2019 IMPROVEMENT PLAN SUBMITTAL - NOT APPROVED ***