

ESTIMATED EARTHWORK QUANTITIES

CUT:	#849 CUBIC YARD
ADJUSTED FILL(15% SHRINKAGE FACTOR):	#323 CUBIC YARD
NET:	#525 CUBIC YARD (HEAVY)

THE ENGINEER HAS CALCULATED THE ABOVE QUANTITIES OF EARTHWORK TO BE REQUIRED AS AN ESTIMATE OF THE BULK MOVEMENT OR REDISTRIBUTION OF SOILS ON THIS PROJECT. AS AN ESTIMATE, THESE QUANTITIES ARE INTENDED FOR GENERAL USE, AND THE ENGINEER ASSUMES NO LIABILITY FOR COST OVERRUNS DUE TO EXCESS EXCAVATED MATERIALS OR SHORTAGES OF FILL.

THE QUANTITIES ESTIMATED FOR EACH OF THE IMPROVEMENT ITEMS LISTED AS PROPOSED ON THE SITE ENGINEERING PLANS PREPARED BY ABOVE, ARE BASED UPON THE HORIZONTAL AND VERTICAL LOCATION OF PICKETT, RAY & SILVER, INC.

THE ENGINEER'S EARTHWORK ESTIMATE DOES NOT INCLUDE ANY OF THE FOLLOWING ITEMS REQUIRING EARTHWORK THAT MAY BE NECESSARY FOR COMPLETION OF THE PROJECT: MISCELLANEOUS UNDERGROUND CONDUITS, INCLUDING SEWER LINES AND WATER MAINS, STANDARD MANHOLES, PROCESS OR TRANSFER PIPING, ELECTRICAL OR TELEPHONE CONDUITS, BASES FOR LIGHT STANDARDS, BUILDING FOOTINGS AND FOUNDATIONS, ETC.

THE ENGINEER ASSUMES NO RESPONSIBILITY FOR THE ACTUAL SIZE OF THE FIELD EXCAVATIONS MADE FOR THE INSTALLATION OF UNDERGROUND STRUCTURES, AND AS SUCH, THE ACTUAL QUANTITIES OF EARTHWORK FROM SUCH ITEMS MAY VARY FROM THE ESTIMATE SHOWN ABOVE.

THE ABOVE QUANTITIES ARE AN ESTIMATE AND SHOULD BE CONSIDERED AS SUCH. IT IS THE GRADING CONTRACTORS RESPONSIBILITY TO PREPARE A QUANTITY TAKEOFF AND NOTE ANY DISCREPANCIES TO THE ENGINEER.

BMP MAINTENANCE NOTES

INLET PROTECTION - FABRIC DROP

- INSPECT EVERY WEEK AND AFTER EVERY STORM
- REMOVE TRASH ACCUMULATION AND SEDIMENT ONCE IT REACHES DEPTH OF 6" AT INLET.
- REPLACE LOOSE, TORN OR CLOGGED FABRIC
- REPAIR ANY EROSION OR SETTLEMENT OF TEMPORARY BERM DOWNSTREAM OF INLET.
- MAINTAIN DROP IN TYPE FILTER PER MANUFACTURER SPECIFICATIONS.

SILT FENCE

- INSPECT EVERY WEEK AND AFTER EVERY STORM
- REMOVE SEDIMENT BUILDUP DEEPER THAN 1/2 THE FENCE HEIGHT OR 12", WHICHEVER IS LESS
- REPLACE TORN OR CLOGGED FABRIC, REPAIR LOOSE FABRIC
- REPAIR UNSTABLE OR BROKEN POSTS
- STABILIZE ANY AREAS SUSCEPTIBLE TO UNDERMINING
- EXTEND FENCE OR ADD ADDITIONAL ROW(S) OF FENCE IF NECESSARY TO PROVIDE ADEQUATE PROTECTION

CONSTRUCTION ENTRANCE

- IMMEDIATELY REMOVE ANY MUD OR DEBRIS TRACKED ONTO PAVED SURFACES
- REMOVE SEDIMENT AND CLOUS OF DIRT FROM CONSTRUCTION ENTRANCE CONTINUOUSLY
- REPLACE ROOF IF NECESSARY TO MAINTAIN CLEAN SURFACE
- REPAIR SETTLED AREAS

WASHDOWN STATION

- REMOVE SEDIMENT DAILY
- REPAIR SETTLED AREAS
- REPLACE ROOF IF NECESSARY TO MAINTAIN CLEAN SURFACE

ALLOWABLE NON-STORM WATER DISCHARGES

THE FOLLOWING NON-STORM WATER DISCHARGES ARE AUTHORIZED PROVIDED IT HAS BEEN DETERMINED BY THE PERMITTEE THAT THEY ARE NOT SIGNIFICANT CONTRIBUTORS OF POLLUTANTS TO THE MS4. IMPLEMENTATION OF POLLUTION PREVENTION MEASURES FOR NON-STORM WATER DISCHARGES IS REQUIRED FOR SIGNIFICANT CONTRIBUTORS.

- Water line flushing
- Landscape irrigation
- Diverted stream flows
- Rising ground waters
- Uncontaminated ground water infiltration (as defined at 40 CFR 35.2005(20))
- Uncontaminated pumped ground water
- Discharge from potable water sources
- Foundation drains
- Air conditioning condensation
- Irrigation water, springs
- Water from crawl space pumps
- Footing drains
- Lawn watering
- Individual resident car washing
- Flows from riparian habitats and wetlands
- Dechlorinated swimming pool discharges
- Street wash water
- Residential building wash waters, without detergents.

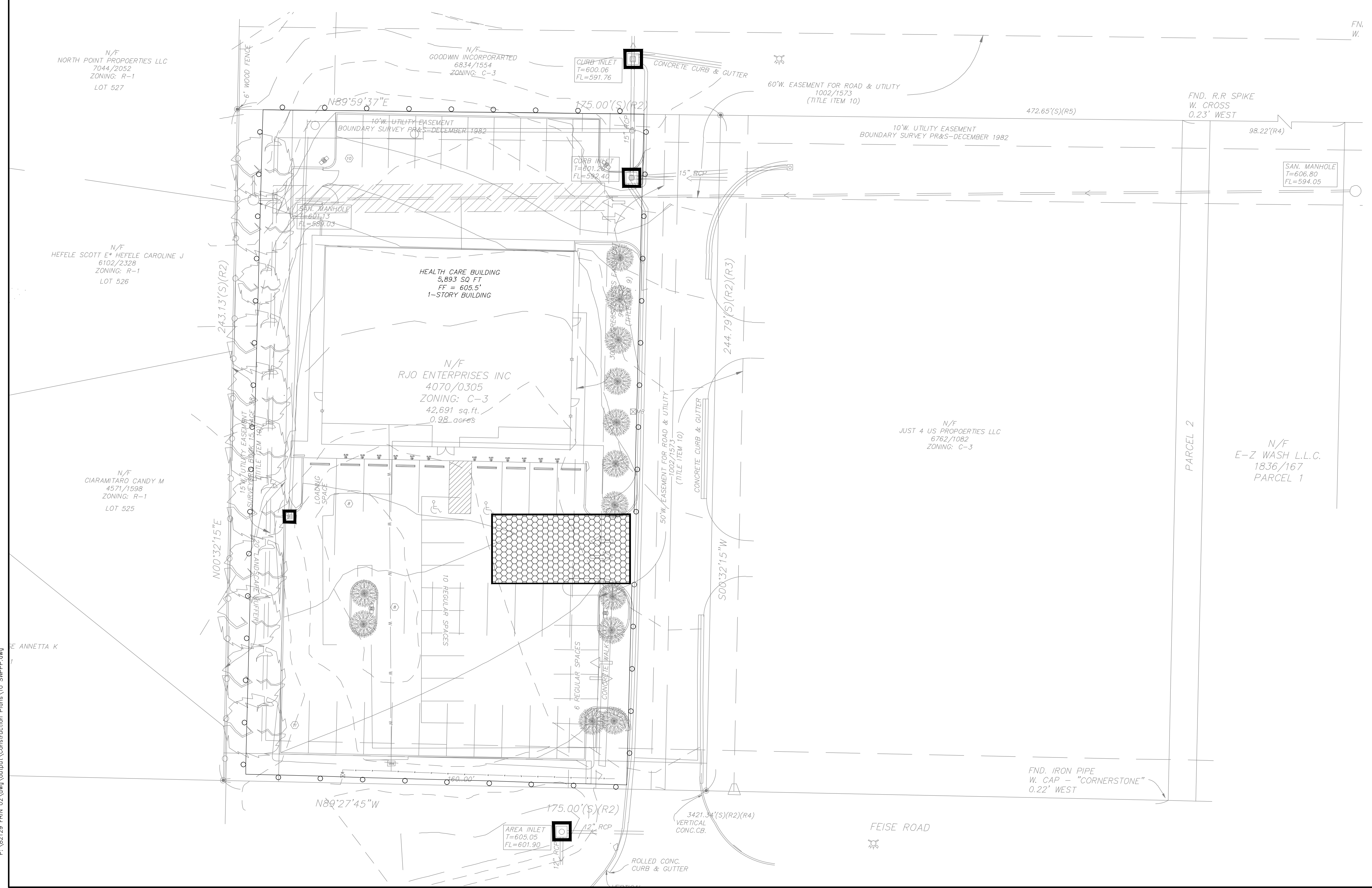
DISCHARGES OR FLOWS FROM FIRE FIGHTING ACTIVITIES OCCUR DURING EMERGENCY SITUATIONS. THE PERMITTEE IS NOT EXPECTED TO EVALUATE FIRE FIGHTING DISCHARGES WITH REGARD TO POLLUTANT CONTRIBUTIONS. THEREFORE, THESE DISCHARGES ARE AUTHORIZED AS ALLOWABLE NON-STORM WATER DISCHARGES, UNLESS IDENTIFIED, BY EPA, AS SIGNIFICANT SOURCES OF POLLUTANTS TO WATERS OF THE U.S.

CONTAINMENT FAILURE PLAN

IN THE EVENT OF ANY LOSS OF CONTAINED SEDIMENT:

- REPAIR ANY DAMAGED SILTATION FENCES.
- CLEAN UP ANY NECESSARY SITED AREAS.
- RESTORE ANY NECESSARY SITED AREAS.
- PROVIDE DOCUMENTATION OF ACTIONS & MANDATORY REPORTING TO ST LOUIS CITY AND MSD.

	SILTATION FENCE OR OTHER APPROVED PRODUCT	733 LF
	CONSTRUCTION ENTRANCE	1 EACH
	INLET PROTECTION	4 EACH
	DITCH CHECKS	0 EACH



FN. W.

98.22'(R4)

PARCEL 2

N/F WASH L.L.C. 1836/167 PARCEL 1

FND. IRON PIPE W. CAP - "CORNERSTONE" 0.22' WEST

FEISE ROAD

AREA INLET T=605.05 FL=601.90

3421.34'(S)(R4) VERTICAL CONC. CB.

12" RCP

ROLLED CONC. CURB & GUTTER

60'x20'

10' REGULAR SPACES

6' REGULAR SPACES

CONCRETE WALKWAY

50' W. EASEMENT FOR ROAD & UTILITY (TITLE ITEM 10)

CONCRETE CURB & GUTTER

15' RCP

60' W. EASEMENT FOR ROAD & UTILITY 1002/1573 (TITLE ITEM 10)

472.65'(S)(R5)

FND. R.R SPIKE W. CROSS 0.23' WEST

175.00'(S)(R2)

175.00'(S)(R2)

175.00'(S)(R2)

175.00'(S)(R2)

175.00'(S)(R2)

175.00'(S)(R2)

175.00'(S)(R2)

175.00'(S)(R2)

175.00'(S)(R2)

175.00'(S)(R2)

175.00'(S)(R2)

175.00'(S)(R2)

175.00'(S)(R2)

175.00'(S)(R2)

175.00'(S)(R2)

175.00'(S)(R2)

175.00'(S)(R2)

175.00'(S)(R2)

175.00'(S)(R2)

175.00'(S)(R2)

175.00'(S)(R2)

175.00'(S)(R2)

175.00'(S)(R2)

175.00'(S)(R2)

175.00'(S)(R2)

175.00'(S)(R2)

175.00'(S)(R2)

175.00'(S)(R2)

175.00'(S)(R2)

175.00'(S)(R2)

175.00'(S)(R2)

175.00'(S)(R2)

175.00'(S)(R2)

175.00'(S)(R2)

175.00'(S)(R2)

175.00'(S)(R2)

175.00'(S)(R2)

175.00'(S)(R2)

175.00'(S)(R2)

175.00'(S)(R2)

175.00'(S)(R2)

175.00'(S)(R2)

175.00'(S)(R2)

175.00'(S)(R2)

175.00'(S)(R2)

175.00'(S)(R2)

175.00'(S)(R2)

175.00'(S)(R2)

175.00'(S)(R2)

175.00'(S)(R2)

175.00'(S)(R2)

175.00'(S)(R2)

175.00'(S)(R2)

175.00'(S)(R2)

175.00'(S)(R2)

175.00'(S)(R2)

175.00'(S)(R2)

175.00'(S)(R2)

175.00'(S)(R2)

175.00'(S)(R2)

175.00'(S)(R2)

175.00'(S)(R2)

175.00'(S)(R2)

175.00'(S)(R2)

175.00'(S)(R2)

175.00'(S)(R2)

175.00'(S)(R2)

175.00'(S)(R2)

175.00'(S)(R2)

175.00'(S)(R2)

175.00'(S)(R2)

175.00'(S)(R2)

175.00'(S)(R2)

175.00'(S)(R2)

175.00'(S)(R2)

175.00'(S)(R2)

175.00'(S)(R2)

175.00'(S)(R2)

175.00'(S)(R2)

175.00'(S)(R2)

175.00'(S)(R2)

175.00'(S)(R2)

175.00'(S)(R2)

175.00'(S)(R2)

175.00'(S)(R2)

175.00'(S)(R2)

175.00'(S)(R2)

175.00'(S)(R2)

175.00'(S)(R2)

175.00'(S)(R2)

175.00'(S)(R2)

175.00'(S)(R2)

175.00'(S)(R2)

175.00'(S)(R2)

175.00'(S)(R2)

175.00'(S)(R2)

175.00'(S)(R2)

175.00'(S)(R2)

175.00'(S)(R2)

175.00'(S)(R2)

175.00'(S)(R2)

175.00'(S)(R2)

175.00'(S)(R2)

175.00'(S)(R2)

175.00'(S)(R2)

175.00'(S)(R2)

175.00'(S)(R2)

175.00'(S)(R2)

175.00'(S)(R2)

175.00'(S)(R2)

175.00'(S)(R2)

175.00'(S)(R2)

175.00'(S)(R2)

175.00'(S)(R2)

175.00'(S)(R2)

175.00'(S)(R2)

175.00'(S)(R2)

175.00'(S)(R2)

175.00'(S)(R2)

175.00'(S)(R2)

175.00'(S)(R2)

175.00'(S)(R2)

175.00'(S)(R2)

175.00'(S)(R2)

175.00'(S)(R2)

175.00'(S)(R2)

175.00'(S)(R2)

175.00'(S)(R2)

175.00'(S)(R2)

175.00'(S)(R2)

175.00'(S)(R2)

175.00'(S)(R2)

175.00'(S)(R2)

175.00'(S)(R2)

175.00'(S)(R2)

175.00'(S)(R2)

175.00'(S)(R2)

175.00'(S)(R2)

175.00'(S)(R2)

175.00'(S)(R2)

175.00'(S)(R2)

175.00'(S)(R2)

175.00'(S)(R2)

175.00'(S)(R2)

175.00'(S)(R2)

175.00'(S)(R2)

175.00'(S)(R2)

175.00'(S)(R2)

175.00'(S)(R2)

175.00'(S)(R2)

175.00'(S)(R2)

175.00'(S)(R2)

175.00'(S)(R2)

175.00'(S)(R2)

175.00'(S)(R2)

175.00'(S)(R2)

175.00'(S)(R2)

175.00'(S)(R2)

175.00'(S)(R2)

175.00'(S)(R2)

175.00'(S)(R2)

175.00'(S)(R2)

175.00'(S)(R2)

175.00'(S)(R2)

175.00'(S)(R2)

175.00'(S)(R2)

175.00'(S)(R2)

175.00'(S)(R2)

175.00'(S)(R2)

175.00'(S)(R2)

175.00'(S)(R2)

175.00'(S)(R2)

175.00'(S)(R2)

175.00'(S)(R2)

175.00'(S)(R2)

175.00'(S)(R2)

175.00'(S)(R2)