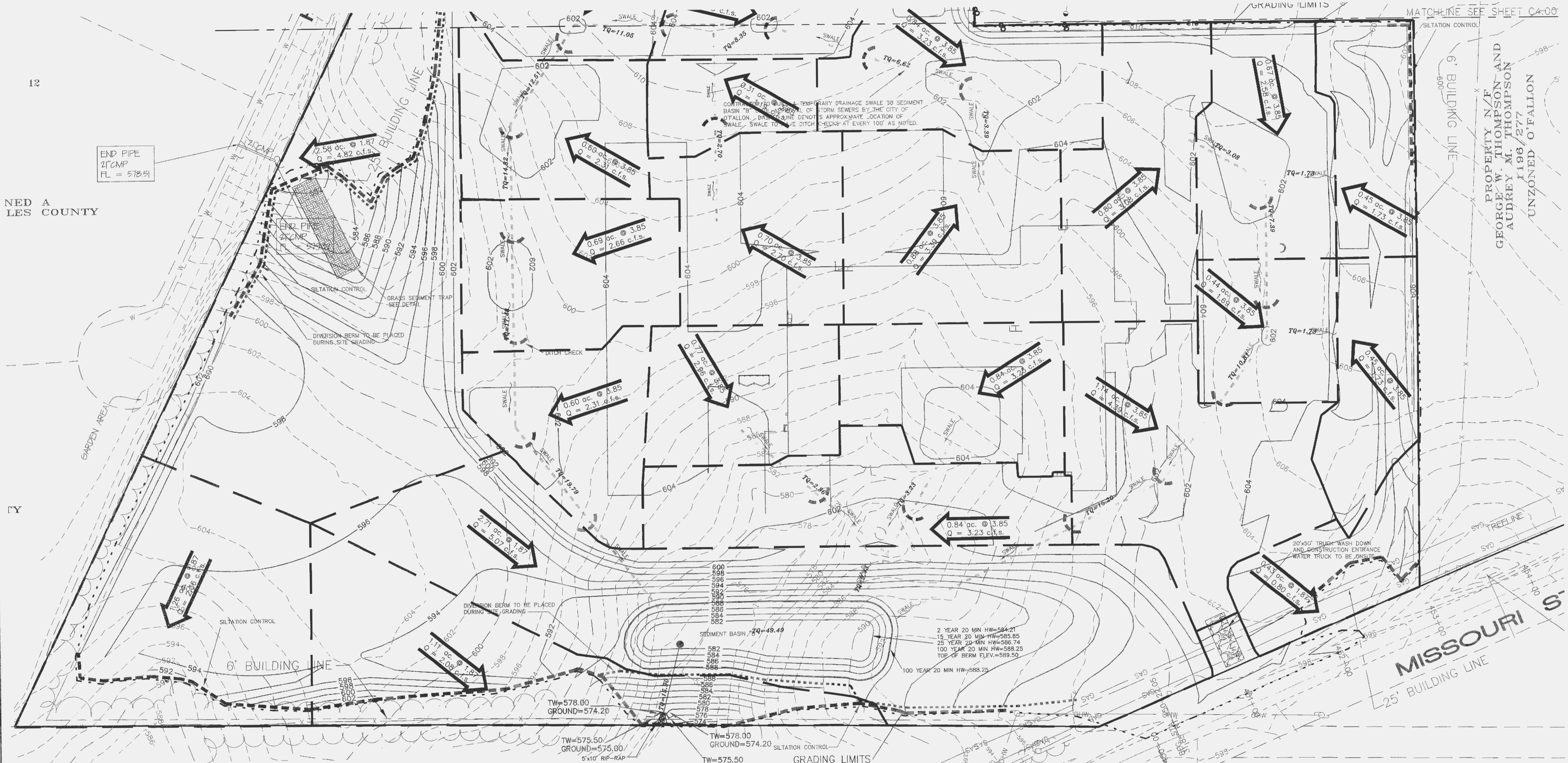


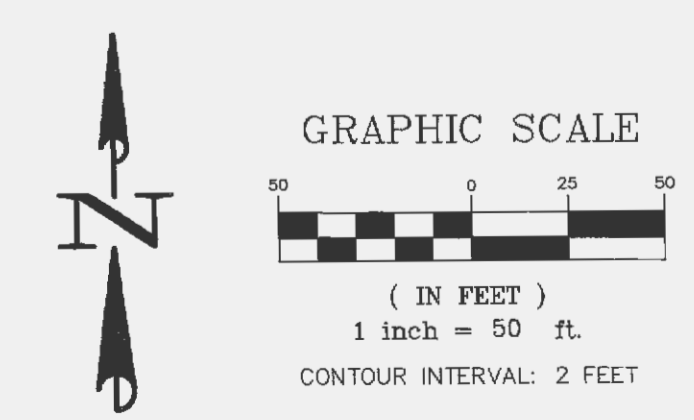
E:\DWG\12495\12495 PLUS\12495 WENTZVILLE SCHOOL - FOXWOOD\CONSTRUCTION\12495GRADING.dwg, DAM-4.10, 7/12/2004 2:38:42 PM, Sta. 36 SWR



PROPERTY N/F
R. CHARLES SCHIERBAUM AND
KATHERINE P. SCHIERBAUM
1123/1682

A St. Charles County Highway Department Special Use Permit must be obtained before any work is allowed to commence on the Right-Of-Way of public road under St. Charles County's control or maintenance.

CITY FILE #6403.02



WENTZVILLE, MISSOURI
ENGINEERING
St. Peters, MO. 6576-4445
636-228-5582
SURVEYING
FAX 636-228-1718

STRUCTURAL
MECH/ELEC/PLUMB
CIVIL
FOOD SERVICE

CONSULTING ENGINEERS:
ABS CONSULTING, INC.
McCLURE ENGINEERING ASSOC.
BAX ENGINEERING
DENNIS G. GLORE, INC.

WENTZVILLE R-IV SCHOOL DISTRICT

HOENER ASSOCIATES, INC.
ARCHITECTS
ST. LOUIS, MISSOURI

ALL DIMENSIONS MUST BE VERIFIED AT BUILDING BEFORE WORK IS EXECUTED. THIS DRAWING IS THE PROPERTY OF THE ARCHITECTS AND SHALL NOT BE COPIED OR DUPLICATED WITHOUT THEIR CONSENT.

job no. 02-060
date issued
6-24-04
date revised
7-12-04 CITY COMMENTS

drawn by SWR
checked by SWR
sheet no.

C4.10

DRAINAGE MAP