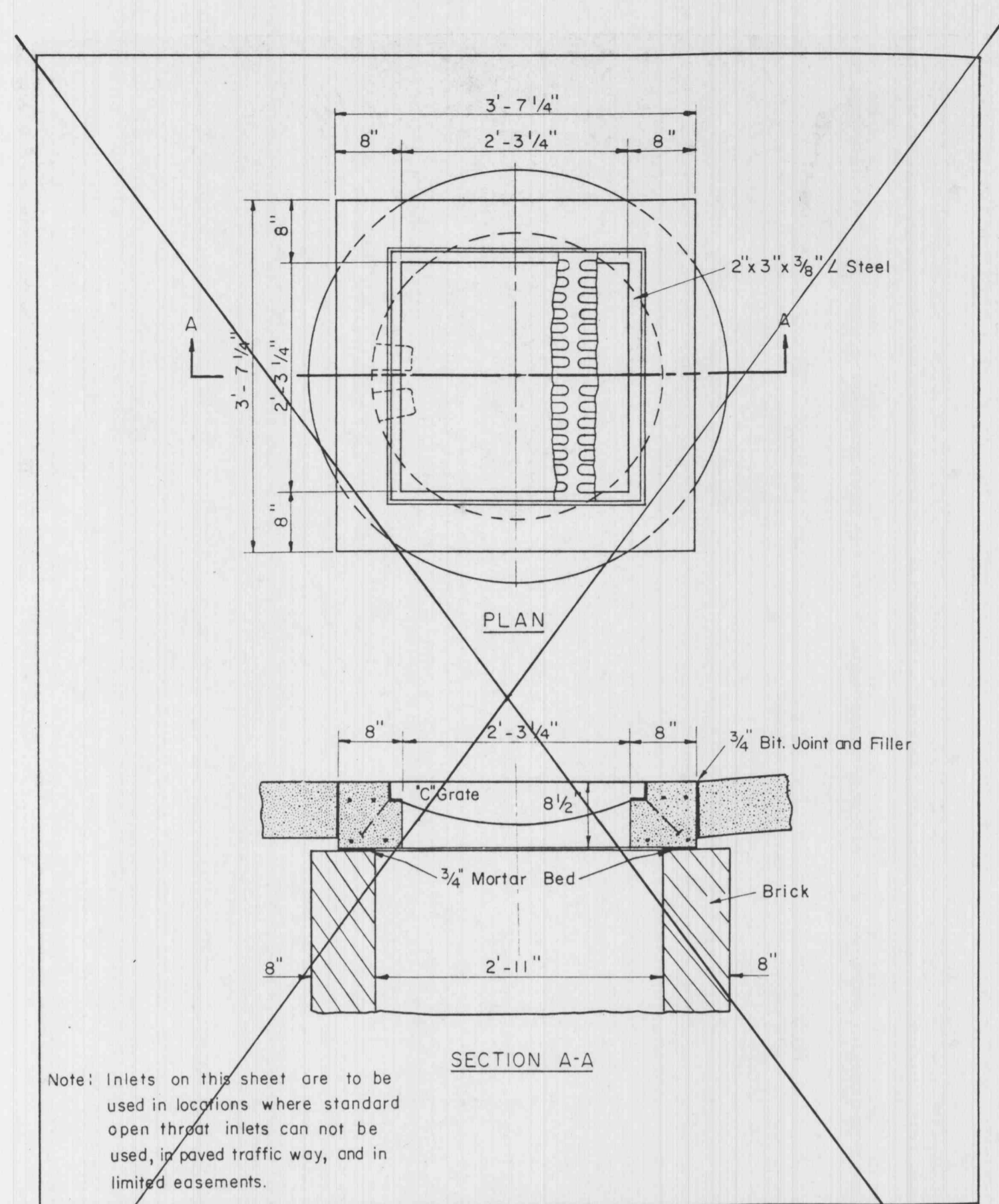
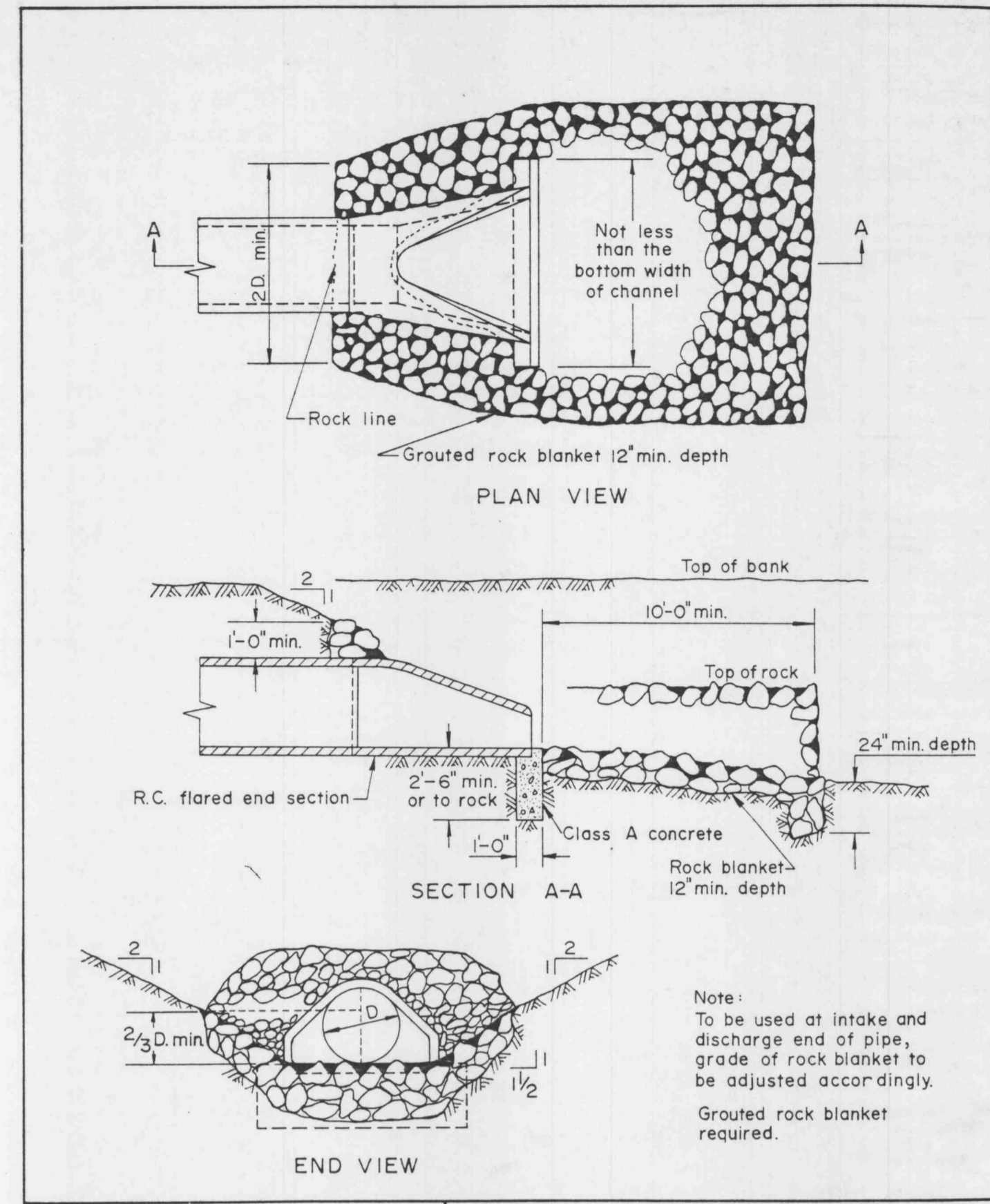


ALTERNATE CONCRETE SINGLE STREET INLET
METROPOLITAN ST. LOUIS SEWER DISTRICT
Standard Details of Sewer Construction
Dr. R.P.P. April 1979 Sheet 22
Ch. J.C.K.



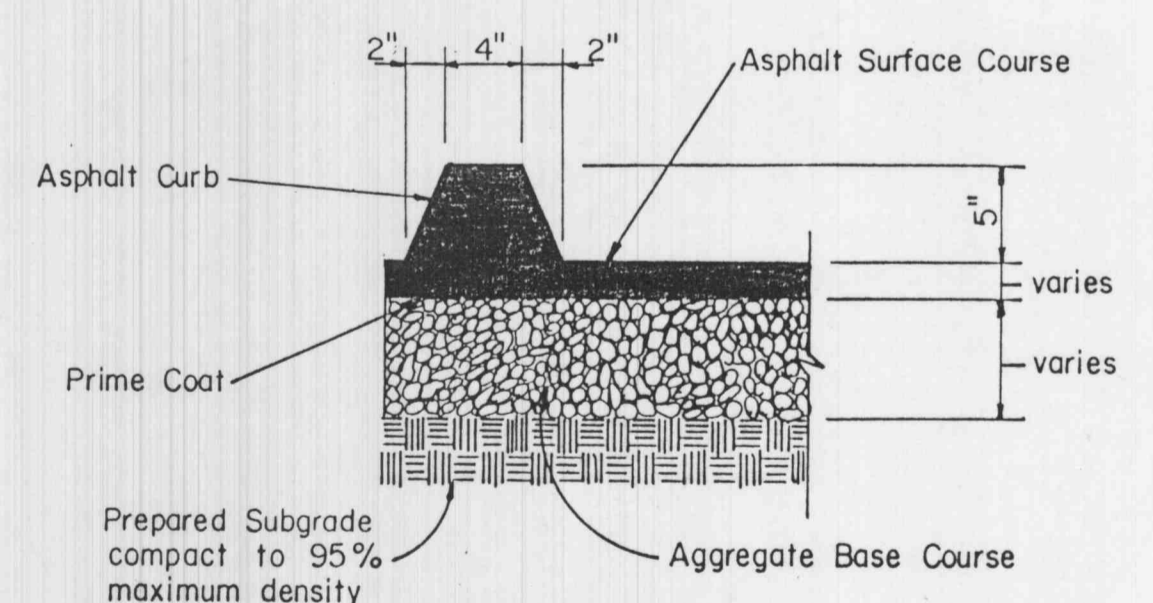
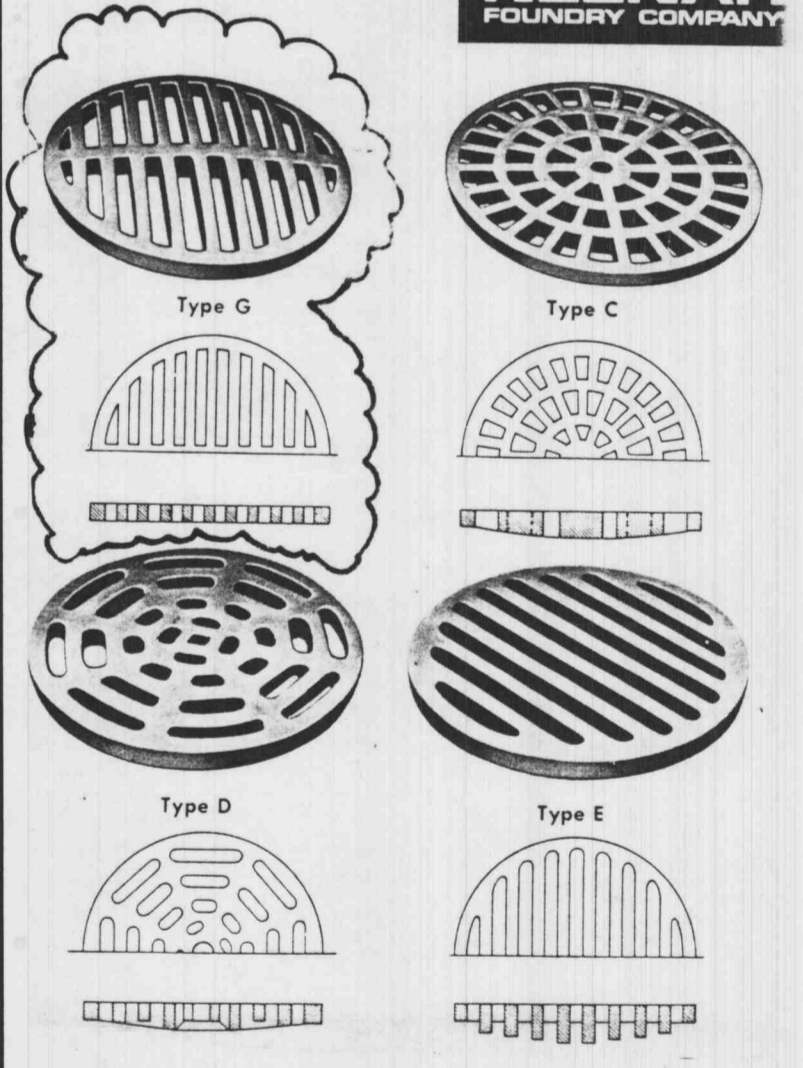
2 GRATE INLET
METROPOLITAN ST LOUIS SEWER DISTRICT
Standard Details of Sewer Construction
Dr. R.P.P. January 69 Sheet 34
Ch. J.H.S.



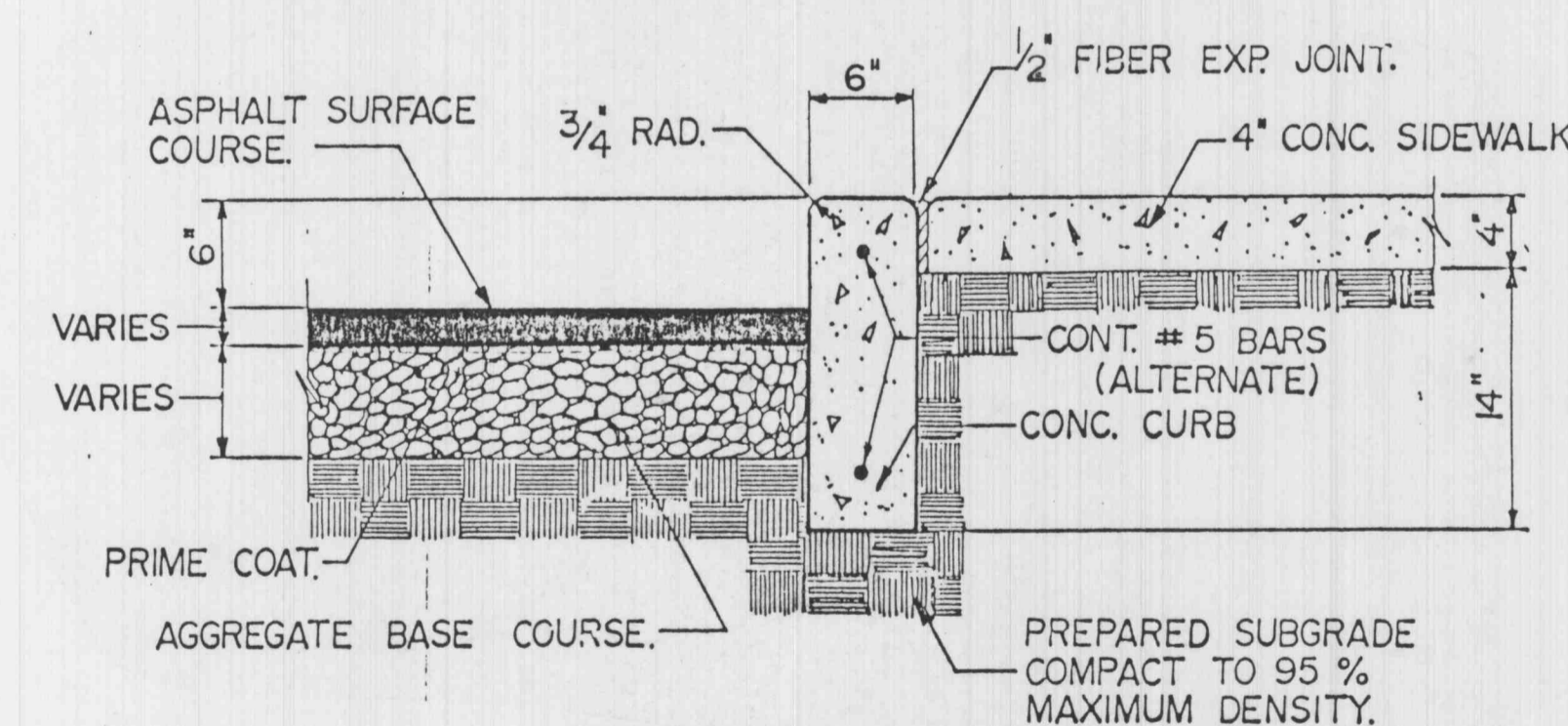
FLARED END SECTION
METROPOLITAN ST LOUIS SEWER DISTRICT
Standard Details of Sewer Construction
Dr. R.N. April 1979 Sheet 48
Ch. J.C.K.

Rev 12.13.86 TCh
Per GBA Comments.
Rev. 12.21.88 TCh
GBA Comment

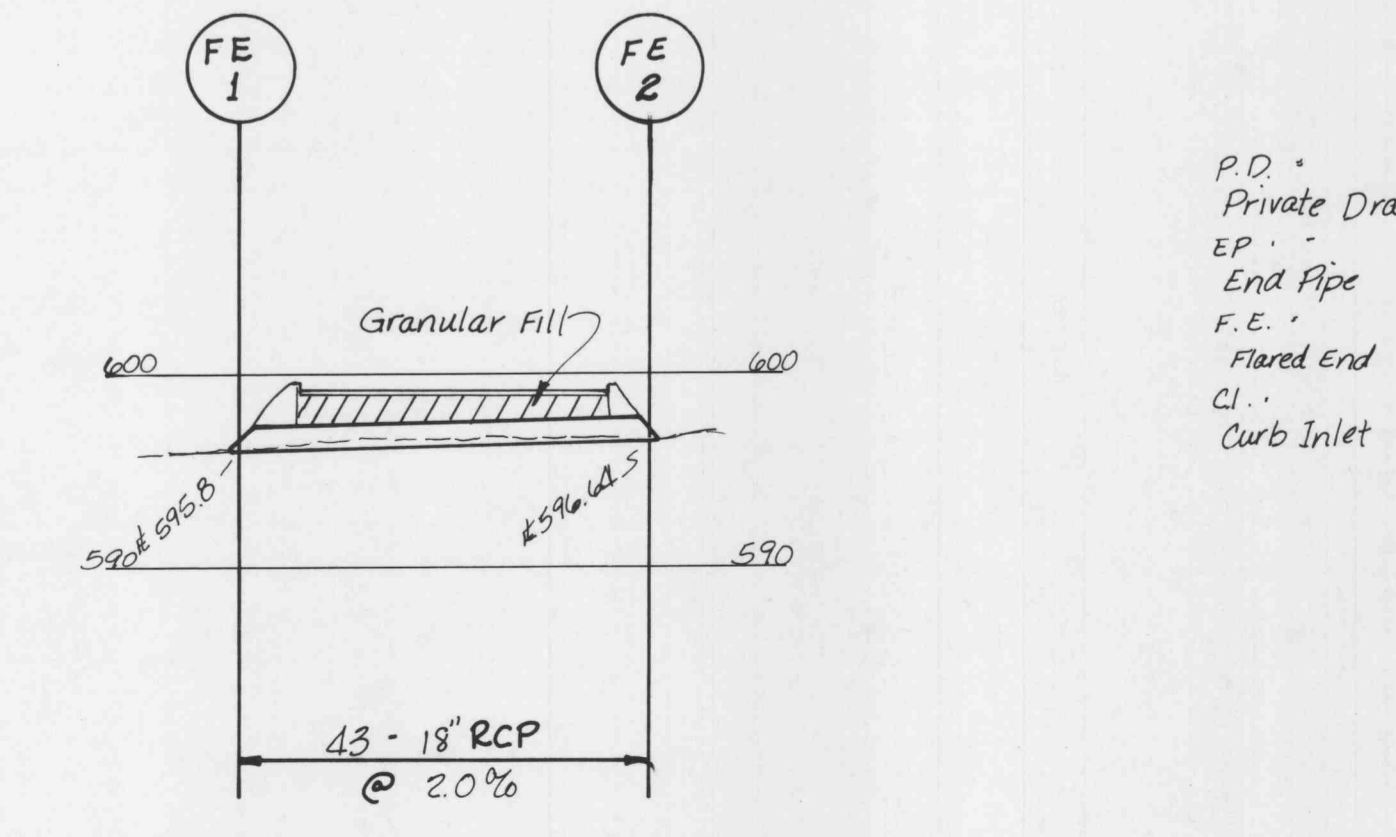
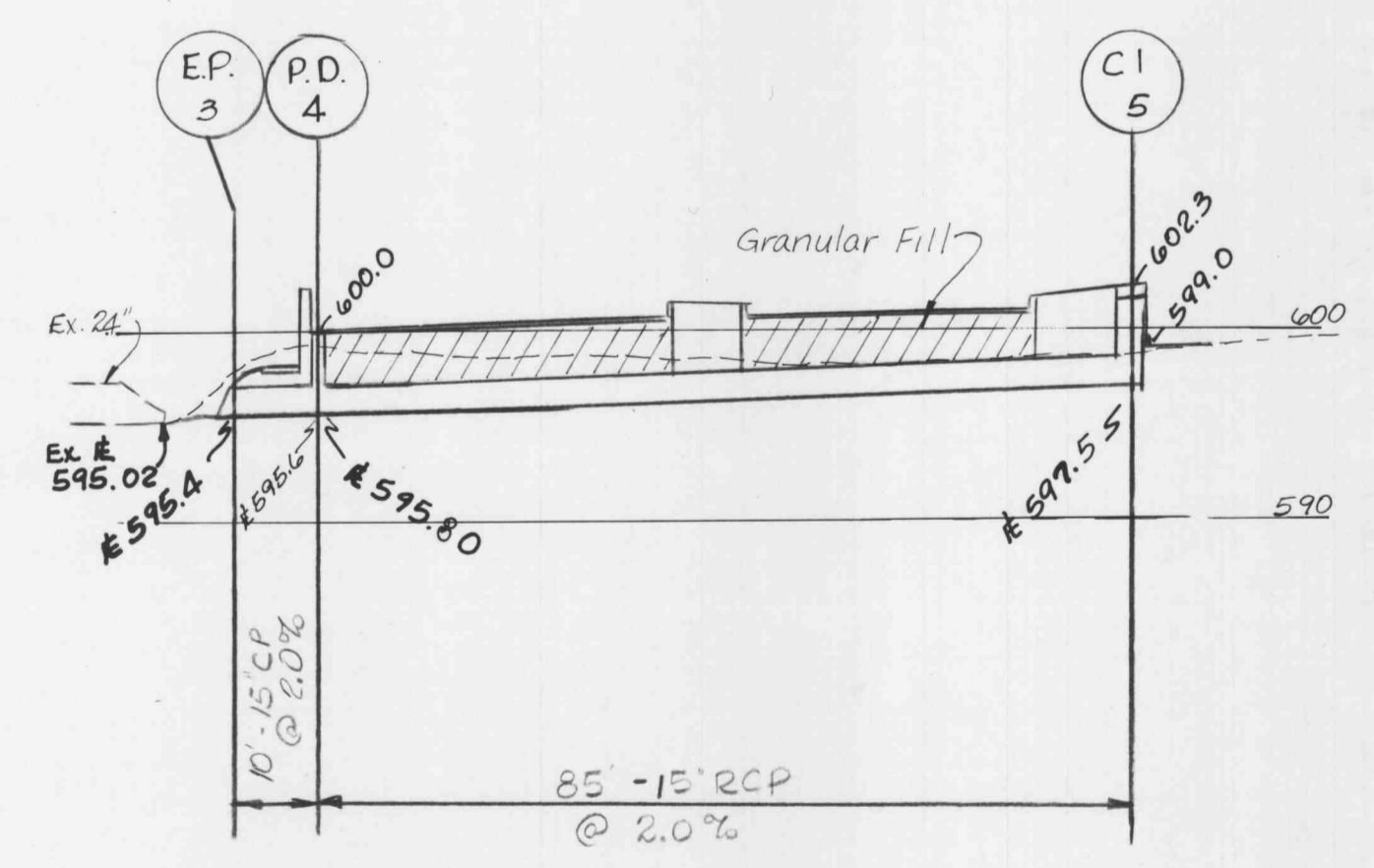
(Recommend type G)



6" ASPHALT CURB



SIDEWALK DETAIL



P.D. - Private Drain
E.P. - End Pipe
F.E. - Flared End
C.I. - Curb Inlet

Section A-A
(Ditch @ NW Corner)
Scale: Vert. 1"=10'
Hori. 1"=20'

$Q = A(1.487/0.025)^{2/3} S^{1/2}$
 $Q = 3(1.487/0.025)(.448)(.126)$
 $Q = 10.1 \text{ cfs (Capacity of existing swale)}$
 $(10.1 \text{ cfs vs } 2.85 \text{ cfs from our site})$
 $A = 3.0$
 $R = .448 (30/100)^{2/3} = .448$
 $S = .126 (1.6\%)$

6" PVC, shall drain parking lot of building into the existing swale.

R-4370 Series Heavy Duty Round Drainage Grates

Any grate listed can be furnished with light weight cast iron angle frame when specified. Frame is of 1/2" metal as shown on page 240. For severe-impacted loading conditions, inquire about these grates in Ductile Iron.

Intermediate diameters and varied thicknesses furnished on request.

Catalog No.	Dimensions in inches				Type	Wt. lbs.
	A	B	G	H		
R-4370-1	6 1/2	1 1/2	1 x 1	1 1/2	C	7
R-4370-2	9 1/2	2 1/2	1 1/2 x 3/4	1 1/2	G	15
R-4370-3	15	3 1/2	1 1/2 x 3/4	1 1/2	E	28 1/2
R-4370-4	15	1 1/2	1/2 x 2 1/2	1 1/2	G	42
R-4370-5	18	1 1/2	1 x 4 1/2	1 1/2	G	68
R-4370-6	19 1/2	1 1/2	3/4 x 5 1/2	1 1/2	G	65
R-4370-7	20	1 1/2	2 x 2	1	G	75
R-4370-8	21	1 1/2	3/4 x 19 1/2	1 1/2	E	60
R-4370-9	22	1 1/2	1 1/2	1	C	76
R-4370-10	22	1 1/2	1 1/2	1	D	95
R-4370-12	22	1 1/2	1 1/2 x 5	1	F	120
R-4370-13	22	1 1/2	2 x 6	1 1/2	G	70
R-4370-14A	22 1/2	2 1/2	1 1/2	1	G	115
R-4370-15	22 1/2	1 1/2	1 1/2	1	D	110
R-4370-17	22 1/2	1 1/2	1 1/2	1	D	125
R-4370-18	22 1/2	1 1/2	1 1/2	1 1/2	E	115 1/2
R-4370-21	23	1 1/2	1 1/2	1	D	115
R-4370-22	23	1 1/2	1 1/2	1 1/2	D	133
R-4370-23	24	1 1/2	2 1/2 x 2 1/2	1 1/2	Special	116
R-4370-25	29	2	1 1/2	1	G	215
R-4370-26	33	2	1 1/2	1	G	220
R-4370-27A	38	1 1/2	1 1/2	1	G	390

Not recommended for bicycle traffic. For safety standards see pages 94 to 96.