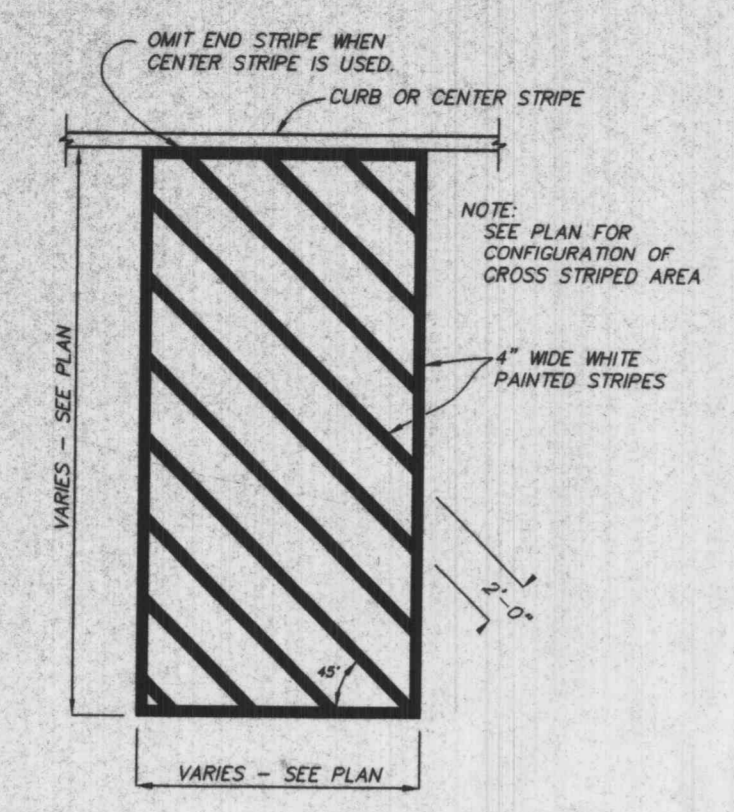
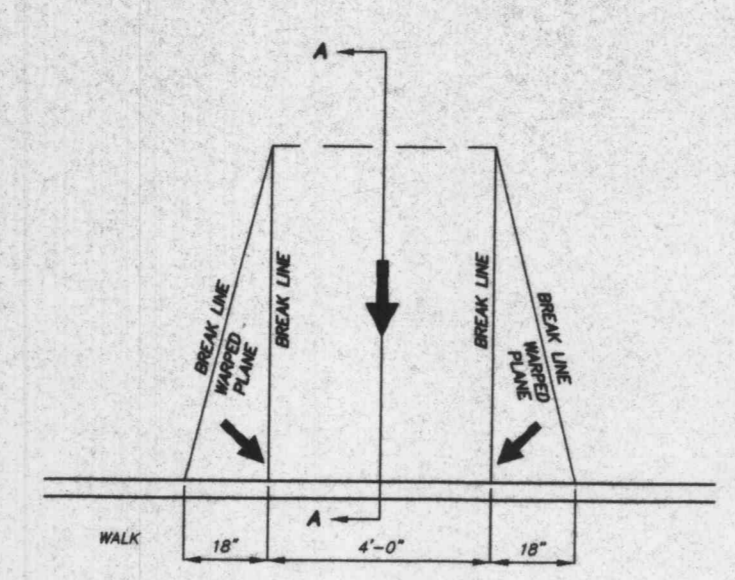


HANDICAPPED PARKING MARKING
N.T.S.

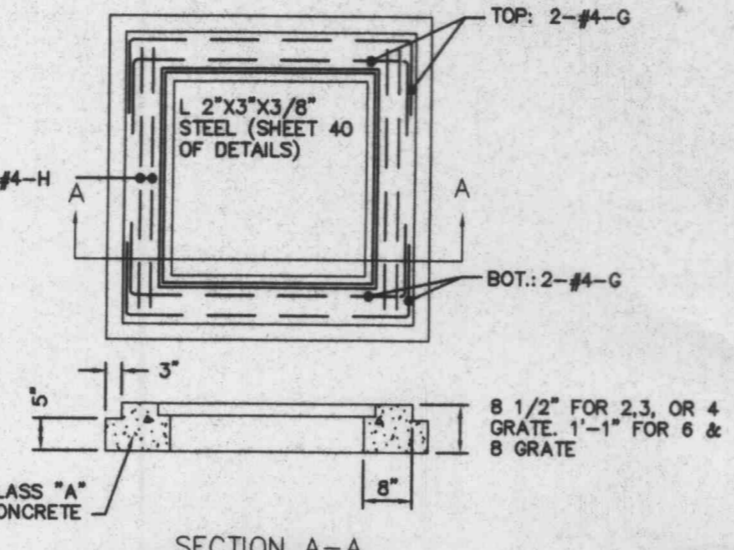


CROSS STRIPING DETAIL
N.T.S.

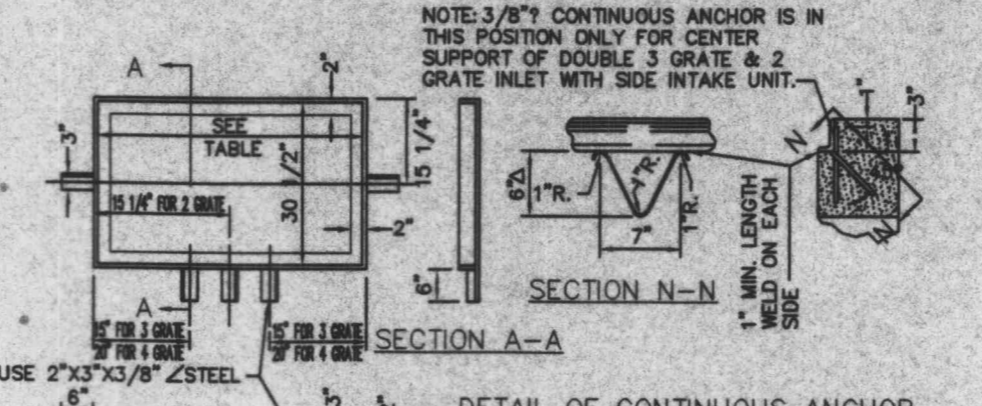


STRAIGHT CURB HANDICAPPED RAMP DETAIL
N.T.S.

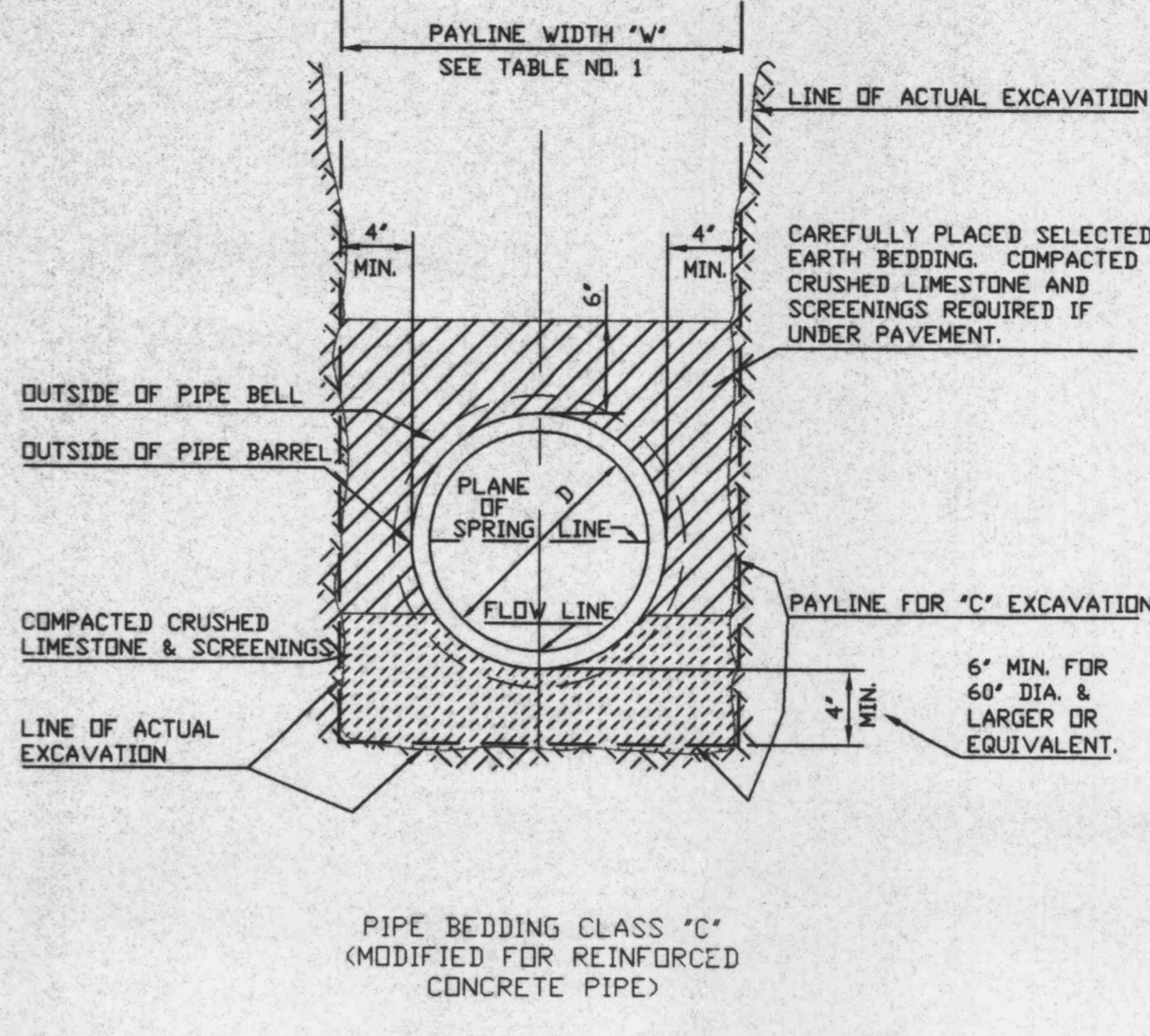
CALL	USE	Q	STRAIGHT BARS
Q-1	2.3 OR 4 GRATE	3'-4"	
Q-2	8 & 8 GRATE	8'-10"	
H-2	2 GRATE	3'-0"	
H-3	3 & 8 GRATE	4'-0"	
H-4	4 & 8 GRATE	6'-0"	



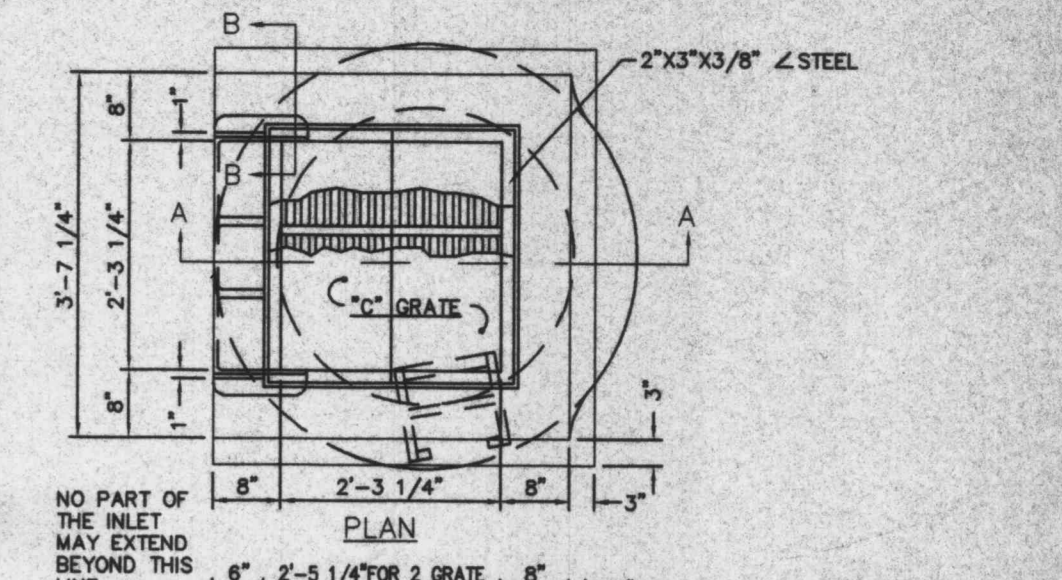
STEEL REQUIREMENTS FOR GRATE INLET SEAT



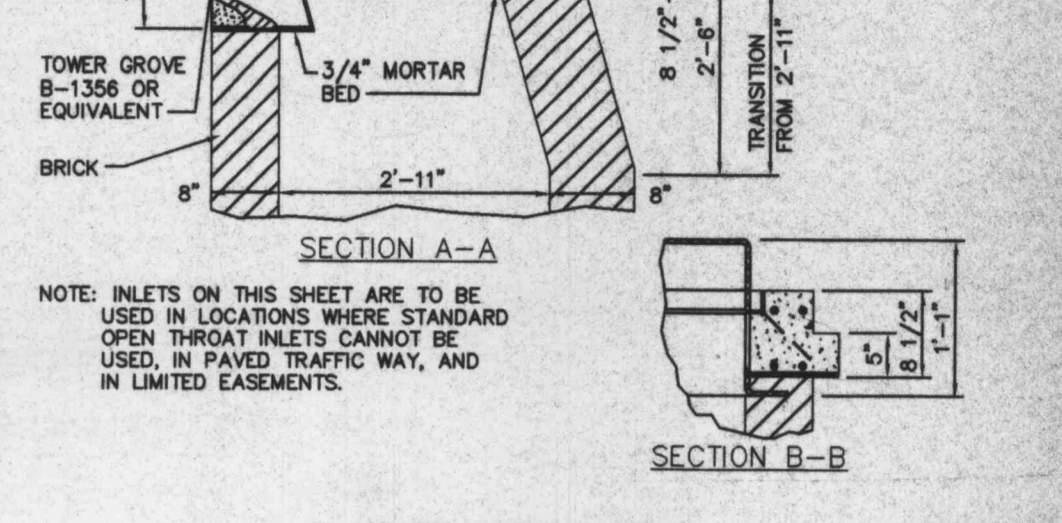
DETAILS OF INLET FRAME AND GRATES



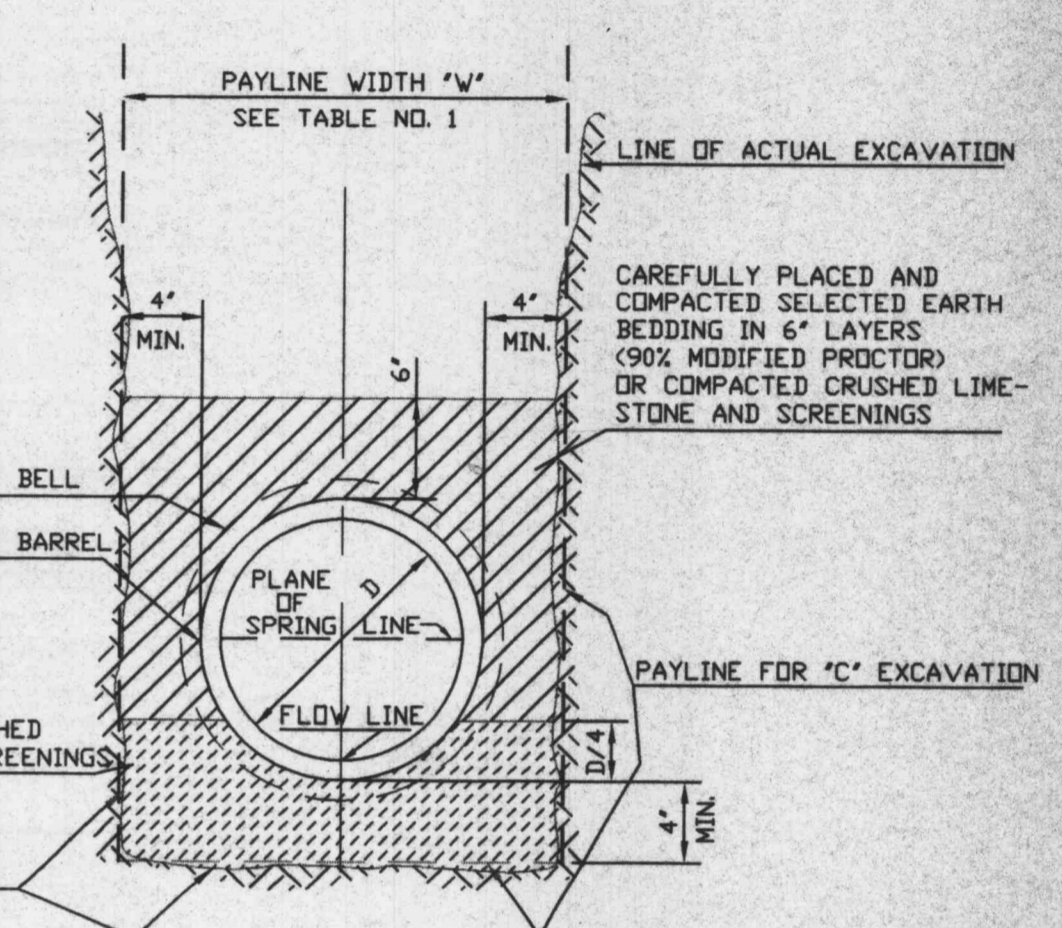
PIPE BEDDING CLASS 'C' (MODIFIED FOR REINFORCED CONCRETE PIPE)



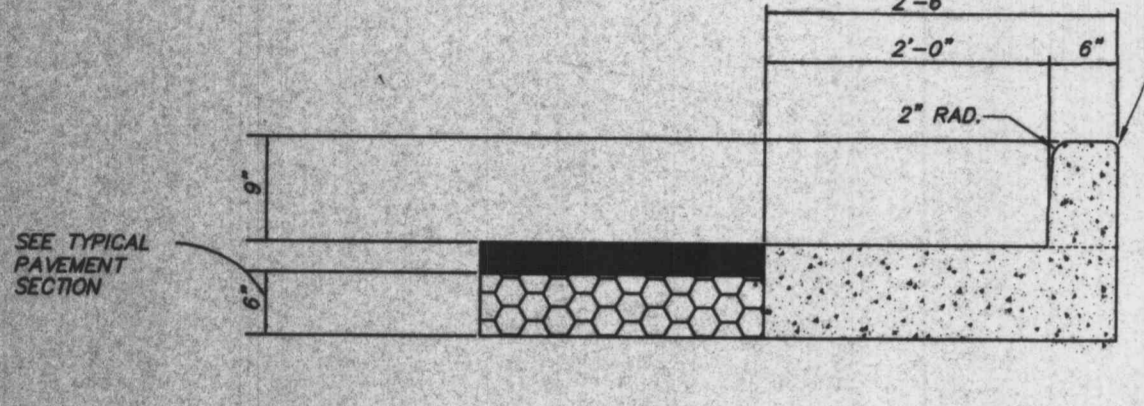
2 GRATE INLET WITH SIDE INTAKE UNIT



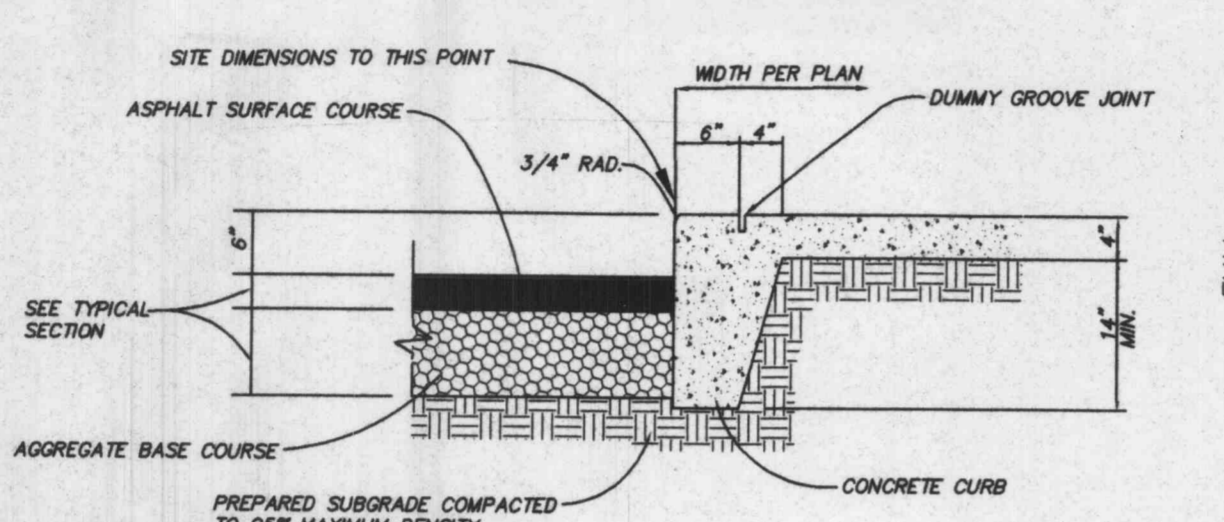
SECTION A-A



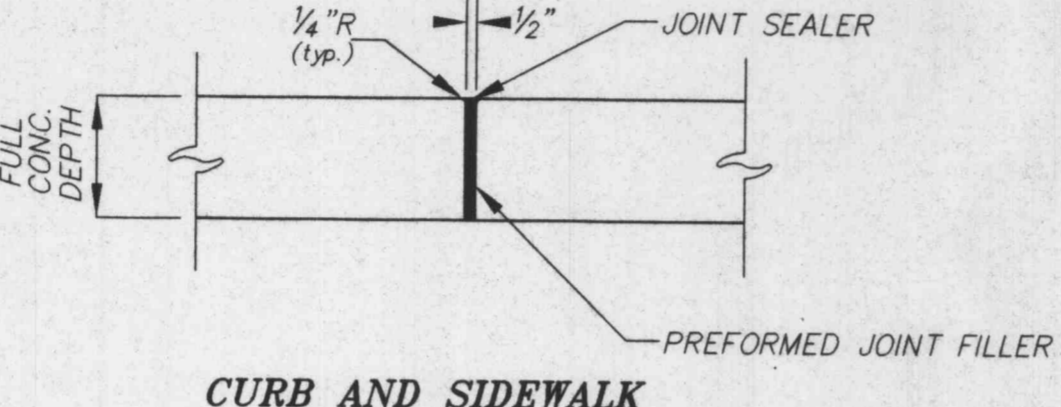
SECTION B-B



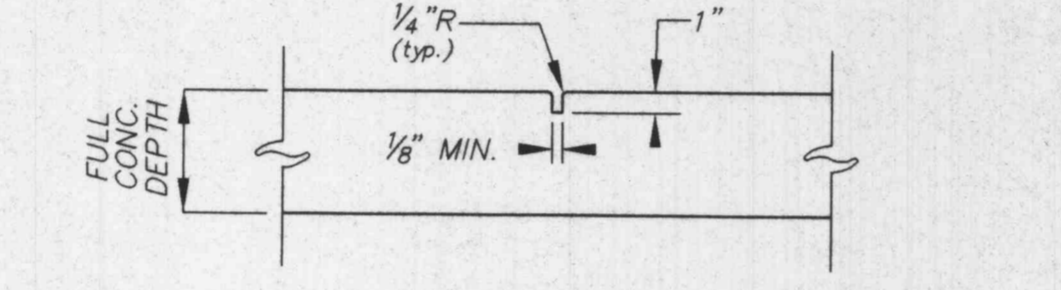
9" VERTICAL CURB AND CUTTER (2'-6" WIDE)
N.T.S.



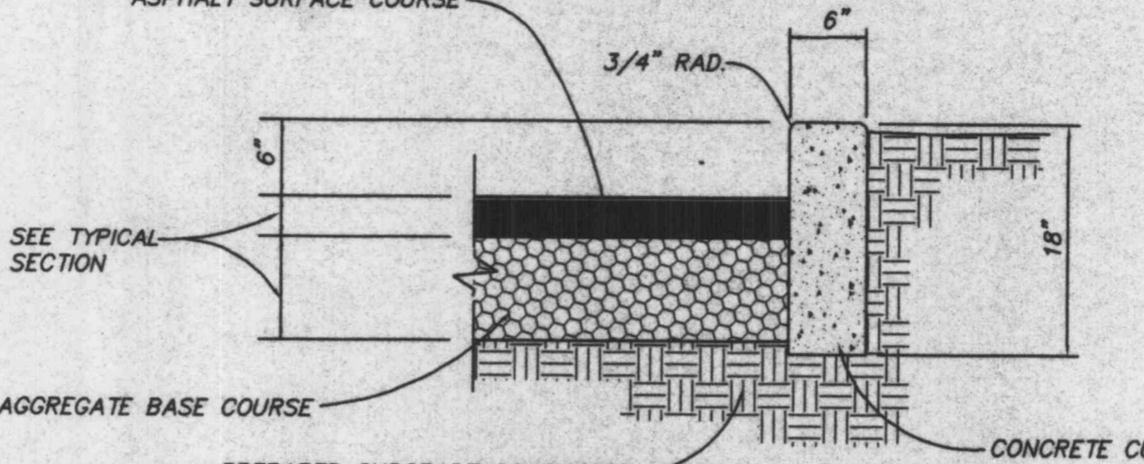
6" CONCRETE CURB WITH SIDEWALK
N.T.S.



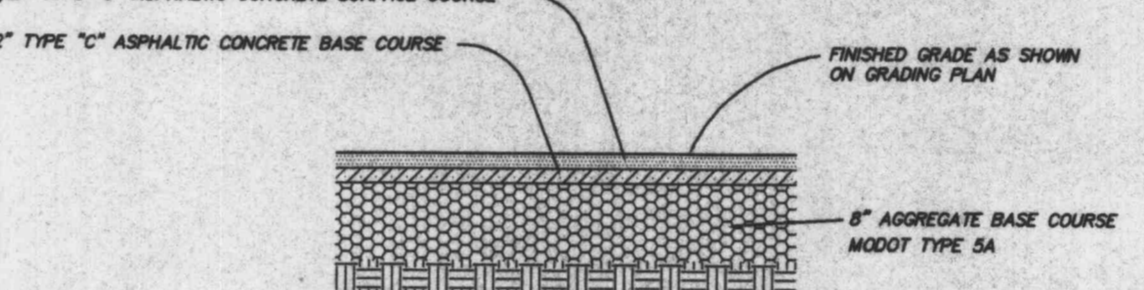
CURB AND SIDEWALK EXPANSION JOINT
N.T.S.



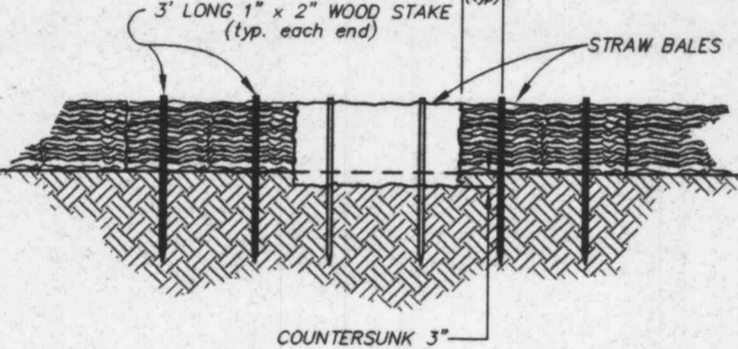
CURB AND SIDEWALK CONTRACTION JOINT
N.T.S.



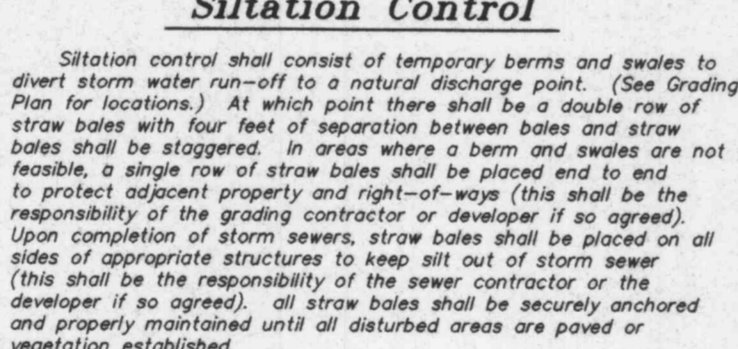
6" VERTICAL CONCRETE CURB
N.T.S.



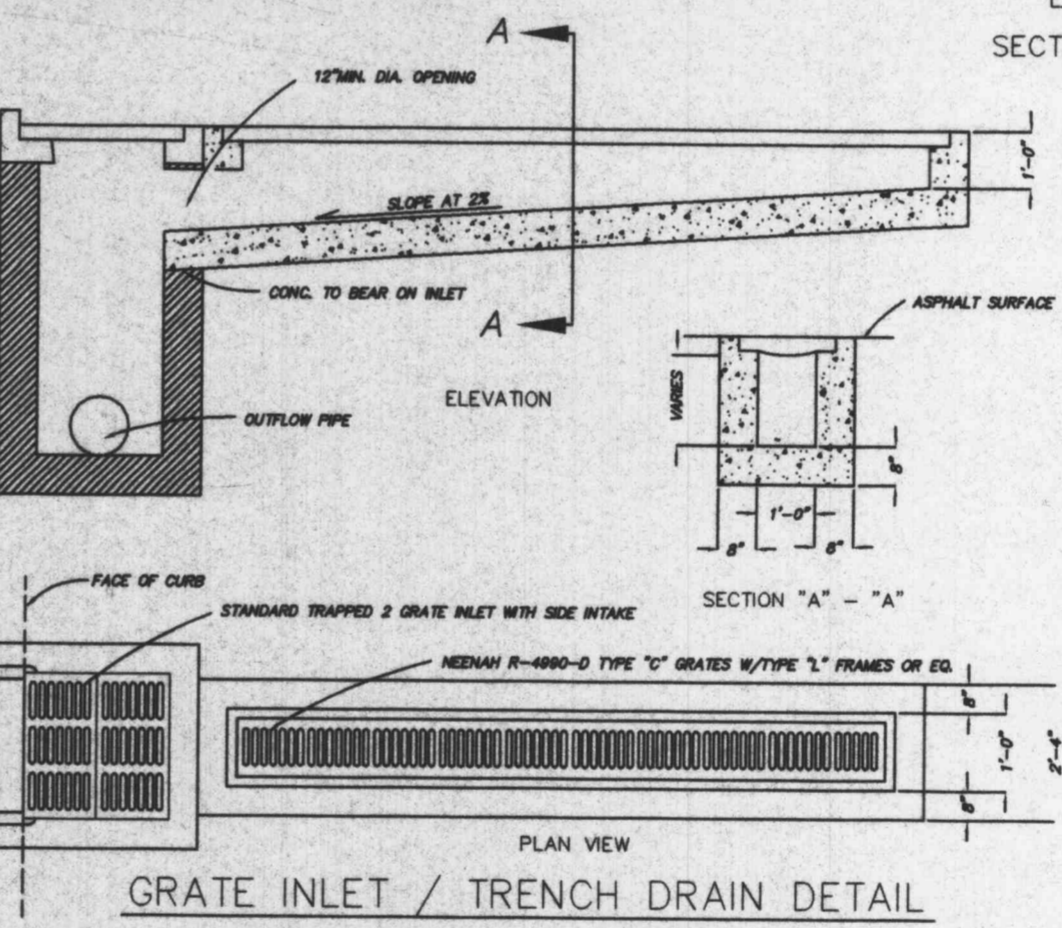
ASPHALT PAVEMENT SECTION
N.T.S.



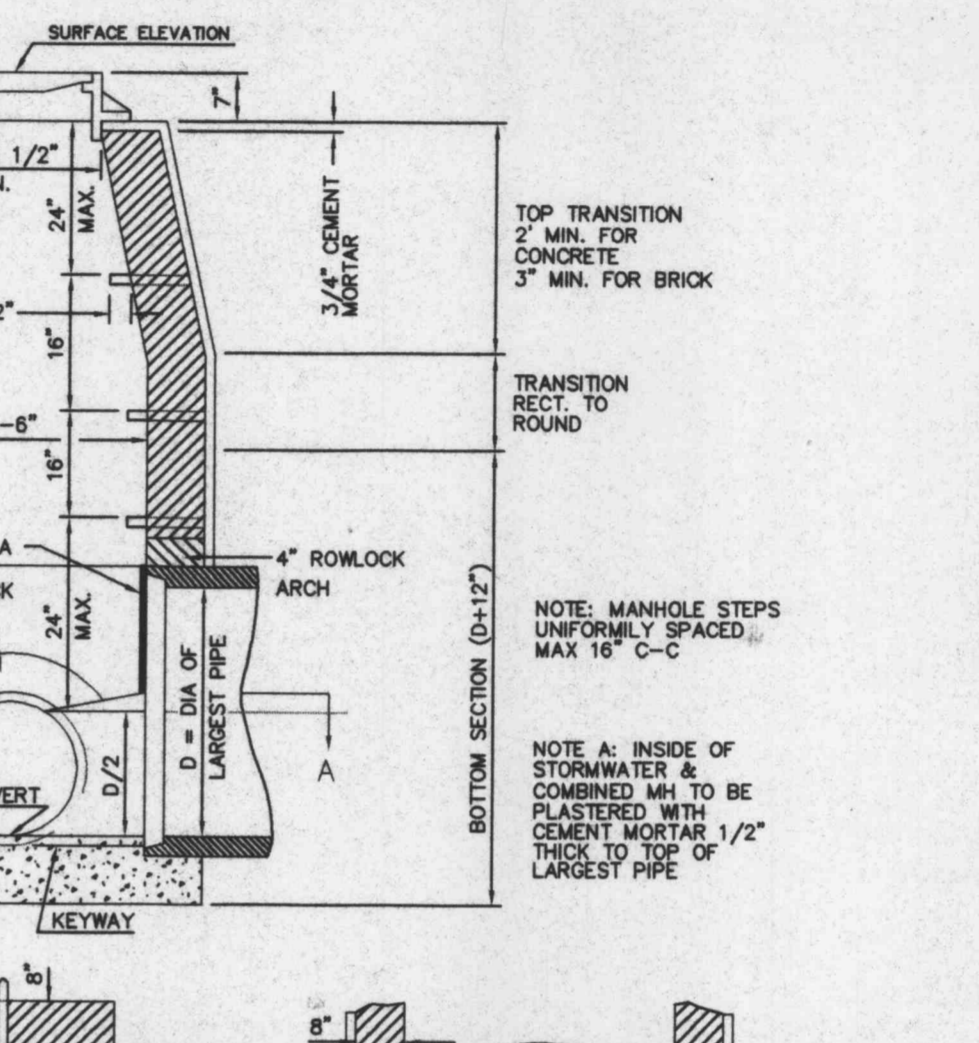
STAKED BALE DETAIL
N.T.S.



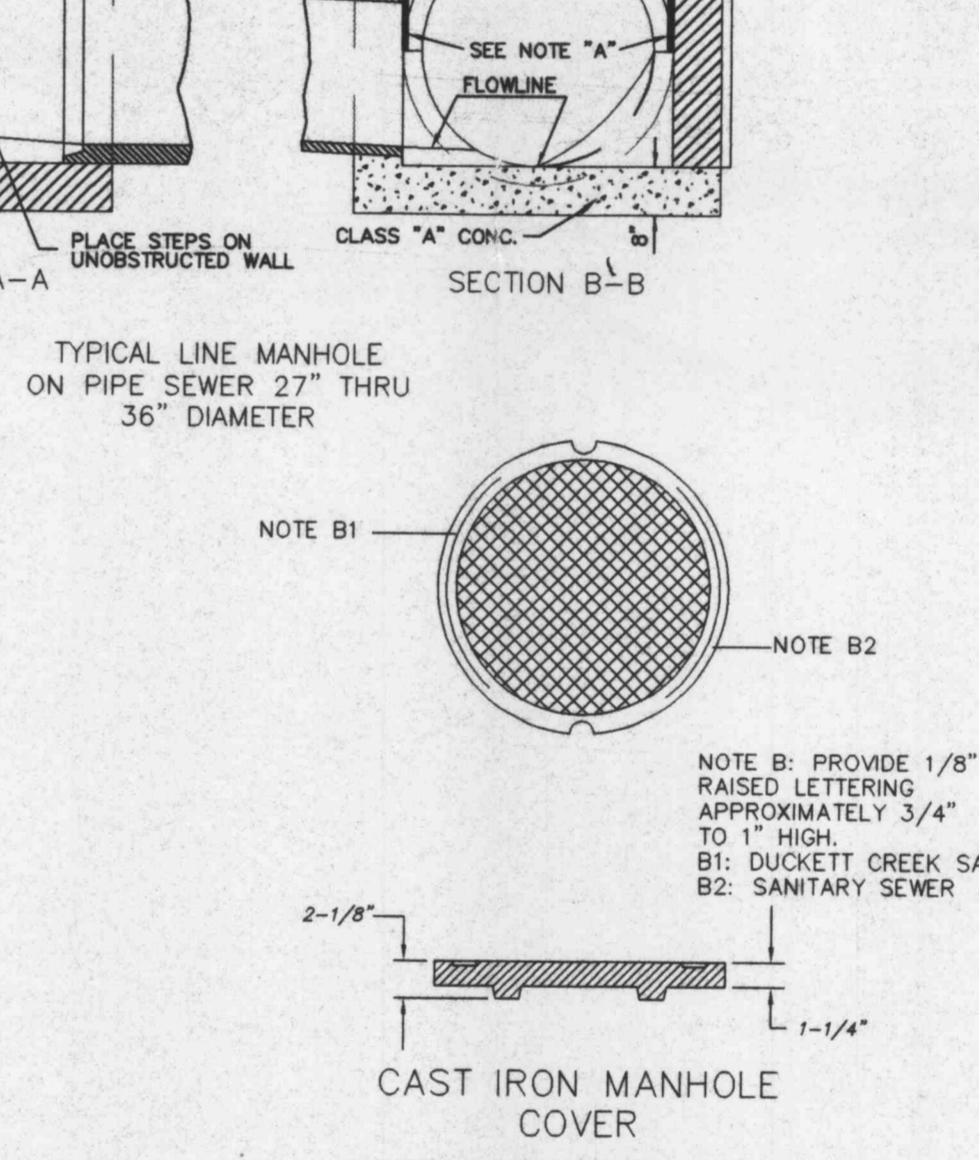
CONCRETE PAVEMENT SECTION
N.T.S.



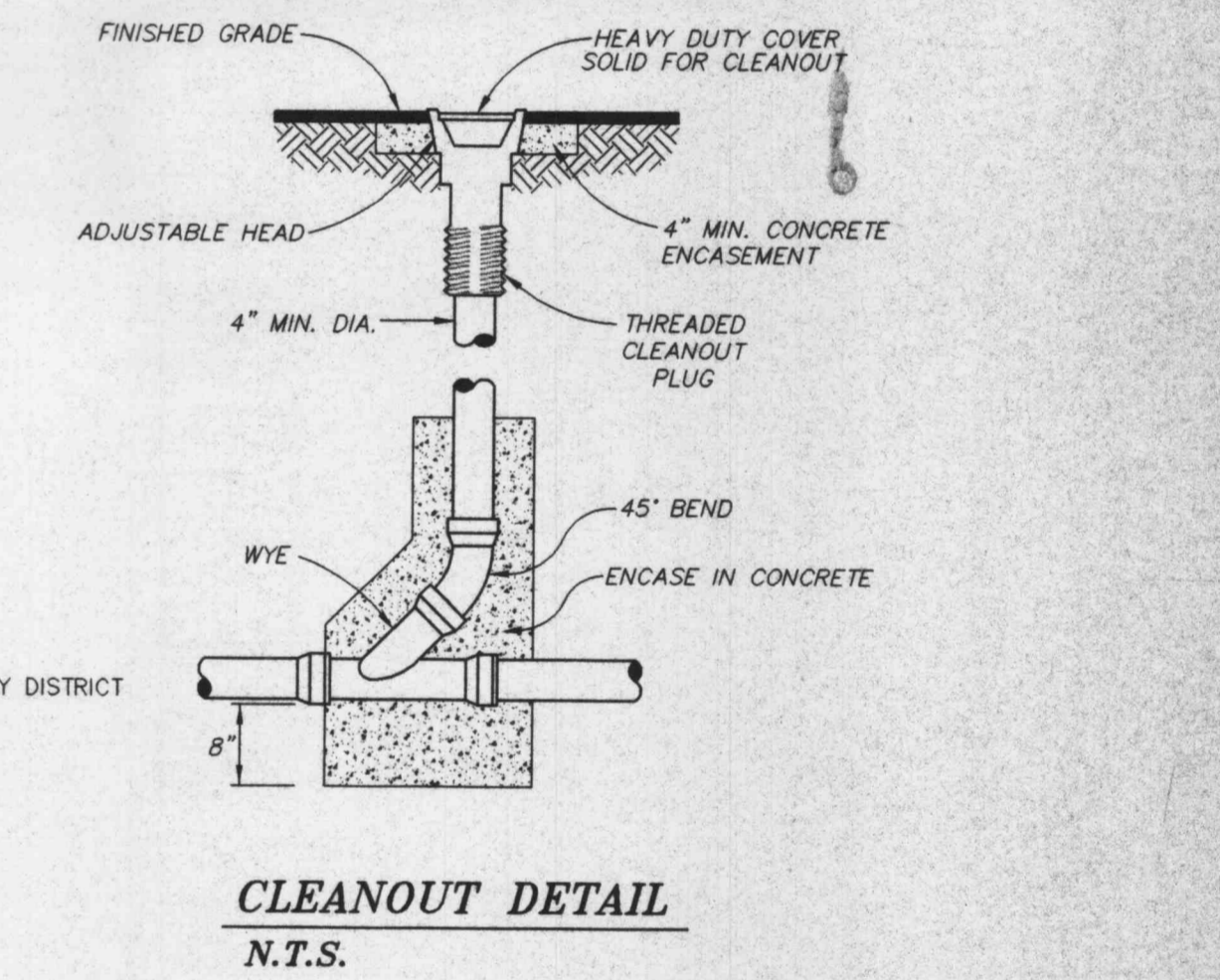
GRATE INLET / TRENCH DRAIN DETAIL
N.T.S.



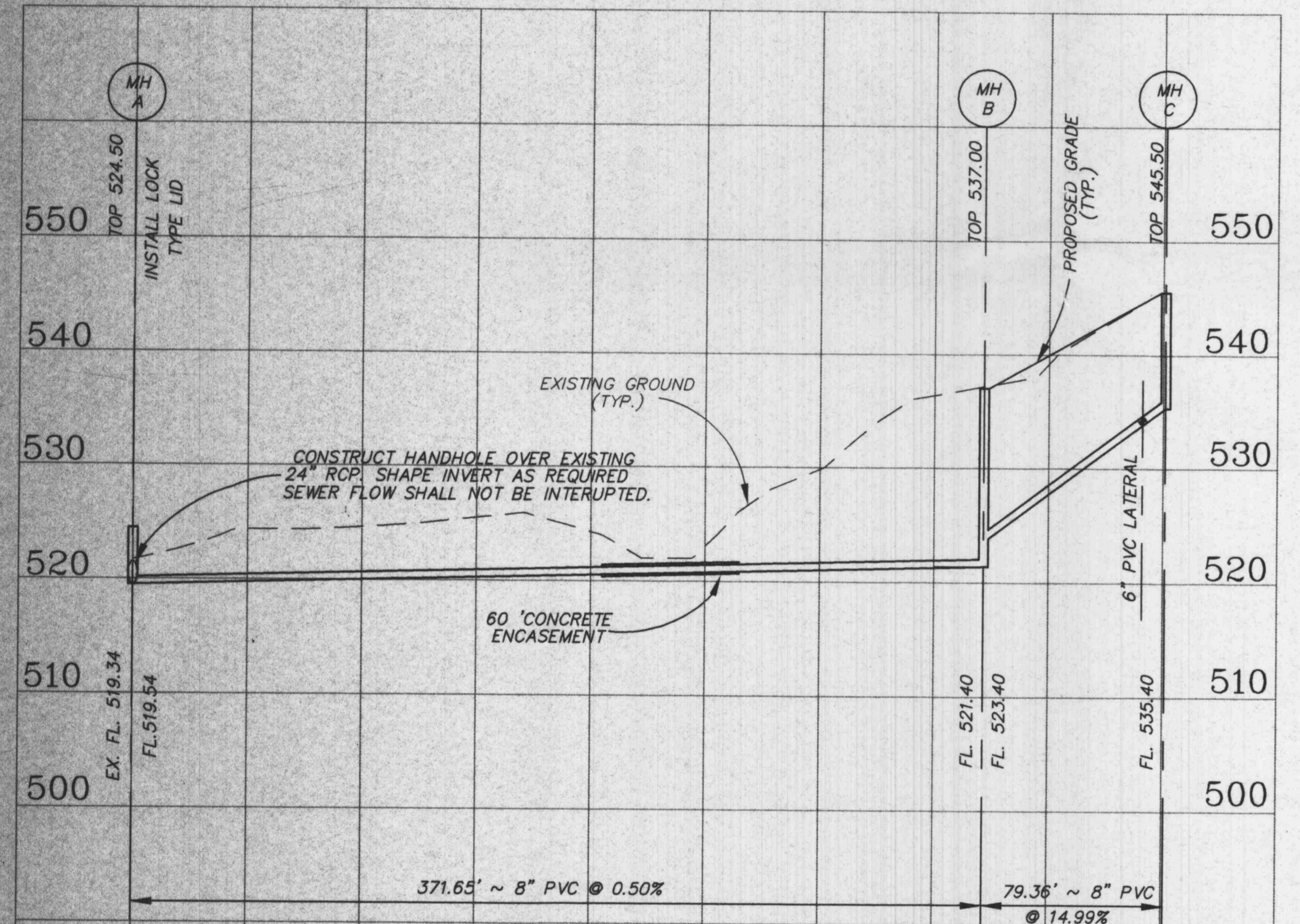
TYPICAL LINE MANHOLE ON PIPE SEWER 27" THRU 36" DIAMETER



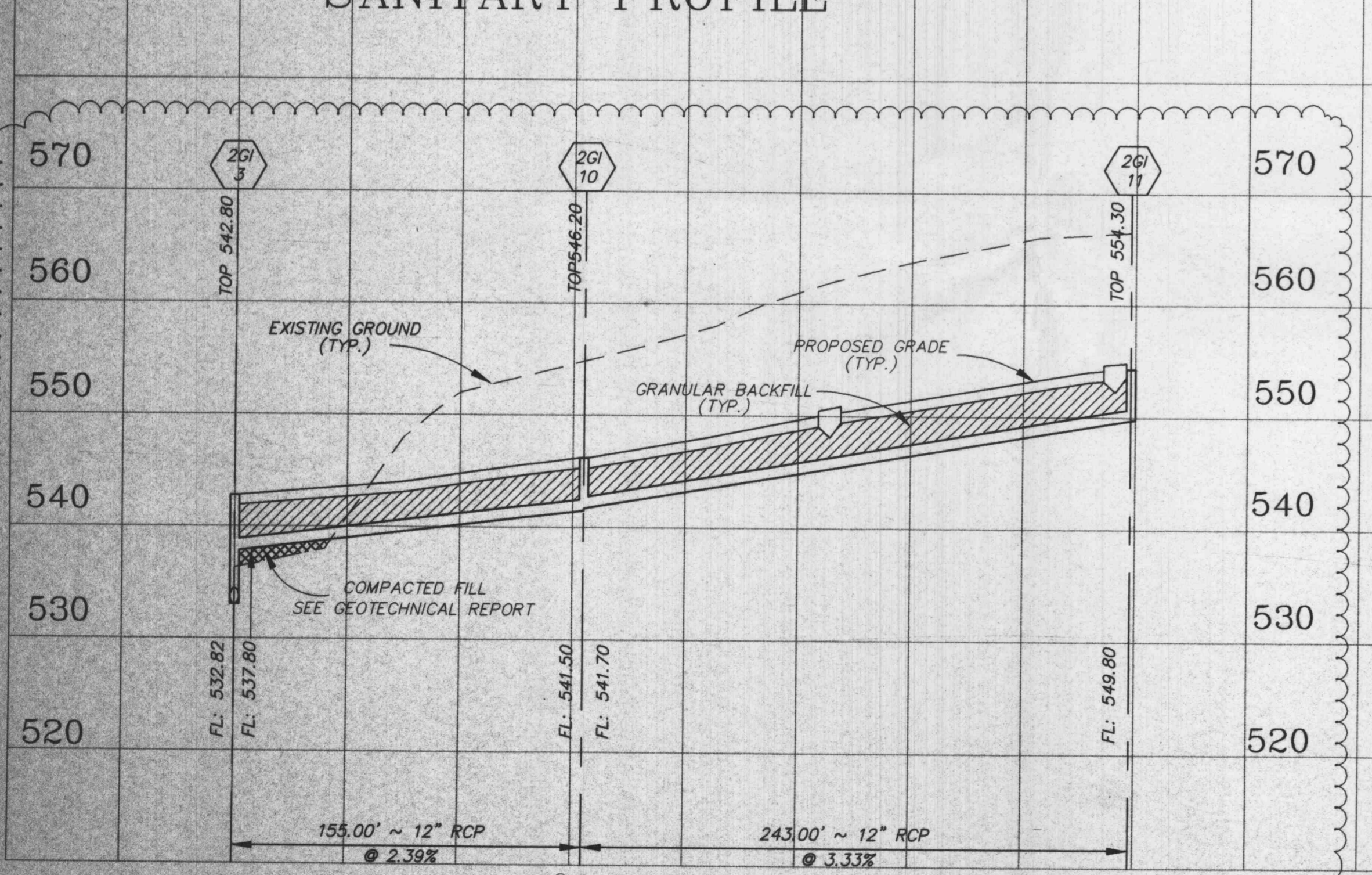
CAST IRON MANHOLE COVER
DEETER FOUNDRY, INC. # 1275



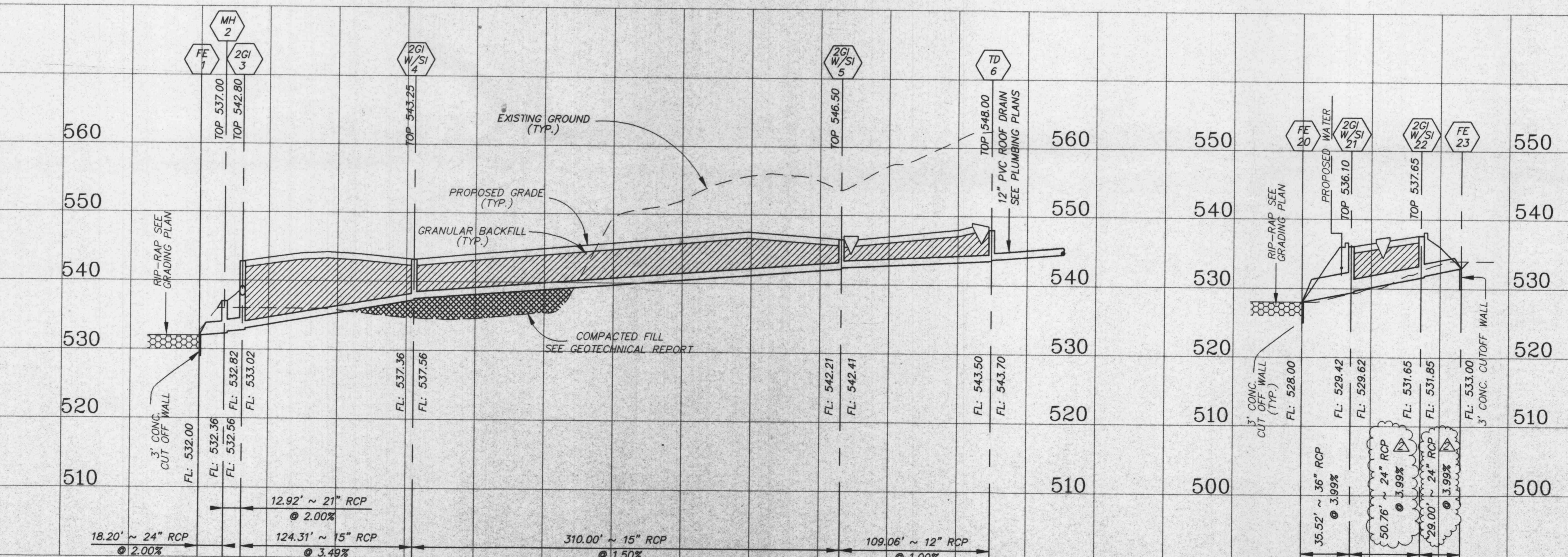
CLEANOUT DETAIL
N.T.S.



SANITARY PROFILE



STORM PROFILE



STORM PROFILE

STORM PROFILE

SCALE: 1" = 50' HORIZ.
1" = 10' VERT.

3-1-99, ADDED PROFILES FROM 2G-3 TO 2G-11, REVISED PIPE SIZE FROM 2G1 W/SI-21 TO FE-23
1-28-99, REVISED PER HOK COMMENTS

Copyright 1998 by Pickett, Roy & Silver Inc.

CONFIDENTIAL PROPRIETARY MATERIAL
The use, reproduction and sales rights of this drawing are reserved by Pickett, Roy & Silver Inc.

PICKETT ROY & SILVER

Civil Engineers
Planners
Land Surveyors

333 Mid Rivers Mall Dr.
St. Peters, MO 63376
381-1211 FAX 381-1914

GLA
STORM & SANITARY SEWER
PROFILES AND DETAILS

DRAWN TLM/CELL DATE 12-3-98
DESIGNED R.J.TAYLOR DATE 12-3-98
FIELD PROJECT # 98-501C
BOOK JOB ORDER # DKO

C-4