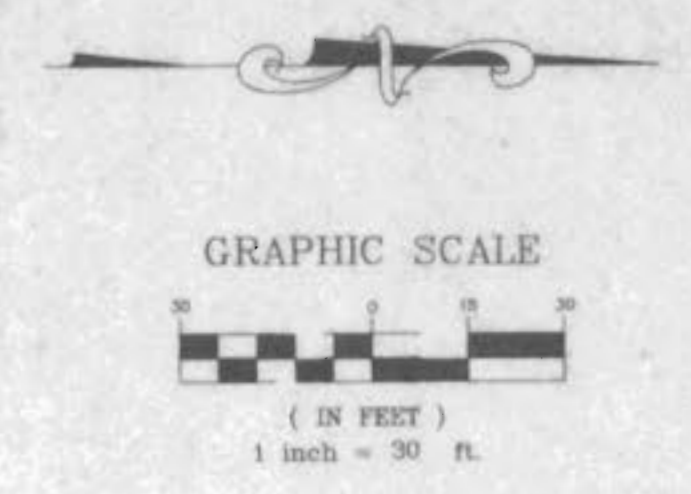
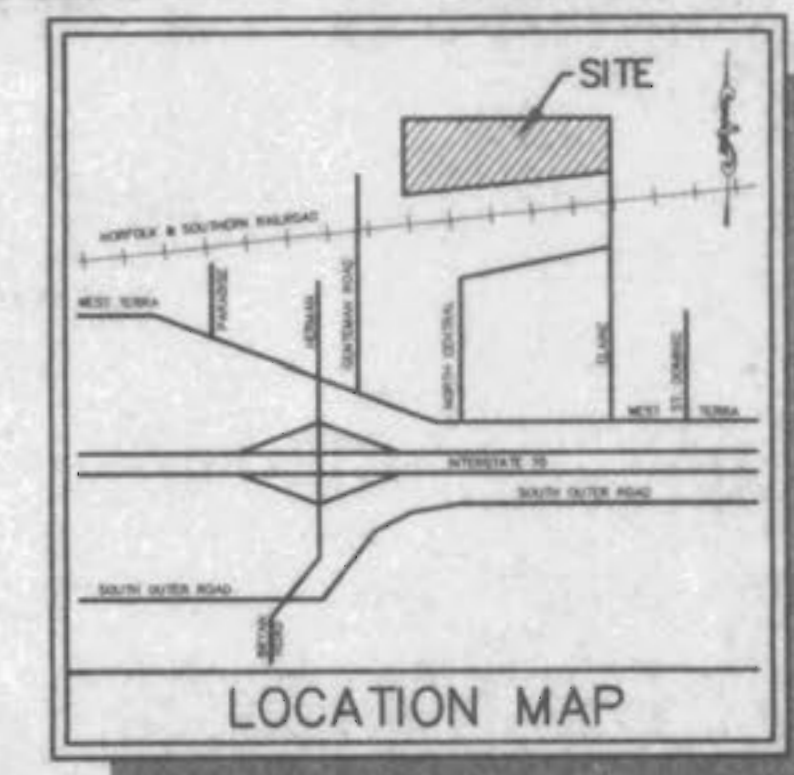
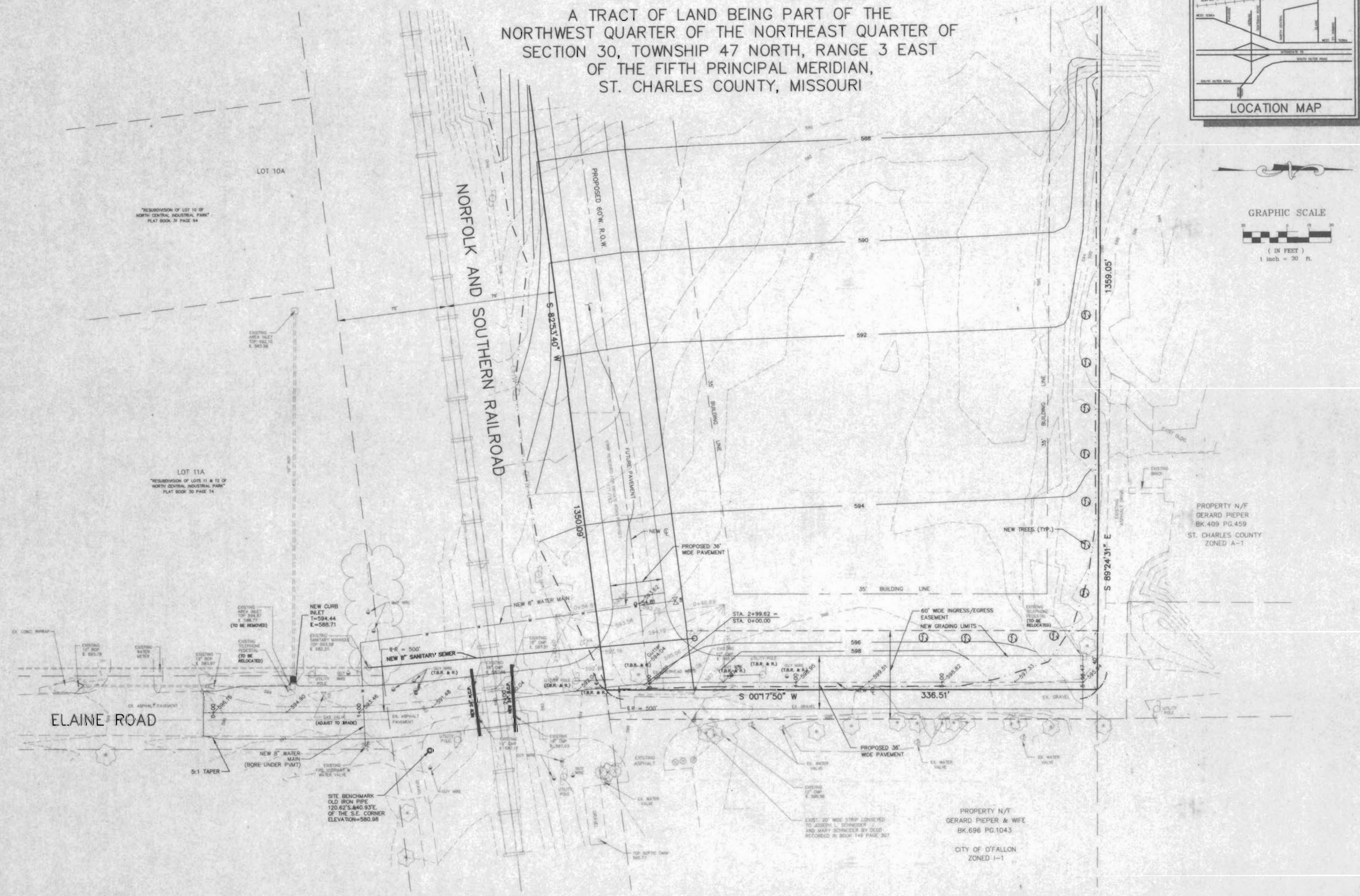


A SITE PLAN FOR G. R. P. FARMS

A TRACT OF LAND BEING PART OF THE
NORTHWEST QUARTER OF THE NORTHEAST QUARTER OF
SECTION 30, TOWNSHIP 47 NORTH, RANGE 3 EAST
OF THE FIFTH PRINCIPAL MERIDIAN,
ST. CHARLES COUNTY, MISSOURI



PREPARED FOR: **G.R.P. FARMS**
261 ELANE DRIVE
O'FALLON, MO 63366
(314) 240-8262



DISCLAIMER OF RESPONSIBILITY
I hereby specify that the documents intended to be authorized by my seal are limited to this sheet, and I hereby disclaim any responsibility for all other drawings, specifications, estimates, reports or other documents or instruments relating to or intended to be used for any part or parts of the architectural or engineering project or survey.

Copyright 1996
An Engineering Company, Inc.
All Rights Reserved.

REVISIONS

NO.	DATE	DESCRIPTION
10-21-97		PAVEMENT WIDTH

B&T
ENGINEERING
PLANNING
SURVEYING

1052 South Cloverleaf Drive
St. Peters, MO. 63376-6445
314-928-5552
FAX 928-1718

10-21-97
DATE
95-6743
1 OF 4
SHEET OF
6743RR.DWG
FILE NAME
L.S.S.
DRAWN CHECKED