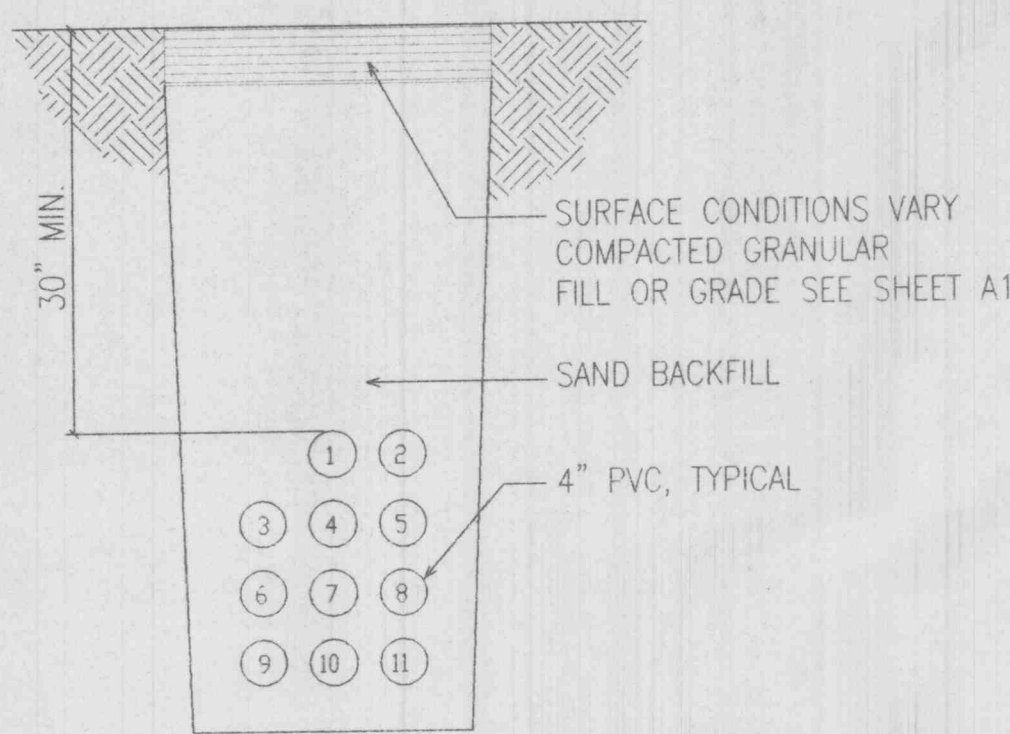
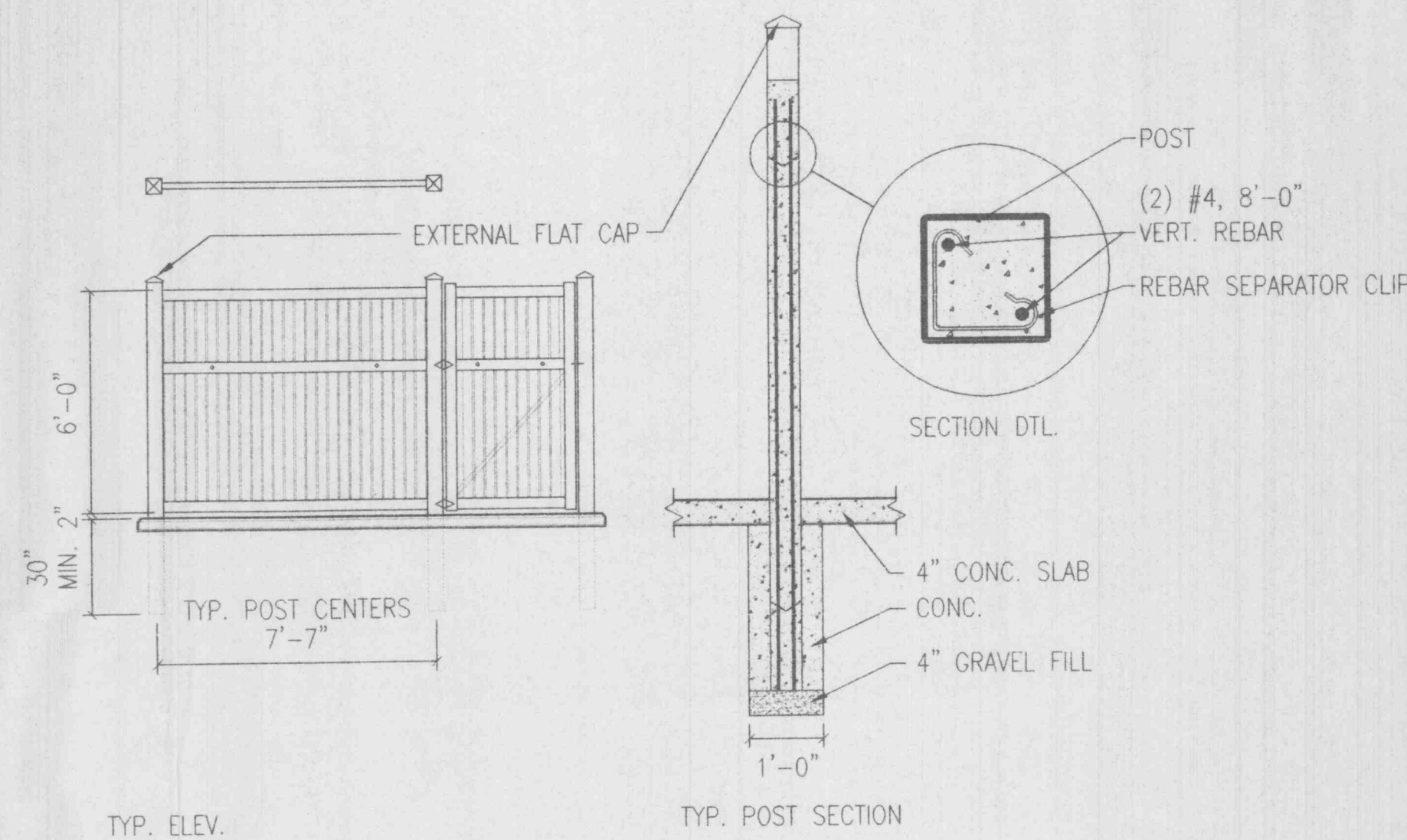


VERIFY AND COORDINATE WITH THE OWNER, THE REQUIRED NUMBERING & NUMBERING SEQUENCE OF THE CONDUIT CORRESPONDING TO THE PLAN.



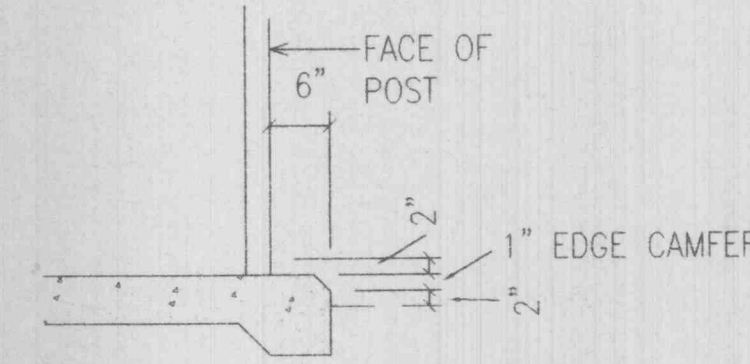
A CONDUIT TRENCH DETAIL Δ Δ
A2 NTS



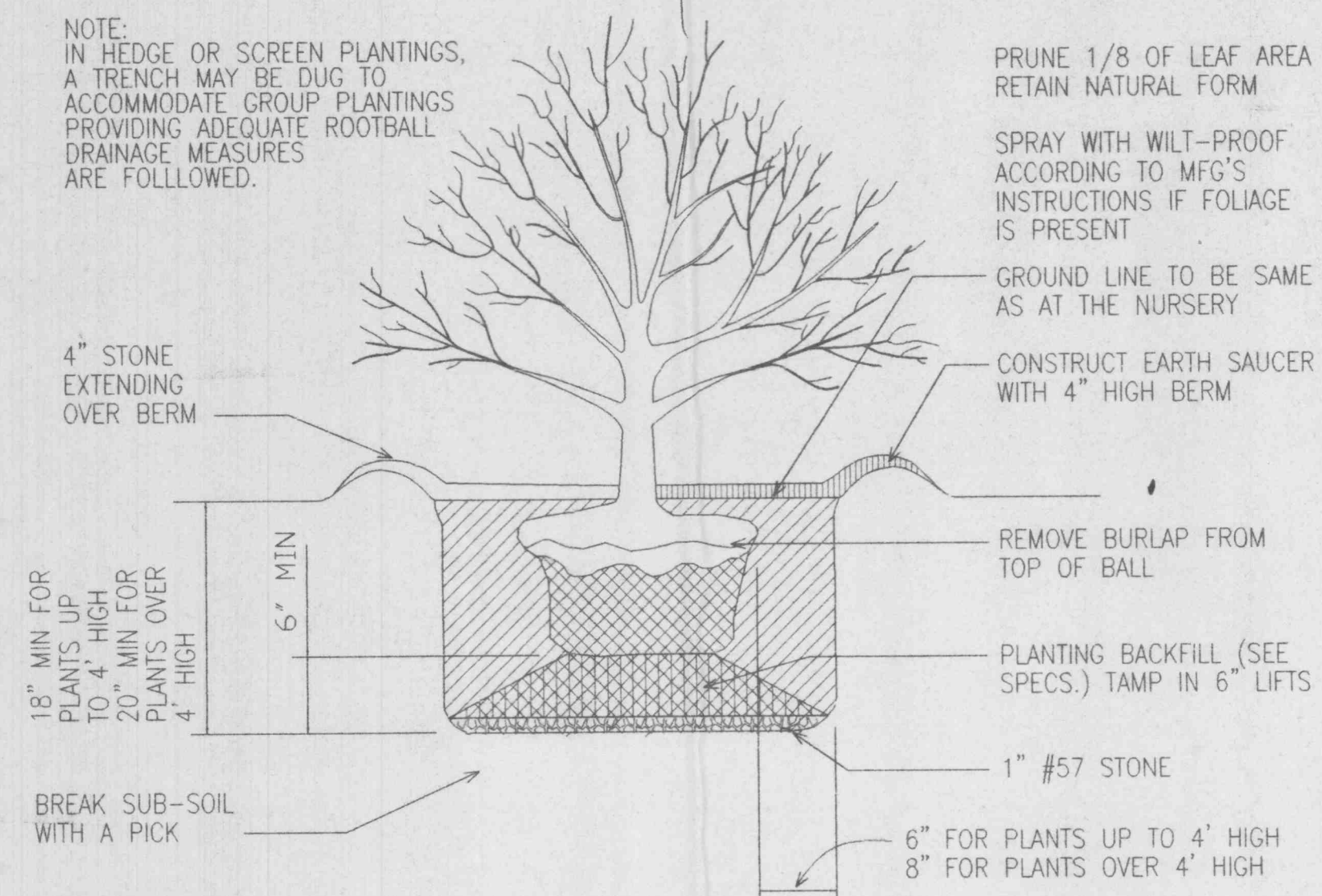
CERTAINTED EVERNEW VINYL FENCE, BEL AIR, COLOR: TAN
INSTALL PER MANUFACTURERS RECOMMENDATIONS
AND SPECIFICATIONS

PROVIDE HARDWARE FOR THE GATE AS FOLLOWS:
ALL HARDWARE TO HAVE A BAKED ENAMEL PAINT FINISH (BLACK)
1. (1) HANDLE W/ SPRING LOADED LATCH
2. (1) PADLOCK HASP
3. (3) FACE MOUNTED STRAP HINGES

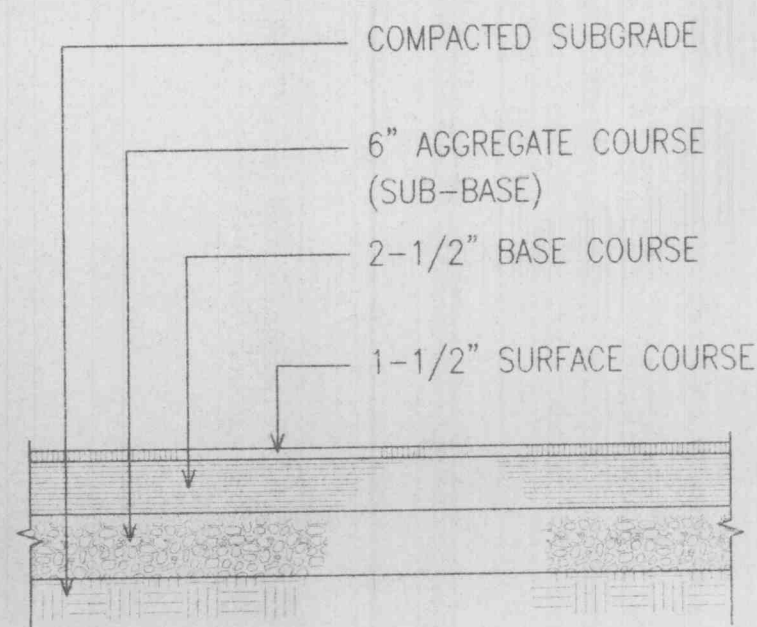
B VINYL FENCE DETAIL Δ
A2 NTS



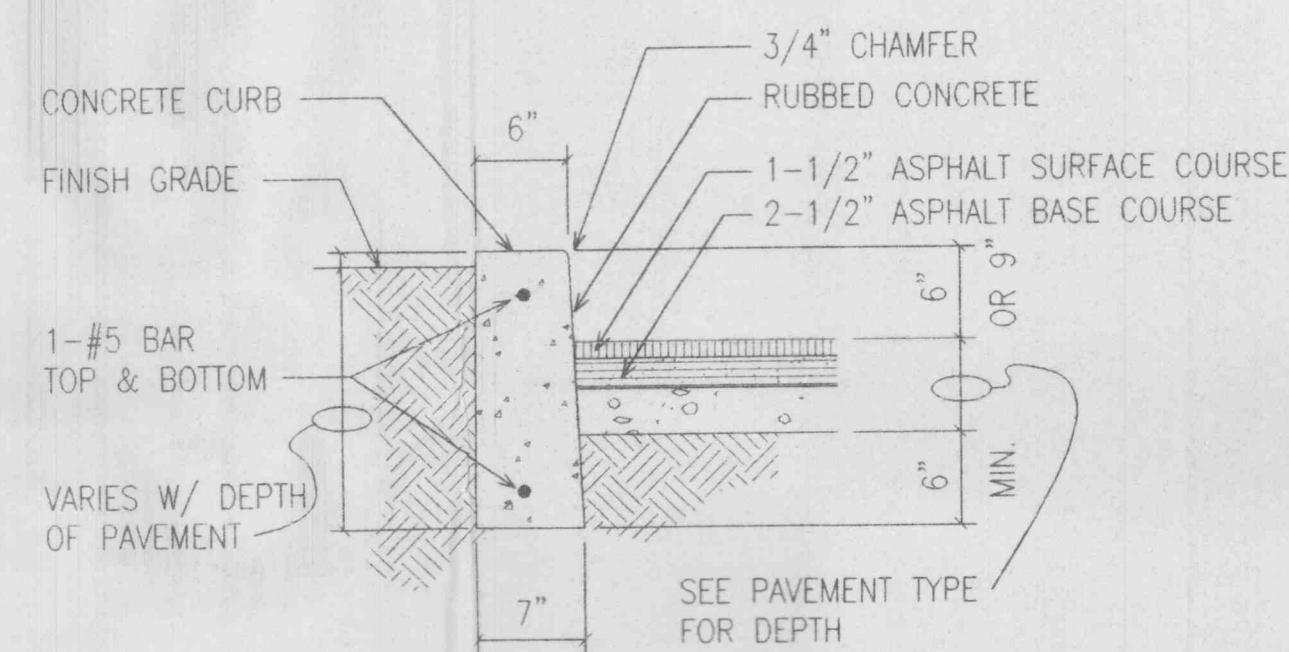
C SLAB EDGE
A2 NTS



D SHRUB PLANTING DETAIL
A2 NTS

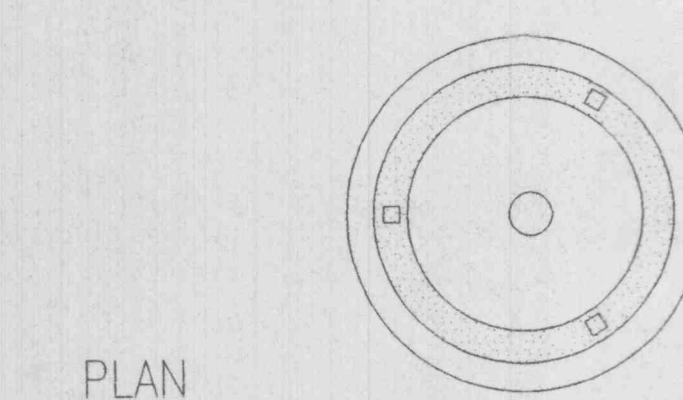
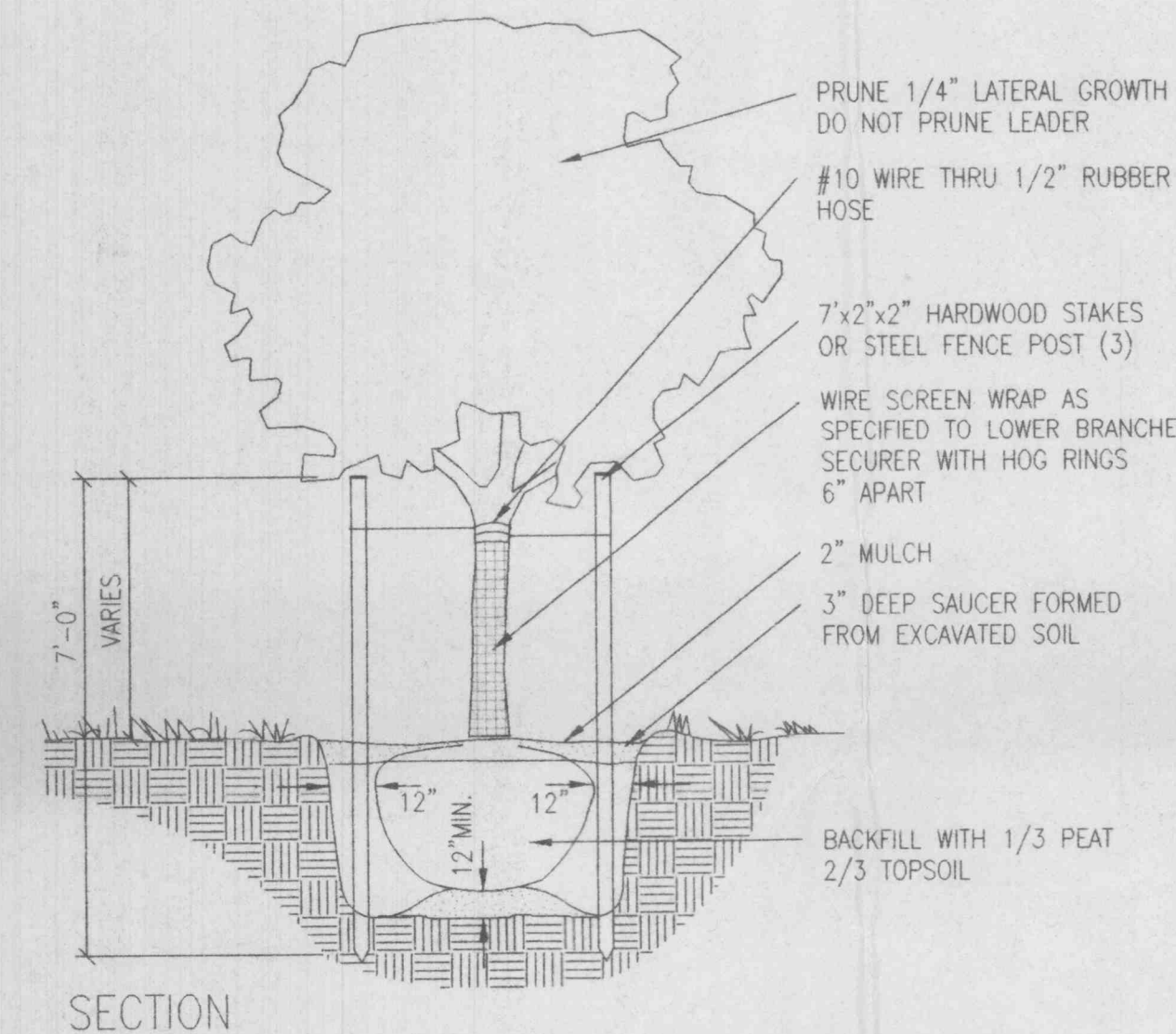


E PAVING DETAIL
A2 NTS



NOTE: PROVIDE SAWN CONTROL JOINTS
@ 30' MAX. LENGTHS OF CURB.

F CONCRETE CURB DETAIL
A2 NTS



H TREE PLANTING & STAKING DETAIL
A2 NTS

AGGREGATE REQUIREMENTS

SIEVE SIZE	PERCENT OF AGGREGATES PASSING SIEVES		
	6" AGGREGATE COURSE (SUB-BASE)	2-1/2" ASPHALTIC BASE COURSE	1-1/2" ASPHALTIC TOP COURSE SURFACE
4"			
3-1/2"			
2-1/2"	100		
2"	95-100		
1-1/2"	85-100		
1"	75-90		
3/4"	65-80	100	
1/2"	55-70	60-85	100
3/8"	--	30-60	75-95
NO. 4	45-60	0-15	01-30
NO. 8	25-50	0-10	0-10
NO. 30	12-30		
NO. 200	5-10		

NOTE: FOR PAVEMENT OVERLAYING EXISTING PAVEMENT, ONLY TOP COURSES REQUIRED.
FOR ALL OTHER APPLICATIONS, ALL LAYERS ARE REQUIRED.

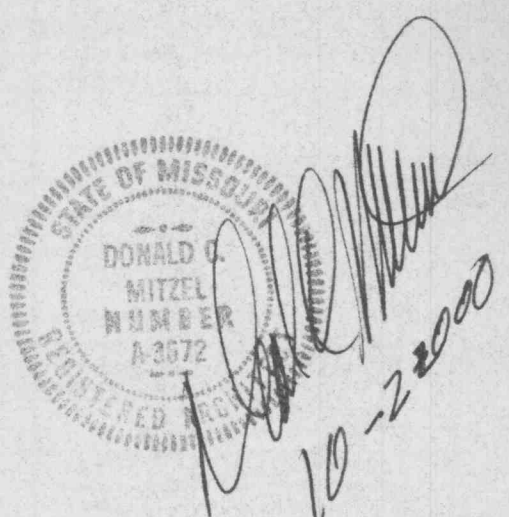
Revision	Date	No.
CORRECTIONS	06-08-00	Δ
REVISIONS PER CITY	07-20-00	Δ
REVISIONS PER GTE	08-28-00	Δ
REVISIONS PER CITY	09-08-00	Δ

Notice

NO PART OF THESE PLANS AND/OR PROJECT MANUAL MAY BE REPRODUCED, COPIED, STORED IN A RETRIEVAL SYSTEM OR TRANSMITTED IN ANY FORM BY ANY MEANS WITHOUT PRIOR WRITTEN PERMISSION OF MITZEL + SCROGGS ARCHITECTS, INC.

DRAWINGS SHALL NOT BE SCALED. QUESTIONS ON DIMENSIONS SHALL BE REFERRED TO THE ARCHITECT'S OFFICE.

CONTRACTORS SHALL VERIFY AND COORDINATE ALL DIMENSIONS, DETAILS, AND JOB CONDITIONS.



GTE NORTH, INC.
NEW R.S.U. BUILDING
WINGHAVEN DEVELOPMENT
PHOENIX PARKWAY
DARDENNE, MO



2401 East Broadway Bldg. A
Columbia, MO 65201-6118
Telephone (573) 449-0951
Fax (573) 449-0921

SITE DETAILS

Scale	AS NOTED	
Date	03-20-2000	Comm No. 000960
In Charge	DCM	
Drawn By	RLC/WHC	
Checked By	888	

A2