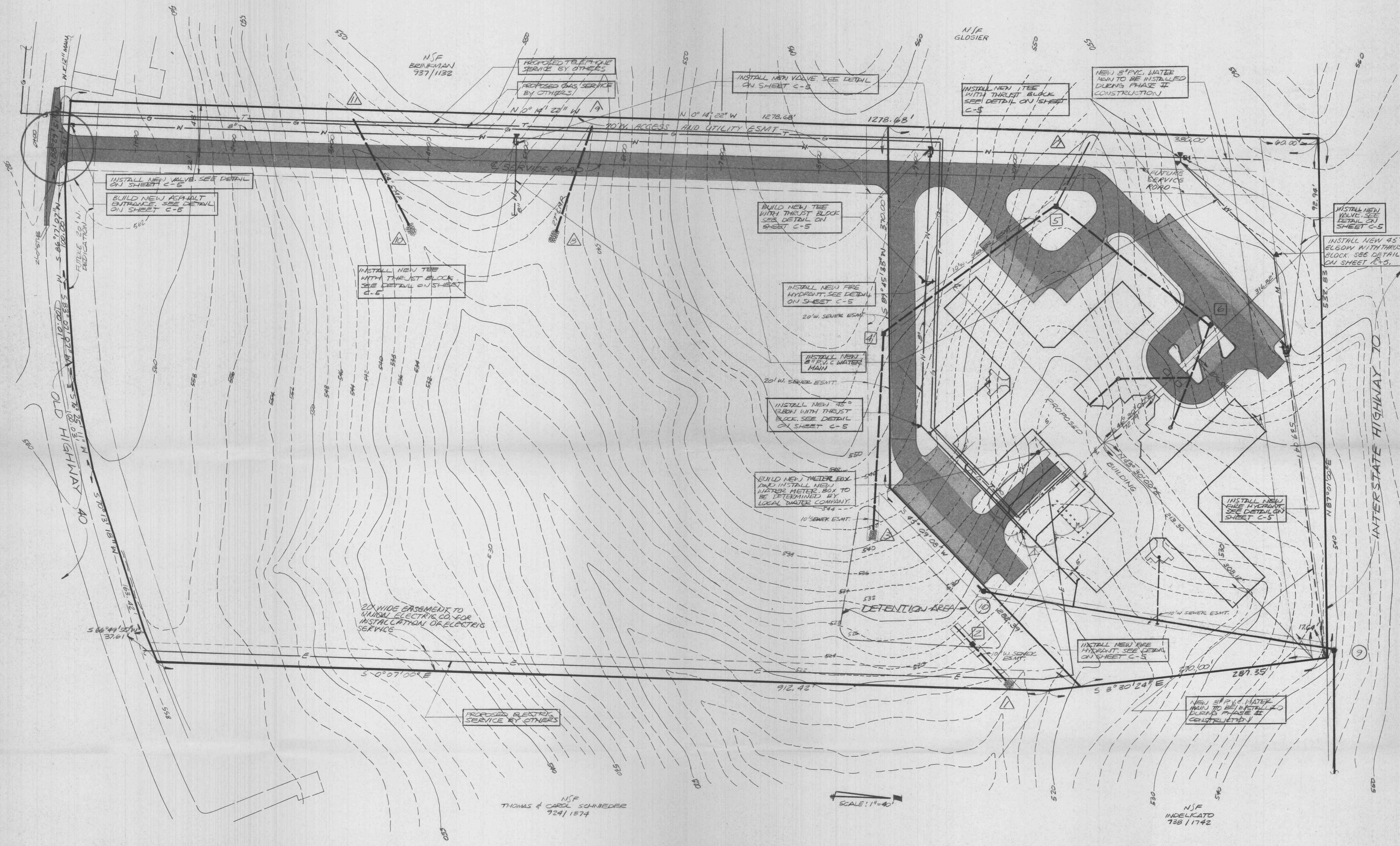
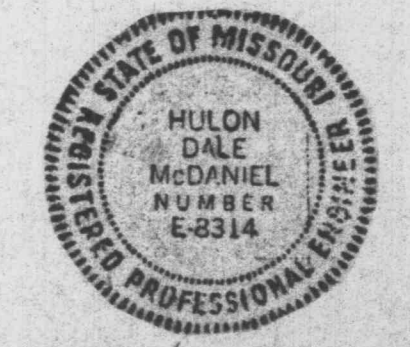


NOTE:
UNDERGROUND FACILITIES, STRUCTURES AND UTILITIES HAVE BEEN PLOTTED FROM AVAILABLE SURVEYS AND RECORDS AND, THEREFORE, THEIR LOCATIONS MUST BE CONSIDERED APPROXIMATE ONLY. THERE MAY BE OTHERS, THE EXISTENCE OF WHICH IS PRESENTLY NOT KNOWN.



PAVEMENT LEGEND

- 2" TYPE "C" ASPHALTIC CONCRETE SURFACE COURSE WITH 2" ROLLED STONE BASE COURSE.
- 3" TYPE "C" ASPHALTIC CONCRETE SURFACE COURSE WITH 3" ROLLED STONE BASE COURSE.



MSP
MASSMANN, STEPHANS & FOEHLMAN, INC.
201 S. CENTRAL, CLAYTON, MO 65105
SUITE 201 • (314) 725-4333
LAND SURVEYING • CIVIL ENGINEERING • LAND PLANNING

Henmi Jen Enderling, Inc.
Architects & Planners
HBD Contracting, Inc.
General Contractor

GARDEN VIEW CARE CENTER
700 Garden Path
LARUS CORPORATION
Developer
O'Fallon, Missouri

Date	4/2/87
Revisions	
	4/18/87
	4-23-87
	5-01-87
	5/28/87
	8/13/87

Sheet Title
PAVING & UTILITY PLAN

Sheet No.
C-3
of 7 Sheets
File No. 1740

12/29/84