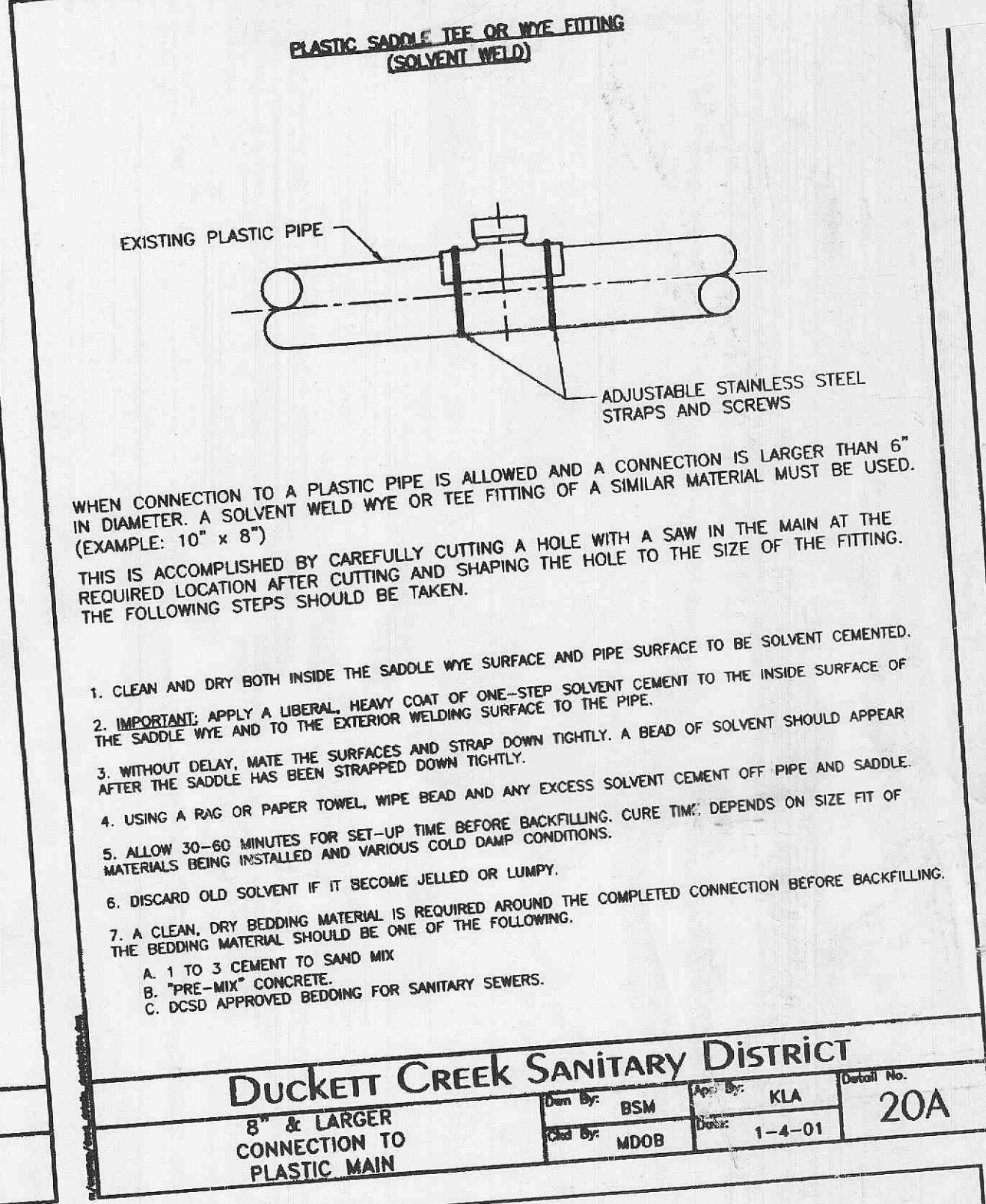
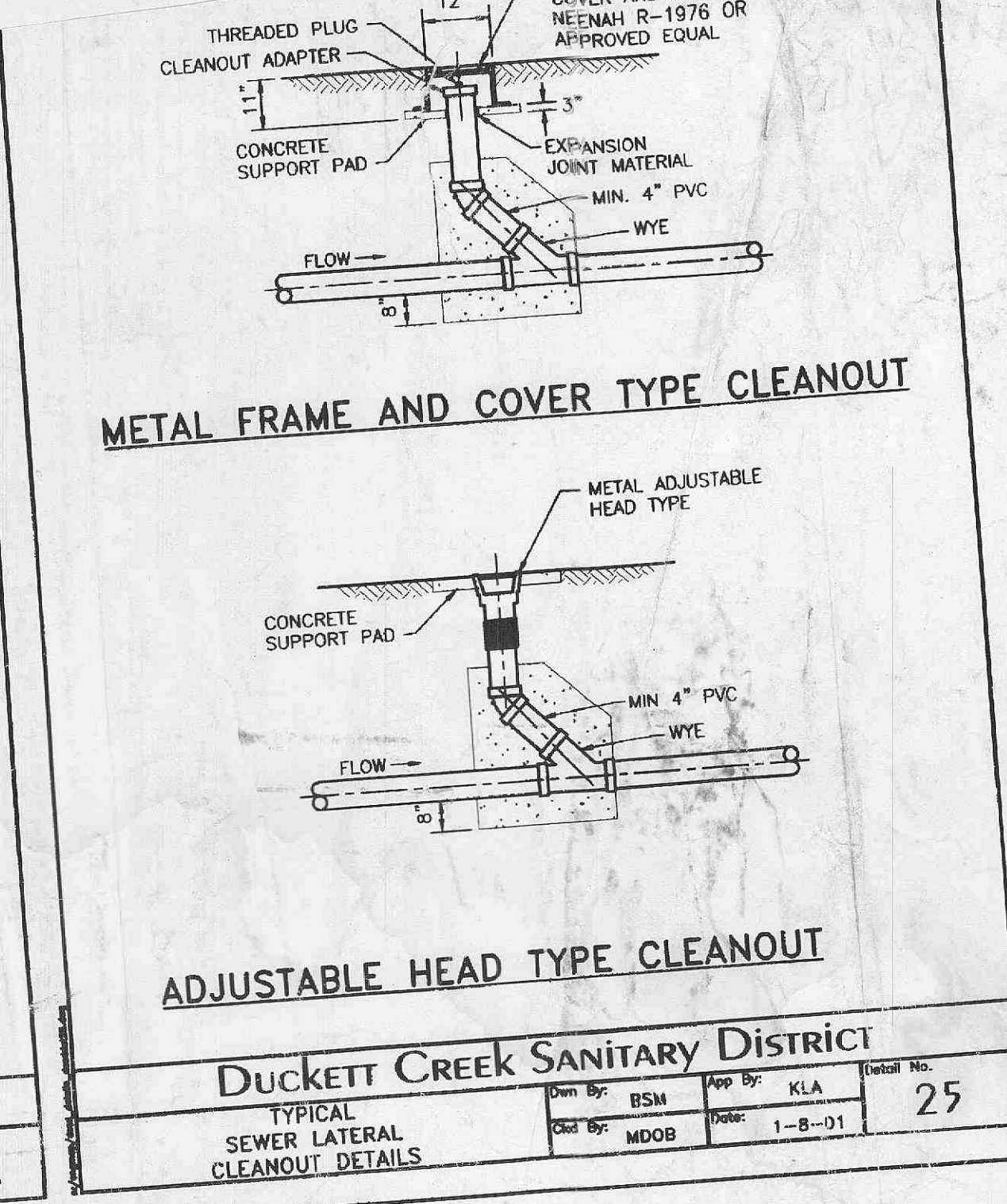


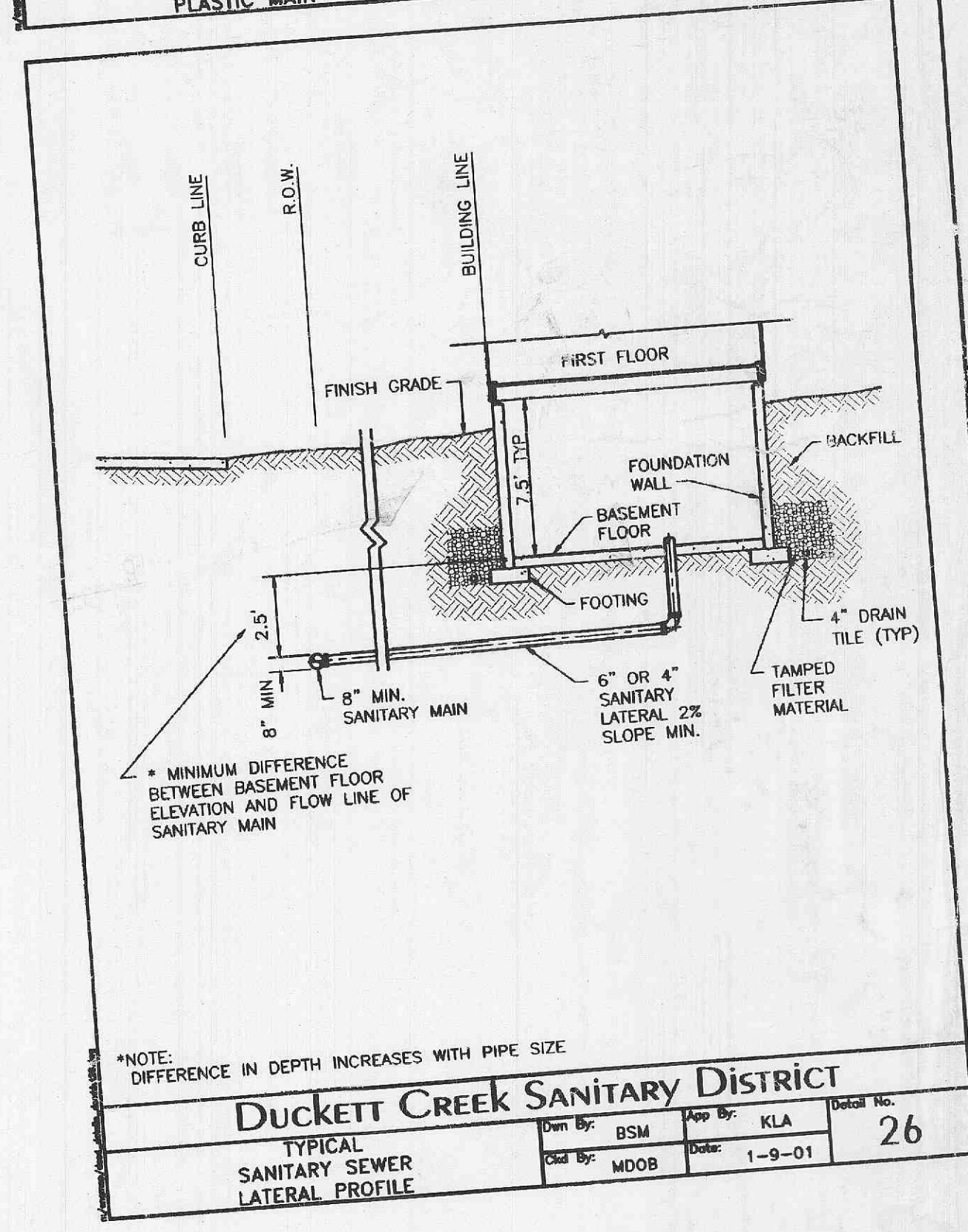
DUCKETT CREEK SANITARY DISTRICT			
PIPE BEDDING CLASS "C" (FOR ALL PIPE EXCEPT REINFORCED CONCRETE PIPE)			
Dim By: BSM	App By: KLA	Detail No. 3	
Clad By: MDOB	Date: 12-21-99		



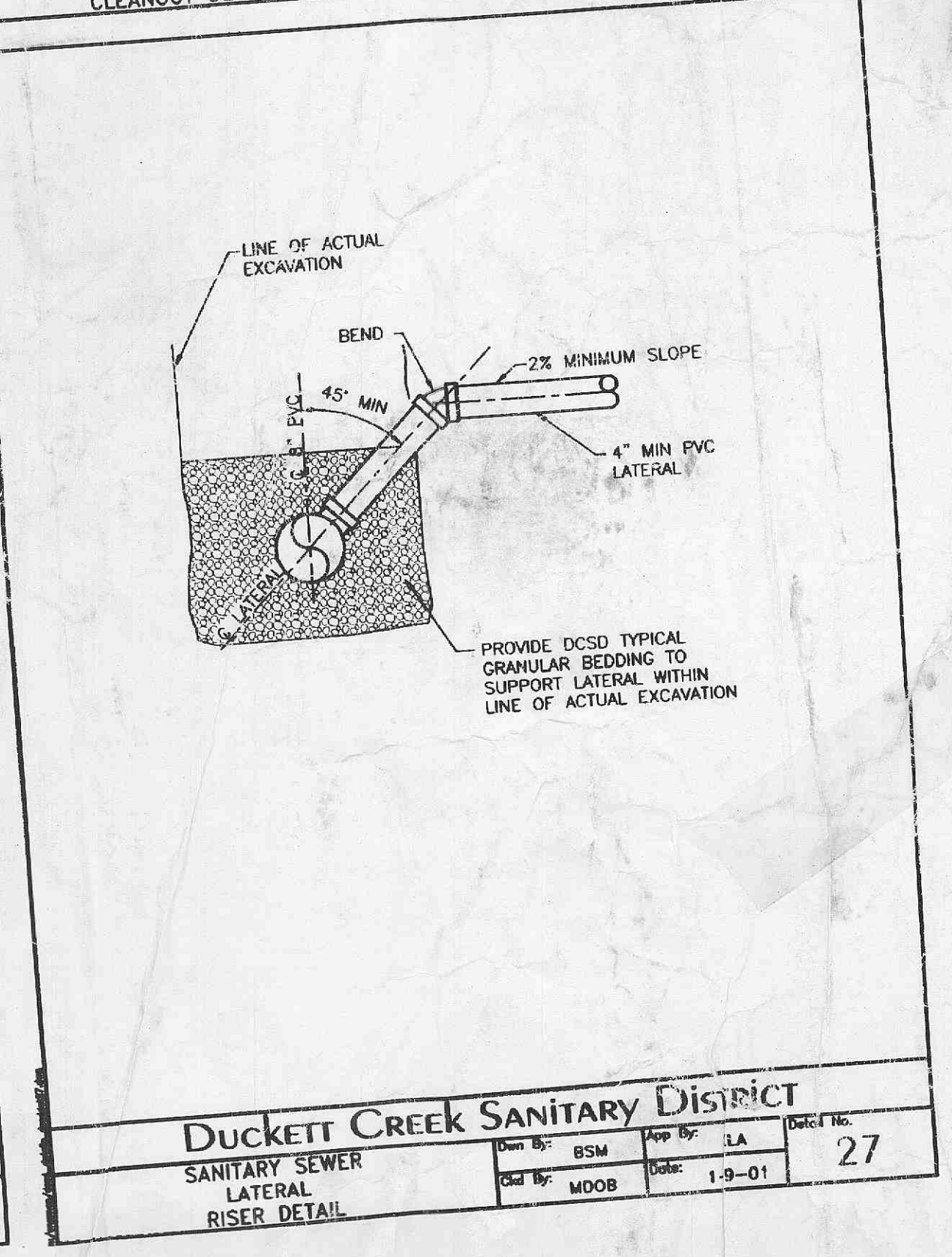
DUCKETT CREEK SANITARY DISTRICT			
8" & LARGER CONNECTION TO PLASTIC MAIN			
Dim By: BSM	App By: KLA	Detail No. 20A	
Clad By: MDOB	Date: 1-4-01		



DUCKETT CREEK SANITARY DISTRICT			
TYPICAL SEWER LATERAL CLEANOUT DETAILS			
Dim By: BSM	App By: KLA	Detail No. 25	
Clad By: MDOB	Date: 1-8-01		



DUCKETT CREEK SANITARY DISTRICT			
TYPICAL SANITARY SEWER LATERAL PROFILE			
Dim By: BSM	App By: KLA	Detail No. 26	
Clad By: MDOB	Date: 1-9-01		



DUCKETT CREEK SANITARY DISTRICT			
SANITARY SEWER LATERAL RISER DETAIL			
Dim By: BSM	App By: LA	Detail No. 27	
Clad By: MDOB	Date: 1-9-01		

the clayton engineering company, inc.
 ENGINEERS • SURVEYORS • PLANNERS
 11920 WESTLINE INDUSTRIAL DRIVE
 ST. LOUIS, MISSOURI 63148
 (314) 992-2838 FAX: (314) 992-2837
 MO Cert. of Authority - Prof. Engineering No. 000878
 IL Dept. Financial & Prof. Reg. Design & Engineering Co.

NO.	DATE	REVISIONS
3	03-19-14	ERD CONSTRUCTION

Prepared for:
 DELMAR GARDENS ENTERPRISE
 14805 N. Chesterfield
 CHESTERFIELD, MO 63077
 636-7

STATE OF MISSOURI
 EDWARD J. DABLER, JR.
 E-20441

Desig
 Draw
 Che
 Dat
 Pro

The signed and sealed original of this drawing is on file at the offices of The Clayton Engineering Company, Inc. The signed and sealed original is the official document and shall take precedence over any digital version.