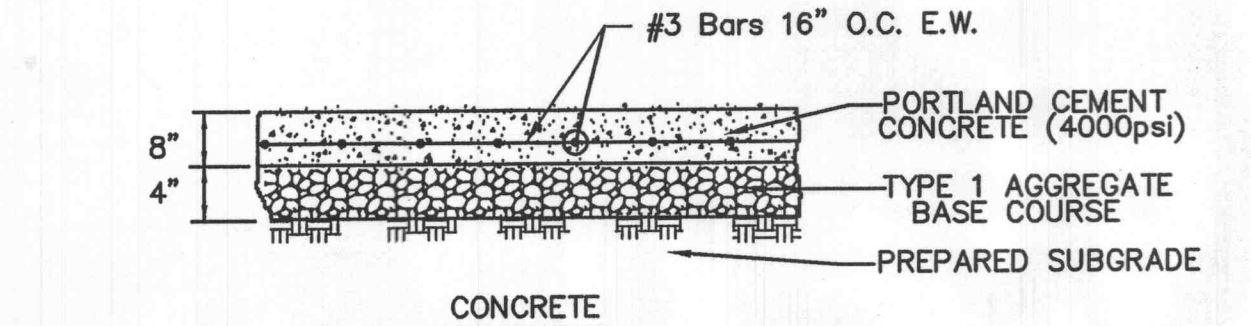
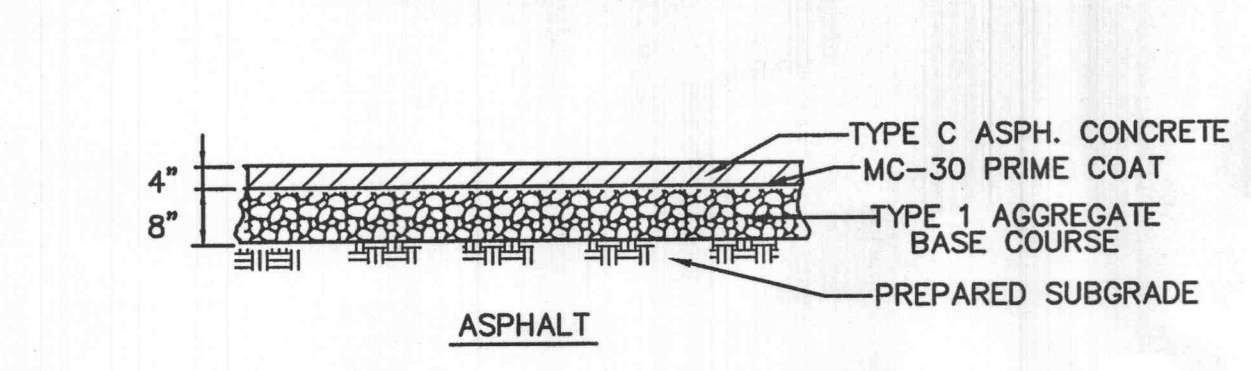
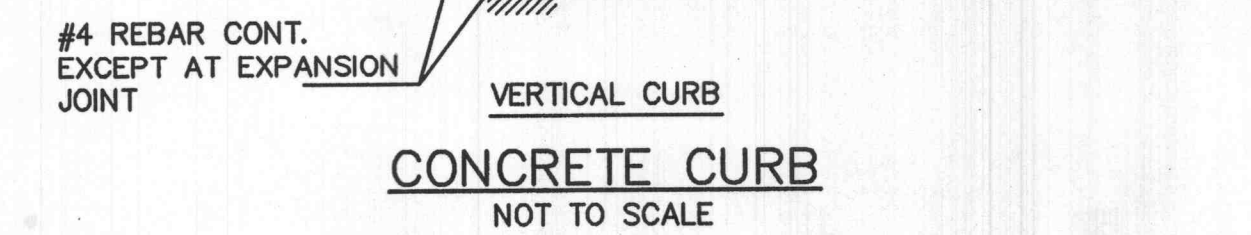
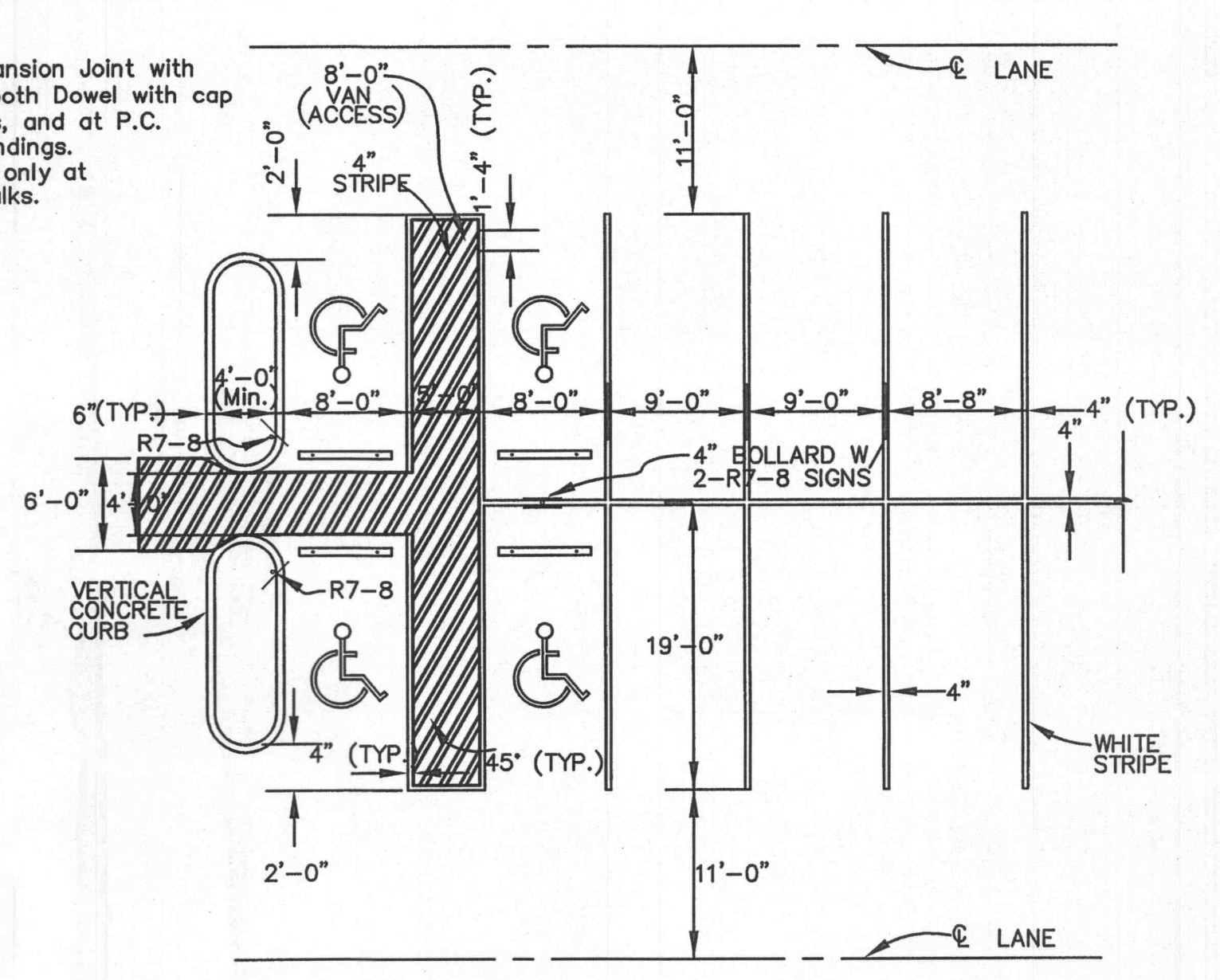


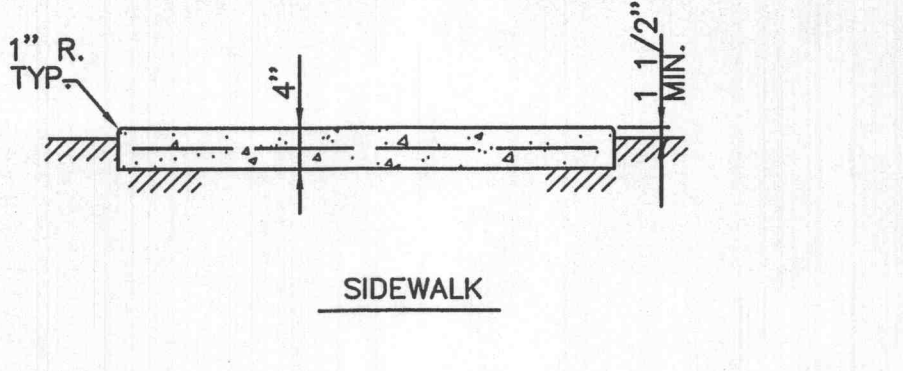
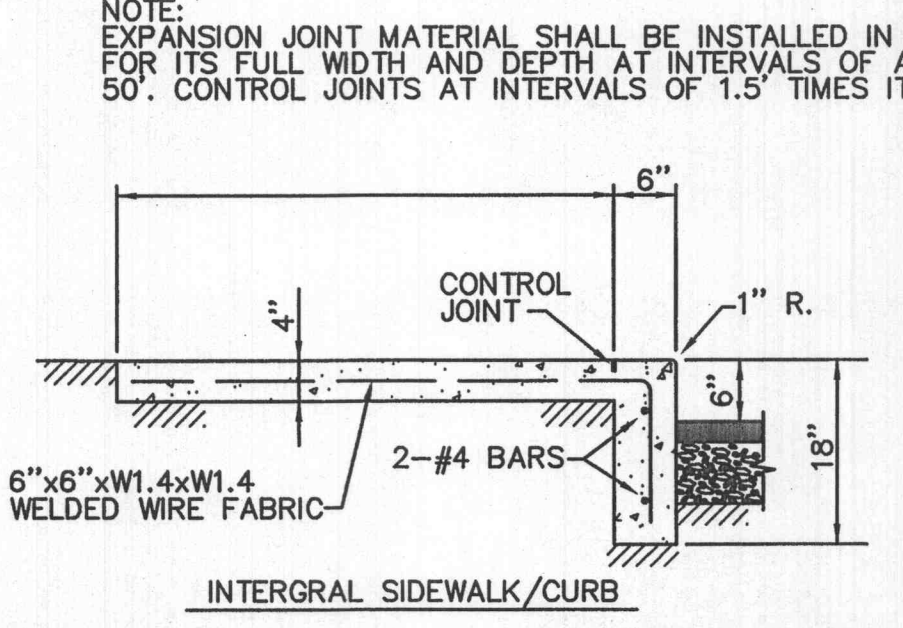
Place 1/2" Expansion Joint with 1/2" x 18" Smooth Dowel with cap at 20'± Centers, and at P.C. and P.T. of roundings. Expansion Joint only at junction with walks.



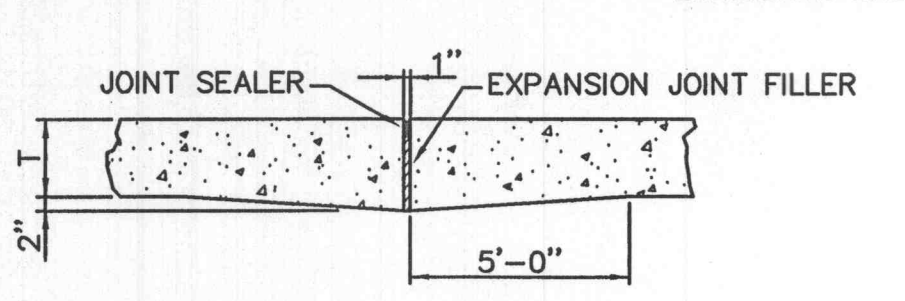
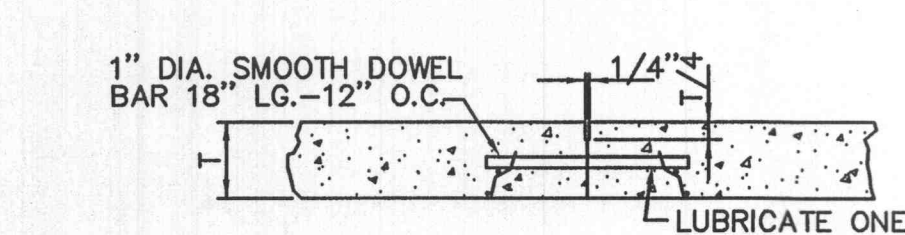
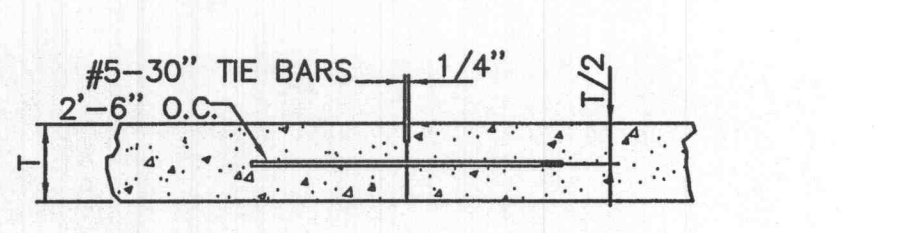
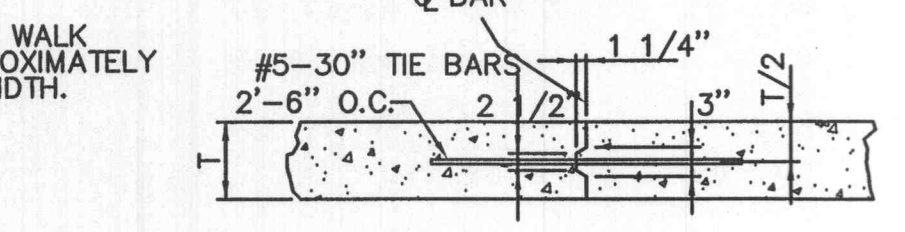
PAVEMENT DETAILS NOT TO SCALE



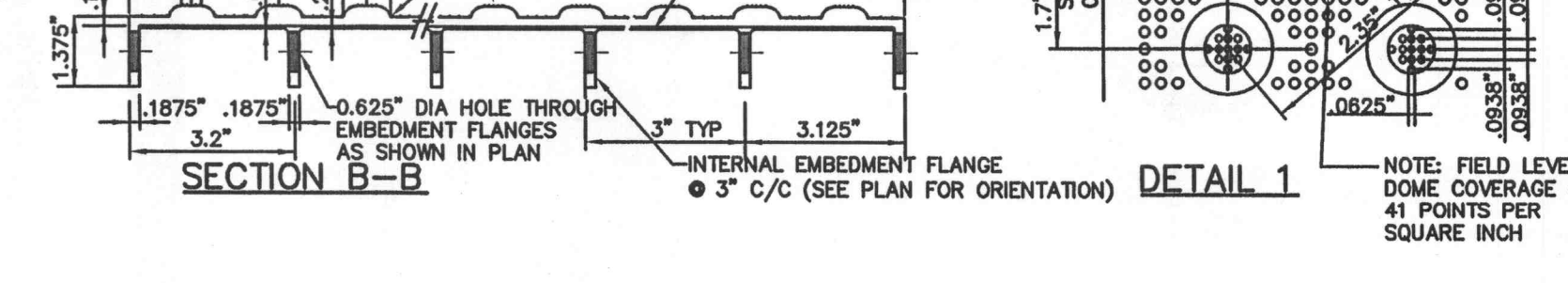
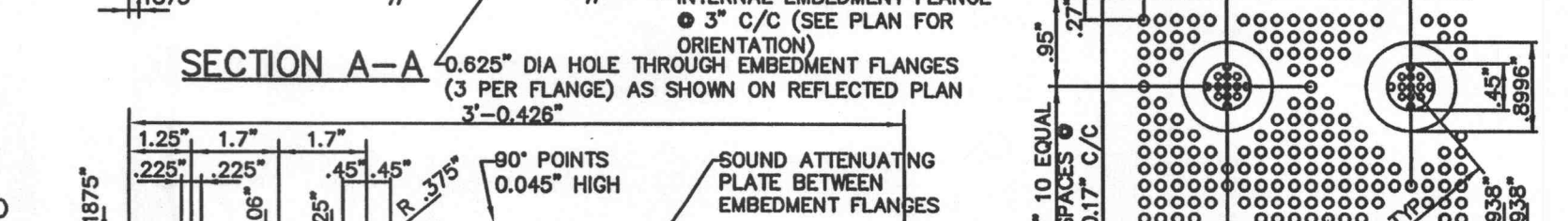
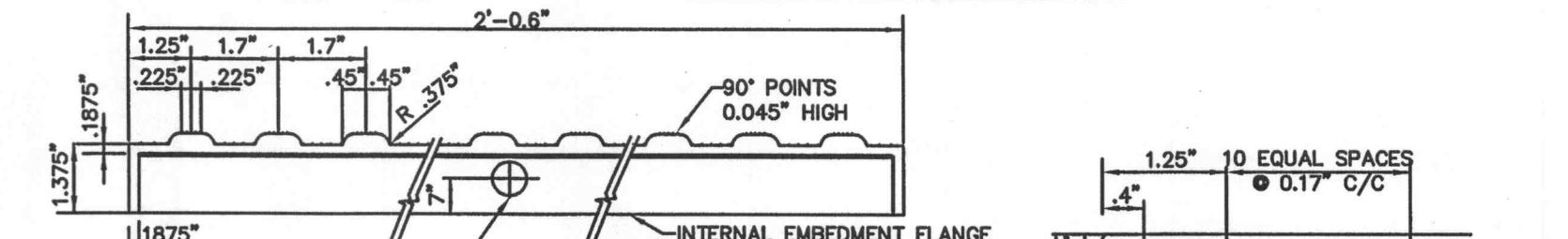
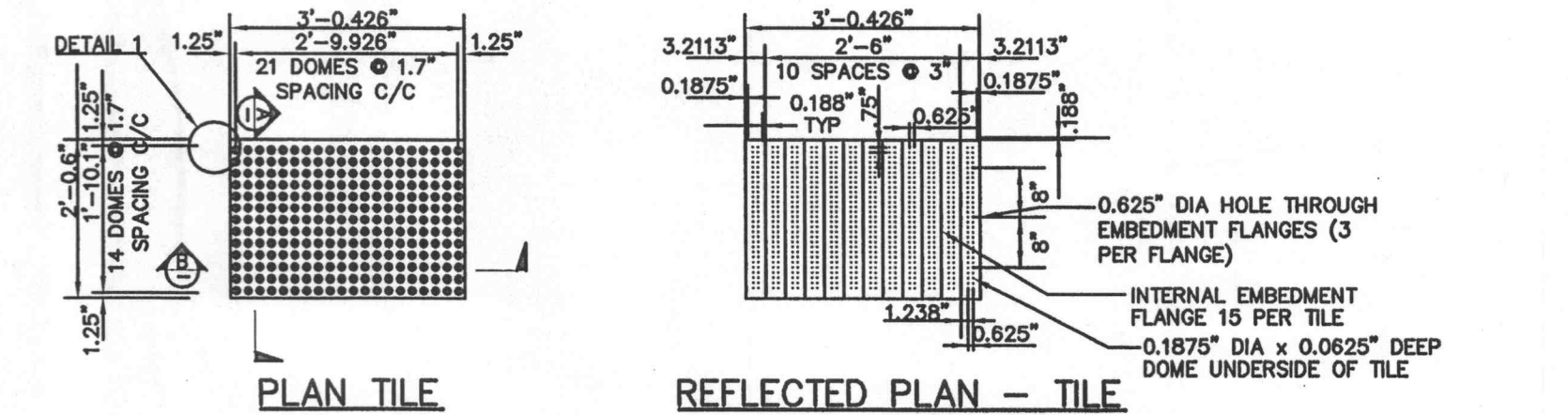
STRIPING-90 PARKING NOT TO SCALE



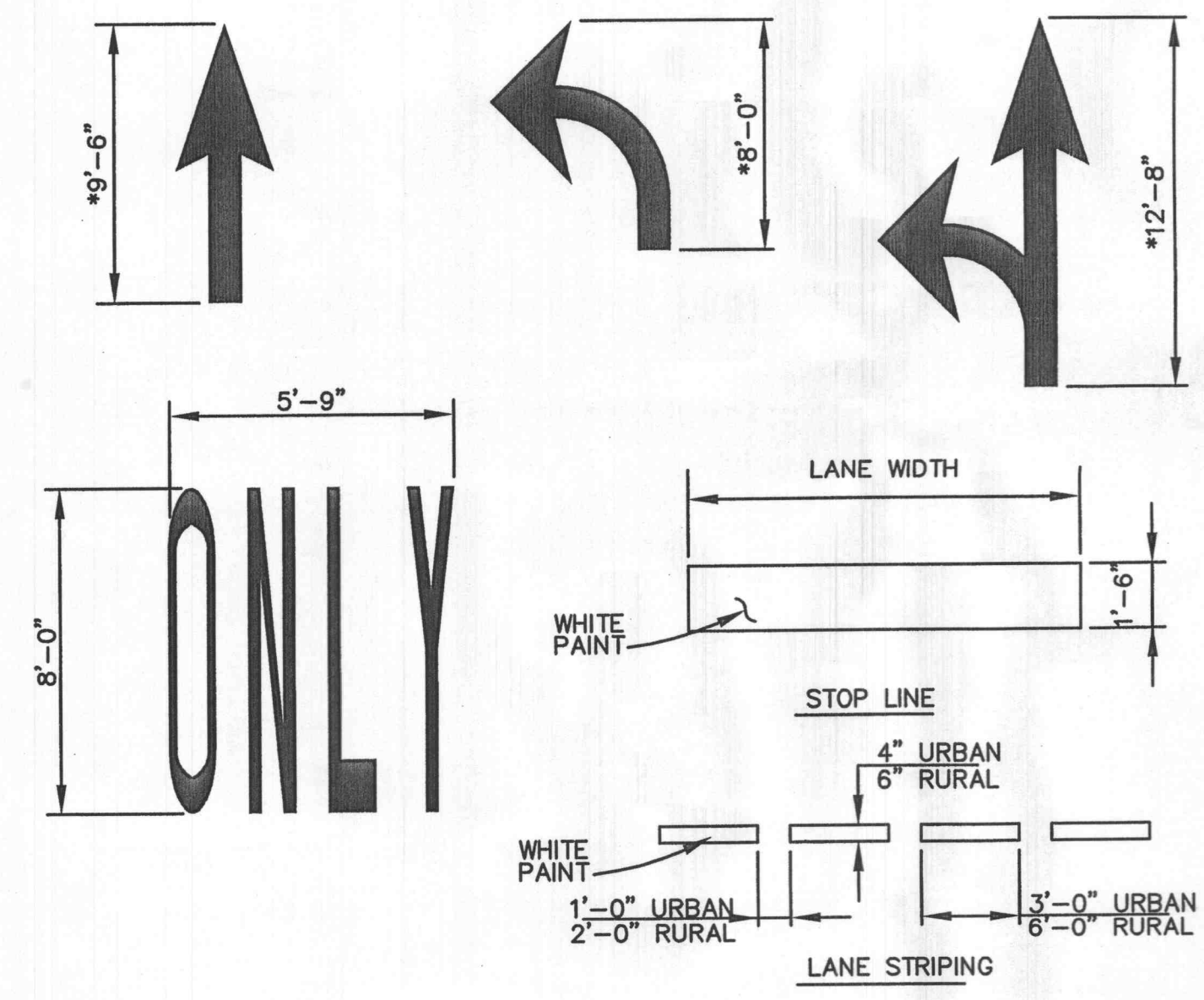
CONCRETE SIDEWALK NOT TO SCALE



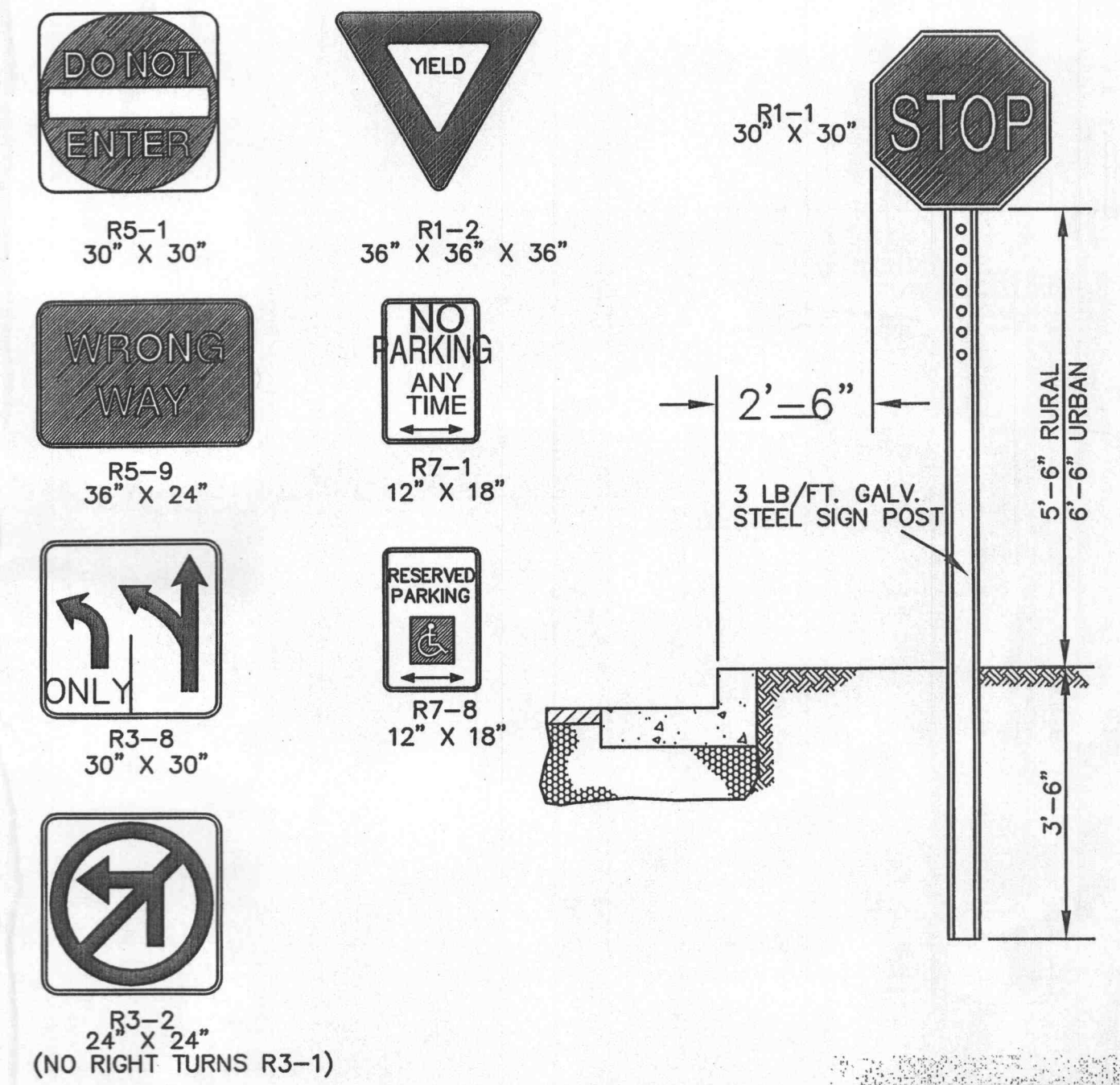
CONCRETE PAVEMENT JOINTS NOT TO SCALE



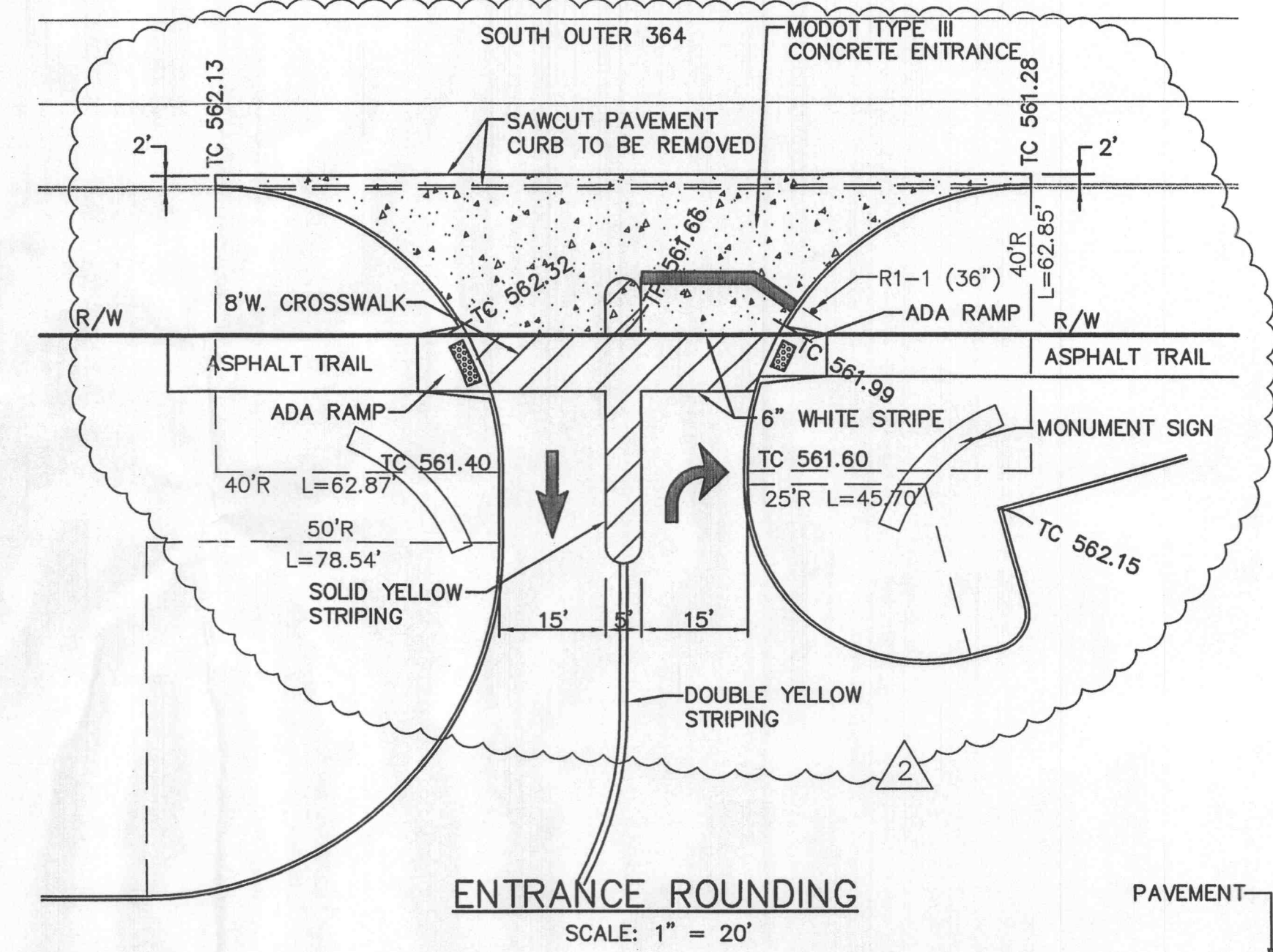
TRUNCATED DOMES NOT TO SCALE



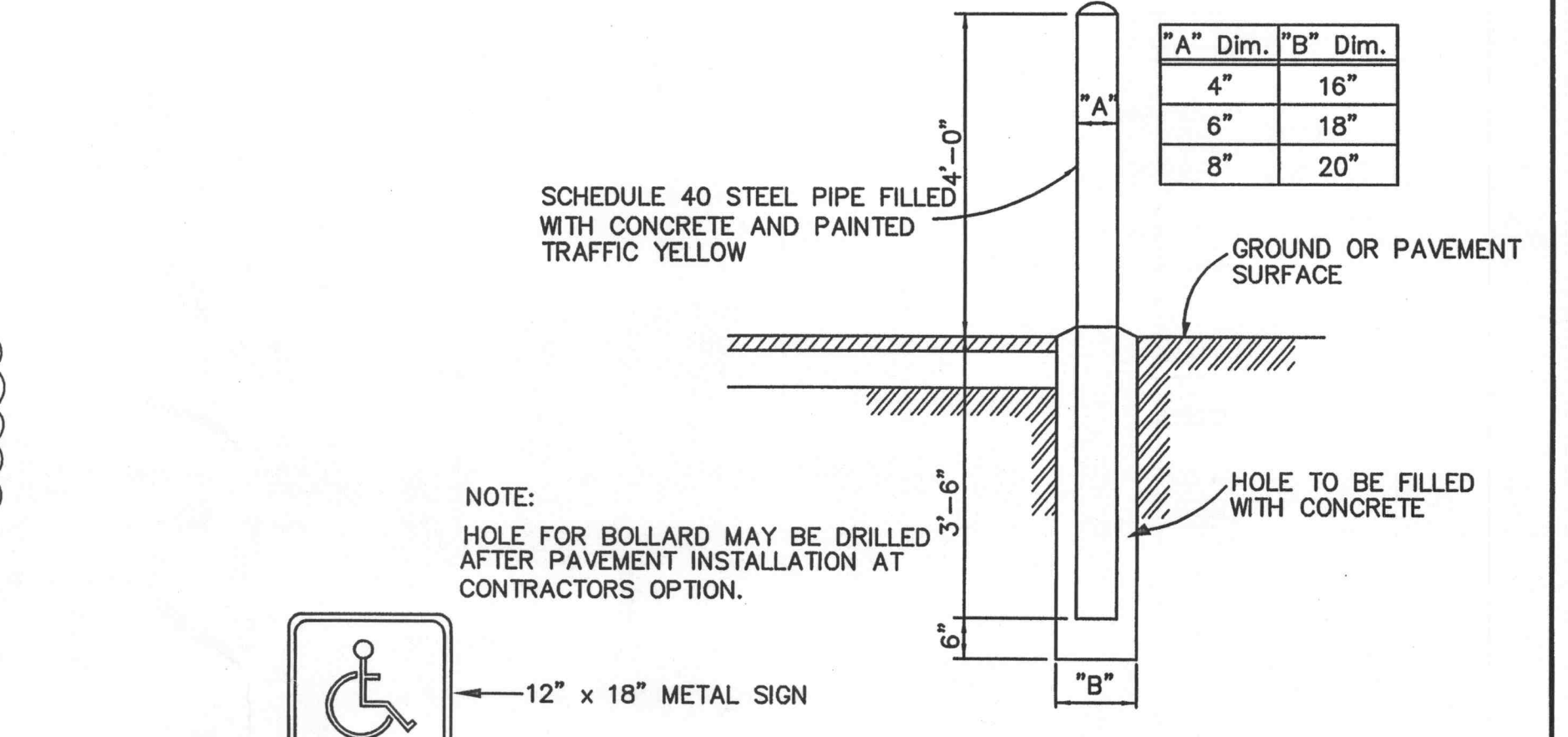
PAVEMENT MARKINGS NOT TO SCALE



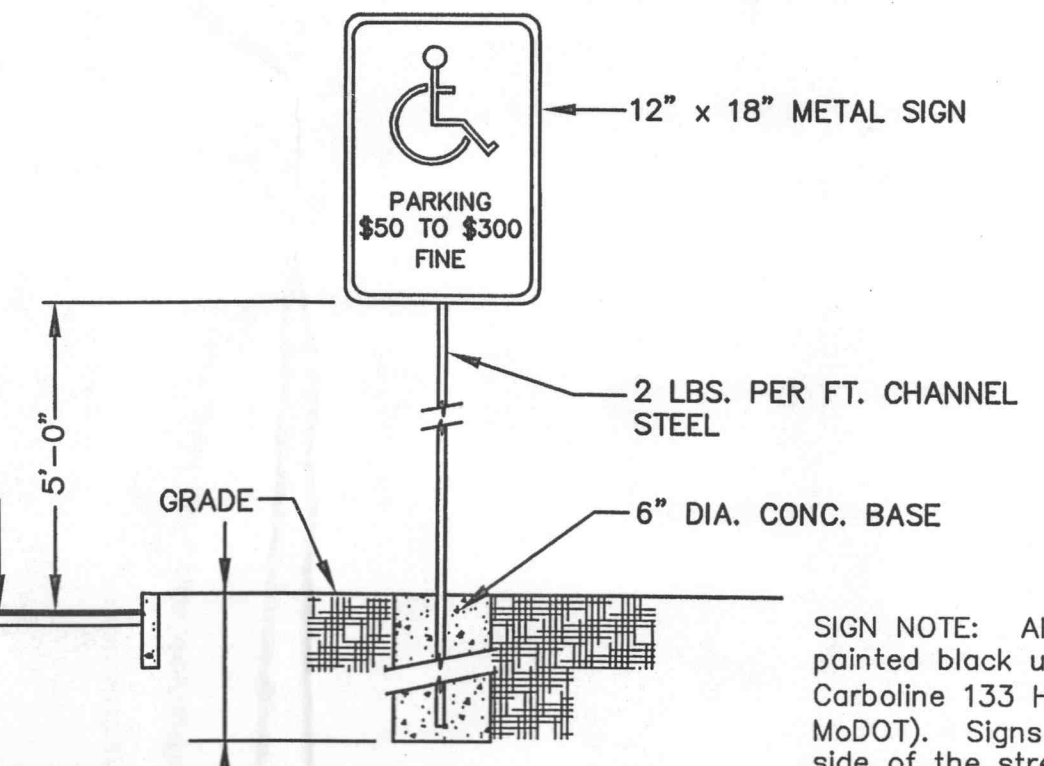
SIGN INSTALLATION NOT TO SCALE



ENTRANCE ROUNDING SCALE: 1" = 20'



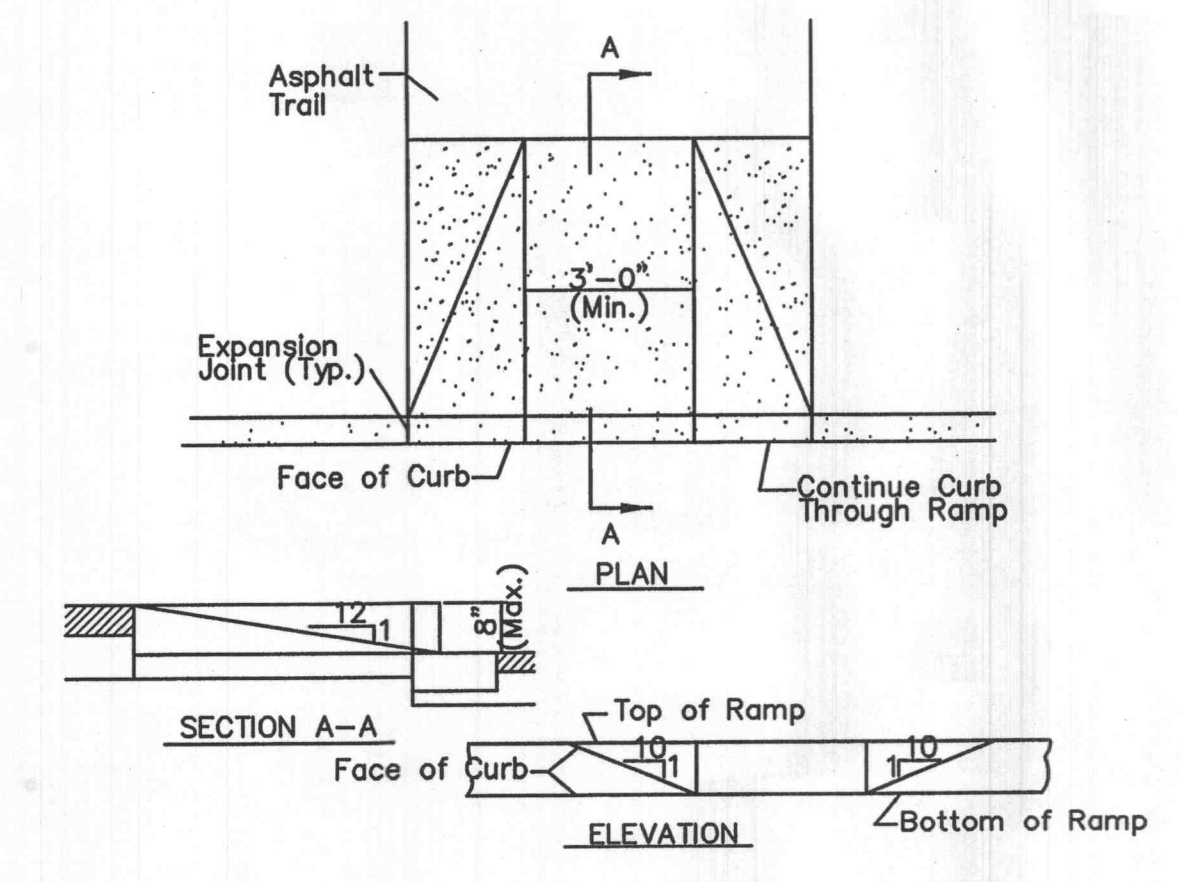
PIPE BOLLARD NOT TO SCALE



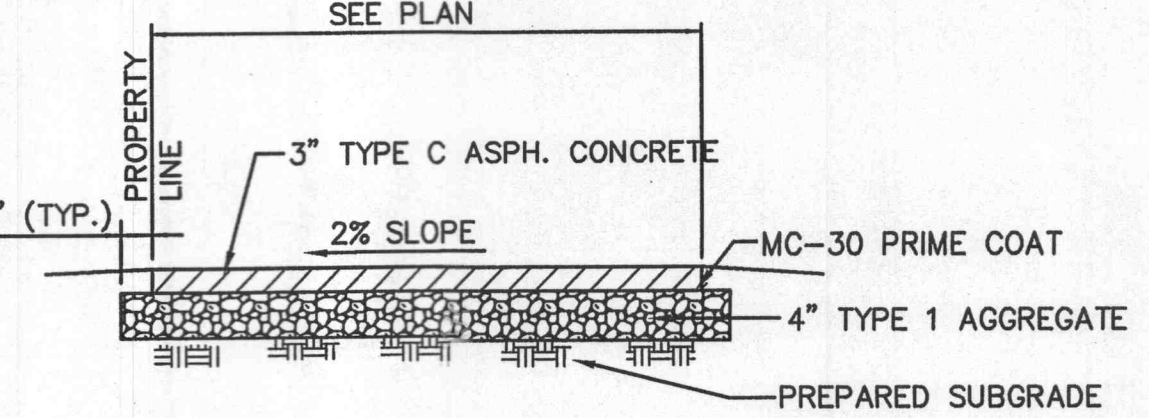
HANDICAPPED SIGN NOT TO SCALE

NOTES:
 PROVIDE CONCRETE HANDICAP RAMP WHERE TRAIL INTERSECTS ACCESS DRIVES OR STREETS OR WHERE TRAIL INTERSECTS WITH CURBING (SEE PLAN).
 PROVIDE STRIPING THROUGH THE ACCESS DRIVES OR STREETS INTO THE DEVELOPMENT.
 MAXIMUM SLOPE OF THE PATH SHALL NOT EXCEED 8% AND 2% CROSS SLOPE PER CITY OF OFALLON SPECIFICATIONS.

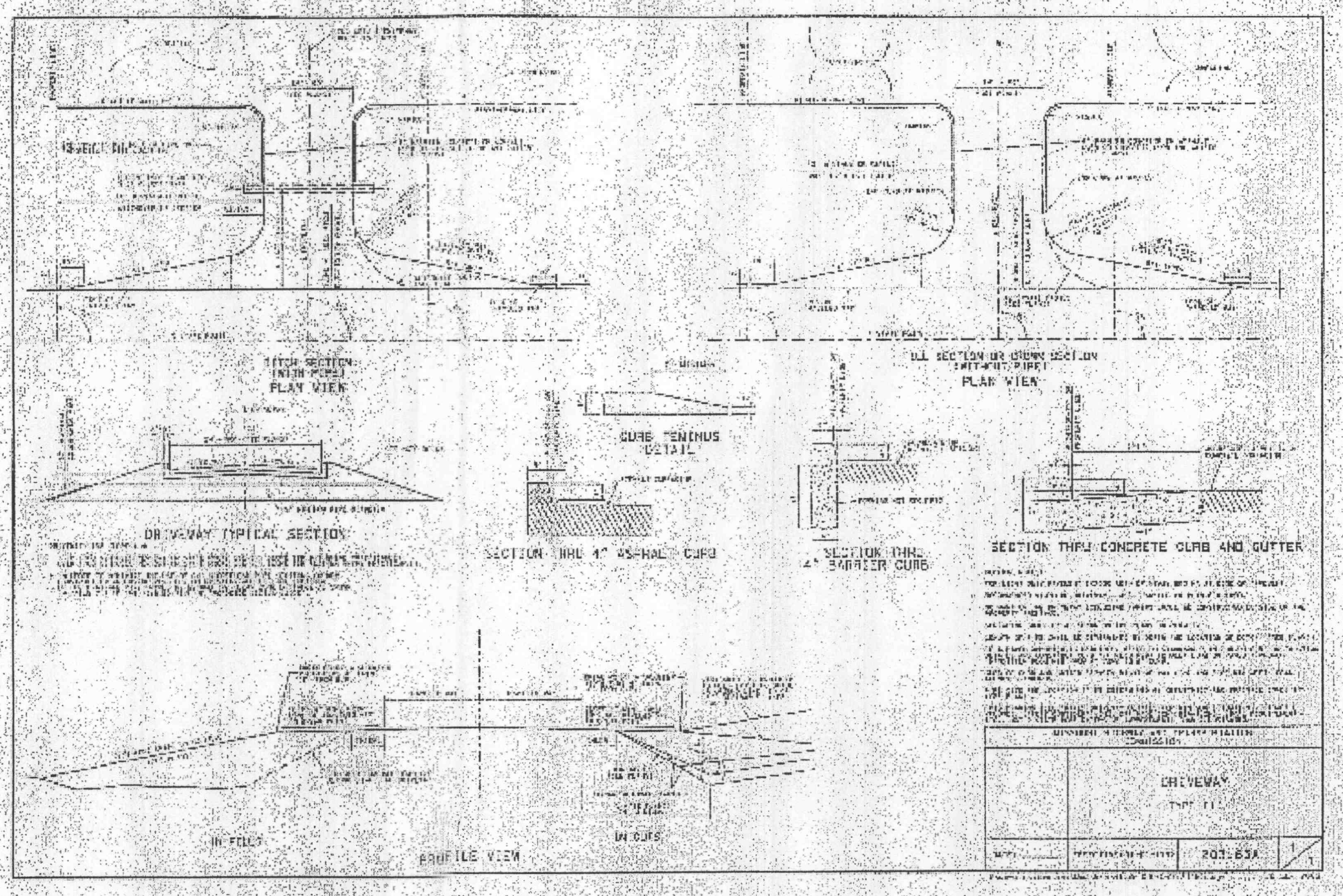
THE TRAIL SHALL BE CONSTRUCTED WITH A CONSISTENT SLOPE WITH VERTICAL CURVES A MINIMUM OF 50' IN LENGTH. AFTER FINAL COMPRESSION, THE SURFACE SHALL BE SMOOTH AND TRUE TO THE ESTABLISHED CROWN AND GRADE. ANY LOW OR DEFECTIVE PLACES SHALL IMMEDIATELY BE REMEDIED BY CUTTING OUT THE COURSE AT SUCH SPOTS AND REPLACING IT WITH FRESH HOT MIXTURE, WHICH SHALL BE IMMEDIATELY COMPACTED TO CONFORM WITH THE SURROUNDING AREA AND SHALL BE THOROUGHLY BONDED TO IT. THE FINISHED PAVEMENT SHALL BE SET FREE FROM DEPRESSIONS EXCEEDING ONE-EIGHTH INCH AS MEASURED WITH A TEN-FOOT STRAIGHT EDGE PARALLELING THE CENTERLINE OF THE TRAIL.



HANDICAP RAMP (Contained Within Sidewalk) NOT TO SCALE



MULTI-USE TRAIL NOT TO SCALE



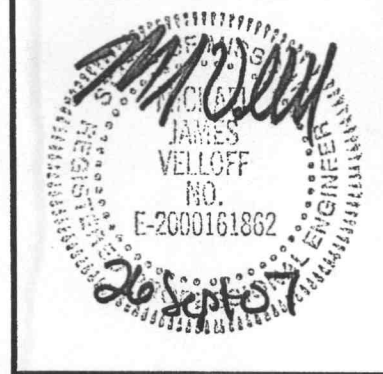
The signed and sealed original of this drawing is on file at the offices of The Clayton Engineering Company, Inc. The signed and sealed original is the official document and shall take precedence over any digital version.

NO.	DATE	BY	DESCRIPTION
2	08/20/07	RKF	Adjust rounding elevations due to new finish floor
	05/07/07		BID SET

PAVING DETAILS
GARDEN VILLAS OF O'FALLON
 Highway N and Twin Chimneys Boulevard O'Fallon, Missouri 63366

Prepared for:
DELMAR GARDENS ENTERPRISES, INC.
 14805 N. Outer 40
 Chesterfield, MO 63017
 636-733-7000

Copyright 2007
 Clayton Engineering Co.
 All Rights Reserved



the clayton engineering company, inc.
 ENGINEERS • SURVEYORS • PLANNERS
 11920 WESTLINE INDUSTRIAL DRIVE
 ST. LOUIS, MISSOURI 63146
 (314) 692-8888 FAX: (314) 692-8688
 clayton-engineering.com

Designed	RKF
Drawn	RKF
Checked	MJV
Date	04/25/07
Project Number	00228.10
Sheet Number	C-10 of 17