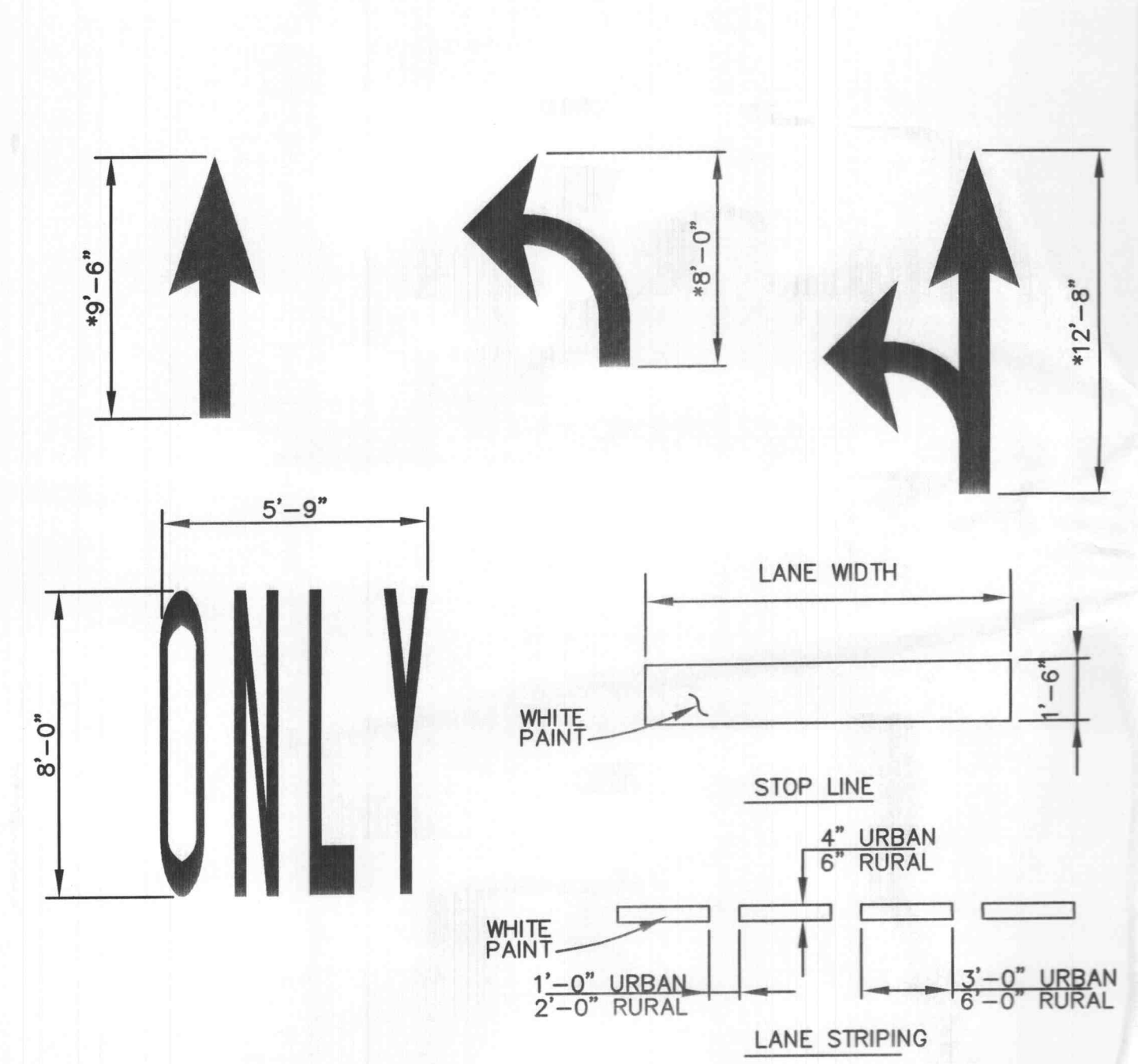
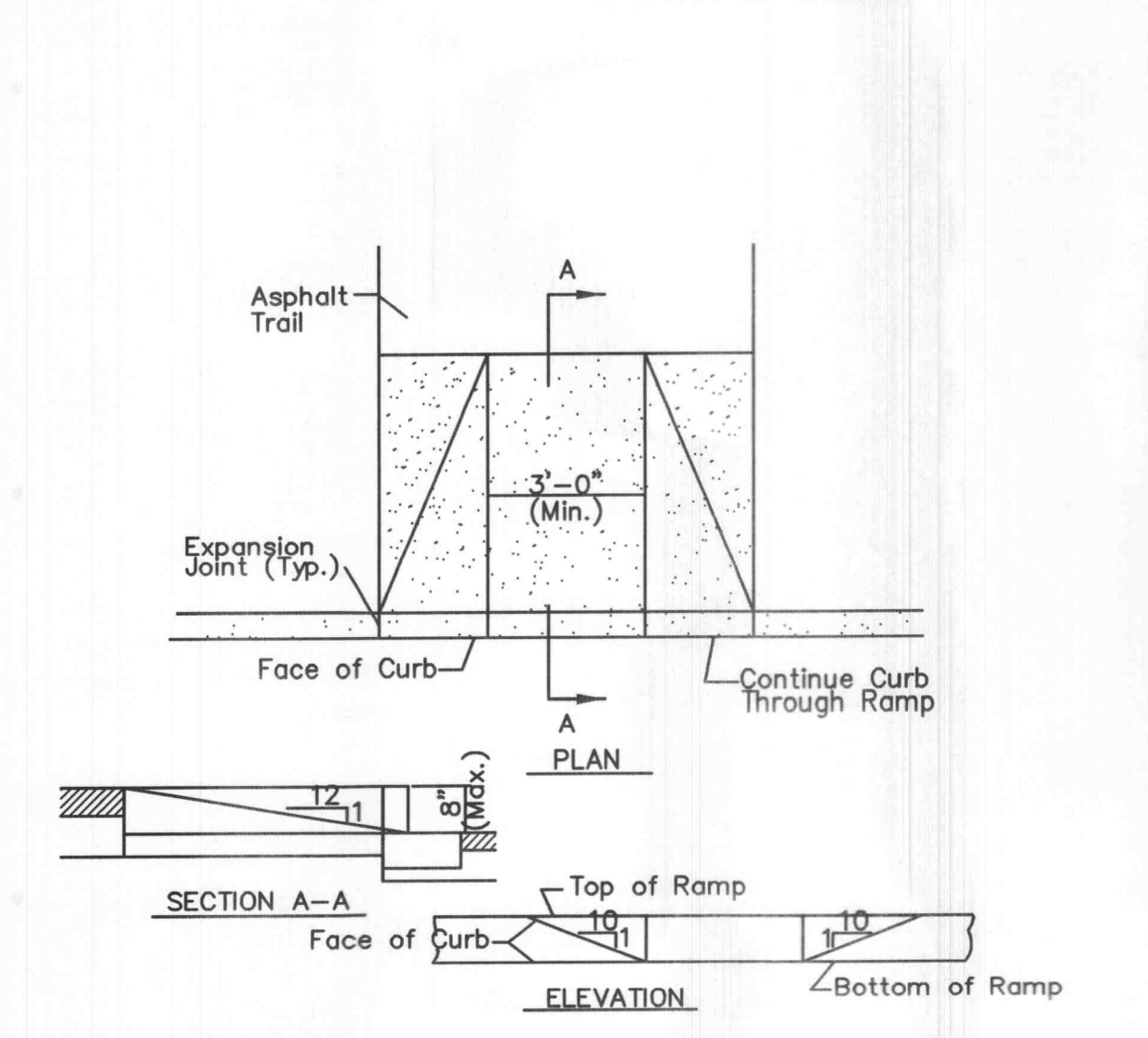


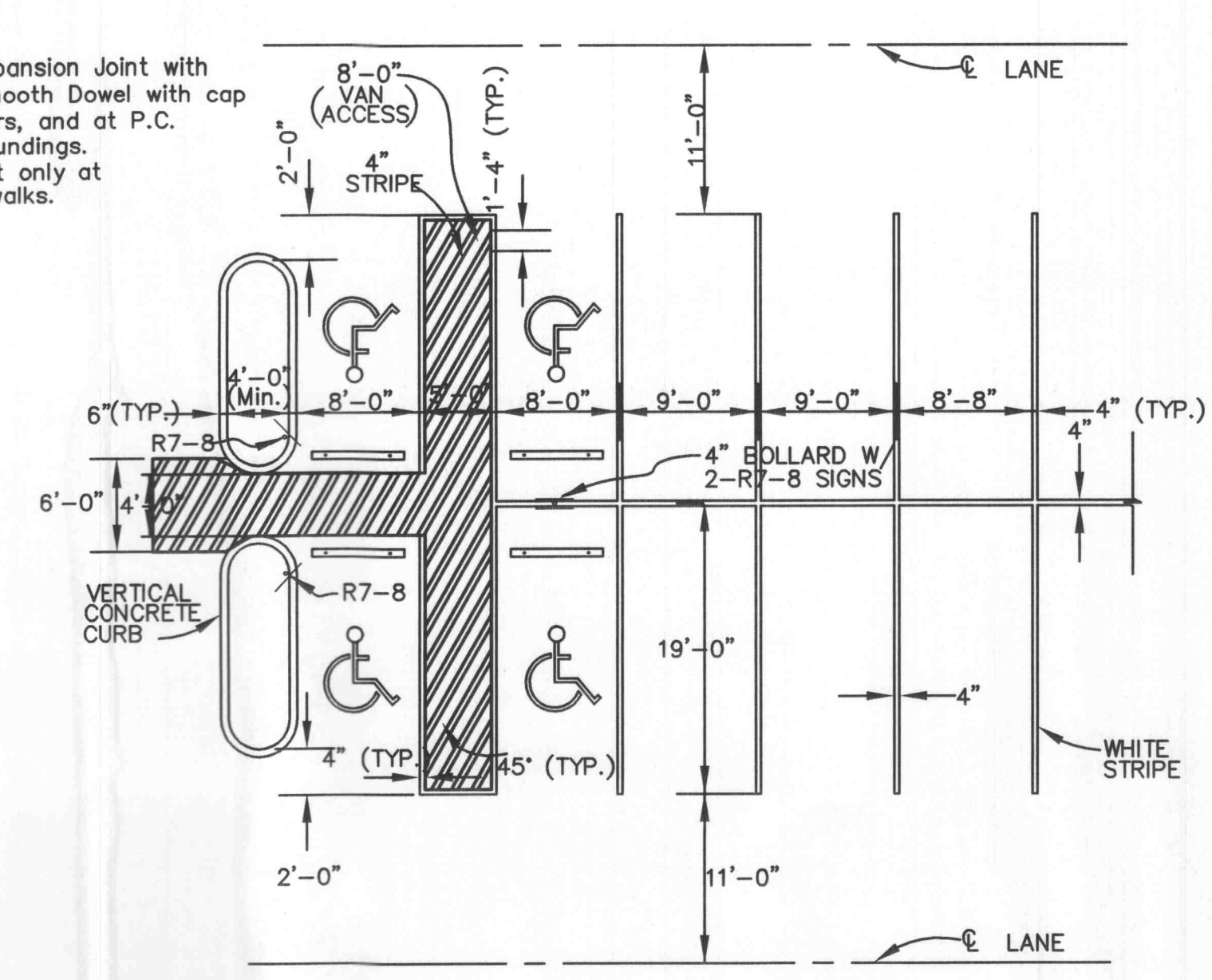
PAVEMENT DETAILS
NOT TO SCALE



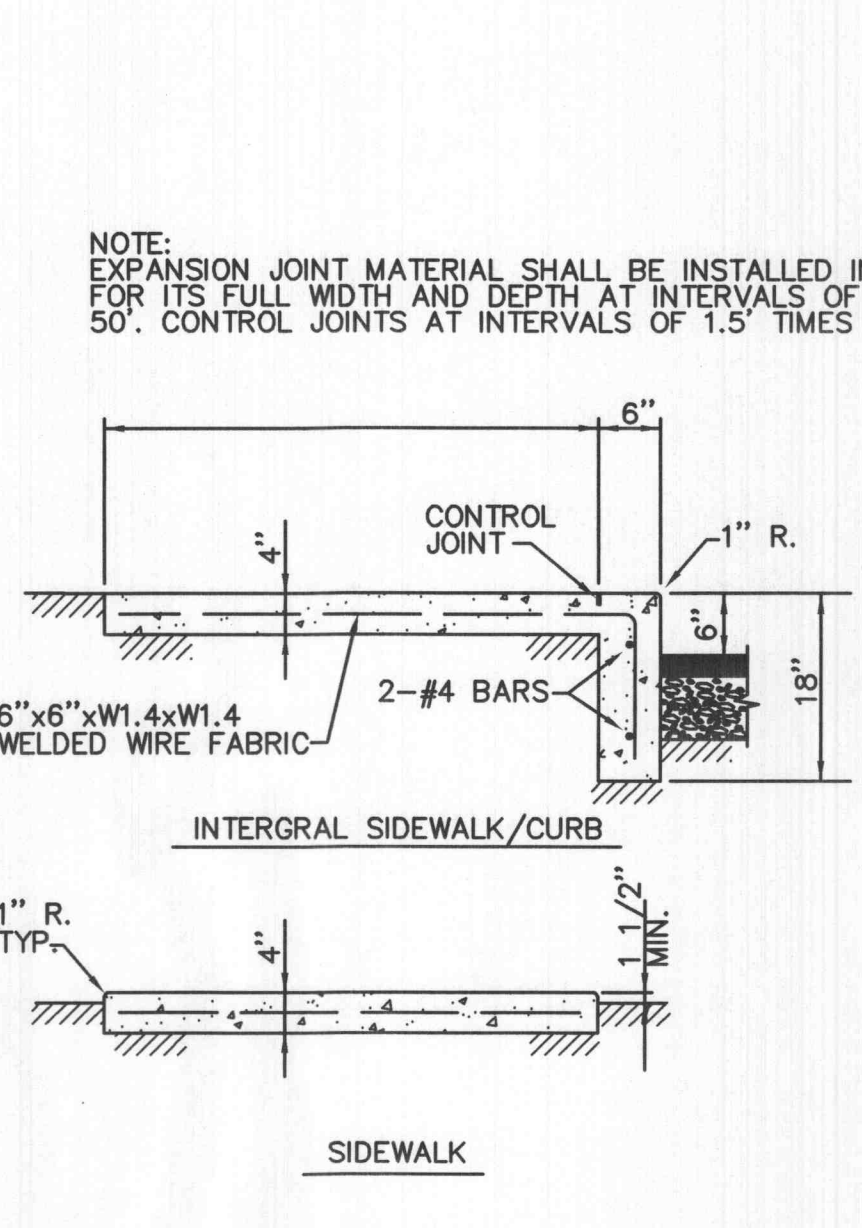
PAVEMENT MARKINGS
NOT TO SCALE



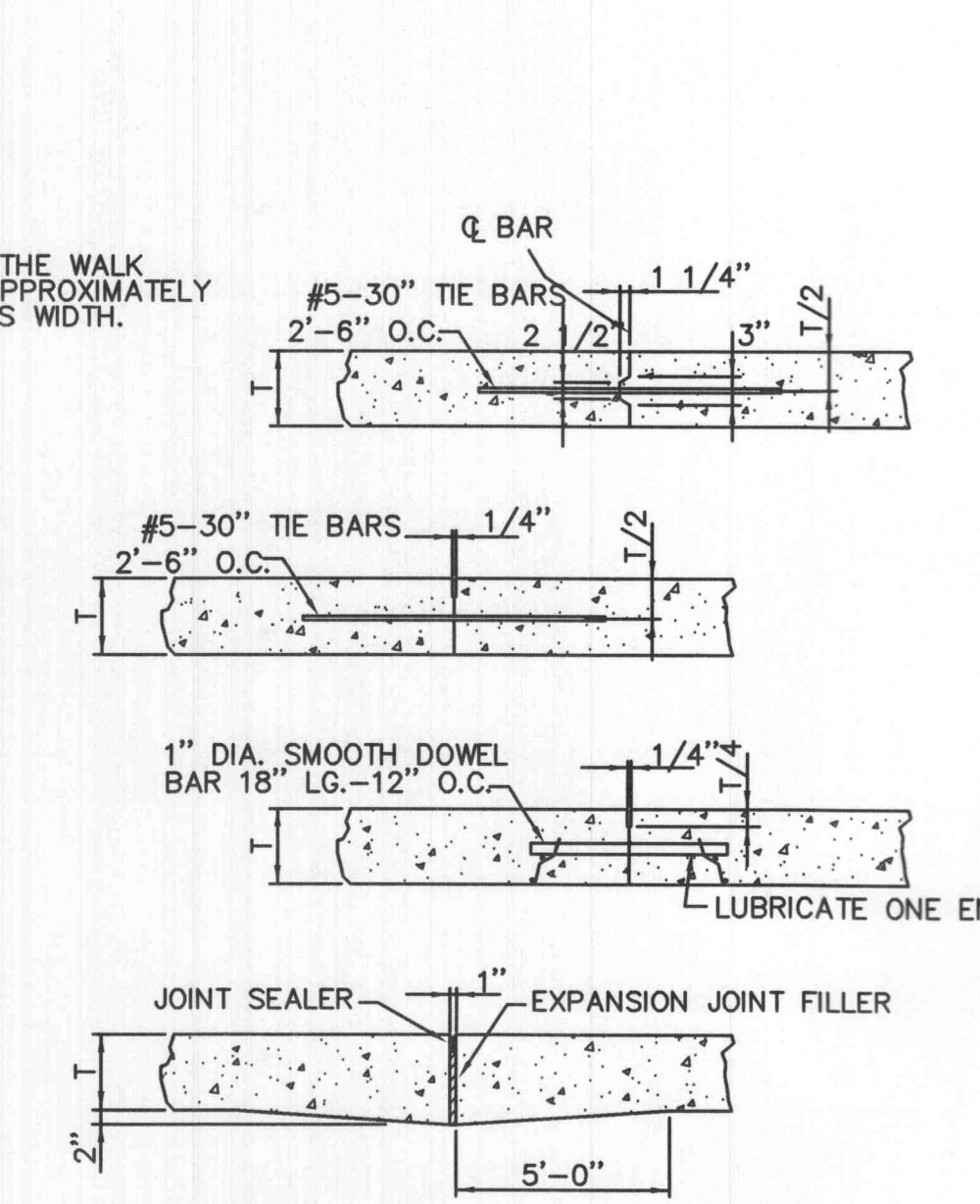
HANDICAP RAMP
(Contained Within Sidewalk)
NOT TO SCALE



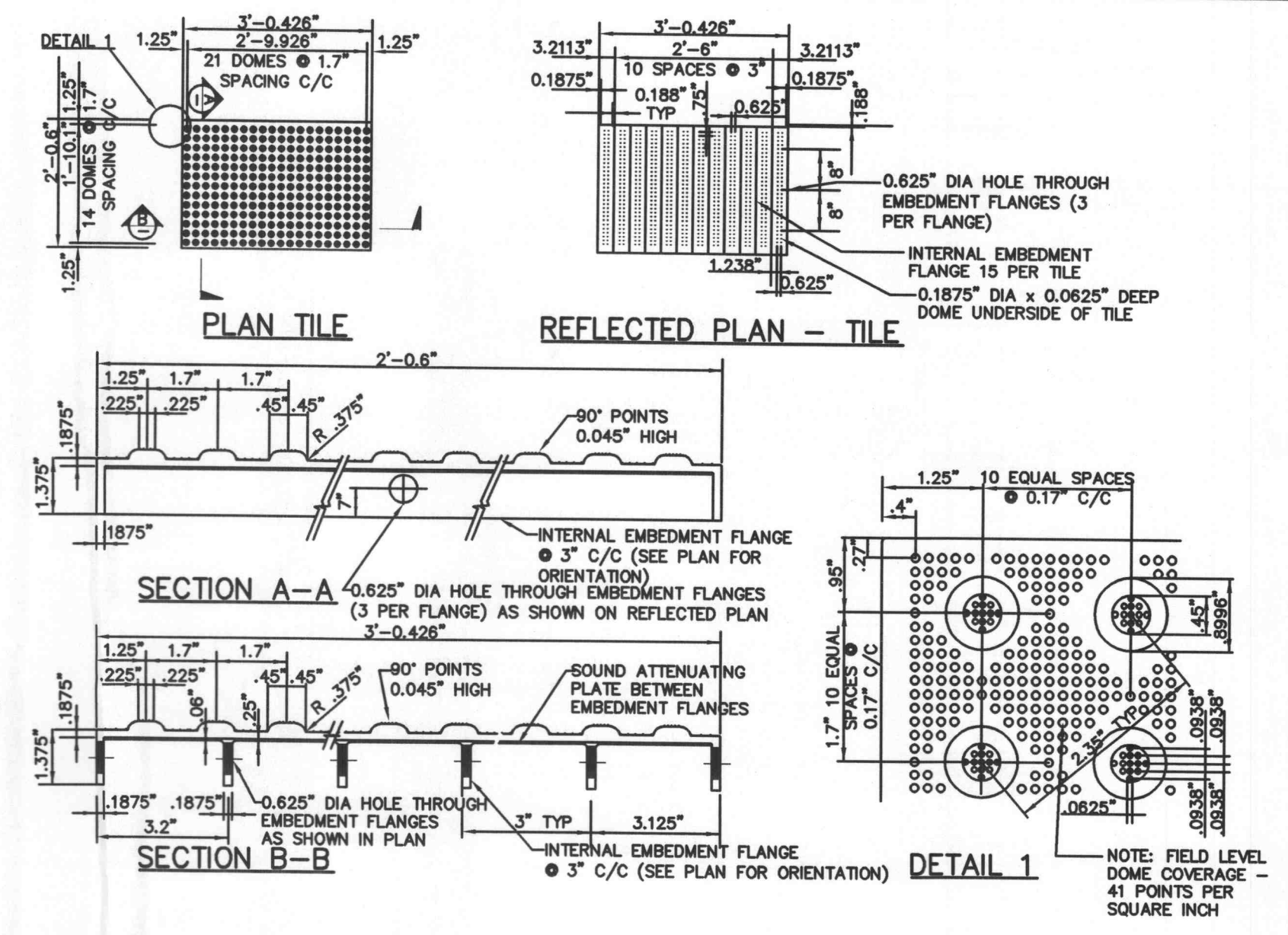
STRIPING-90 PARKING
NOT TO SCALE



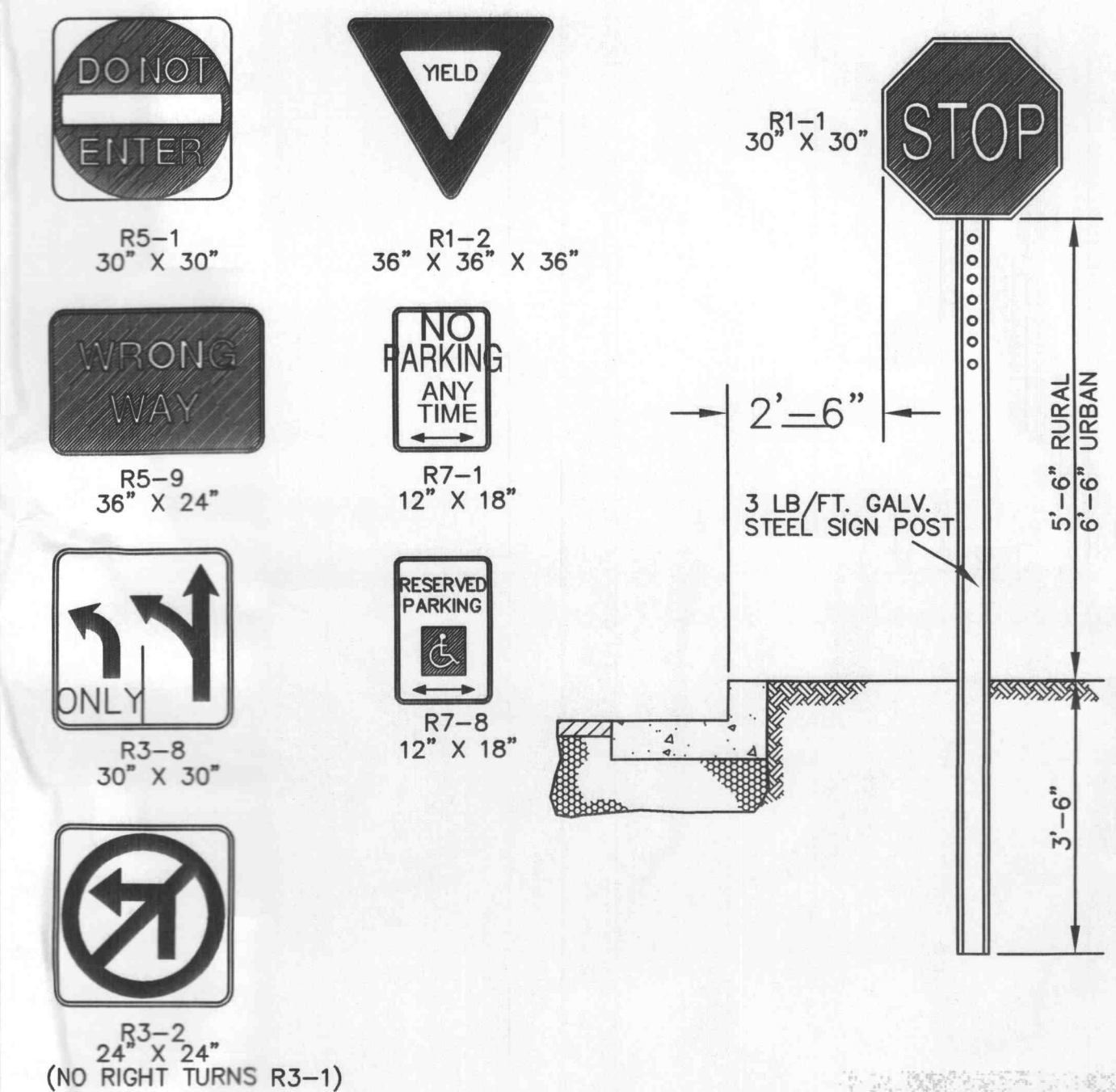
CONCRETE SIDEWALK
NOT TO SCALE



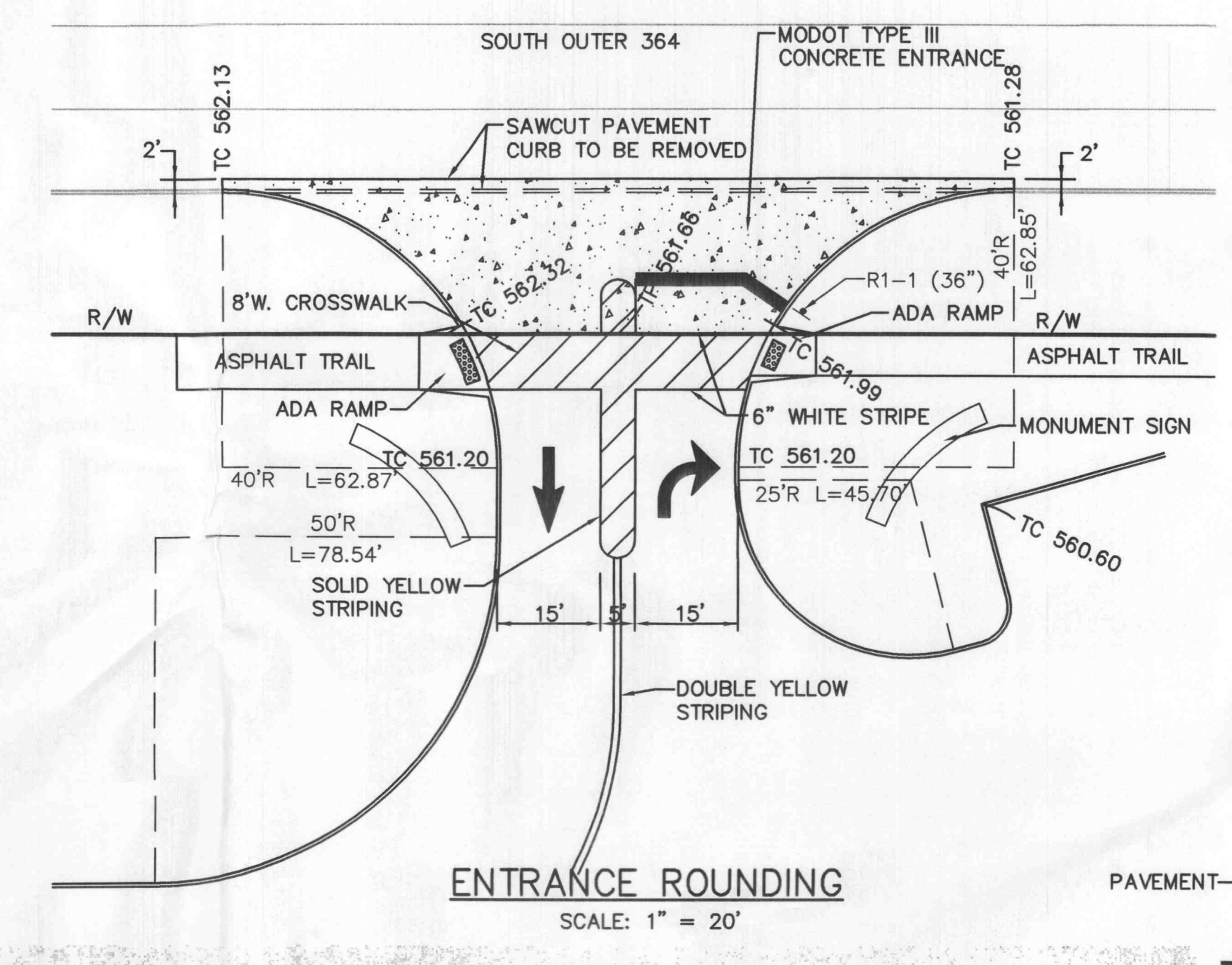
CONCRETE PAVEMENT JOINTS
NOT TO SCALE



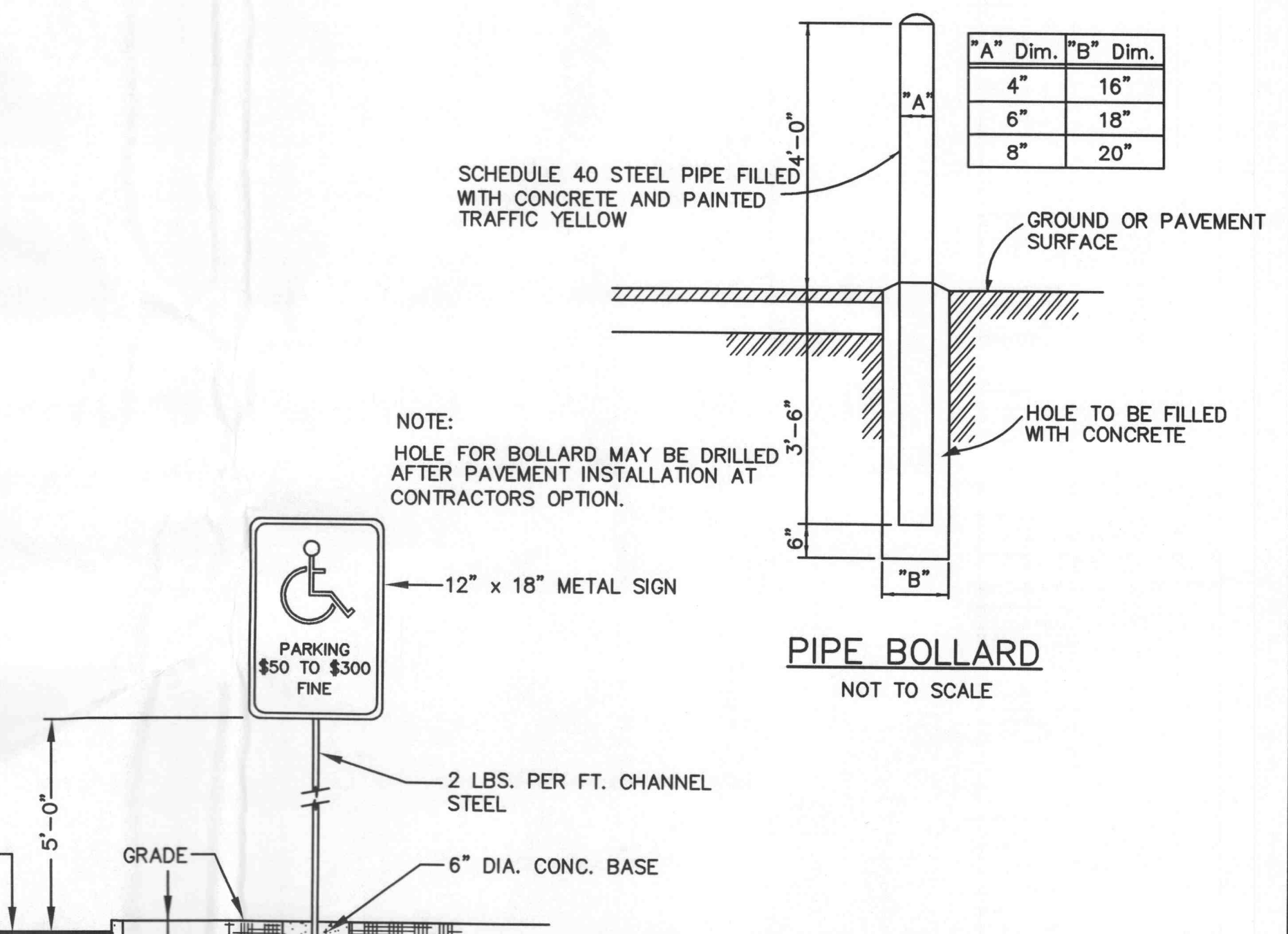
TRUNCATED DOMES
NOT TO SCALE



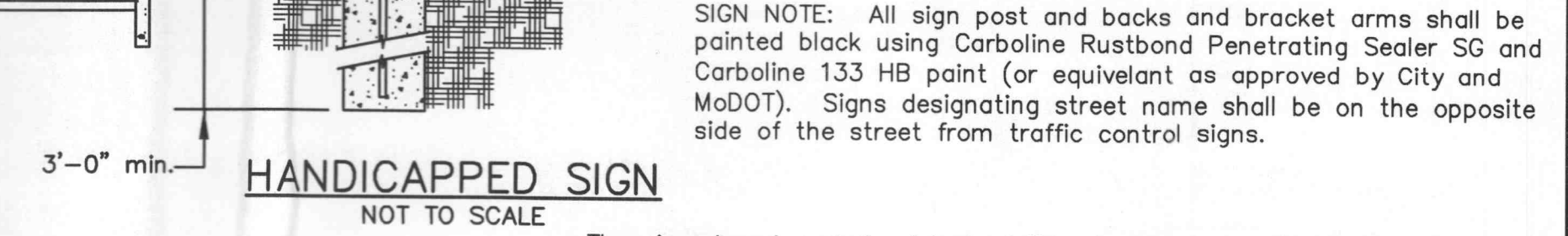
SIGN INSTALLATION
NOT TO SCALE



ENTRANCE ROUNDING
SCALE: 1" = 20'



PIPE BOLLARD
NOT TO SCALE

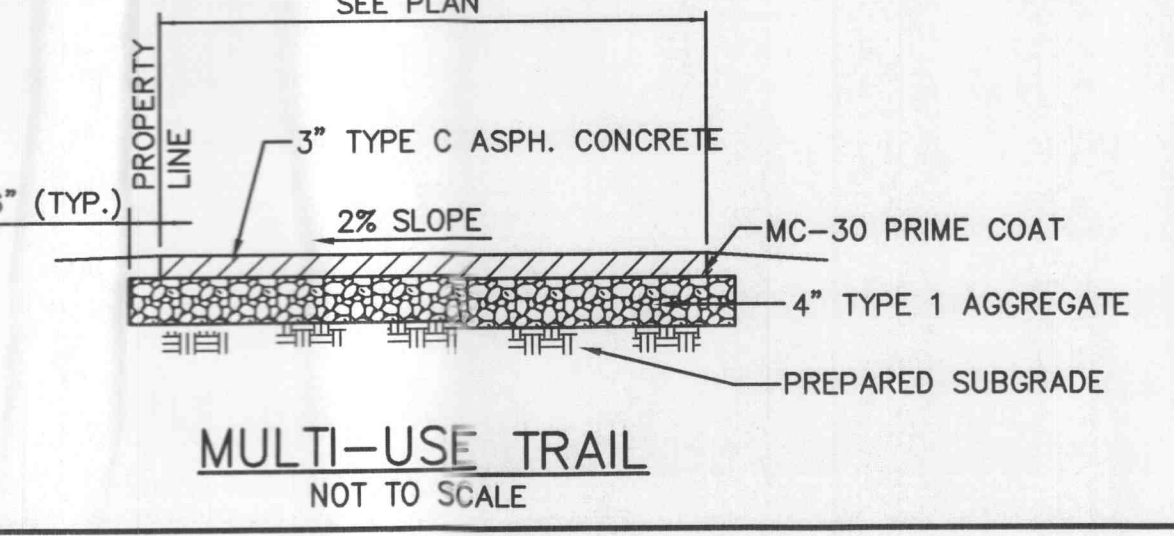


HANDICAPPED SIGN
NOT TO SCALE

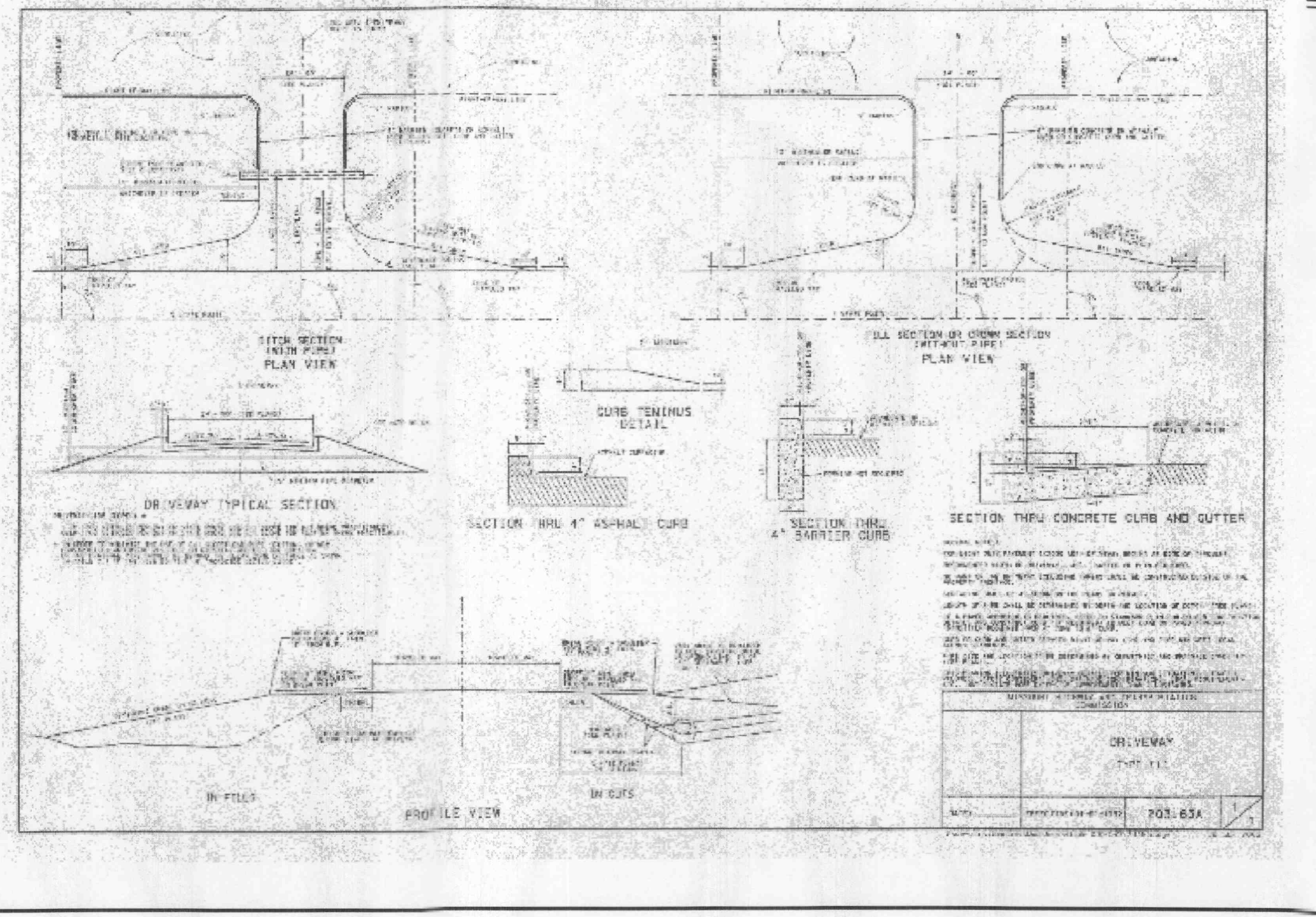
NOTES:
PROVIDE CONCRETE HANDICAP RAMP WHERE TRAIL INTERSECTS ACCESS DRIVES OR STREETS OR WHERE TRAIL INTERSECTS WITH CURBING (SEE PLAN).

PROVIDE STRIPING THROUGH THE ACCESS DRIVES OR STREETS INTO THE DEVELOPMENT.
MAXIMUM SLOPE OF THE PATH SHALL NOT EXCEED 8% AND 2% CROSS SLOPE PER CITY OF OFALLON SPECIFICATIONS.

THE TRAIL SHALL BE CONSTRUCTED WITH A CONSISTENT SLOPE WITH VERTICAL CURVES A MINIMUM OF 50' IN LENGTH. AFTER FINAL COMPRESSION, THE SURFACE SHALL BE SMOOTH AND TRUE TO THE ESTABLISHED CROWN AND GRADE. ANY LOW OR DEFECTIVE PLACES SHALL IMMEDIATELY BE REMEDIED BY CUTTING OUT THE COURSE AT SUCH SPOTS AND REPLACING IT WITH FRESH HOT MIXTURE, WHICH SHALL BE IMMEDIATELY COMPACTED TO CONFORM WITH THE SURROUNDING AREA AND SHALL BE THOROUGHLY BONDED TO IT. THE FINISHED PAVEMENT SHALL BE SET FREE FROM DEPRESSIONS EXCEEDING ONE-EIGHTH INCH AS MEASURED WITH A TEN-FOOT STRAIGHT EDGE PARALLELING THE CENTERLINE OF THE TRAIL.



MULTI-USE TRAIL
NOT TO SCALE



NOTE: All sign post and backs and bracket arms shall be painted black using Carboline Rustbond Penetrating Sealer SG and Carboline 133 HB point (or equivalent as approved by City and MoDOT). Signs designating street name shall be on the opposite side of the street from traffic control signs.

05/07/07	BID SET
REVISIONS	

PAVING DETAILS
GARDEN VILLAS OF OFALLON
Highway N and Twin Chimneys Boulevard O'Fallon, Missouri 63366
Prepared for:
DELMAR GARDENS ENTERPRISES, INC.
14805 N. Outer 40
Chesterfield, MO 63017
636-733-7000

Copyright 2007 Clayton Engineering Co. All Rights Reserved.

the clayton engineering company, inc.
ENGINEERS • SURVEYORS • PLANNERS
11920 WESTLINE INDUSTRIAL DRIVE
ST. LOUIS, MISSOURI 63146
(314) 692-8888 FAX: (314) 692-8688
clayton-engineering.com

Designed: RKF
Drawn: RKF
Checked: MUV
Date: 04/25/07
Project Number: 00228.10
Sheet Number: C-10 of 18