

**VEGETATION ESTABLISHMENT**

- TILLAGE PREPARATION**  
 • ENSURE TOP 4" IS NOT COMPACTED
- FERTILITY**  
 • A SOIL TEST RUN ON COMPOSITE SAMPLE SITE WILL GIVE OPTIMUM RESULTS.  
 • IN LIEU OF SOIL TEST RESULTS, THE FOLLOWING RATES WILL COVER THE MAJORITY OF SITUATIONS.

	LBS. / ACRE		
	N	P	K
TEMPORARY SEEDING	30	30	600 ENM+
PERMANENT	45	65	600 ENM+

+ SOIL TEST RESULTS TAKE PRECEDENCE, DUE TO HIGHLY VARIABLE SOIL pH.

**SEEDING RATES**

**TEMPORARY**

MILLETS	25 LBS. / ACRE
WHEAT OR RYE	150 LBS. / ACRE
OATS	120 LBS. / ACRE

**PERMANENT**

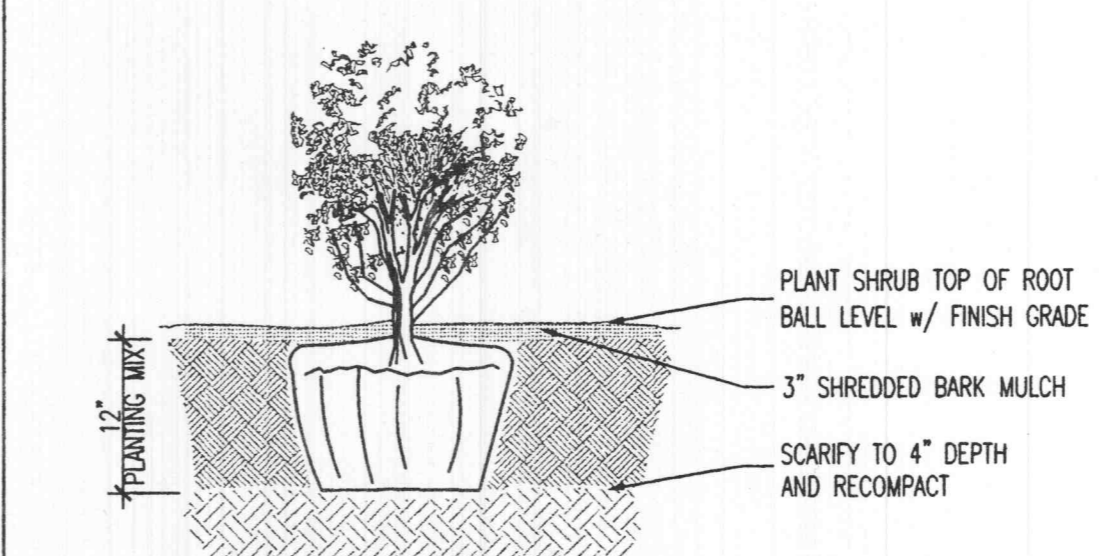
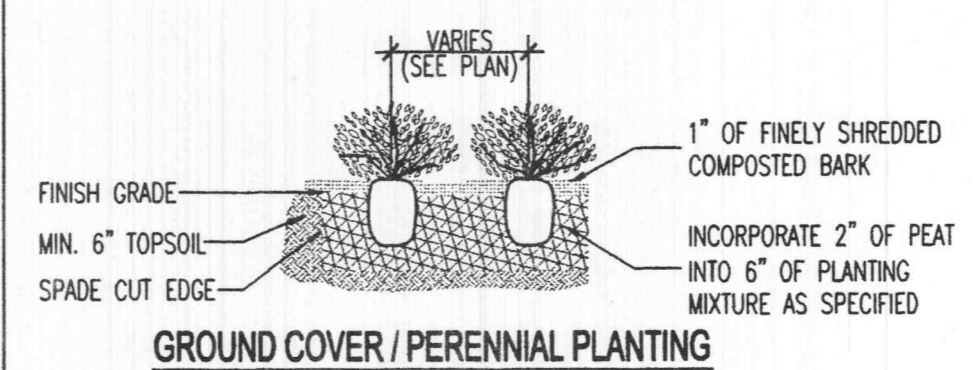
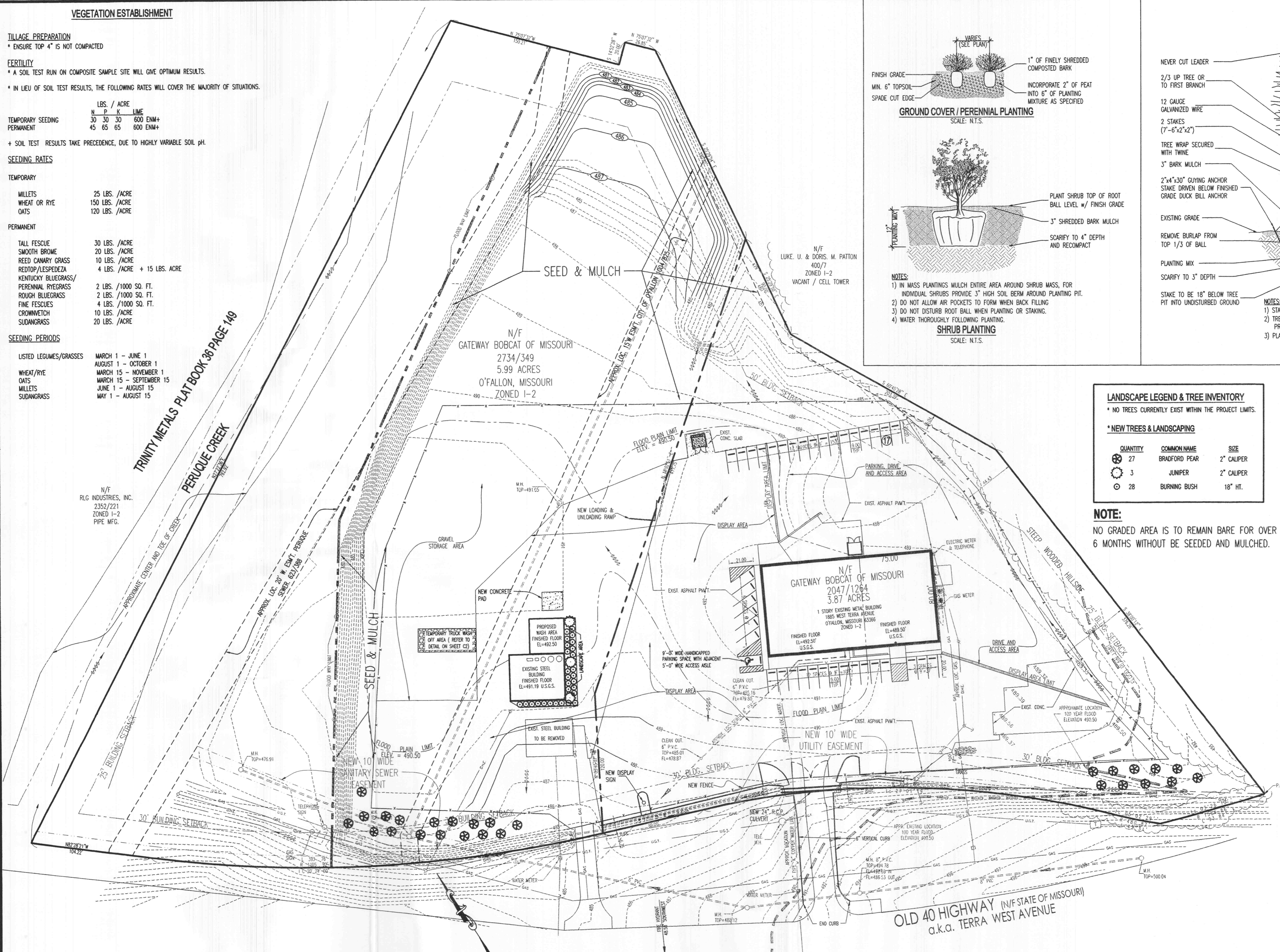
TALL FESCUE	30 LBS. / ACRE
SMOOTH BROME	20 LBS. / ACRE
REED CANARY GRASS	10 LBS. / ACRE
REEDTOP/LESPEDEZA	4 LBS. / ACRE + 15 LBS. ACRE
KENTUCKY BLUEGRASS/	
PERENNIAL RYEGRASS	2 LBS. / 1000 SQ. FT.
ROUGH BLUEGRASS	2 LBS. / 1000 SQ. FT.
FINE FESCUES	4 LBS. / 1000 SQ. FT.
CROWNWETCH	10 LBS. / ACRE
SUDANGRASS	20 LBS. / ACRE

**SEEDING PERIODS**

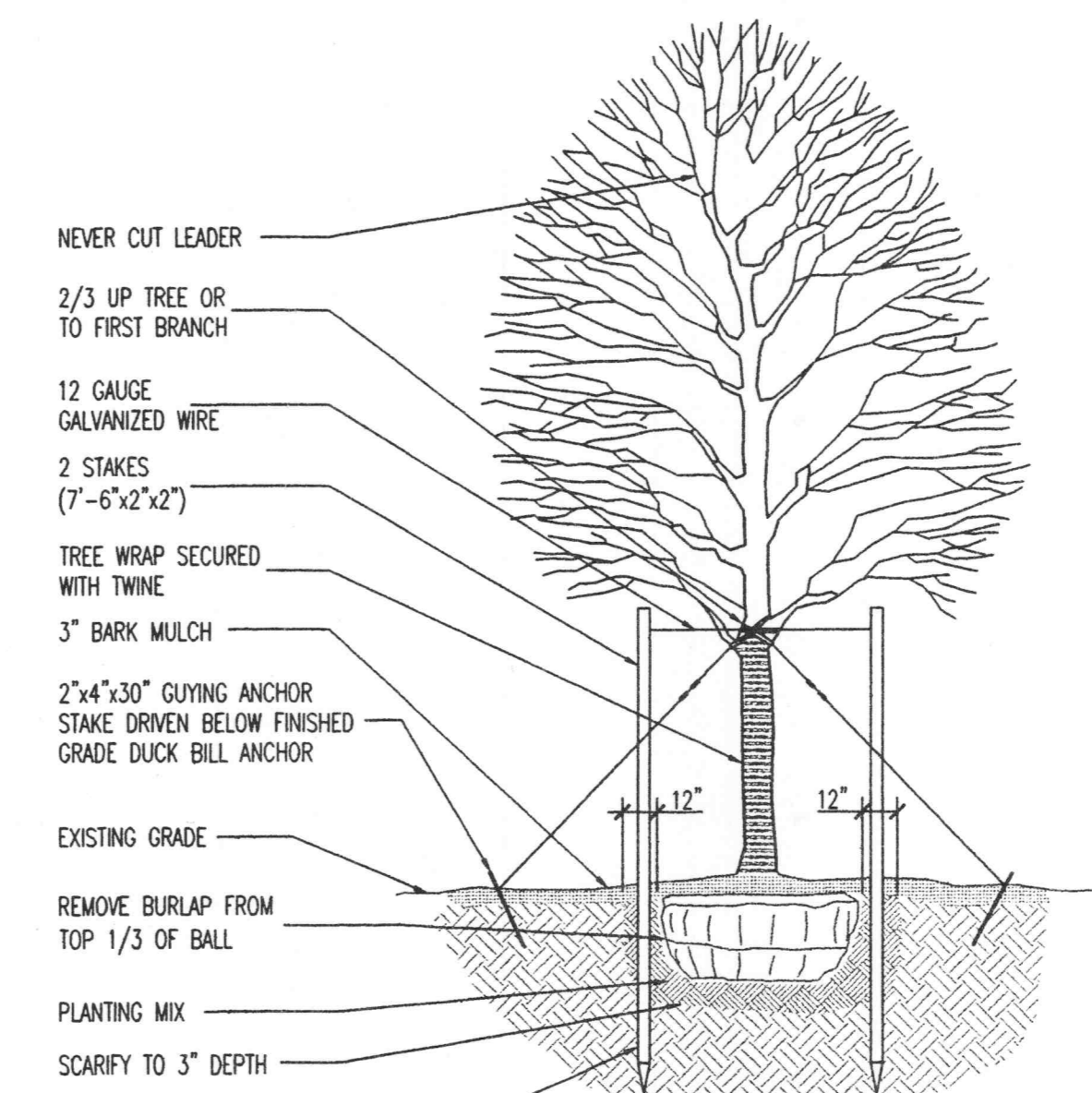
LISTED LEGUMES/GRASSES	PERIOD
WHEAT/RYE	MARCH 1 - JUNE 1
OATS	AUGUST 1 - OCTOBER 1
MILLETS	MARCH 15 - NOVEMBER 1
SUDANGRASS	MARCH 15 - SEPTEMBER 15
	JUNE 1 - AUGUST 15
	MAY 1 - AUGUST 15

N/F  
 RLG INDUSTRIES, INC.  
 2352/221  
 ZONED I-2  
 PIPE MFG.

TRINITY METALS PLAT BOOK 38 PAGE 149  
 PERIQUÉ CREEK  
 APPROXIMATE CENTER AND TOE OF CREEK



- NOTES:**
- 1) IN MASS PLANTINGS MULCH ENTIRE AREA AROUND SHRUB MASS, FOR INDIVIDUAL SHRUBS PROVIDE 3" HIGH SOIL BERM AROUND PLANTING PIT.
  - 2) DO NOT ALLOW AIR POCKETS TO FORM WHEN BACK FILLING.
  - 3) DO NOT DISTURB ROOT BALL WHEN PLANTING OR STAKING.
  - 4) WATER THOROUGHLY FOLLOWING PLANTING.



- NOTES:**
- 1) STAKE TREES UNDER 3" CALIPER, GUY TREES 3" CALIPER AND OVER.
  - 2) TREES SHALL BEAR SAME RELATION TO FINISHED GRADE AS IT BORE TO PREVIOUS GRADE EXCEPT IN AREAS OF COMPACTED FILL.
  - 3) PLANT TREES SO COLLAR IS 4" TO 6" ABOVE FINISHED GRADE.

**LANDSCAPE LEGEND & TREE INVENTORY**

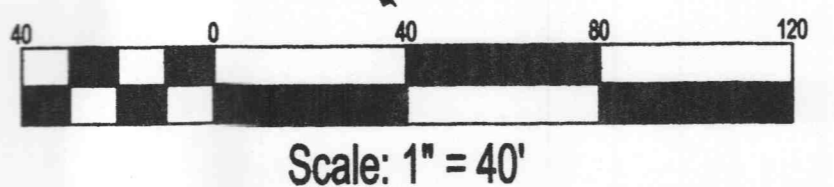
\* NO TREES CURRENTLY EXIST WITHIN THE PROJECT LIMITS.

**\* NEW TREES & LANDSCAPING**

QUANTITY	COMMON NAME	SIZE
27	BRADFORD PEAR	2" CALIPER
3	JUNIPER	2" CALIPER
28	BURNING BUSH	18" HT.

**NOTE:**

NO GRADED AREA IS TO REMAIN BARE FOR OVER 6 MONTHS WITHOUT BE SEEDED AND MULCHED.



**LANDSCAPE PLAN**



THE PROFESSIONAL SEAL AND SIGNATURE APPLY ONLY TO THIS DOCUMENT. THE PROFESSIONAL ENGINEER EXPRESSLY DISCLAIMS ANY LIABILITY FOR ANY OTHER PLANS, SPECIFICATIONS, ESTIMATES, REPORTS, OR OTHER DOCUMENTS PREPARED BY HIM OR HER. THIS SEAL IS TO BE USED FOR ANY PART OR PARTS OF THE PROJECT TO WHICH IT APPLIES.  
 © COPYRIGHT 2002 FRONTENAC ENGINEERING GROUP, INC.

NO.	DATE	REVISIONS	DESCRIPTIONS
3	9/15/02	e.h.y. Revisions	Comments
2	7/25/02	CITY REVIEW COMMENTS	
1	5/30/02	P & Z COMMENTS	

CIVIL / STRUCTURAL / LAND SURVEYING  
 #16 SUNNEN DRIVE, SUITE 165  
 ST. LOUIS, MISSOURI 63143  
 (314) 644-2200 FAX (314) 644-0645  
 EMAIL: MAIL@FRONTENACENGINEERING.COM



DATE:	5/30/02
CHECKED:	W.K.B.
DRAWN:	R.J.R.
SCALE:	1" = 40'

LANDSCAPE PLAN  
**GATEWAY BOBCAT OF O'FALLON**  
 1885 WEST TERRA AVENUE,  
 O'FALLON MO. 63366

SHEET NO. **L1**  
 1 OF 1