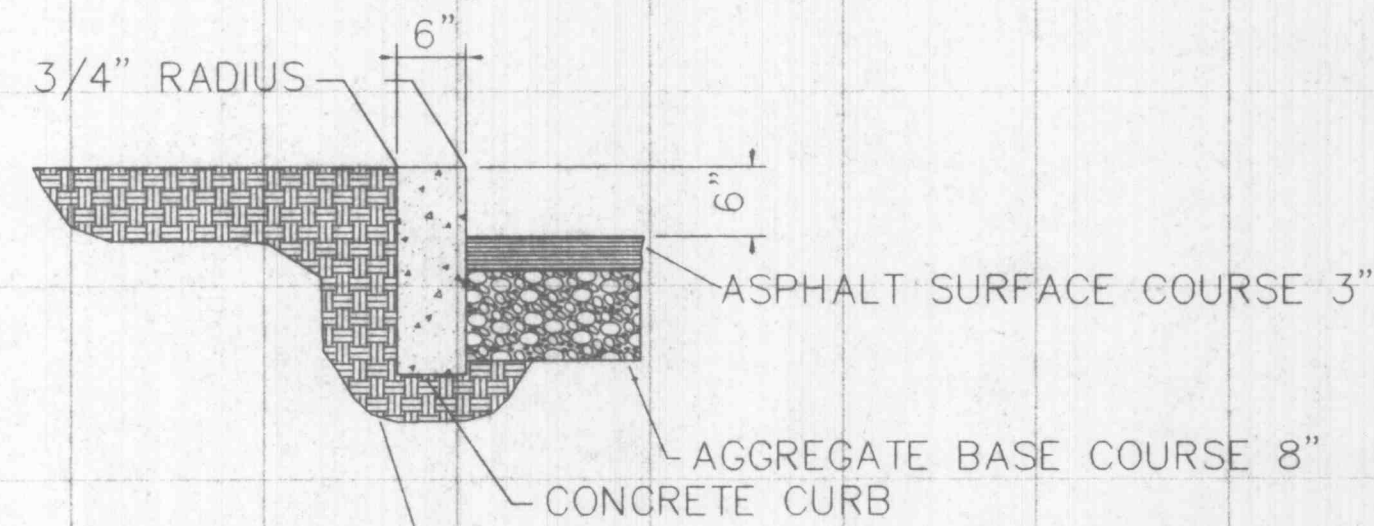


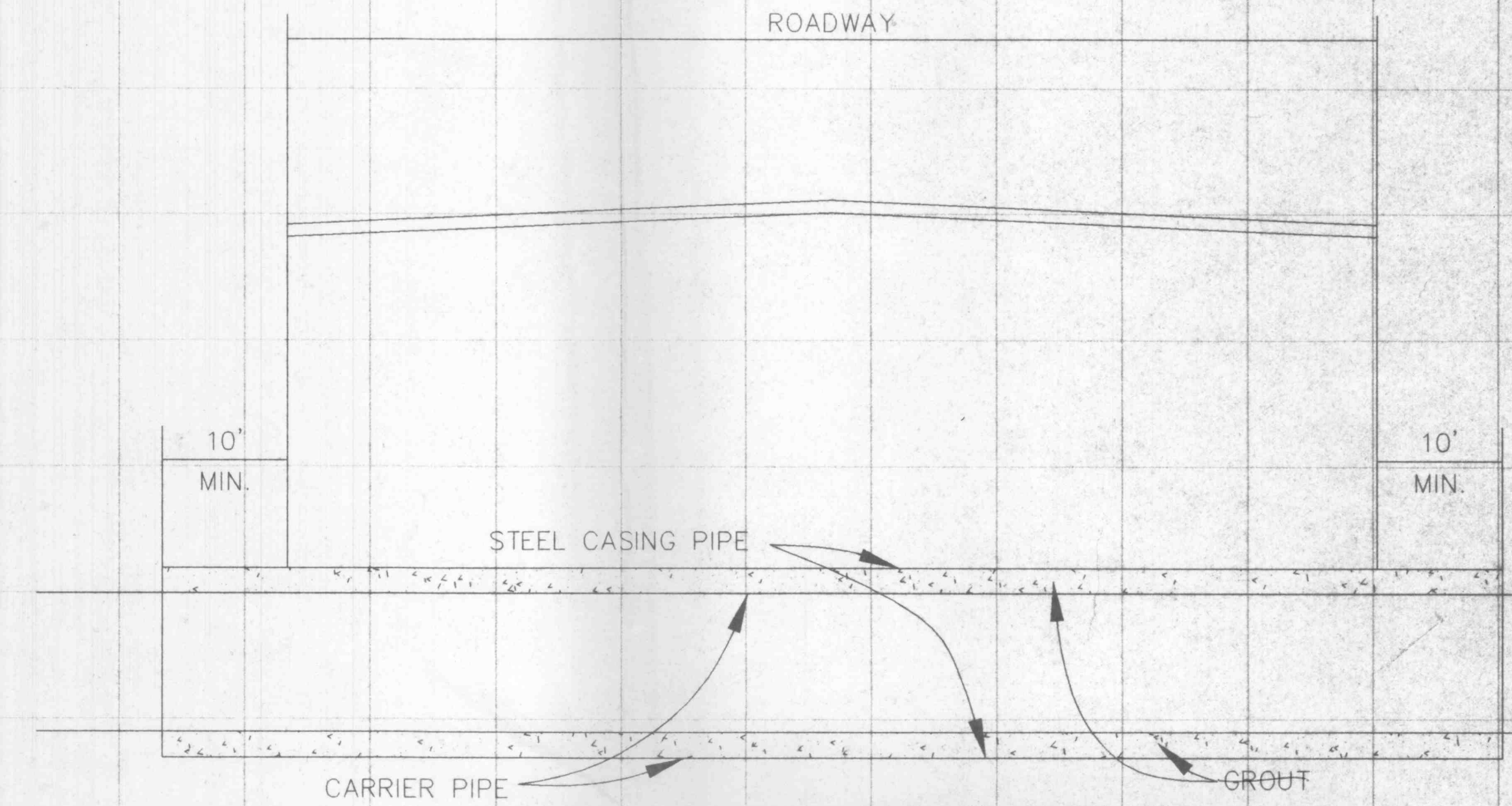
-PROVIDE ONE SIGN PER HANDICAPPED SPACE.
 -NO STEPS AT BUILDING ENTRANCES.
 -PROVIDE RAMPS OR DROP CURBS AT HANDICAPPED SPACES.
 -PROVIDE 60' X 60' AREA OUTSIDE ENTRANCE FOR WHEELCHAIR MANEUVERABILITY.

HANDICAPPED PARKING SIGN

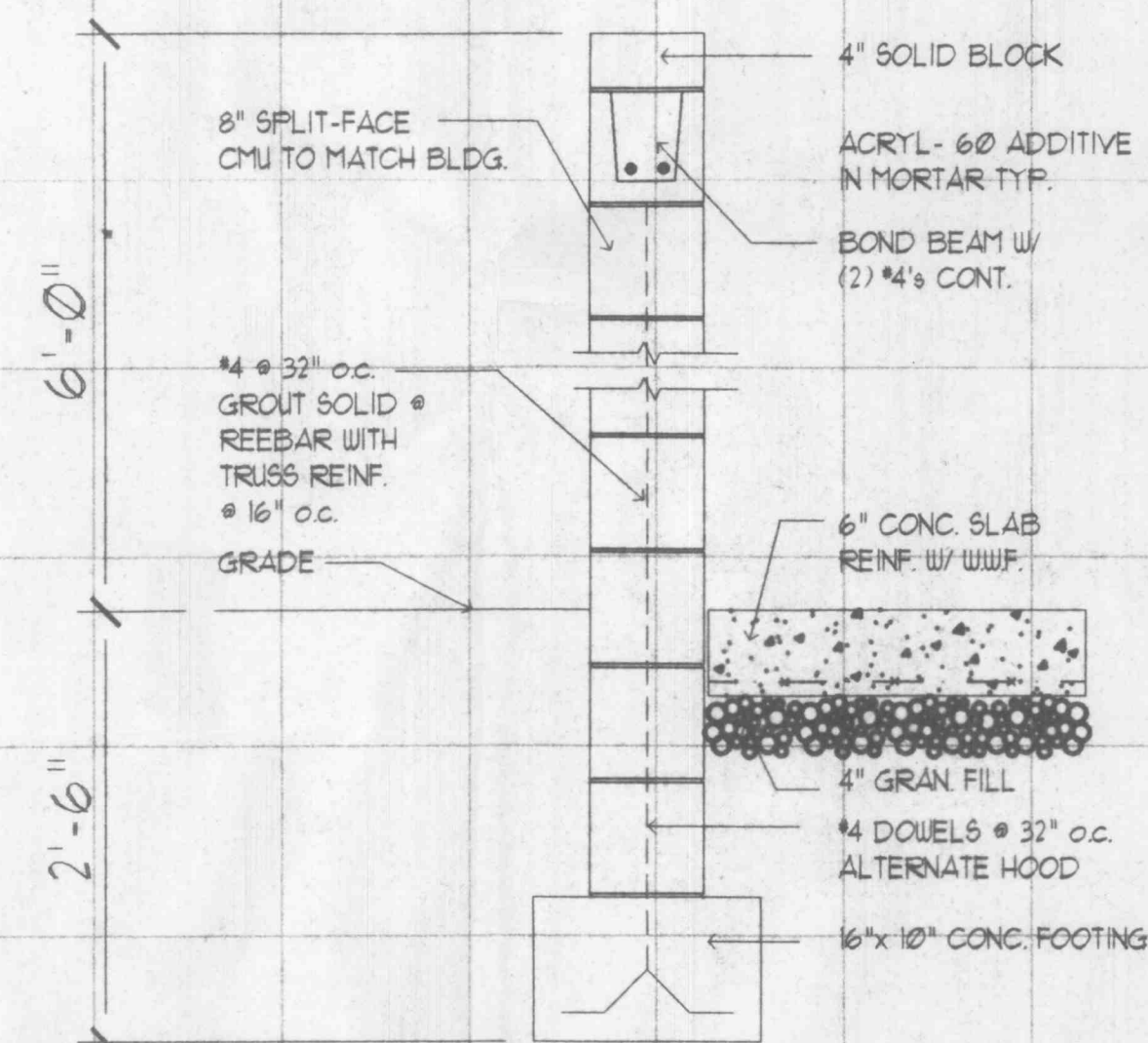


PREPARED SUBGRADE COMPACTED TO 95% MAXIMUM DENSITY

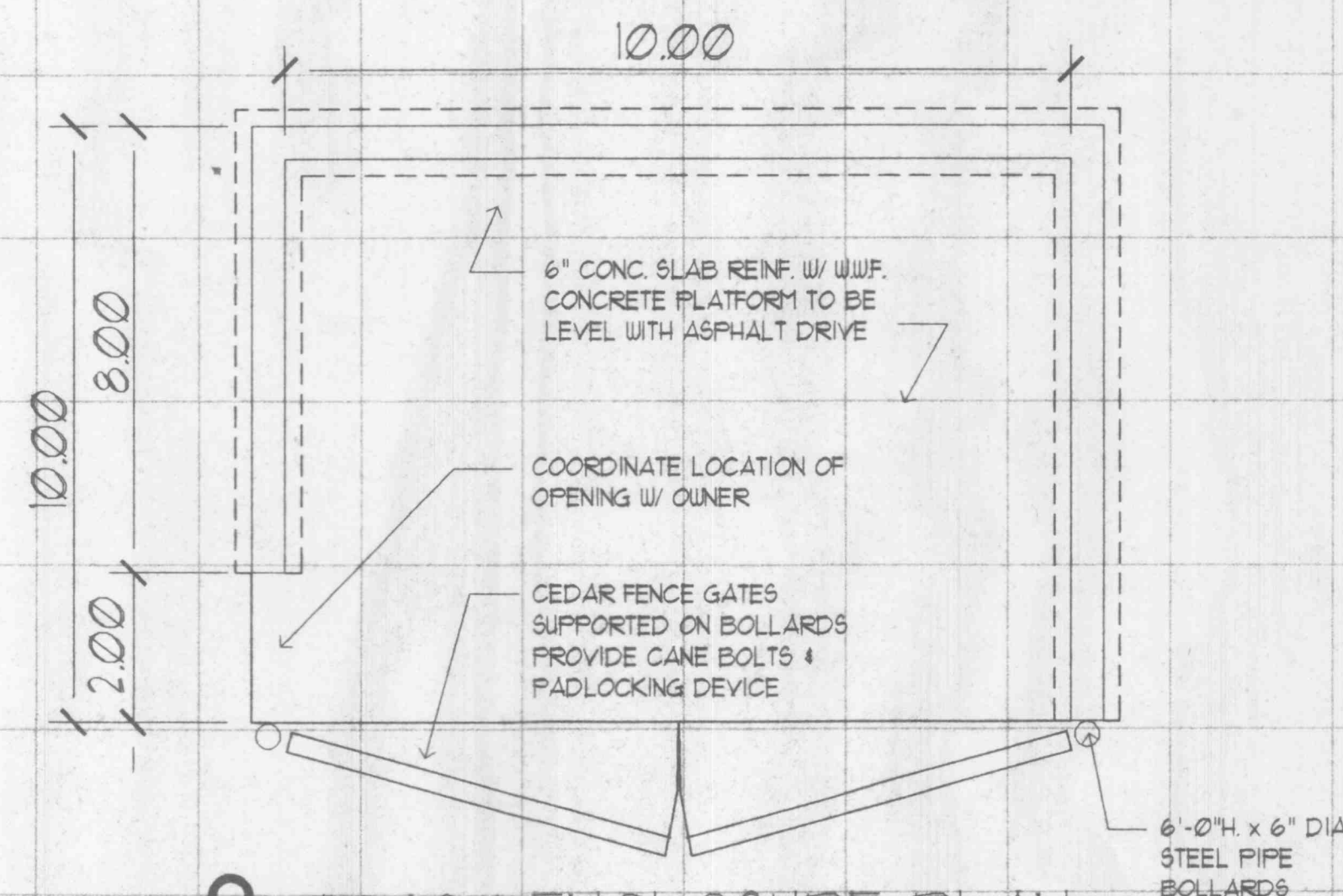
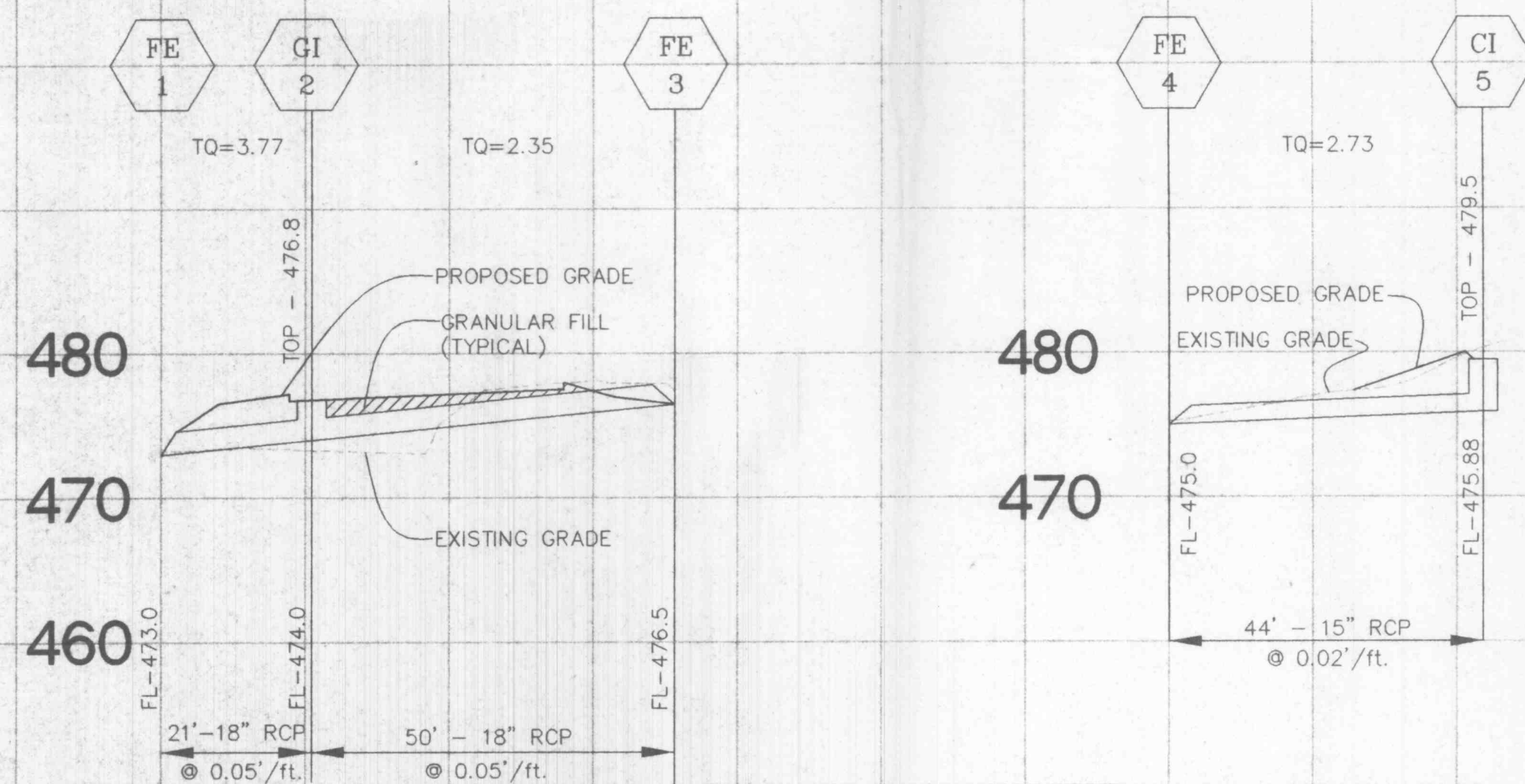
6" VERTICAL CONCRETE CURB



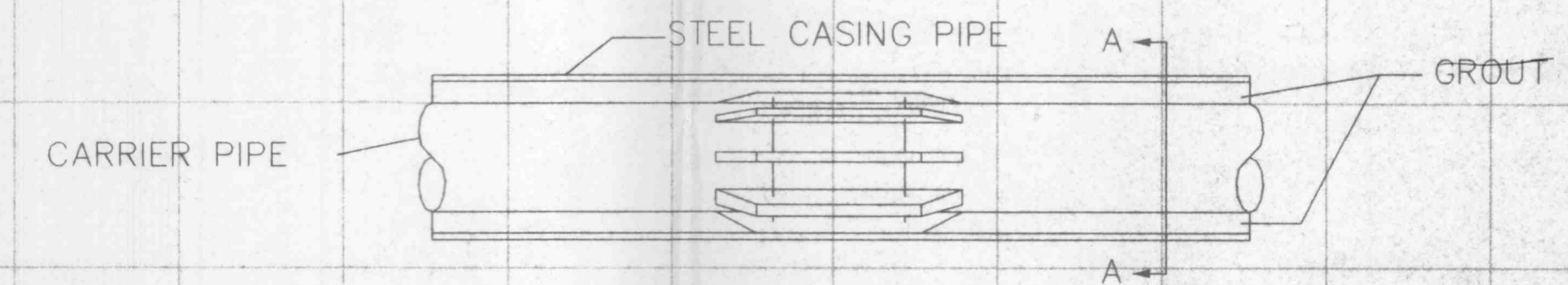
- NOTE:
1. INSIDE DIAMETER OF CASING PIPE TO BE MINIMUM OF 4" GREATER THAN COUPLING DIAMETER OF CARRIER PIPE.
 2. ENCASEMENTS TO BE INSTALLED UNDER THE ROAD BY MEANS OF JACKING IT, OR BY DRY-BORING A HOLE THAT WILL RECEIVE THE CASING WITH A SNUG FIT.
 3. THE OUTSIDE DIAMETER OF THE CASING SHALL NOT BE LESS THAN, NOR MORE THAN ONE INCH GREATER THEN THE BORING HOLE.
 4. THE ANNULAR SPACE BETWEEN THE CASING PIPE AND THE BORED HOLE SHALL BE FILLED WITH GROUT.



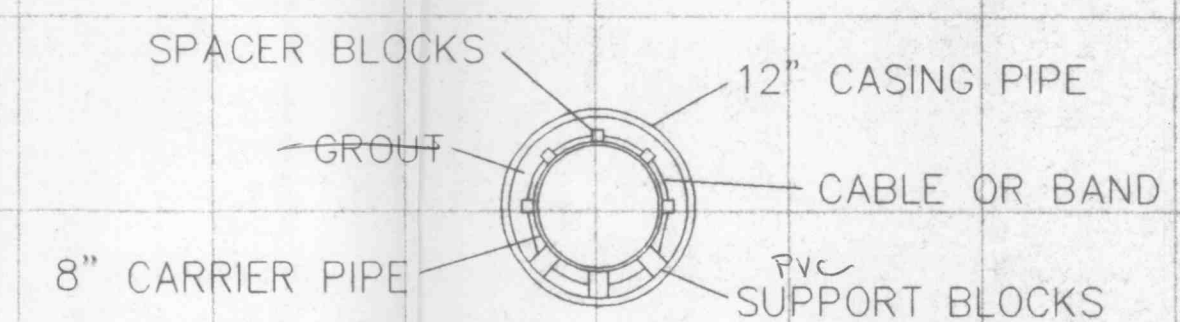
1 TRASH ENCLOSURE DETAIL



2 TRASH ENCLOSURE PLAN



SUPPORT OF CARRIER PIPE



SECTION A - A