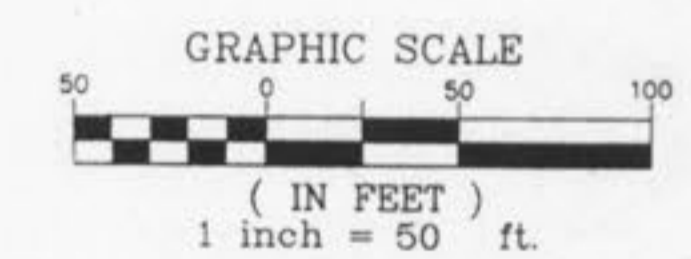


**GLENMARO
FLAT PLAN**

AUGUST, 1995 05-059
 Rev. 8-31-95 to CRD
 Rev. 9-25-95 to DAI 102 to AI 102
 Rev. 10-4-95 to FOR CITY OF OXALON

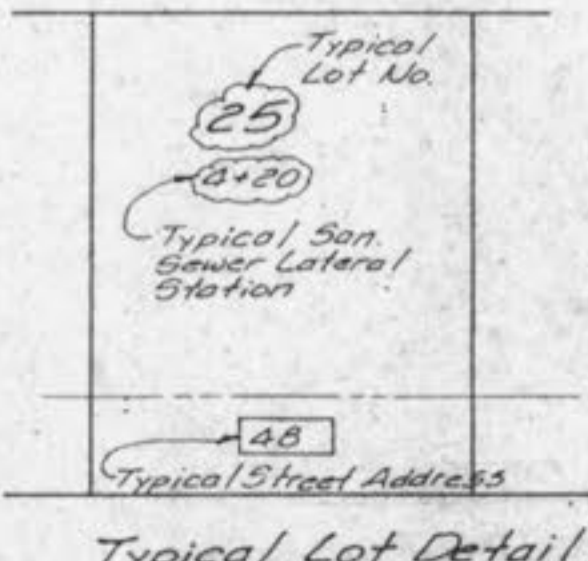
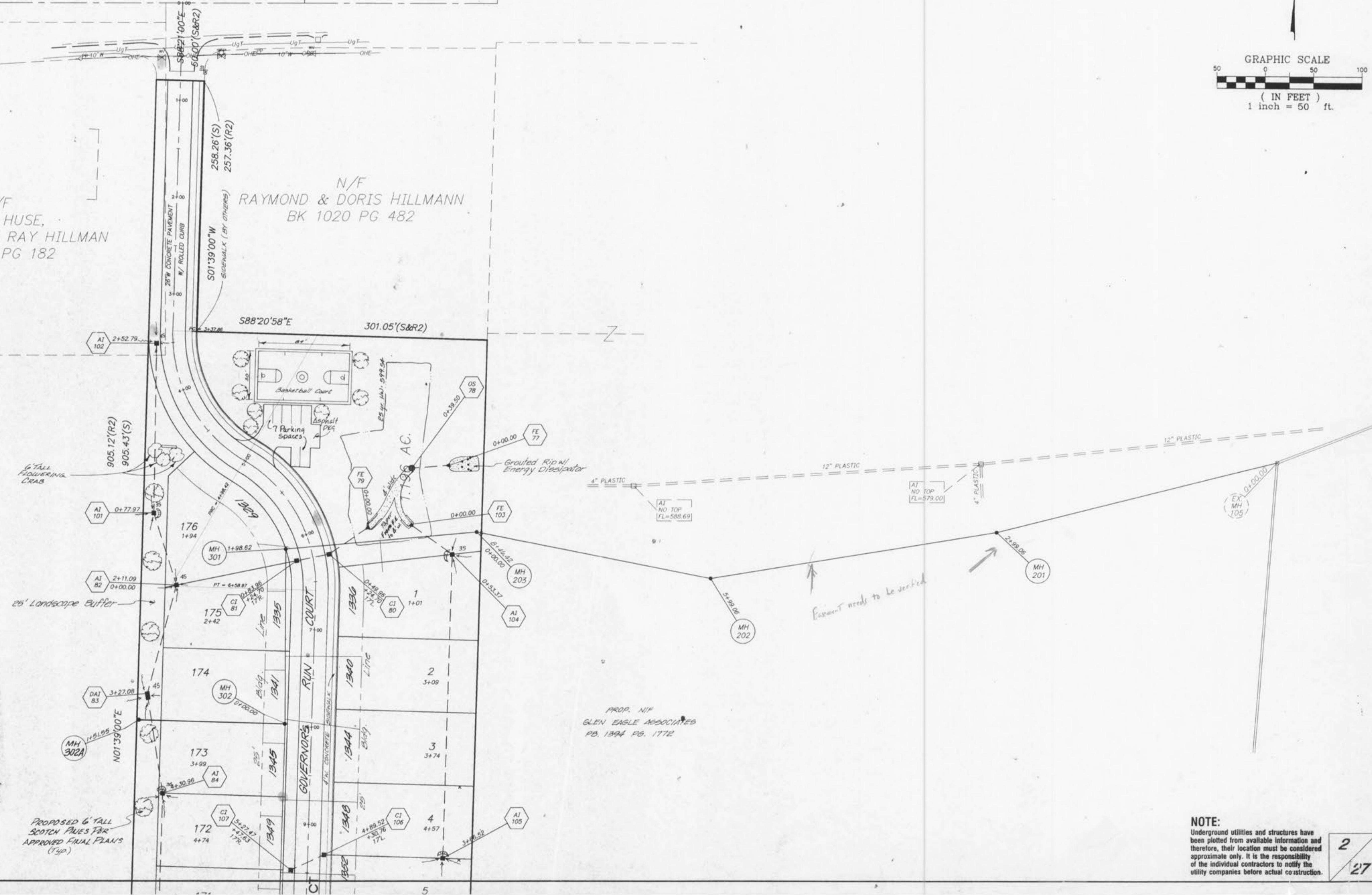


N/F
 CLEM & ESTHER HUSE
 BK 734 PG 1423

MEXICO ROAD
 (VARIABLE WIDTH)
 (FORMERLY HILLMANN ROAD)

N/F
 ESTHER HUSE,
 ROY HILLMAN & RAY HILLMAN
 BK 1452 PG 182

N/F
 RAYMOND & DORIS HILLMANN
 BK 1020 PG 482



PROPOSED 6' TALL
 SCOTCH PINES FOR
 APPROVED FINAL PLAN'S
 (Typ)

PROP. N/F
 GLEN EAGLE ASSOCIATES
 PB. 1394 PG. 1772

NOTE:
 Underground utilities and structures have been plotted from available information and therefore, their location must be considered approximate only. It is the responsibility of the individual contractors to notify the utility companies before actual construction.