

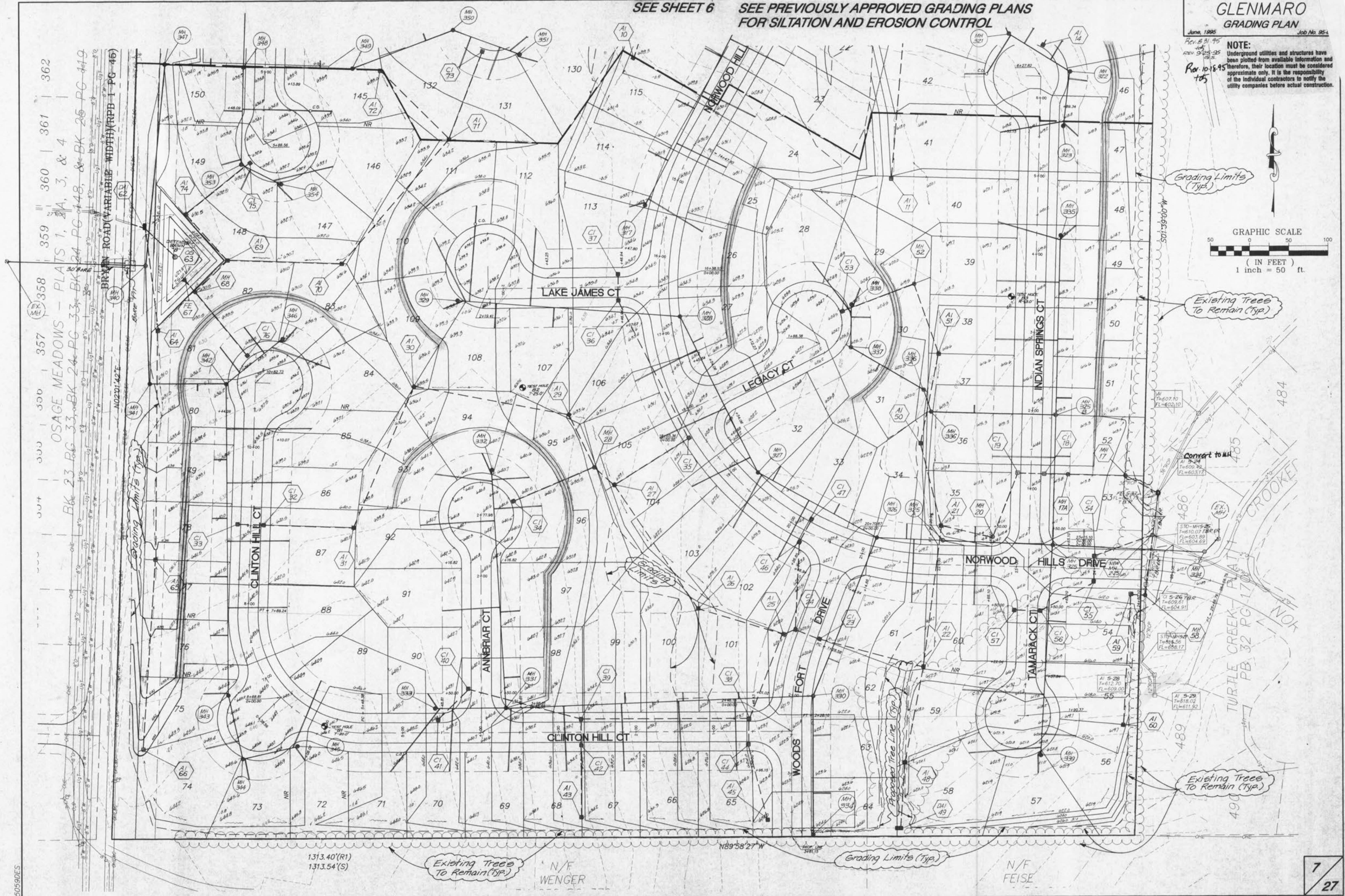
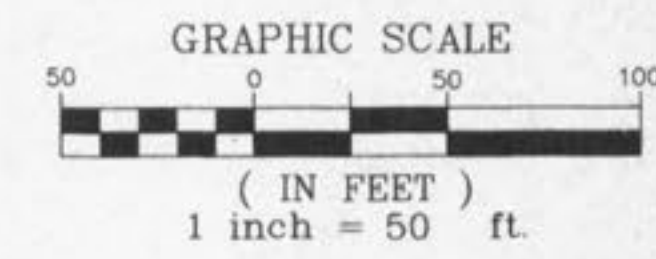
SEE SHEET 6 SEE PREVIOUSLY APPROVED GRADING PLANS FOR SILTATION AND EROSION CONTROL

GLENMARO GRADING PLAN

June 1995 Job No. 95-

Rev. 8/31/95  
 Rev. 9/25/95  
 Rev. 10/18/95  
 105

NOTE:  
 Underground utilities and structures have been plotted from available information and therefore, their location must be considered approximate only. It is the responsibility of the individual contractors to notify the utility companies before actual construction.



359 || 360 | 361 | 362  
 OSAGE MEADOWS - PLATS 1, 2, 3, & 4  
 BK 23 PG 33, BK 24 PG 24, PG 33, BK 24 PG 44, & BK 25 PG 41, 9

BRUN ROAD (VARIABLE WIDTH) (RPB I PG 45)

NO 201' 42" E

Grading Limits (Typ.)

Grading Limits

Proposed Tree Line (Typ.)

Grading Limits (Typ.)

Existing Trees To Remain (Typ.)

Convert to MH

STO-MH5-25  
 T=610.07  
 FL=603.92  
 FL=604.69

CI 5-26  
 T=609.61  
 FL=604.91

STO-MH5-25  
 T=610.07  
 FL=603.92  
 FL=604.69

AI 5-28  
 T=612.70  
 FL=609.00

AI 5-29  
 T=615.02  
 FL=611.52

Existing Trees To Remain (Typ.)

N/F WENGER

Grading Limits (Typ.)

N/F FEISE