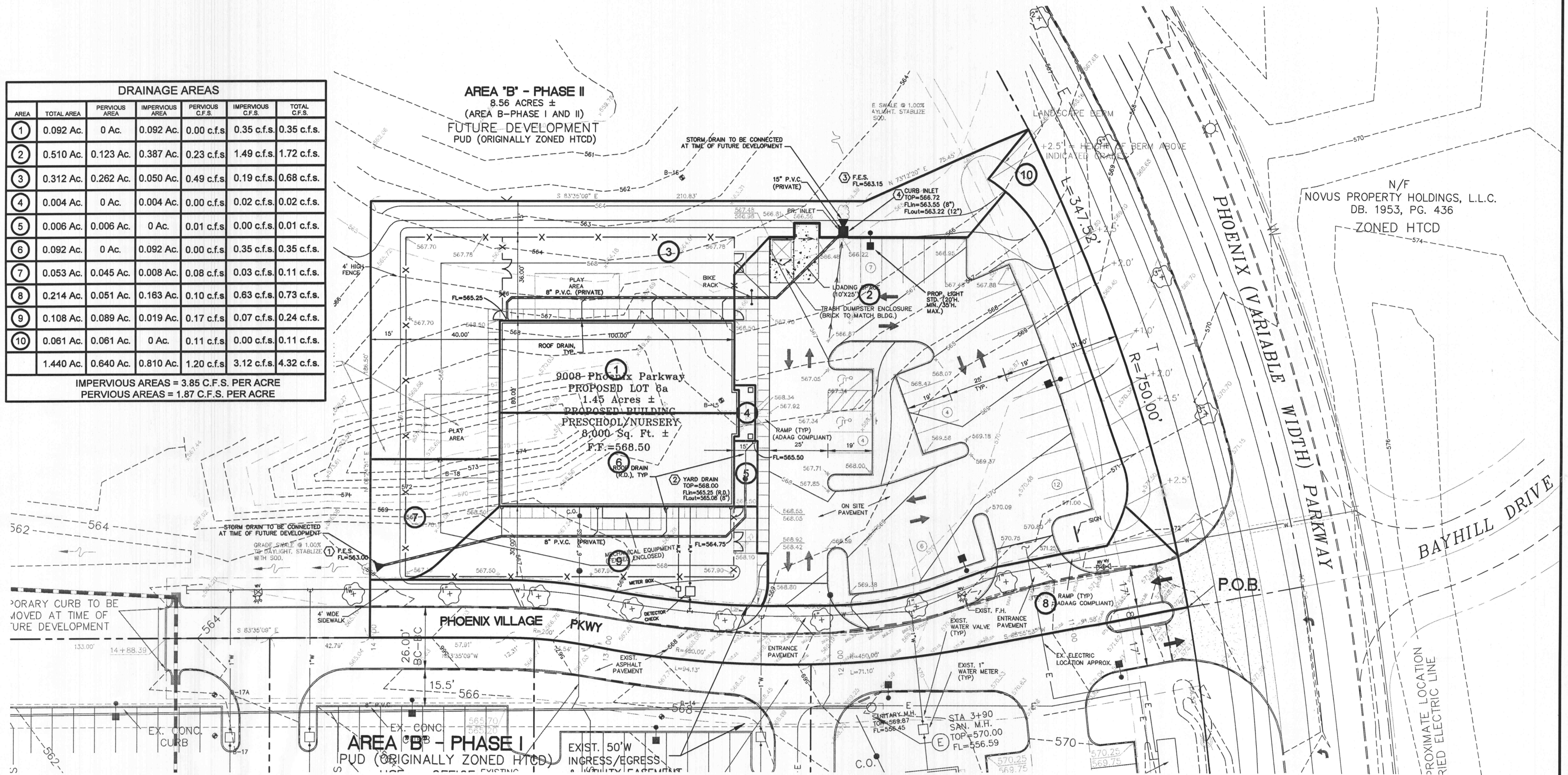


DRAINAGE AREAS						
AREA	TOTAL AREA	PERVIOUS AREA	IMPERVIOUS AREA	PERVIOUS C.F.S.	IMPERVIOUS C.F.S.	TOTAL C.F.S.
1	0.092 Ac.	0 Ac.	0.092 Ac.	0.00 c.f.s.	0.35 c.f.s.	0.35 c.f.s.
2	0.510 Ac.	0.123 Ac.	0.387 Ac.	0.23 c.f.s.	1.49 c.f.s.	1.72 c.f.s.
3	0.312 Ac.	0.262 Ac.	0.050 Ac.	0.49 c.f.s.	0.19 c.f.s.	0.68 c.f.s.
4	0.004 Ac.	0 Ac.	0.004 Ac.	0.00 c.f.s.	0.02 c.f.s.	0.02 c.f.s.
5	0.006 Ac.	0.006 Ac.	0 Ac.	0.01 c.f.s.	0.00 c.f.s.	0.01 c.f.s.
6	0.092 Ac.	0 Ac.	0.092 Ac.	0.00 c.f.s.	0.35 c.f.s.	0.35 c.f.s.
7	0.053 Ac.	0.045 Ac.	0.008 Ac.	0.08 c.f.s.	0.03 c.f.s.	0.11 c.f.s.
8	0.214 Ac.	0.051 Ac.	0.163 Ac.	0.10 c.f.s.	0.63 c.f.s.	0.73 c.f.s.
9	0.108 Ac.	0.089 Ac.	0.019 Ac.	0.17 c.f.s.	0.07 c.f.s.	0.24 c.f.s.
10	0.061 Ac.	0.061 Ac.	0 Ac.	0.11 c.f.s.	0.00 c.f.s.	0.11 c.f.s.
		1.440 Ac.	0.640 Ac.	0.810 Ac.	1.20 c.f.s.	3.12 c.f.s.
		IMPERVIOUS AREAS = 3.85 C.F.S. PER ACRE				
		PERVIOUS AREAS = 1.87 C.F.S. PER ACRE				

AREA 'B' - PHASE II
8.56 ACRES ±
(AREA B-PHASE I AND II)
FUTURE DEVELOPMENT
PUD (ORIGINALLY ZONED HTCD)



01/07/03 PER CITY COMMENTS OF 12/29/03
12/15/03 PER CITY COMMENTS OF 12/04/03
11/17/03 PER CITY COMMENTS OF 11/04/03 & AGENCY COMMENTS

GODDARD SCHOOL - WINGHAVEN
DRAINAGE AREA PLAN

STOCK & ASSOCIATES
CONSULTING ENGINEERS, INC.

425 NORTH NEW BALLAS ROAD
SUITE 165
ST. LOUIS, MO. 63141
PH. (314) 432-8100
FAX (314) 432-8171
e-mail: general@stockassoc.com

DATE: 10/10/03
CHECKED BY: G.M.S.
JOB NUMBER: 203-3120
SHEET: C9 of 9

P&Z 9831.43.01

STATE OF MISSOURI
REGISTERED PROFESSIONAL ENGINEER
GEORGE MICHAEL STOCK
NUMBER E-25116

GEORGE M. STOCK E-25116

