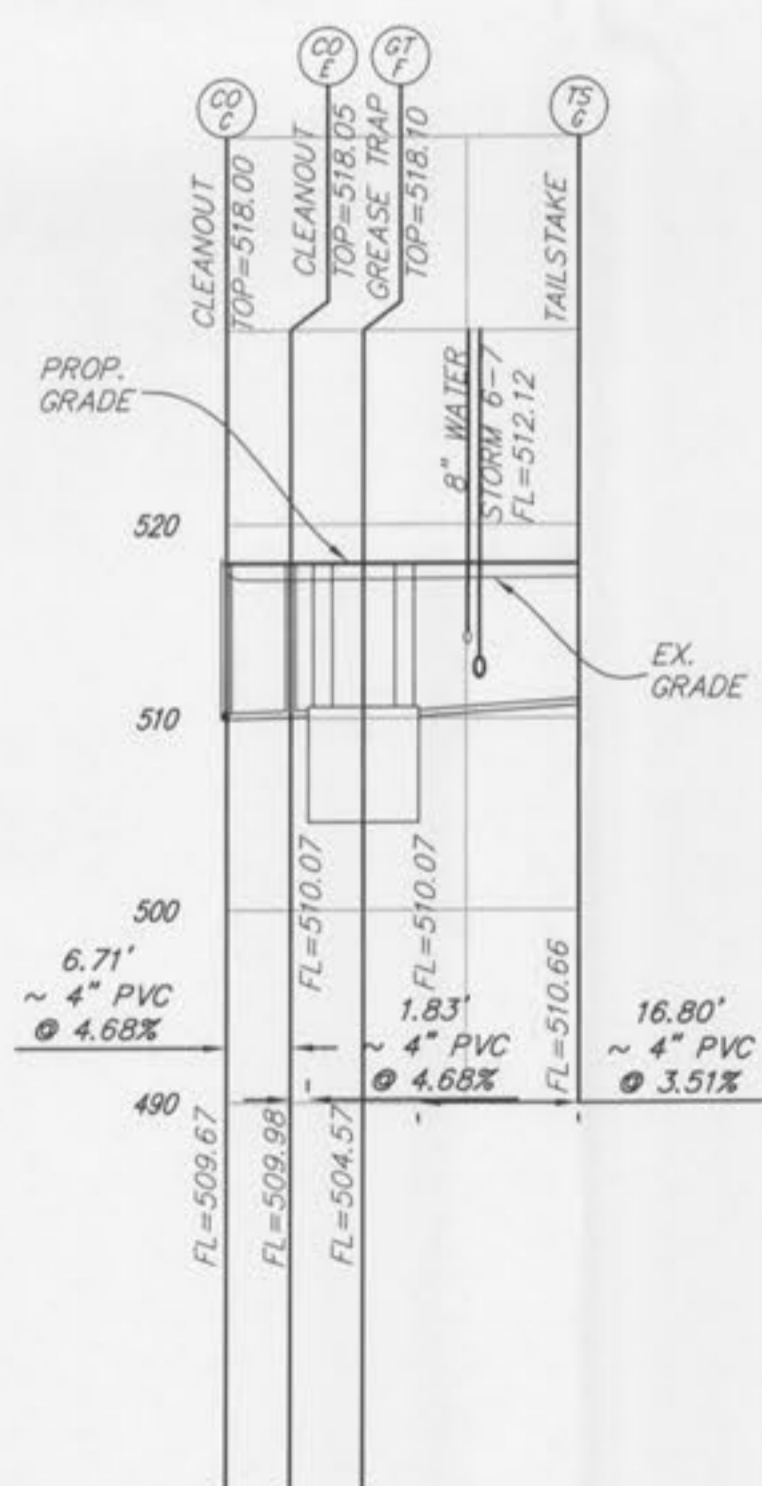


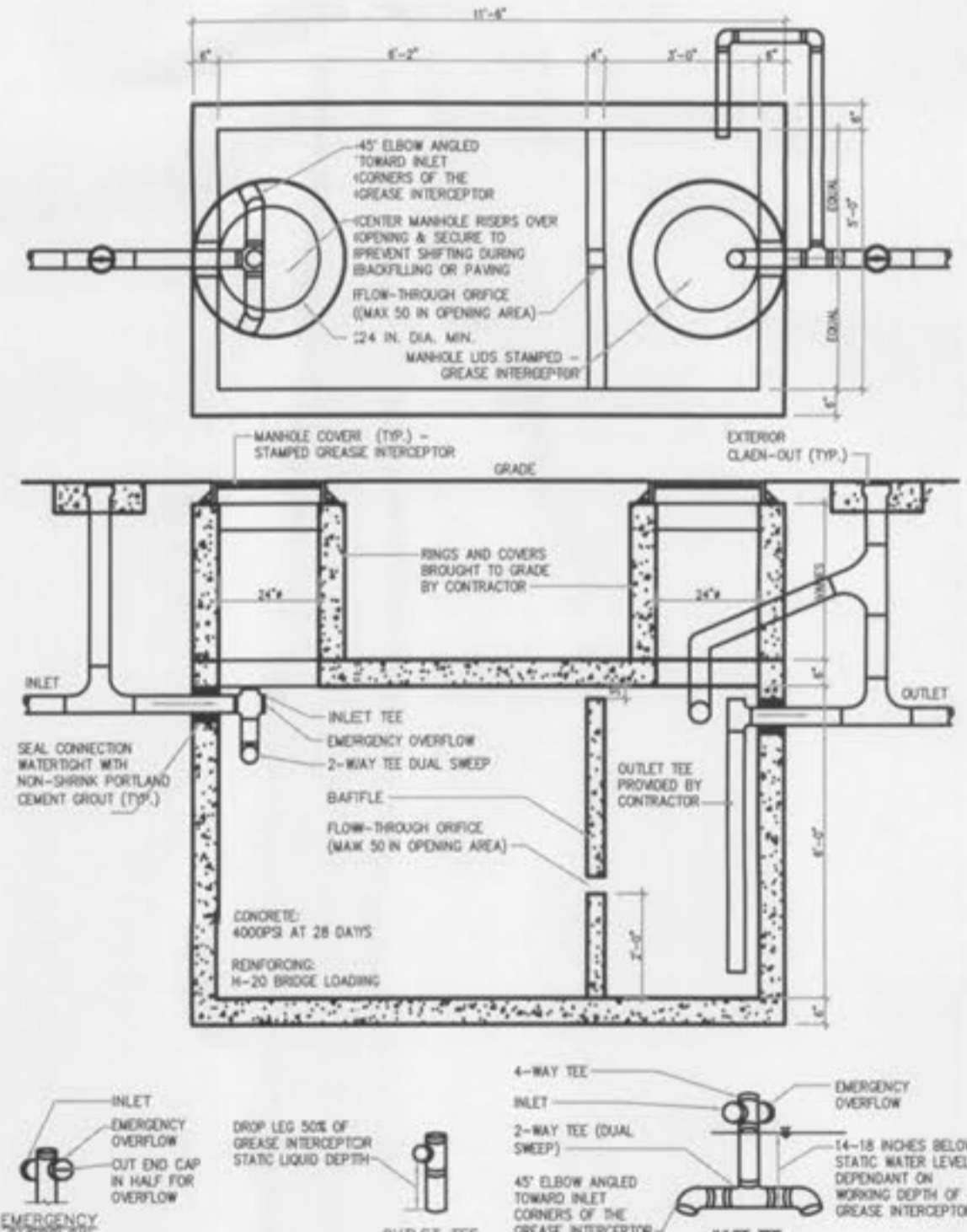
SANITARY LATERAL PROFILE

SCALE 1"=20'H
1"=10'V



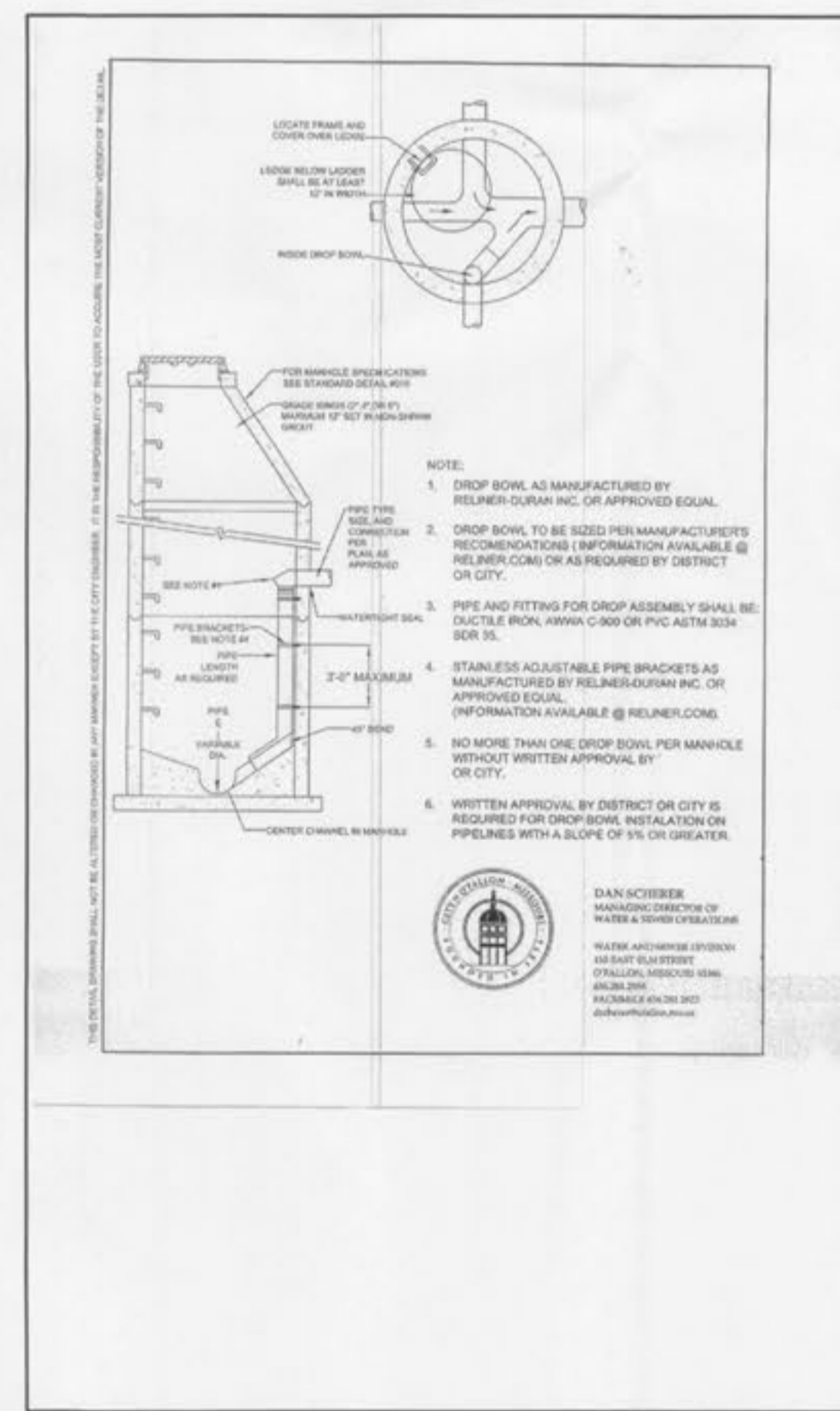
SANITARY LATERAL PROFILE

SCALE 1"=20'H
1"=10'V



- NOTES:**
- GREASE TRAP SHALL BE ENGINEER DESIGNED BY MANUFACTURER TO RESIST ALL LOADS.
 - IF PRE-FAB SEPTIC TANK IS USED, THEN TANK SHALL BE MODIFIED TO MEET ALL DETAILS & NOTES.
 - SHOP DRAWINGS SHALL SHOW EXACT DIMENSIONS, WALL THICKNESS, CONC. STRENGTH, ETC.
 - GREASE TRAP INSIDE DIMENSIONS ARE APPROXIMATE & ANY CHANGES IN LENGTH x WIDTH x DEPTH SHALL BE ADJUSTED IN PROPORTIONS SHOWN.
 - P.C. SHALL SUPPLY GREASE INTERCEPTOR BY "STAY-RIGHT TANK COMPANY, INC." (800) 768-8265 OR EQUAL.

2000 GAL. GREASE INTERCEPTOR
SCALE: N.T.S.



- NOTE:**
- DROP BOWL, AS MANUFACTURED BY HELMERS-DURAN INC. OR APPROVED EQUAL.
 - DROP BOWL, TO BE SIZED PER MANUFACTURER'S RECOMMENDATIONS (INFORMATION AVAILABLE @ HELMERS-DURAN.COM) OR AS REQUIRED BY DISTRICT OR CITY.
 - PIPE AND FITTING FOR DROP ASSEMBLY SHALL BE DUCTILE IRON, AWWA C-900 OR PVC ASTM 3026 SDR 35.
 - STAINLESS ADJUSTABLE PIPE BRACKETS AS MANUFACTURED BY HELMERS-DURAN INC. OR APPROVED EQUAL. (INFORMATION AVAILABLE @ HELMERS-DURAN.COM)
 - NO MORE THAN ONE DROP BOWL PER MANHOLE WITHOUT WRITTEN APPROVAL BY DISTRICT OR CITY.
 - WRITTEN APPROVAL BY DISTRICT OR CITY IS REQUIRED FOR DROP BOWL INSTALLATION ON PIPELINES WITH A SLOPE OF 1% OR GREATER.



| Revised | Comment |
|----------|--------------------------|
| 01/19/12 | CITY COMMENTS |
| 02/22/12 | CITY AND CLIENT COMMENTS |

Engineered By:

DOERING
ENGINEERING Inc.

CIVIL ENGINEERING • PLANNING • SURVEYING

Missouri Office
5000 Griffin Rd.
St. Louis, MO 63114-8873
Tel: (314) 845-1718

Seal

STATE OF MISSOURI
MARK DOERING
LICENSE NO. E-23059
3/12/12

MARK DOERING
CIVIL ENGINEER E-23059
3/26/12
MO. CORPORATE
LICENSE NO. 001347
IL. CORPORATE
LICENSE NO. 184.003035

GOLDEN CORRAL
BRAMBLETT ROAD
O'FALLON, MO 63366
SEWER PROFILES

Date: 12/15/11
Project Number: 11063
File Name: 11063_CD
Drawn By: JAB Sheet
Check By: MAD
C8A