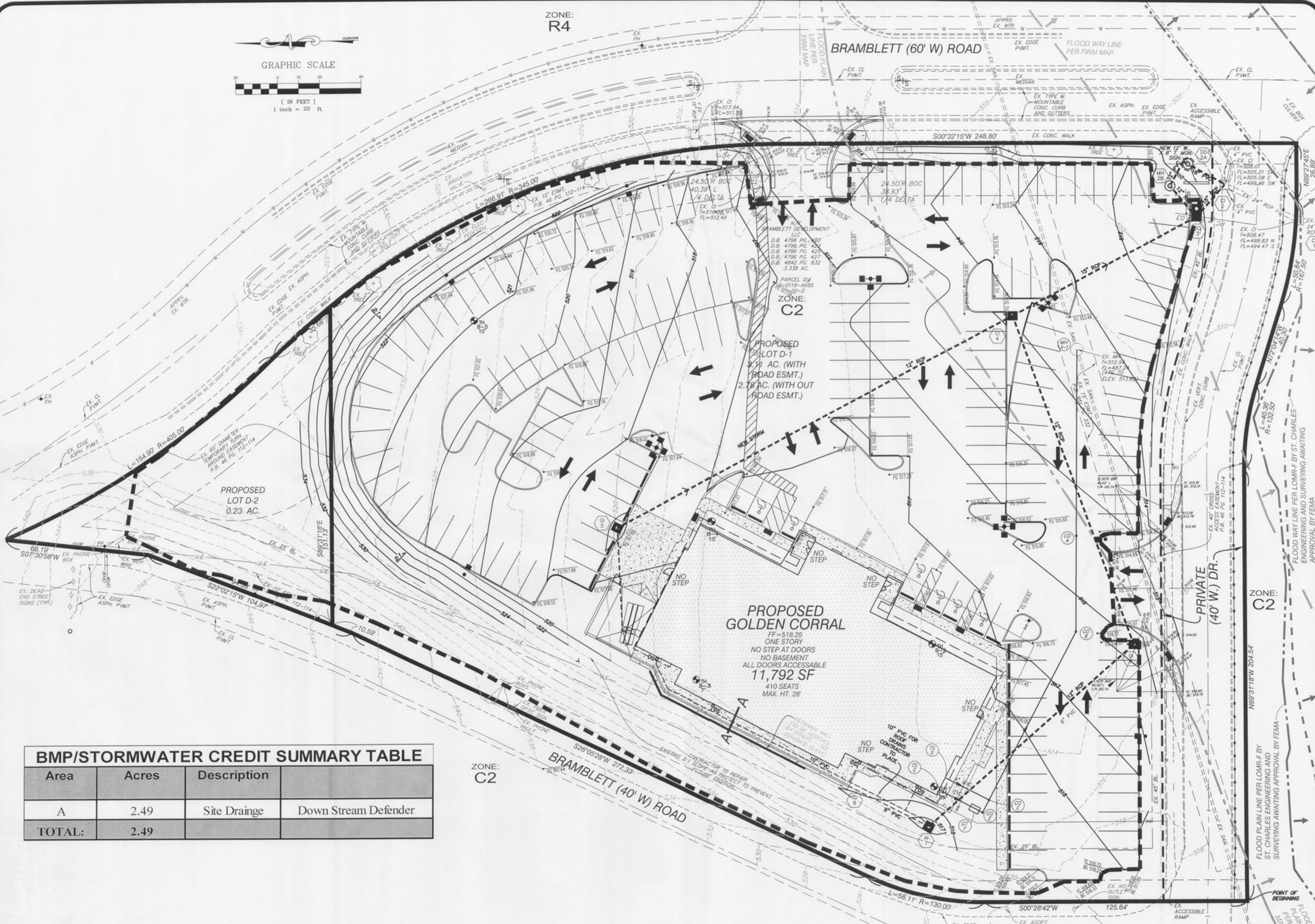


ZONE:
R4

BRAMBLETT (60' W) ROAD



PROPOSED GOLDEN CORRAL

FF=518.25
ONE STORY
NO STEP AT DOORS
NO BASEMENT
ALL DOORS ACCESSIBLE
11,792 SF
410 SEATS
MAX. HT. 28'

BMP/STORMWATER CREDIT SUMMARY TABLE

Area	Acres	Description	
A	2.49	Site Drainage	Down Stream Defender
TOTAL:	2.49		

ZONE:
C2

BRAMBLETT (40' W) ROAD

ZONE:
C2

PRIMATE
(40' W) DR.

Revised	City Comments	City and Client Comments
07/19/12		
07/22/12		

Engineered By:

DOERING ENGINEERING Inc.

CIVIL ENGINEERING • PLANNING • SURVEYING

Missouri DMSR
5030 Oakleaf Rd.
St. Louis, Missouri 63128
Telephone: (314) 497-9913
Fax: (314) 647-1718

Seal

STATE OF MISSOURI

Professional Engineer

Mark Doering

NUMBER E-23059

3/26/12

MARK DOERING
CIVIL ENGINEER E-23059
3/26/12
MO. CORPORATE
LICENSE NO. 001347
IL CORPORATE
LICENSE NO. 184.003035

GOLDEN CORRAL
BRAMBLETT ROAD
O'FALLON, MO 63366
BMP DAM

Date: 12/15/11
Project Number: 11063
File Name: 11063 CD
Drawn By: JAB
Check By: MAD

C11