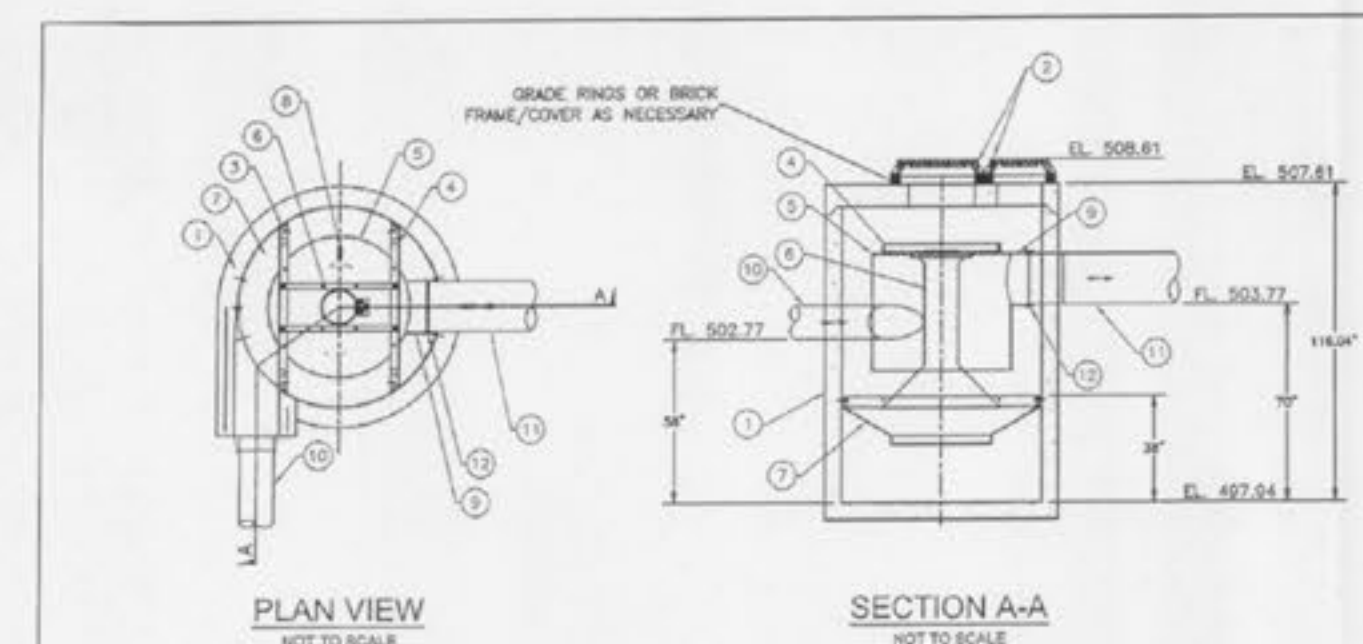


NOTE: YOU ARE NOT LIMITED TO THE OUTLETS SHOWN. OUTLETS AS LARGE AS 12" [300mm] MAY ALSO BE CUT OUT ON THE NEAR AND FAR SIDE FACES OF THE 900 CATCH BASIN.



Golden Corral  
O'Fallon, MO  
MSD P#XXXX-XX

MANHOLE 60-24  
DOWNSTREAM DEFENDER  
6" DIAMETER

REVISIONS:

MANUFACTURED BY:  
**Hydro**  
International

SUPPLIED BY:  
**Aspen**  
Prestressed Concrete  
1771 Larkin Williams Road  
Fenton, MO 63502  
636.348.2228  
636.348.2200 fax

NO. CERT. OF AUTHORITY # 1039

HYDRO PROFILE

Date: 1-9-2012  
Sheet: 2 of 2

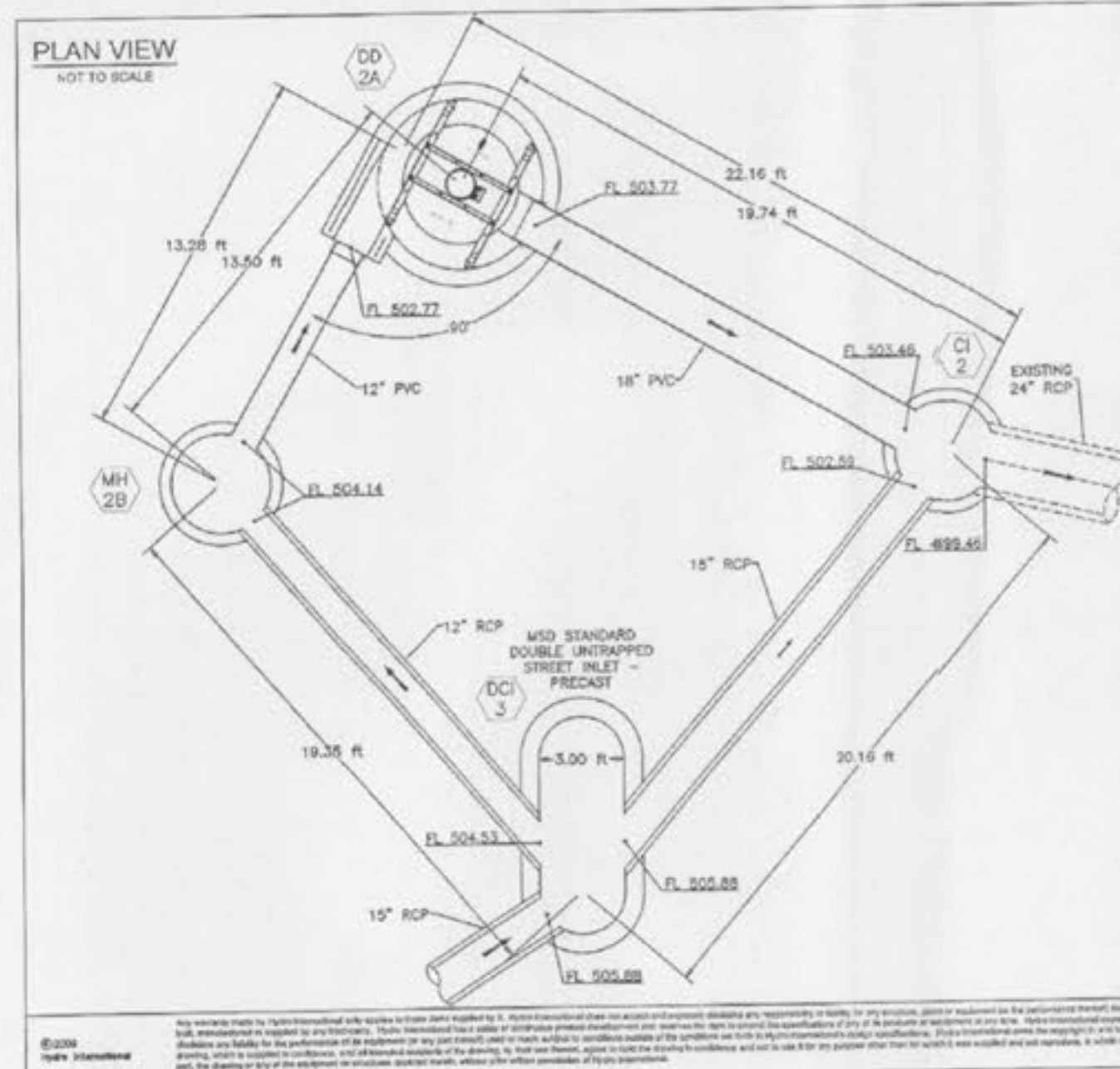
PHYSICAL LIST

ITEM	SIZE	DESCRIPTION
1	72 in.	12" CONCRETE MANHOLE
2	30 in.	MANHOLE LID, FRAME & COVER
3	18 in.	MANHOLE LID, FRAME & COVER
4		LEADER ANGLE (TYP.)
5		SUPPORT FRAME
6		EDP PLATE
7		CENTRAL SHUNT & CONE
8		REINFORCING SADDLE
9		FLOATABLES LID W/ VENT
10	18 in.	OUTFLOW PIPE (TYP.)
11	12 in.	TRAP/INLET PIPE (BY CONTRACTOR)
12	18 in.	OUTFLOW PIPE (BY CONTRACTOR)
13	18 in.	PERFIDCO OR MARMAC ADAPTER

HYDRAULIC PARAMETERS  
Design Storm Flow: 3.46 cfs

EQUIPMENT PERFORMANCE  
The stormwater treatment unit shall adhere to the hydraulic parameters given in the chart below and provide the removal efficiencies and storage capacities as follows.

- Performance objectives: The unit shall be capable of treating the peak flow rate listed below.
- Peak Treatment Flow: 8.0 cfs
- Sediment Storage Capacity: 2.10 cu. yd.
- Continuous Oil Storage Capacity: 250 gal.
- Sediment shall be stored in a zone that is isolated from the main flow path and protected from reentrainment by a benching skirt.



Golden Corral  
O'Fallon, MO  
MSD P#XXXX-XX

MANHOLE 60-24  
DOWNSTREAM DEFENDER  
6" DIAMETER

REVISIONS:

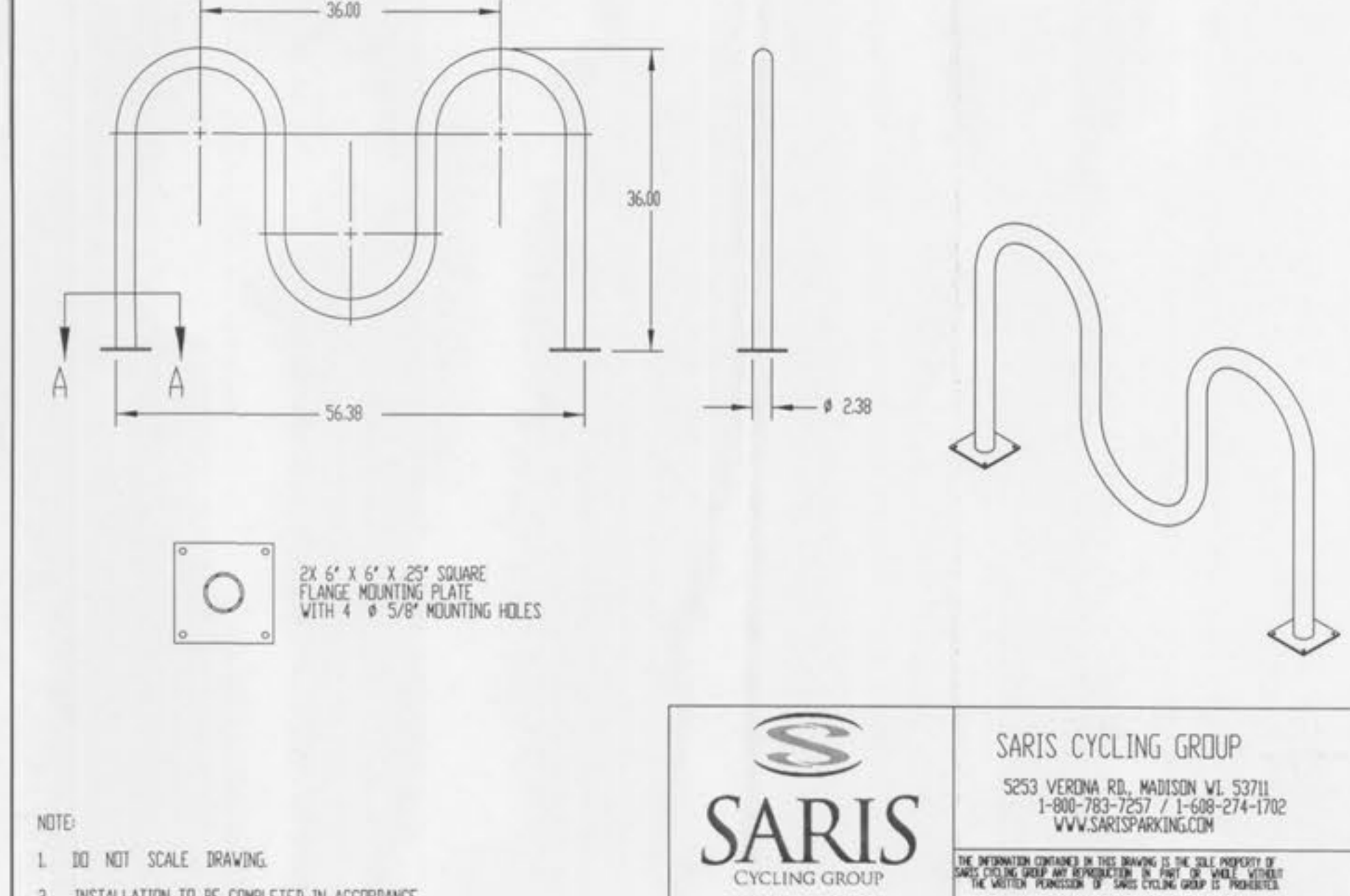
MANUFACTURED BY:  
**Hydro**  
International

SUPPLIED BY:  
**Aspen**  
Prestressed Concrete  
1771 Larkin Williams Road  
Fenton, MO 63502  
636.348.2228  
636.348.2200 fax

NO. CERT. OF AUTHORITY # 1039

HYDRO PLAN VIEW

Date: 1-9-2012  
Sheet: 1 of 2



NOTE:  
1. DO NOT SCALE DRAWING.  
2. INSTALLATION TO BE COMPLETED IN ACCORDANCE WITH MANUFACTURER'S SPECIFICATIONS.

**SARIS**  
CYCLING GROUP

WE BRING CYCLING TO LIFE

SARIS CYCLING GROUP  
5253 VERONA RD, MANASSAS VA 53711  
1-800-783-7257 / 1-688-274-1782  
WWW.SARISPARKING.COM

TITLE:  
2103 - 5 BIKE FM WAVE RACK

Revised	Comment
01/19/12	CITY COMMENTS
02/22/12	CITY AND CLIENT COMMENTS

Missouri Office  
5030 Duffin Rd.  
St. Louis, Missouri 63128  
Telephone: (314) 887-8913  
Fax: (314) 843-1718

Engineered By:  
**DOERING**  
ENGINEERING Inc.  
CIVIL ENGINEERING • PLANNING • SURVEYING

Seal

STATE OF MISSOURI  
MARK DOERING  
NUMBER  
E-33059  
3/26/12

MARK DOERING  
CIVIL ENGINEER E-23059  
3/26/12  
MO. CORPORATE  
LICENSE NO. 001347  
IL. CORPORATE  
LICENSE NO. 184.003035

**GOLDEN CORRAL**  
BRAMBLETT ROAD  
O'FALLON, MO 63366  
DETAILS

Date: 12/15/11  
Project Number: 11063  
File Name: 11063 CD  
Drawn By: JAB  
Check By: MAD

Sheet  
C12A