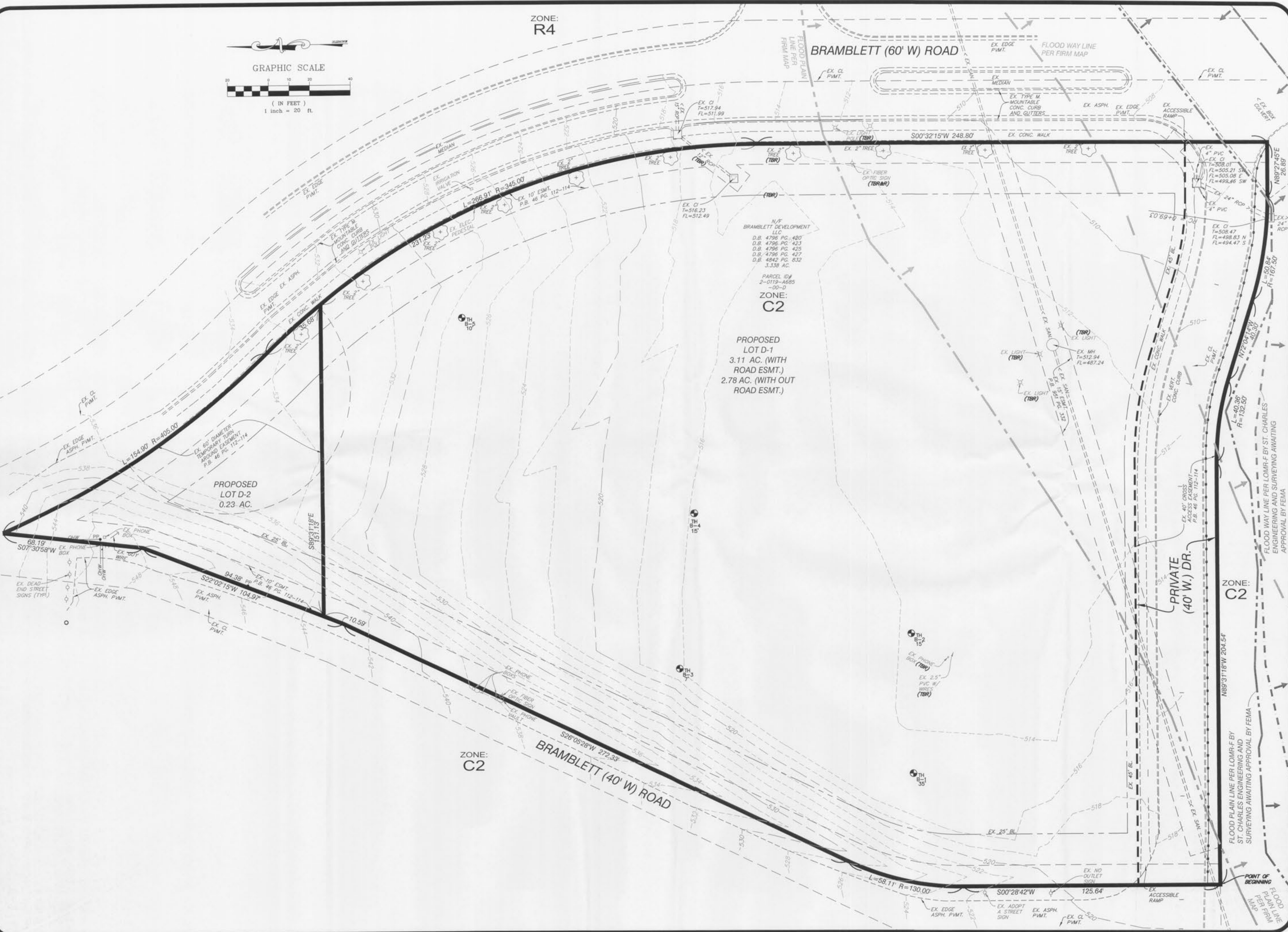


ZONE:
R4

BRAMBLETT (60' W) ROAD



N/T
BRAMBLETT DEVELOPMENT
LLC
D.B. 4796 PG. 480
D.B. 4796 PG. 423
D.B. 4796 PG. 425
D.B. 4796 PG. 427
D.B. 4842 PG. 232
3.338 AC.
PARCEL ID#
2-0119-A685
-00-D
ZONE:
C2

PROPOSED
LOT D-1
3.11 AC. (WITH
ROAD ESMT.)
2.78 AC. (WITH OUT
ROAD ESMT.)

PROPOSED
LOT D-2
0.23 AC.

ZONE:
C2

BRAMBLETT (40' W) ROAD

PRIVATE
(40' W) DR.

ZONE:
C2

Revised	Comment
01/19/12	CITY COMMENTS
02/22/12	CITY AND CLIENT COMMENTS

Engineered By:

DOERING
ENGINEERING Inc.

CIVIL ENGINEERING • PLANNING • SURVEYING

Missouri Office
5000 Collins Rd. #2128
St. Louis, MO 63112
Telephone: (314) 461-6812
Fax: (314) 843-1716

Seal

3/26/12

MARK DOERING
CIVIL ENGINEER E-23059
3/26/12
MO. CORPORATE
LICENSE NO. 001347
ILL. CORPORATE
LICENSE NO. 184-003035

GOLDEN CORRAL
BRAMBLETT ROAD
O'FALLON, MO 63366
DEMO PLAN

Date: 12/15/11
Project Number: 11063
File Name: 11063_CD
Drawn By: JAB Sheet
Check By: MAD

C3