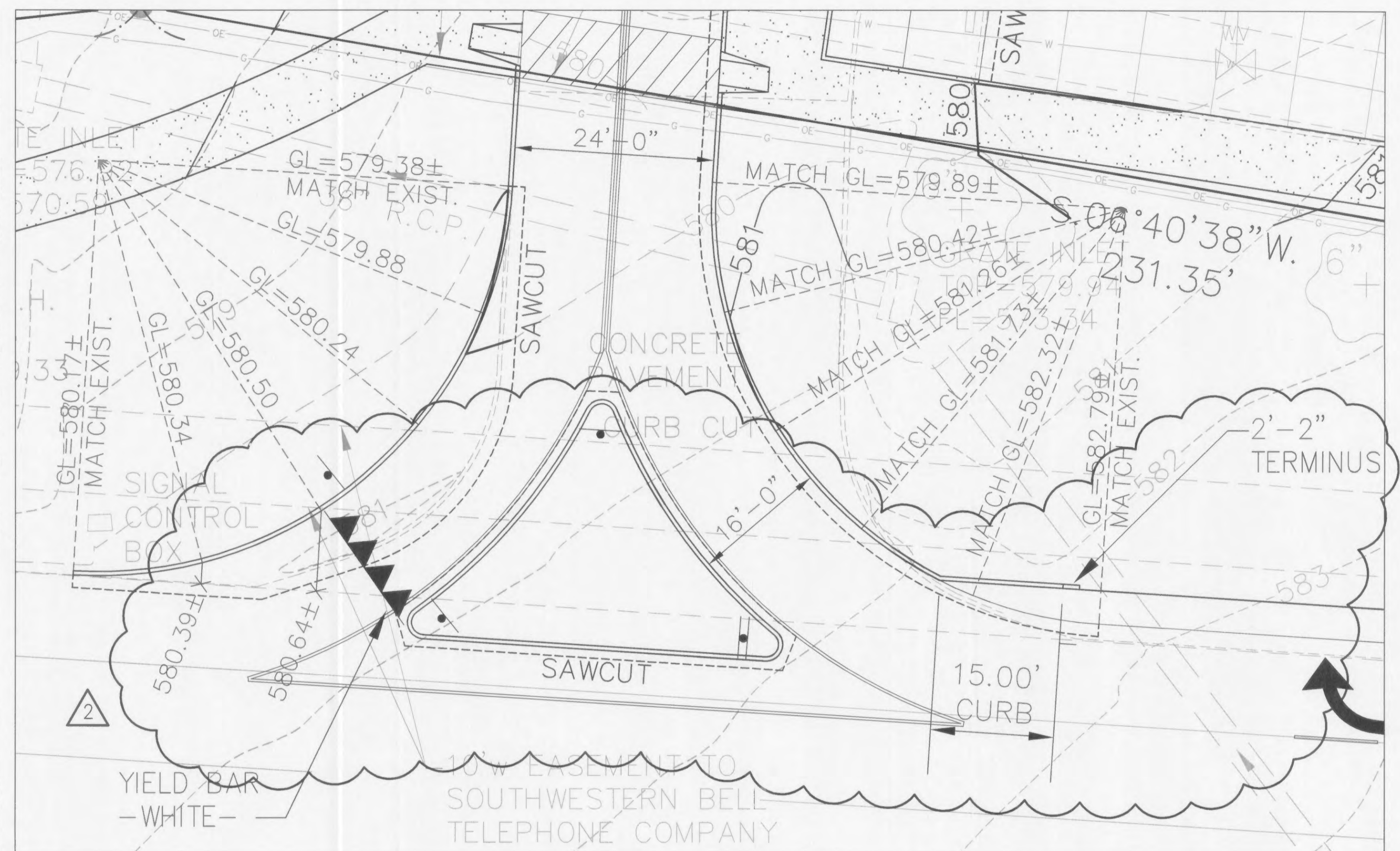
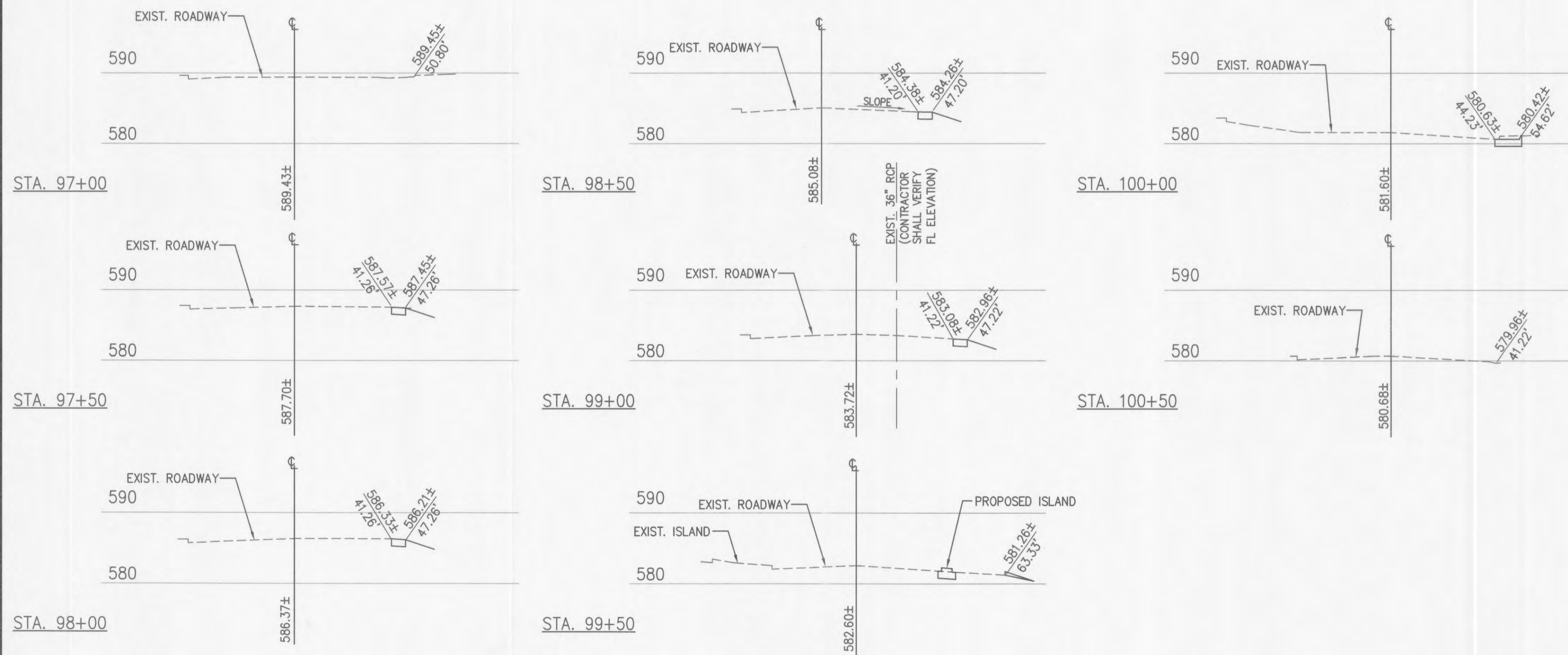


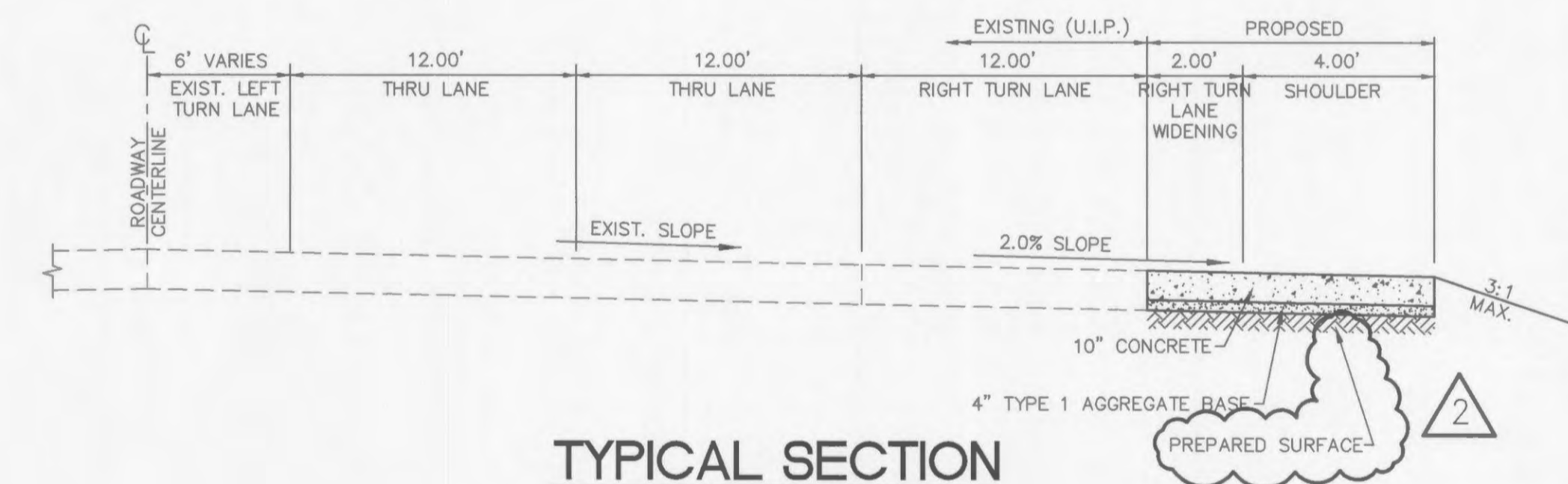
**ROADWAY WIDENING PLAN**  
SCALE: 1"=30'



**WARPING DETAIL**  
SCALE: 1"=10'



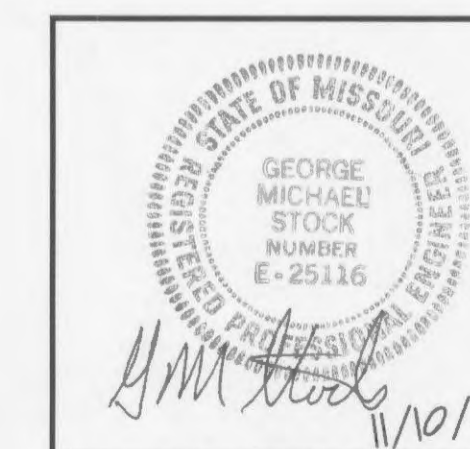
**ROADWAY SECTIONS**  
(MISSOURI STATE HIGHWAY "K")  
SCALE: 1"=30' HORIZ.  
1"=10' VERT.



**TYPICAL SECTION**  
HWY. K ROAD WIDENING  
@ STA. 98+00  
(N.T.S.)

- ▲ MoDOT, WATER COMMENTS 11/10/06
- ▲ CITY, MoDOT, FIRE COMMENTS 11/7/06

GOLD'S GYM - O'FALLON, MO  
ROADWAY SECTIONS & WARPING DETAILS



**STOCK & ASSOCIATES**  
Consulting Engineers, Inc.

257 Chesterfield Business Parkway  
St. Louis, MO 63005  
PH. (636) 530-9100  
FAX (636) 530-9130  
e-mail: general@stockassoc.com  
Web: www.stockassoc.com

DRAWN BY: GEORGE M. STOCK	DATE: 8/14/06	CHECKED BY: C.A.M.	DATE: 8/14/06	JOB NUMBER: 206-3850	SHEET: C14
---------------------------	---------------	--------------------	---------------	----------------------	------------

C:\USA\W3800\2063850\Drawings\Roadway\Warp.dwg, 11/20/2006, 3:41:41 PM, K29 9500 (Plan to File).dwg