

GOLD'S GYM

HWY. K SITE, O'FALLON MO

895-4589

WALDBART AND SONS

Established 1872

Landscape Designers, Landscape Contractors & Nurserymen

1420 Teson Rd., Hazelwood, MO 63042

Sheet L-1

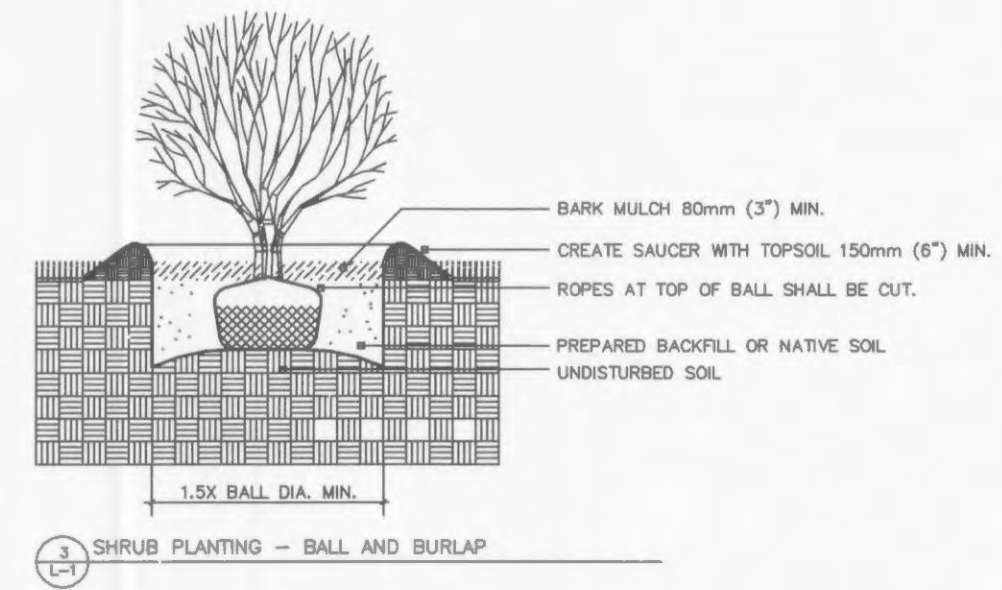
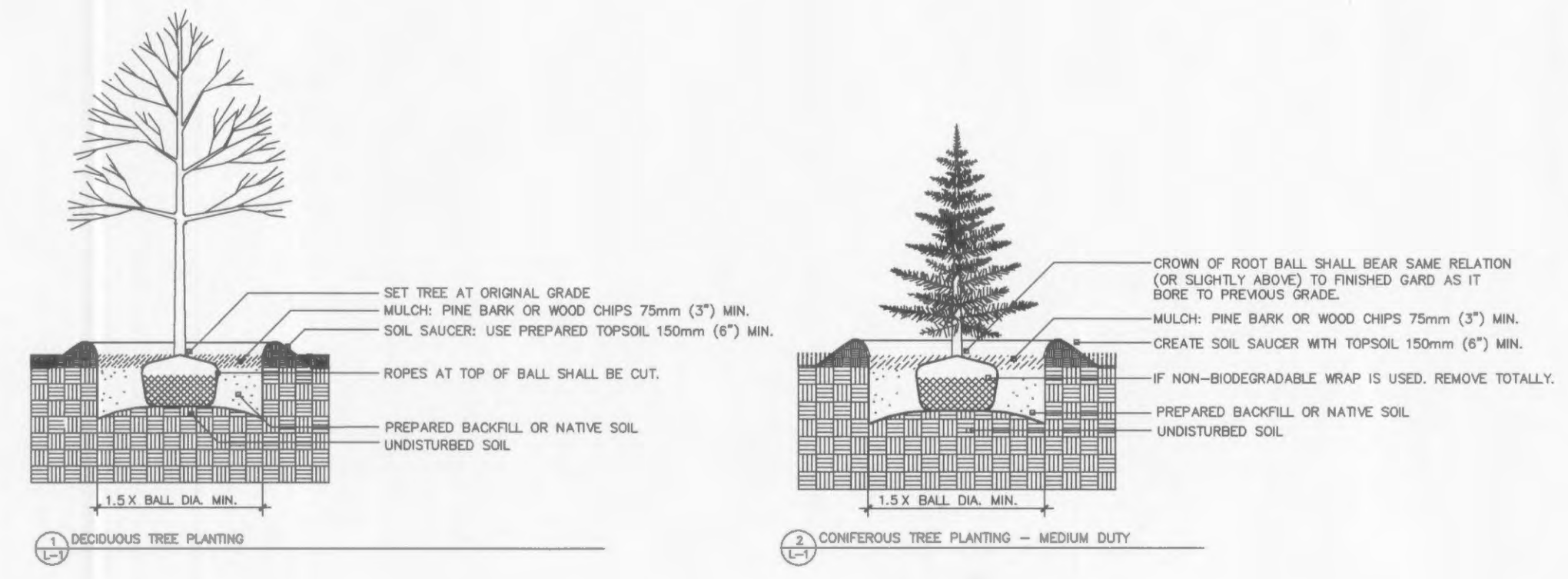
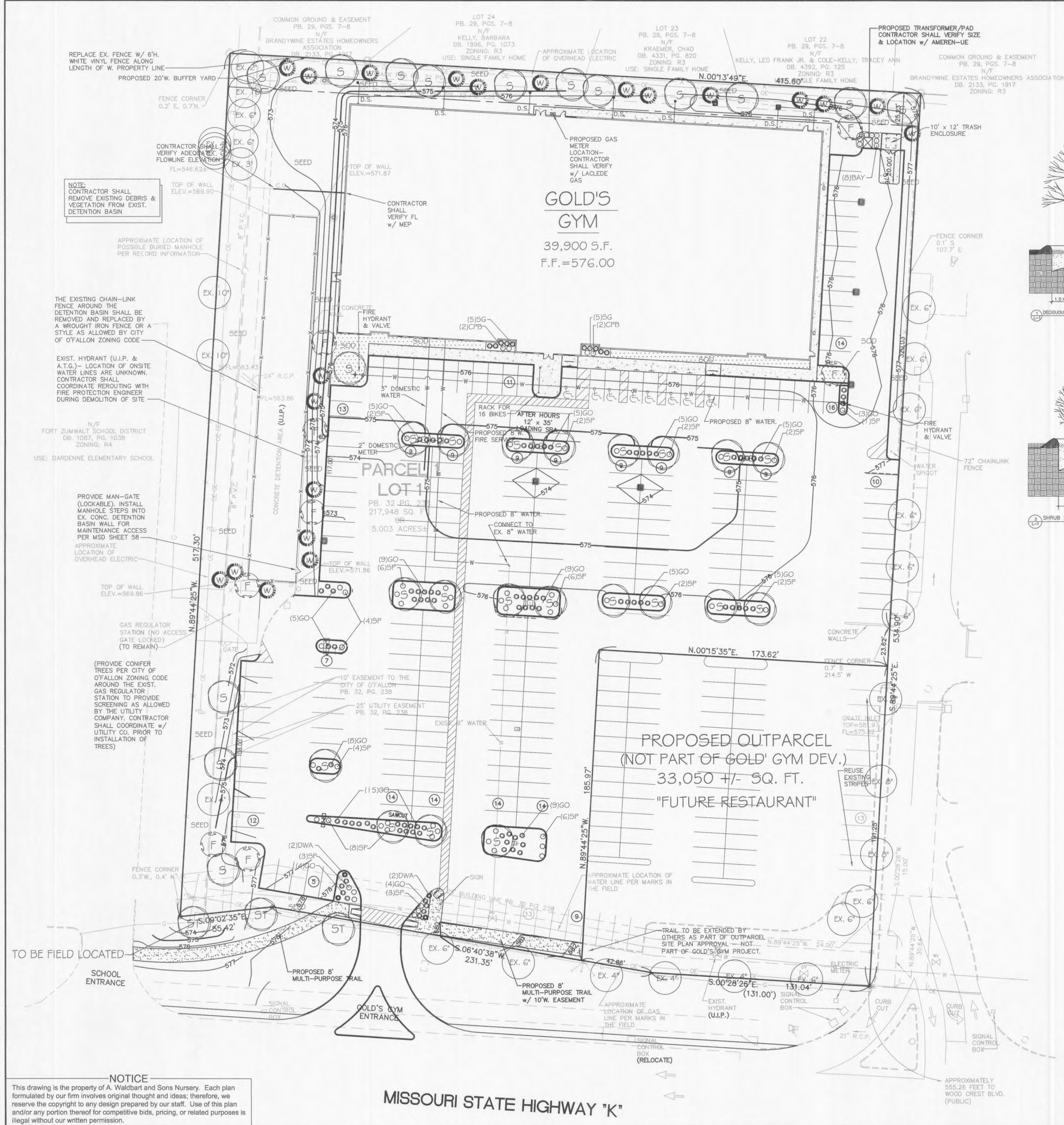
Revised 01-05-06

Date 06-20-06

Scale 1" = 30'-0"

Approved

Drawn By JFP



SITE CALCULATIONS & LANDSCAPE REQUIREMENTS:

ZONING: EXISTING ZONING- C2
 PROPOSED OUTPARCEL (NOT PART OF GOLD'S GYM DEV.)
 TOTAL SITE (4.24 ACRES) 184,897.73 SQ. FT. = (100%)
 BUILDING 39,382 SQ. FT. = (21.3%)
 PAVEMENT & WALKS 107,141.57 SQ. FT. = (57.9%)
 GREENSPACE 38,374 SQ. FT. = (20.8%)

PARKING SPACES : 236 PARKING SPACES PROVIDED

STREET TREES
 1 TREE FOR EVERY 40 LN FT OF STREET FRONTAGE
 203.42 LN FT @ MISSOURI STATE HWY. K
 203.42 LN FT / 40 = 5.08 TREES REQUIRED
 = 2 TREES EXISTING
 = 3 TREES PROVIDED

INTERIOR PARKING:
 236 PARKING SPACES x 270 = 63,720 SQ. FT.
 6% OF 63,720 = 3,824 SQ. FT. REQUIRED LANDSCAPING
 SHRUB PLANTINGS = 5,037 SQ. FT. PROVIDED

OPEN SPACE:
 1 TREE FOR EVERY 3,000 SQ. FT.
 184,897.73 SQ. FT. PROPOSED SITE = 4.24 ACRES
 - 146,523.57 SQ. FT. PROPOSED BLDGS., PAVEMENT & WALKS
 38,374.16 SQ. FT. REMAINING OPEN SPACE
 38,374.16 SQ. FT. / 3,000 SQ. FT. = 12.79 TREES REQUIRED
 = 37 TREES PROVIDED

20' REAR BUFFERYARD:
 FOR EVERY 100 LN FT OF FRONTAGE WHERE BUFFERYARD IS REQUIRED
 2 PLANT UNITS AND A SIGHTPROOF 6' FENCE SHALL BE PROVIDED
 415 LN FT / 100 x 2 = 8.3 PLANT UNITS REQUIRED (249 Pts.)
 = 8.3+ PLANT UNITS PROVIDED (250 Pts.)

PLANT MATERIAL LIST			
QTY.	SYMB.	COMMON NAME	SIZE
3	ST	STREET TREE -Ash,Oak, Maple	2"
36	S	SHADE TREE- Ash,Oak,Maple,Birch	2"
8	F	FLOWERING TREE-Pear, Crab, Redbud	2"
21	W	WHITE PINE	6'
8	BAY	BAYBERRY	5 GAL
10	SG	SEA GREEN JUNIPER	5 GAL
90	GO	GREY OWL JUNIPER	5 GAL
51	SP	MAGIC CARPET SPIREA	5 GAL
4	CPB	CRIMSON PYGMY BARBERRY	5 GAL
51		BARK MULCH	CY
275		SOD AS MARKED	SY
		SEED DISTURBED AREAS	SY

LANDSCAPE PLAN
 SCALE: 1" = 30'-0"

NOTICE
 This drawing is the property of A. Waldbart and Sons Nursery. Each plan formulated by our firm involves original thought and ideas; therefore, we reserve the copyright to any design prepared by our staff. Use of this plan and/or any portion thereof for competitive bids, pricing, or related purposes is illegal without our written permission.

MISSOURI STATE HIGHWAY "K"

C:\baw\3800\2006\3800\01Plan\LL_Landscape.dwg, 11/10/2006, 11:10:02 AM, KFP 9900 (Plot to File).pc3