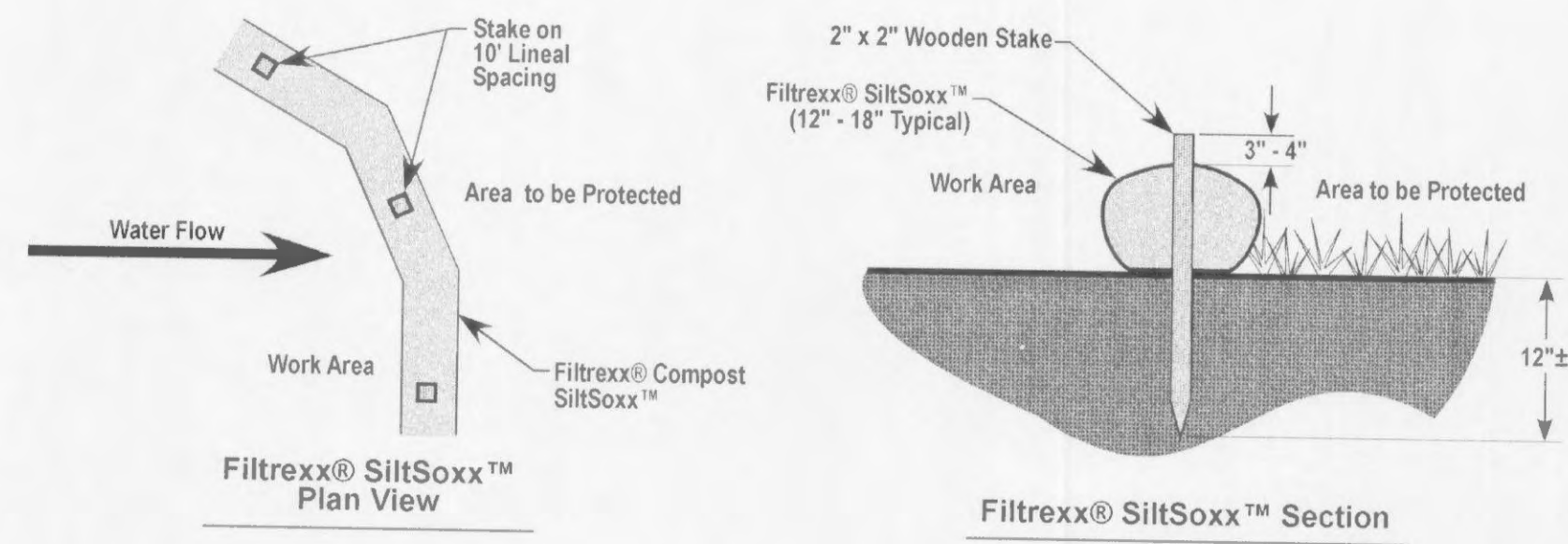
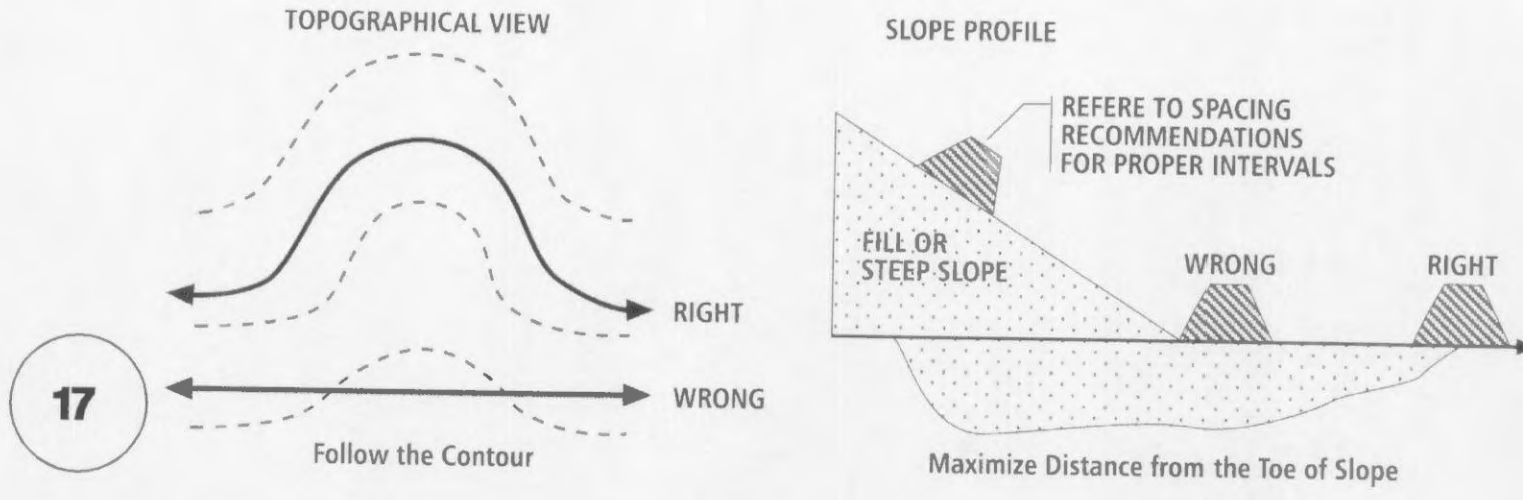


Filtrex® SiltSox™ Details

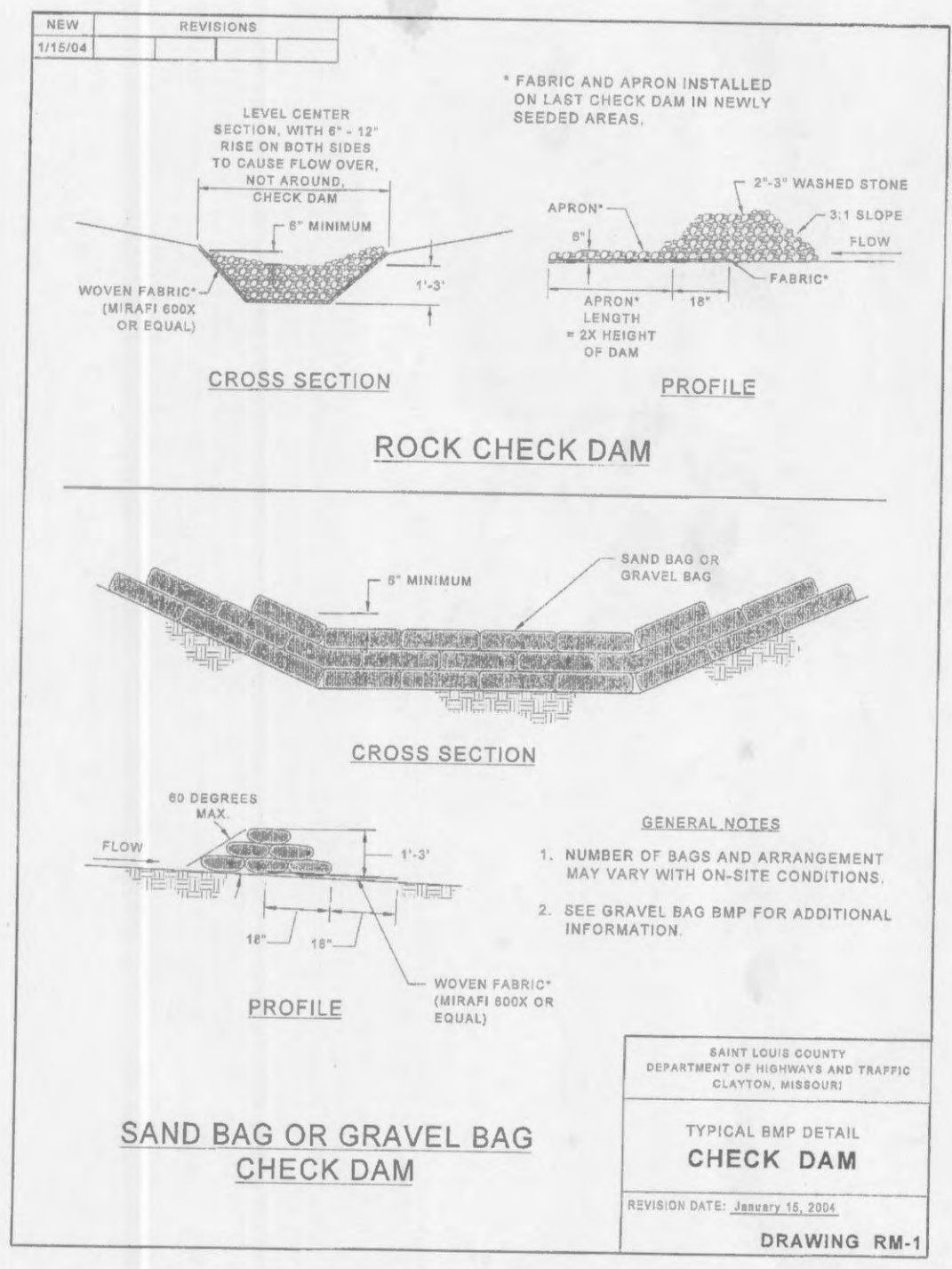


- Notes:**
1. All material to meet Filtrex® specifications.
 2. SiltSox™ compost/soil/rock/seed fill to meet application requirements.
 3. SiltSox™ depicted is for minimum slopes. Greater slopes may require larger socks per the Engineer.
 4. Compost material to be dispersed on site, as determined by Engineer.

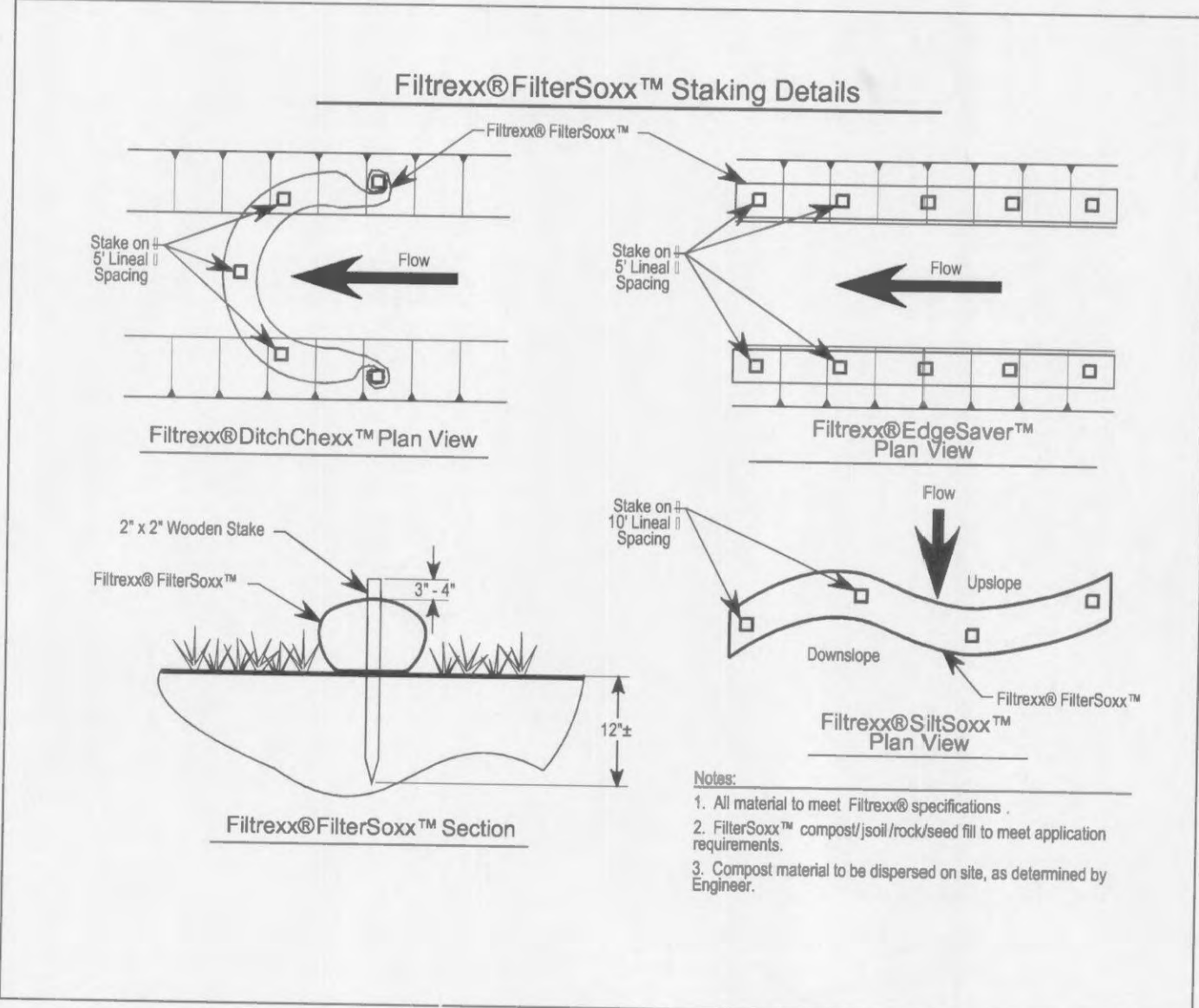
14



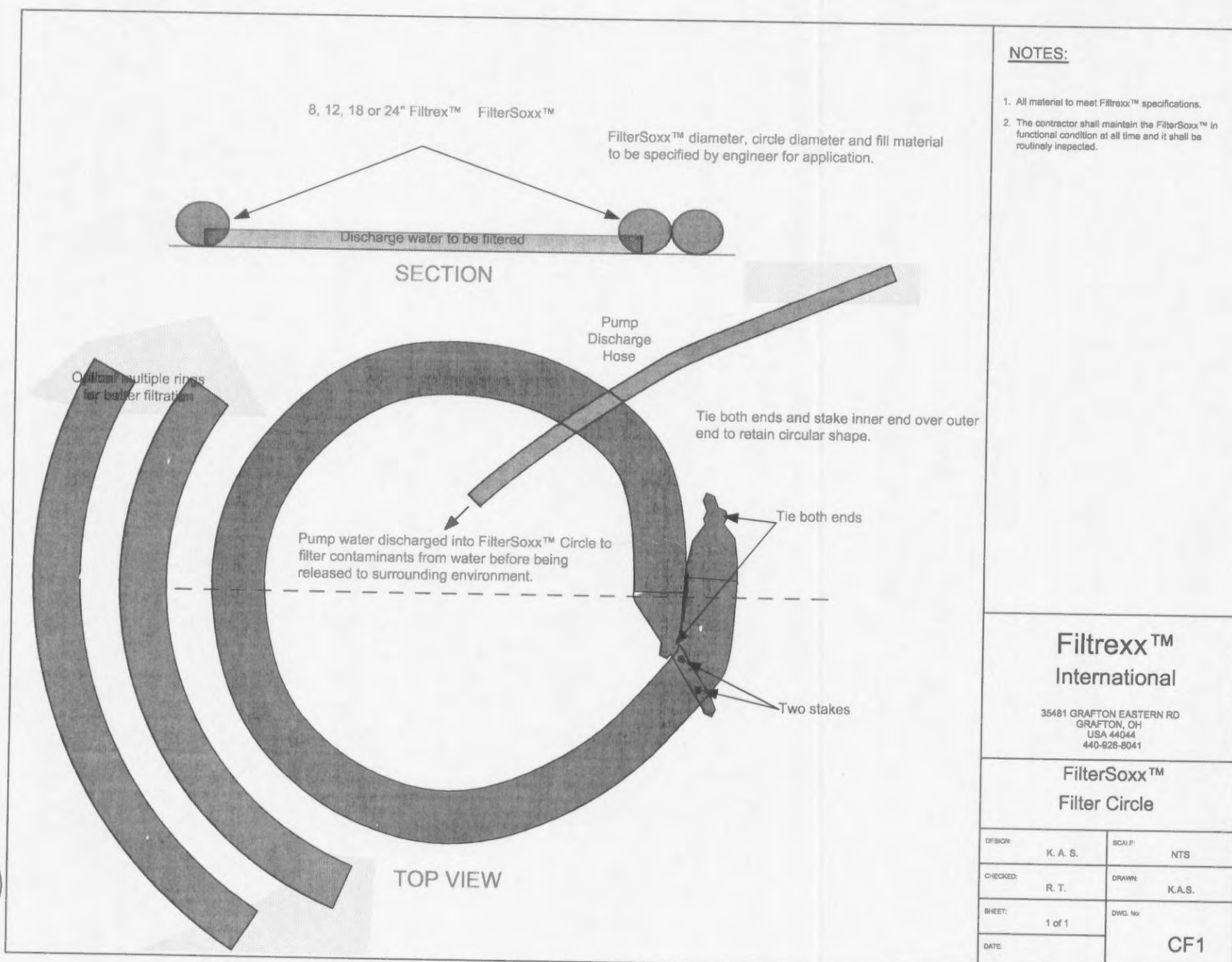
17



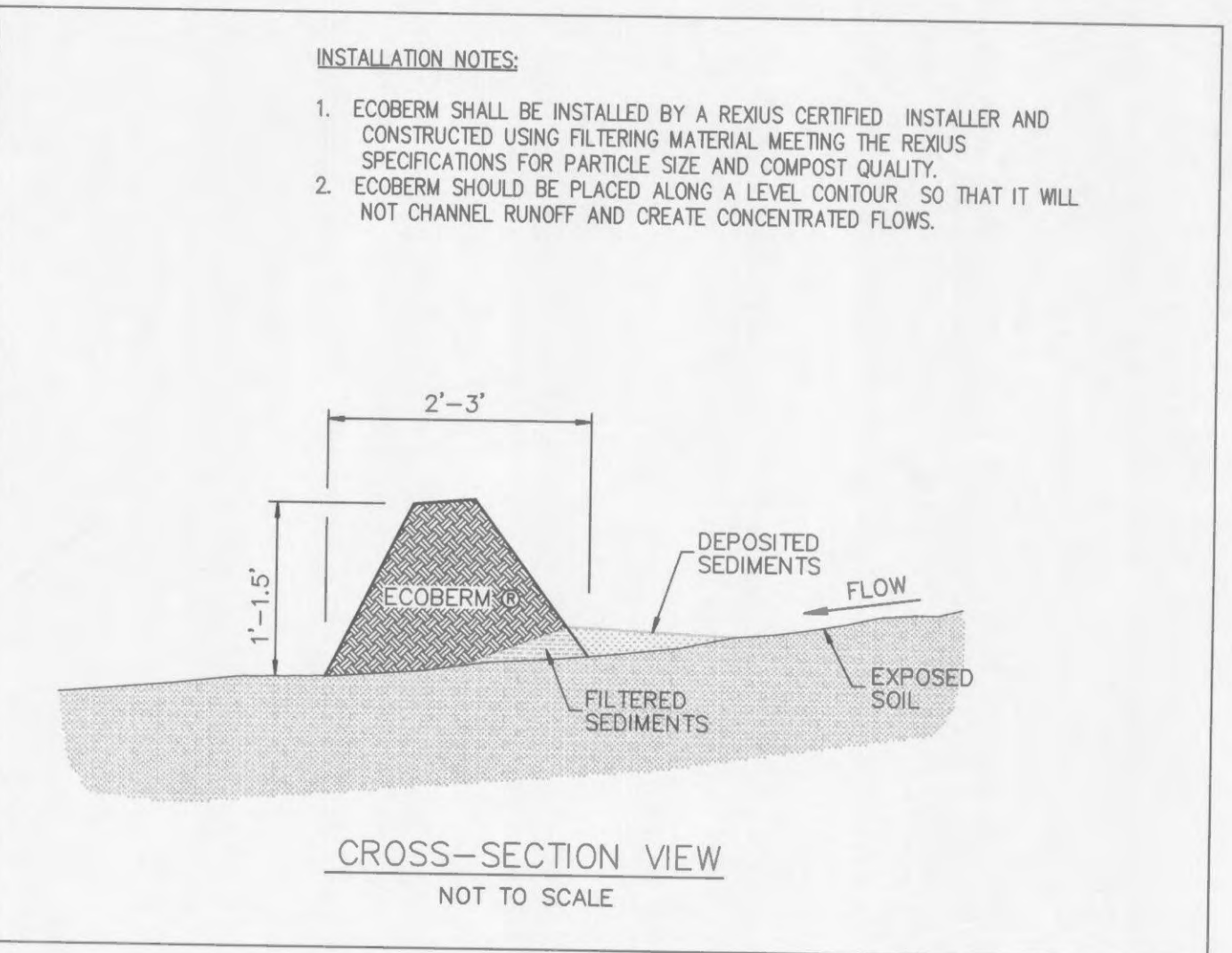
21



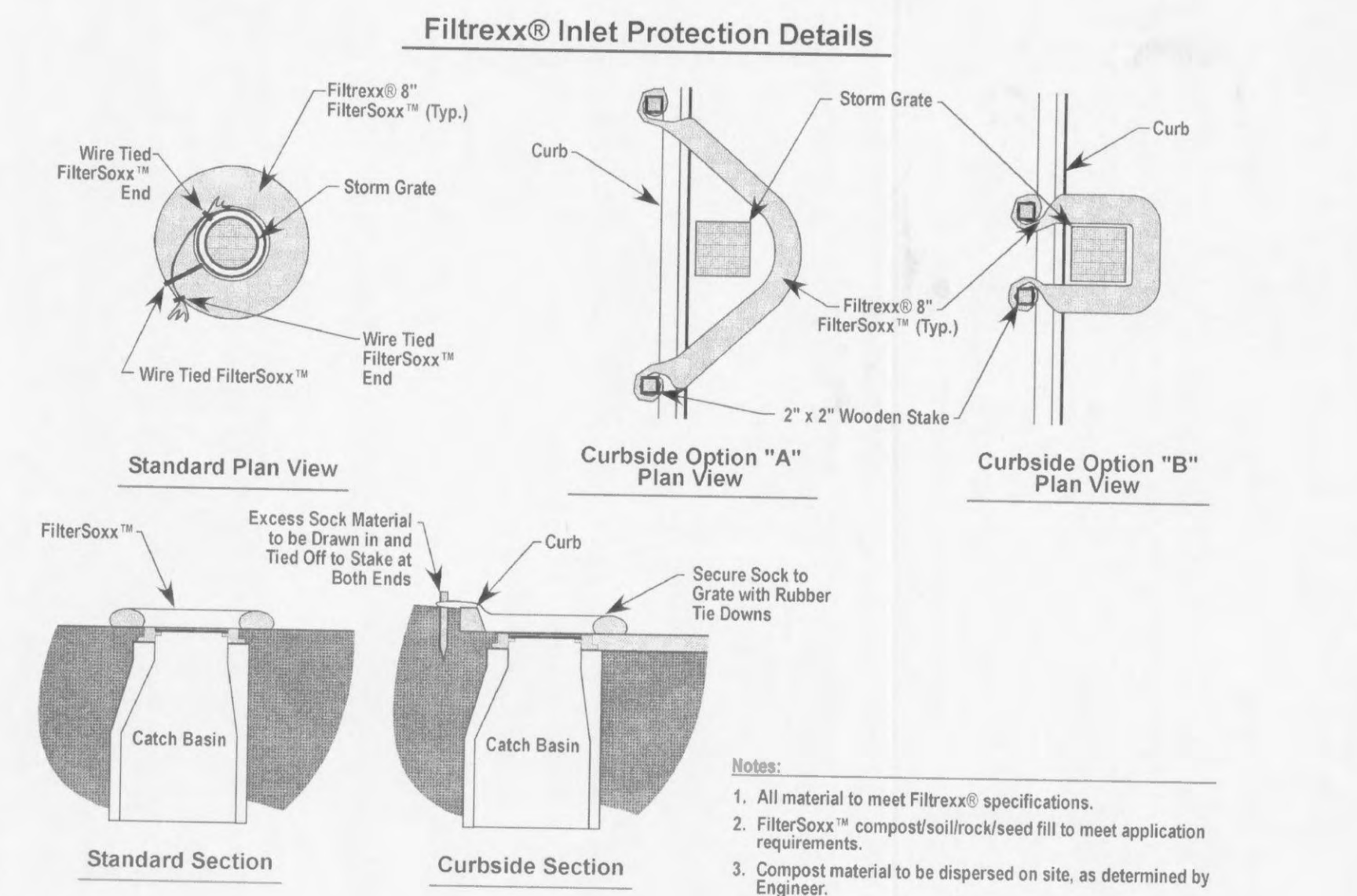
18



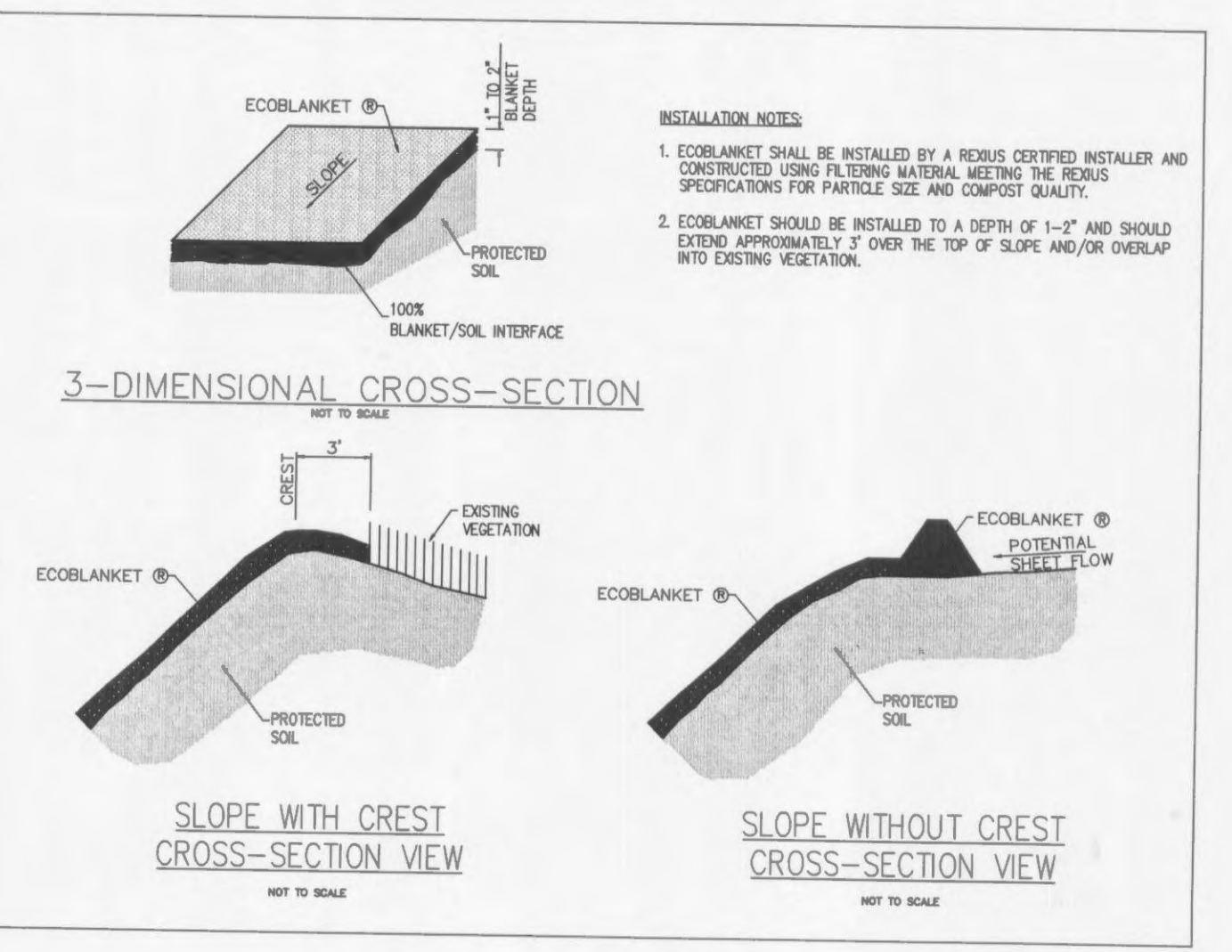
15



19



16



20

DETAILS COURTESY OF:
FILTREXX
 6 SILVER LEAF COURT
 LAKE ST. LOUIS, MO. 63367
 ATTN: Rob Carrothers & Shawn Garland
 TEL: 636-561-3158
 FAX: 636-561-3159
 soil-telmo@centurytel.net

MoDOT, WATER COMMENTS 11/10/06
 CITY, MoDOT, FIRE COMMENTS 11/7/06

GOLD'S GYM - O'FALLON, MO
EROSION CONTROL DETAILS

STOCK & ASSOCIATES
Consulting Engineers, Inc.

257 Chesterfield Business Parkway
 St. Louis, MO 63005
 PH. (636) 530-9100
 FAX (636) 530-9130
 e-mail: general@stockassoc.com
 Web: www.stockassoc.com

DRAWN BY: H.L.T. DATE: 8/14/06 CHECKED BY: C.A.M. DATE: 8/14/06 DATE JOB NUMBER: 206-3850 SHEET: C6

C:\DATA\2006\20060820\20060820.dwg, 11/20/2006, 3:27:15 PM, CPT 59900 (Rev. 10/14/06)