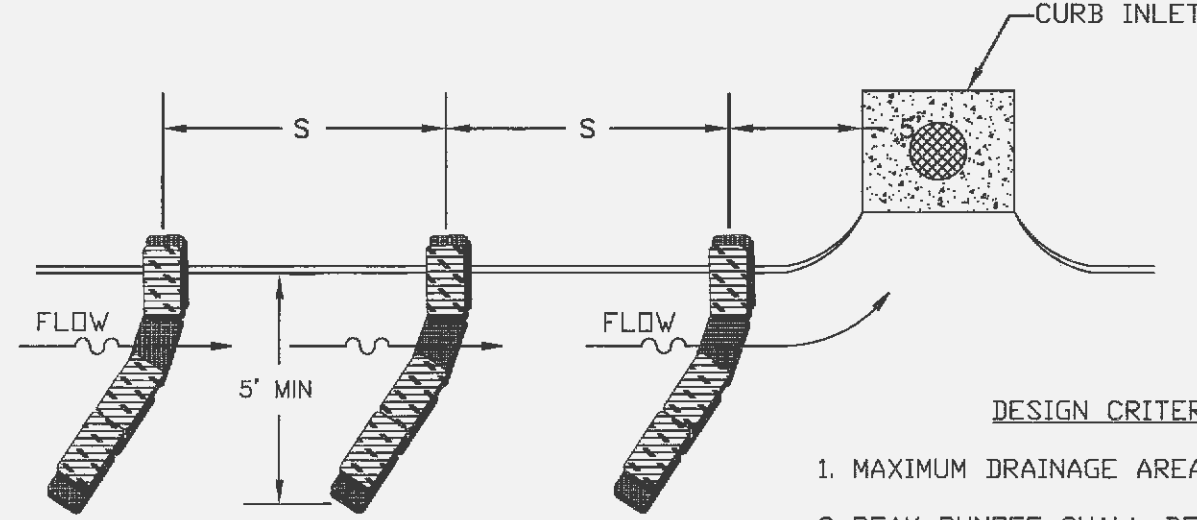


TRAP PLACEMENT AT LOW POINT



TRAP PLACEMENT AT INTERMEDIATE INLET

SILT SOCK (ALTERNATIVE)

SPACING OF TRAPS

OUTLET SLOPE	S
LOW FT	15'
1X	20'
2X	15'
3X MAX.	10'

DESIGN CRITERIA

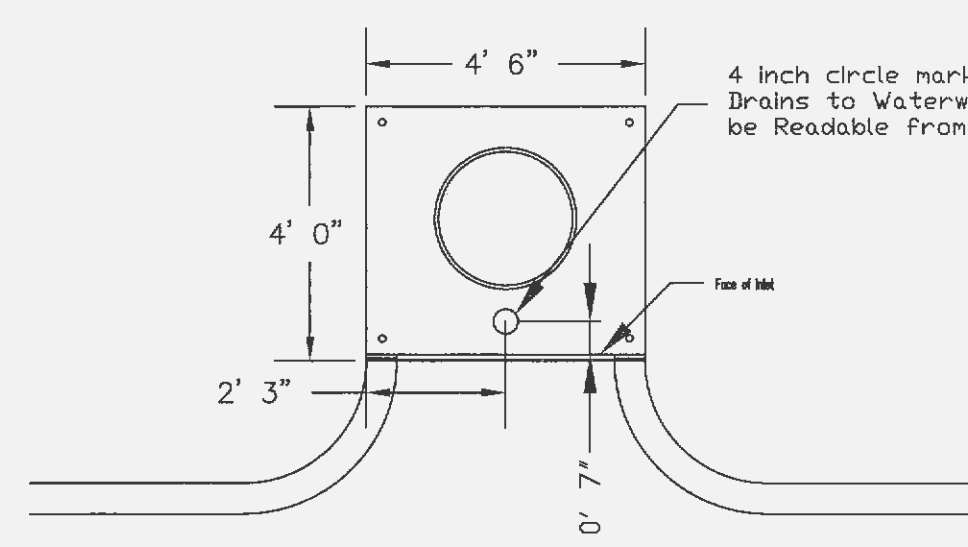
1. MAXIMUM DRAINAGE AREA - 1 ACRE.
2. PEAK RUNOFF SHALL BE  $\leq 2$  CFS BASED ON THE 6-MONTH STORM.
3. STACK GRAVEL BAGS DOUBLE HIGH. PROVIDE GAP FOR DRAINAGE.

CITY OF O'FALLON  
ENGINEERING DEPARTMENT  
O'FALLON, MISSOURI

**CURB INLET PROTECTION**

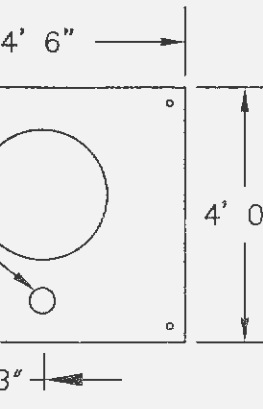
\* The City of O'Fallon must be provided with a symbol/medallion for review and approval prior to installation. Contact the City if any information is needed.

Size	Style	Adhesive	Message (Part #)
3 7/8" TO 4"	Crystal Cap or Standard Style	Epoxy	No Dumping Drains to Waterway



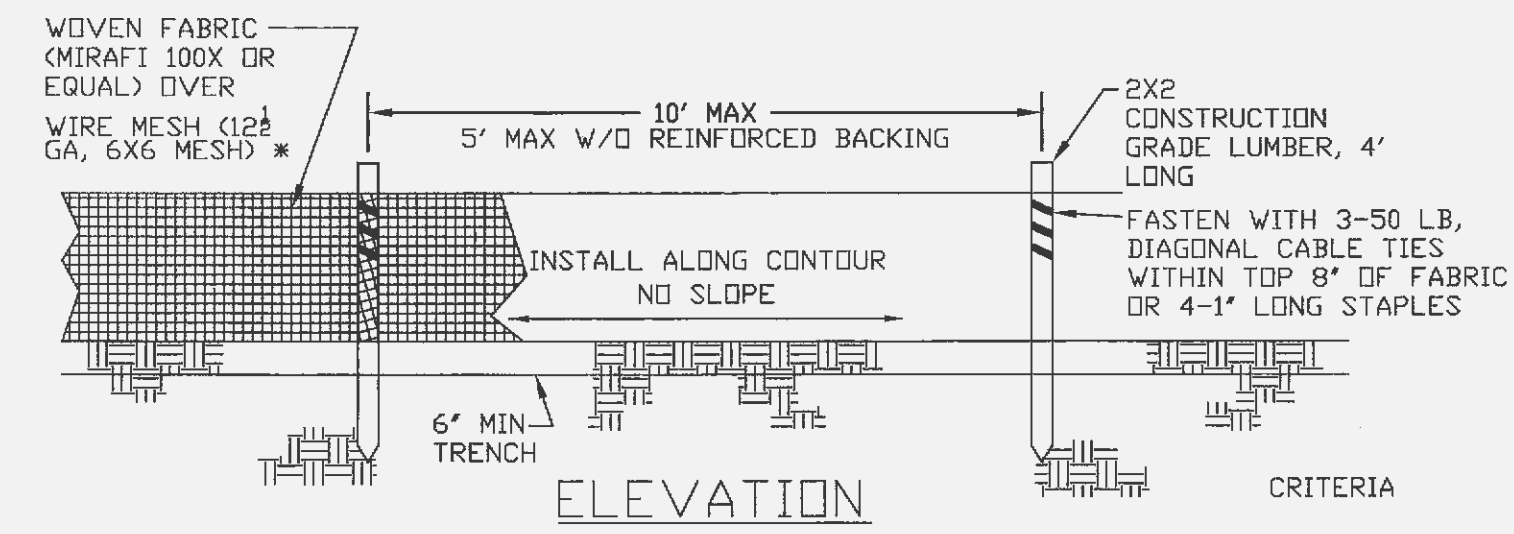
PLAN VIEW OF CURB INLET

PLAN VIEW OF AREA INLET

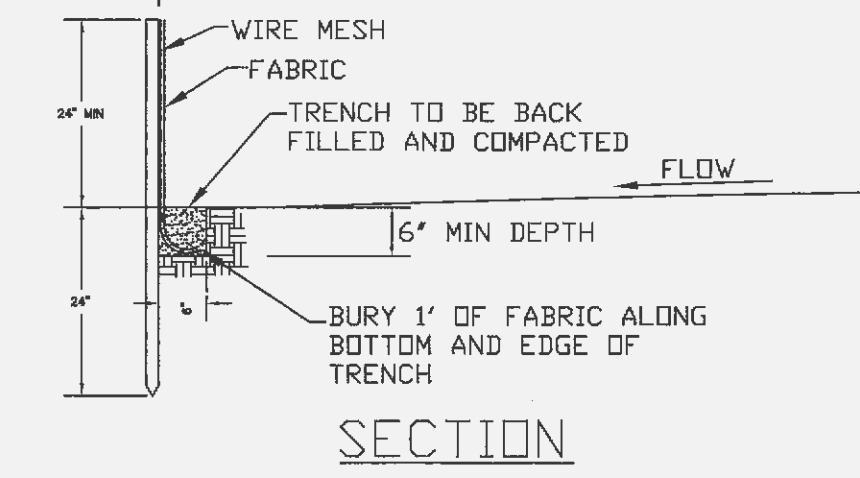


CITY OF O'FALLON  
ENGINEERING DEPARTMENT  
O'FALLON, MISSOURI

**STORM DRAIN MARKER LOCATION**



ELEVATION



SECTION



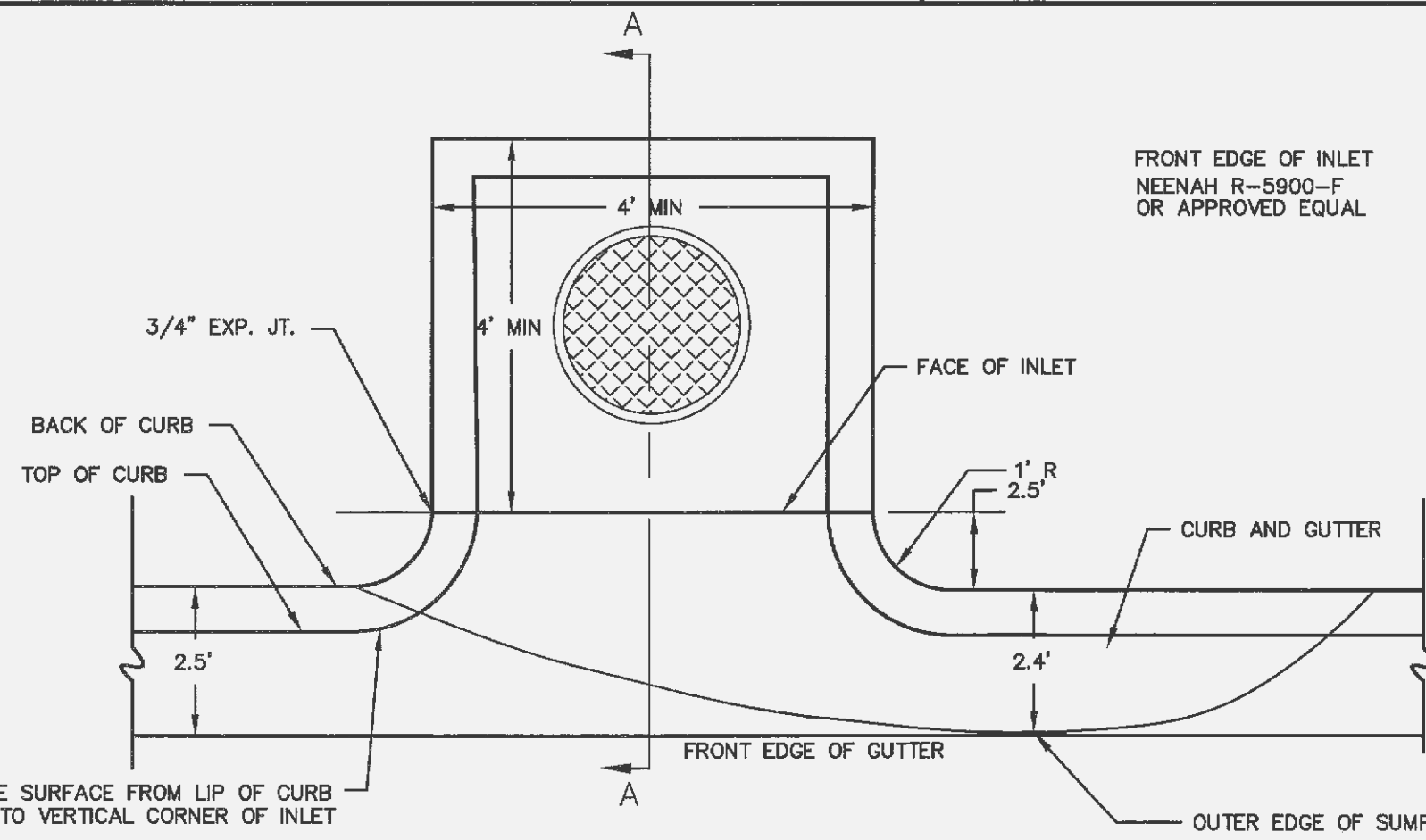
JOINING SECTIONS OF SILT FENCE

CRITERIA

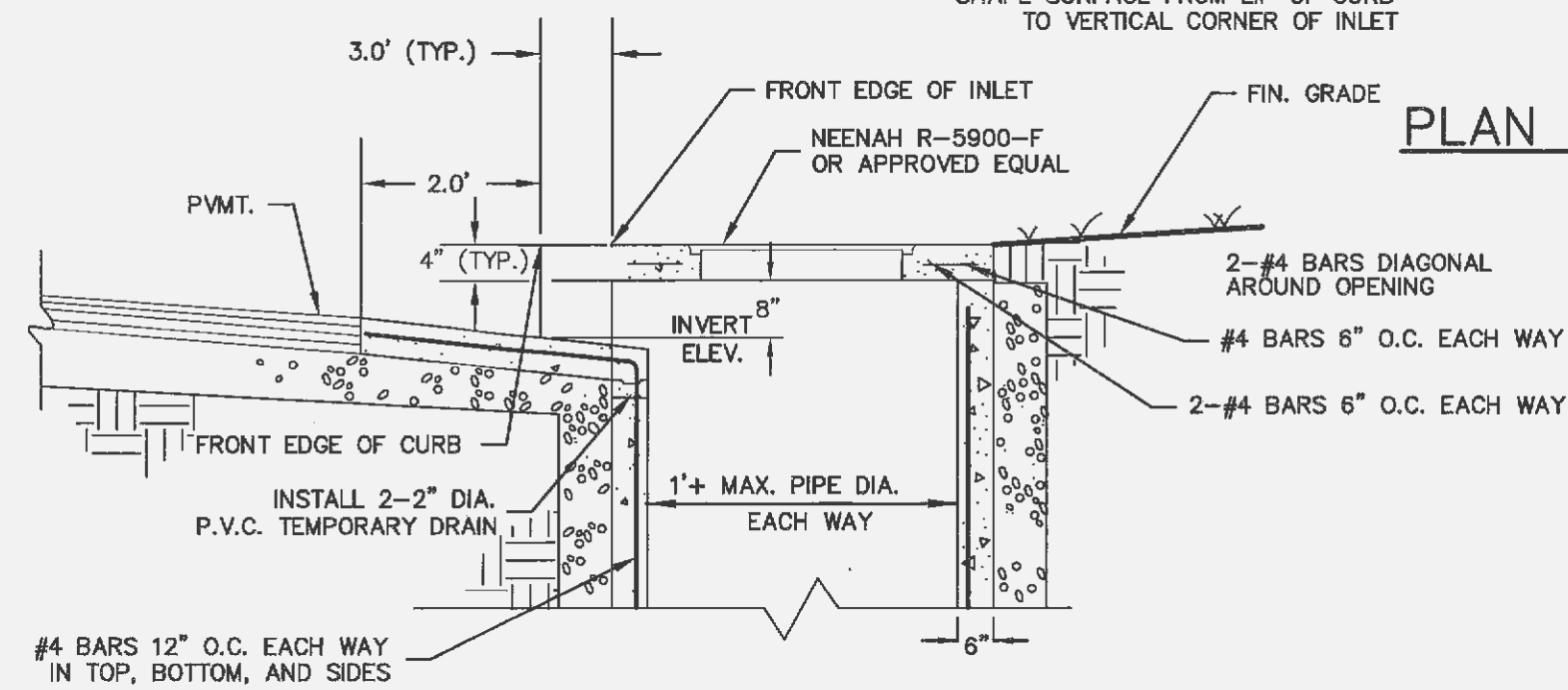
1. SILT FENCE SHALL BE 24 INCHES HIGH.
2. SILT FENCE SHALL NOT BE USED FOR CONCENTRATED FLOWS.
3. GEOSYNTHETIC REINFORCED SILT FENCE BACKING MAY BE USED IN LIEU OF WIRE MESH.
4. WIRE MESH WILL BE USED AT LOCATIONS SHOWN ON THE APPROVED SWPPP.

CITY OF O'FALLON  
ENGINEERING DEPARTMENT  
O'FALLON, MISSOURI

**SILT FENCE INSTALLATION SHEET FLOW (ONLY)**



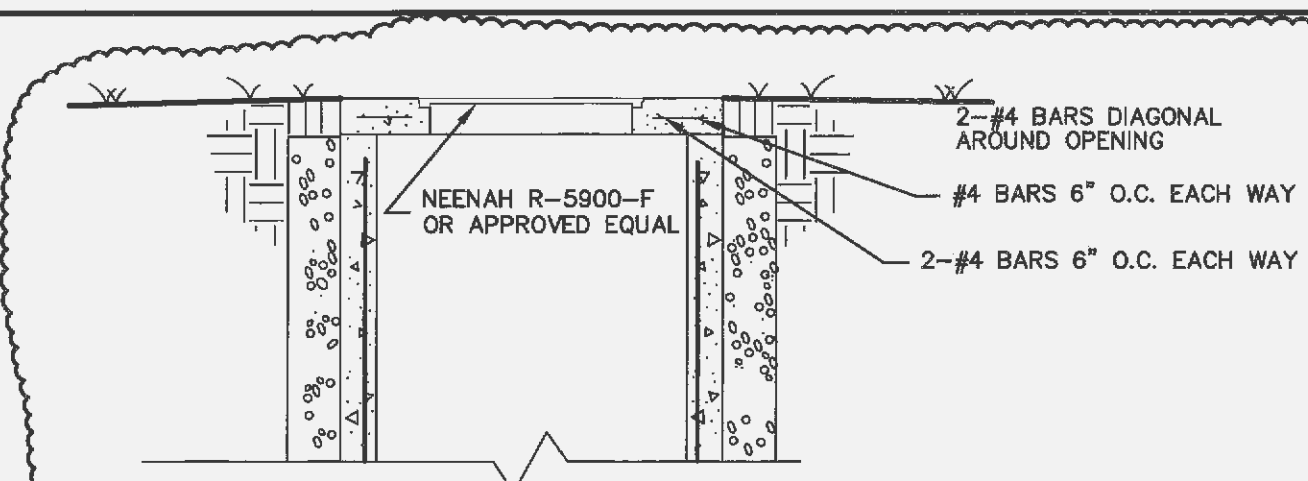
PLAN OF GUTTER SUMP



SECTION A-A SQUARE

NOTE:  
A 5/8" TRASH BAR SHALL BE CENTERED WITHIN THE OPENINGS OF ALL INLETS

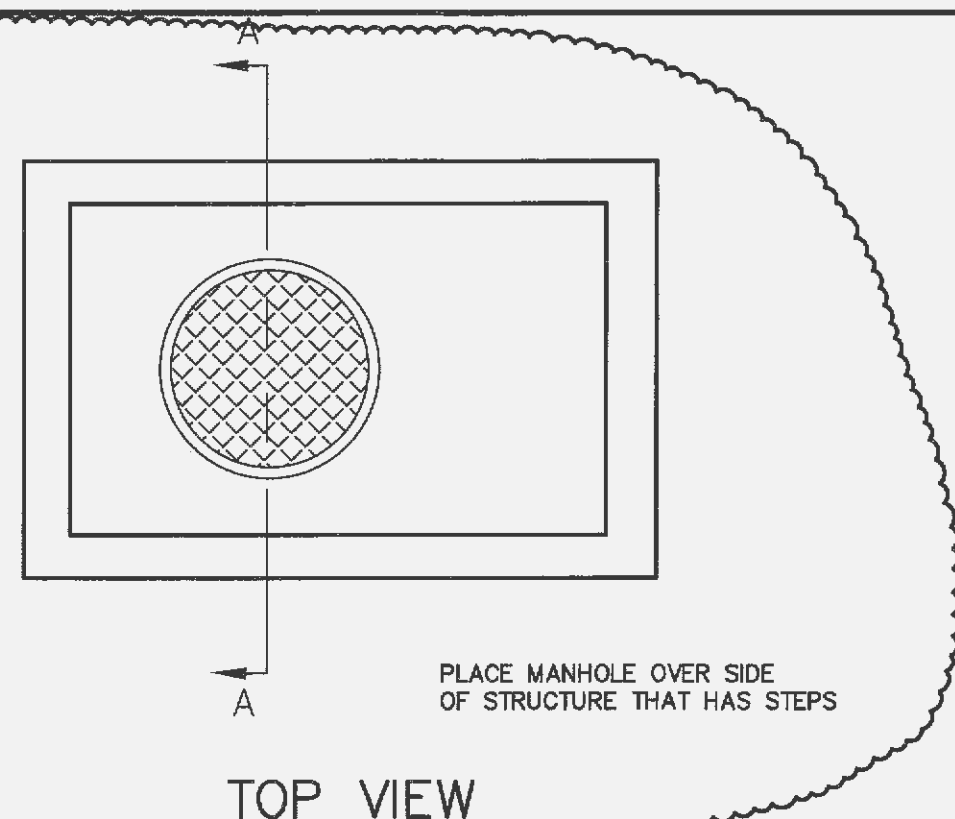
TYPE "A" TOP CURB INLET DETAIL  
NO SCALE



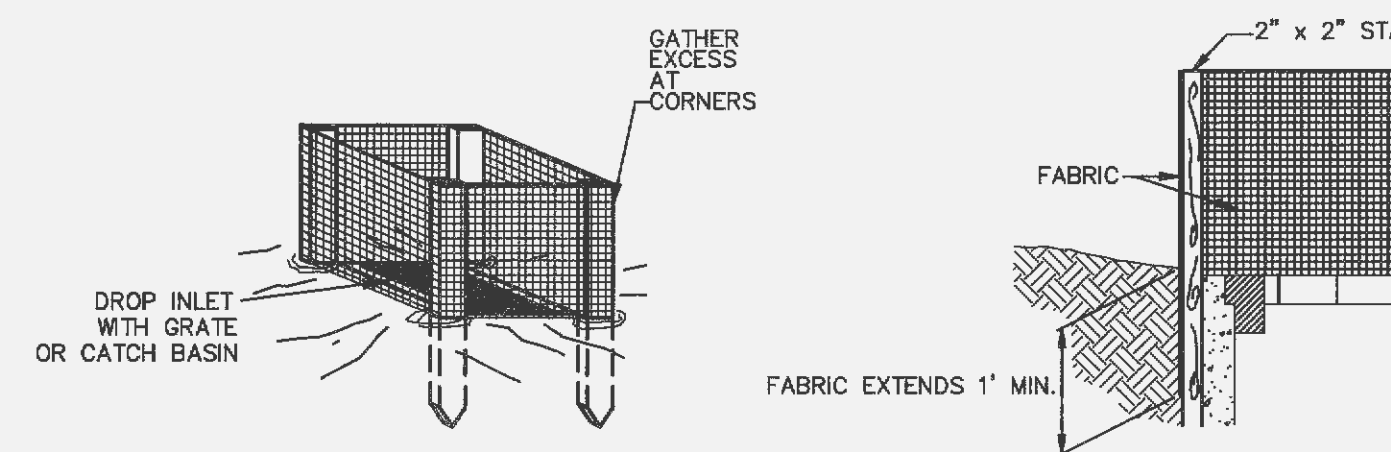
SECTION A-A SQUARE

#4 BARS 12" O.C. EACH WAY IN TOP, BOTTOM, & SIDES

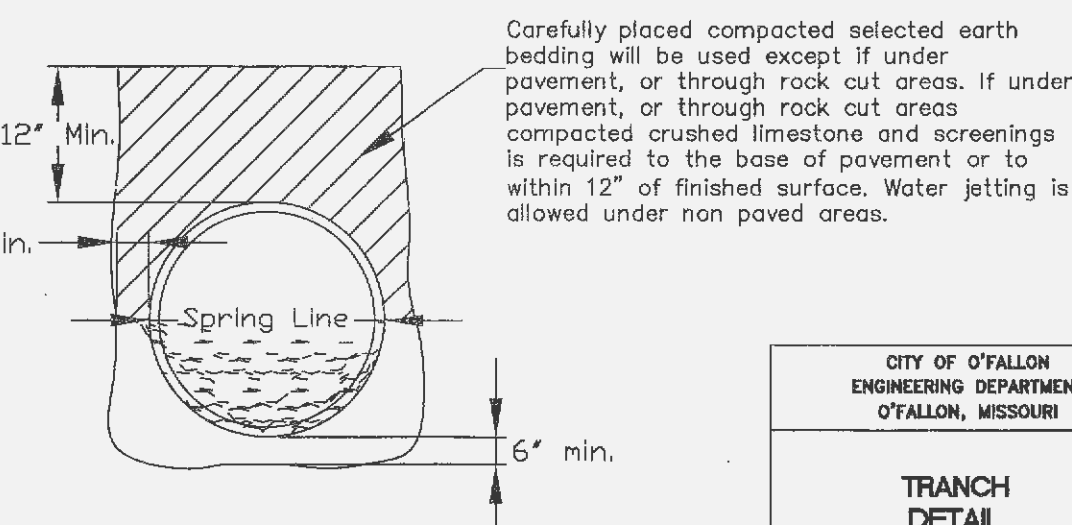
SOLID TOP INLET DETAIL  
NO SCALE



TOP VIEW

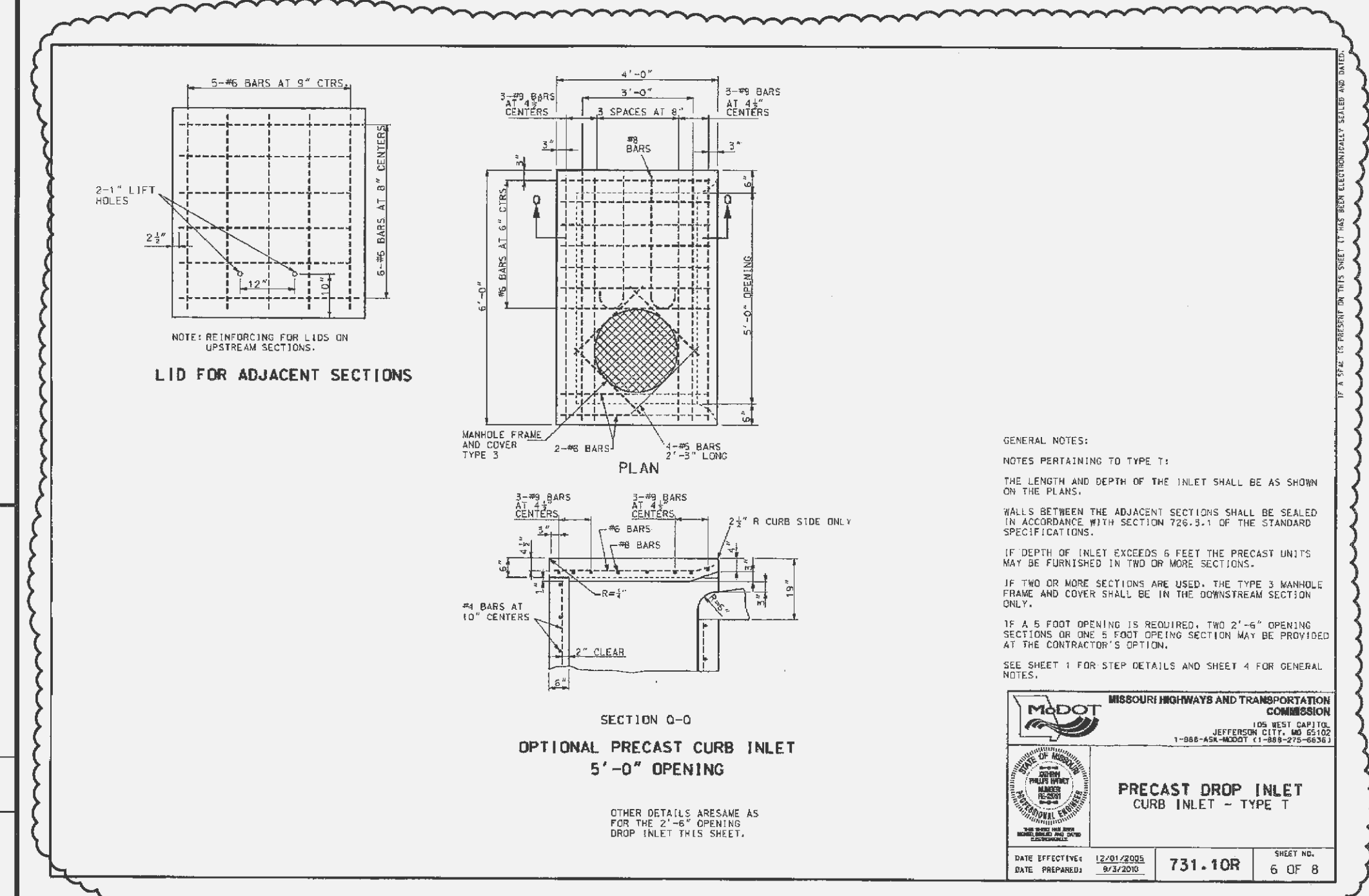


SILT FENCE INLET PROTECTION  
NO SCALE



CITY OF O'FALLON  
ENGINEERING DEPARTMENT  
O'FALLON, MISSOURI

**TRANCH DETAIL**



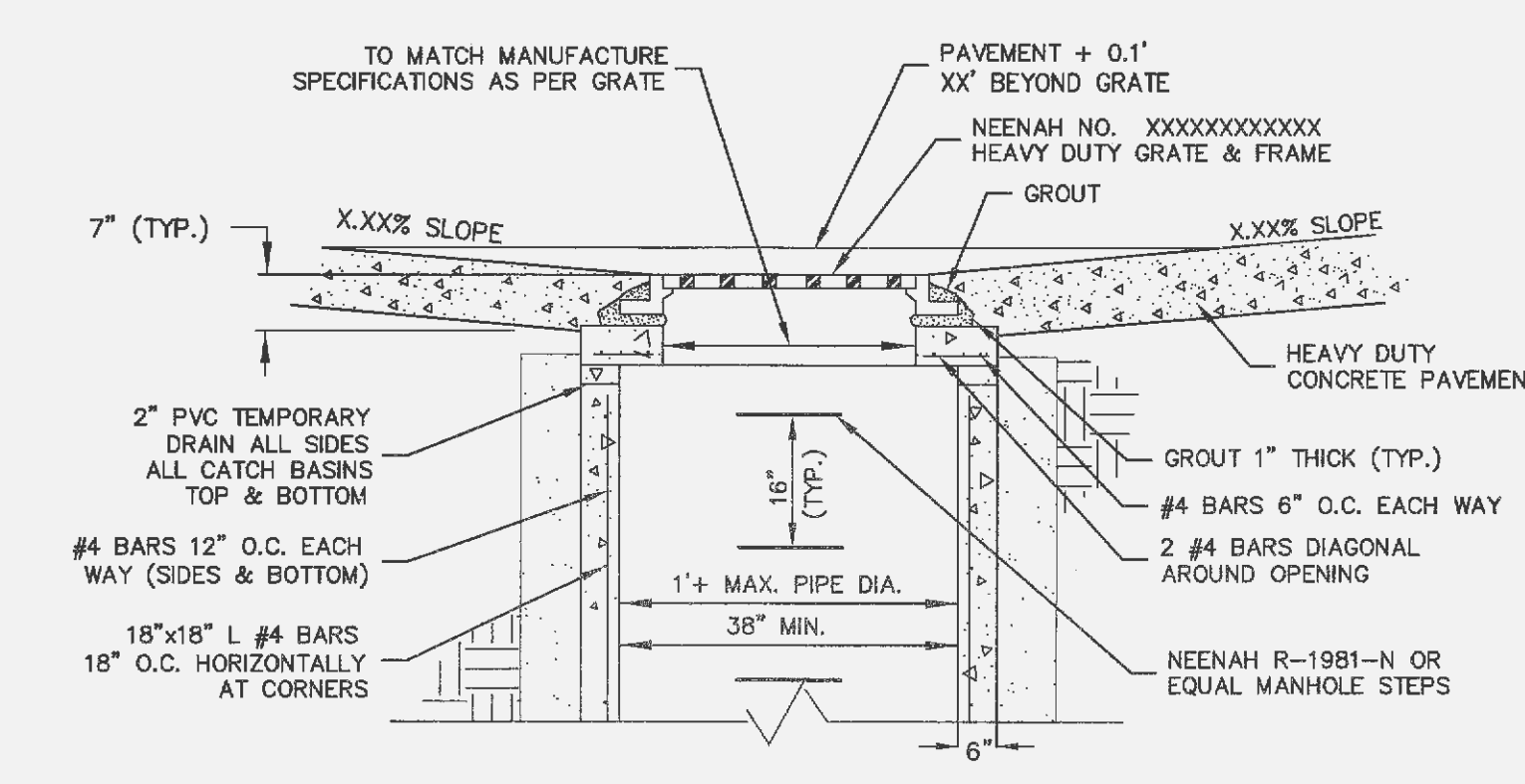
LID FOR ADJACENT SECTIONS

OPTIONAL PRECAST CURB INLET 5'-0" OPENING

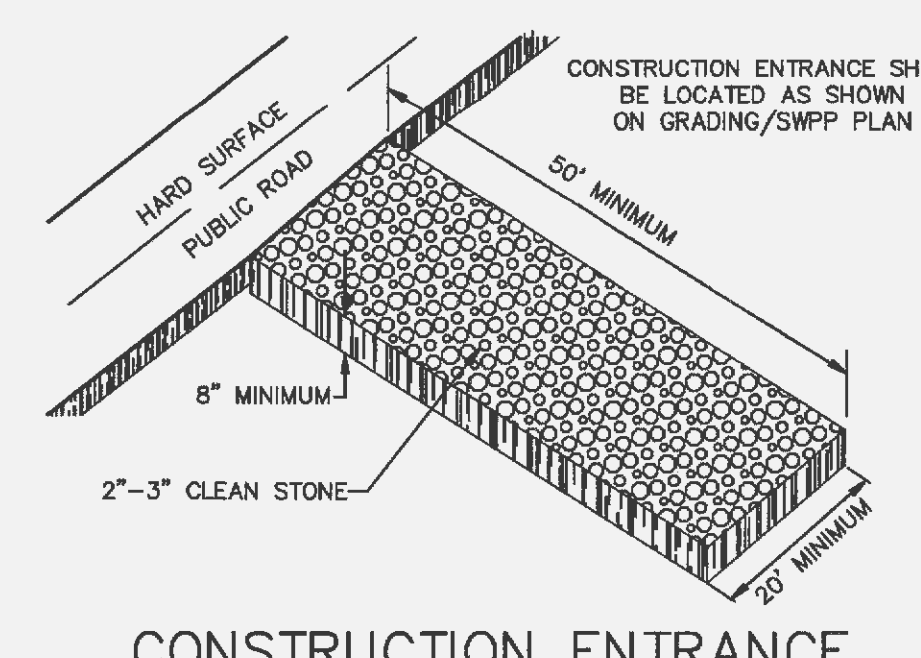
MISSOURI HIGHWAYS AND TRANSPORTATION COMMISSION

PRECAST DROP INLET CURB INLET - TYPE E

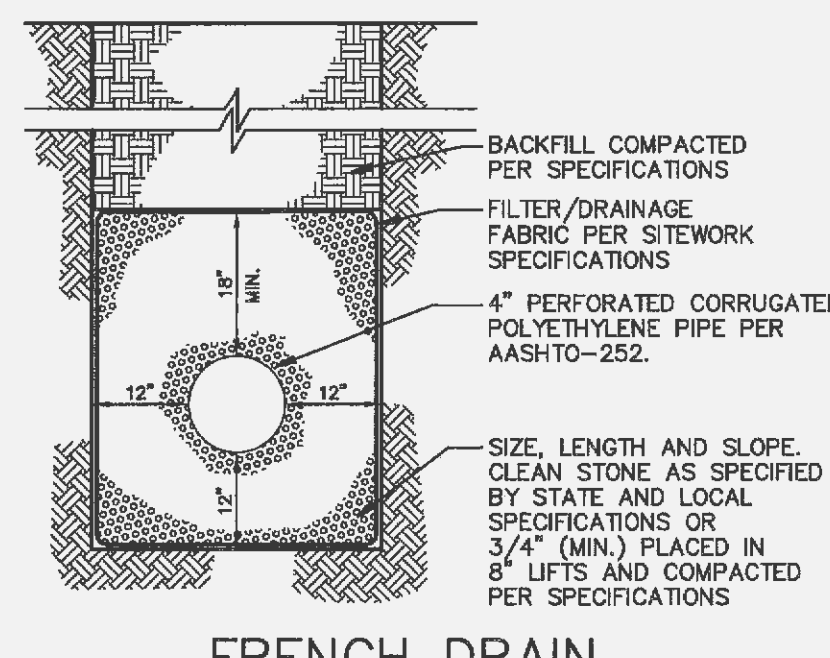
DATE PREPARED: 11/10/05  
DATE REVISION: 03/2007  
SHEET NO: 731.10R  
OF 8



TYPE "D" GRATED INLET DETAIL  
NO SCALE



CONSTRUCTION ENTRANCE  
NO SCALE



FRENCH DRAIN  
NO SCALE

REVISION DATE:  
11-19-13 PER CITY COMMENTS  
2-11-14 PER MODOT COMMENTS

MERS/GOODWILL

636-332-4574 (cell)  
636-327-0780 (fax)  
wents@cochrans.com  
63395

**COCHRAN**  
Civil Engineering  
Land Surveying  
Architecture  
Site Development  
General Consulting  
Master Planning

Eric Scott Kirchner  
E-2001004618  
Registered Professional Engineer  
State of Missouri  
for Cochran Engineering & Surveying

DATE

Eric S. Kirchner No. E-2001004618  
Registered Professional Engineer  
State of Missouri  
for Cochran Engineering & Surveying

Developer / Owner Information:  
Mers/Goodwill  
1727 Locust St.  
St. Louis, MO 63103  
314-241-3464

City of O'Fallon Standard Sheet

P+Z No.  
Approval Date: 01/03/2013  
City No. 18-12.02  
18-12.02.01

Page No.  
C10