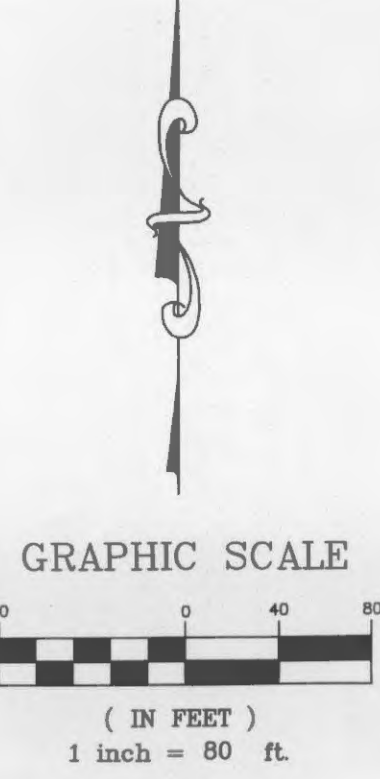
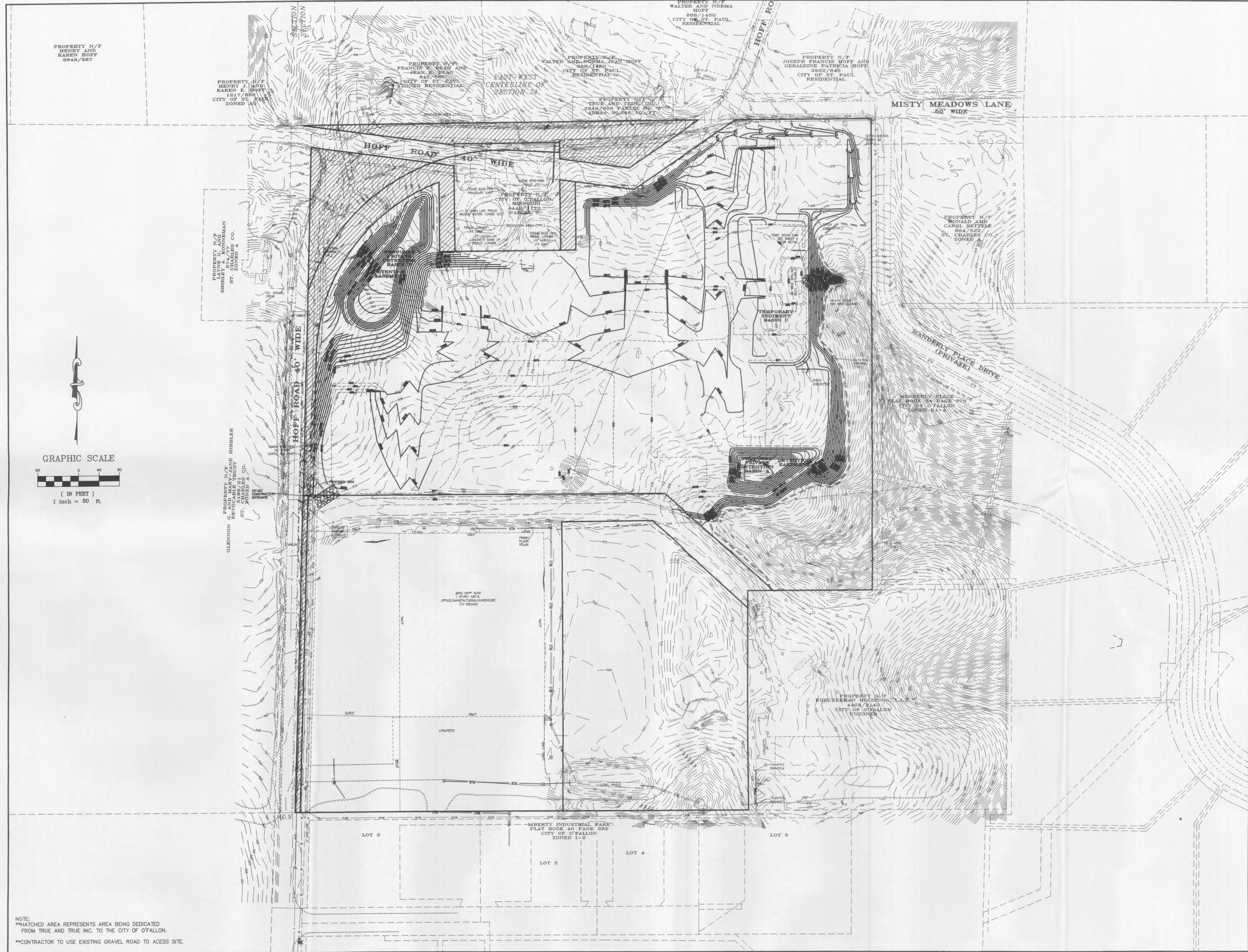


AN OVERALL SITE PLAN FOR
GRANT INDUSTRIAL PARK

01-11691B 10-5-07
 11-05-07 CITY COMMENTS
 01-28-08 REV. BASIN STRUCTURES
 03-10-08 OVERALL GRADING



NOTE:
 **HATCHED AREA REPRESENTS AREA BEING DEDICATED FROM TRUE AND TRUE INC. TO THE CITY OF O'FALLON.
 **CONTRACTOR TO USE EXISTING GRAVEL ROAD TO ACCESS SITE.

J:\DWG\11500PLUS\11691B-Hoff-Davis\Grading\11691Bgr.dwg, Site(2), 3/12/2008 12:48:03 PM, Sta 73 JM