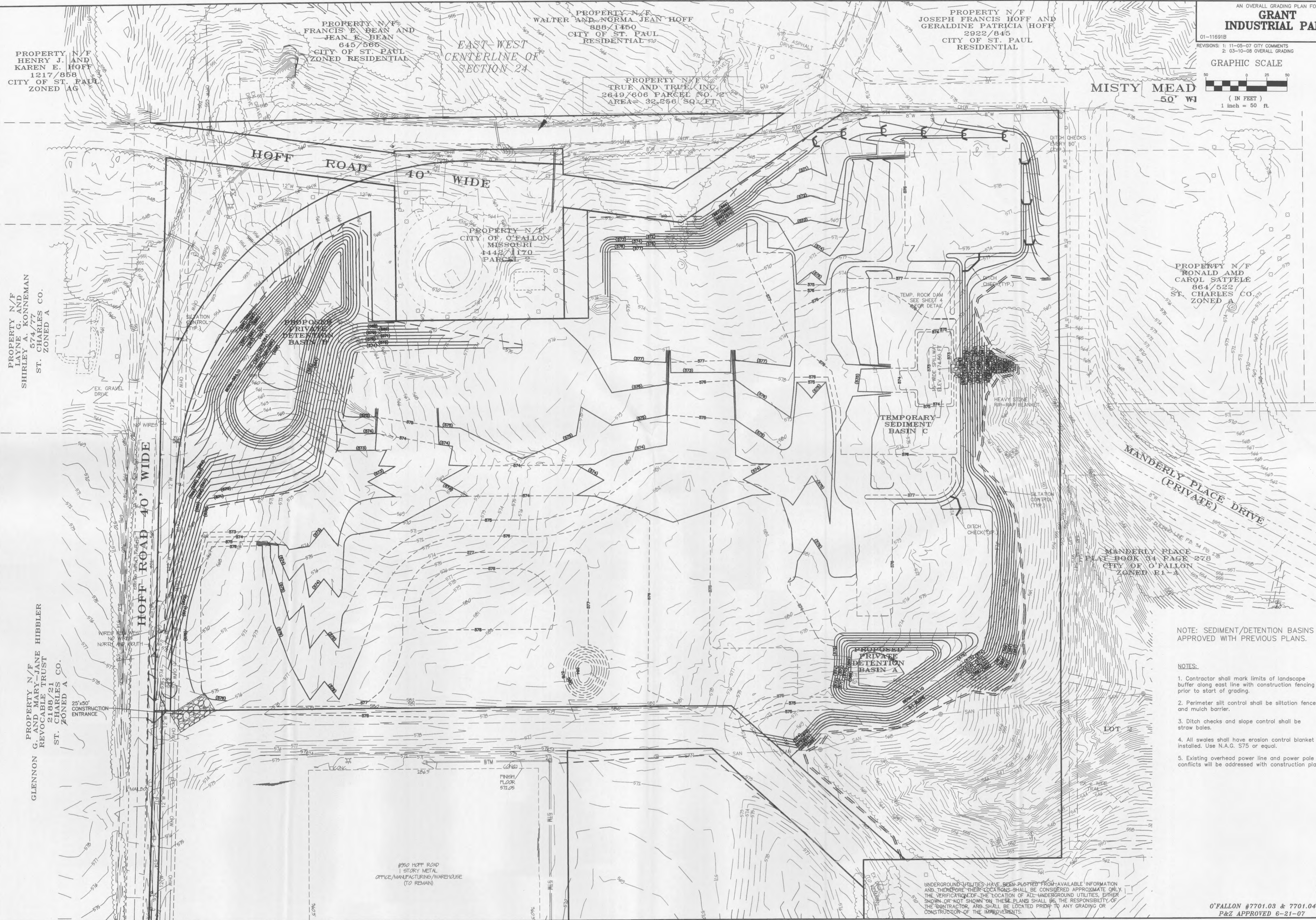
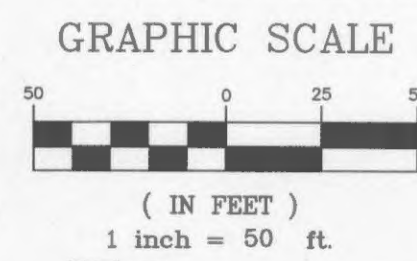


AN OVERALL GRADING PLAN FOR
GRANT INDUSTRIAL PARK

01-11691B 10-05-07
REVISIONS: 1: 11-05-07 CITY COMMENTS
2: 03-10-08 OVERALL GRADING



NOTE: SEDIMENT/DETENTION BASINS A & B APPROVED WITH PREVIOUS PLANS.

- NOTES:
- Contractor shall mark limits of landscape buffer along east line with construction fencing prior to start of grading.
 - Perimeter silt control shall be siltation fence and mulch barrier.
 - Ditch checks and slope control shall be straw bales.
 - All swales shall have erosion control blanket installed. Use N.A.G. S75 or equal.
 - Existing overhead power line and power pole conflicts will be addressed with construction plans.

D:\DWG\A11500PLUS\11691B-Hoff-Davis\Grading\11691Bgrade.dwg, Grading(3), 3/12/2008 12:47:17 PM, Sta 73 JM