

LITTLE BIG HORN DRIVE HORIZONTAL ALIGNMENT

Desc. Station	Curve Data	Northing	Easting
PI 0+00	Length: 883.81 Curve: N 30-29-23 E	11528.52495	11722.21418
PI 6489.81	Length: 157.45 Curve: N 30-51-24 E	12218.51456	11728.11854
0+00	Tangent Data	11528.52495	11722.21418
6489.81	Length: 618.08 Curve: N 30-29-23 E	12147.88014	11727.50766
PC 6419.08	Circular Curve Data	12147.88014	11727.50766
BP 7+36.94	Deflection: 50-22-01 Radius: 170.00 Length: 131.86 Mid-Ord: 14.26 Chord: 127.65 Ea: 15.76	12147.88014 12146.70304 12083.03884	11727.50766 11877.56220 11782.81308
PI 8+37.64	Length: 282.33 Curve: N 50-51-24 E	12147.92396	11850.22994
7+36.94	Tangent Data	12083.03884	11782.81308
PI 10+48.19	Length: 272.67 Curve: N 31-54-35 E	12475.82575	12044.38742
8+37.64	Tangent Data	12147.92396	11850.22994
PI 11+11.87	Length: 74.11 Curve: N 30-51-24 E	12347.98286	11967.69673
PC 9+11.87	Circular Curve Data	12347.98286	11967.69673
BP 12+00.57	Deflection: 10-45-58 Radius: 200.00 Length: 288.81 Mid-Ord: 49.84 Chord: 284.44 Ea: 98.96	12347.98286 12347.98286 12325.01551	11967.69673 11811.44458 11951.23220
PI 12+00.57	Length: 195.07 Curve: N 30-34-27 E	12325.01551	11951.23220
12+00.57	Tangent Data	12325.01551	11951.23220
12+45.63	Length: 52.75 Curve: N 31-54-35 E	12625.57552	11981.22130
PC 12+45.63	Circular Curve Data	12625.57552	11981.22130
BP 13+38.67	Deflection: 32-29-02 Radius: 150.00 Length: 86.04 Mid-Ord: 5.99 Chord: 83.11 Ea: 6.24	12625.57552 12625.57552 12575.98791	11981.22130 12050.68877 11900.01631
PI 14+00.04	Tangent Data	12625.57552	11981.22130
13+38.67	Tangent Data	12575.98791	11900.01631
14+00.04	Tangent Data	12625.57552	11981.22130

GREAT WARRIOR DRIVE HORIZONTAL ALIGNMENT

Desc. Station	Curve Data	Northing	Easting
PI 0+00	Length: 111.22 Curve: N 87-52-18 W	11836.87781	12529.44683
PI 1+11.22	Length: 44.41 Curve: S 70-52-51 W	11842.41422	12418.29668
0+00	Tangent Data	11836.87781	12529.44683
1+11.22	Length: 91.28 Curve: N 87-52-18 W	11842.41422	12418.29668
PC 0+91.28	Circular Curve Data	11842.41422	12418.29668
BP 1+30.34	Deflection: 15-06-51 Radius: 150.00 Length: 39.58 Mid-Ord: 1.31 Chord: 38.54 Ea: 1.32	11842.41422 11842.41422 11838.28717	12436.22244 12432.91172 12398.88698
PI 1+55.41	Length: 24.39 Curve: S 58-21-02 W	11852.73322	12375.03596
1+55.41	Tangent Data	11852.73322	12375.03596
PC 1+30.34	Circular Curve Data	11838.28717	12398.88698
BP 1+70.75	Deflection: 18-31-48 Radius: 150.00 Length: 48.51 Mid-Ord: 1.95 Chord: 48.30 Ea: 1.98	11838.28717 11838.28717 11819.89340	12398.88698 12424.91372 12394.30559
PI 2+79.17	Length: 205.72 Curve: S 58-21-02 W	11787.58966	12289.31871
1+55.41	Tangent Data	11852.73322	12375.03596
PI 2+79.17	Length: 44.41 Curve: S 58-21-02 W	11787.58966	12289.31871
2+79.17	Tangent Data	11787.58966	12289.31871
PC 2+79.17	Circular Curve Data	11787.58966	12289.31871
BP 3+26.01	Deflection: 32-18-48 Radius: 150.00 Length: 84.60 Mid-Ord: 5.52 Chord: 83.48 Ea: 6.17	11787.58966 11787.58966 11769.19590	12289.31871 12313.18888 12254.20559
PI 4+24.85	Length: 370.85 Curve: N 89-20-10 W	11609.62347	12094.19352
2+79.17	Tangent Data	11787.58966	12289.31871
4+24.85	Tangent Data	11609.62347	12094.19352
PC 4+24.85	Circular Curve Data	11609.62347	12094.19352
BP 5+26.01	Deflection: 32-18-48 Radius: 150.00 Length: 84.60 Mid-Ord: 5.52 Chord: 83.48 Ea: 6.17	11609.62347 11609.62347 11591.23020	12094.19352 12128.03745 12050.74034
PI 5+26.01	Length: 327.79 Curve: N 89-20-10 W	11591.23020	12050.74034
5+26.01	Tangent Data	11591.23020	12050.74034

LITTLE BRAVE DRIVE HORIZONTAL ALIGNMENT

Desc. Station	Curve Data	Northing	Easting
PI 0+00	Length: 54.80 Curve: N 13-07-09 W	11838.28731	12398.88698
PI 0+54.80	Length: 336.32 Curve: N 00-21-36 W	11891.46453	12366.47343
0+00	Tangent Data	11838.28731	12398.88698
0+54.80	Length: 37.83 Curve: N 13-07-09 W	11875.13110	12390.25012
PC 0+37.83	Circular Curve Data	11875.13110	12390.25012
BP 0+71.23	Deflection: 12-45-33 Radius: 150.00 Length: 33.80 Mid-Ord: 0.93 Chord: 33.33 Ea: 0.93	11875.13110 11875.13110 11908.23537	12398.88698 12386.47343 12398.88698
PI 3+43.78	Length: 292.85 Curve: N 00-21-36 W	12290.72421	12384.52945
0+54.80	Tangent Data	11875.13110	12390.25012
PI 3+43.78	Length: 292.85 Curve: N 00-21-36 W	12290.72421	12384.52945
3+43.78	Tangent Data	12290.72421	12384.52945
PC 3+43.78	Circular Curve Data	12290.72421	12384.52945
BP 3+83.63	Deflection: 12-45-33 Radius: 150.00 Length: 33.80 Mid-Ord: 0.93 Chord: 33.33 Ea: 0.93	12290.72421 12290.72421 12304.50995	12384.52945 12386.47343 12384.52945
PI 5+49.63	Length: 292.85 Curve: N 00-21-36 W	12693.62012	12392.88992
3+43.78	Tangent Data	12290.72421	12384.52945
5+49.63	Tangent Data	12693.62012	12392.88992

CROW COURT HORIZONTAL ALIGNMENT

Desc. Station	Curve Data	Northing	Easting
PI 0+00	Length: 112.81 Curve: S 31-30-58 E	11787.58968	12289.31871
PI 1+12.81	Length: 11671.53306	12328.51479	12328.51479
0+00	Tangent Data	11787.58968	12289.31871
1+12.81	Length: 112.81 Curve: S 31-30-58 E	11671.53306	12328.51479
PC 1+12.81	Circular Curve Data	11671.53306	12328.51479
BP 1+52.66	Deflection: 12-45-33 Radius: 150.00 Length: 33.80 Mid-Ord: 0.93 Chord: 33.33 Ea: 0.93	11671.53306 11671.53306 11704.50995	12328.51479 12328.51479 12328.51479
PI 3+43.78	Length: 292.85 Curve: N 00-21-36 W	12290.72421	12384.52945
1+12.81	Tangent Data	11671.53306	12328.51479
PI 3+43.78	Length: 292.85 Curve: N 00-21-36 W	12290.72421	12384.52945
3+43.78	Tangent Data	12290.72421	12384.52945
PC 3+43.78	Circular Curve Data	12290.72421	12384.52945
BP 3+83.63	Deflection: 12-45-33 Radius: 150.00 Length: 33.80 Mid-Ord: 0.93 Chord: 33.33 Ea: 0.93	12290.72421 12290.72421 12304.50995	12384.52945 12386.47343 12384.52945
PI 5+49.63	Length: 292.85 Curve: N 00-21-36 W	12693.62012	12392.88992
3+43.78	Tangent Data	12290.72421	12384.52945
5+49.63	Tangent Data	12693.62012	12392.88992

COCHISE DRIVE HORIZONTAL ALIGNMENT

Desc. Station	Curve Data	Northing	Easting
PI 0+00	Length: 590.41 Curve: N 89-25-33 W	12787.43627	11900.84036
PI 5+90.41	Length: 408.51 Curve: S 15-38-21 E	12773.07451	11340.41115
0+00	Tangent Data	12787.43627	11900.84036
5+90.41	Length: 227.41 Curve: N 89-25-33 W	12768.73708	11873.44430
PC 5+90.41	Circular Curve Data	12768.73708	11873.44430
BP 6+90.25	Deflection: 106-12-48 Radius: 250.00 Length: 483.44 Mid-Ord: 399.89 Chord: 186.44	12768.73708 12768.73708 12452.33475	11873.44430 11873.44430 11430.19405
PI 8+16.21	Length: 45.48 Curve: S 51-09-23 E	12337.52893	11944.01699
6+90.25	Tangent Data	12452.33475	11430.19405
PI 8+16.21	Length: 45.48 Curve: S 51-09-23 E	12337.52893	11944.01699
8+16.21	Tangent Data	12337.52893	11944.01699
PC 8+16.21	Circular Curve Data	12337.52893	11944.01699
BP 8+56.69	Deflection: 35-31-02 Radius: 150.00 Length: 71.25 Mid-Ord: 5.40 Chord: 70.15 Ea: 5.25	12337.52893 12337.52893 12328.08564	11944.01699 11944.01699 11902.70311
PI 9+27.94	Length: 9.84 Curve: S 53-25-52 E	12328.08564	11902.70311
8+16.21	Tangent Data	12337.52893	11944.01699
9+27.94	Tangent Data	12328.08564	11902.70311

QUIVER DRIVE HORIZONTAL ALIGNMENT

Desc. Station	Curve Data	Northing	Easting
PI 0+00	Length: 540.27 Curve: N 89-48-21 E	12492.20480	11979.53871
PI 5+40.27	Length: 2494.08453	12519.80042	12519.80042
0+00	Tangent Data	12492.20480	11979.53871
5+40.27	Length: 540.27 Curve: N 89-48-21 E	12494.08453	12519.80042
PC 5+40.27	Circular Curve Data	12494.08453	12519.80042
BP 5+80.54	Deflection: 35-31-02 Radius: 150.00 Length: 71.25 Mid-Ord: 5.40 Chord: 70.15 Ea: 5.25	12494.08453 12494.08453 12504.50995	12519.80042 12519.80042 12519.80042
PI 6+51.79	Length: 9.84 Curve: S 53-25-52 E	12328.08564	11902.70311
5+40.27	Tangent Data	12494.08453	12519.80042
6+51.79	Tangent Data	12328.08564	11902.70311

COCHISE COURT HORIZONTAL ALIGNMENT

Desc. Station	Curve Data	Northing	Easting
PI 0+00	Length: 225.17 Curve: S 89-25-33 E	12787.43627	11900.84036
PI 2+25.17	Length: 48.45 Curve: N 55-03-25 E	12784.70803	12175.98794
0+00	Tangent Data	12787.43627	11900.84036
2+25.17	Length: 236.34 Curve: S 89-25-33 E	12780.89398	12178.18588
PC 2+25.17	Circular Curve Data	12780.89398	12178.18588
BP 2+73.62	Deflection: 35-31-02 Radius: 150.00 Length: 71.25 Mid-Ord: 5.40 Chord: 70.15 Ea: 5.25	12780.89398 12780.89398 12769.78163	12178.18588 12140.32119 12098.19920
PI 3+44.87	Length: 12781.52040	12214.06200	12214.06200
2+25.17	Tangent Data	12780.89398	12178.18588
PI 3+44.87	Length: 12781.52040	12214.06200	12214.06200
3+44.87	Tangent Data	12214.06200	12214.06200
PC 3+44.87	Circular Curve Data	12214.06200	12214.06200
BP 3+84.13	Deflection: 35-31-02 Radius: 150.00 Length: 71.25 Mid-Ord: 5.40 Chord: 70.15 Ea: 5.25	12214.06200 12214.06200 12204.50995	12214.06200 12214.06200 12214.06200
PI 4+55.38	Length: 9.84 Curve: N 50-51-24 E	12625.57552	11981.22130
3+44.87	Tangent Data	12214.06200	12214.06200
4+55.38	Tangent Data	12625.57552	11981.22130

BROKEN LANCE COURT HORIZONTAL ALIGNMENT

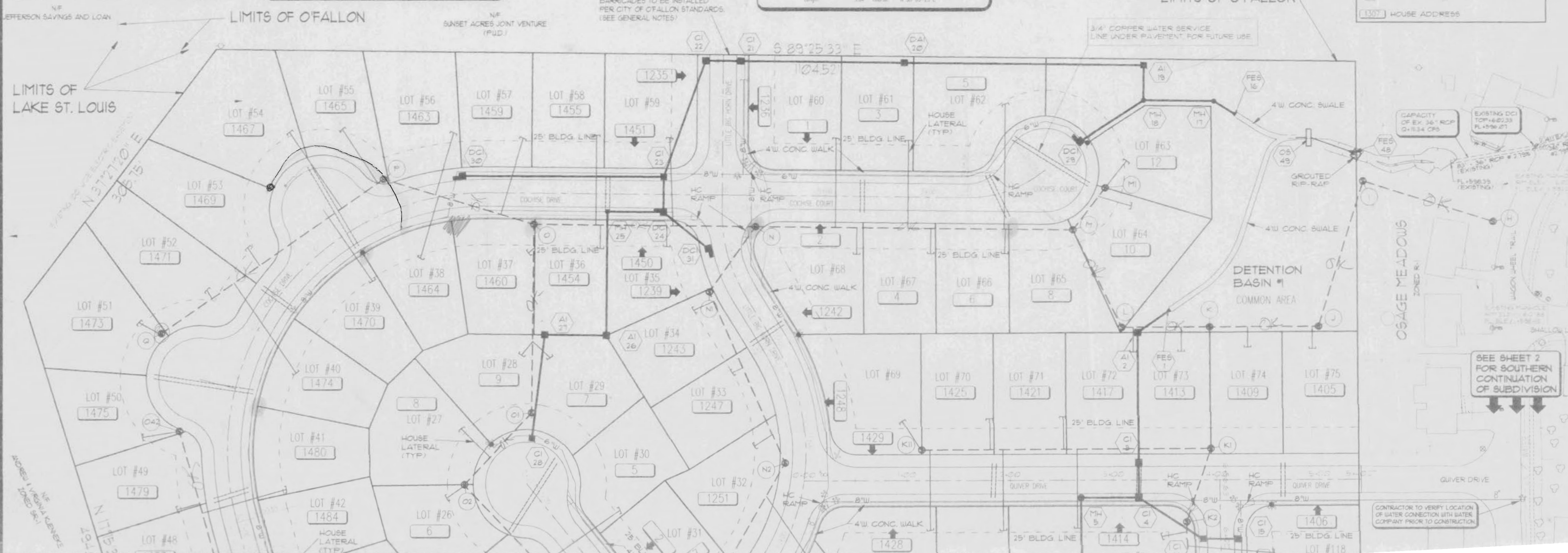
Desc. Station	Curve Data	Northing	Easting
PI 0+00	Length: 221.18 Curve: N 39-08-36 W	12317.90396	11550.22094
PI 2+21.18	Length: 221.18 Curve: N 39-08-36 W	12489.44148	11710.80127
0+00	Tangent Data	12317.90396	11550.22094
2+21.18	Length: 221.18 Curve: N 39-08-36 W	12489.44148	11710.80127
PC 2+21.18	Circular Curve Data	12489.44148	11710.80127
BP 2+61.03	Deflection: 35-31-02 Radius: 150.00 Length: 71.25 Mid-Ord: 5.40 Chord: 70.15 Ea: 5.25	12489.44148 12489.44148 12479.93193	11710.80127 11710.80127 11710.80127
PI 3+72.23	Length: 9.84 Curve: N 50-51-24 E	12625.57552	11981.22130
2+21.18	Tangent Data	12489.44148	11710.80127
3+72.23	Tangent Data	12625.57552	11981.22130

STATE OF MISSOURI
RONALD I. UNERSTALL
 NUMBER E-22280
 LICENSED PROFESSIONAL ENGINEER
 WASHINGTON ENGINEERING & ARCHITECTURE
 GARY TERSCHEUR, P.E.
 RON UNERSTALL



LEGEND

- AI AREA INLET
- DAI DOUBLE AREA INLET
- CI CURB INLET
- DCI DOUBLE CURB INLET
- MH MANHOLE
- OS OVERFLOW STRUCTURE
- FL FLOWLINE
- RCP REINFORCED CONCRETE PIPE
- WATER SHUT-OFF VALVE
- FIRE HYDRANT
- SB SANITARY SEWER STRUCTURE LABEL
- SB STORM SEWER STRUCTURE LABEL
- HOUSE ADDRESS



GREAT WARRIOR MEADOWS O'FALLON, MISSOURI

WASHINGTON ENGINEERING & ARCH