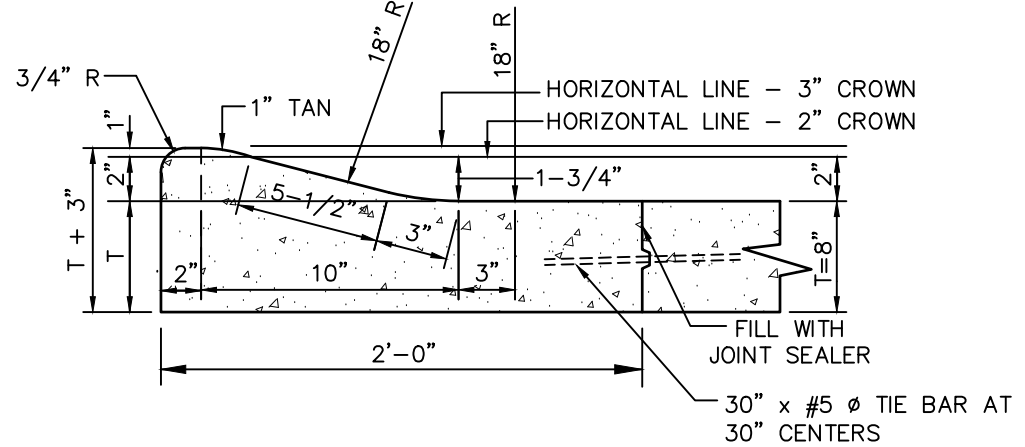
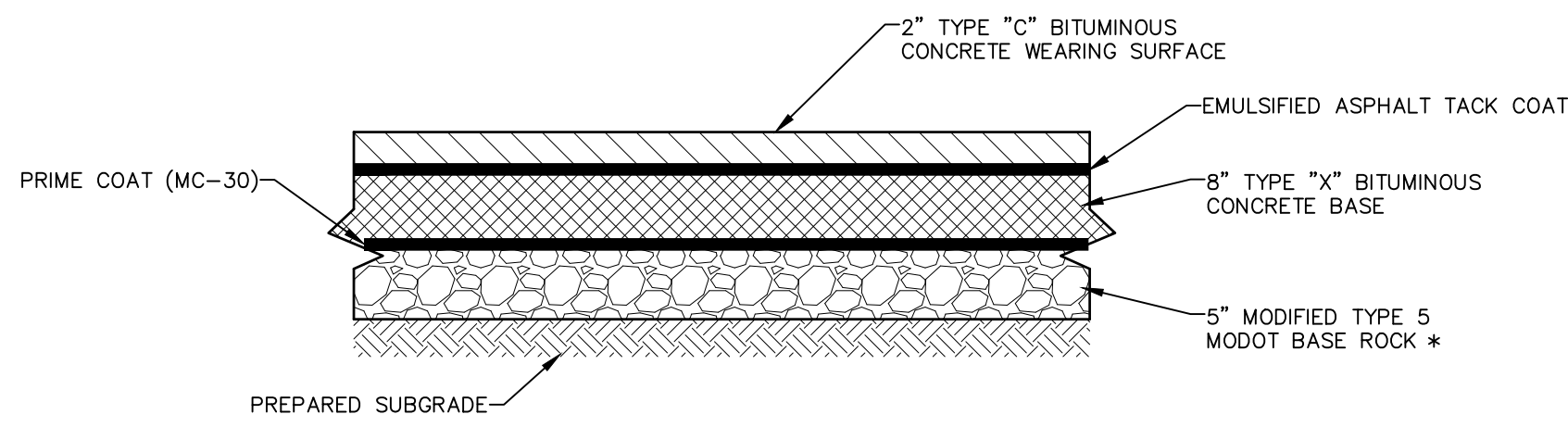


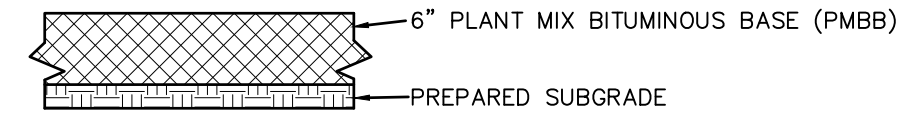
GRAVEL DRIVEWAY DETAIL
NOT TO SCALE



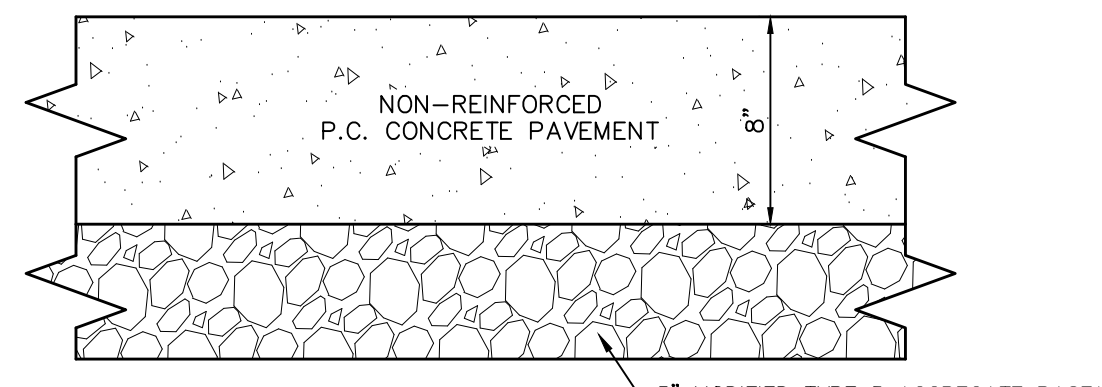
ROLLED CURB PAVEMENT DETAILS
NOT TO SCALE



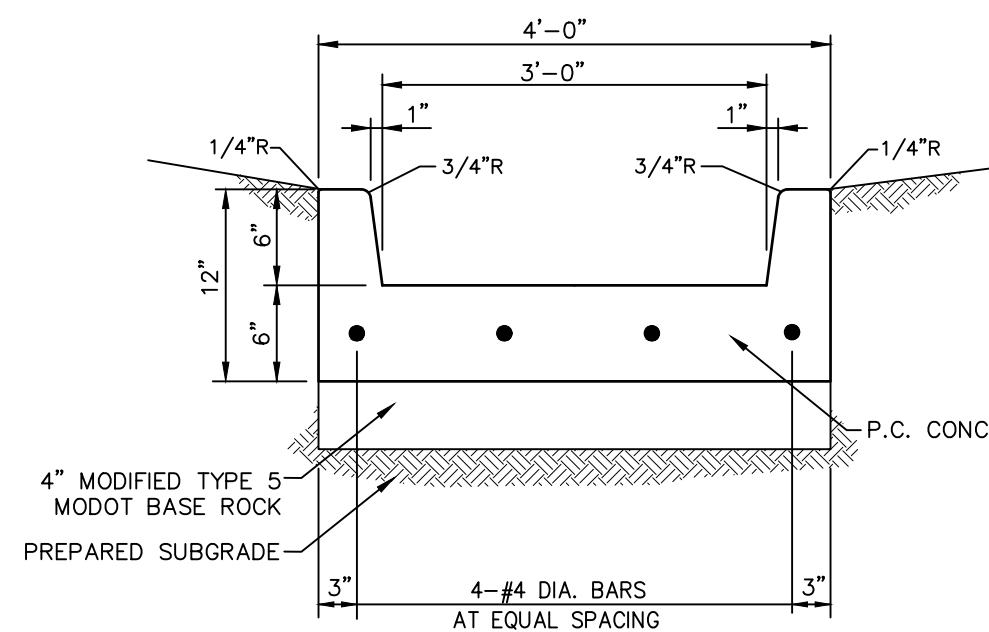
ASPHALT TRANSITION DETAIL
NTS



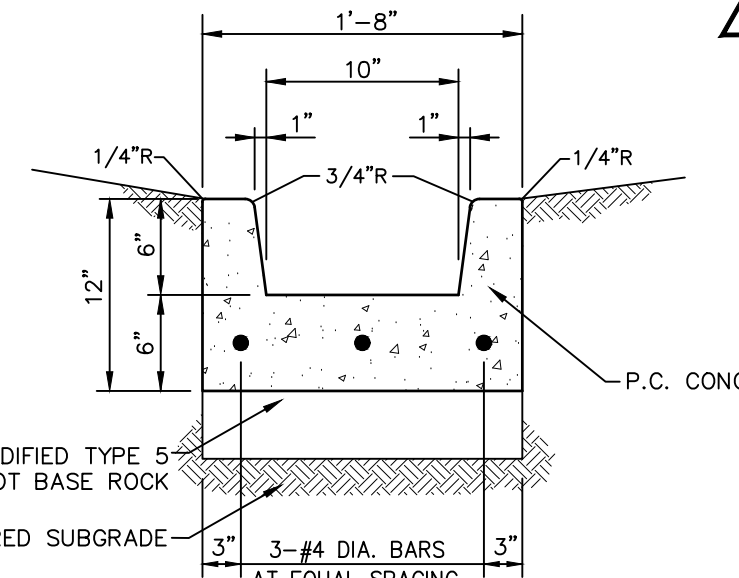
TEMPORARY PAVEMENT DETAIL
NOT TO SCALE



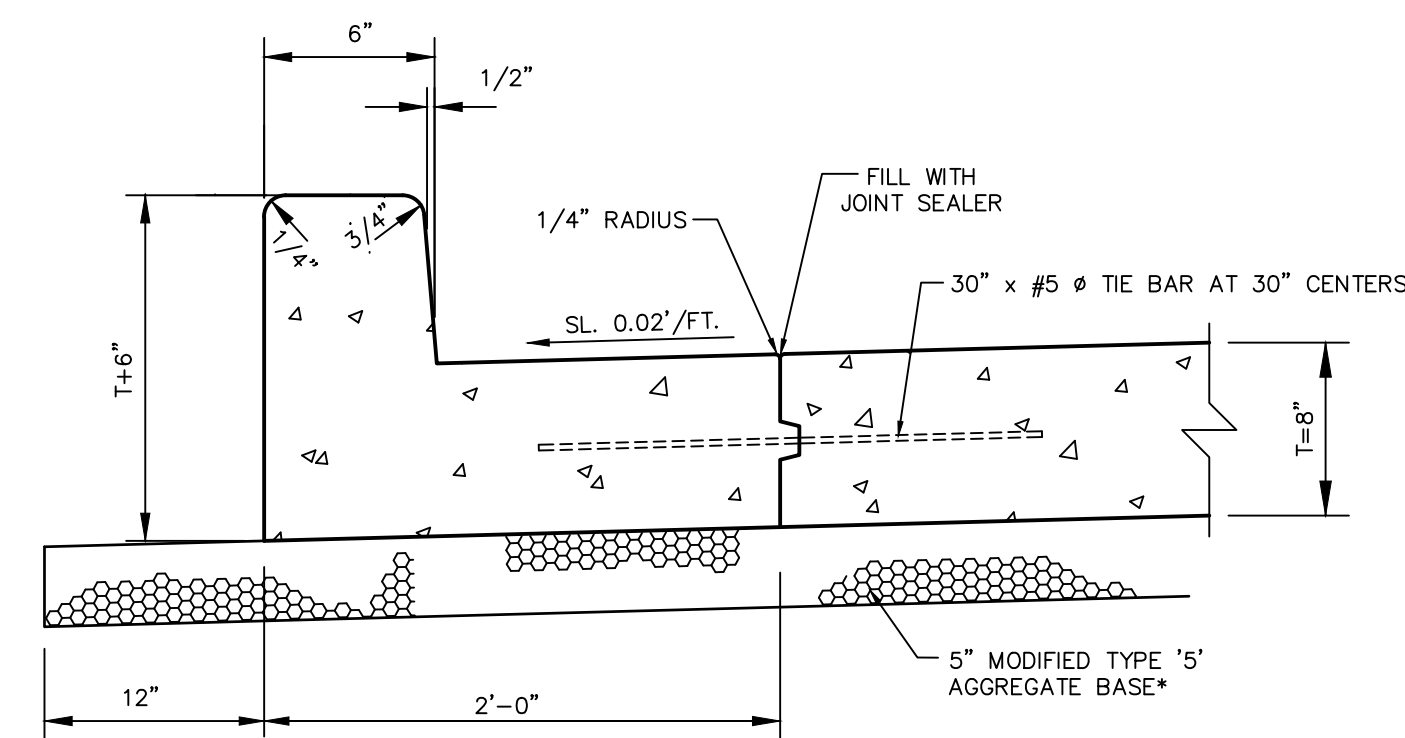
CONCRETE APPROACH DETAIL
NOT TO SCALE



3' W. CONCRETE SWALE
NOT TO SCALE



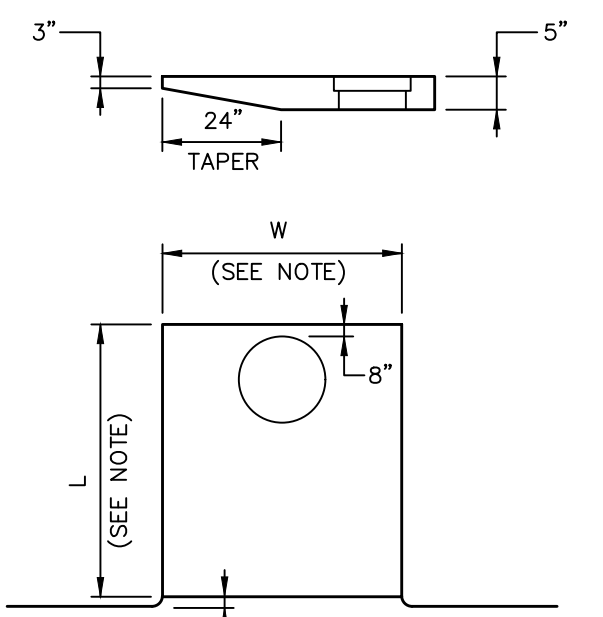
TYPE "B" CONCRETE GUTTER
NOT TO SCALE



6" VERTICAL CONC. CURB & GUTTER
NOT TO SCALE

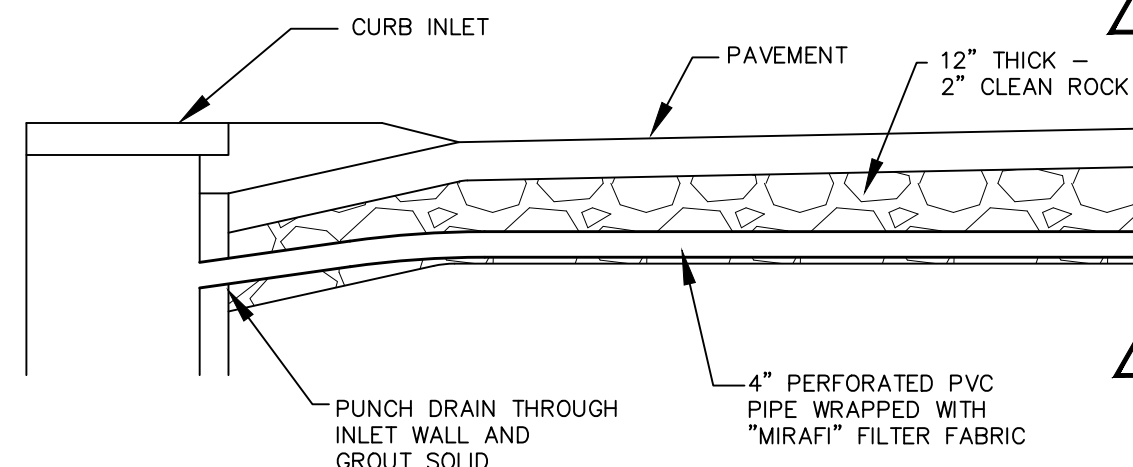
SUPER ELEVATION TABLE

STATION	DESCRIPTION	CENTERLINE ELEVATION	LEFT SIDE GRADE	RIGHT SIDE GRADE
36+32.10	TRANSITION(A-A)	497.19	-2.00	-2.00
36+50.00	TRANSITION	497.87	-2.00	-1.06
36+72.10	TRANSITION(B-B)	498.71	-2.00	0.00
36+75.00	TRANSITION	498.82	-2.00	+0.15
37+00.00	TRANSITION	499.74	-2.00	+1.40
37+12.10	TRANSITION(C-C)	500.16	-2.00	+2.00
37+25.00	TRANSITION	500.59	-2.25	+2.23
37+50.00	TRANSITION	501.35	-2.69	+2.69
37+72.10	TRANSITION(P.C.)	501.96	-3.09	+3.09
37+75.00	TRANSITION	502.04	-3.14	+3.14
38+00.00	TRANSITION	502.64	-3.60	+3.60
38+22.10	FULL SUPER(D-D)	503.11	-4.00	+4.00
38+25.00	FULL SUPER	503.17	-4.00	+4.00
38+50.00	FULL SUPER	503.62	-4.00	+4.00
38+75.00	FULL SUPER	504.00	-4.00	+4.00
39+00.00	FULL SUPER	504.29	-4.00	+4.00
39+25.00	FULL SUPER	504.51	-4.00	+4.00
39+50.00	FULL SUPER	504.65	-4.00	+4.00
39+75.00	FULL SUPER	504.71	-4.00	+4.00
40+00.00	FULL SUPER	504.69	-4.00	+4.00
40+25.00	FULL SUPER	504.60	-4.00	+4.00
40+50.00	FULL SUPER	504.42	-4.00	+4.00
40+75.00	FULL SUPER	504.17	-4.00	+4.00
41+00.00	FULL SUPER	503.84	-4.00	+4.00
41+25.00	FULL SUPER	503.43	-4.00	+4.00
41+50.00	FULL SUPER	502.95	-4.00	+4.00
41+75.00	FULL SUPER	502.39	-4.00	+4.00
42+00.00	FULL SUPER	501.74	-4.00	+4.00
42+18.19	FULL SUPER(D-D)	501.23	-4.00	+4.00
42+25.00	TRANSITION	501.03	-3.88	+3.88
42+50.00	TRANSITION	500.30	-3.42	+3.42
42+68.19	TRANSITION(P.T.)	499.77	-3.09	+3.09
42+75.00	TRANSITION	499.57	-2.97	+2.97
43+00.00	TRANSITION	498.84	-2.51	+2.51
43+25.00	TRANSITION	498.19	-2.06	+2.06
43+28.19	TRANSITION(C-C)	498.11	-2.00	+2.00
43+50.00	TRANSITION	497.63	-2.00	+0.91
43+68.19	TRANSITION(B-B)	497.27	-2.00	0.00
43+75.00	TRANSITION	497.15	-2.00	-0.34
44+00.00	TRANSITION	496.77	-2.00	-1.59
44+08.19	TRANSITION(A-A)	496.66	-2.00	-2.00



OVERSIZED INLET TOP (PRECAST) DETAIL
NTS

NOTE:
CURB INLET: L=72" W=54"
DOUBLE CURB INLET: L=72" W=108"



PAVEMENT UNDERDRAIN
NO SCALE

SUMMARY OF QUANTITIES

SHEET NUMBER						TOTAL	UNITS	ITEM	ROADWAY ITEMS
4	5	6	7	8	9				
1.0	2.2	1.2	1.1	1.0	0.8	7.3	AC.	1	CLEARING & GRUBBING
-	-	-	-	-	-	-	L.S.	2	REMOVAL OF EXISTING IMPROVEMENTS (INCLUDES PAVEMENT)
-	-	-	-	-	-	38,698	C.Y.	3	UNCLASSIFIED EXCAVATION
-	-	-	-	-	-	7,000	C.Y.	4	CLASS C ROCK EXCAVATION - INCLUDES HAUL OFF
-	-	-	-	-	-	10,077	C.Y.	5	EMBANKMENT (W/ 15% SHRINKAGE)
-	-	-	-	-	-	26,621	C.Y.	6	HAUL OFF SOILS MATERIAL
-	-	-	-	-	-	1,500	S.Y.	7	UNSATURABLE SUBGRADE (INCLUDES HAUL OFF)
-	-	-	-	-	-	223	S.Y.	8	EXPANSIVE CLAY REMEDIATION AT BOX CULVERT AND HEADWALLS (INCLUDES HAUL OFF)
-	-	-	-	-	-	904	S.Y.	9	2" TYPE "C" BITUMINOUS CONCRETE WEARING SURFACE (ASPH. TRANSITION)
-	-	-	-	-	-	922	S.Y.	10	2" TYPE "X" BITUMINOUS CONCRETE BASE (ASPH. TRANSITION)
361	-	-	-	-	-	380	S.Y.	11	8" THICK CONC. APPROACH PAVEMENT W/ INTEGRAL CONC. CURB & JOINTS
1228	1932	1524	1376	1430	995	8,485	S.Y.	12	8" THICK CONC. PAVEMENT (WITH 15% JOINTS)
-	-	-	-	-	-	322	S.Y.	13	8" THICK CONC. DRIVEWAY APPROACH PAVEMENT W/ INTEGRAL CONC. CURB & JOINTS
-	-	-	-	-	-	48	S.Y.	14	GRAVEL DRIVEWAY
769	1182	1010	1026	1063	491	5,541	L.F.	15	2" WIDE VERTICAL CONC. CURB & GUTTER
-	90	-	-	-	-	90	L.F.	16	2" WIDE ROLLED CONC. CURB & GUTTER
-	-	-	276	-	-	276	L.F.	17	TYPE B CONC. GUTTER
12	-	-	-	-	-	12	L.F.	18	3' WIDE CONC. SWALE
473	677	510	501	476	200	2,837	S.Y.	19	4" MODIFIED TYPE 5 MODOT BASE ROCK (UNDER WALK, TYPE B GUTTER & SWALE)
1171	2273	1532	1402	1477	2220	12,250	S.Y.	20	5" MODIFIED TYPE 5 MODOT BASE ROCK
-	-	2	1	1	2	6	EA.	21	REMOVE AND RELOCATE MAIL BOX
69	35	-	-	20	114	228	L.F.	22	SAWCUT PAVEMENT (FULL/PARTIAL CONC. OR ASPH.)
-	-	-	-	36	-	36	S.Y.	23	3" TYPE "C" ASPHALT OVER 8" TYPE 5 AGGREGATE BASE (PRIVATE DRIVEWAYS)
-	-	-	1	1	-	2	EA.	24	STORM MANHOLE (PRECAST)
-	-	-	1	3	-	4	EA.	25	AREA INLET (PRECAST)
-	-	2	3	2	-	7	EA.	26	CURB INLET (PRECAST)
-	-	1	1	-	-	2	EA.	27	CURB INLET-WITH OVERSIZED LID (PRECAST)
-	-	1	1	-	-	2	EA.	28	DOUBLE CURB INLET (PRECAST)
-	-	-	-	-	-	2	EA.	29	DOUBLE CURB INLET-WITH OVERSIZED LID (PRECAST)
-	-	1	-	-	-	1	L.S.	30	PRECAST JUNCTION BOX W/ AREA INLET TOP
-	-	1	-	-	-	1	EA.	31	STRUCTURE FOR LARGE PIPE CONNECTION W/ RISER AND AI TOP (AI 100)
-	-	-	40	-	-	40	L.F.	32	4" PERFORATED UNDERDRAIN (IN PLACE)
-	30	292	102	-	119	563	L.F.	33	15" RCP-CLASS III (IN PLACE)
-	-	-	30	-	-	30	L.F.	34	15" RCP-CLASS IV (IN PLACE)
-	-	362	460	-	-	822	L.F.	35	27" RCP-CLASS III (IN PLACE)
-	-	-	20	-	-	20	L.F.	36	36" RCP-CLASS III (IN PLACE)
-	-	10	-	-	-	10	L.F.	37	78" RCP-CLASS III (IN PLACE)
-	-	2	2	-	-	4	EA.	38	15" CONC. FLARED END (IN PLACE)
-	-	2	-	-	-	2	EA.	39	36" CONC. FLARED END (IN PLACE)
-	-	50	-	-	-	50	L.F.	40	5h. x 10' w. PRECAST CONCRETE BOX CULVERT
-	-	55	-	-	-	55	L.F.	41	5h. x 10' w. PRECAST CONCRETE ANGLE SECTIONS (6 TOTAL)
-	-	266	-	-	-	266	S.F.	42	HEADWALL AT BOX CULVERT
-	201	-	-	-	-	201	L.F.	43	8" PVC SANITARY SEWER W/ CAP (IN PLACE)
-	1	-	-	-	-	1	EA.	44	PRECAST SANITARY MANHOLE W/ 48" DIA. BASE (IN PLACE)
-	1	-	-	-	-	1	EA.	45	BREAK INTO EXISTING MANHOLE & RESHAPE INVERT
-	-	39	30	-	51	120	S.Y.	46	FURNISHING & PLACING MSD TYPE 5 ROCK BLANKET W/ FABRIC (MAX SIZE 18")
-	-	450	-	-	-	450	S.Y.	47	FURNISHING & PLACING MSD TYPE 8 HEAVY STONE REVETMENT W/ FABRIC (MAX SIZE 18")
-	-	-	-	-	-	1	L.S.	48	MOBILIZATION
-	1	-	-	-	-	1	EA.	49	REMOVE & RELOCATE LIGHT STANDARD
-	-	1	-	-	-	1	L.S.	50	EXISTING 30" STORM SEWER TO BE ABANDONED
-	-	-	1427	-	341	1,768	S.F.	51	MODULAR BLOCK RETAINING WALL
-	-	-	272	-	91	363	L.F.	52	48" CHAIN LINK FENCE W/ BLACK VINYL COATING (AT TOP OF RETAINING WALL)
-	-	-	48	-	-	48	L.F.	53	48" CHAIN LINK FENCE W/ BLACK VINYL COATING (AT TOP OF HEADWALL)
-	-	-	-	-	-	12,353	S.Y.	54	SOD
-	-	-	-	-	-	3.5	AC.	55	SEED & HYDROMULCH
-	-	-	-	-	-	1	L.S.	56	REMOVE & RELOCATE METAL GATES (PARCEL 9)
-	-	175	-	-	140	315	L.F.	57	TYPE A GUARD RAIL
-	-	1	-	-	-	1	EA.	58	CRASHWORTHY END TERMINAL
-	-	287	233	196	-	799	S.Y.	59	CLASS 2 FLEXIBLE CHANNEL LINER (TYPE G)
-	-	-	-	-	-	9035	S.Y.	60	EROSION CONTROL BLANKET (NORTH AMERICAN GREEN S75)
-	-	1	-	-	-	1	L.S.	61	LANDSCAPE RESTORATION AT ENTRANCE MONUMENT (PARCEL 16)
-	-	-	-	-	-	2,072	L.F.	62	SILT FENCE (SEE SHEET 42-43 FOR QUANTITIES)
-	-	-	-	-	-	40	EA.	63	DITCH CHECK (SEE SHEET 42-43 FOR QUANTITIES)
-	-	-	-	-	-	13	EA.	64	DITCH CHECK WITH SEDIMENT TRAP (SEE SHEET 42-43 FOR QUANTITIES)
-	-	-	-	-	-	129	L.F.	65	CURB INLET PROTECTION (SEE SHEET 42-43 FOR QUANTITIES)
-	-	-	-	-	-	6	EA.	66	AREA INLET PROTECTION (SEE SHEET 42-43 FOR QUANTITIES)
-	-	-	-	-	-	1	L.S.	67	TRAFFIC CONTROL (DETOUR SIGNAGE, BARRICADES, CHANNELIZERS)
-	-	-	-	-	-	1	L.S.	68	RESET MISC. SURVEY CORNERS BY A REGISTERED LAND SURVEYOR (AS AUTHORIZED)
-	-	-	-	-	-	1	L.S.	69	CONSTRUCTION MATERIALS TESTING
-	-	-	-	-	-	1	L.S.	70	CONTRACTOR SURVEYING AND STAKING
-	-	-	-	-	-	1	L.S.	71	CONSTRUCTION ASBUILT PLANS AS REQ. BY CITY OF O'FALLON SPECIFICATIONS
-	-	-	-	-	-	300	C.Y.	72	TRENCH ROCK EXCAVATION
-	-	-	-	-	-	1	L.S.	73	SWPPP
7	39	-	-	-	44	97	S.Y.	74	CONCRETE CURB RAMPS & LANDINGS - 7" THICK (PER ADA)
-	-	-	-	-	-	44	S.F.	75	TRUNCATED DOMES
440	624	448	487	462	140	2,652	S.Y.	76	4" THICK CONC. SIDEWALK
107	137	90	-	-	643	977	L.F.	77	4" SOLID WHITE - ACRYLIC WATERBORNE PAVEMENT MARKING PAINT
1080	1552	1602	1100	1260	1163	7,837	L.F.	78	4" YELLOW - ACRYLIC WATERBORNE PAVEMENT MARKING PAINT
-	94	-	-	-	120	214	L.F.	79	6" WHITE - ACRYLIC WATERBORNE PAVEMENT MARKING PAINT (FOR CROSSWALK)
-	12	-	-	-	12	24	L.F.	80	24" WHITE - ACRYLIC WATERBORNE PAVEMENT MARKING PAINT (FOR STOP BARS)
2	3	1	-	1	3	10	EA.	81	WHITE LEFT/RIGHT TURN ARROW - ACRYLIC WATERBORNE PAVMT MARKING PAINT
-	-	-	-	-	-	52	L.F.	82	EXISTING PAVEMENT MARKING REMOVAL
-	-	-	-	-	-	1	EA.	83	RELOCATED LIGHT STANDARD
-	-	-	-	-	-	2	EA.	84	CHANGEABLE MESSAGE SIGN (CONTRACTOR FURNISHED & RETAINED)
-	-	-	-	-	-	2	EA.	85	PROJECT INFORMATION SIGNS
-	-	-	-	-	-	5	EA.	86	STANDARD SIGN ASSEMBLY

NOTES:

- UTILITY RELOCATIONS (GAS, ELECTRIC, TELEPHONE, CABLE TV) AND EASEMENT ACQUISITIONS NOT INCLUDED IN ABOVE QUANTITIES.
- COMPACTION OF SOILS SHALL BE INCIDENTAL TO EARTHWORK.
- TEMPORARY SEEDING WHERE REQUIRED SHALL BE INCIDENTAL TO THE PROJECT.
- ALL WORK OUTSIDE OF THAT SHOWN ON THE PLANS SHALL BE INCIDENTAL TO THE PROJECT.
- SIGN ASSEMBLY SHALL INCLUDE POST, BASE, SIGNS AND ALL HARDWARE.
- NORTH AMERICAN GREEN S75 EROSION CONTROL BLANKET SHALL BE INSTALLED ON THE 3:1 SLOPED BANK FROM THE TOE TO THE TOP OF BANK. STA 34+18 TO STA 43+86, LT.

* PER CITY OF O'FALLON REQUIREMENTS, ALL ROCK BASE UNDER PAVEMENTS AND SIDEWALKS SHALL BE "MODIFIED TYPE 5 MODOT BASE ROCK." MODIFIED TYPE 5 MODOT BASE ROCK SHALL MEET REQUIREMENTS THAT FINES (PASSING NO. 200 SIEVE) SHALL BE RESTRICTED TO NO MORE THAN 10%.

SODDING AND SEEDING AND HYDROMULCH SCHEDULE

STA	TO STA	LEFT (WEST) SIDE		RIGHT (EAST) SIDE	
		SOD	SEED & HYDROMULCH	SOD	SEED & HYDROMULCH
34+15.15 (PROJECT START)	38+50.00	5' WIDE STRIP BEHIND BACK OF CURB	ALL AREAS BEHIND SOD	SOD ALL AREAS	N/A
38+50.00	42+25.00	5' WIDE STRIP BEHIND BACK OF CURB	ALL AREAS BEHIND SOD	2' WIDE STRIP BEHIND SIDEWALK	ALL AREAS BEHIND SOD
42+25.00	54+50.00	5' WIDE STRIP BEHIND BACK OF CURB	ALL AREAS BEHIND SOD	SOD ALL AREAS	N/A
54+50.00	56+50.00	5' WIDE STRIP BEHIND BACK OF CURB	ALL AREAS BEHIND SOD	SOD ALL AREAS	N/A
56+50.00	63+94.63 (PROJECT END)	SOD ALL AREAS	N/A	SOD ALL AREAS	N/A

BAX ENGINEERING CO., INC.
221 Point West Blvd.
St. Charles, MO 63301
Phone: 636-928-5552
Fax: 636-928-1718

GUTHRIE ROAD IMPROVEMENTS
BURNING BROOK DR. TO BLUFF BROOK DR.
O'FALLON, ST. CHARLES COUNTY, MO, 63366

CITY OF O'FALLON
100 N. MAIN STREET
O'FALLON, MO, 63366
636-240-2000

REVISIONS

DATE	DESCRIPTION
01/03/20	REVISED PER CITY COMMENTS
03/06/20	PRELIMINARY PLAN SUBMITTAL
01/12/23	PRE-FINAL PLAN SUBMITTAL
01/24/23	FINAL PLAN SUBMITTAL
01/26/23	FINAL PLANS - BID SET
03/14/23	ADDENDUM #1

DISCLAIMER OF RESPONSIBILITY
I hereby disclaim any responsibility for all other drawings, specifications, estimates, reports or other documents or instruments relating to or intended to be used for any part or parts of the architectural or engineering project or survey other than those authenticated by my seal.

SCOTT O. KOLKMEYER
Civil Engineer
MO 024744

SUMMARY & DETAILS
SHEET
2 OF 49