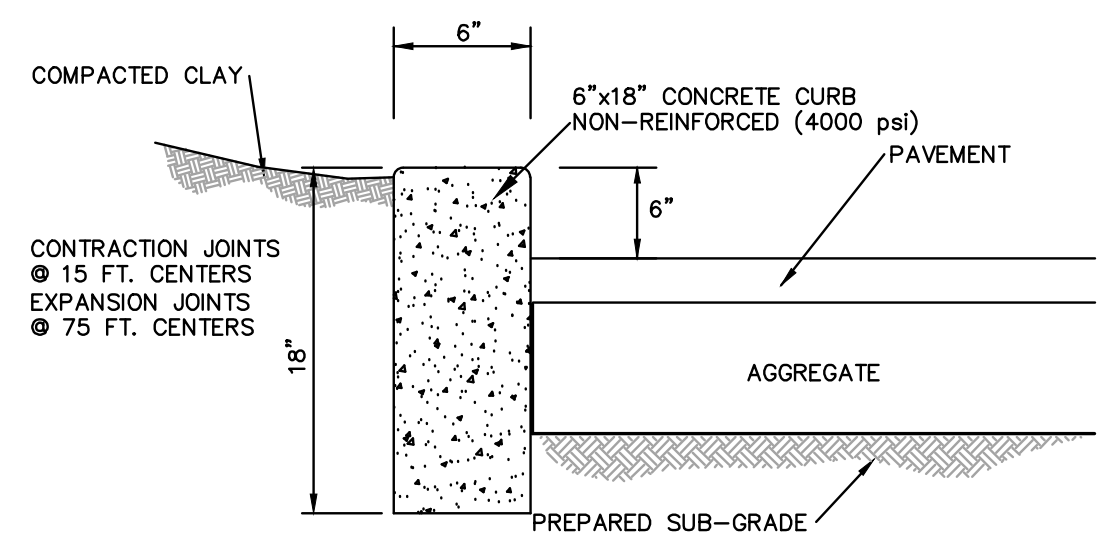
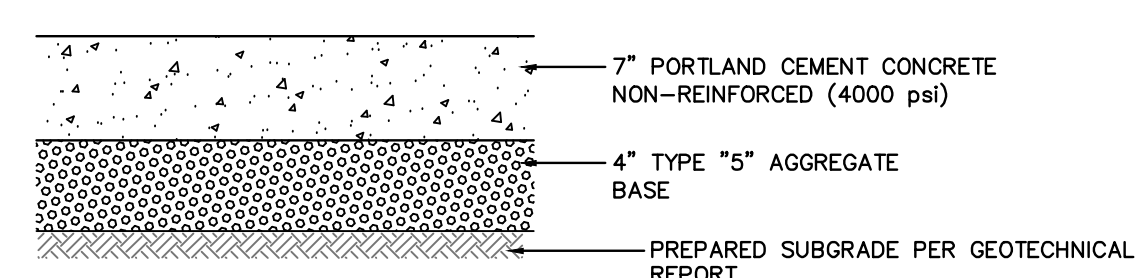


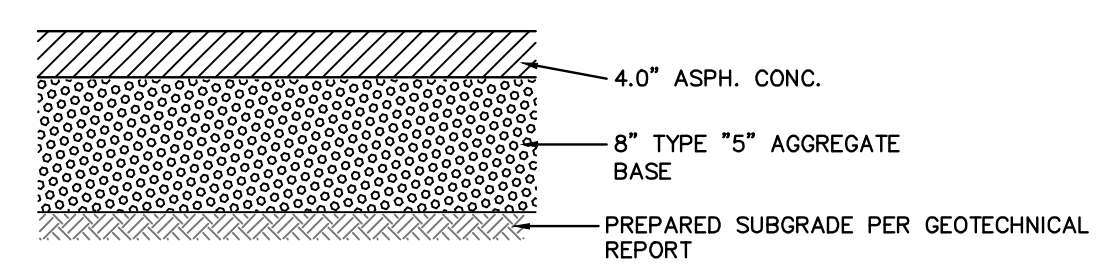
ROLLED CURB DETAIL
(n.t.s.)



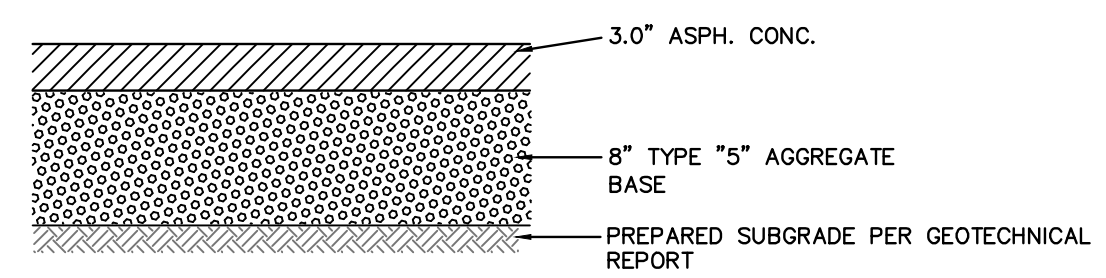
6" VERTICAL CONCRETE CURB DETAIL
(n.t.s.)
(AT LOCATIONS NOTED ON SHEET CX.0)
(NOT FOR USE IN CITY/MGDOT R/W)



CONCRETE PAVEMENT DETAIL
(TRASH ENCLOSURE)
(n.t.s.)

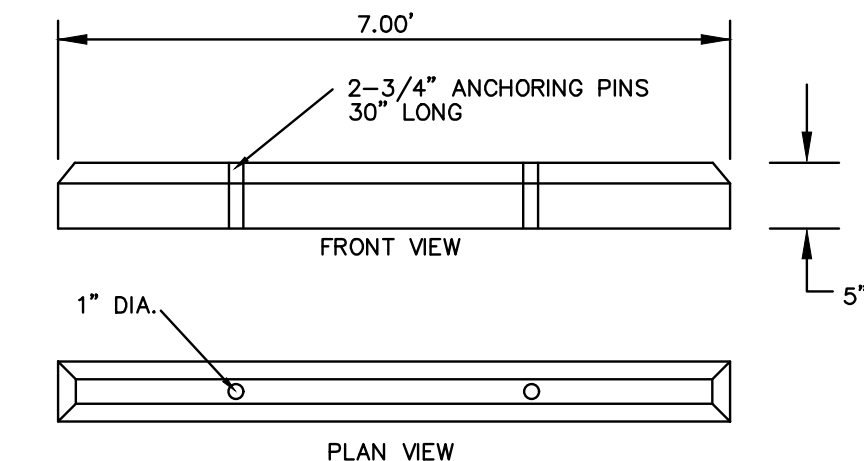


HEAVY DUTY ASPHALT PAVEMENT
(DRIVE LANES)
(n.t.s.)



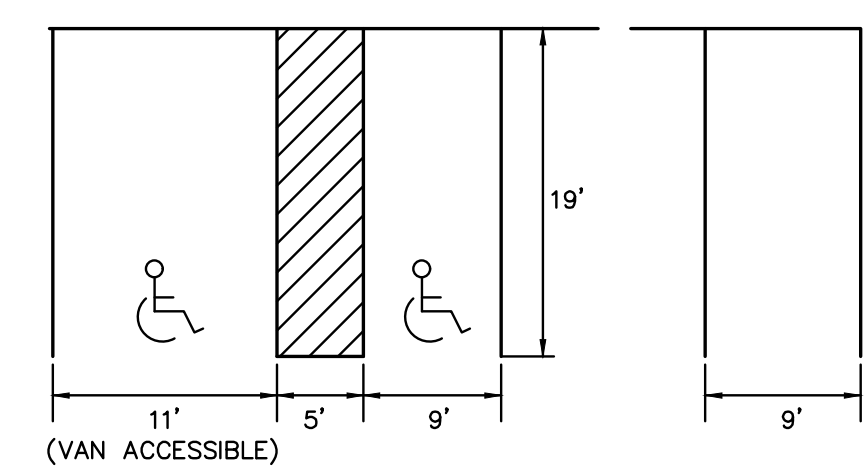
LIGHT DUTY ASPHALT PAVEMENT
(PARKING STALLS)
(n.t.s.)

- PAVEMENT NOTES:**
- ALL MEANS AND METHODS OF CONCRETE AND ASPHALTIC CONCRETE SHALL BE IN ACCORDANCE WITH CITY OF O'FALLON & ST. LOUIS COUNTY STANDARD SPECIFICATIONS FOR HIGHWAY CONSTRUCTION, CURRENT EDITION. IT IS THE CONTRACTOR'S RESPONSIBILITY TO OBTAIN CURRENT EDITIONS, PRIOR TO CONSTRUCTION.
 - PAVEMENT SECTIONS ARE SUBJECT TO GEOTECHNICAL ENGINEER AND OWNER REVIEW AND APPROVAL.
 - ALL NON-REINFORCED CONCRETE SHALL BE 4,000 P.S.I. AT 28 DAYS.
 - THE ASPHALT SURFACE SHALL BE COMPACTED TO 98% MAXIMUM DENSITY.

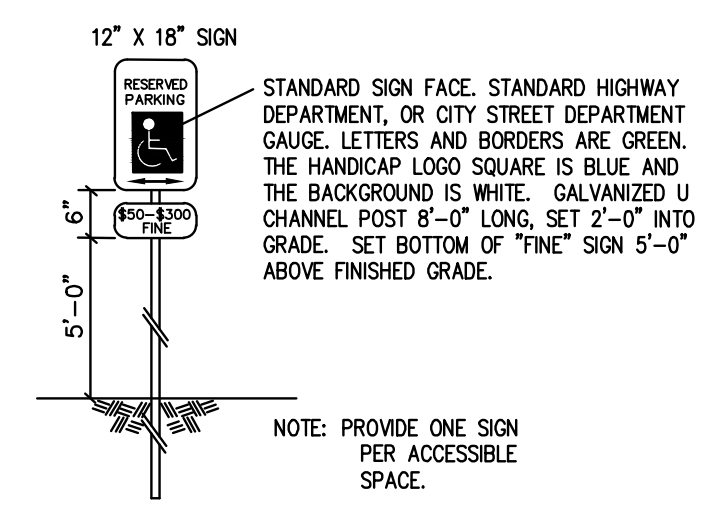


PRE-CAST PASS. VEHICLE WHEEL STOP
(n.t.s.)

4,000 psi. PRE-CAST, REINFORCED, AIR ENTRAINED CONCRETE. 12" H x 18" W x 9" L. CENTERED ON PARKING STALL. APPROXIMATE WEIGHT PER BUMPER IS 1,400 LBS. PROVIDE 1" CHAMFERED EDGES AND TWO DRAINAGE SLOTS SUITABLE FOR A FORKLIIFT TO ACCESS ON THE UNDERSIDE. PROVIDE MFG. STANDARD CONCRETE ANCHORS, OR #4 STEEL REINFORING ROD STAKES OF SUFFICIENT LENGTH TO PENETRATE THE ROCK BASE PLUS 4". TWO PER WHEEL STOP. CONCRETE ADHESIVE CAN BE USED AS TO ANCHOR THE WHEEL STOP TO THE PAVEMENT IN LIEU OF STEEL RODS PENETRATING THE PAVEMENT STRUCTURE. PAINT WHEEL STOP YELLOW.



TYPICAL PARKING STALLS
(VAN ACCESSIBLE)

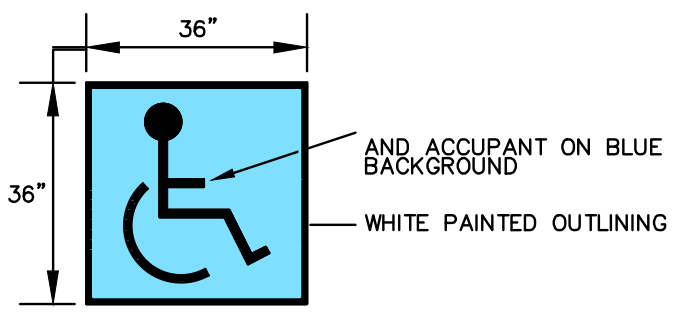


ACCESSIBLE PARKING SIGN
(n.t.s.)

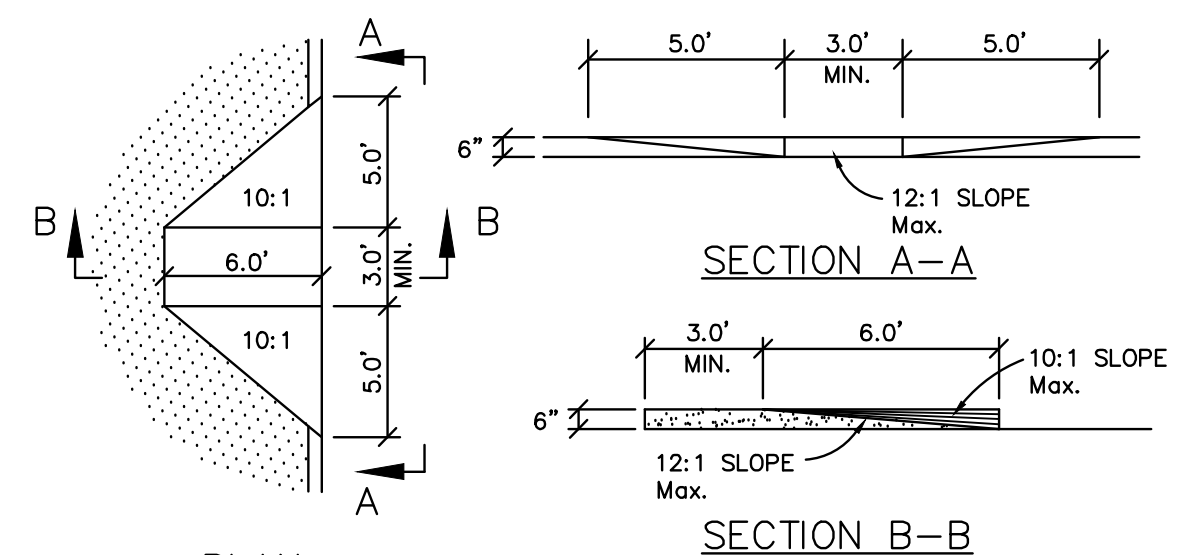


NOTE: THE SIGN MUST BE SUPPLEMENTED WITH A "VAN ACCESSIBLE" SIGN AS APPLICABLE.

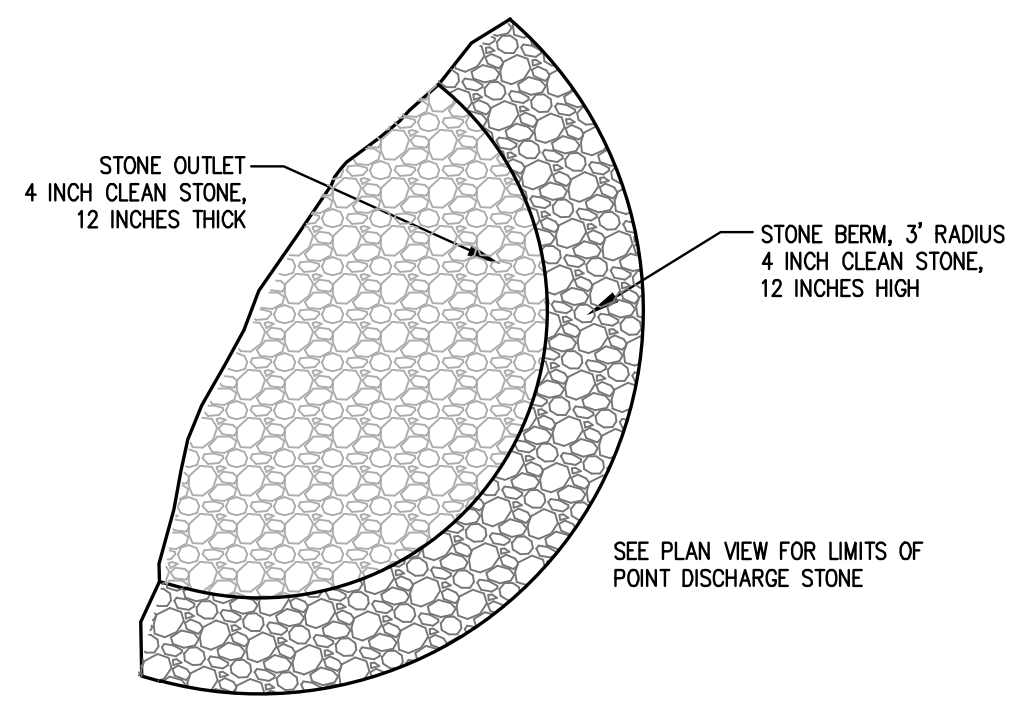
ACCESSIBLE SIGN DETAIL
(n.t.s.)



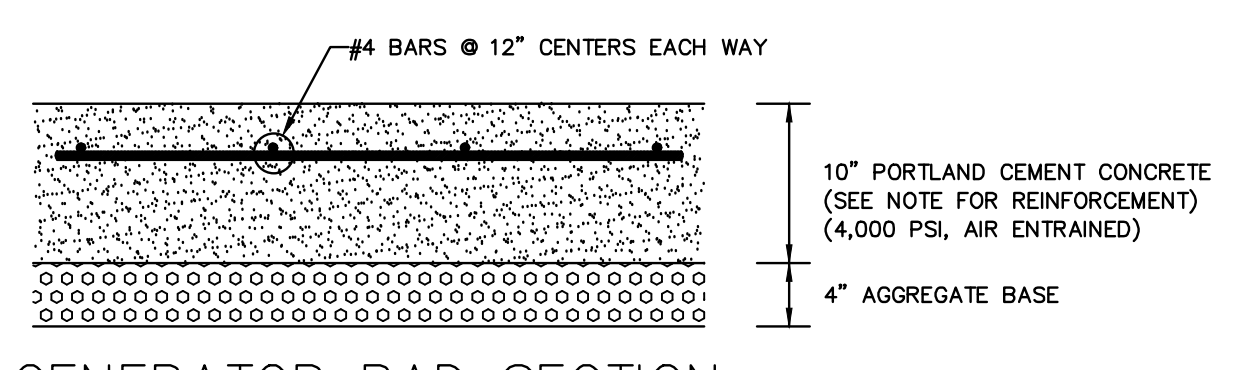
PAINTED ACCESSIBLE PARKING STALL SIGN
(n.t.s.)



HANDICAP RAMP DETAIL
(n.t.s.)

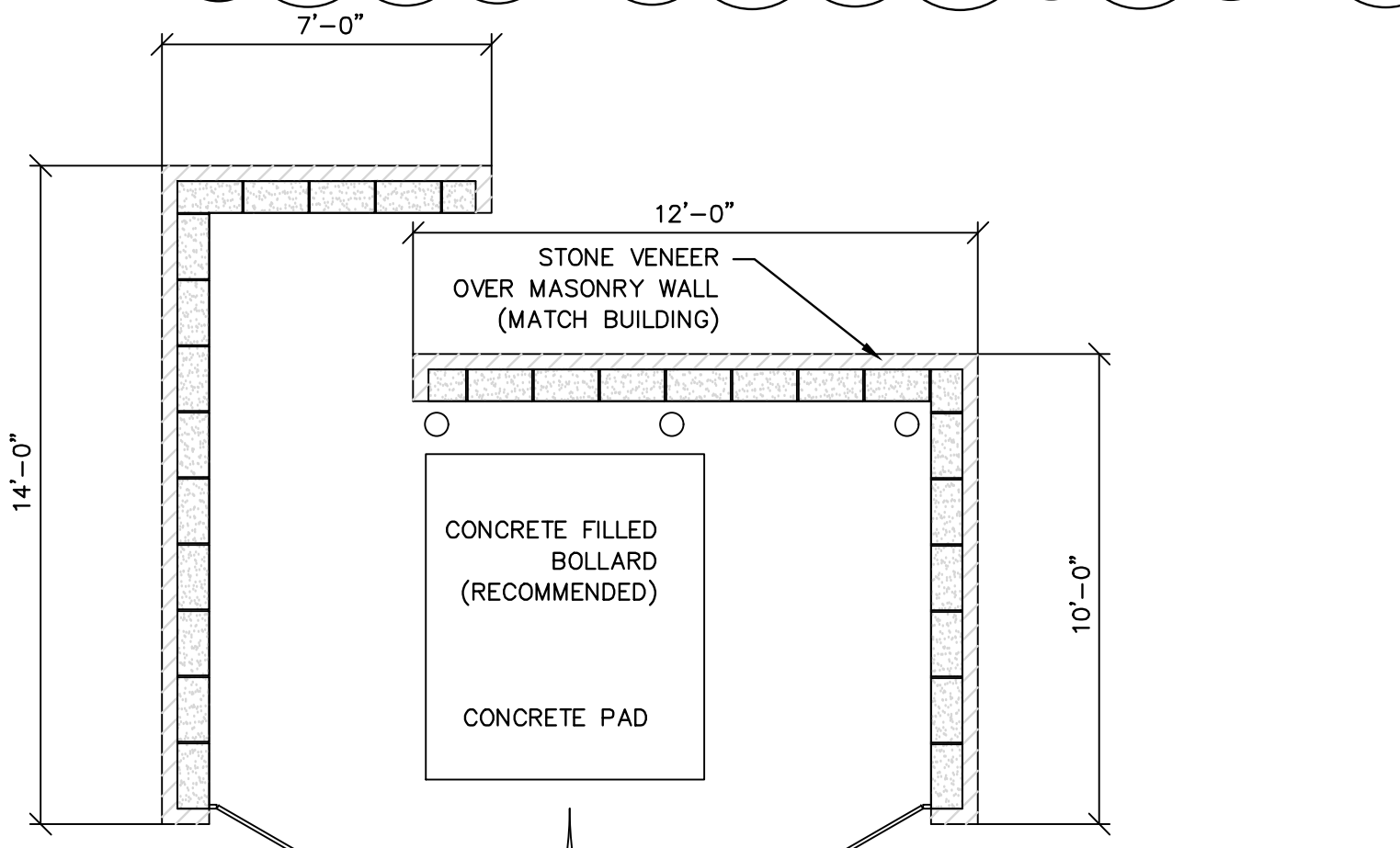


POINT DISCHARGE STONE
(n.t.s.)

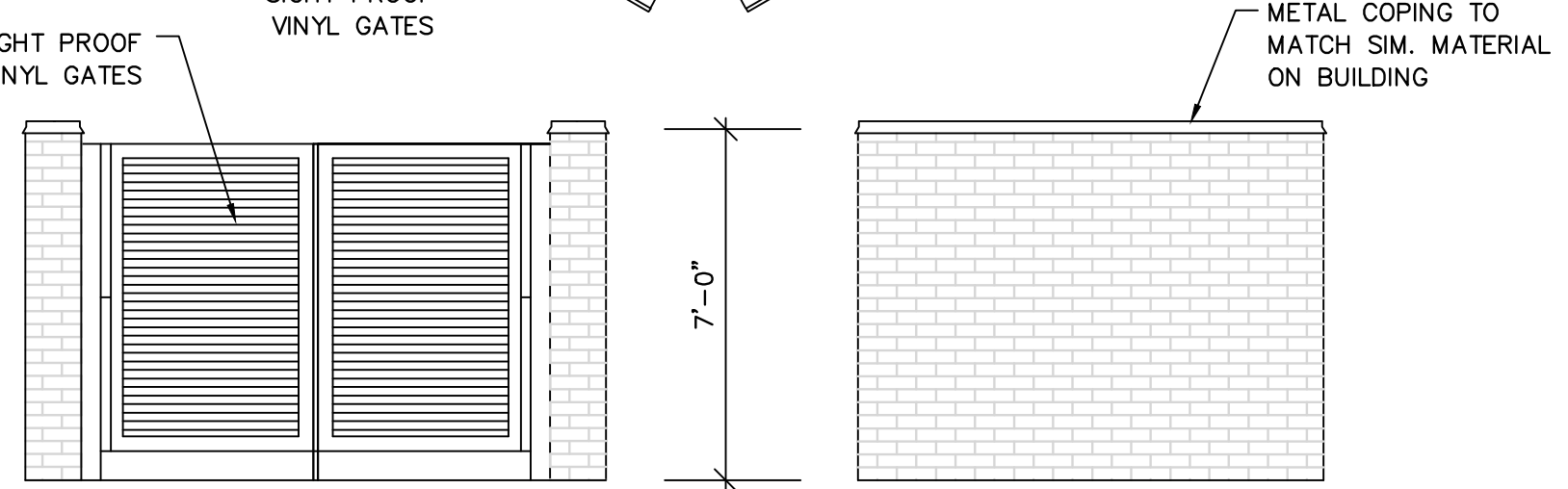


GENERATOR PAD SECTION
(n.t.s.)

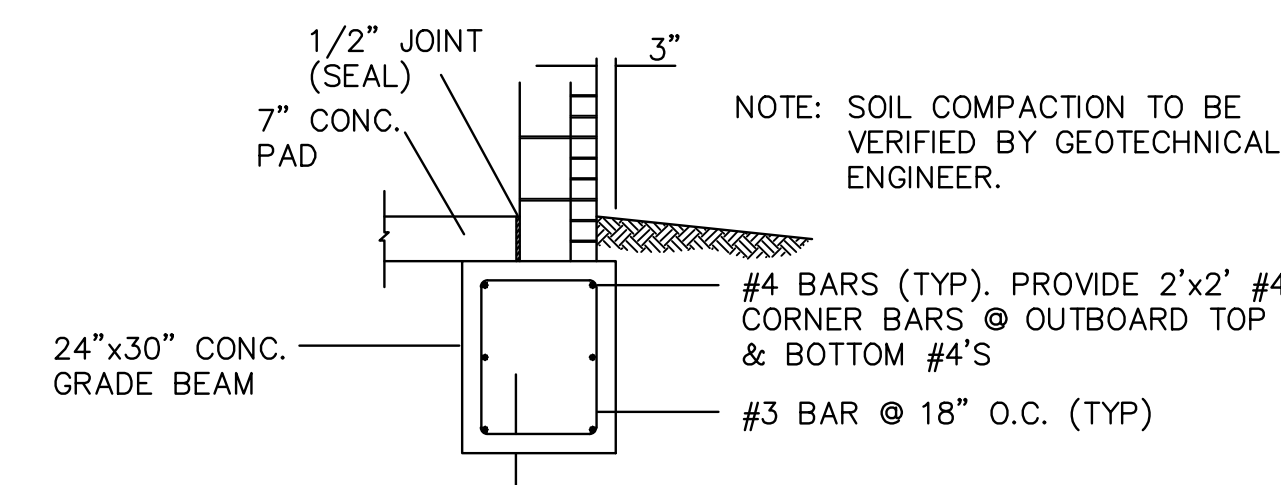
- CONCRETE GENERATOR PAD NOTES:**
- ANY UNSUITABLE SOIL (AS DETERMINED BY SOILS ENGINEER) BELOW STRUCTURE SHALL BE REMOVED AND REPLACED WITH SELECT EARTHEN MATERIAL COMPACTED IN PLACE WITH VIBRATORY TAMPER.
 - ALL EXPOSED CONCRETE EDGES TO HAVE 3/4" CHAMFER.
 - DIMENSIONS SHOWN ARE TO EDGE OF PAD.
 - GENERATOR PAD THICKNESS: 10 INCHES.
 - GENERATOR PAD REINFORCEMENT: #4 BARS AT 12" O.C.E.W.



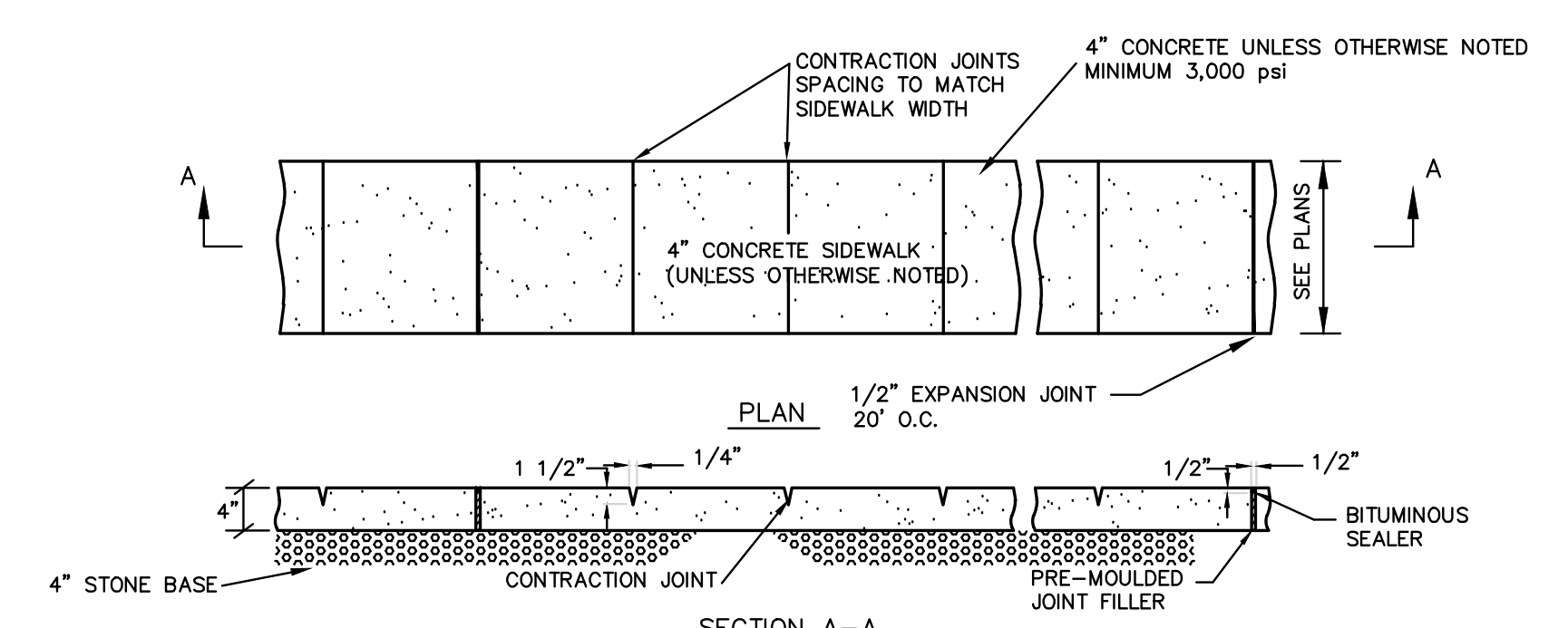
TRASH ENCLOSURE
(n.t.s.)



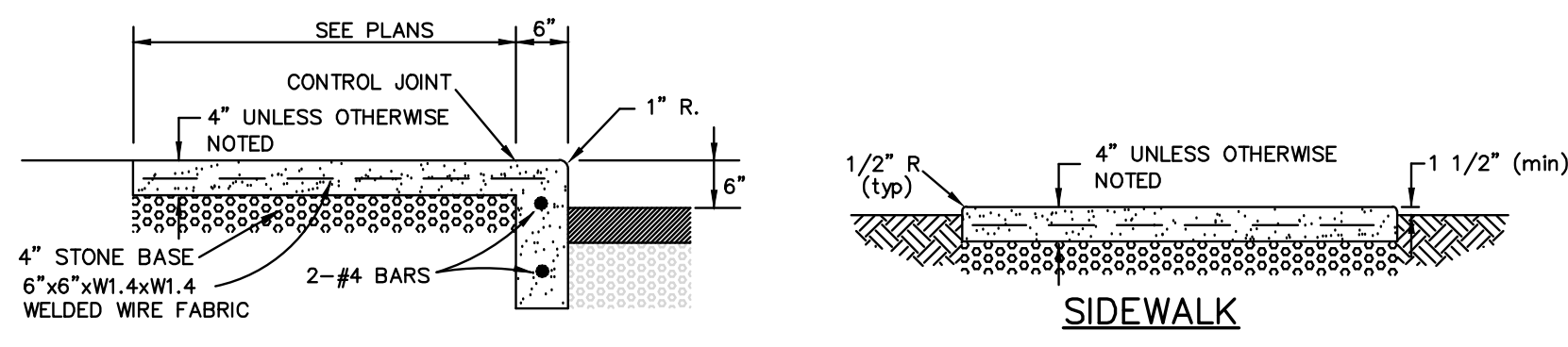
GRADE BEAM DETAIL
(n.t.s.)



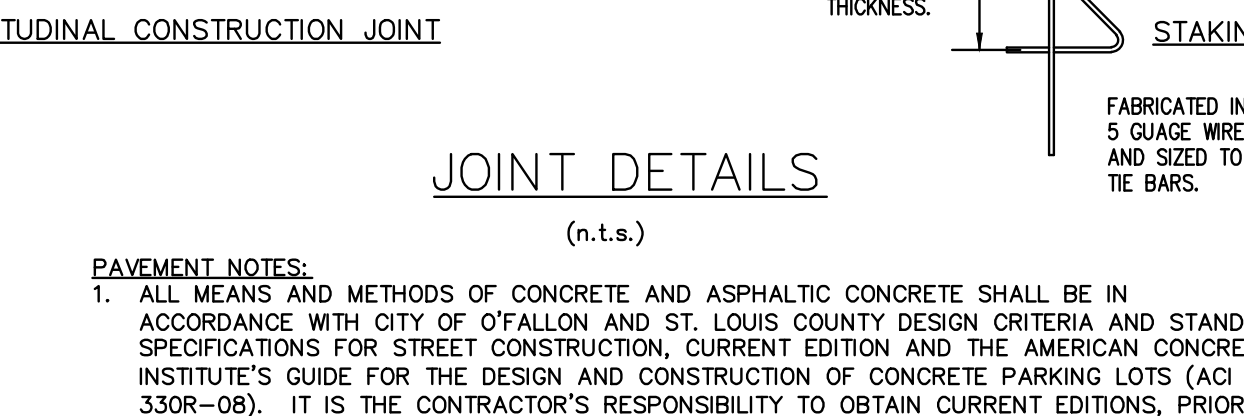
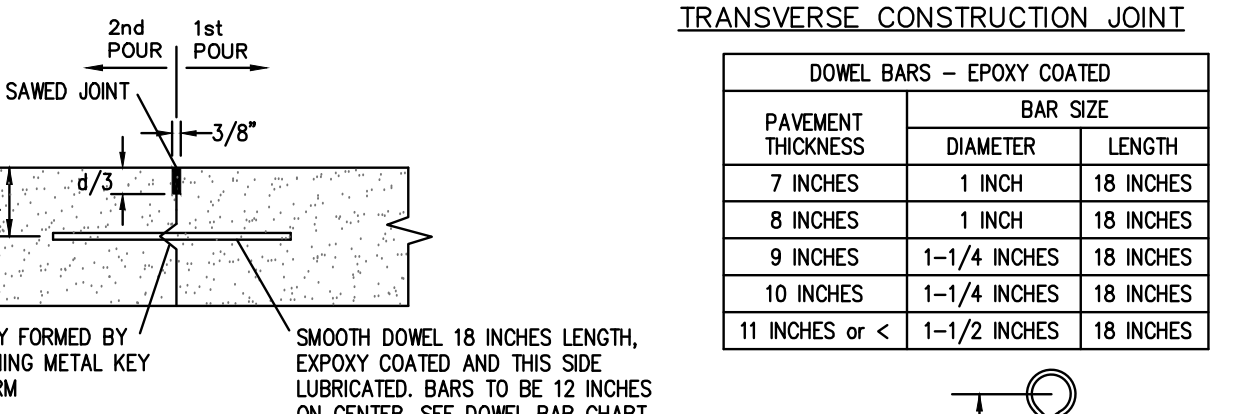
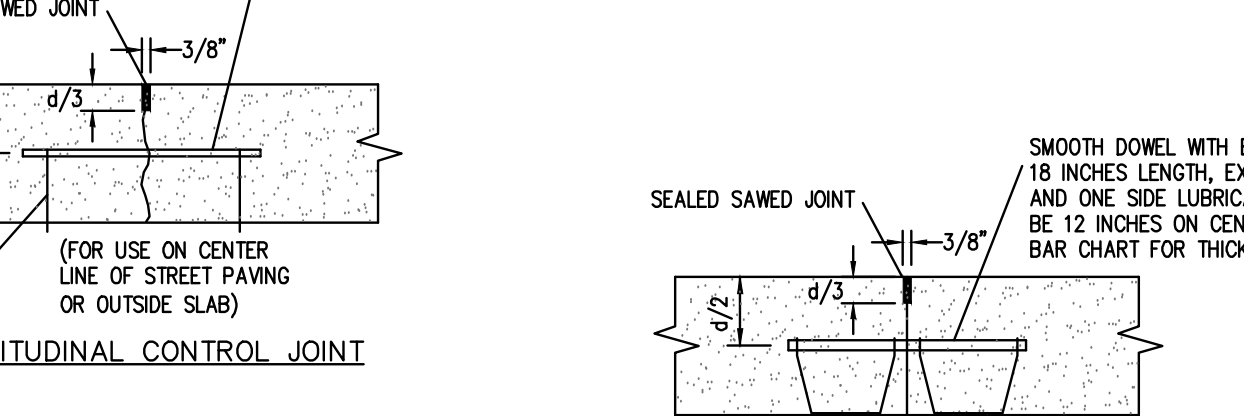
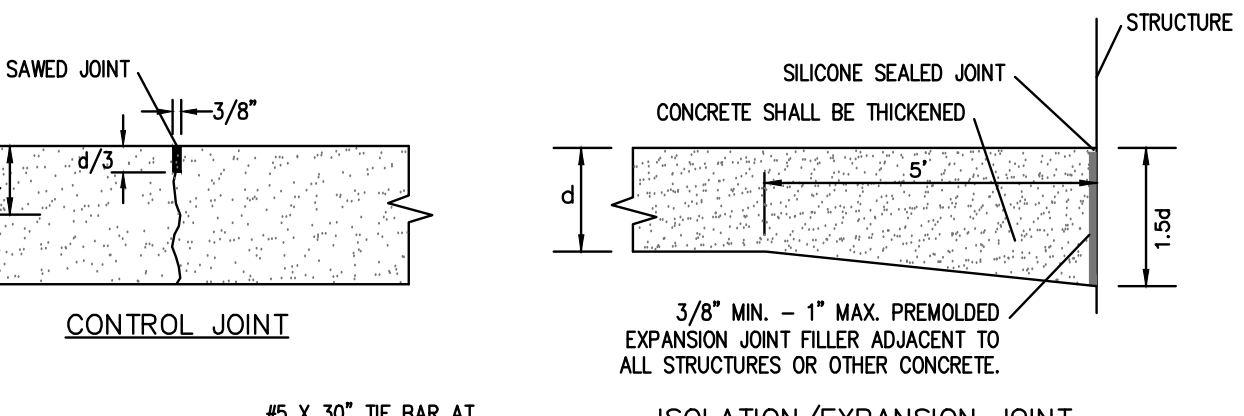
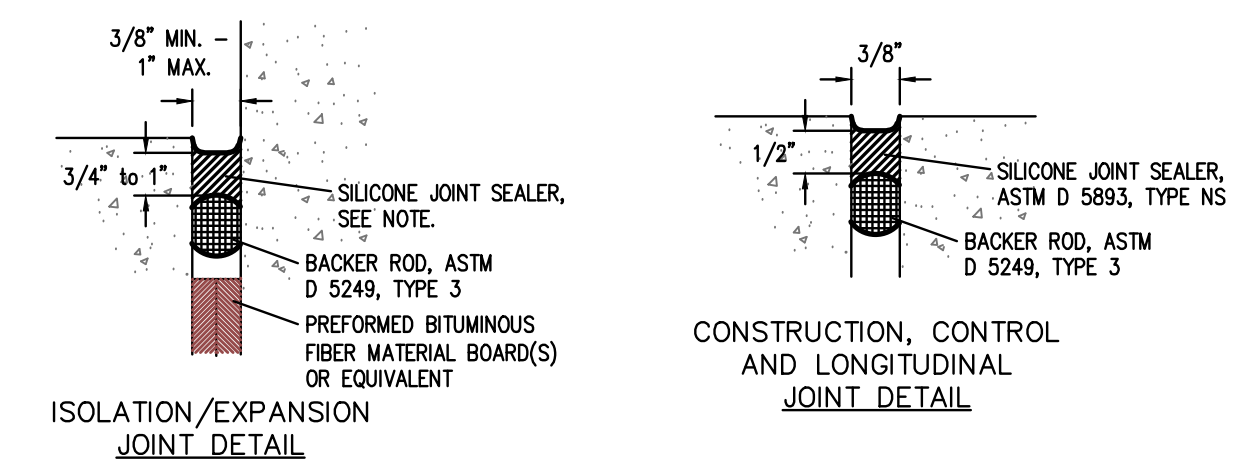
CONCRETE GENERATOR PAD NOTES
(n.t.s.)



DETAIL OF TYPICAL CONCRETE SIDEWALK



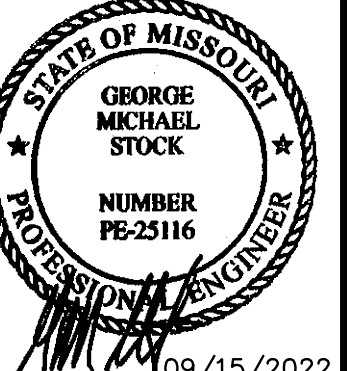
INTEGRAL SIDEWALK/CURB
(n.t.s.)



- PAVEMENT NOTES:**
- ALL MEANS AND METHODS OF CONCRETE AND ASPHALTIC CONCRETE SHALL BE IN ACCORDANCE WITH CITY OF O'FALLON AND ST. LOUIS COUNTY DESIGN CRITERIA AND STANDARD SPECIFICATIONS FOR STREET CONSTRUCTION, CURRENT EDITION AND THE AMERICAN CONCRETE INSTITUTE'S GUIDE FOR THE DESIGN AND CONSTRUCTION OF CONCRETE PARKING LOTS (ACI 330R-08). IT IS THE CONTRACTOR'S RESPONSIBILITY TO OBTAIN CURRENT EDITIONS, PRIOR TO CONSTRUCTION.
 - PAVEMENT SECTIONS ARE SUBJECT TO GEOTECHNICAL ENGINEER AND OWNER REVIEW AND APPROVAL. CONTRACTOR SHALL PROVIDE PAVEMENT SUBMITTAL TO GEOTECHNICAL ENGINEER FOR REVIEW & APPROVAL.
 - IT IS THE CONTRACTOR'S RESPONSIBILITY TO APPLY THE RECOMMENDATIONS SUPPLIED IN THE GEOTECHNICAL REPORT.
 - CONSTRUCTION JOINTS ARE REQUIRED BETWEEN ALL POURS SEPARATED BY MORE THAN 90 MINUTES TIME.
 - FIFTEEN FOOT (15) MAXIMUM SPACING BETWEEN CONTROL JOINTS.
 - FILL JOINTS TO WITHIN 1/8" OF SURFACE WITH JOINT SEALER.
 - ISOLATION JOINTS REQUIRED AROUND ALL UTILITY STRUCTURES THAT ARE LOCATED WITHIN THE LIMITS OF CONCRETE PAVEMENT.

JOINT DETAILS
(n.t.s.)

PAVEMENT THICKNESS	DOWEL BARS - EPOXY COATED	
	DIAMETER	LENGTH
7 INCHES	1 INCH	18 INCHES
8 INCHES	1 INCH	18 INCHES
9 INCHES	1-1/4 INCHES	18 INCHES
10 INCHES	1-1/4 INCHES	18 INCHES
11 INCHES OR <	1-1/2 INCHES	18 INCHES



09/15/2022
GEORGE M. STOCK E-25116
CIVIL ENGINEER
CERTIFICATE OF AUTHORITY
NUMBER: 000996

REVISIONS:

NO.	DESCRIPTION	DATE
1	ENGINEERING PLAN REVIEW SUBMITTAL 06/09/21	
2	ENGINEERING PLAN REVIEW AND SUBMITTAL REVISED PER CITY COMMENTS AND CLIENT. PROJECT & CONTRACTOR REVISIONS 09/20/21	
3	ENGINEERING PLAN REVIEW 3rd SUBMITTAL 10/19/21. REVISED PER CITY COMMENTS DATED 10/14/21.	
4	ENGINEERING PLAN REVIEW 4th SUBMITTAL 11/02/21. REVISED PER CITY COMMENTS DATED 11/02/21.	
5	ADDENDUM #1 03/29/22 - WATER SERVICE REVISIONS PER CITY COMMENTS DATED 03/23/22.	
6	ADDENDUM #2 06/23/22 - CENTER CROP DETENTION SYSTEM SHOP DRAWINGS ADDED TO PLAN.	
7	ADDENDUM #3 08/27/22 - METAL BACKFILL COMPACTOR REQUIREMENTS.	
8	ADDENDUM #4 09/28/22 - ADDED TYPICAL MANHOLE DETAIL TO SHEET C-13.0	
9	ADDENDUM #5 09/15/22 - REVISED WALL 1 TOP OF WALL (16) ELEVATIONS. ADDED GENERATOR PAD.	

DRAWN BY: D.P.B. CHECKED BY: G.M.S.
DATE: 01/25/2021 JOB NO: 220-6898
M.S.D. P.#: BAZE MAP #:
S.L.C. H&T #:
M.D.N.R. #:

SHEET TITLE: **CONSTRUCTION DETAILS**

SHEET NO.: **C-13.0**