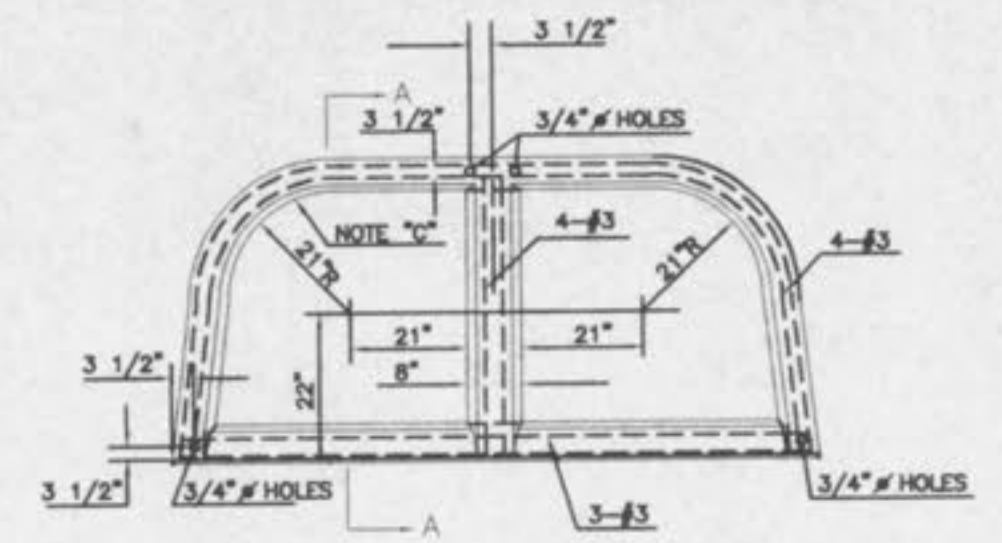
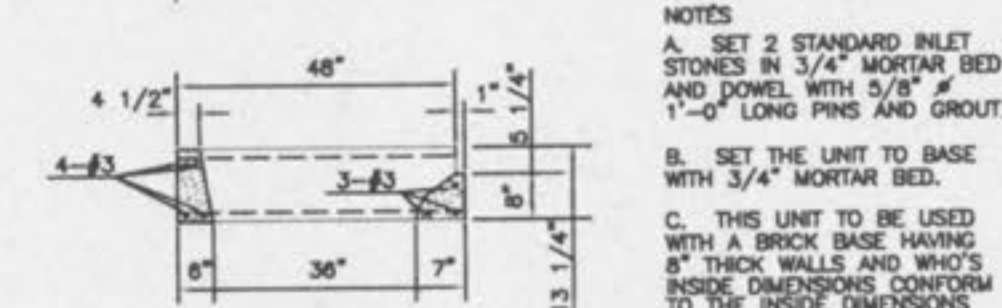
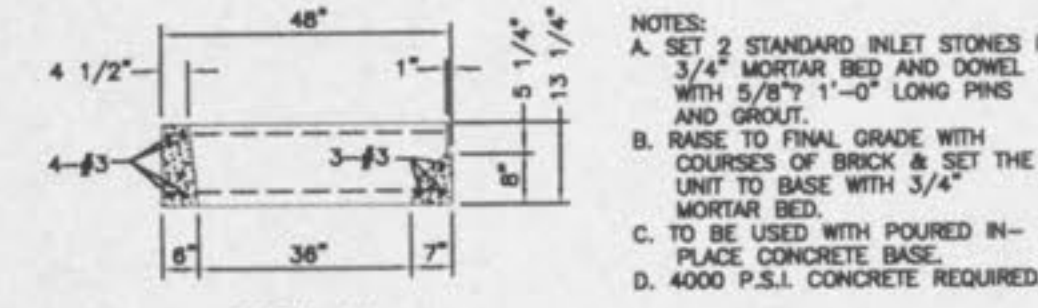


NOTES:
 A. SET 2 STANDARD INLET STONES IN 3/4\"/>

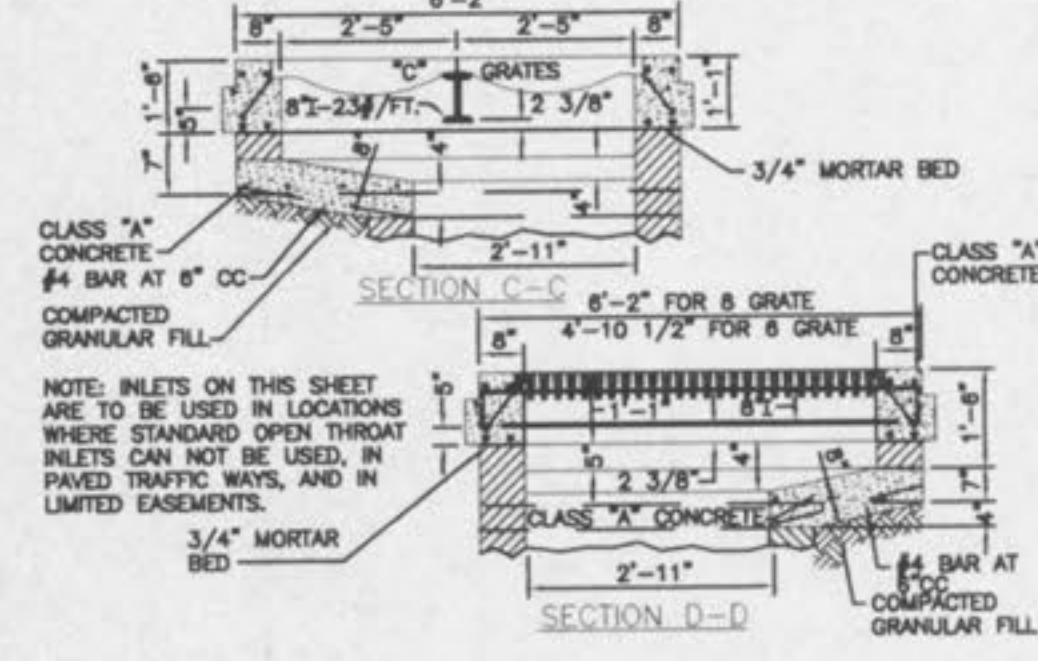
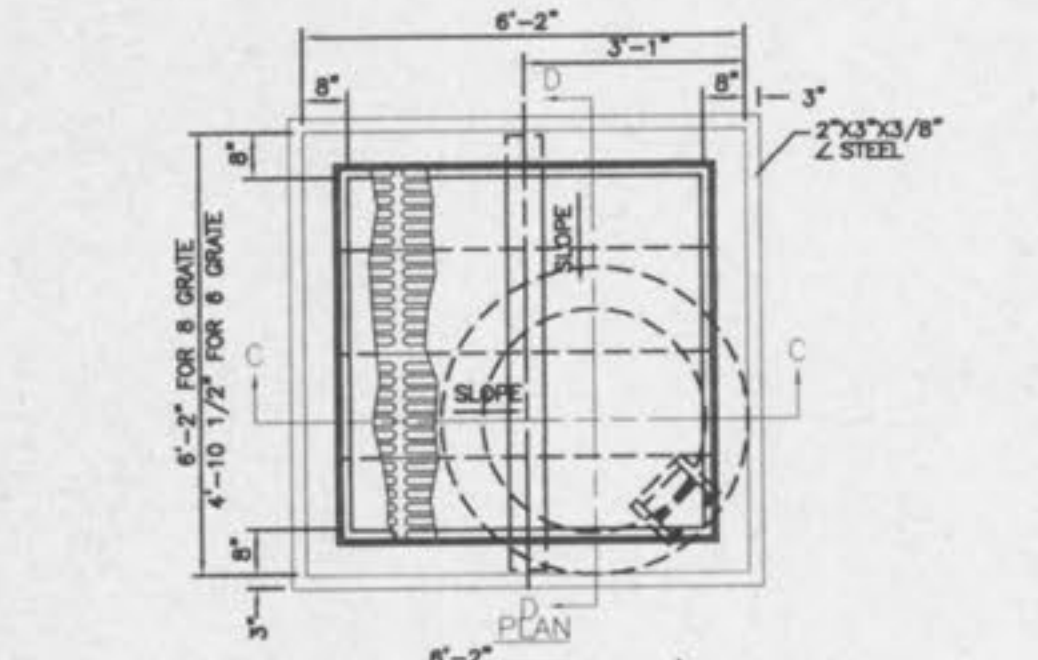


NOTES:
 A. SET 2 STANDARD INLET STONES IN 3/4\"/>

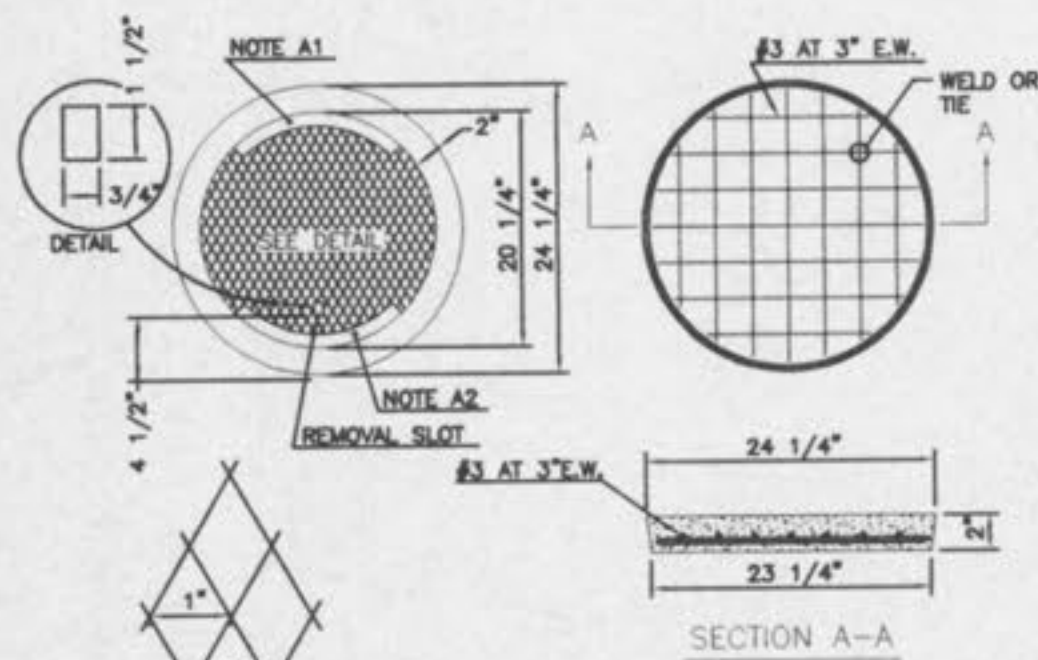


PRE-CAST CONCRETE UNIT FOR DOUBLE CURB INLET (WITH CONCRETE BASE)

PRE-CAST CONCRETE UNIT FOR DOUBLE CURB INLET (WITH BRICK BASE)



6 & 8 GRATE INLET

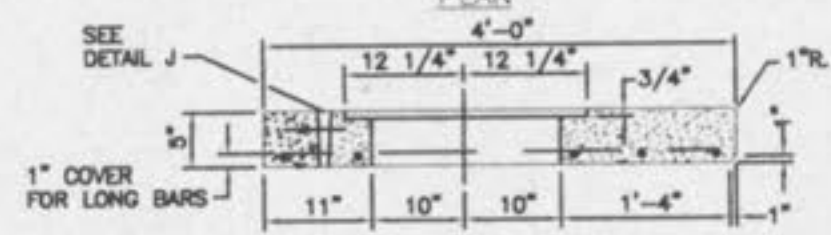
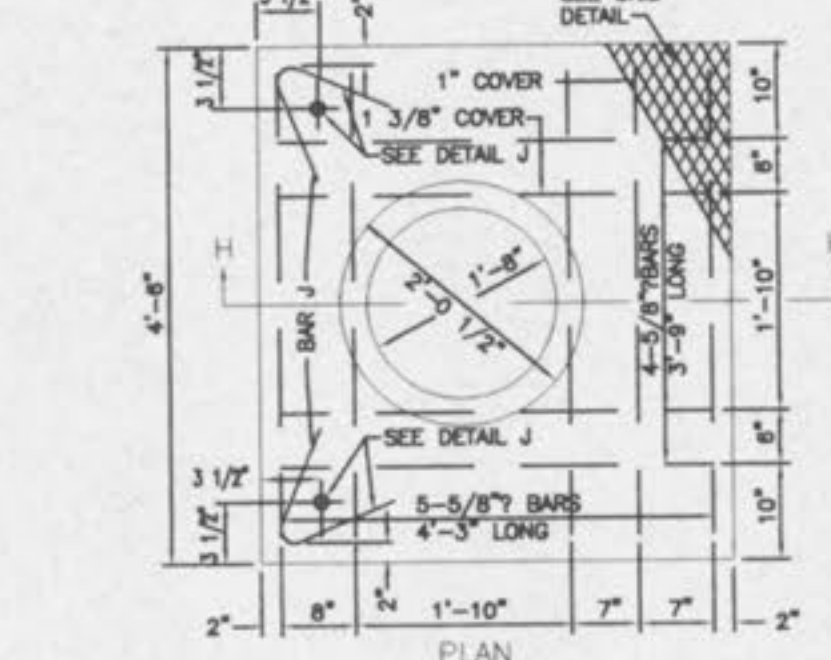


GRID DETAIL

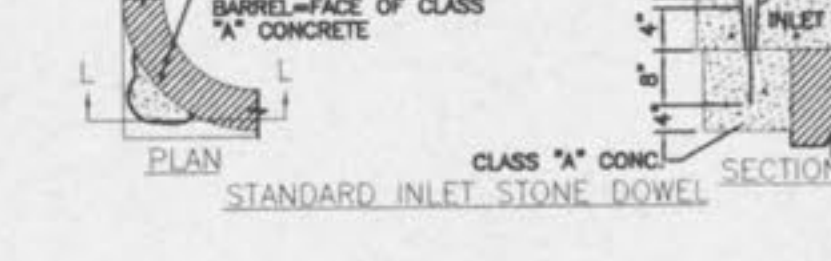
NOTE: PROVIDE 1/8\"/>



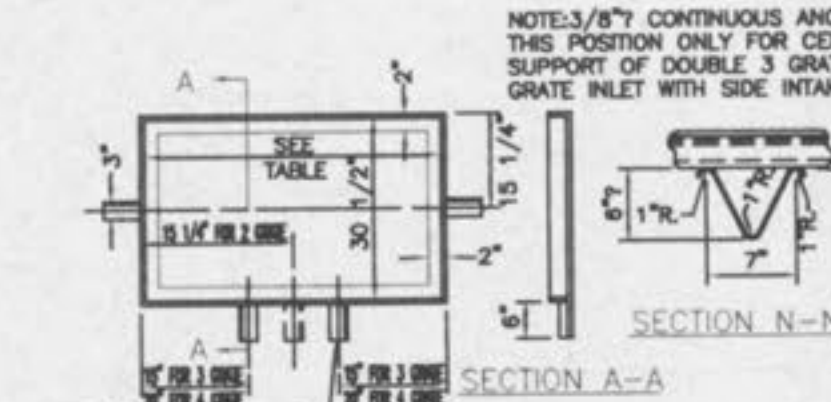
PRE-CAST CONCRETE INLET COVER



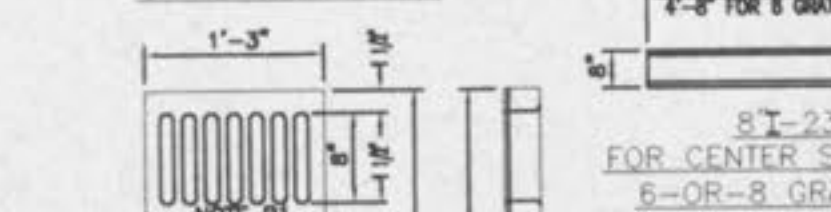
SECTION H-H REINFORCED CONCRETE STONE STANDARD STREET INLET AND MAIN UNIT OF MULTIPLE UNIT INLET



STANDARD - INLET STONES, BLOCKS & DESIGN DETAILS



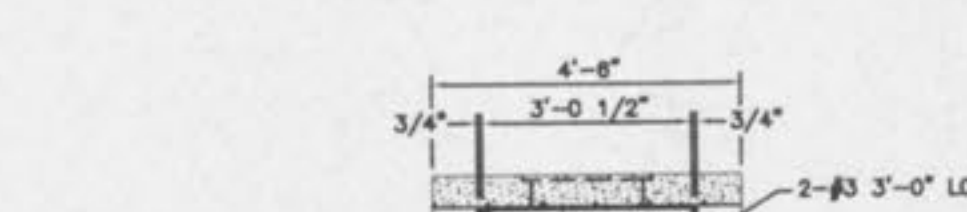
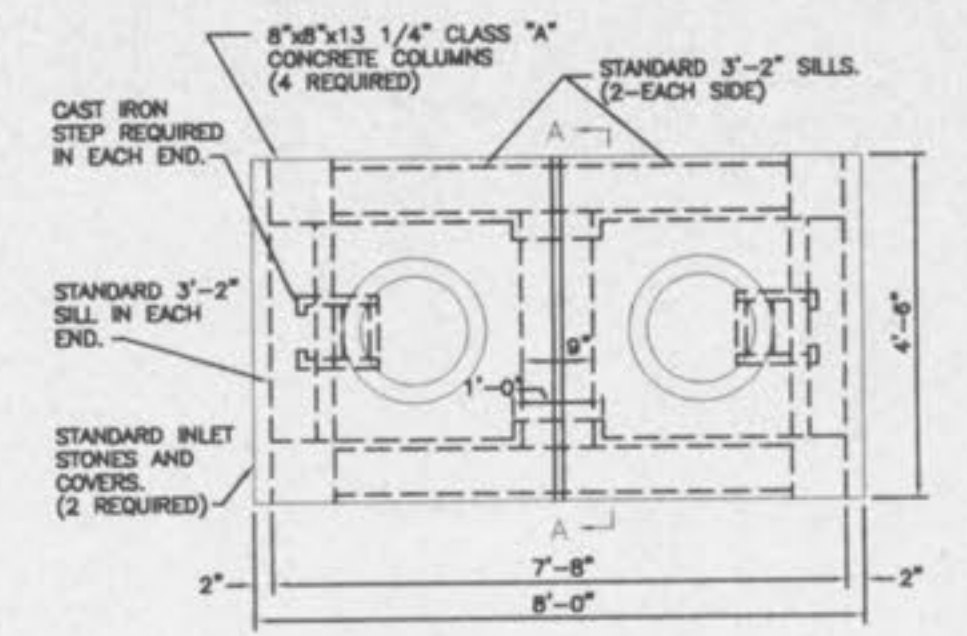
DETAIL OF CONTINUOUS ANCHOR FOR ANGLE SEAT



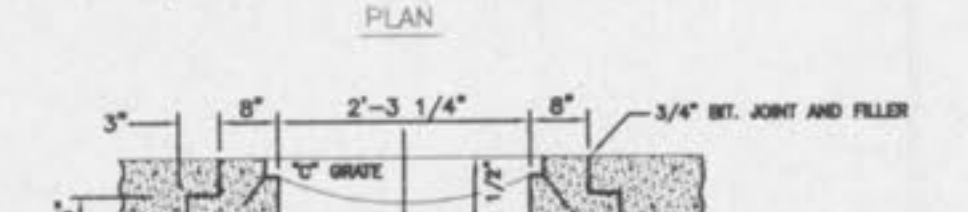
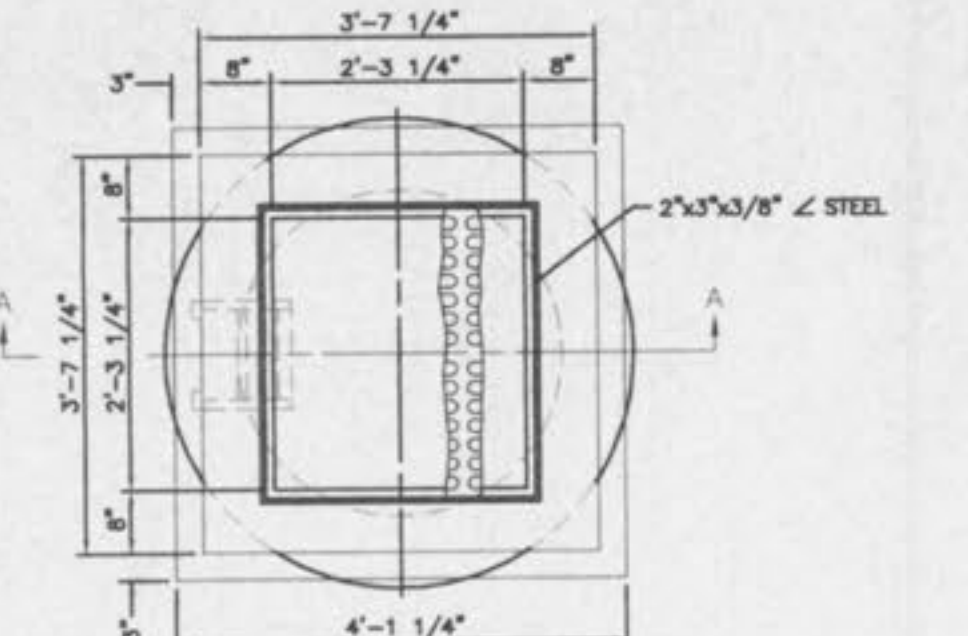
8\"/>

TABLE FOR SIZE OF FRAMES
2 GRATE = 30 1/2\"/>
3 GRATE = 30 1/2\"/>
4 GRATE = 30 1/2\"/>

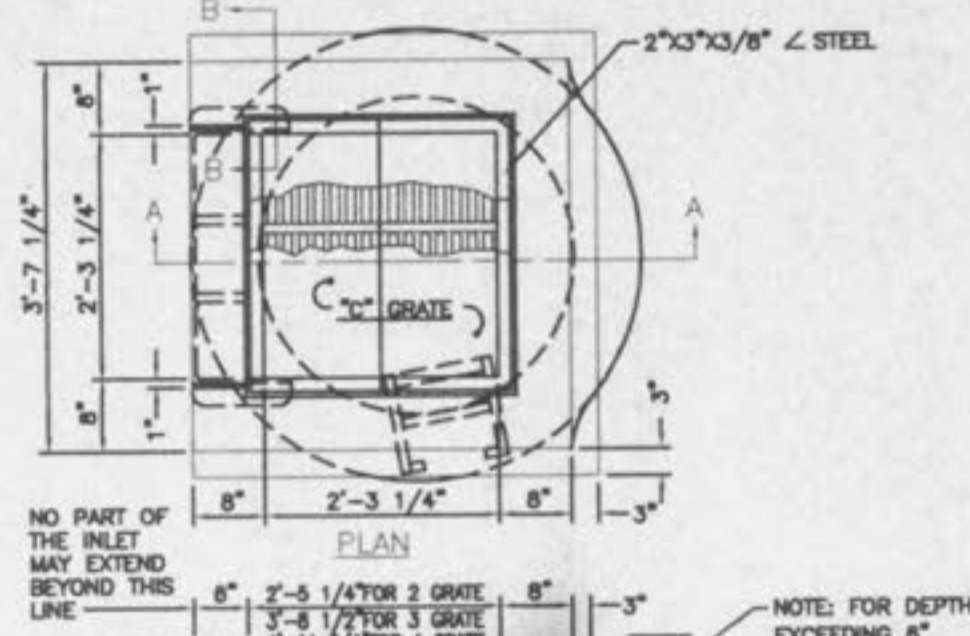
NOTE B: PROVIDE 1/8\"/>



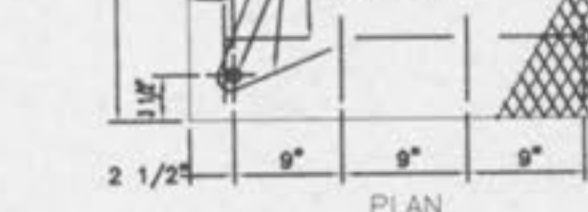
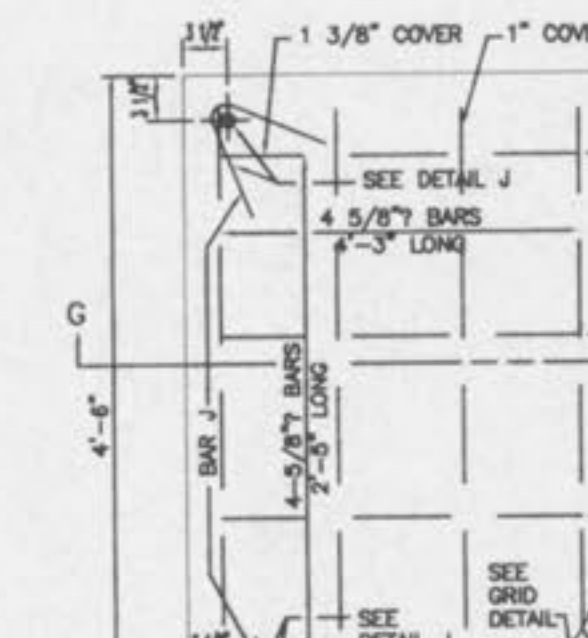
DOUBLE AREA INLET OPEN 4 SIDES



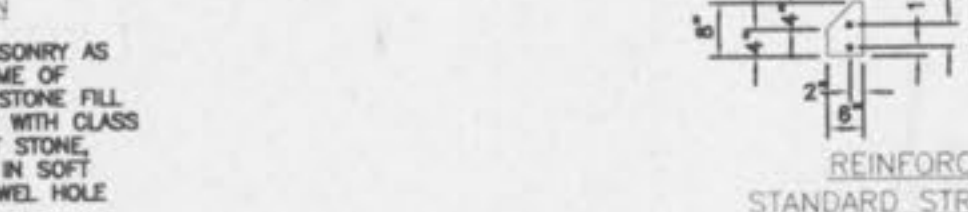
2 GRATE INLET



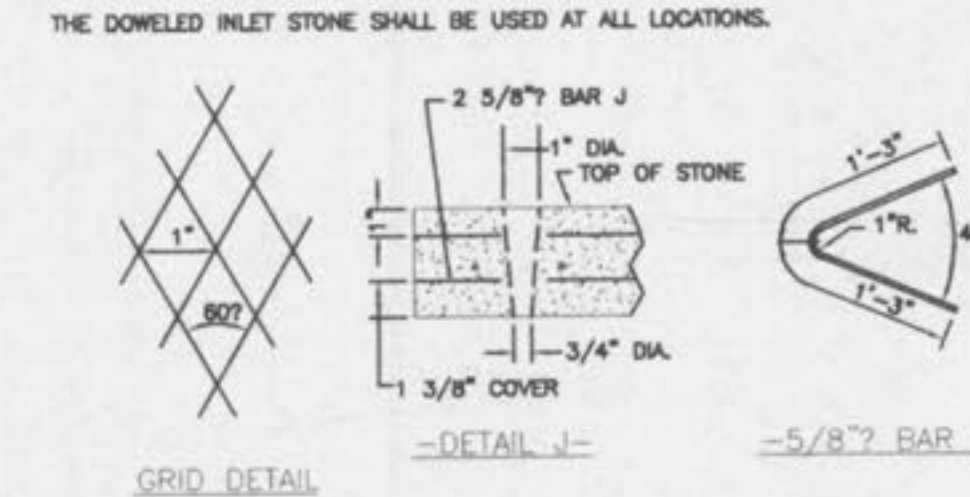
2 GRATE INLET WITH SIDE INTAKE UNIT



SECTION G-G REINFORCED CONCRETE SILL FOR STANDARD STREET INLET & MULTIPLE INLET



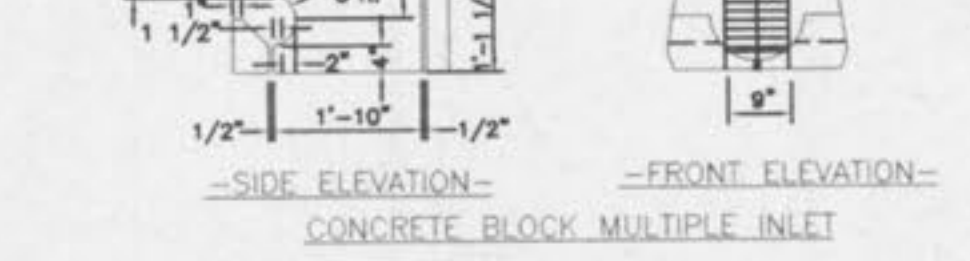
SECTION K-K MULTIPLE INLET STONE DOWEL



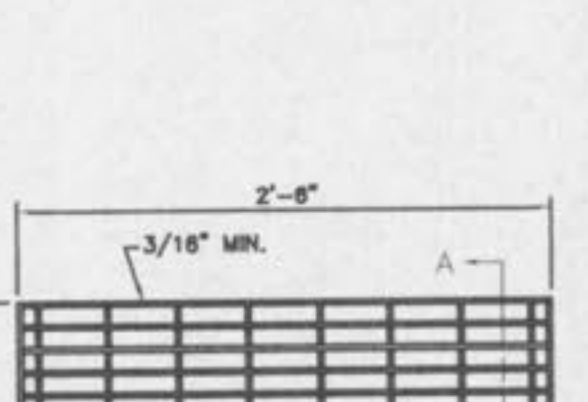
GRID DETAIL



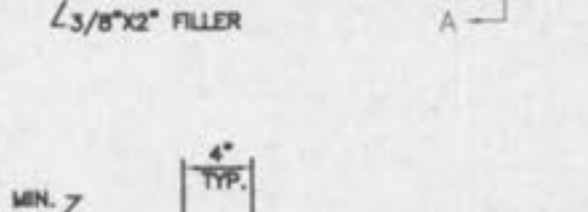
SECTION J-J



-SIDE ELEVATION-
-FRONT ELEVATION-
CONCRETE BLOCK MULTIPLE INLET



SECTION A-A

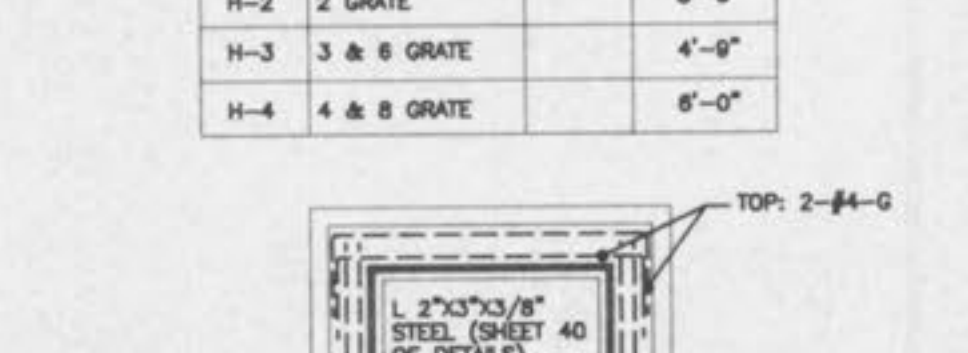


SECTION A-A

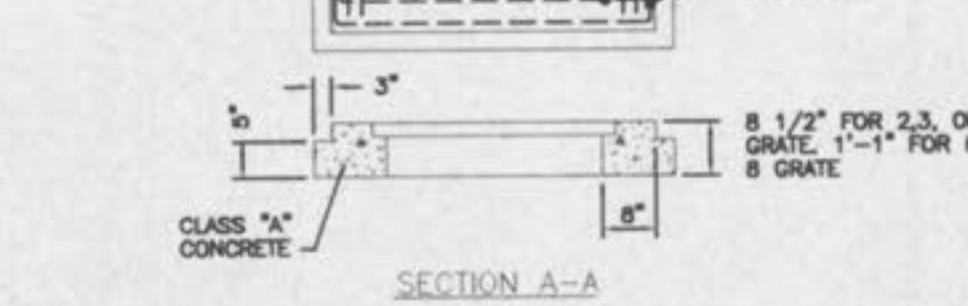
FINISH MATERIAL - ASPHALTIC 10 MIL COATING
 - MILD CARBON STEEL - ASTM A569
 - H-20 LOADING
 - 85 LB. MIN.
 - ALL DIMENSIONS 11/8\"/>

DETAIL OF STEEL GRATE (ALTERNATE TO CAST IRON \"C\" GRATE)

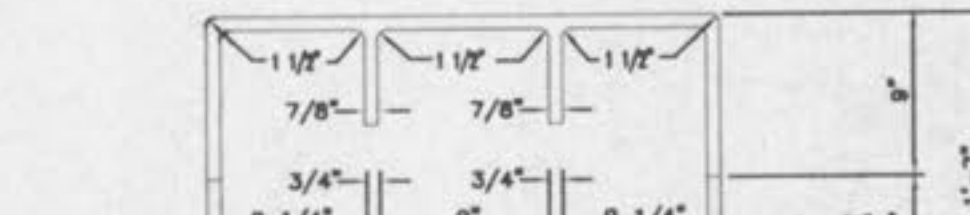
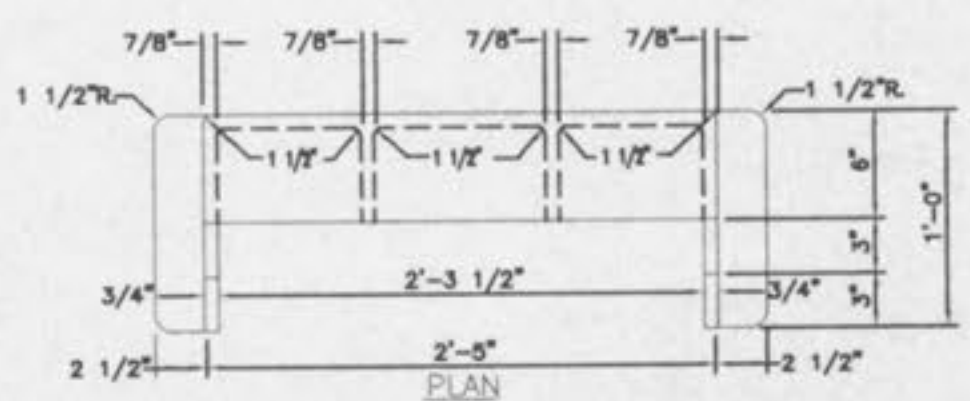
CALL	USE	σ	STRAIGHT BARS
G-1	2,3 OR 4 GRATE	3'-4"	
G-2	6 & 8 GRATE	5'-10"	
H-2	2 GRATE	3'-6"	
H-3	3 & 6 GRATE	4'-0"	
H-4	4 & 8 GRATE	6'-0"	



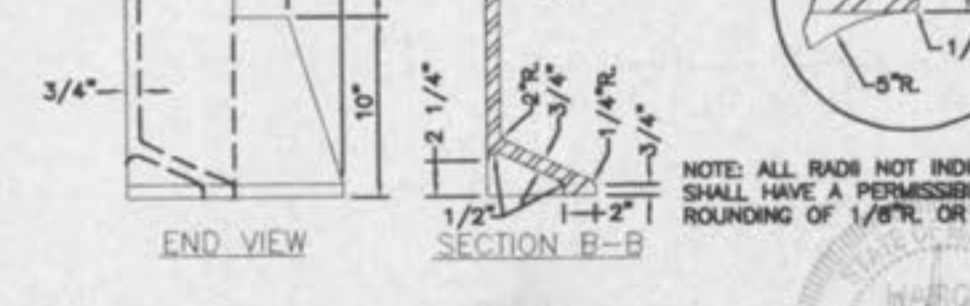
SECTION A-A



STEEL REQUIREMENTS FOR GRATE INLET SEAT



SECTION A-A



CAST IRON SIDE INTAKE UNIT FOR GRATED INLETS 249 LBS.

PICKETT RAY & SILVER
 CIVIL ENGINEERS
 PLANNERS
 LAND SURVEYORS

HAMPTON WOODS
 CONSTRUCTION DETAILS
 Prepared For: **SUMMIT POINTE L.C.**

NO.	DATE	REV.	BY	DESCRIPTION
1	07-31-02	REV.	PER CITY OF FALLON	
2	08-16-02	REV.	PER CITY OF FALLON	
3	06-26-02	REV.	PER CITY OF FALLON	

ENGINEERS AUTHENTICATION
 The responsibility for professional engineering liability on this project is hereby limited to the set of plans authenticated by the seal, signature, and date hereunder attached. Responsibility is disclaimed for all other engineering plans involved in this project and specifically excludes revisions after this date unless reauthenticated.



DRAWN: **ABK** DATE: **MAY, 2002**
 CHECKED: **D.W.D.** DATE: **MAY, 2002**

PROJECT # **95067.SUPO.00R**
 TASK # **4** FIELD BOOK **806**