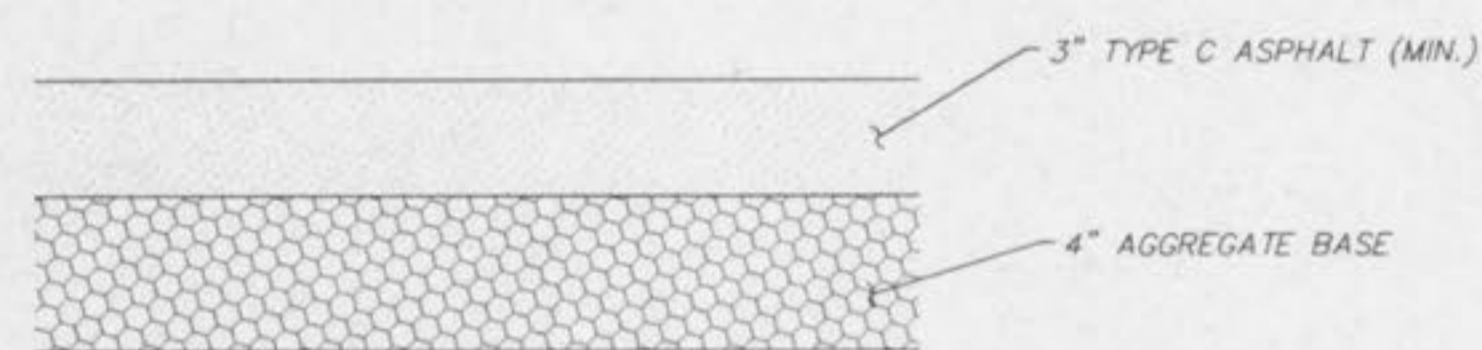


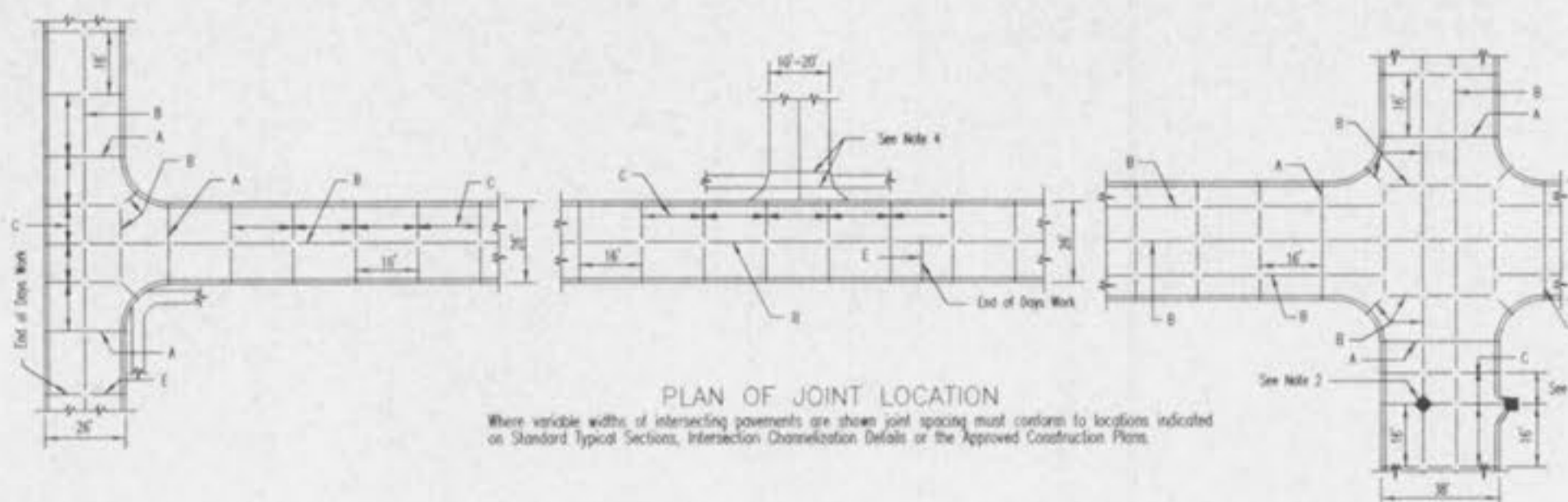
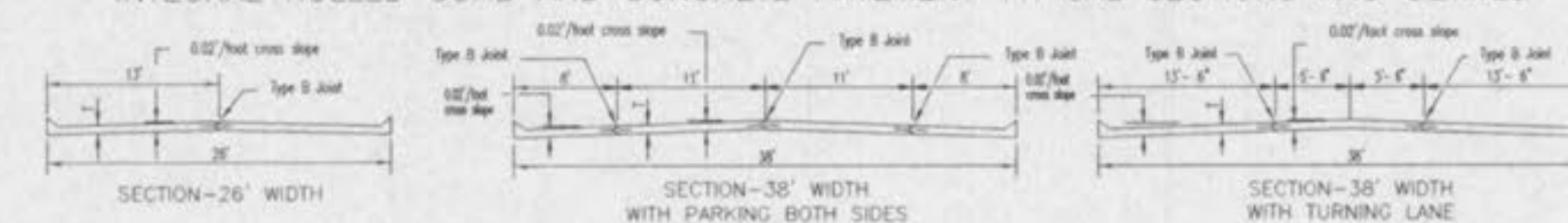
- NOTES:
1. A 1" JOINT IS REQUIRED AT THE CURB AND GARAGE FOR ALL DRIVEWAYS LOCATED ON THE OUTER EDGE OF CURVED PAVEMENT, UNLESS GROOVED JOINTS ARE USED AT SIDEWALK. THEN A 2" JOINT IS REQUIRED AT CURB.
  2. A 1/2" JOINT IS REQUIRED AT THE CURB AND GARAGE FOR ALL DRIVEWAYS LOCATED ON TANGENT SECTIONS OF PAVEMENT OR ON THE INNER EDGE OF CURVED PAVEMENT.
  3. EXPANSION JOINT MATERIAL MUST EXTEND THROUGH THE FULL DEPTH OF THE PAVEMENT.
  4. SIDEWALK THICKNESS SHALL BE A MINIMUM OF 7" THROUGH COMMERCIAL DRIVEWAYS.

SAINT CHARLES COUNTY  
HIGHWAY DEPARTMENT  
ST. CHARLES, MISSOURI  
PAVEMENT CONSTRUCTION DETAILS  
Integral Curb Detail "D" at Driveways  
DATE: 05/02/02 DRAWING: C502.02



**MULTI-USE TRAIL DETAIL**  
(MINIMUM 4' WIDE)  
NOT TO SCALE

INTEGRAL ROLLED CURB AND CONCRETE PAVEMENT TYPICAL SECTIONS AND DETAILS



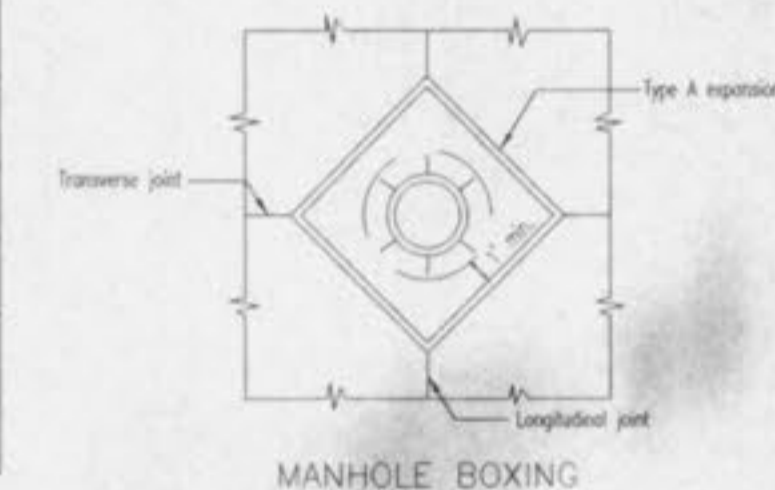
PLAN OF JOINT LOCATION  
Where variable widths of intersecting pavements are shown joint spacing must conform to locations indicated on Standard Typical Sections, Intersection Construction Details or the Approved Construction Plans.

GENERAL NOTES

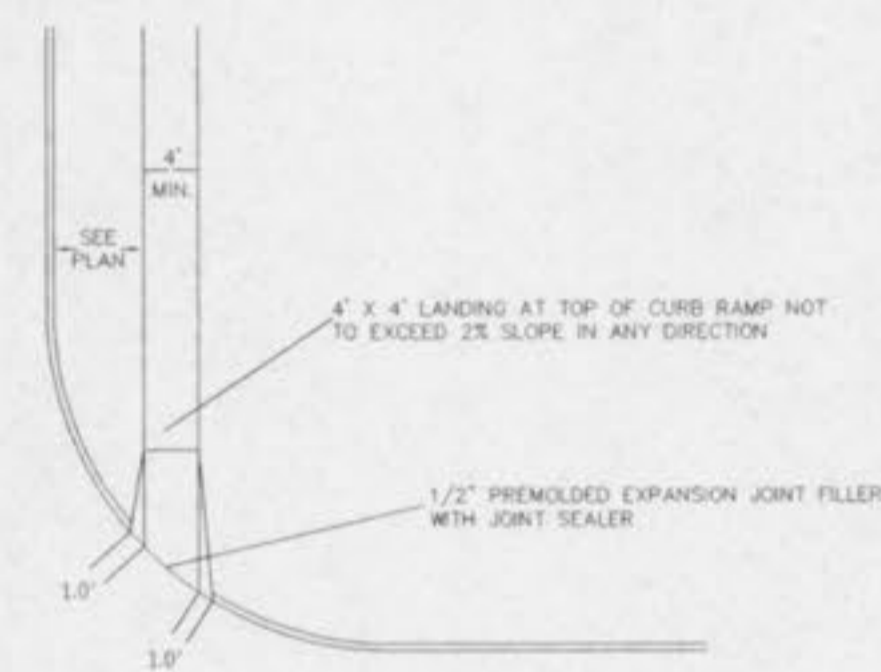
1. Do not scale drawing. Follow dimensions.
2. All street inlets shall be separated from the pavement and curb by expansion joint material extending completely through curb and slab. Manhole casting within the pavement limits shall be boxed as shown.
3. When a joint falls within 5ft. of, or contacts inlets, manholes, or other structures, shorten one or more joints either side of opening to permit joint to fall on round structures; and/or between corners of rectangular structures.
4. Driveway configurations are shown in the "Entrance Construction Details".
5. Construction joints and tie bars may be omitted when curb is poured monolithic with pavement.
6. Minimum Thickness for Pavement is:  
Residential 26' wide Streets: 6"  
Residential 38' wide Streets: 7"
7. For joint and bar requirements refer to the Pavement Construction Details for "Joints and Curb". Std. Dwg. C502.03. Note that the width and location may change the type of joint required.
8. Transverse or longitudinal construction joints in slip formed pavements may be made with a groover or tool. If such device has been approved in advance by the Department.
9. The locations of the Type B longitudinal construction joints in the sections may be interchanged for the different widths of construction if approved by the Department.

JOINT REQUIREMENTS FOR CONCRETE PAVEMENT		
STREET	JOINT TYPE	JOINT AND BAR REQUIREMENTS
RESIDENTIAL 3 LANE 38' wide pavement	Transverse	TYPE C no steel bars
	Longitudinal	Within a poured section and of the edge between two poured sections: TYPE B 5/8" dia deformed tie bars 30'lg @ 30' cts. TYPE A no steel bars
RESIDENTIAL 2 LANE 26' wide pavement	Transverse	TYPE C no steel bars
	Longitudinal	Full Width Construction: TYPE B 5/8" dia deformed tie bars 30'lg @ 30' cts. Half Width Construction: TYPE B modified with 1/2" dia deformed tie bars 30'lg @ 30' cts.
6" thick concrete	Expansion	TYPE A no steel bars

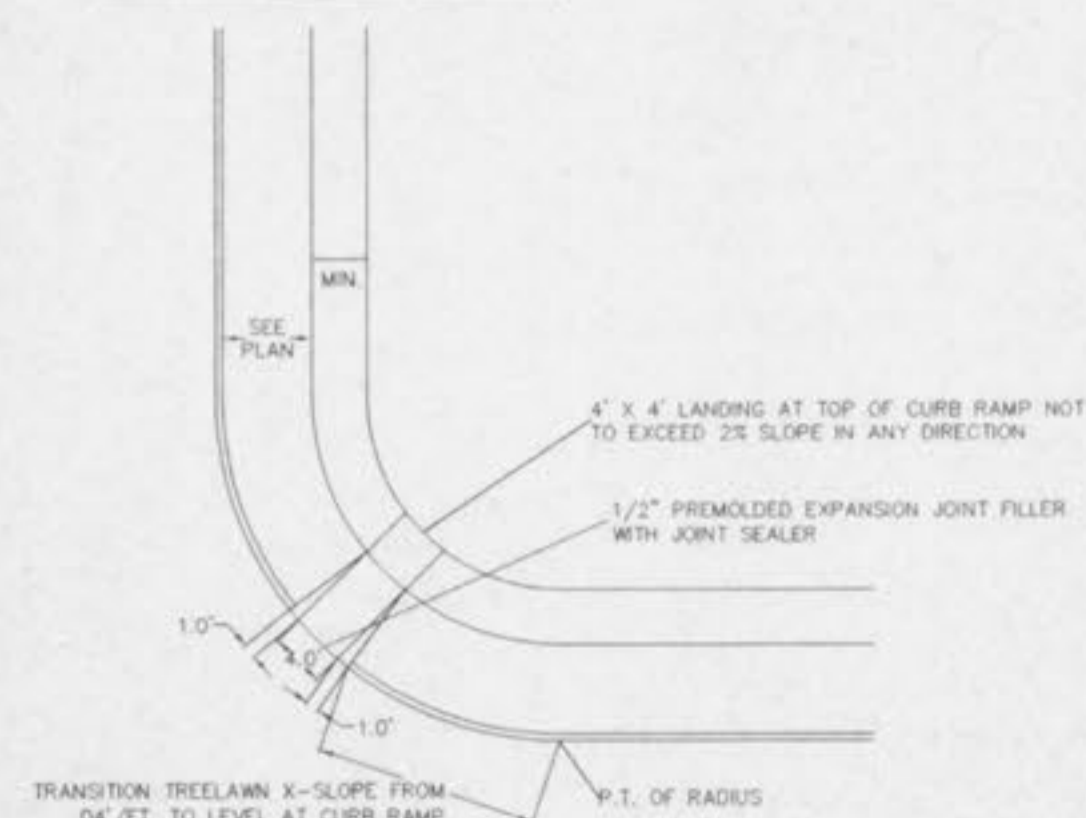
- NOTE: Joint filler material shall meet ASTM designations as follows:  
 Bituminous type: ACTM D-394-53  
 Non extruding & resilient bituminous type (fibers): ACTM D-1751-00T  
 Non extruding & resilient non bituminous type (rubber): ACTM D-5249
- NOTE: Joint sealant material shall meet ASTM and MSRTD designations as follows:  
 ACTM D-3405, MSRTD M-301 or  
 ACTM D-1190-74, MSRTD M-173-84 or latest revisions thereof.



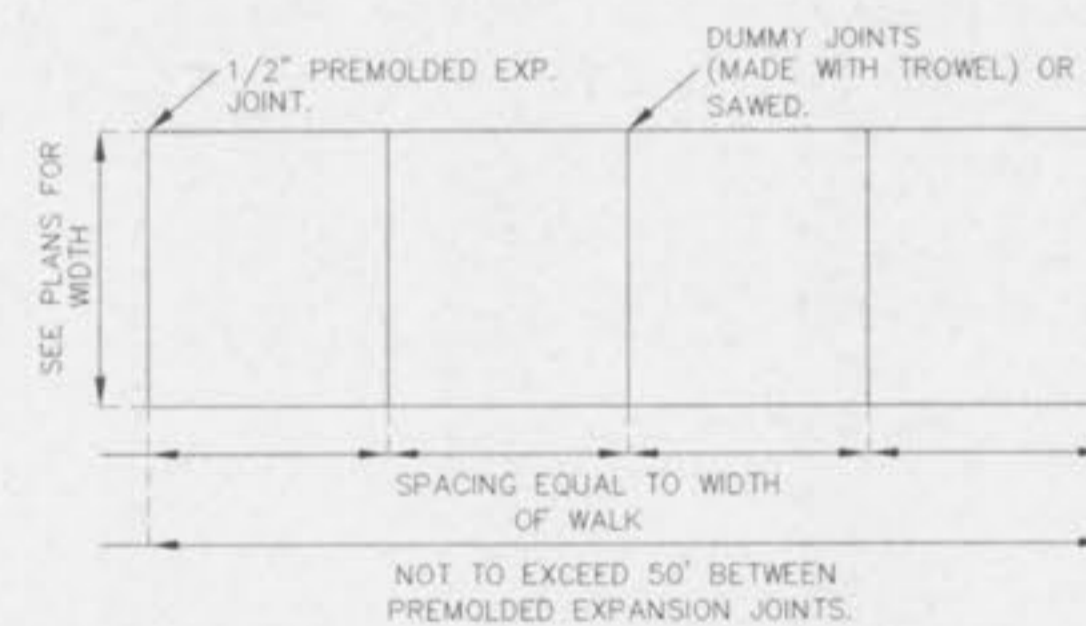
SAINT CHARLES COUNTY  
HIGHWAY DEPARTMENT  
ST. CHARLES, MISSOURI  
PAVEMENT CONSTRUCTION DETAILS  
INTEGRAL ROLLED CURB AND CONCRETE PAVEMENT  
TYPICAL SECTIONS AND DETAILS  
DATE: December, 2002 DRAWING: C502.02



STRAIGHT CURB RAMP

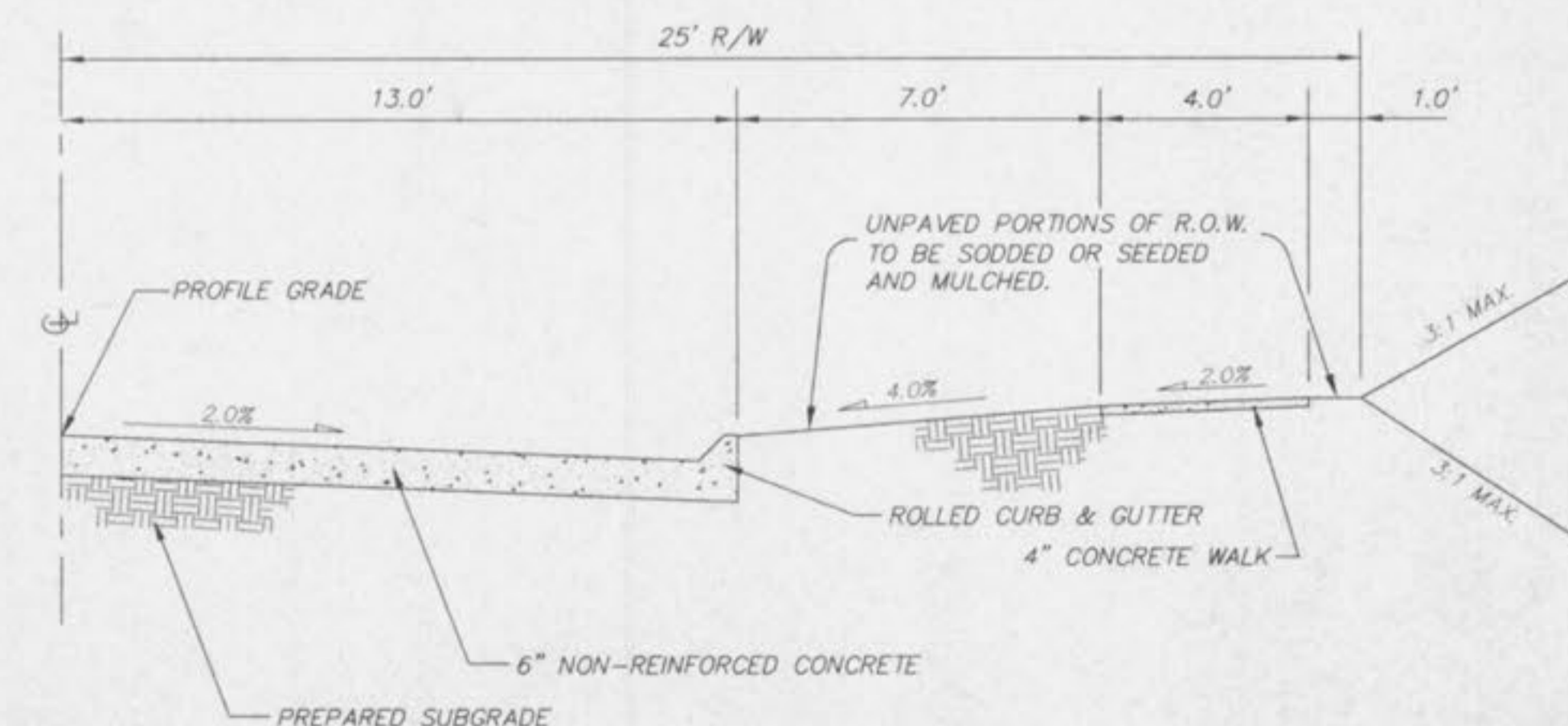


DIAGONAL CURB RAMP



SIDEWALK

CONCRETE SIDEWALK



TYPICAL PAVEMENT 1/2 SECTION

NOT TO SCALE

Sidewalks, Curb ramps, ramp and accessible parking spaces shall be constructed in accordance with the current approved "Americans with disabilities Act Accessibility Guidelines" (ADAAC) along with the required grades, construction materials, specifications and signage. If any conflict occurs between the above information and the plans the ADAAC guidelines shall take precedence and the contractor prior to any construction shall notify the Project Engineer.

**PICKETT RAY & SILVER**  
CIVIL ENGINEERS  
PLANNERS  
LAND SURVEYORS  
383 Mid Rivers Mall Drive  
St. Peters, MO 63376  
Phone (636) 397-1211  
Fax (636) 397-1104

**HAMPTON WOODS**  
CONSTRUCTION DETAILS  
Prepared For:  
SUMMIT POINTE L.C.

239 ROY HILL ROAD  
ST. CHARLES, MO 63301  
636-848-0980

REVISIONS	NO.	DATE	REV.	PER CITY OF FALLON
	1	07-21-02	REV.	PER CITY OF FALLON
	2	08-16-02	REV.	PER CITY OF FALLON
	3	08-23-02	REV.	PER CITY OF FALLON
	4	08-28-02	REV.	PER CITY OF FALLON

**ENGINEERS AUTHENTICATION**  
The responsibility for professional engineering liability on this project is hereby limited to the set of plans authenticated by the seal, signature, and date hereunder attached. Responsibility is disclaimed for all other engineering plans involved in this project and specifically excludes revisions after this date unless reauthenticating.

PICKETT, RAY & SILVER, INC.  
STATE OF MISSOURI  
REGISTERED PROFESSIONAL ENGINEER  
HAROLD J. BARTON  
NUMBER E-17751

DRAWN	DATE
ABK	MAY, 2002
CHECKED	DATE
D.W.D.	MAY, 2002
PROJECT #	95067.SUP0.00R
TASK #	4 FIELD BOOK

HAMPTON WOODS  
CONSTRUCTION DETAILS

SHEET 15 OF 19

© Copyright 2002 by Pickett, Ray & Silver, Inc.