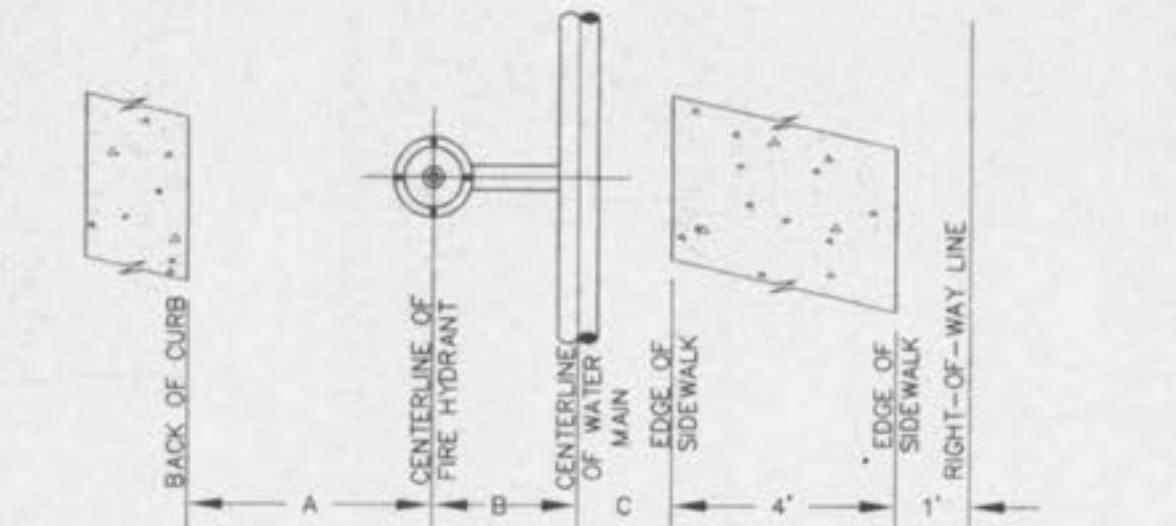


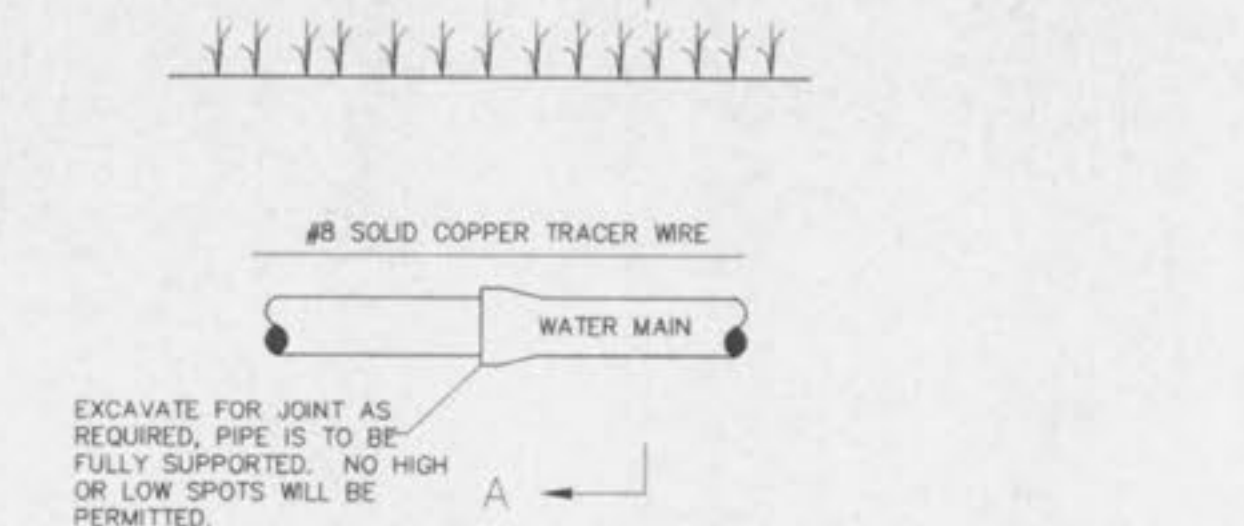
FLUSHING HYDRANT DETAIL

NOT TO SCALE



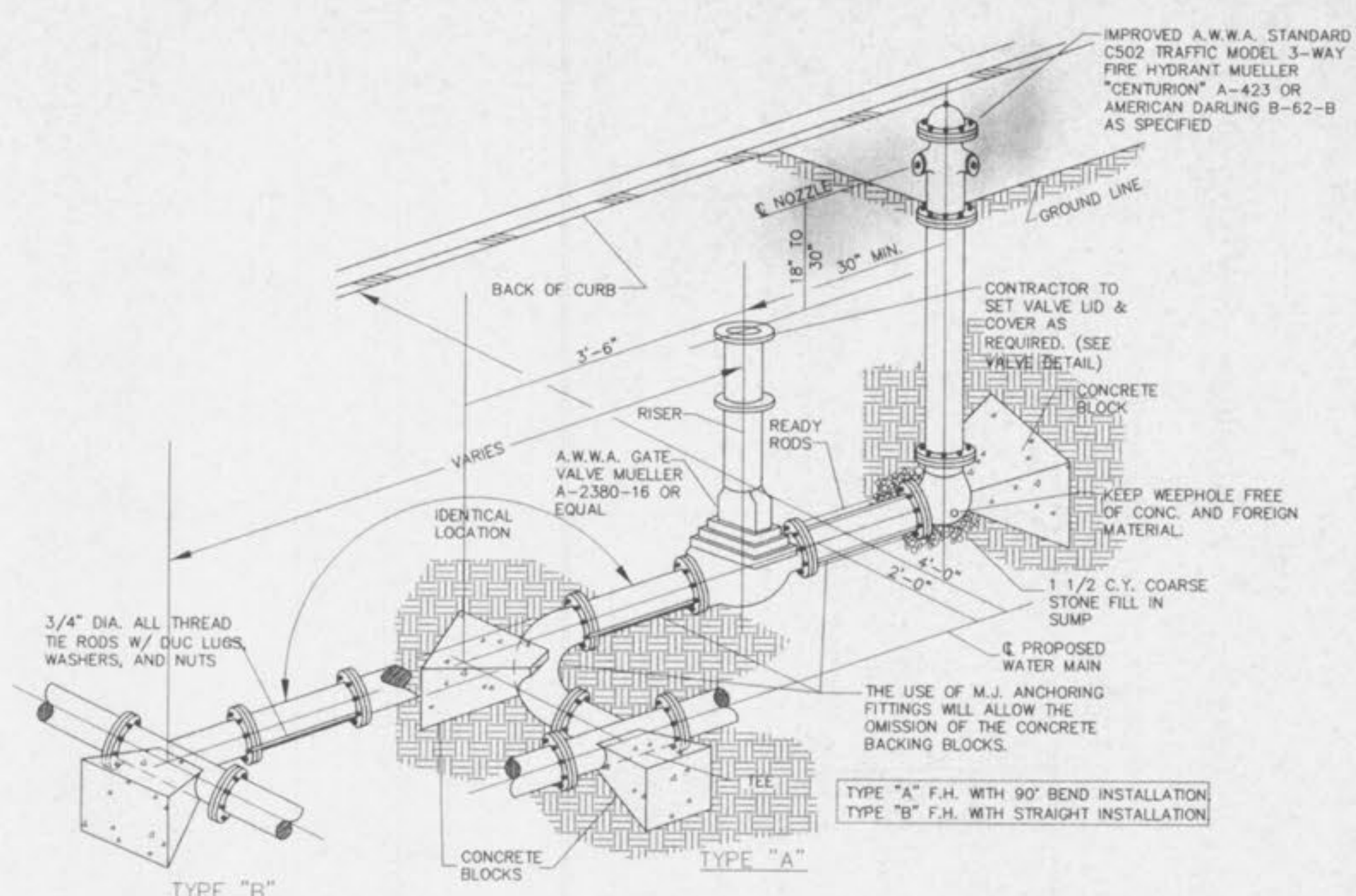
TYPICAL WATER MAIN AND FIRE HYDRANT LOCATIONS

CONFIGURATION
50' RIGHT-OF-WAY/26' PAVEMENT/WITHOUT SIDEWALK
50' RIGHT-OF-WAY/26' PAVEMENT/WITH SIDEWALK



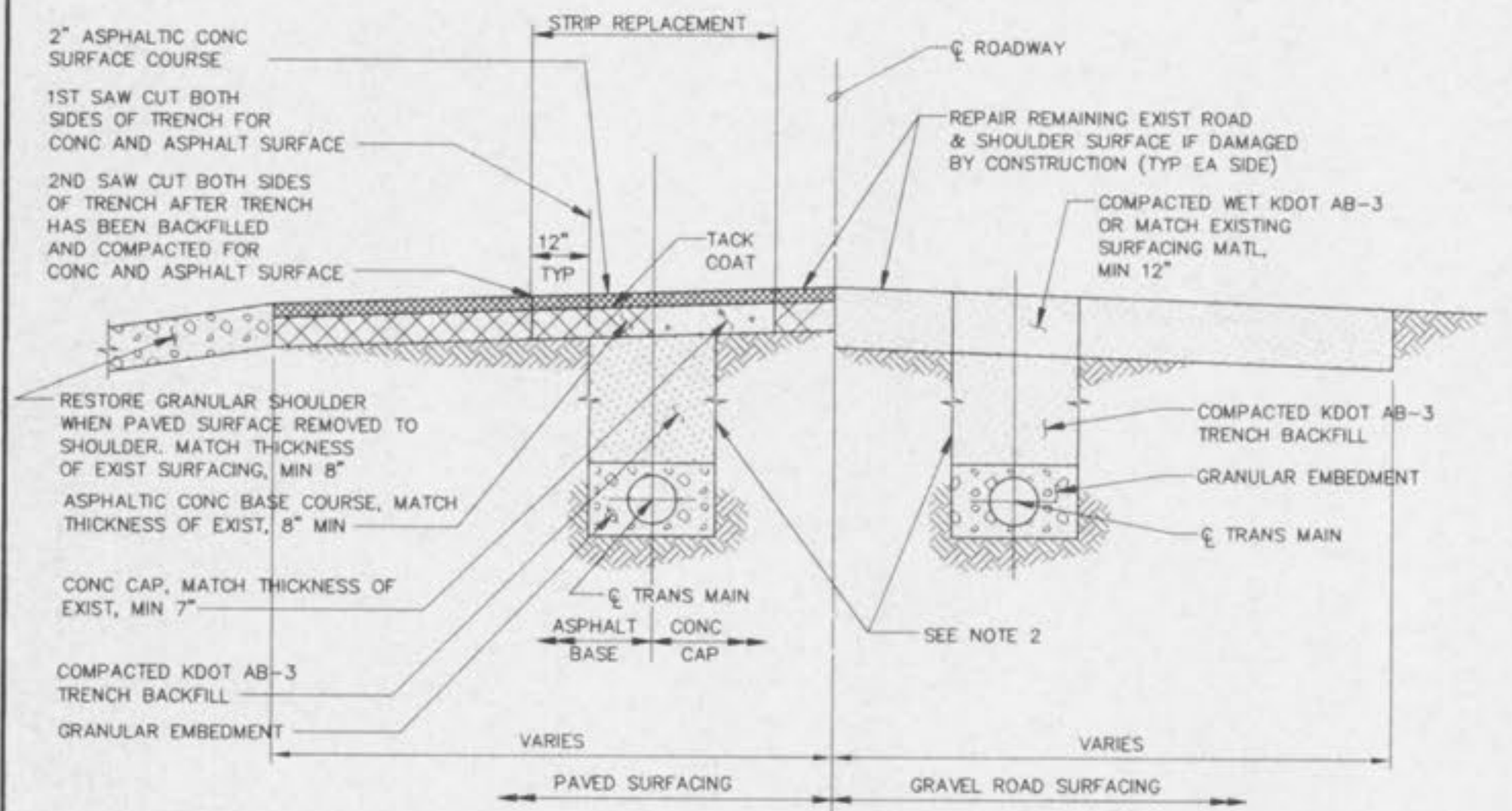
TYPICAL WATER MAIN INSTALLATION DETAILS

NOT TO SCALE



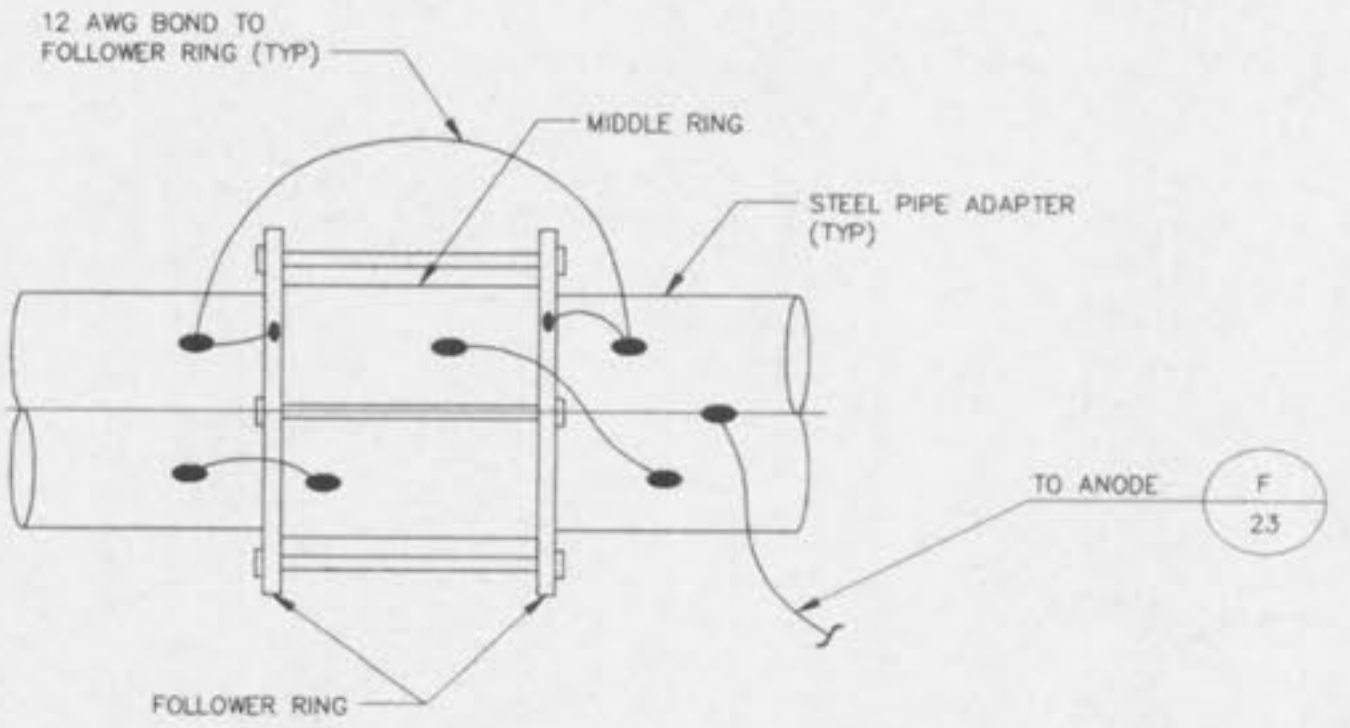
FIRE HYDRANT DETAIL

NOT TO SCALE



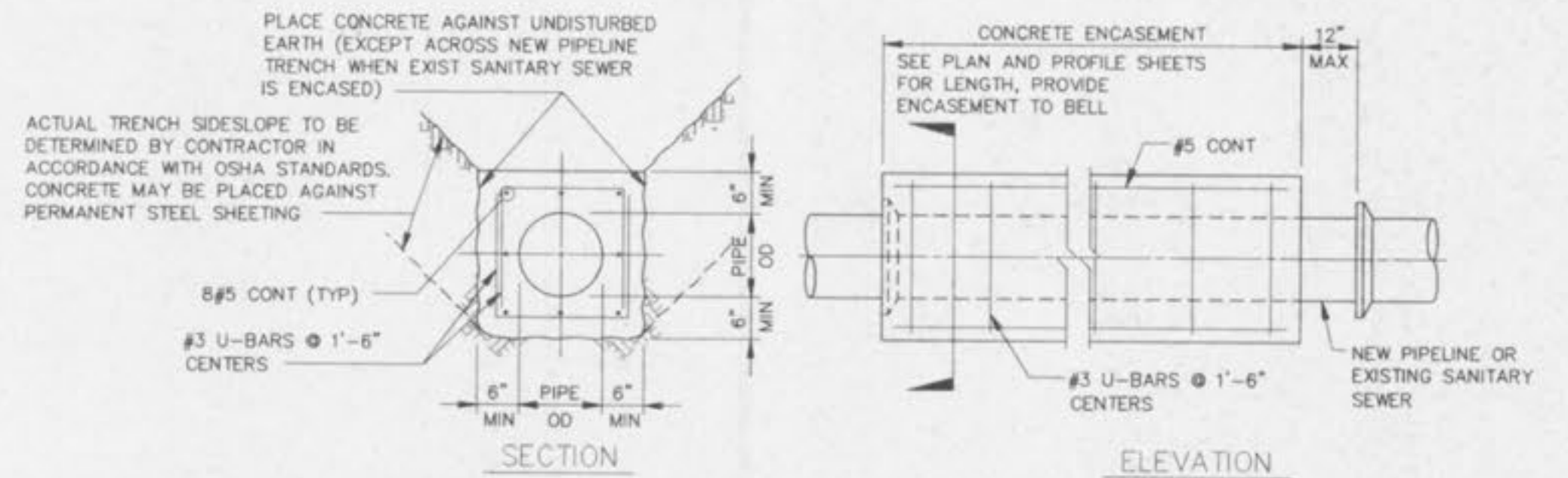
STREET TRENCHING DETAIL AND CROSSING SECTION

NO SCALE



JOINT BONDING OF STEEL PIPE ADAPTERS FOR PCCP ALTERNATIVE

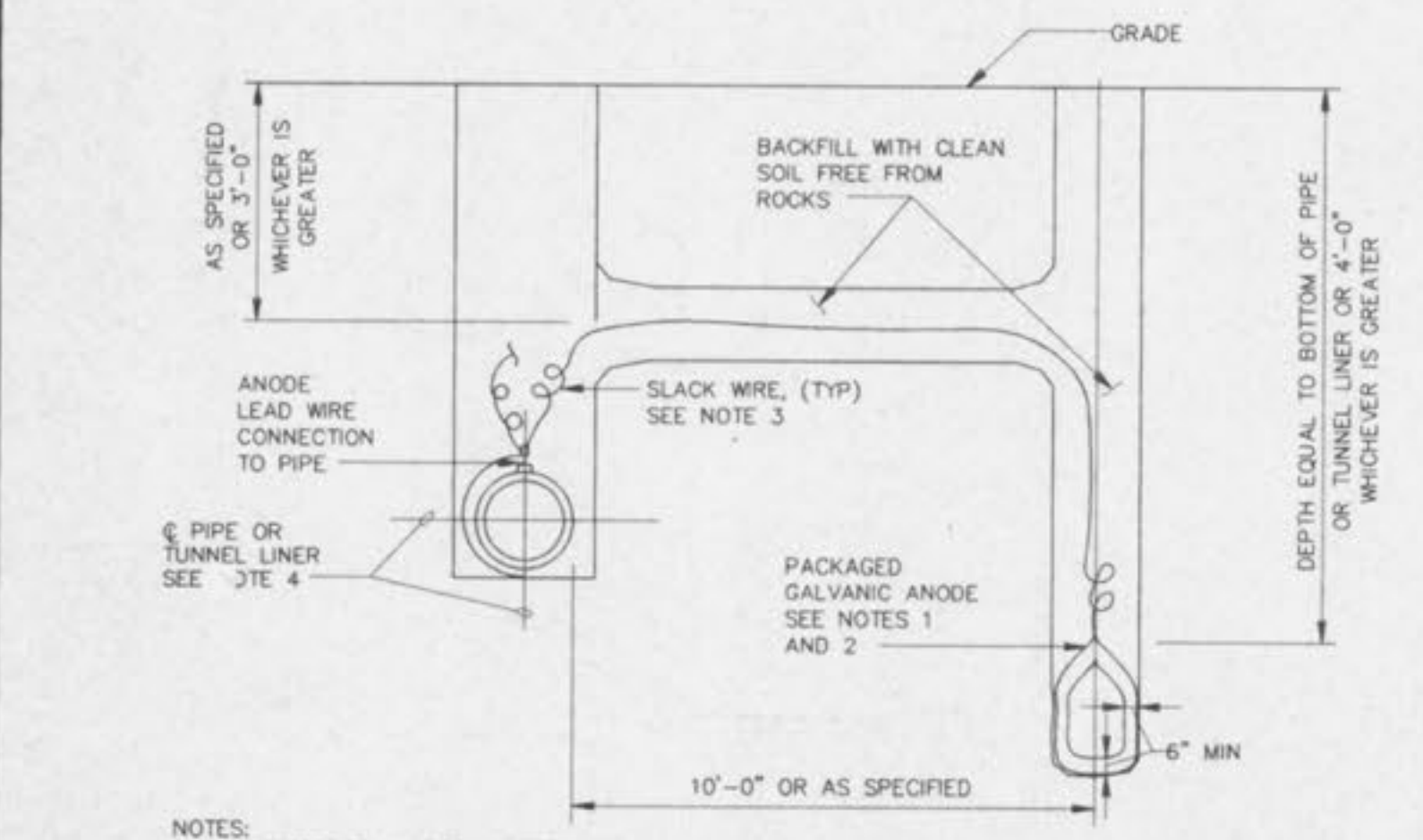
NO SCALE



CONCRETE ENCASEMENT

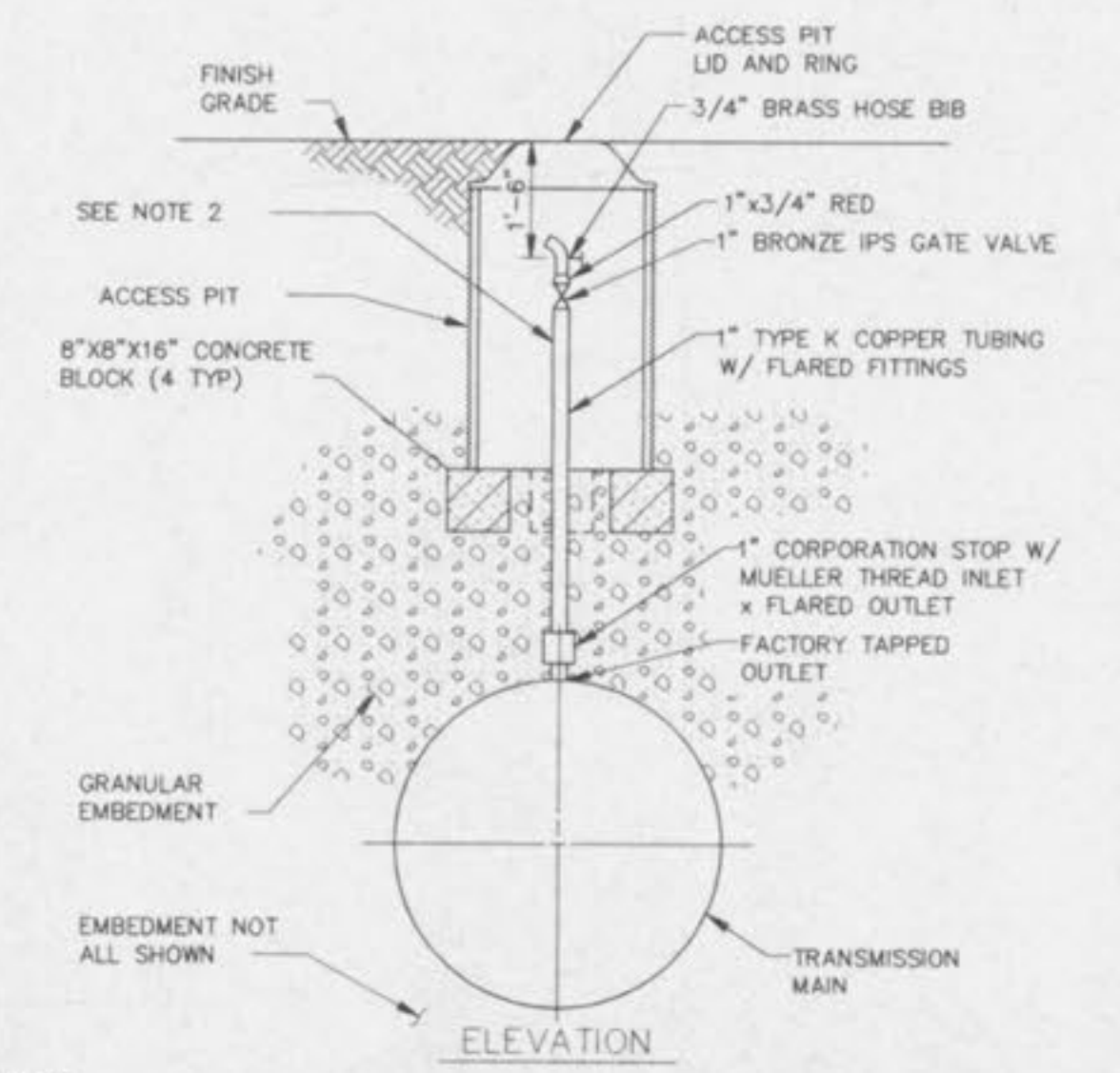
NO SCALE

- NOTES:
1. CONTRACTOR TO OBTAIN RIGHT-OF-WAY CONSTRUCTION UTILITY PERMIT FROM THE JOHNSON COUNTY KANSAS PUBLIC WORKS DEPARTMENT AND NOTIFY THEM FOR INSPECTION PRIOR TO ANY REPAIRS. SEE APPENDIX C OF THE SPECIFICATIONS FOR COPY OF UTILITY PERMIT FORM.
 2. ACTUAL TRENCH SIDESLOPE TO BE DETERMINED BY CONTRACTOR IN ACCORDANCE WITH OSHA STANDARDS.
 3. SEE PLAN SHEETS FOR LOCATION OF TRANSMISSION MAIN WITHIN STREET AND ROADWAYS.
 4. THE DIMENSION OF THE GRANULAR EMBEDMENT ABOVE THE TOP OF THE TRANSMISSION MAIN SHALL BE 1/8 TIMES COVER, 6\"/>



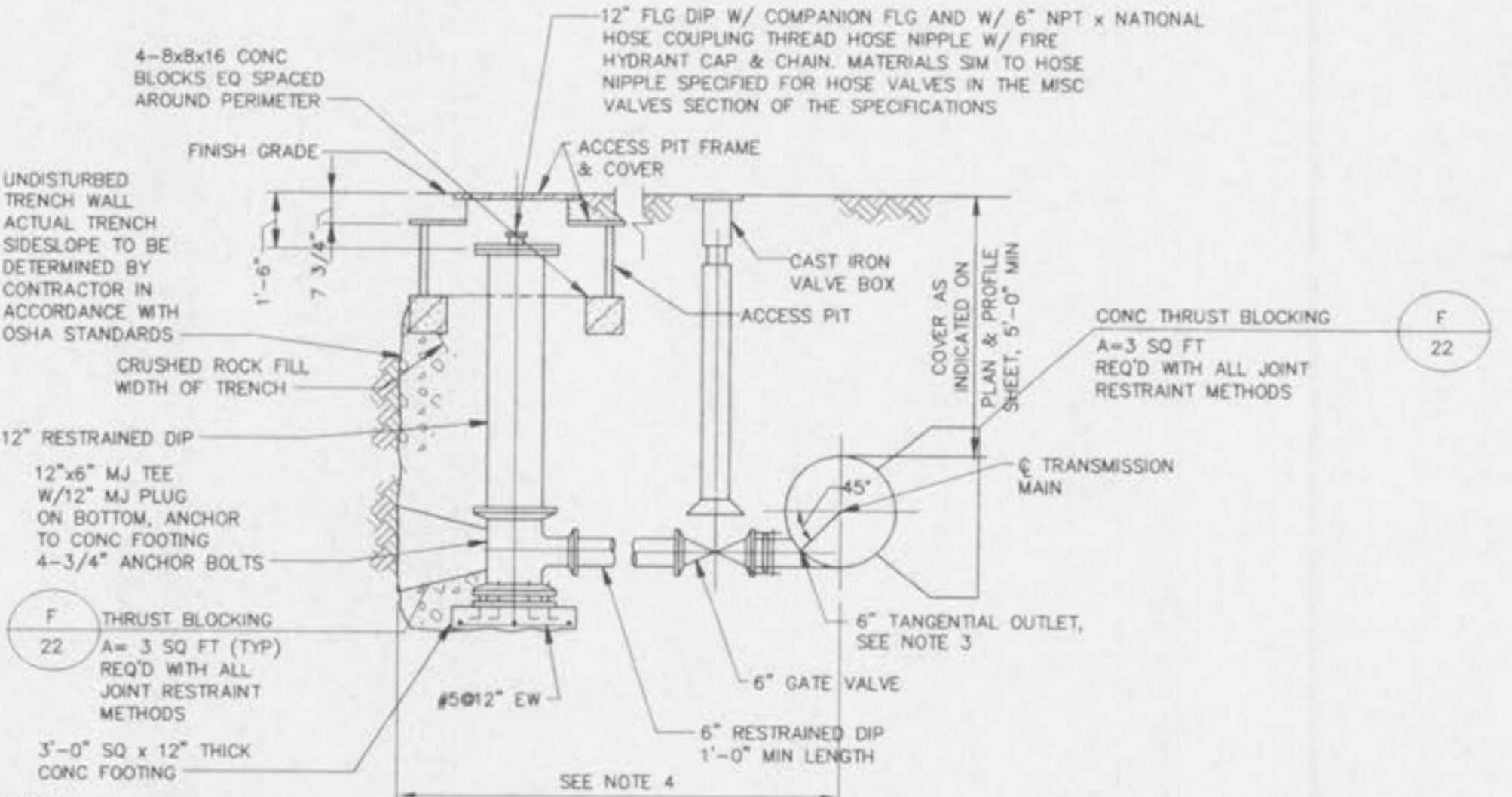
ANODE INSTALLATION FOR STEEL PIPE ADAPTERS FOR PCCP ALTERNATIVE AND FOR TUNNEL LINERS

NO SCALE



MANUAL AIR RELEASE VALVE ASSEMBLY

NO SCALE



BLOWOFF FACILITY

NO SCALE

- NOTES:
1. ANODE SHALL BE LOWERED INTO HOLES WITH A ROPE. ANODE SHALL NOT BE SUSPENDED BY THE LEAD WIRE.
 2. AT LEAST 5 GALLONS OF WATER SHALL BE POURED OVER THE ANODE BEFORE BACKFILLING.
 3. ALL LEAD WIRES SHALL BE INSTALLED WITH A MINIMUM OF 18 INCHES OF SLACK IN EACH PLACE INDICATED TO PREVENT BREAKAGE OF WIRE DUE TO BACKFILL SETTLEMENT.
 4. A SACRIFICIAL ANODE IS TO BE INSTALLED AT EACH END OF TUNNEL LINER. WHEN THE TRANS MAIN IS PCCP, AN ANODE IS ALSO TO BE INSTALLED ON THE PCCP AT EACH END OF THE TUNNEL LINER.

- NOTES:
1. SEE PLAN AND PROFILE SHEETS FOR LOCATIONS OF MANUAL AIR RELEASE VALVE ASSEMBLIES. WHERE THE TRANSMISSION MAIN IS UNDER PAVEMENT, MANUAL AIR RELEASE VALVE ASSEMBLY IS TO BE INSTALLED REMOTE FROM TRANSMISSION MAIN AS DETERMINED IN THE FIELD BY THE ENGINEER BASED UPON THE CONDITIONS ENCOUNTERED.
 2. EXPOSED PIPING, FITTINGS, AND VALVES IN ACCESS PIT TO BE WRAPPED WITH 1\"/>

- NOTES:
1. SEE PLAN & PROFILE SHEETS FOR APPROXIMATE LOCATION AND ORIENTATION OF BLOWOFF FACILITY. PRECISE LOCATION OF OUTLET, RISER PIPE, AND ACCESS PIT IS TO BE DETERMINED IN THE FIELD BY THE ENGINEER BASED UPON THE CONDITIONS ENCOUNTERED.
 2. ALL JOINTS TO BE RESTRAINED.
 3. AT THE OPTION OF THE CONTRACTOR, THE VALVE CONNECTION TO THE TANGENTIAL OUTLET MAY BE MADE BY ONE OF THE FOLLOWING METHODS: A) A TYTON JOINT GATE VALVE AND FIELD LOCK RESTRAINED PUSH-ON JOINT, B) A MJ GATE VALVE AND GRIP RING PIPE RESTRAINER BY ROMAC INDUSTRIES, INC., C) A MJ GATE VALVE AND A PLAIN END OUTLET WITH A WELDED GLAND AND ANCHORED COUPLING.
 4. SEE PLAN FOR MAXIMUM DISTANCE FROM TRANSMISSION MAIN TO PERMANENT EASEMENT. IF BLOWOFF FACILITY CANNOT BE INSTALLED WITHIN THE MAXIMUM DISTANCE, ADD A 90\"/>

PICKETT RAY & SILVER
 CIVIL ENGINEERS
 PLANNERS
 LAND SURVEYORS
 333 Mid Rivers Mall Drive
 St. Peters, MO 63376
 Phone (636) 397-1211
 Fax (636) 397-1104

HAMPTON WOODS
 CONSTRUCTION DETAILS
 Prepared For:
SUMMIT POINTE L.C.
 239 FOX HILL ROAD
 ST. CHARLES, MO. 63301
 636-940-9300

NO.	DATE	REV.	PER CITY OF OF FALCON
1	07-31-02	REV.	PER CITY OF OF FALCON
2	08-18-02	REV.	PER CITY OF OF FALCON
3	06-28-03	REV.	PER CITY OF OF FALCON

ENGINEERS AUTHENTICATION
 The responsibility for professional engineering liability on this project is hereby limited to the set of plans authenticated by the seal, signature, and date hereunder attached. Responsibility is disclaimed for all other engineering plans involved in this project and specifically excludes revisions after this date unless reauthenticated.

PICKETT RAY & SILVER, INC.
 HAROLD J. BARTON
 NUMBER E-17751
 PROFESSIONAL ENGINEER

DRAWN	DATE
ABK	MAY, 2002
CHECKED	DATE
D.W.D.	MAY, 2002

PROJECT # 95067.SUPO.OOR
 TASK # 4 FIELD BOOK 806