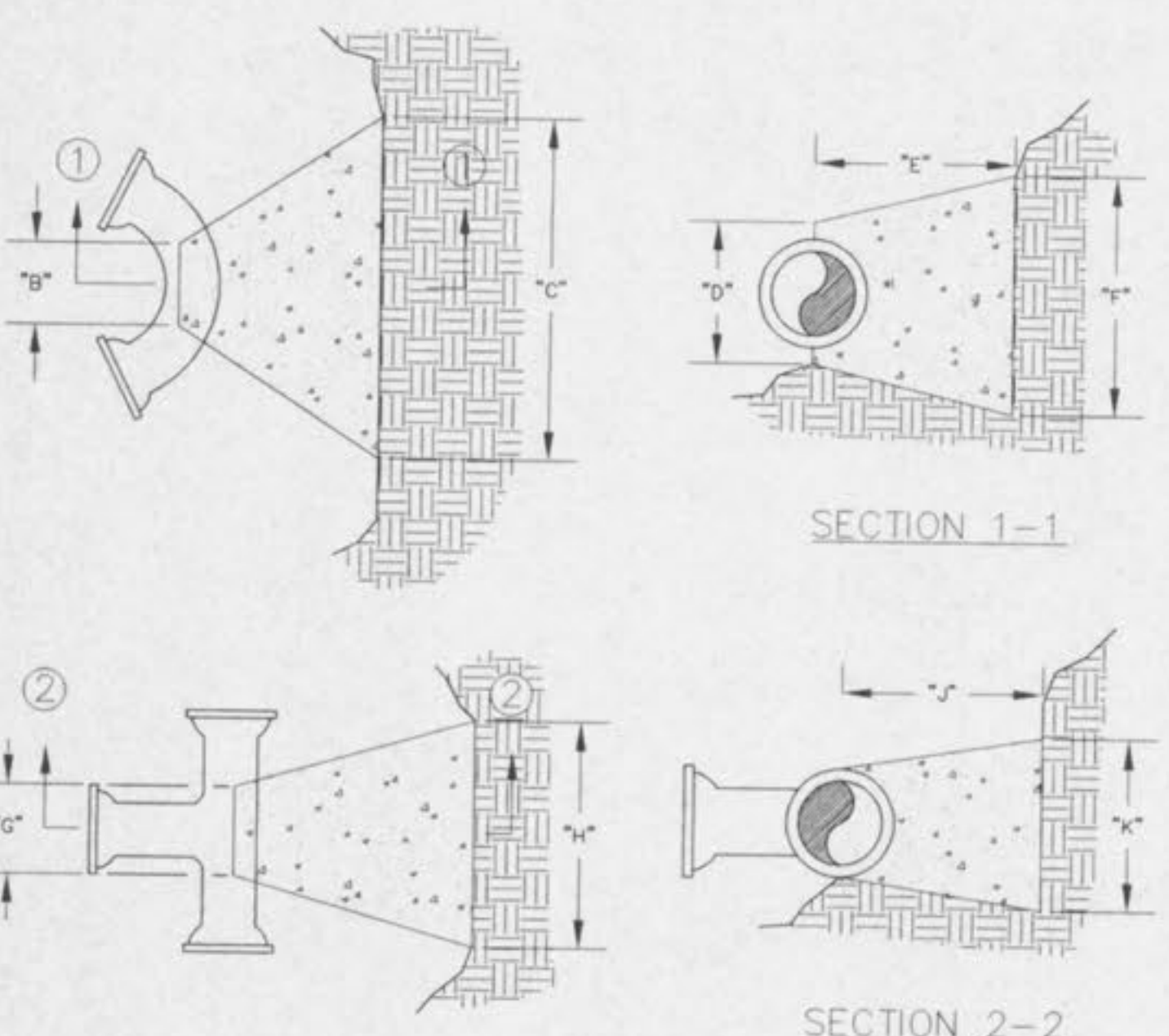


BLOW-OFF HYDRANTS SHALL BE NON-FREEZING, SELF DRAINING TYPE, WITH AN OVERALL LENGTH OF 6\"/>



BENDS	"B"	"C"	"D"	"E"	"F"
6"-11 1/4"	8"	15"	12"	24"	10"
6"-22 1/2"	8"	19"	12"	24"	13"
6"-45"	8"	30"	12"	24"	14"
6"-90"	8"	30"	12"	24"	27"
8"-11 1/4"	8"	20"	12"	24"	10"
8"-22 1/2"	8"	22"	12"	24"	17"
8"-45"	8"	30"	12"	24"	24"
8"-90"	8"	38"	12"	24"	36"

TEES	"Q"	"H"	"J"	"K"
6"x8"x6"	12"	24"	24"	18"
8"x8"x6"	12"	24"	24"	18"
8"x8"x8"	12"	24"	24"	24"
12"x12"x6"	12"	24"	24"	18"
12"x12"x8"	12"	24"	24"	24"
12"x12"x12"	12"	36"	24"	36"

CUBIC FEET OF CONCRETE REQUIRED	BEND	11 1/4"	22 1/2"	45"	90"
6"	1.7	2.4	3.5	5.5	
8"	2.1	3.1	5.0	8.5	
12"	3.7	5.9	9.7	17.5	

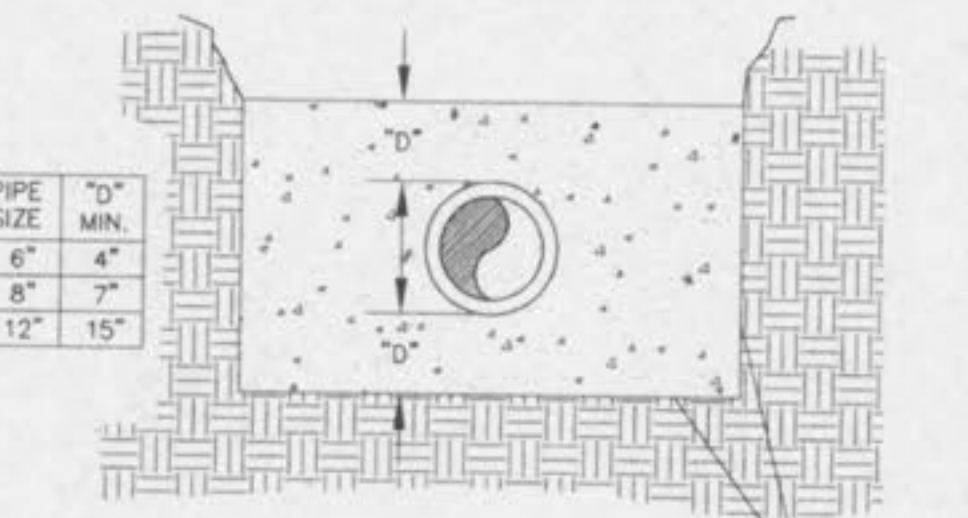
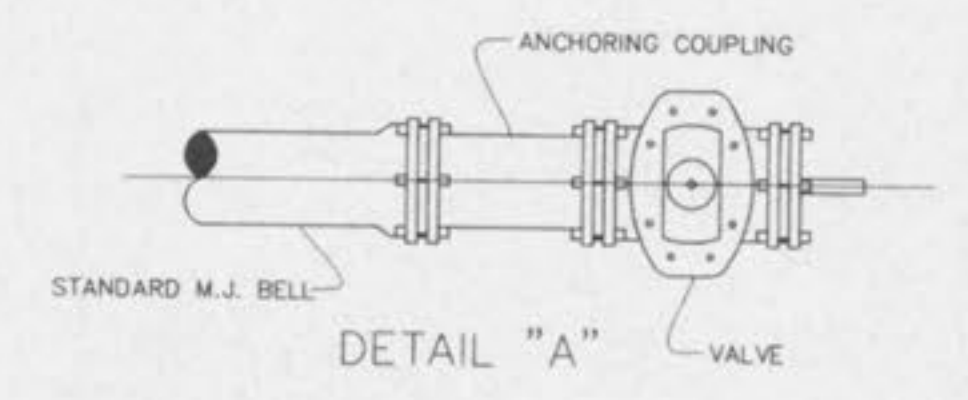
TEE X	6"	8"	12"	PLUG
6"	40	~	~	4.0
8"	40	5.0	~	5.0
12"	40	5.5	10.5	10.5

NOTES:
1. 2" & 4" FITTINGS EQUIVALENT TO 6" FITTINGS.
2. TAPPING SLEEVES TO HAVE BACKING BLOCKS SAME SIZE AS REQUIRED FOR TEES.

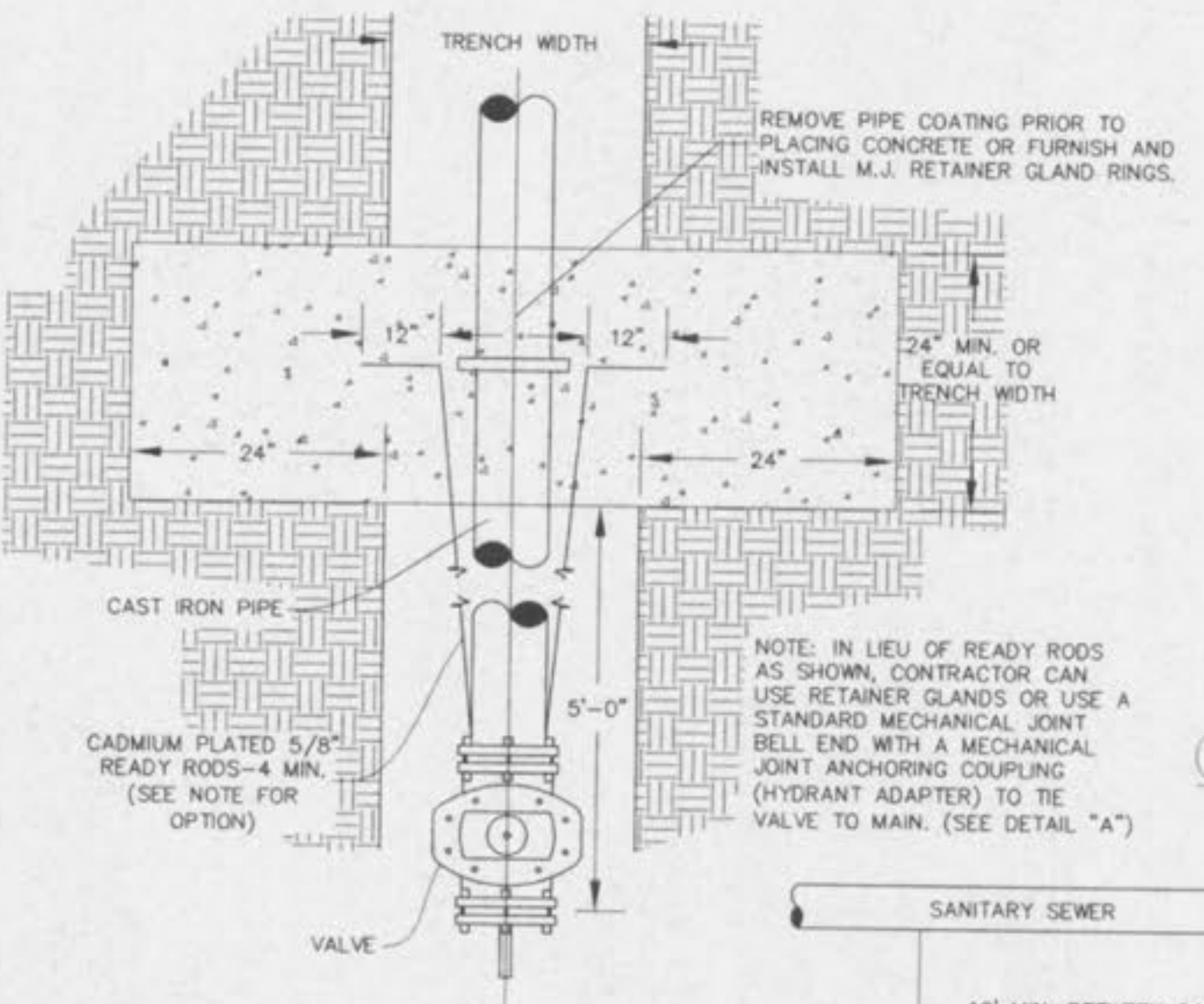
FLUSHING ASSEMBLY NOT TO SCALE

WATER VALVE DETAIL NOT TO SCALE

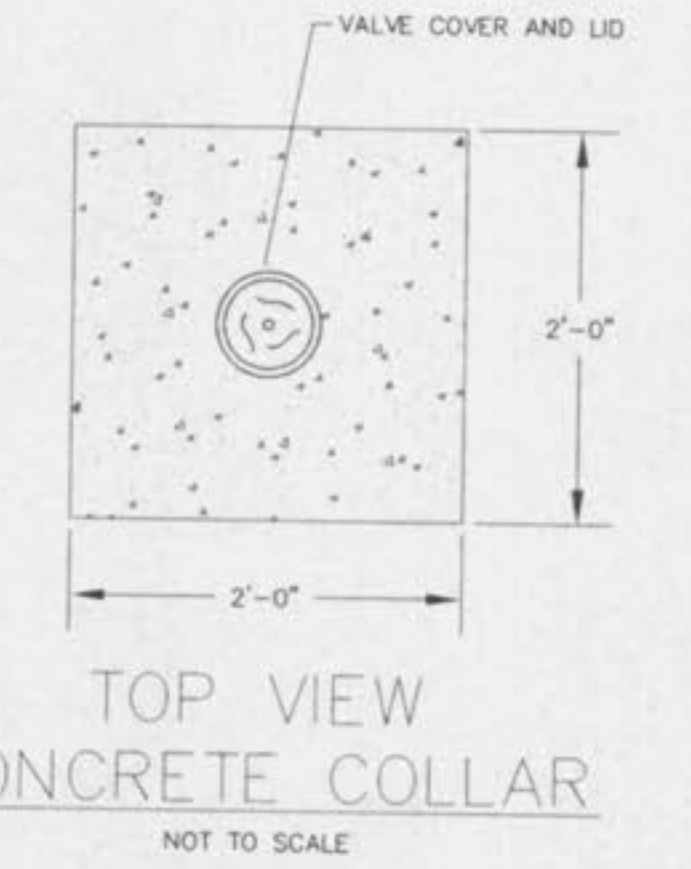
BLOW-OFF HYDRANT NOT TO SCALE



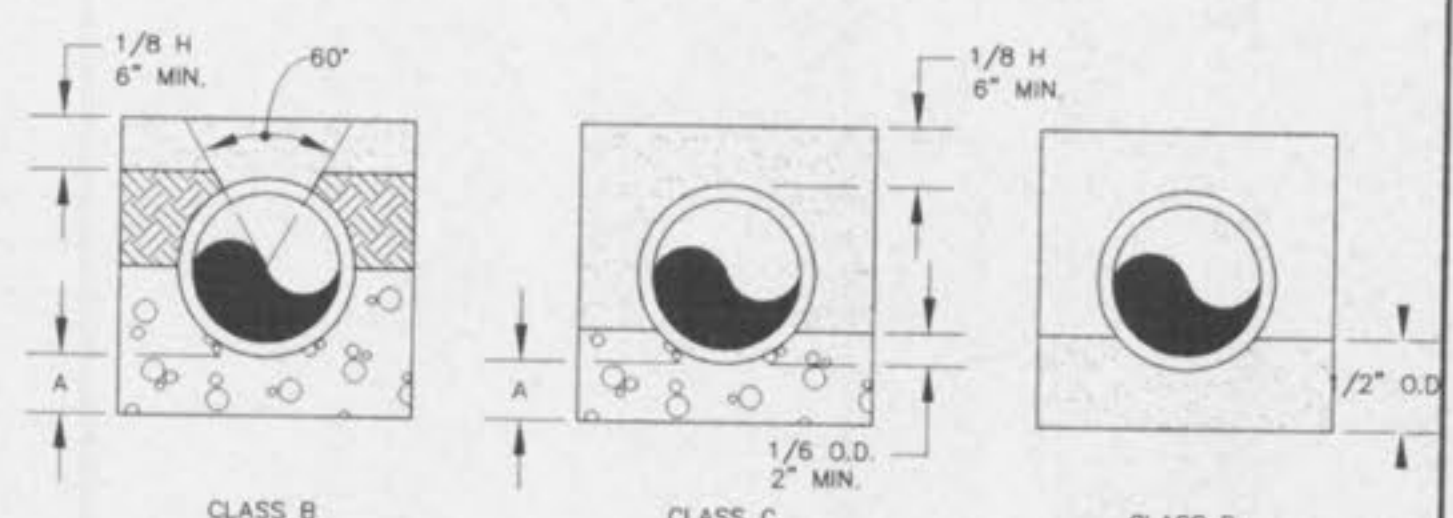
STRADDLE BLOCK DETAIL NOT TO SCALE



TYPICAL WATER AND SEWER SEPARATION NOT TO SCALE



TOP VIEW CONCRETE COLLAR NOT TO SCALE



LEGEND:
O.D. - NOMINAL PIPE SIZE
O.D. - OUTSIDE DIAMETER OF PIPE
H - COVER ABOVE TOP OF PIPE
A - EMBEDMENT BELOW PIPE (SEE TABLE)

CLASS	MIN. SOIL	MIN. ROCK
CLASS B	3"	6"
CLASS C	3"	6"
CLASS D	3"	6"

GRANULAR BEDDING SHALL BE CRUSHED ROCK OR PEA GRAVEL WITH NOT LESS THAN 95% PASSING 1/2" (95% PASSING 3/4" FOR 30" AND LARGER PIPE) AND NOT LESS THAN 95% RETAINED ON #4; TO BE PLACED IN NOT MORE THAN 6" LAYERS AND COMPACTED BY SLICING WITH A SHOVEL OR VIBRATING.

COMPACTED BACKFILL SHALL BE FINELY DIVIDED JOB EXCAVATED MATERIAL FREE FROM DEBRIS, ORGANIC MATERIAL AND STONES, PLACED IN UNIFORM LAYERS NOT MORE THAN 6" THICK, COMPACTED TO 95% MAXIMUM DENSITY AS DETERMINED BY A.S.T. D698, OR GRADED AGGREGATE. GRANULAR BACKFILL MATERIAL MAY BE SUBSTITUTED FOR ALL OR PART OF COMPACTED BACKFILL.

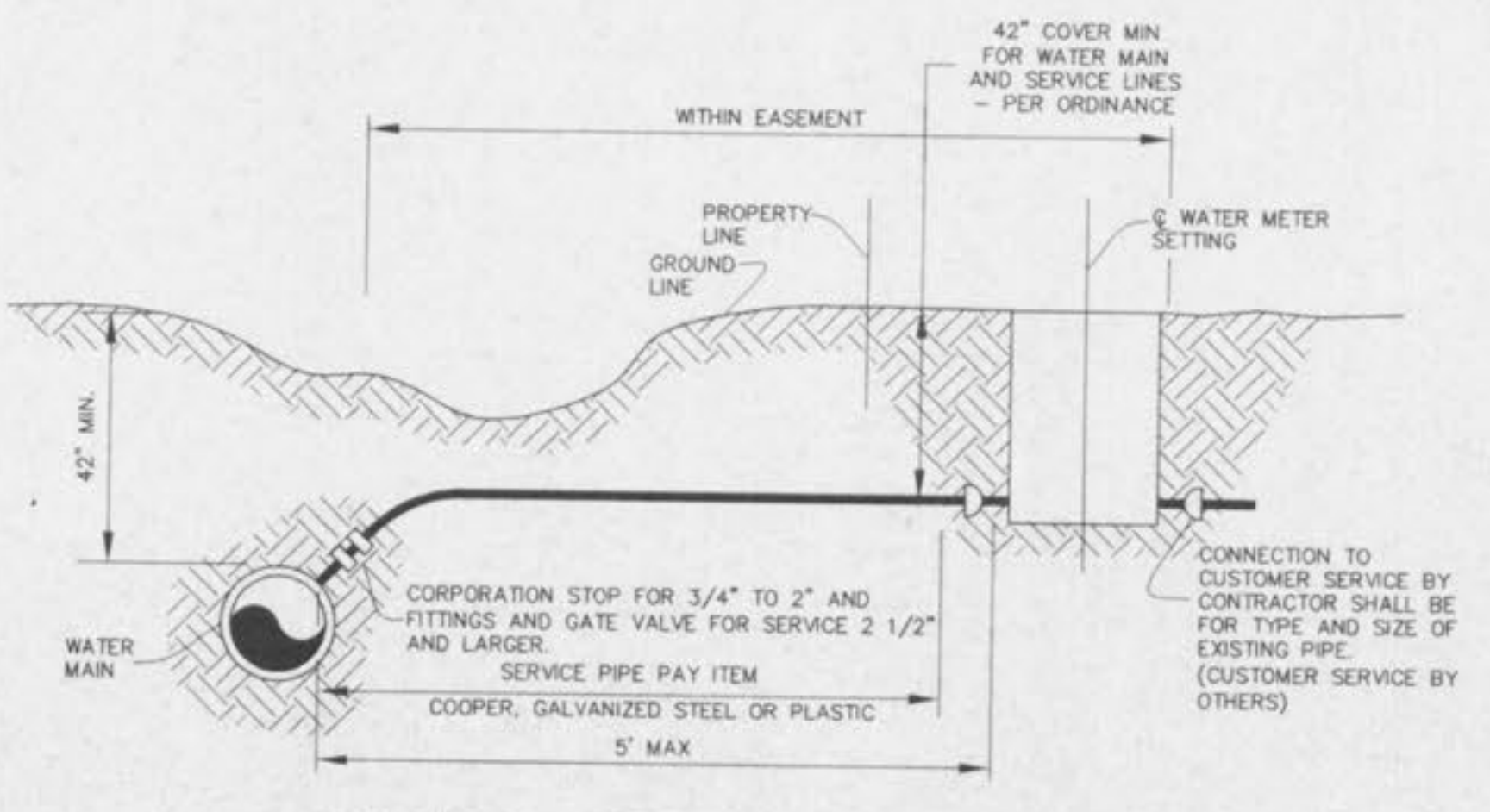
TAMPED BACKFILL SHALL BE FINELY DIVIDED JOB EXCAVATED MATERIAL FREE FROM DEBRIS, ORGANIC MATERIAL AND STONES, HAND PLACED IN UNIFORM LAYERS NOT MORE THAN 8" THICK AND TAMPED AROUND CONDUIT PIPE. GRANULAR BACKFILL MATERIAL MAY BE SUBSTITUTED FOR ALL OR PART OF TAMPED BACKFILL.

TRENCH BACKFILL SHALL BE AS REQUIRED IN THE "LAYING AND BACKFILL" SECTION OF THE DETAILED SPECIFICATIONS.

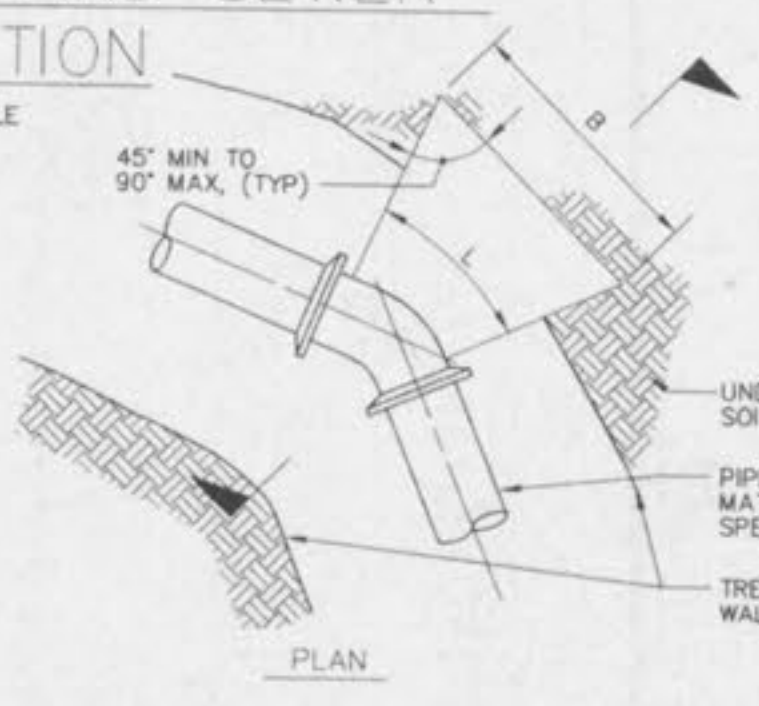
EMBEDMENT THE TYPE OF EMBEDMENT TO BE USED SHALL BE AS SPECIFIED IN THE PLANS AND SPECIFICATIONS.

TRACER WIRE REQUIRED ON ALL WATER MAINS

WATER MAIN EMBEDMENT NOT TO SCALE



TYPICAL SERVICE ASSEMBLY NOT TO SCALE



- NOTES:
1. AREA OF BLOCK, A = Bxh. BLOCK AREAS ARE SHOWN ON GENERAL LAYOUT OR TABLE.
2. B = h = V/A, EXCEPT WHERE TOP OF BLOCK IS WITHIN 2 FEET FROM GROUND SURFACE, THEN B = A/h.
3. MINIMUM BLOCK DIMENSION (B & h) SHALL BE AT LEAST O.D. OF PIPE OR 1 FOOT FOR PIPE O.D. 12" OR LESS.
4. THE BOTTOM OF THE BLOCK SHALL EXTEND AT LEAST TO THE BOTTOM OF THE TRENCH IN ALL CASES.
5. L=FITTING LENGTH MINUS CLEARANCE FOR BELLS.
6. DETAIL IS SHOWN FOR CAST IRON PIPE; DETAIL IS SIMILAR FOR OTHER TYPES OF PIPE.
7. DIMENSIONS FOR THRUST BLOCKS FOR FIRE HYDRANT ASSEMBLY ARE SHOWN FIRE HYDRANT ASSEMBLY DETAIL.

SIZE	BEND	THRUST AREA	B	H
16"	11 1/2"	4 SF	2'	2'
16"	22 1/2"	8 SF	2.8'	2.8'

CONCRETE THRUST BLOCKING NOT TO SCALE

PICKETT RAY & SILVER
CIVIL ENGINEERS
PLANNERS
LAND SURVEYORS
333 Mid Rivers Mall Drive
St. Peters, MO 63376
Phone (636) 397-1211
Fax (636) 397-1104

HAMPTON WOODS
CONSTRUCTION DETAILS
Prepared For:
SUMMIT POINTE L.C.
239 FOX HILL ROAD
ST. CHARLES, MO 63301
636-945-9300

REV. NO.	DATE	BY	REV. PER CITY OF FALLON
1	07-28-02		REV. PER CITY OF FALLON
2	08-16-02		REV. PER CITY OF FALLON
3	08-26-02		REV. PER CITY OF FALLON

ENGINEERS AUTHENTICATION
The responsibility for professional engineering liability on this project is hereby limited to the set of plans authorized by the seal, signature, and date hereunder attached. Responsibility is disclaimed for all other engineering plans involved in this project and specifically excludes revisions after this date unless reauthorized.
PICKETT RAY & SILVER, INC.
STATE OF MISSOURI
HAROLD J. BARTON
NUMBER
E-17751
REGISTERED PROFESSIONAL ENGINEER

DRAWN	DATE
ABK	MAY, 2002
CHECKED	DATE
D.W.D.	MAY, 2002

PROJECT # 95067.SUPO.OOR
TASK # 4 FIELD BOOK 806