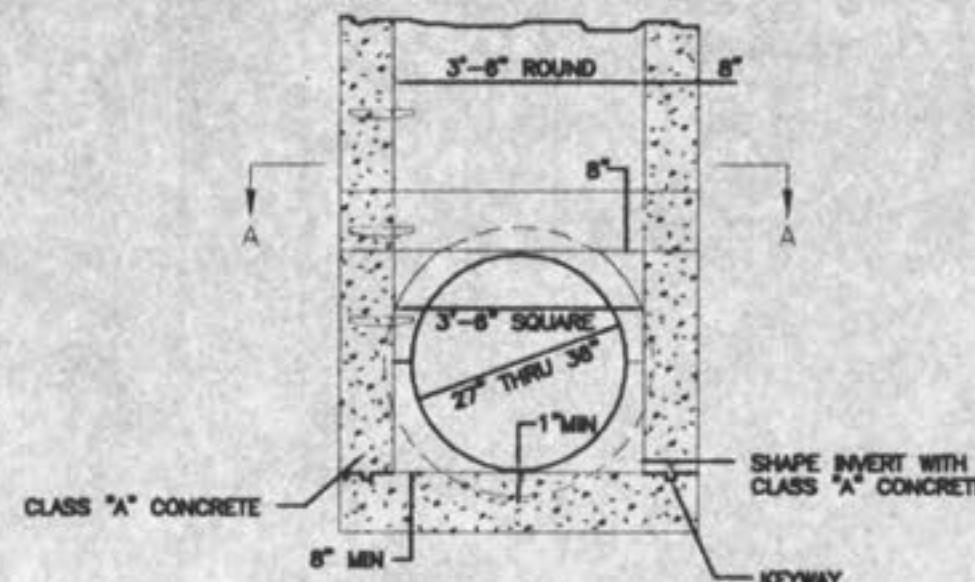


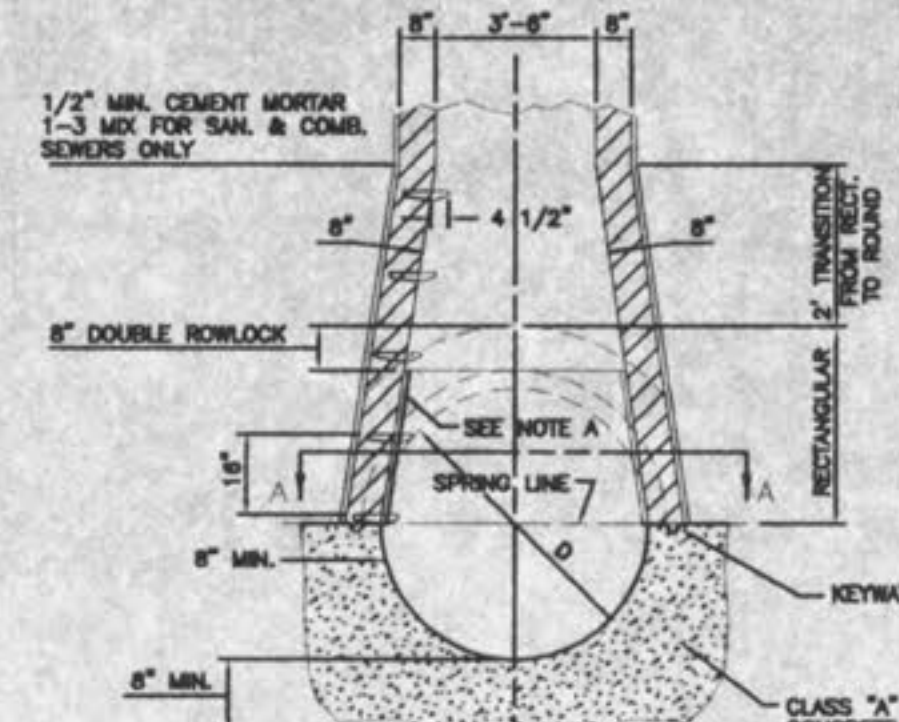
ROUND PIPE				HORIZONTAL ELLIPTICAL PIPE			
Inside Diameter of Pipe (Inches)	Payline Width of Trench (Inches)	Payline Width of Trench (Feet)	Pay-volume of Concrete Encasement (cu. ft. per ft. of pipe)	Inside Diameter of Pipe (Inches)	Payline Width of Trench (Inches)	Payline Width of Trench (Feet)	Pay-volume of Concrete Encasement (cu. ft. per ft. of pipe)
4	28	2.33	3.50				
6	28	2.33	3.46				
8	28	2.33	3.70				
10	28	2.33	3.86				
12	28	2.33	3.88				
15	32	2.67	4.80				
18	35	2.92	5.63	14 X 23	41	3.42	5.94
21	39	3.25	6.61				
24	42	3.50	7.39	19 X 30	49	4.08	7.88
27	45	3.75	8.18	22 X 34	53	4.42	8.61
30	48	4.08	9.30	24 X 38	58	4.83	9.70
33	53	4.42	10.53	27 X 42	62	5.17	10.71
36	56	4.67	11.43	28 X 45	66	5.50	11.72
39	60	5.00	12.50	32 X 48	71	5.82	13.14
42	63	5.25	13.36	34 X 53	75	6.25	14.05
48	70	5.83	15.67	38 X 60	83	6.82	16.18
54	77	6.42	18.15	43 X 68	92	7.67	18.81
60	84	7.00	20.73	48 X 78	101	8.42	21.09
66	91	7.58	23.46	53 X 83	109	9.08	24.35
72	98	8.17	26.37	58 X 91	118	9.83	27.45
78	105	8.75	29.39	63 X 98	126	10.50	30.50
84	112	9.33	32.57	68 X 106	135	11.25	33.91
90	119	9.92	35.90	72 X 113	143	11.82	36.99
96	126	10.50	39.37	77 X 121	152	12.67	40.69
102	133	11.08	42.99	82 X 128	160	13.33	44.45
108	140	11.67	46.75	87 X 136	168	14.00	47.79
114	147	12.25	50.66	92 X 143	176	14.67	51.70
120	154	12.83	54.72	97 X 151	185	15.42	56.01
126	161	13.42	58.92				
132	168	14.00	63.27	106 X 168	202	16.83	64.48
144	182	15.17	72.40	116 X 180	218	18.17	73.59

TABLE NO. 1
PAYLINE WIDTHS OF TRENCH AND
PAY-QUANTITIES OF CONCRETE



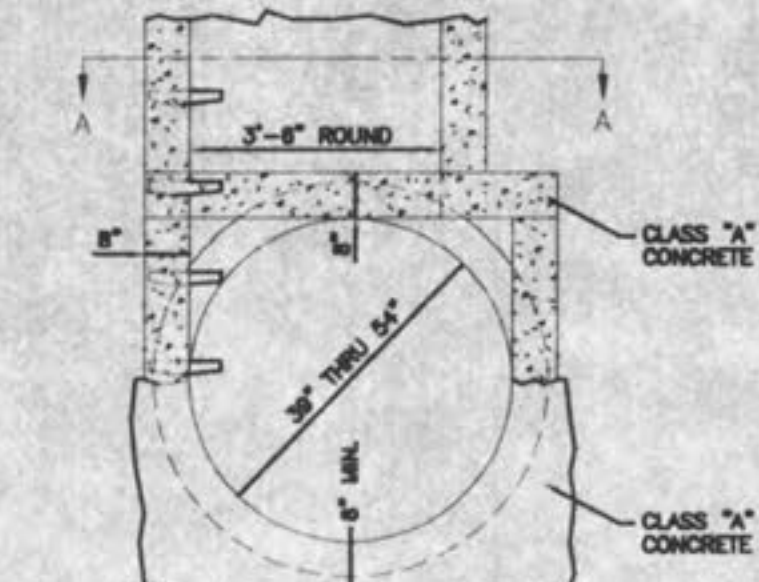
SECTION A-A

MANHOLE ON PIPE SEWER
27" THRU 36" (ALTERNATE)



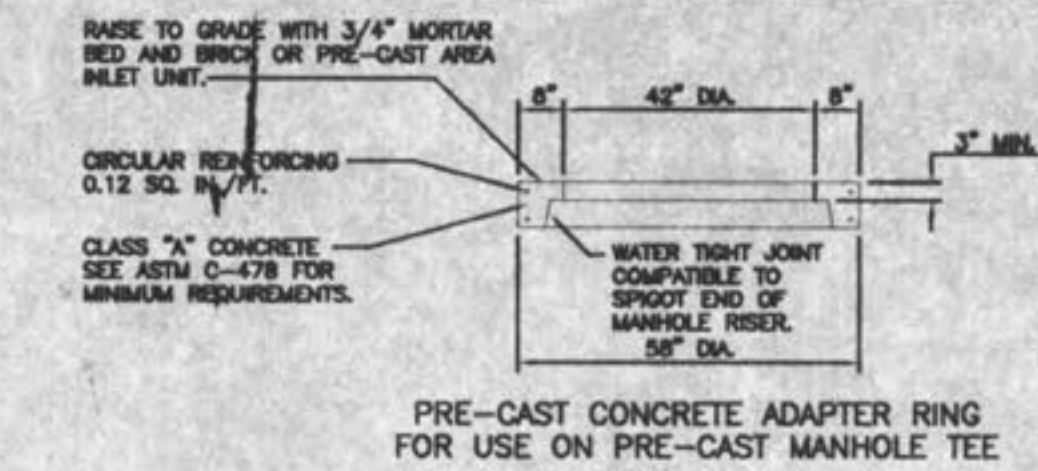
SECTION A-A

MANHOLE ON CONCRETE
PIPE SEWERS 39"
THRU 54" DIAMETER

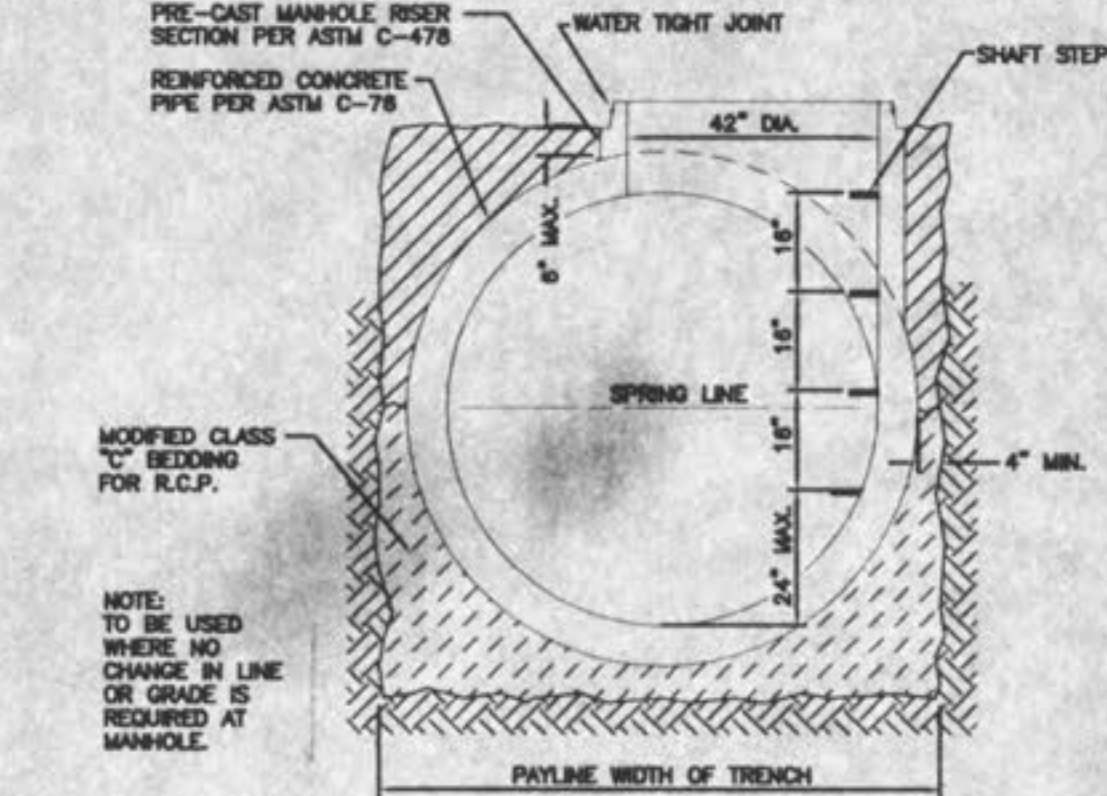


SECTION A-A

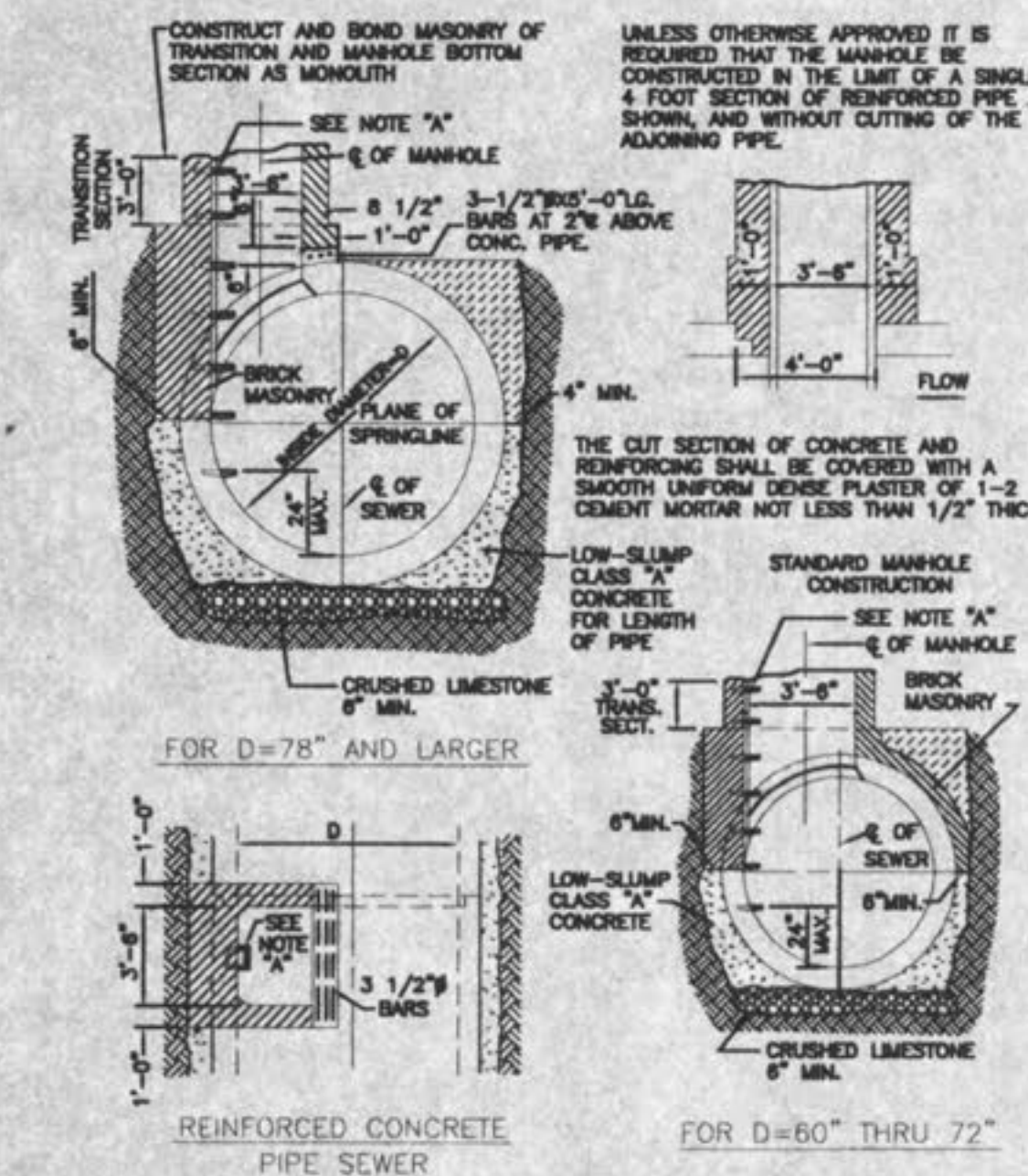
MANHOLE ON CONCRETE PIPE
39" THRU 54"
(ALTERNATE)



PRE-CAST CONCRETE ADAPTER RING
FOR USE ON PRE-CAST MANHOLE TEE



TYPICAL PRE-CAST M.H. TEE
FOR REINFORCED CONCRETE
PIPE SEWERS 48" AND
LARGER IN DIAMETER



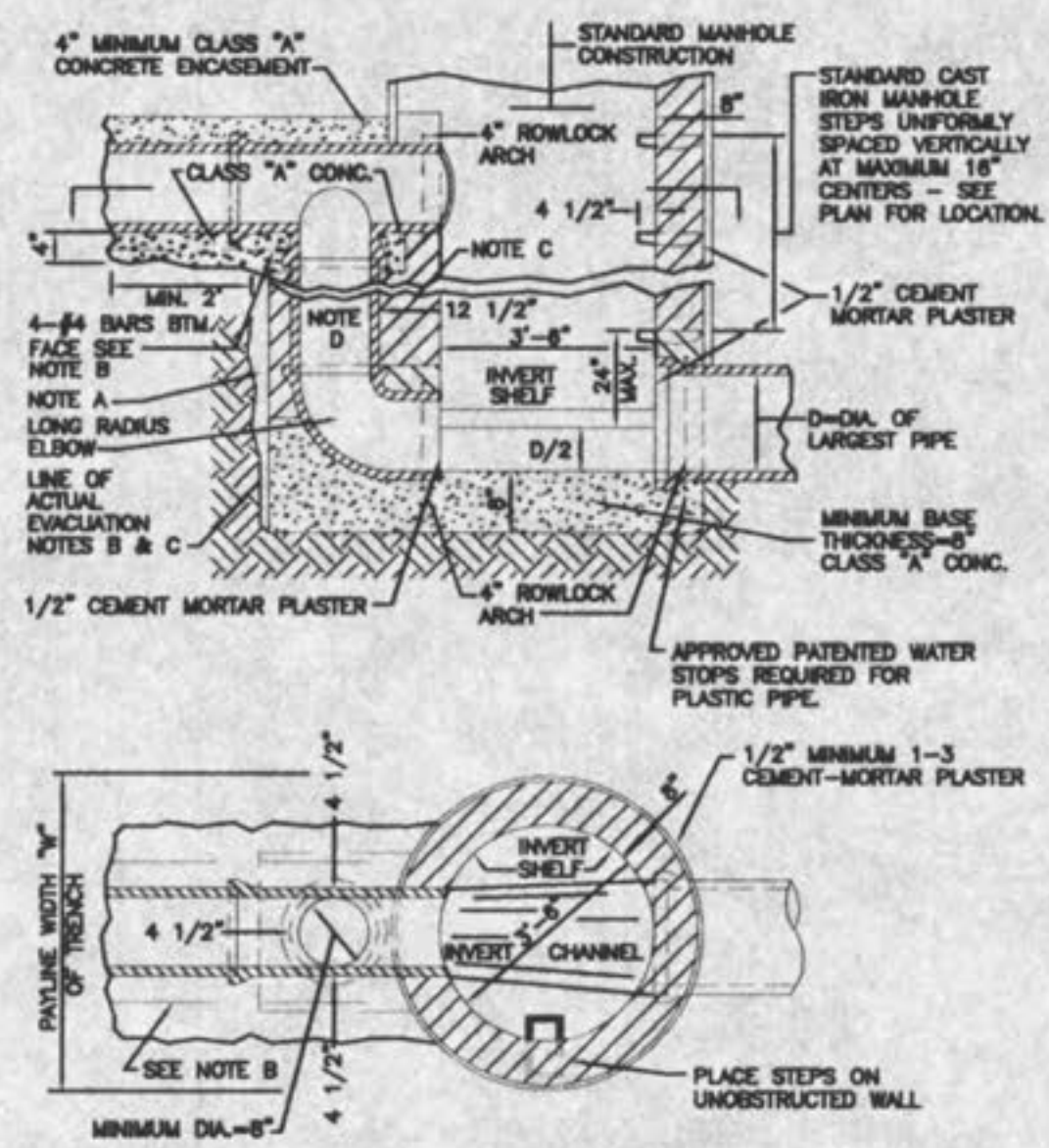
UNLESS OTHERWISE APPROVED IT IS
REQUIRED THAT THE MANHOLE BE
CONSTRUCTED IN THE LINE OF A SINGLE
4 FOOT SECTION OF REINFORCED PIPE AS
SHOWN, AND WITHOUT CUTTING OF THE
ADJOINING PIPE.

THE CUT SECTION OF CONCRETE AND
REINFORCING SHALL BE COVERED WITH A
SMOOTH UNIFORM DENSE PLASTER OF 1-2
CEMENT MORTAR NOT LESS THAN 1/2" THICK.

REINFORCED CONCRETE
PIPE SEWER

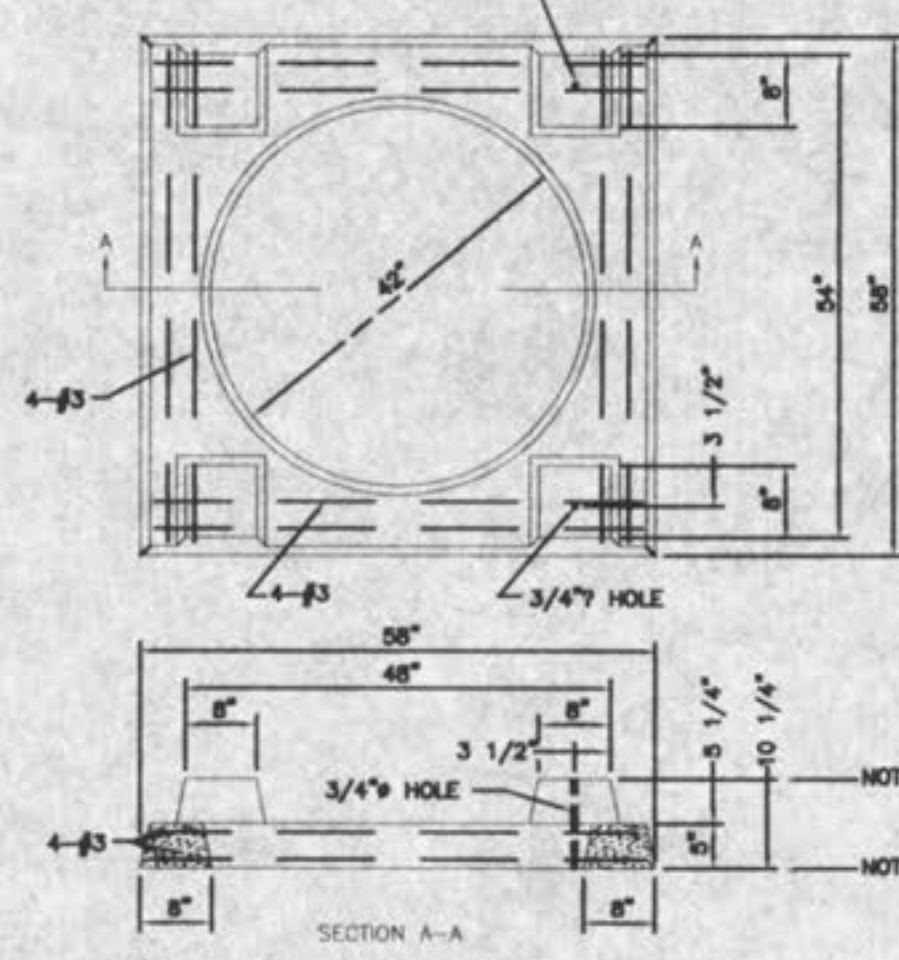
FOR D=60" THRU 72"

NOTE: A. SHAFTS STEPS SHALL BE USED & UNIFORMLY SPACED AT 16" C-C MAX.

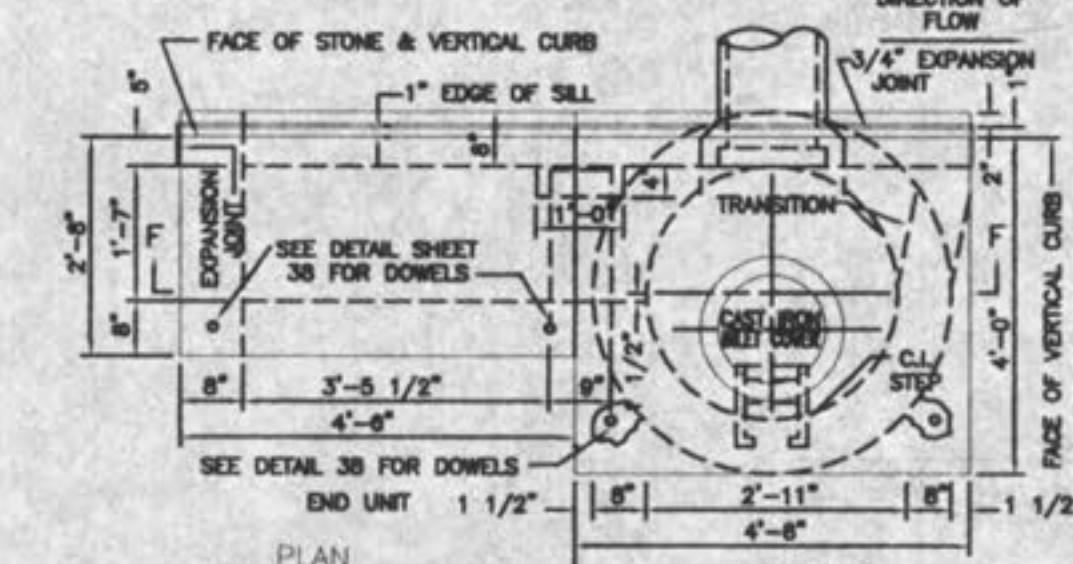


PLAN SECTION

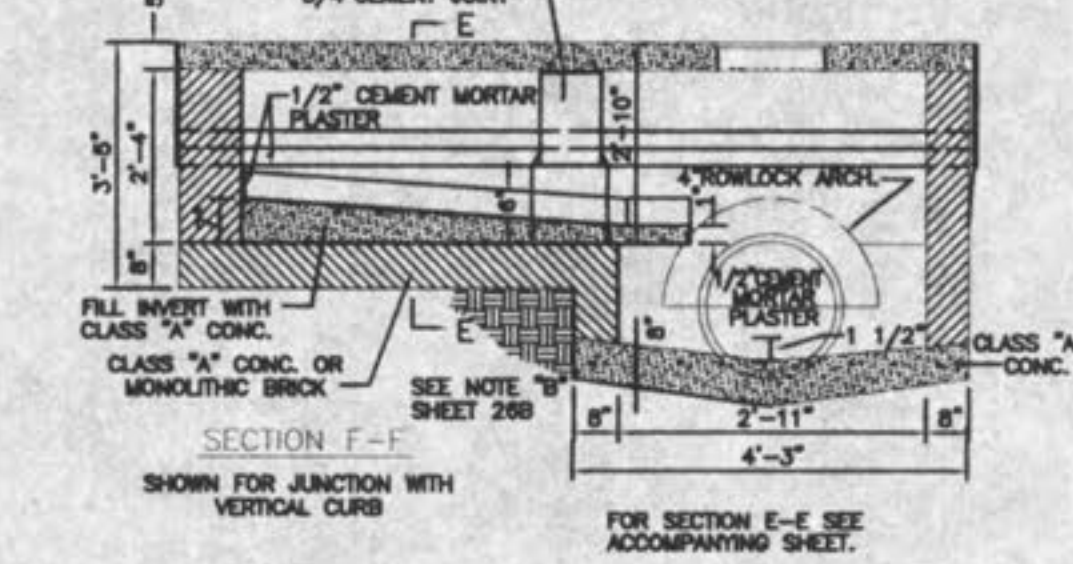
SEE ACCOMPANYING SHEET FOR NOTES.



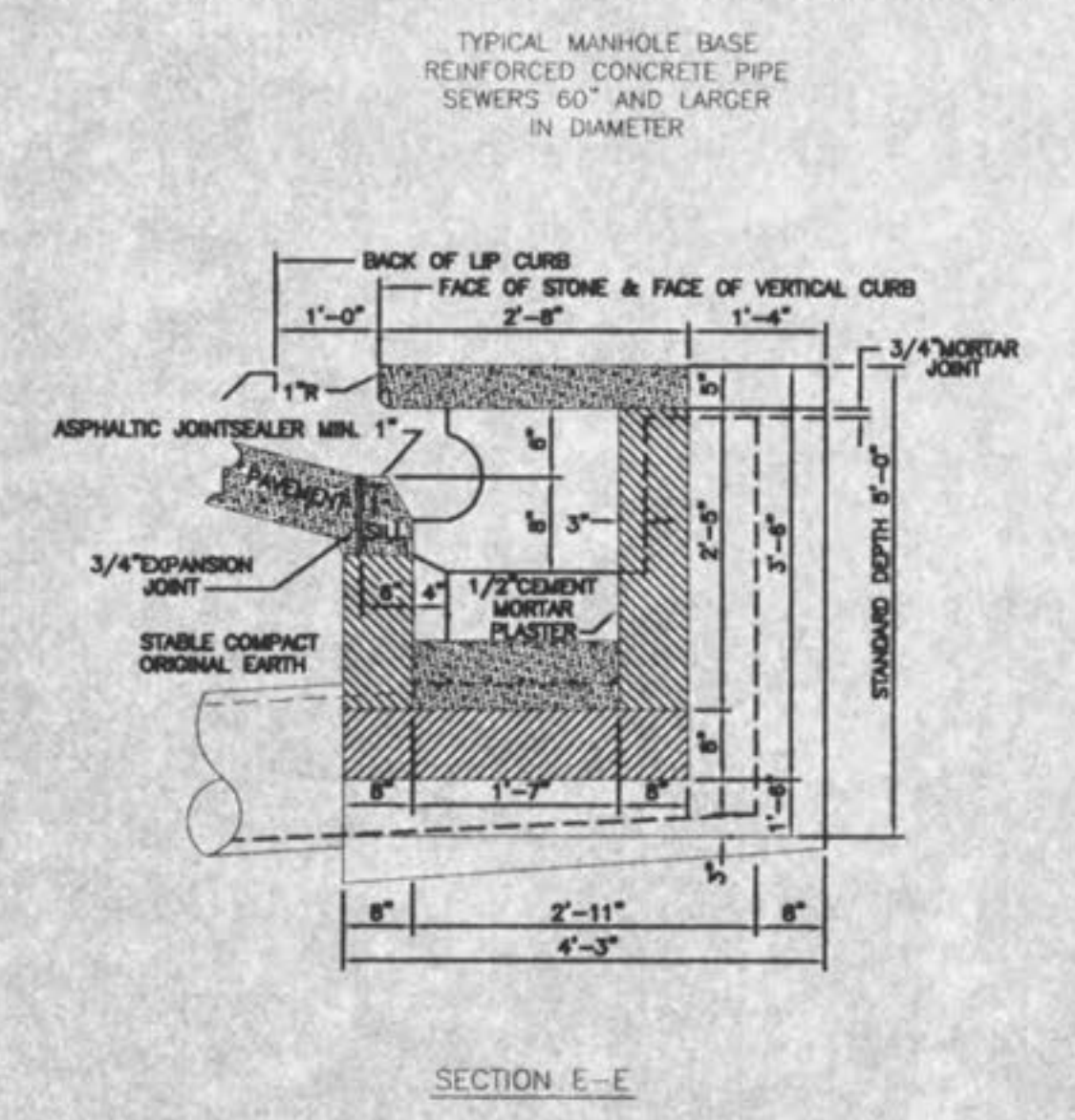
PRECAST CONCRETE UNIT
FOR
4-WAY AREA INLET



MULTIPLE
STREET INLET
BRICK CONSTRUCTION



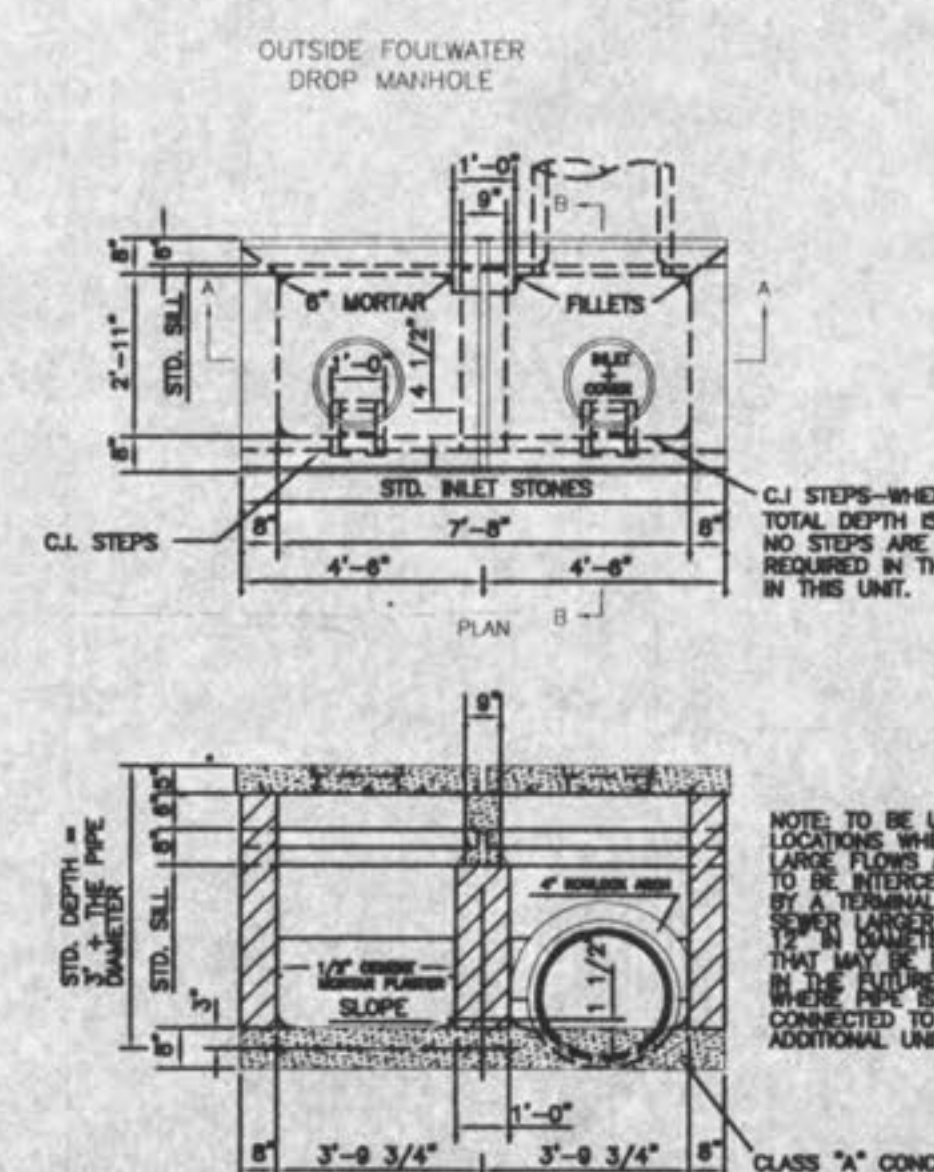
MULTIPLE
STREET INLET
BRICK CONSTRUCTION



TYPICAL MANHOLE BASE
REINFORCED CONCRETE PIPE
SEWERS 60" AND LARGER
IN DIAMETER

SECTION E-E

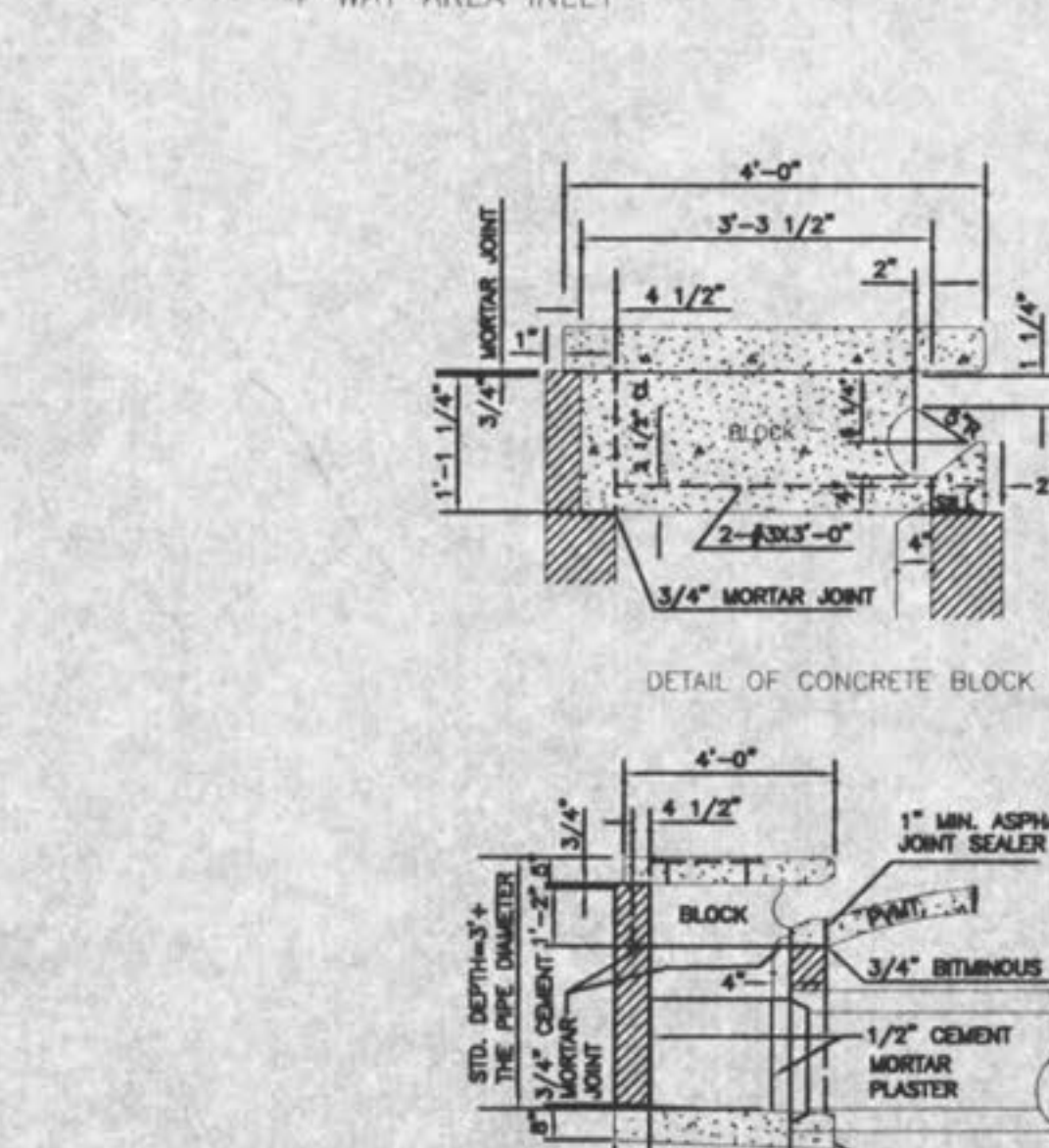
NOTES:
A. MAXIMUM DIAMETER OF DOWN-
STREAM PIPE IS 24"
B. CONSTRUCT ADDITIONAL UNITS ON
UNDISTURBED EARTH OR COMPACTED
CRUSHED LIMESTONE



OUTSIDE FOULWATER
DROP MANHOLE

SECTION A-A

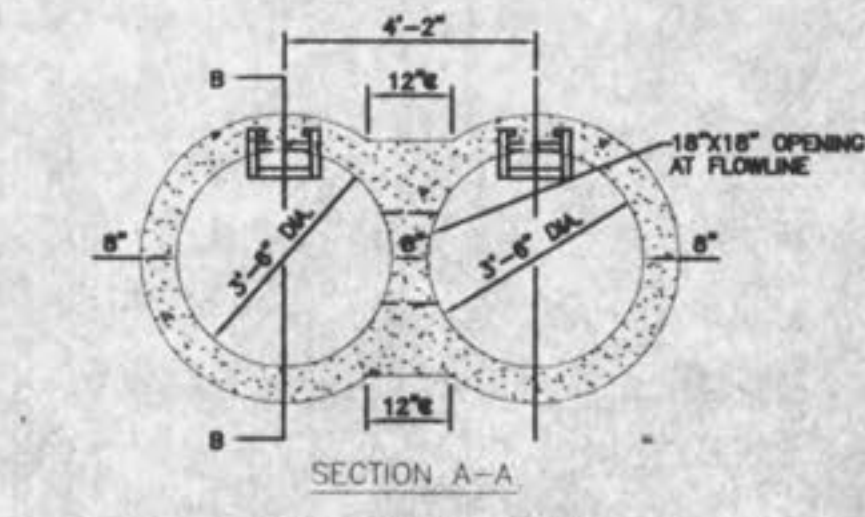
SEE ACCOMPANYING SHEET



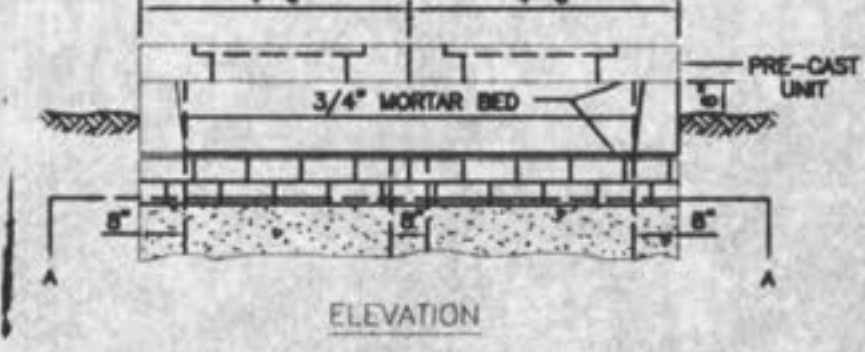
DETAIL OF CONCRETE BLOCK

NOTE: TO BE USED
AT LOCATIONS
WHERE LARGE FLOWS
ARE TO BE
INTERCEPTED BY A
TERMINAL SEWER
IN WHICH THE
INLET PIPE IS
LARGER THAN 12"
IN DIAMETER AND
MAY BE EXTENDED
IN THE FUTURE OR
CONNECTED TO
ADDITIONAL UNIT.

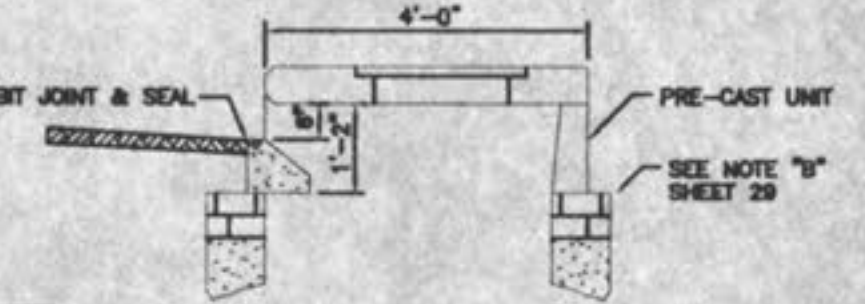
SECTION B-B



SECTION A-A



ELEVATION



SECTION B-B

CONCRETE DOUBLE
STREET INLET
W/ PRE-CAST TOP UNIT

NOTE:
TO BE USED ONLY WHEN
PRE-CAST TOP SECTION
IS AVAILABLE.

NOTE: ADD A 5/8" TRASH BAR TO
ALL CURB INLET OPENINGS

PICKETT RAY & SILVER
CIVIL ENGINEERS
PLANNERS
LAND SURVEYORS

333 Mid Rivers Mall Drive
St. Peters, MO 63376
Phone (856) 397-1211
Fax (856) 397-1104

HAMPTON WOODS
CONSTRUCTION DETAILS

Prepared For:
SUMMIT POINTE L.C.

85 FOXHILL ROAD
ST. CHARLES, MO 63041
636-940-9000

REVISIONS	NO.	DATE	REV. BY	REV. CITY	REV. CITY	REV. CITY
	1	08-27-02	REV.	PER	CITY	O'FALLON
	2	11-15-02	REV.	PER	CITY	O'FALLON

ENGINEERS AUTHENTICATION
The responsibility for professional
engineering liability on this project
is hereby limited to the set of plans
authenticated by the seal, signature,
and date hereunder attached.
Responsibility is disclaimed for all
other engineering plans involved in
this project and specifically excludes
revisions after this date unless
reauthenticated.

PICKETT, RAY & SILVER, INC.
HAROLD J. BARTON
REGISTERED PROFESSIONAL
ENGINEER
E-47734

DRAWN	ABK	DATE	MAY, 2002
CHECKED	D.W.D.	DATE	MAY, 2002
PROJECT	# 95067.SUPO.DOR	TASK #	4
		FIELD BOOK	806