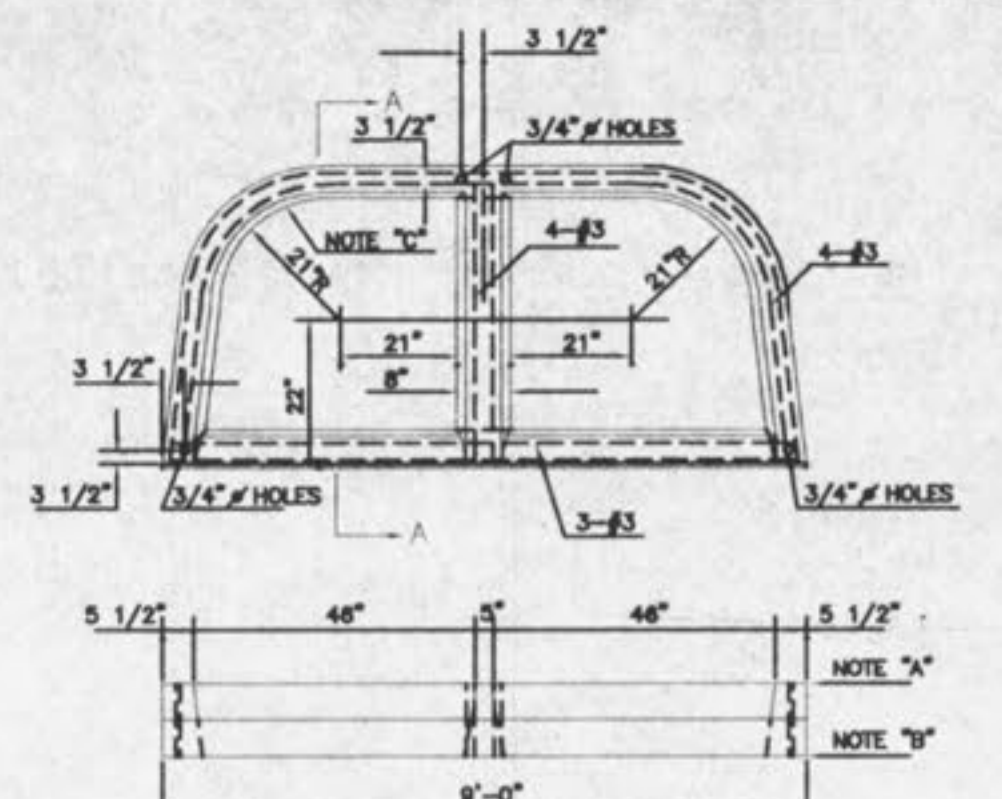
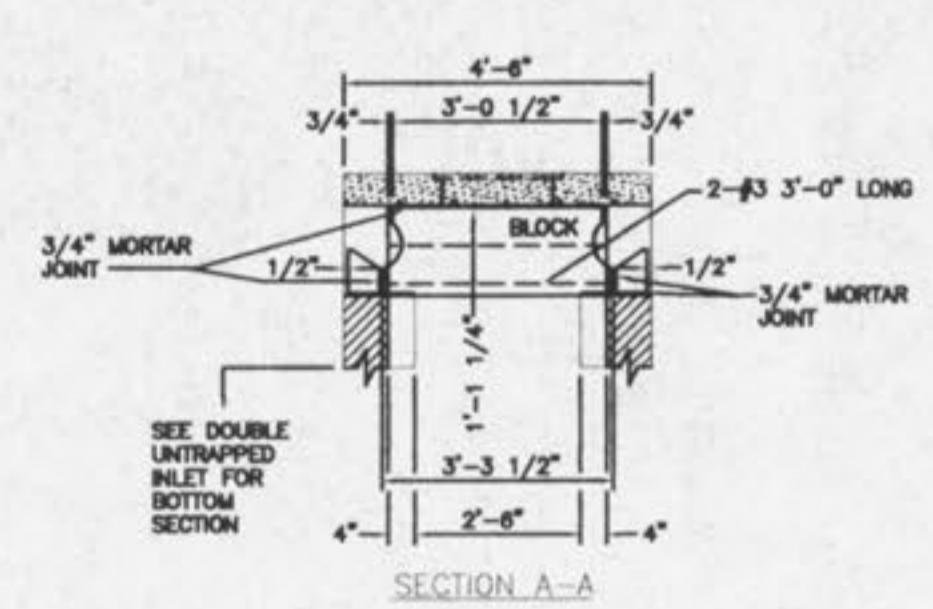
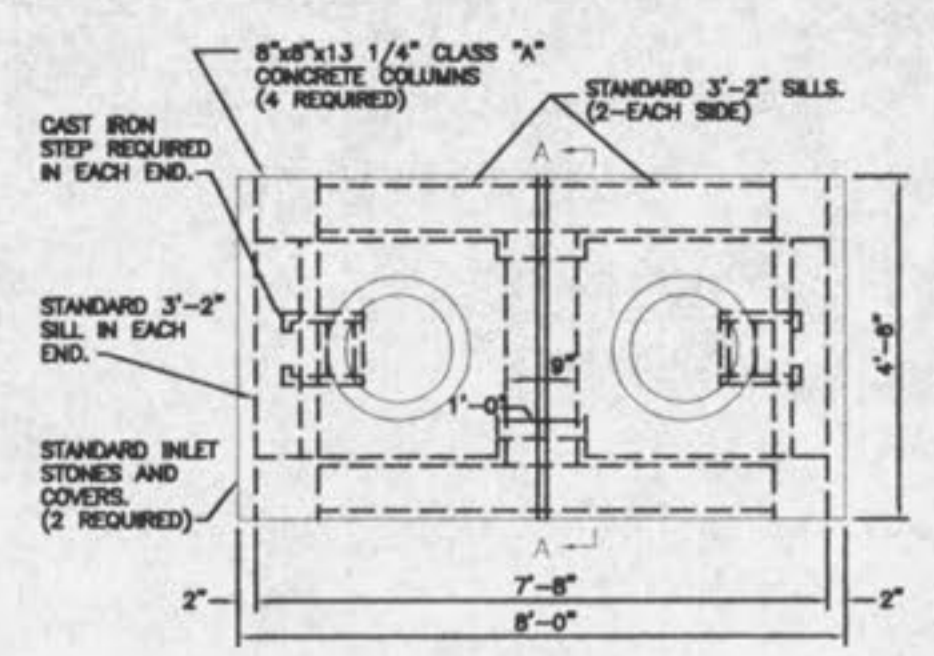


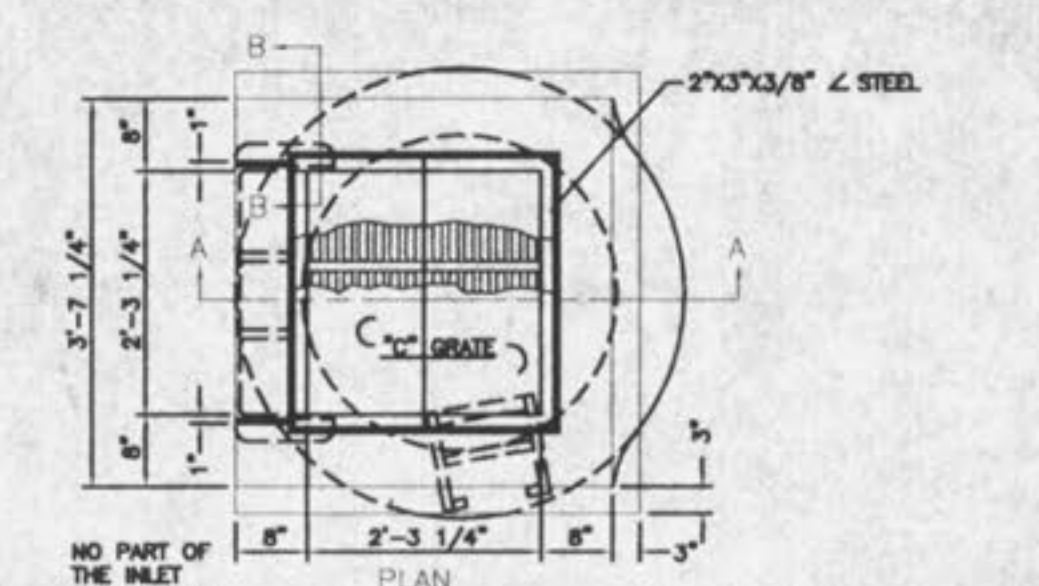
NOTES:  
 A. SET 2 STANDARD INLET STONES IN 3/4" MORTAR BED AND DOWEL WITH 5/8" 1'-0" LONG PINS AND GROUT.  
 B. RAISE TO FINAL GRADE WITH COURSES OF BRICK & SET THE UNIT TO BASE WITH 3/4" MORTAR BED.  
 C. TO BE USED WITH POURED-IN-PLACE CONCRETE BASE.  
 D. 4000 P.S.I. CONCRETE REQUIRED.



NOTES:  
 A. SET 2 STANDARD INLET STONES IN 3/4" MORTAR BED AND DOWEL WITH 5/8" 1'-0" LONG PINS AND GROUT.  
 B. SET THE UNIT TO BASE WITH 3/4" MORTAR BED.  
 C. THIS UNIT IS TO BE USED WITH A BRICK BASE HAVING 8" THICK WALLS AND WHO'S INSIDE DIMENSIONS CONFORM TO THE BASIC DIMENSIONS OF THE UNIT AS INDICATED.  
 D. 4000 P.S.I. CONCRETE REQUIRED.



NOTE: INLETS ON THIS SHEET ARE TO BE USED IN LOCATIONS WHERE STANDARD OPEN THROAT INLETS CANNOT BE USED, IN PAVED TRAFFIC WAY, AND IN LIMITED EASEMENTS.



NOTE: FOR DEPTHS EXCEEDING 6" CUT REQ'D. AMOUNT FROM END VIEW OF CASTING.  
 NOTE: INLETS ON THIS SHEET ARE TO BE USED IN LOCATIONS WHERE STANDARD OPEN THROAT INLETS CANNOT BE USED, IN PAVED TRAFFIC WAY, AND IN LIMITED EASEMENTS.

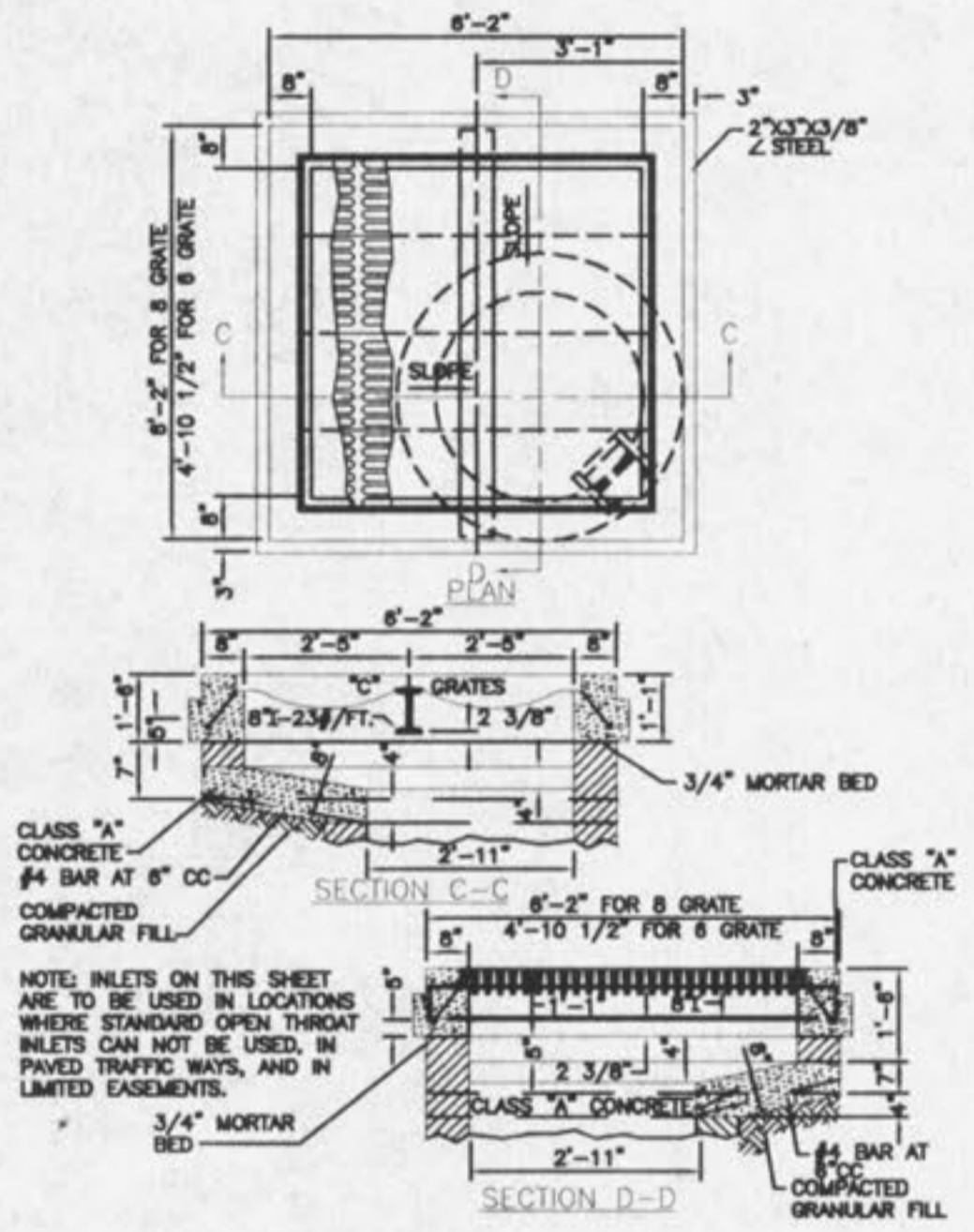
PRE-CAST CONCRETE UNIT FOR DOUBLE CURB INLET (WITH CONCRETE BASE)

PRE-CAST CONCRETE UNIT FOR DOUBLE CURB INLET (WITH BRICK BASE)

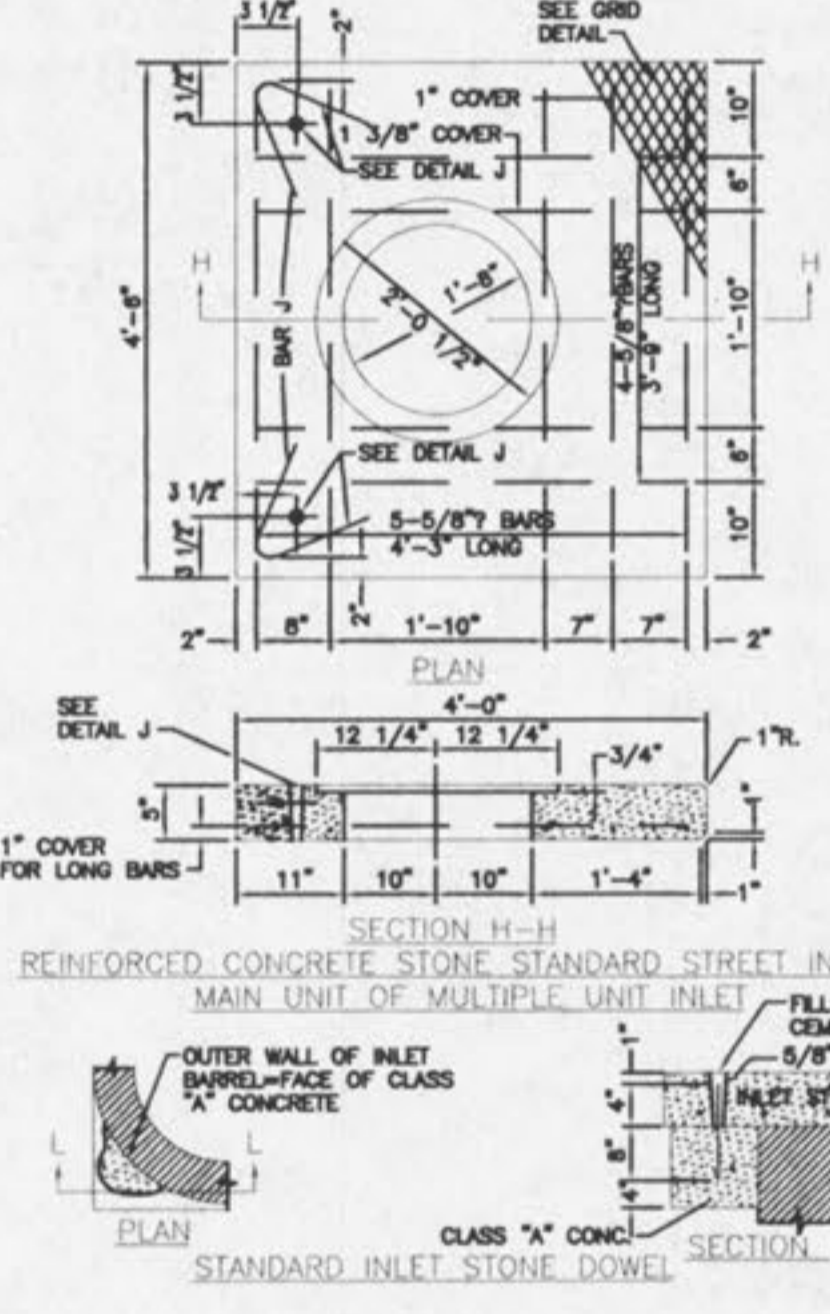
DOUBLE AREA INLET OPEN 4 SIDES

2 GRATE INLET

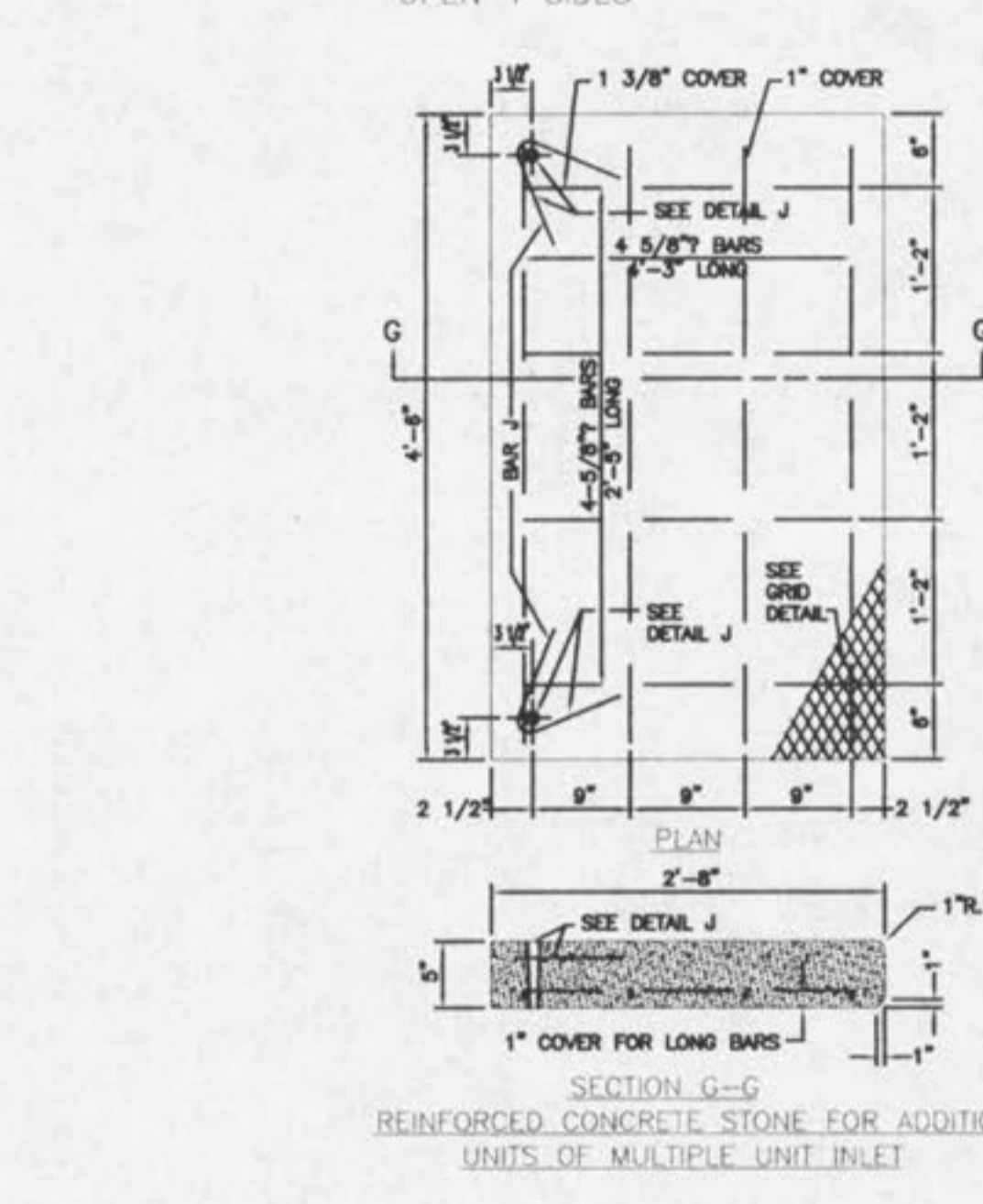
2 GRATE INLET WITH SIDE INTAKE UNIT



6 & 8 GRATE INLET



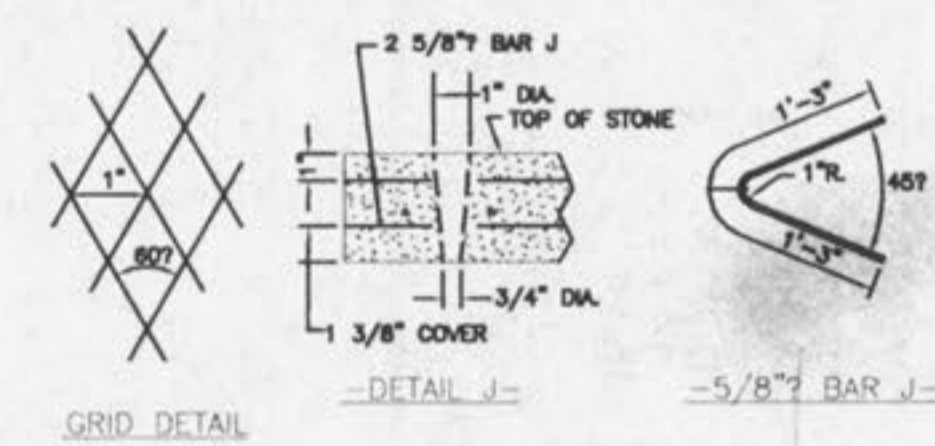
STANDARD - INLET STONES, BLOCKS & DESIGN DETAILS



REINFORCED CONCRETE STONE FOR ADDITIONAL UNITS OF MULTIPLE UNIT INLET

OMIT BRICK MASONRY AS SHOWN. AT TIME OF SETTING INLET STONE FILL SPACE SOLELY WITH CLASS 'A' CONC. SET STONE. INSERT DOWEL IN SOFT CONC. FILL DOWEL HOLE WITH MORTAR.

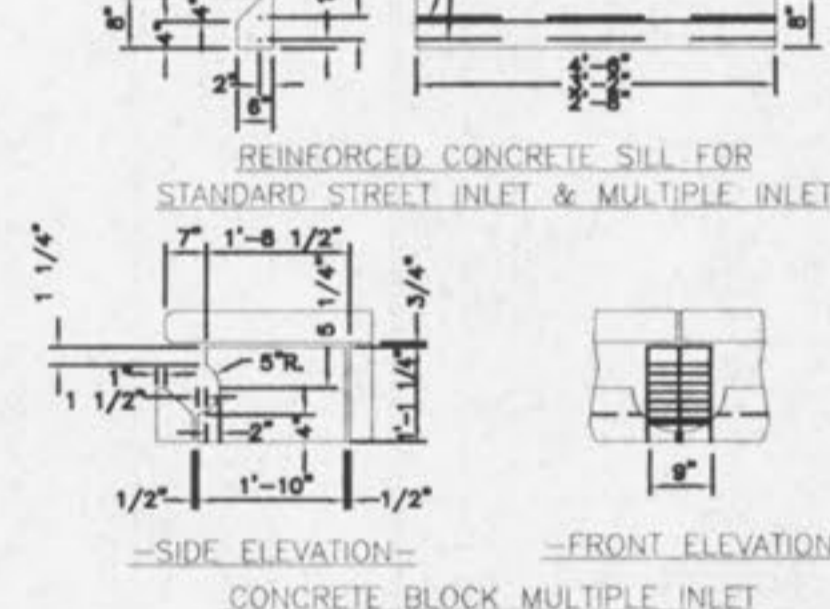
THE DOWELED INLET STONE SHALL BE USED AT ALL LOCATIONS.



GRID DETAIL

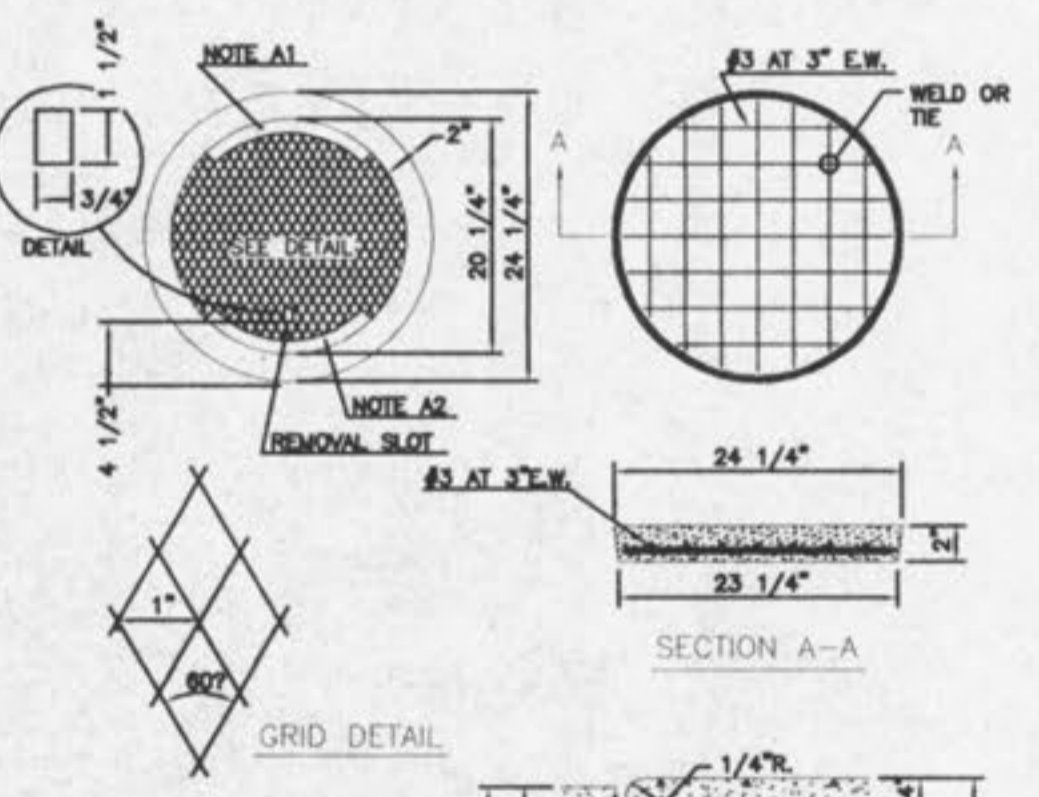
DETAIL J

REINFORCED CONCRETE SILL FOR STANDARD STREET INLET & MULTIPLE INLET

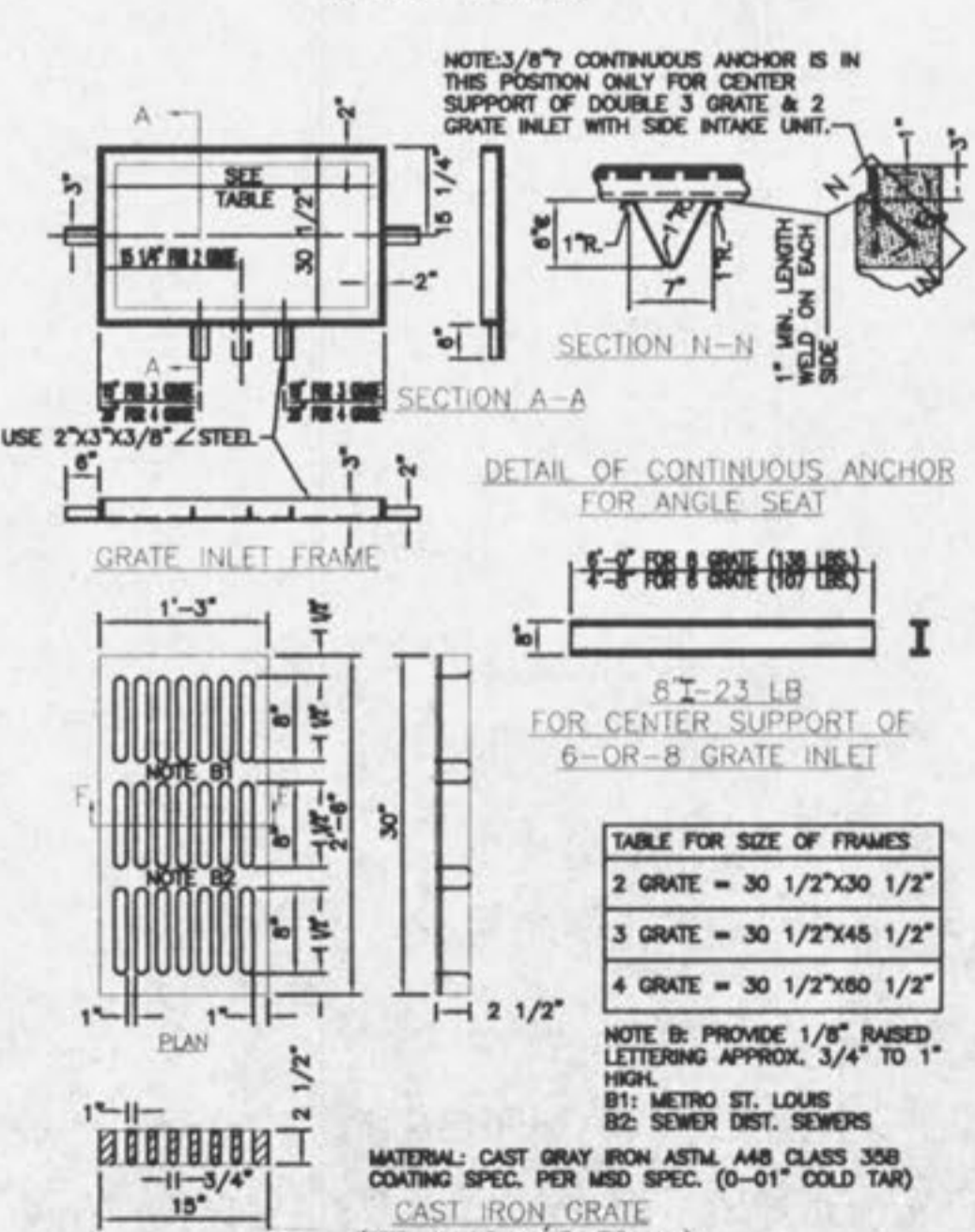


REINFORCED CONCRETE SILL FOR STANDARD STREET INLET & MULTIPLE INLET

CONCRETE BLOCK MULTIPLE INLET

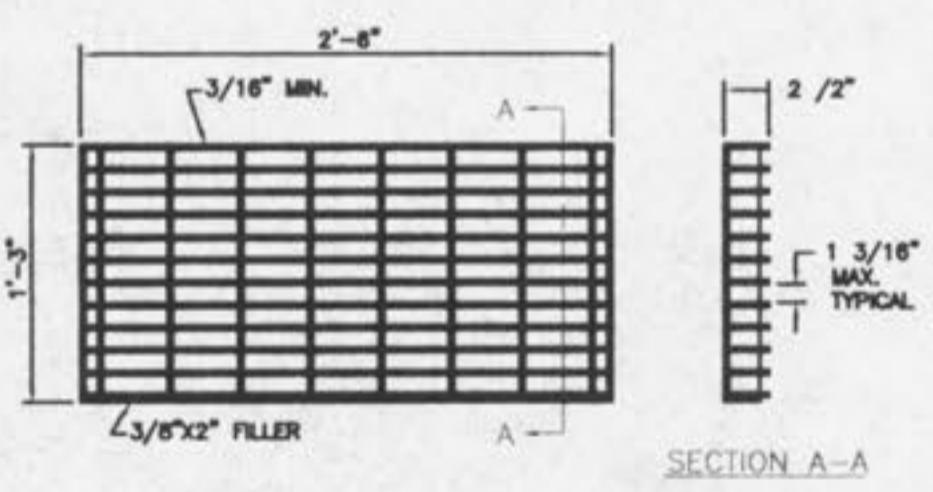


PRE-CAST CONCRETE INLET COVER



DETAILS OF INLET FRAME AND GRATES

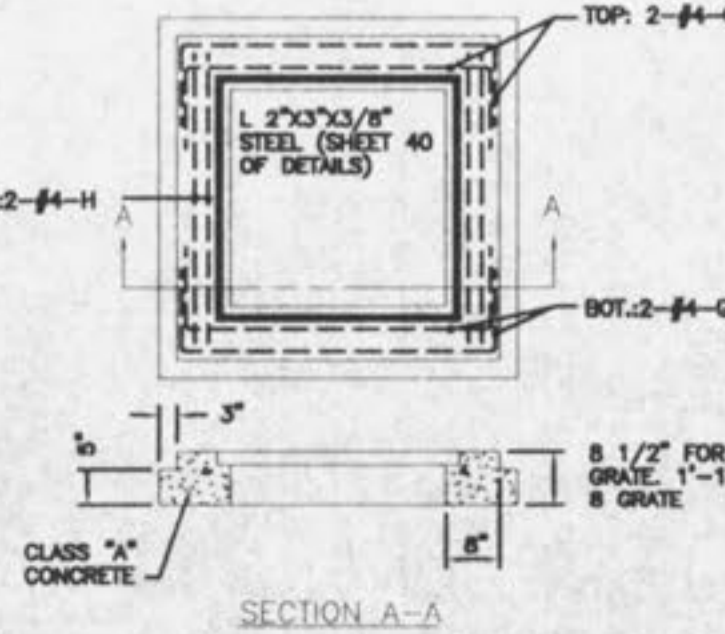
TABLE FOR SIZE OF FRAMES
2 GRATE = 30 1/2" X 30 1/2"
3 GRATE = 30 1/2" X 45 1/2"
4 GRATE = 30 1/2" X 60 1/2"



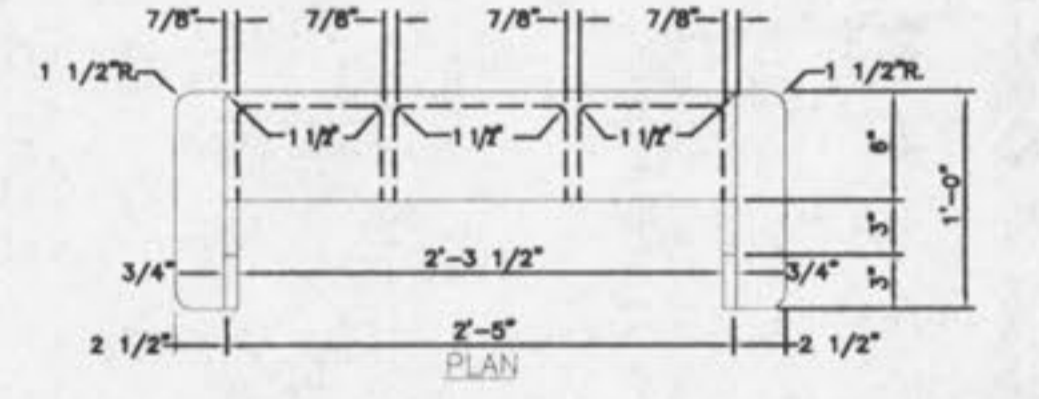
DETAIL OF STEEL GRATE (ALTERNATE TO CAST IRON 'C' GRATE)

FINISH MATERIAL CAPACITY WEIGHT TOLERANCES IDENTIFICATION  
 - ASPHALTIC 10 MIL COATING  
 - MILD CARBON STEEL - ASTM A569  
 - H-20 LOADING  
 - 65 LBS. MIN.  
 - ALL DIMENSIONS #1/8"  
 - THE MANUFACTURER MUST PLACE HIS NAME OR MARK ON EACH UNIT FOR THE PURPOSE OF IDENTIFICATION

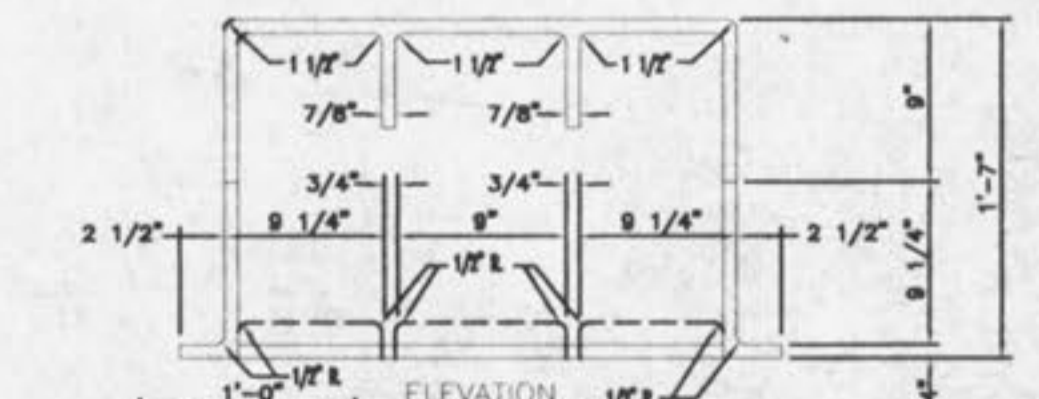
CALL	USE	Ø	STRAIGHT BARS
G-1	2,3 OR 4 GRATE	3'-4"	
G-2	6 & 8 GRATE	5'-10"	
H-2	2 GRATE	3'-6"	
H-3	3 & 6 GRATE	4'-8"	
H-4	4 & 8 GRATE	6'-0"	



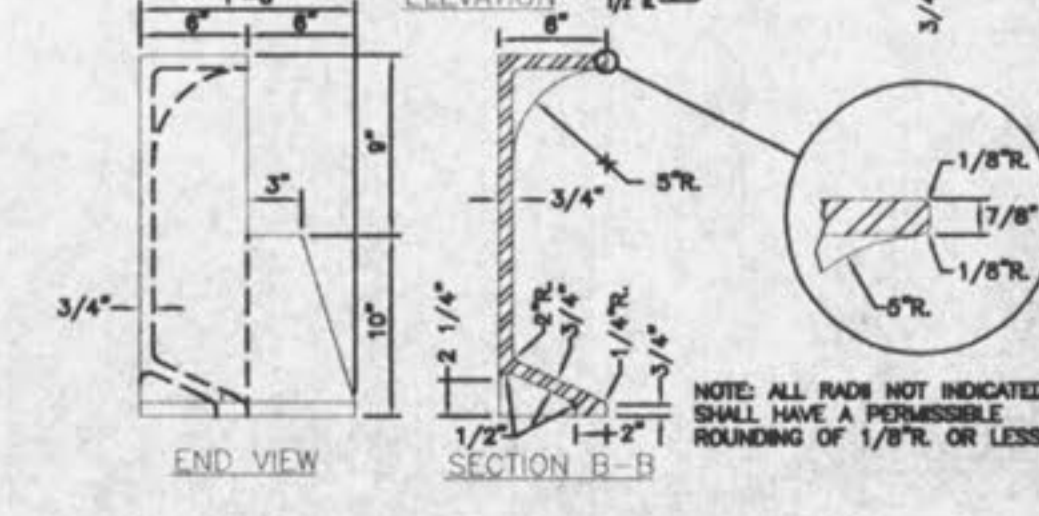
STEEL REQUIREMENTS FOR GRATE INLET SEAT



PLAN



ELEVATION



END VIEW

CAST IRON SIDE INTAKE UNIT FOR GRATED INLETS 249 LBS.

**PICKETT RAY & SILVER**  
 CIVIL ENGINEERS  
 PLANNERS  
 LAND SURVEYORS

333 Mid Rivers Mall Drive  
 St. Peters, MO 63376  
 Phone (636) 397-1211  
 Fax (636) 397-1104

**HAMPTON WOODS**  
 CONSTRUCTION DETAILS

Prepared For:  
 SUMMIT POINTE L.C.

239 FOX HILL ROAD  
 ST. CHARLES, MO 63301  
 636-940-9300

REVISIONS

NO.	DATE	BY	PER CITY OF FALLON
1	08-27-08	REV.	PER CITY OF FALLON
2	11-10-08	REV.	PER CITY OF FALLON

ENGINEERS AUTHENTICATION  
 The responsibility for professional engineering liability on this project is hereby limited to the set of plans authorized by the seal, signature, and date hereunder attached. Responsibility is disclaimed for all other engineering plans involved in this project and specifically excludes revisions after this date unless reauthorized.

PICKETT RAY & SILVER, INC.  
 HAROLD J. BARTON  
 LICENSED PROFESSIONAL ENGINEER  
 No. 117151

DRAWN	DATE
ABK	MAY, 2002

CHECKED	DATE
D.W.D.	MAY, 2002

PROJECT # 95067.SUPO.OOR  
 TASK # 4 FIELD BOOK 806

HAMPTON WOODS CONSTRUCTION DETAILS  
 SHEET 13 OF 19  
 © Copyright 2002 by Pickett, Ray & Silver Inc.