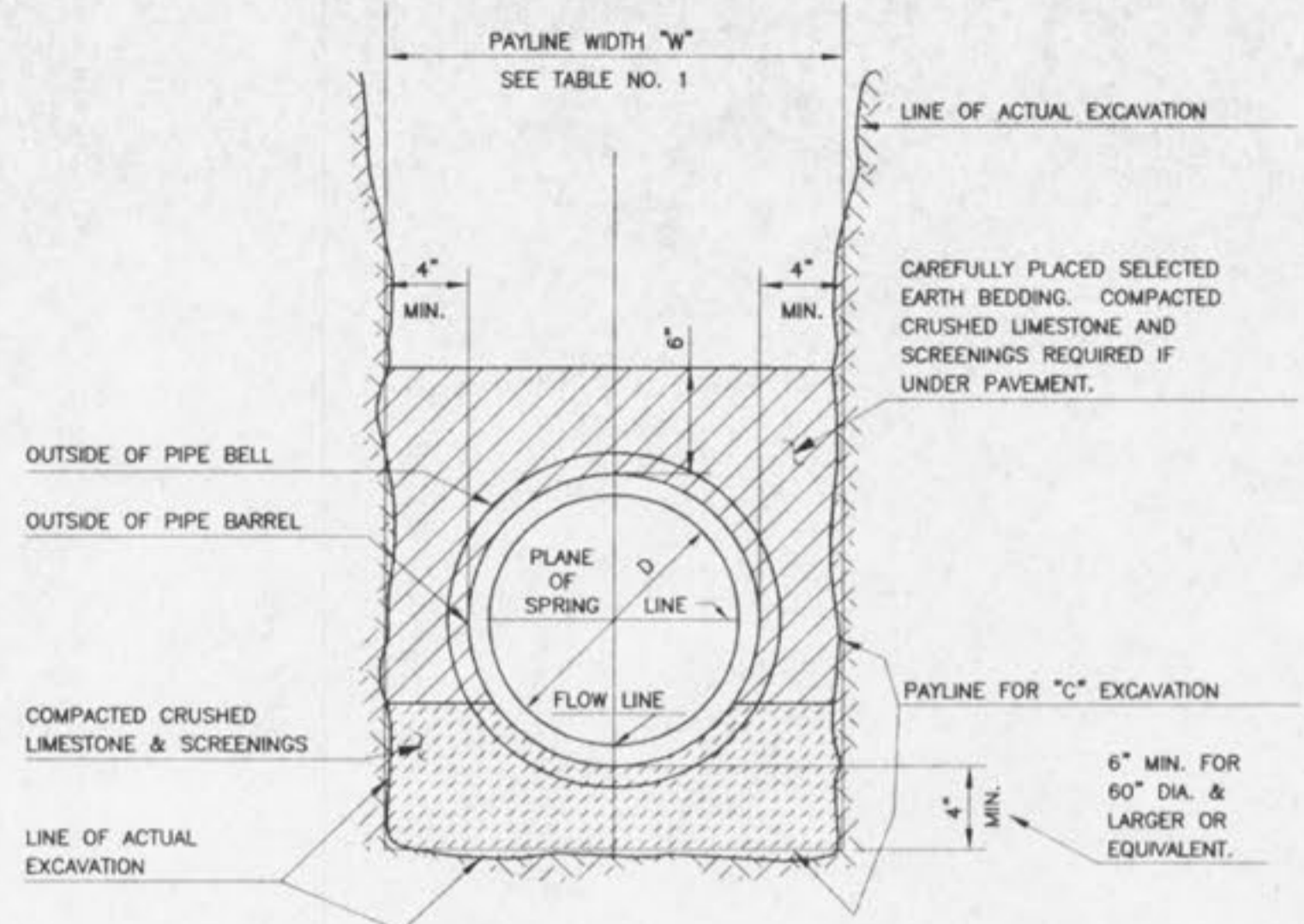
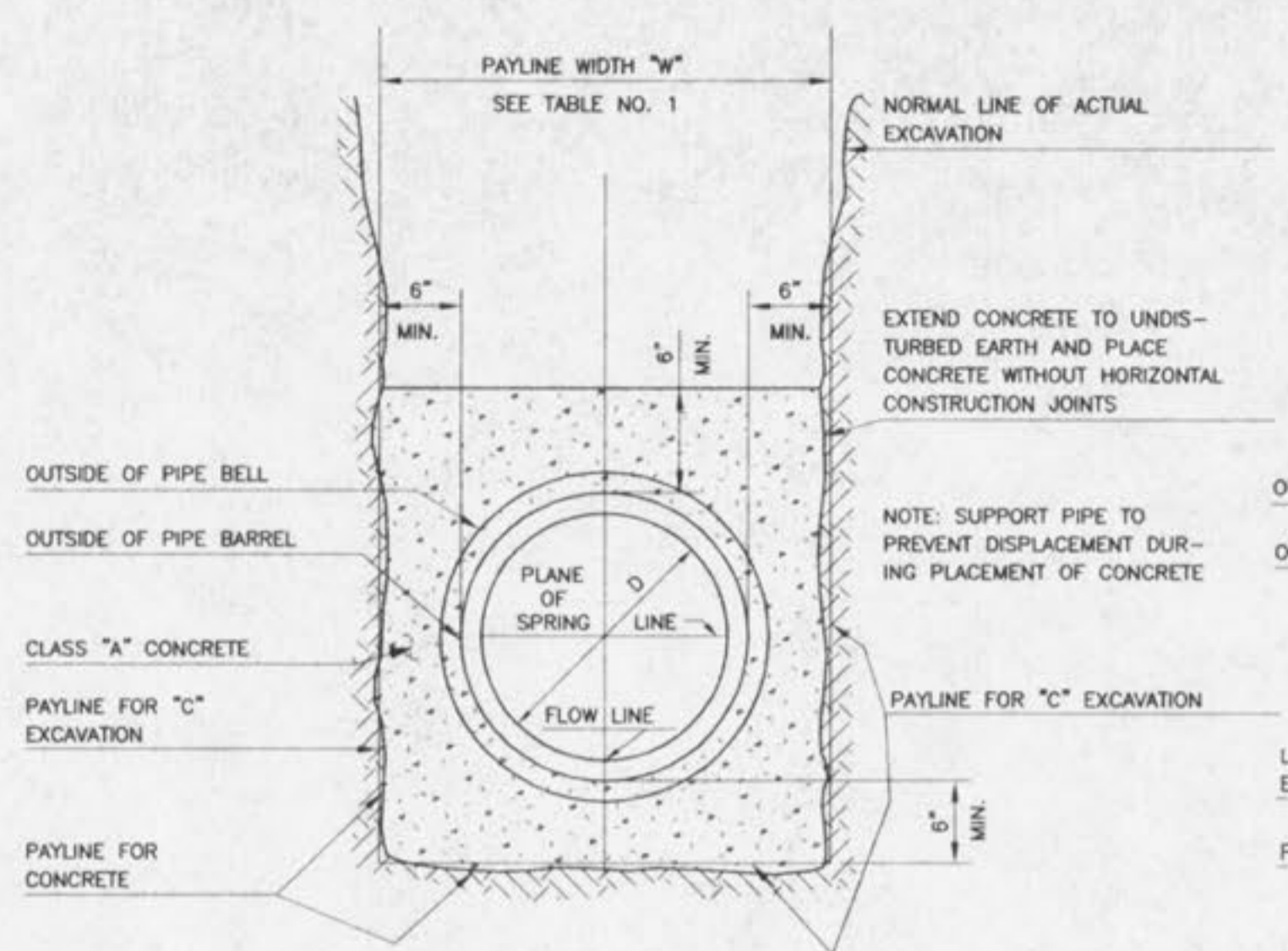


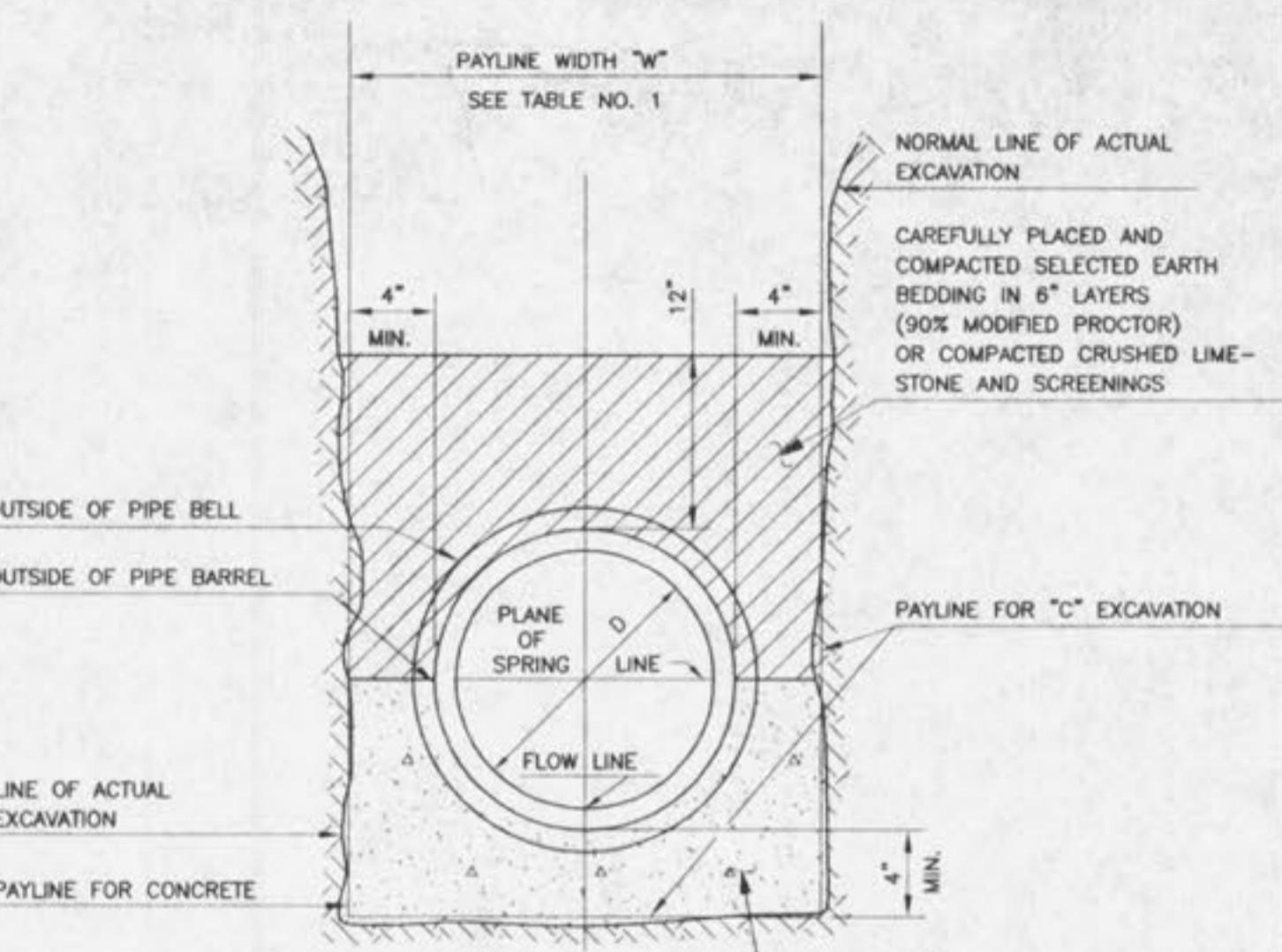
PIPE BEDDING CLASS "C"
(FOR ALL PIPE EXCEPT
REINFORCED CONCRETE PIPE)



PIPE BEDDING CLASS "C"
(MODIFIED FOR REINFORCED
CONCRETE PIPE)



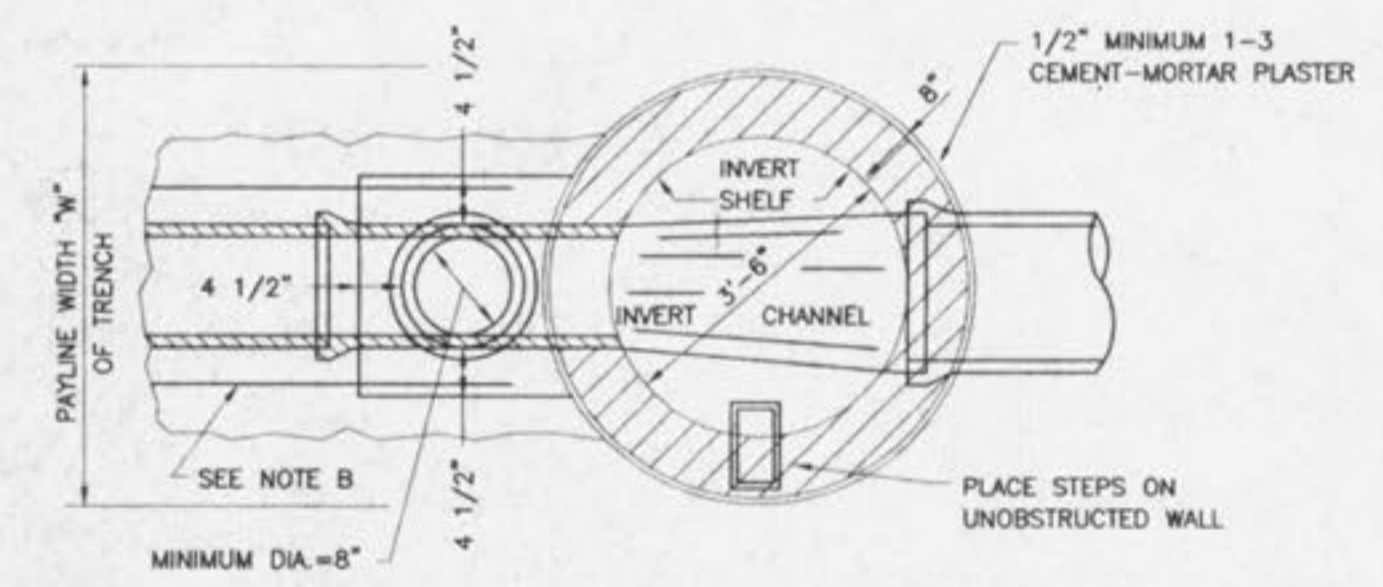
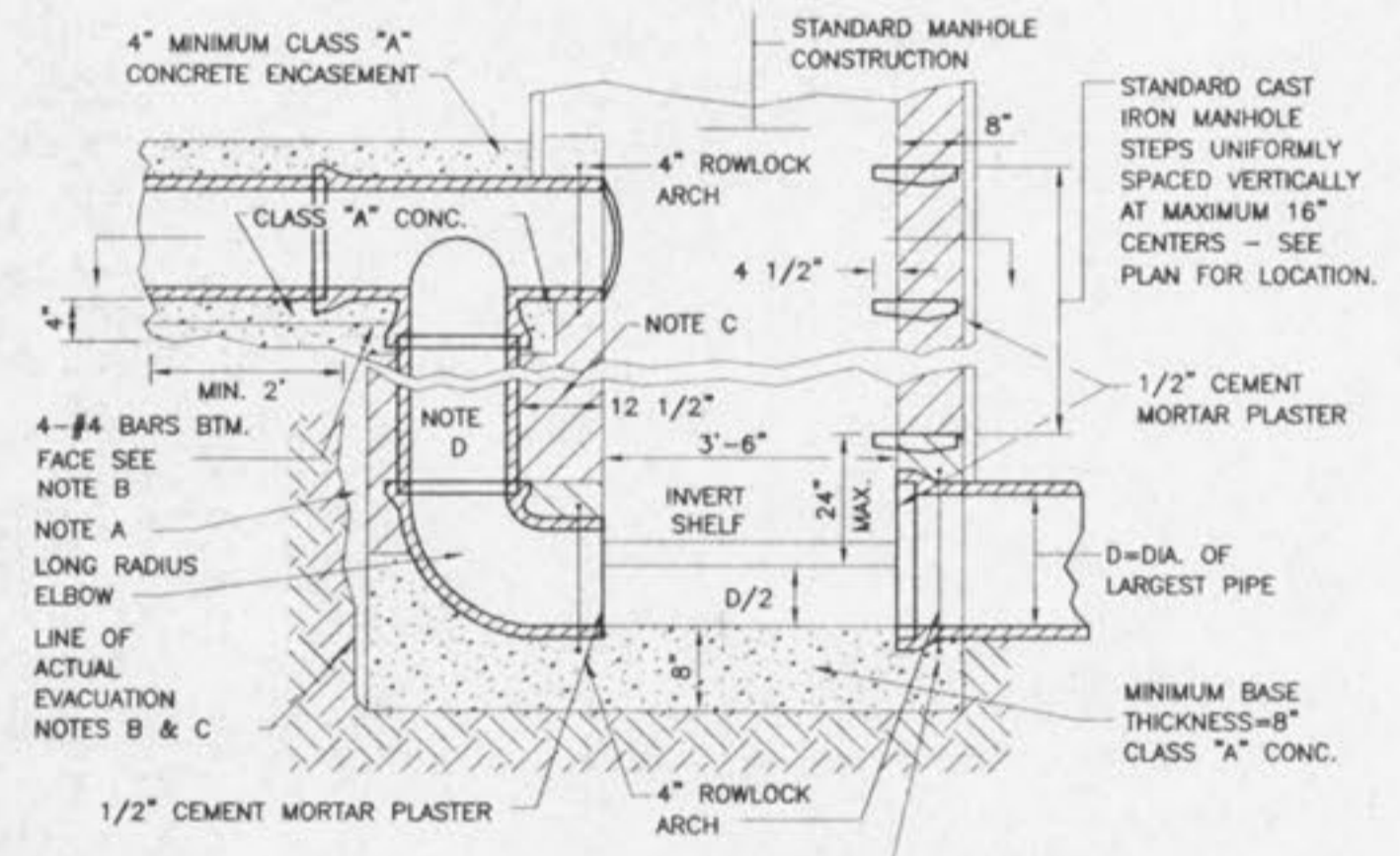
CONCRETE ENCASEMENT



(CLASS "A" BEDDING)
CONCRETE CRADLE

ALSO FOR PIPE SEWERS ON GRADES
25% TO 50% INCLUSIVE.
FOR GRADES EXCEEDING 50% SEE
PROJECT SPECIFICATIONS.

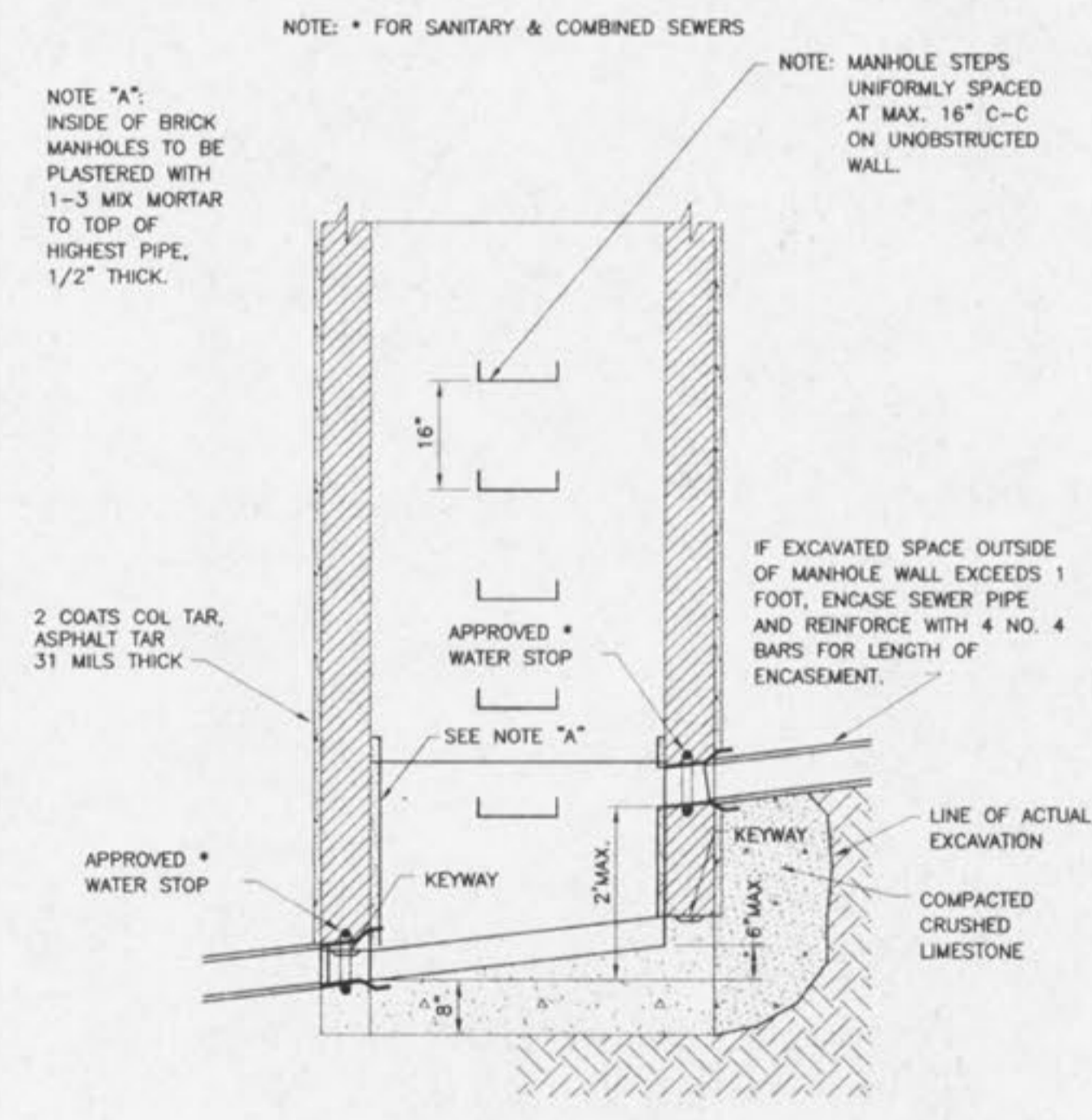
CLASS "A" CONCRETE FOR
PLASTIC PIPE USE CONCRETE
COLLARS TWO FEET LONG AND
SIX INCHES THICK EVERY
TWELVE FEET ADJACENT TO
AND DOWN STREAM OF BELLS.
(IN LIEU OF CONC. CRADLE)



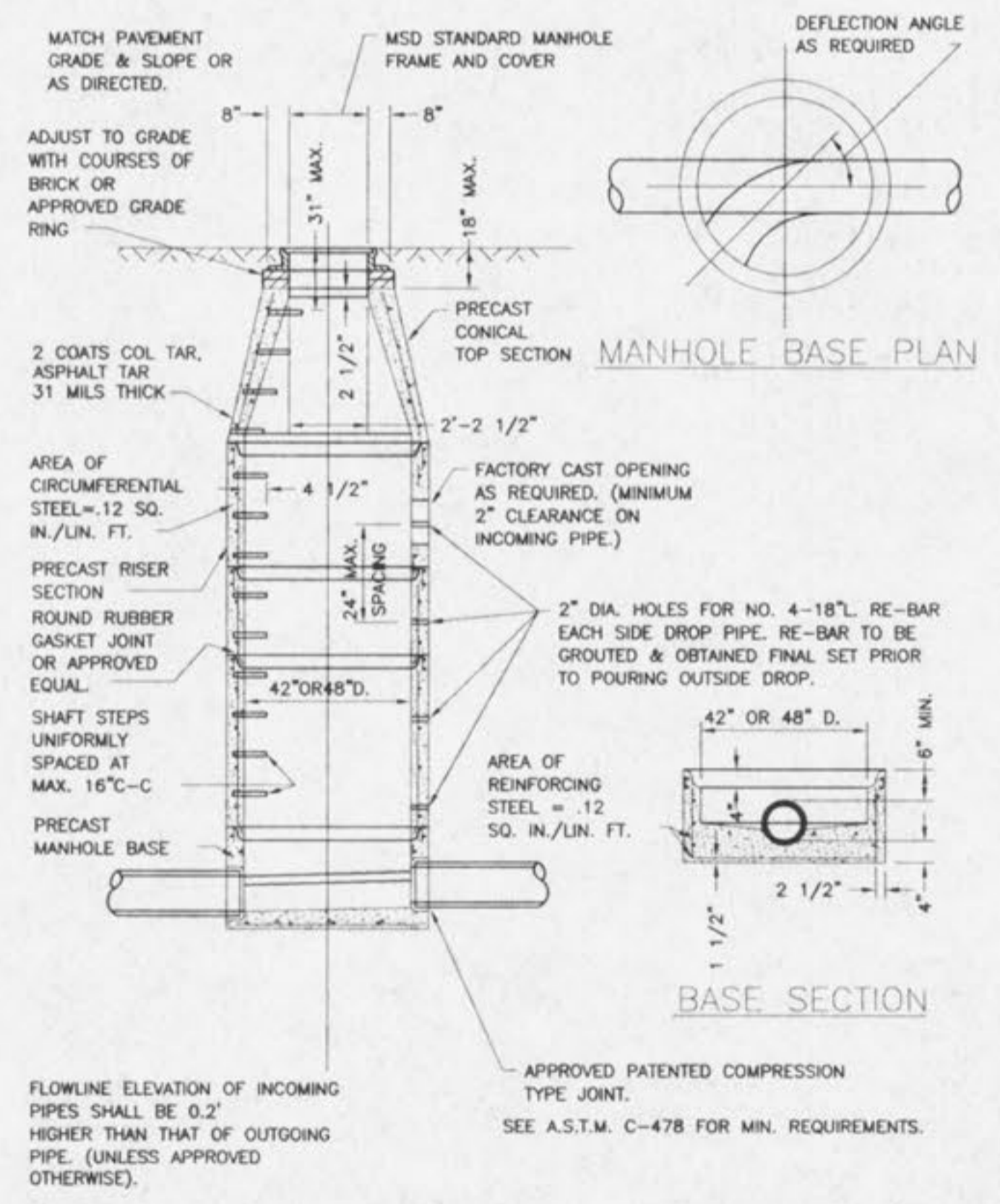
PLAN SECTION

SEE ACCOMPANYING SHEET FOR NOTES.

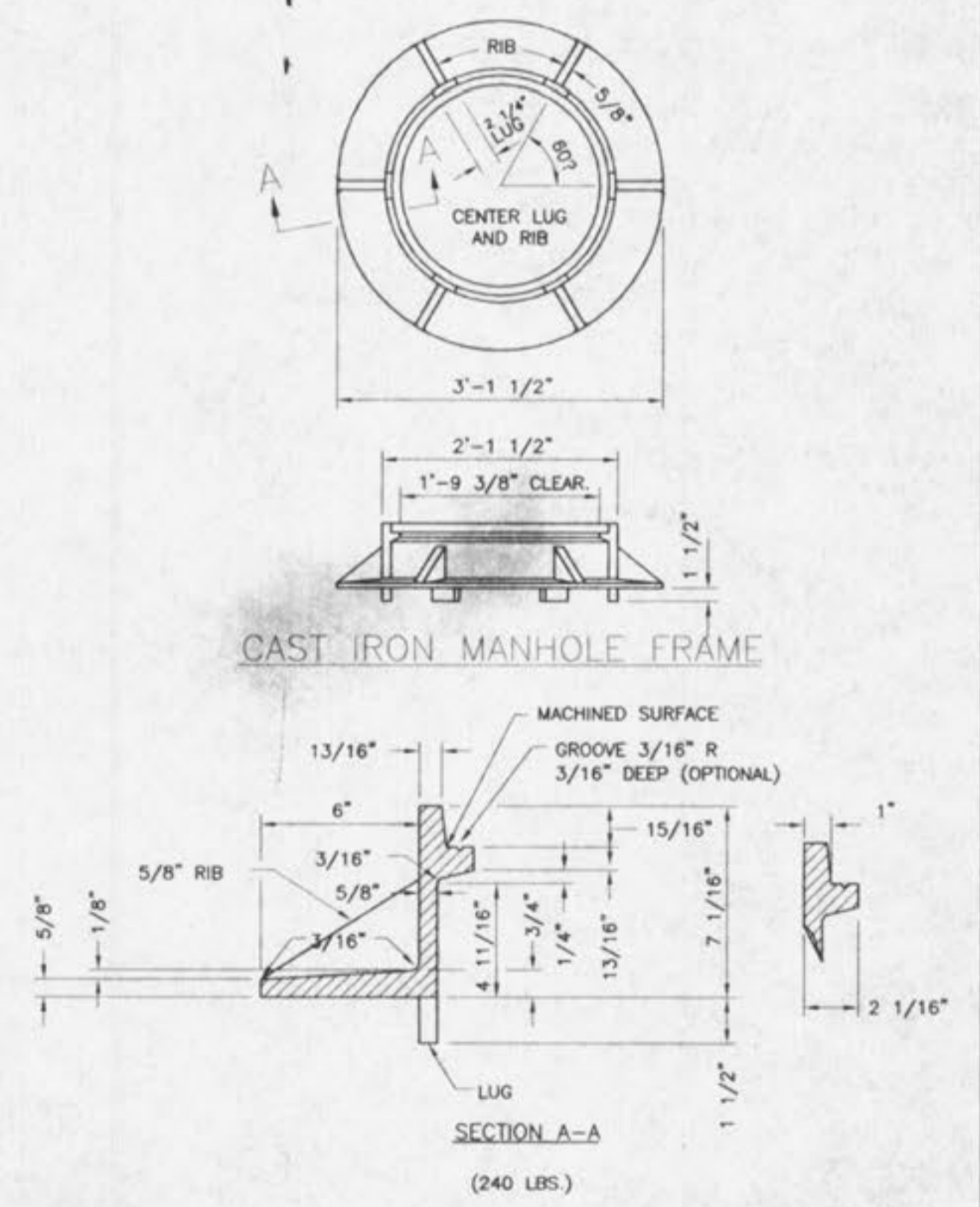
OUTSIDE FOULWATER
DROP MANHOLE



INSIDE DROP
(8" THRU 24" DIA. PIPE)



PRE-CAST CONCRETE MANHOLE
FOR SEWERS
8" THROUGH 12"



CAST IRON
MANHOLE FRAME

PICKETT RAY & SILVER

333 Mid Rivers Mall Drive
St. Peters, MO 63376
Phone (636) 397-1211
Fax (636) 397-1104

CIVIL ENGINEERS
PLANNERS
LAND SURVEYORS

HAMPTON WOODS

SANITARY DETAILS

Prepared For:
SUMMIT POINTE L.C.

239 FOX HILL ROAD
ELLSWORTH, MO 63091
636-940-9300

REVISIONS	NO.	DATE	BY	PER CITY OF FALLON	REV.	PER CITY OF FALLON
	1	06-27-02				
	2	11-15-02				

ENGINEERS AUTHENTICATION

The responsibility for professional engineering liability on this project is hereby limited to the set of plans authenticated by the seal, signature, and date hereunder attached. Responsibility is disclaimed for all other engineering plans involved in this project and specifically excludes revisions after this date unless reauthenticated.

PICKETT, RAY & SILVER, INC.

DATE OF EXPIRATION: 12/31/05
HAROLD J. BARTON
JAMES E. BARTON
E 7751

DRAWN ABK	DATE MAY, 2002
CHECKED D.W.D.	DATE MAY, 2002
PROJECT # 95067.SUP0.00R	FIELD BOOK 806
TASK # 4	