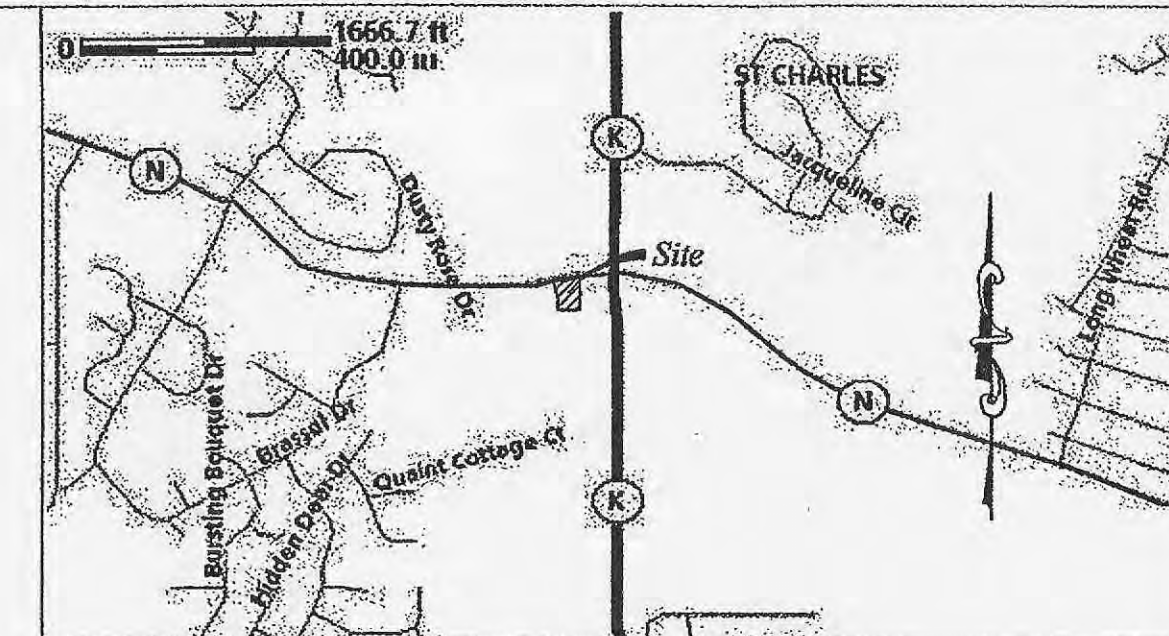
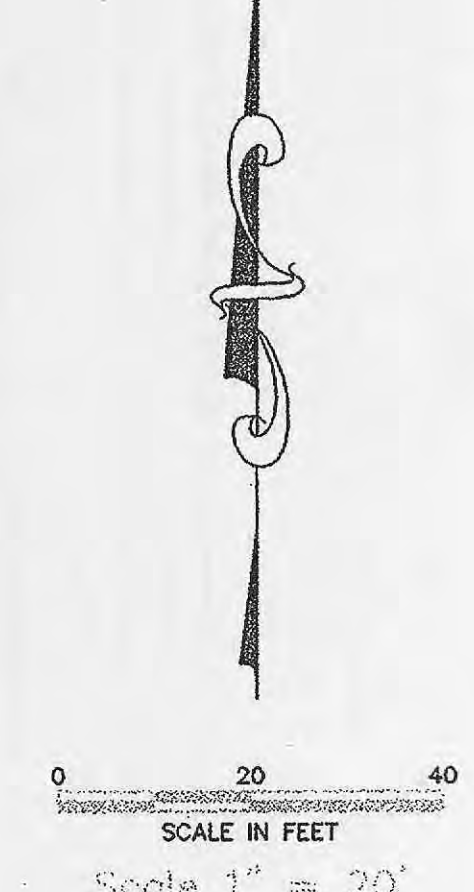
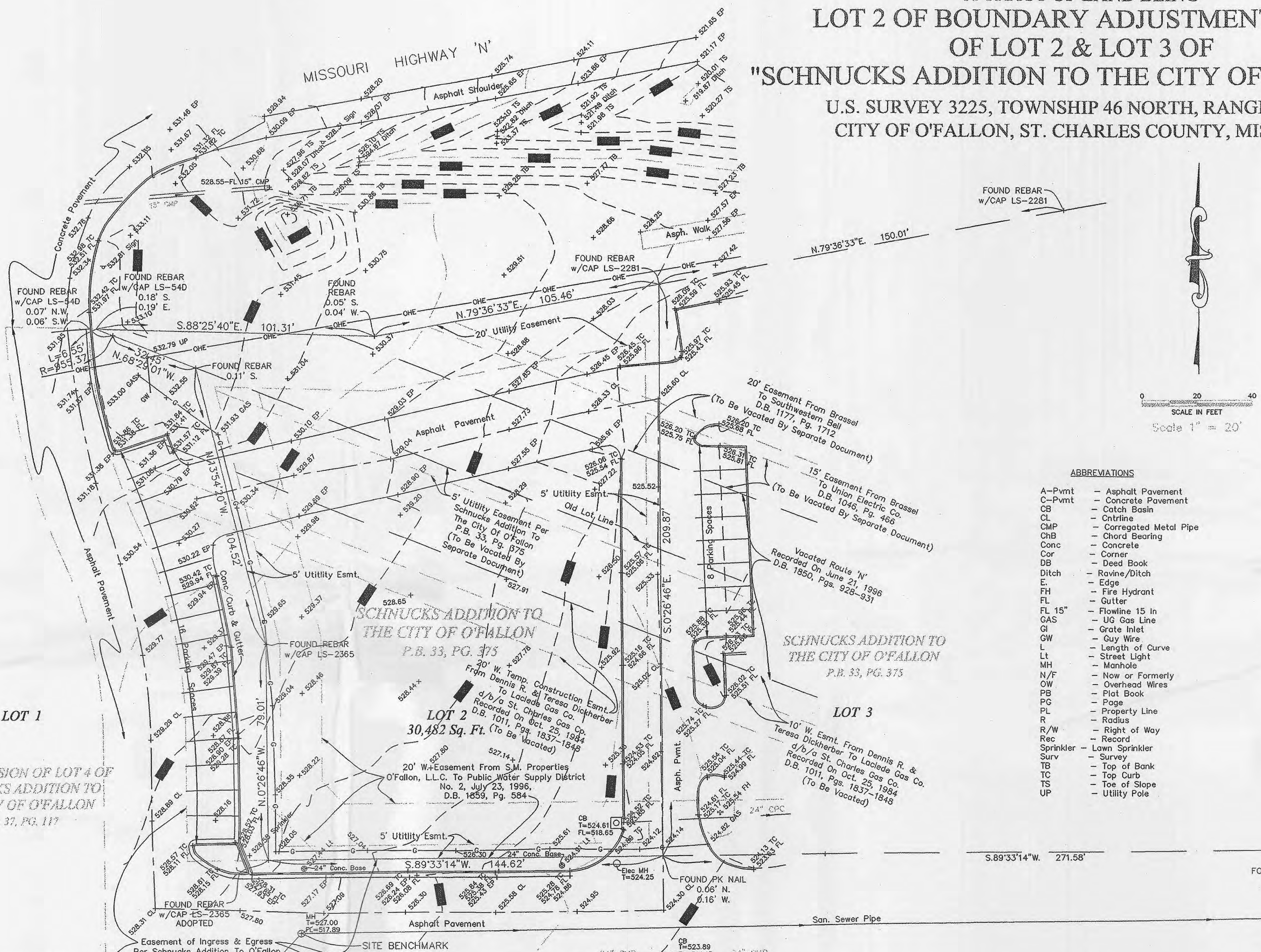


A TRACT OF LAND BEING
**LOT 2 OF BOUNDARY ADJUSTMENT PLAT
 OF LOT 2 & LOT 3 OF
 "SCHNUCKS ADDITION TO THE CITY OF O'FALLON"**
 U.S. SURVEY 3225, TOWNSHIP 46 NORTH, RANGE 3 EAST
 CITY OF O'FALLON, ST. CHARLES COUNTY, MISSOURI



LOCATION MAP



The Clayton Engineering Company
 11920 Westline Industrial Drive, St. Louis, Missouri 63146
 (314) 692-8888

This is to certify to Arcvision and Investors Title Company, that we have, during the month of June, 2001, at the request of Douglas Ashdown, made a Property Boundary, Topographic, and Improvements Survey of a tract of land being Lot 2 of Boundary Adjustment Plat of Lot 2 and Lot 3 of "Schnucks Addition to the City of O'Fallon", a Subdivision according to the Plat thereof recorded in Plat Book 37, Page 395 of the St. Charles County Records, situated in U.S. Survey 3225, Township 46 North, Range 3 East, in the City of O'Fallon, St. Charles County, Missouri, containing 070 acres (30,482 square feet) more or less. This Survey has been made in accordance with the "Missouri Minimum Standards for Property Boundary Surveys", as established by the Missouri Board for Architects, Professional Engineers and Land Surveyors, meets the accuracy requirements of an Urban Property Survey, as defined therein, and the results are as shown on this plat. Bearings are based on the aforementioned plat.

Scott Reynolds, Deputy
 The Clayton Engineering Company
 By: Steven A. Borgmann
 Mo. LS 2583

ABBREVIATIONS

- A-Pvmt - Asphalt Pavement
- C-Pvmt - Concrete Pavement
- CB - Catch Basin
- CL - Cntrline
- CMP - Corrugated Metal Pipe
- CHB - Chord Bearing
- Conc - Concrete
- Cor - Corner
- DB - Deed Book
- Ditch - Ravine/Ditch
- E - Edge
- FH - Fire Hydrant
- FL - Gutter
- FL 15" - Flowline 15 in
- GAS - UG Gas Line
- GI - Gutter Inlet
- GW - Guy Wire
- L - Length of Curve
- LT - Street Light
- MH - Manhole
- N/F - Now or Formerly
- OW - Overhead Wires
- PB - Plat Book
- PG - Property Line
- PL - Radius
- R - Right of Way
- R/W - Record
- Rec - Record
- Sprinkler - Lawn Sprinkler
- Surv - Survey
- TB - Top of Bank
- TC - Top Curb
- TS - Toe of Slope
- UP - Utility Pole

GENERAL NOTES:

1. Source of Title: Investors Title Company Commitment for Title Insurance, Number A97-200-1-922, dated June 12, 2002. All calls to Deed and Plat Books are for those books in the St. Charles County Records. Platable easements are as shown, others are as follows:
 - A) As evidenced by the descriptions contained therein, this parcel may be subject to the following: Outlot Easements and Restriction Agreement recorded in Deed Book 2428, Page 943.
 - B) As evidenced by the descriptions contained therein, the following easement does not affect the subject property: Easements to Missouri Highway and Transportation Commission, recorded in Deed Book 2264, Page 158.
2. The existence of utilities has been limited to those visible from the ground surface. Underground utilities and facilities has been plotted from available plats, furnished by others, and are not certified as to being complete or correct.
3. Site Benchmark: Top of sanitary manhole #8 (per improvement plans by Buescher Frankenberg Assoc. Inc. dated March 1996) in asphalt drive at the southwest corner of site. Elevation = 527.00

The original of this drawing is on file at the office of The Clayton Engineering Company. This signed and sealed original is the official document and shall take precedence over any digital version. Any modifications to this drawing shall release said Clayton Engineering Company, the Engineer and/or the Surveyor whose seal appears hereon from any liability resulting from said unauthorized modifications.

7/22/02 BJW REVISED CERT., GEN. NOTES, MON. NOTES AND PARKING EAST OF SITE	
REVISIONS	
BOUNDARY IMPROVEMENTS & TOPOGRAPHIC SURVEY	
HARDEE'S	
Highway K and Highway N	
O'Fallon, Missouri 63366	
Prepared for:	ARCVISION, INC.
	10810 Indian Head Industrial Blvd.
	Saint Louis, Missouri, 63132
	Tel. (314) 428-3500 Fax. (314) 428-5061
Designed	BJW
Drawn	JDB
Checked	JDB
Date	07/01/02
Project Number	01210-1
Sheet Number	1 of 1

Call Before you Dig
 TOLL FREE
 1-800-344-7483
 MISSOURI ONE-CALL SYSTEM INC.

Underground facilities, structures & utilities have been plotted from available surveys, records & information, and therefore, do not necessarily reflect the actual existence, nonexistence, size, type, number of, or location of these facilities, structures, & utilities.
 The Contractor shall be responsible for verifying the actual location of all underground facilities, structures, & utilities, either shown or not shown on these plans. The underground facilities, structures, & utilities shall be located in the field prior to any grading, excavation or construction of improvements. These provisions shall in no way absolve any party from complying with the Underground Facility Safety and Damage Prevention Act, Chapter 319, RSMo.